

# Repair Tiles

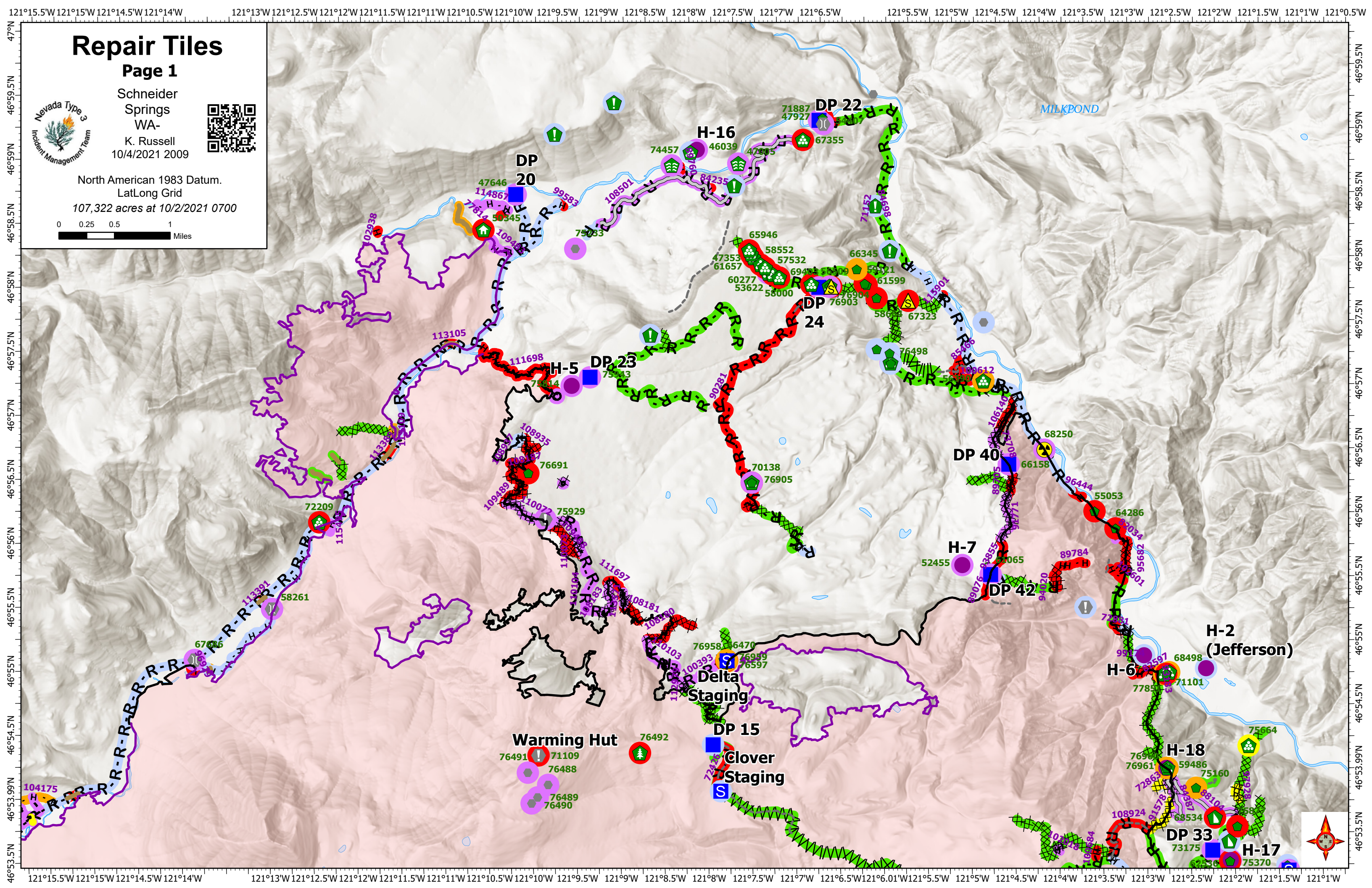
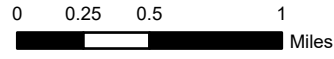
Page 1



Schneider Springs  
WA-  
K. Russell  
10/4/2021 2009



North American 1983 Datum.  
LatLong Grid  
107,322 acres at 10/2/2021 0700



# Repair Tiles

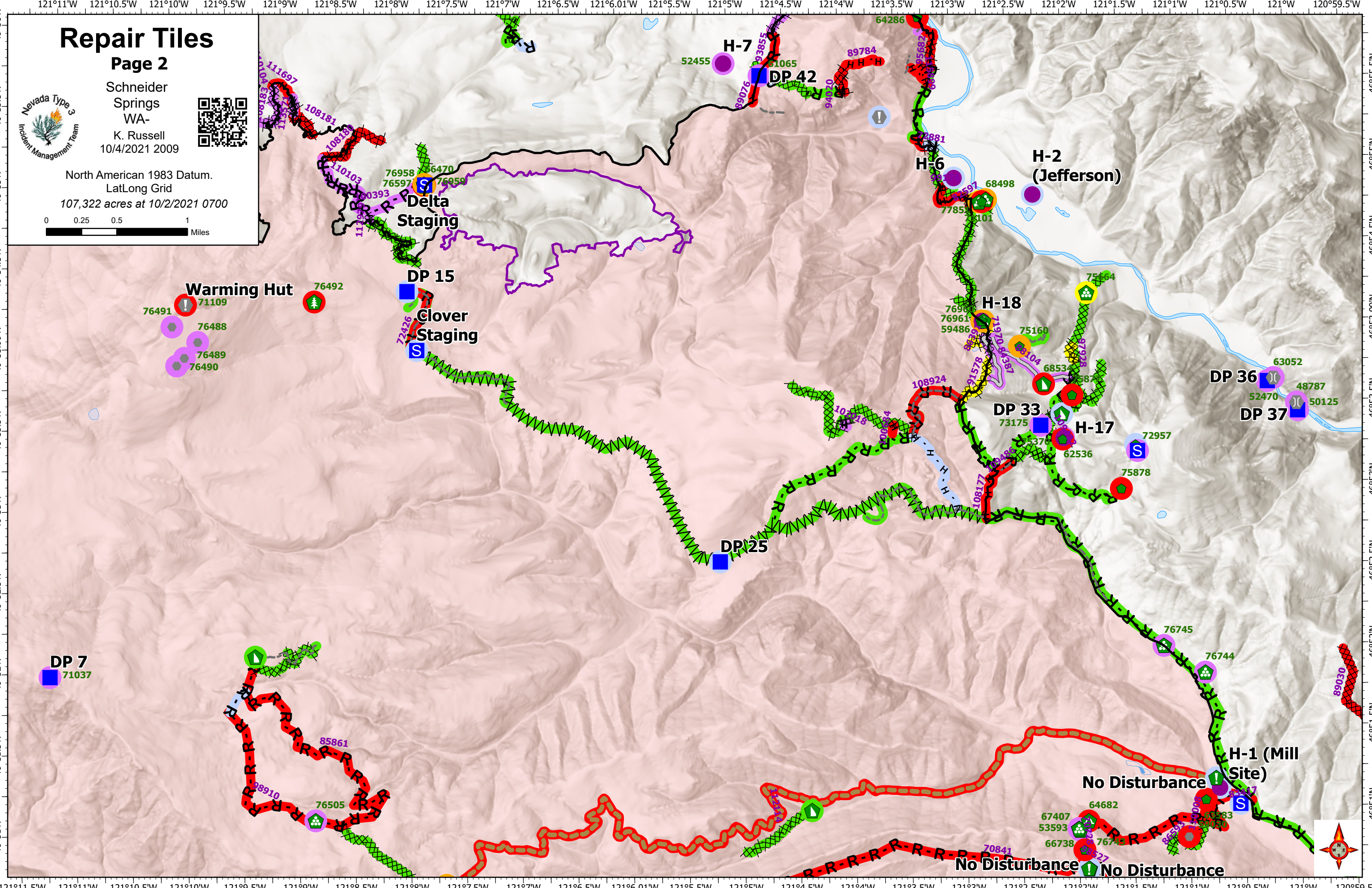
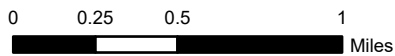
Page 2



Schneider Springs  
WA-  
K. Russell  
10/4/2021 2009



North American 1983 Datum.  
LatLong Grid  
107,322 acres at 10/2/2021 0700



**Warming Hut**

**Delta Staging**

**Clover Staging**

**H-2 (Jefferson)**

**H-18**

**H-17**

**DP 36**

**DP 37**

**DP 25**

**DP 33**

**DP 7**

**H-1 (Mill Site)**

**No Disturbance**

**No Disturbance**



# Repair Tiles

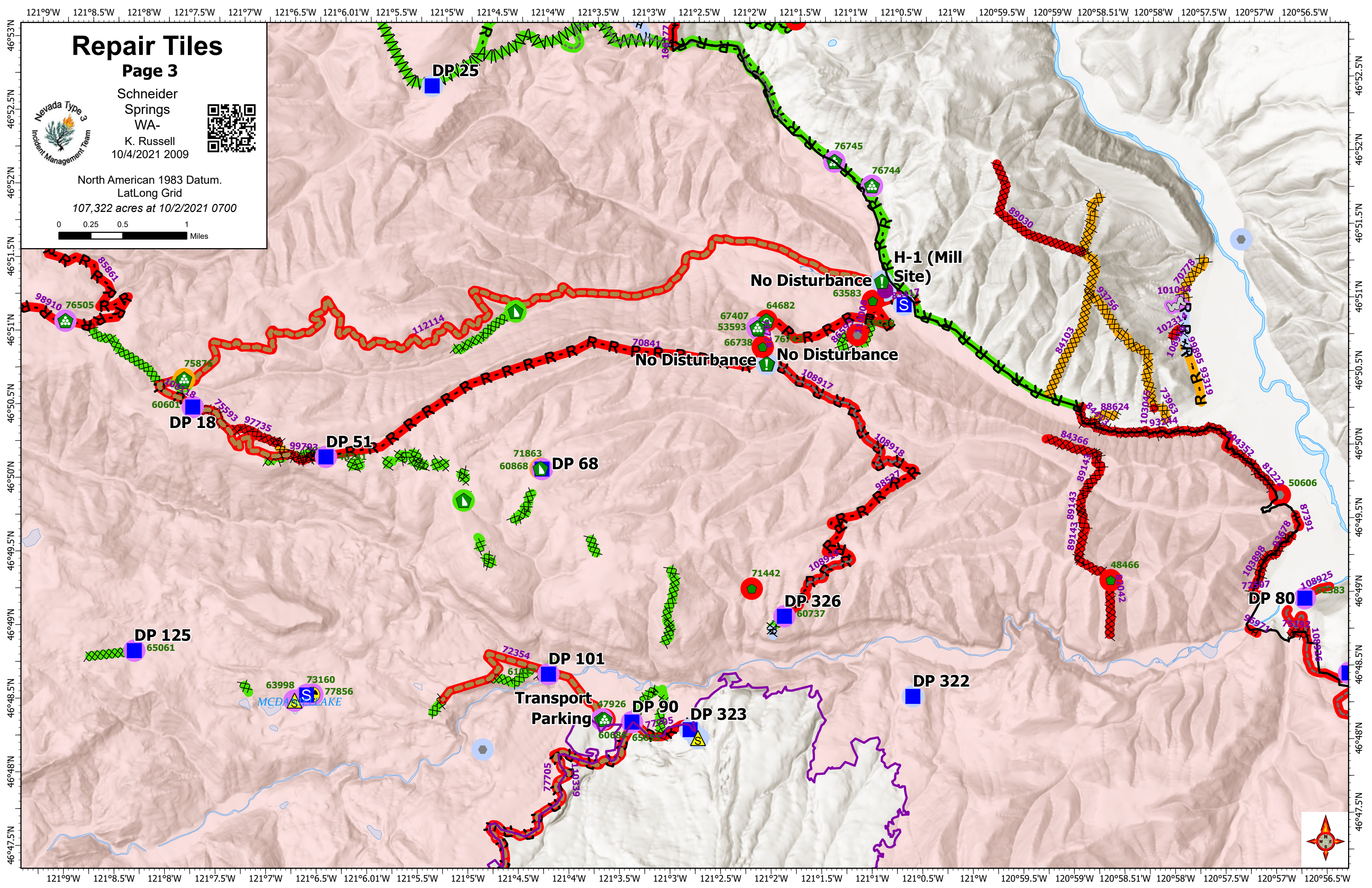
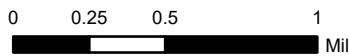
Page 3



Schneider Springs WA-  
K. Russell  
10/4/2021 2009



North American 1983 Datum.  
LatLong Grid  
107,322 acres at 10/2/2021 0700



DP 25

76745  
76744

H-1 (Mill Site)

No Disturbance

No Disturbance

DP 18

DP 51

DP 68

DP 326

DP 80

DP 125

DP 101

DP 90

DP 323

DP 322

Transport Parking

MCDONALD LAKE



# Repair Tiles

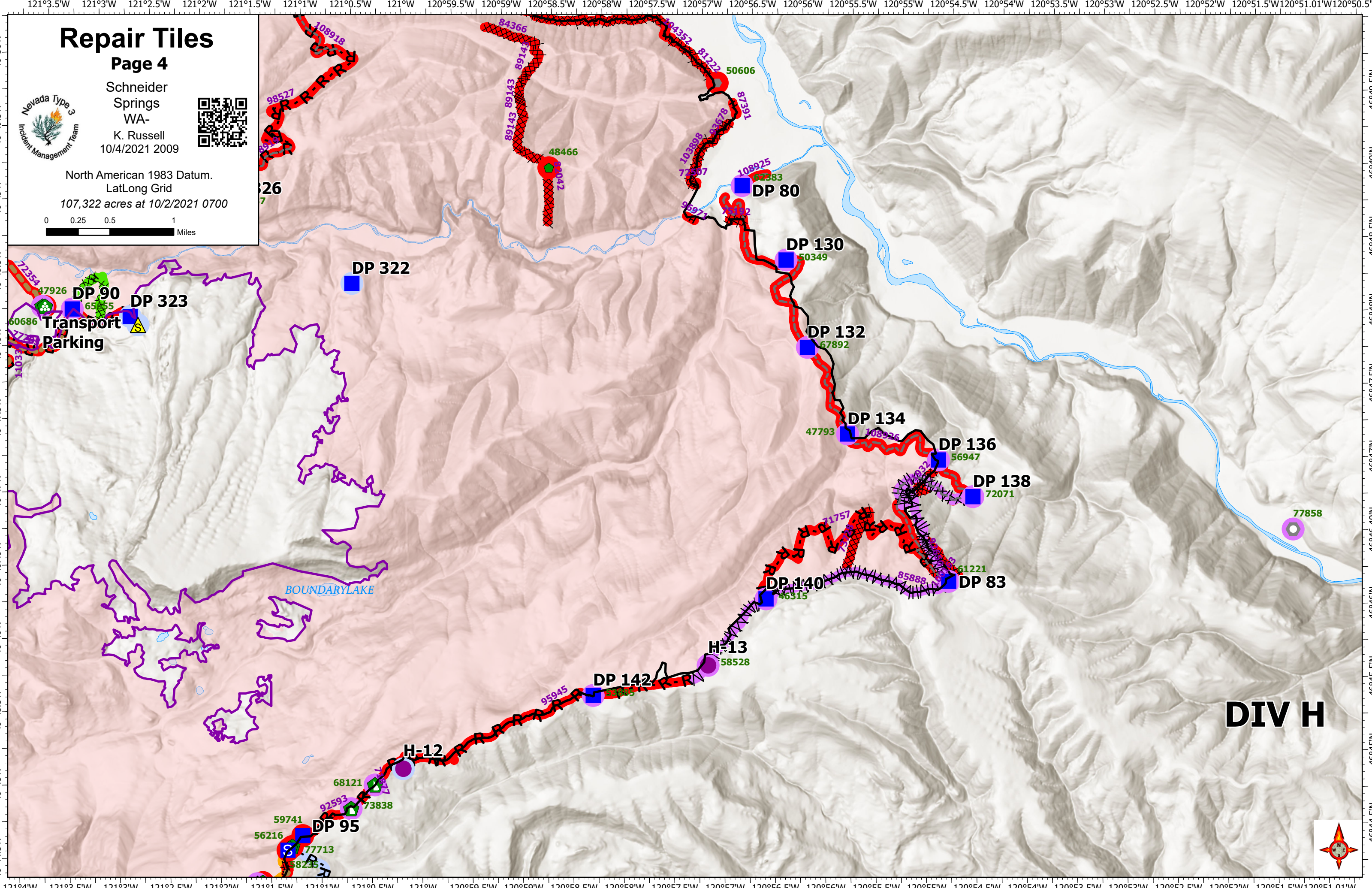
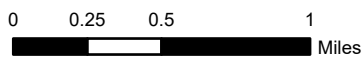
Page 4

Schneider Springs  
WA-

K. Russell  
10/4/2021 2009



North American 1983 Datum.  
LatLong Grid  
107,322 acres at 10/2/2021 0700



# DIV H



# Repair Tiles

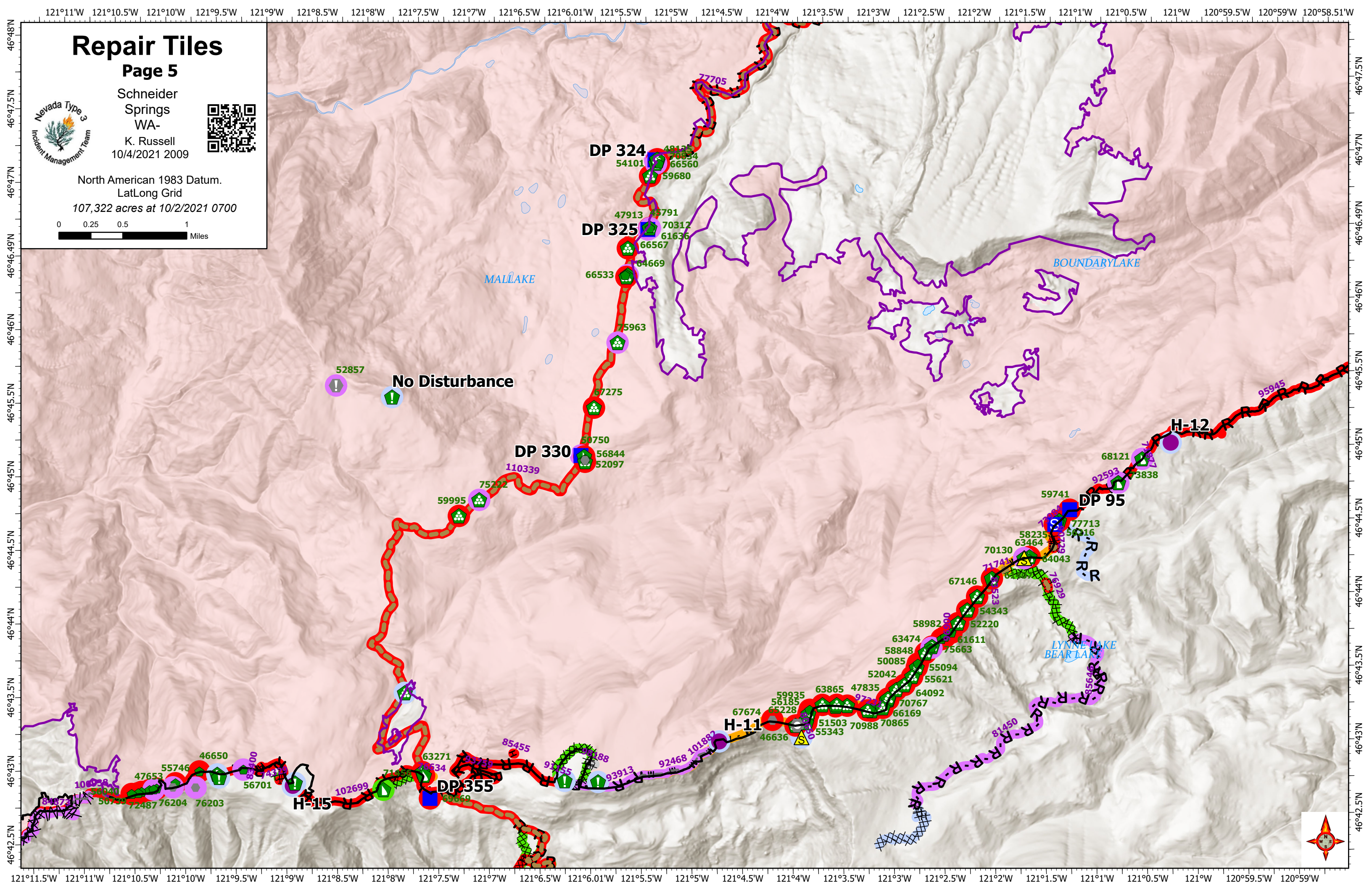
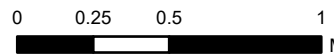
Page 5



Schneider Springs  
WA-  
K. Russell  
10/4/2021 2009



North American 1983 Datum.  
LatLong Grid  
107,322 acres at 10/2/2021 0700



No Disturbance

DP 324

DP 325

DP 330

DP 355

H-11

H-12

H-15

DP 95

MALLAKE

BOUNDARYLAKE

LYNNE LAKE  
BEAR LAKE



# Repair Tiles

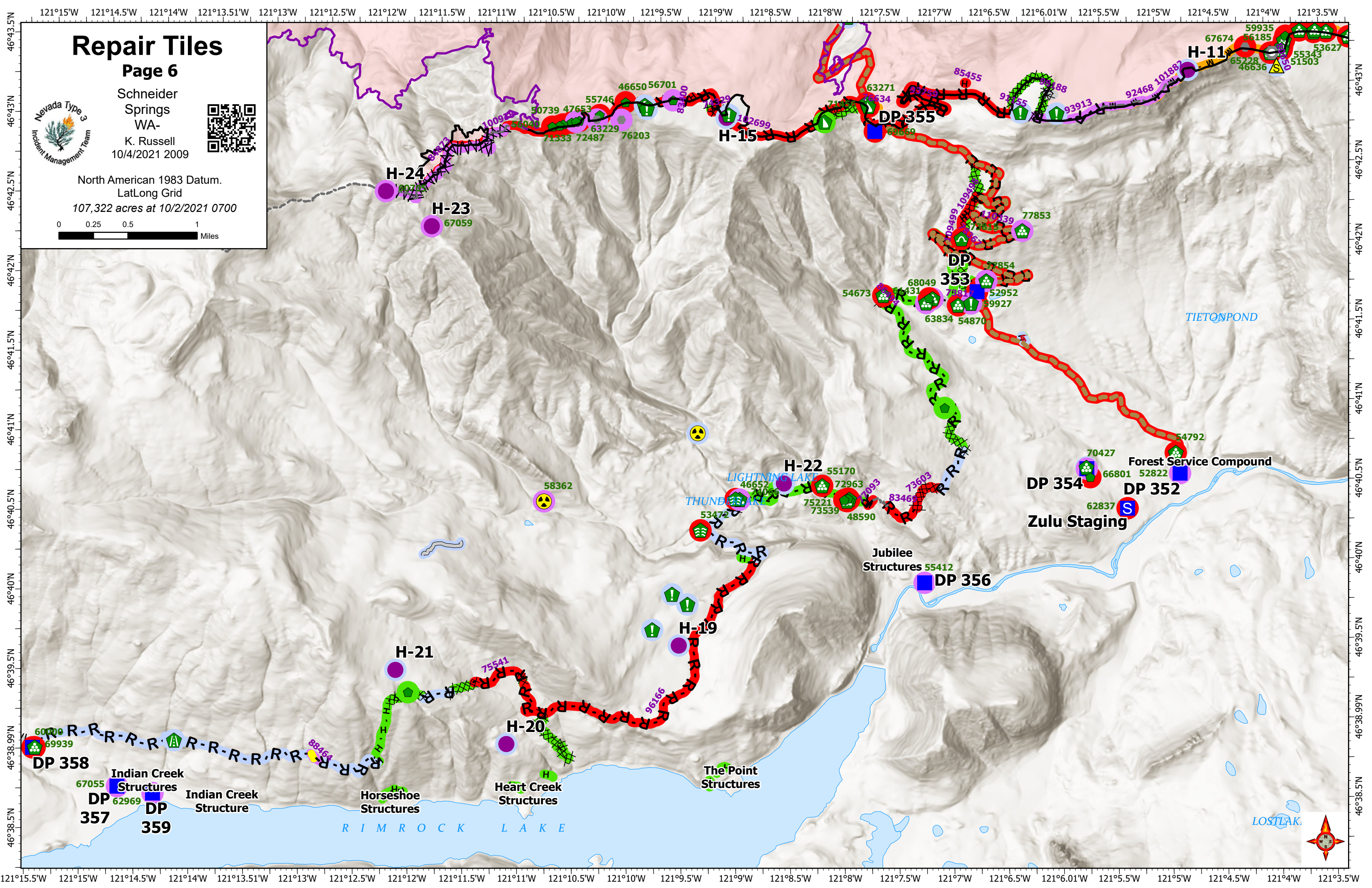
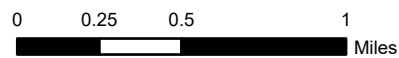
Page 6



Schneider Springs  
WA-  
K. Russell  
10/4/2021 2009



North American 1983 Datum.  
LatLong Grid  
107,322 acres at 10/2/2021 0700



# Repair Tiles

Page 7



Schneider Springs  
WA-  
K. Russell  
10/4/2021 2009



North American 1983 Datum.  
LatLong Grid  
107,322 acres at 10/2/2021 0700

