

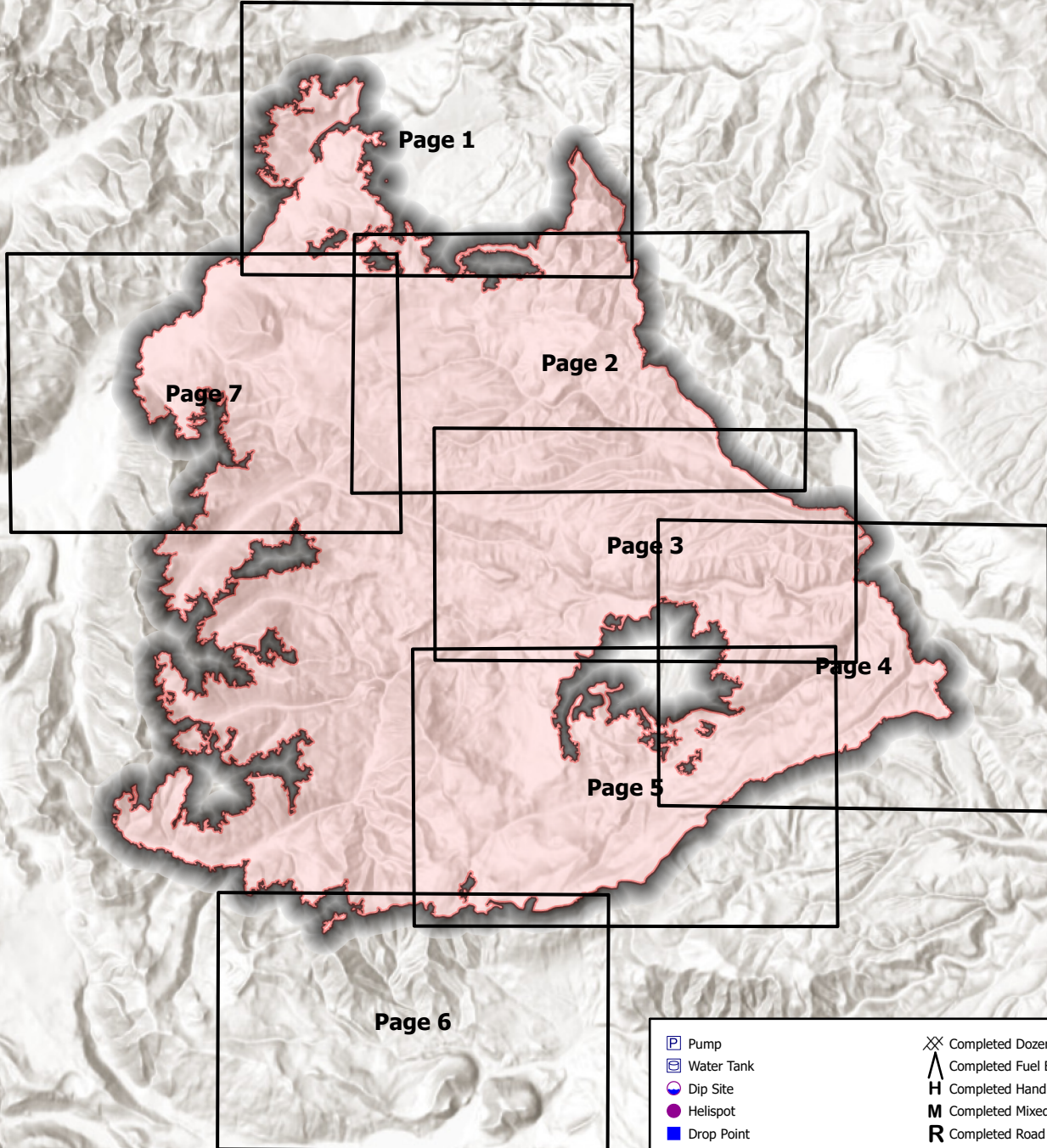
121°21.5'W 121°19'W 121°16.5'W 121°14'W 121°11.5'W 121°9'W 121°7'W 121°5'W 121°3'W 121°1'W 120°59'W 120°56.5'W 120°54'W 120°51.5'W 120°49'W

46°34'N 46°33.5'N 46°33'N 46°32.5'N 46°32'N 46°31.5'N 46°31'N 46°30.5'N 46°30'N 46°29.5'N 46°29'N 46°28.5'N 46°28'N 46°27.5'N 46°27'N 46°26.5'N 46°26'N 46°25.5'N 46°25'N 46°24.5'N 46°24'N 46°23.5'N 46°23'N 46°22.5'N 46°22'N 46°21.5'N 46°21'N 46°20.5'N 46°20'N 46°19.5'N 46°19'N 46°18.5'N 46°18'N 46°17.5'N 46°17'N 46°16.5'N 46°16'N 46°15.5'N 46°15'N 46°14.5'N 46°14'N 46°13.5'N 46°13'N 46°12.5'N 46°12'N 46°11.5'N 46°11'N 46°10.5'N 46°10'N 46°9.5'N 46°9'N 46°8.5'N 46°8'N 46°7.5'N 46°7'N 46°6.5'N 46°6'N 46°5.5'N 46°5'N 46°4.5'N 46°4'N 46°3.5'N 46°3'N 46°2.5'N 46°2'N 46°1.5'N 46°1'N 46°0.5'N 46°0'N

121°22.5'W 121°20'W 121°17.5'W 121°15'W 121°12.5'W 121°10'W 121°8'W 121°5.5'W 121°3'W 121°1'W 120°59'W 120°56.5'W 120°54'W 120°51.5'W 120°49'W



INDEX MAP



- | | |
|---------------------------------|-----------------------------------|
| Pump | Completed Dozer Line |
| Water Tank | Completed Fuel Break |
| Dip Site | Completed Hand Line |
| Helispot | Completed Mixed Construction Line |
| Drop Point | Completed Road as Line |
| Closure | Other |
| Staging Area | Repair Line |
| Other | Road Repair |
| Fire Station | Water Drop |
| Water Development or Draft Site | Fire Edge |
| Repair Point | Contained Line |
| Landing or Log Deck | Wildfire Daily Fire Perimeter |
| Dozer Push | Completed - Inspected |
| Internet Access | Ready for Inspection |
| Repeater | Repair Needed |
| Water Source | Unknown |
| Completed Burnout | |



121°22.5'W 121°20'W 121°17.5'W 121°15'W 121°12.5'W 121°10'W 121°8'W 121°5.5'W 121°3'W 121°1'W 120°59'W 120°56.5'W 120°54'W 120°51.5'W 120°49'W