

Repair Tiles

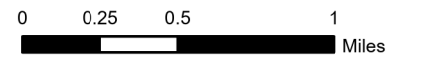
Page 1

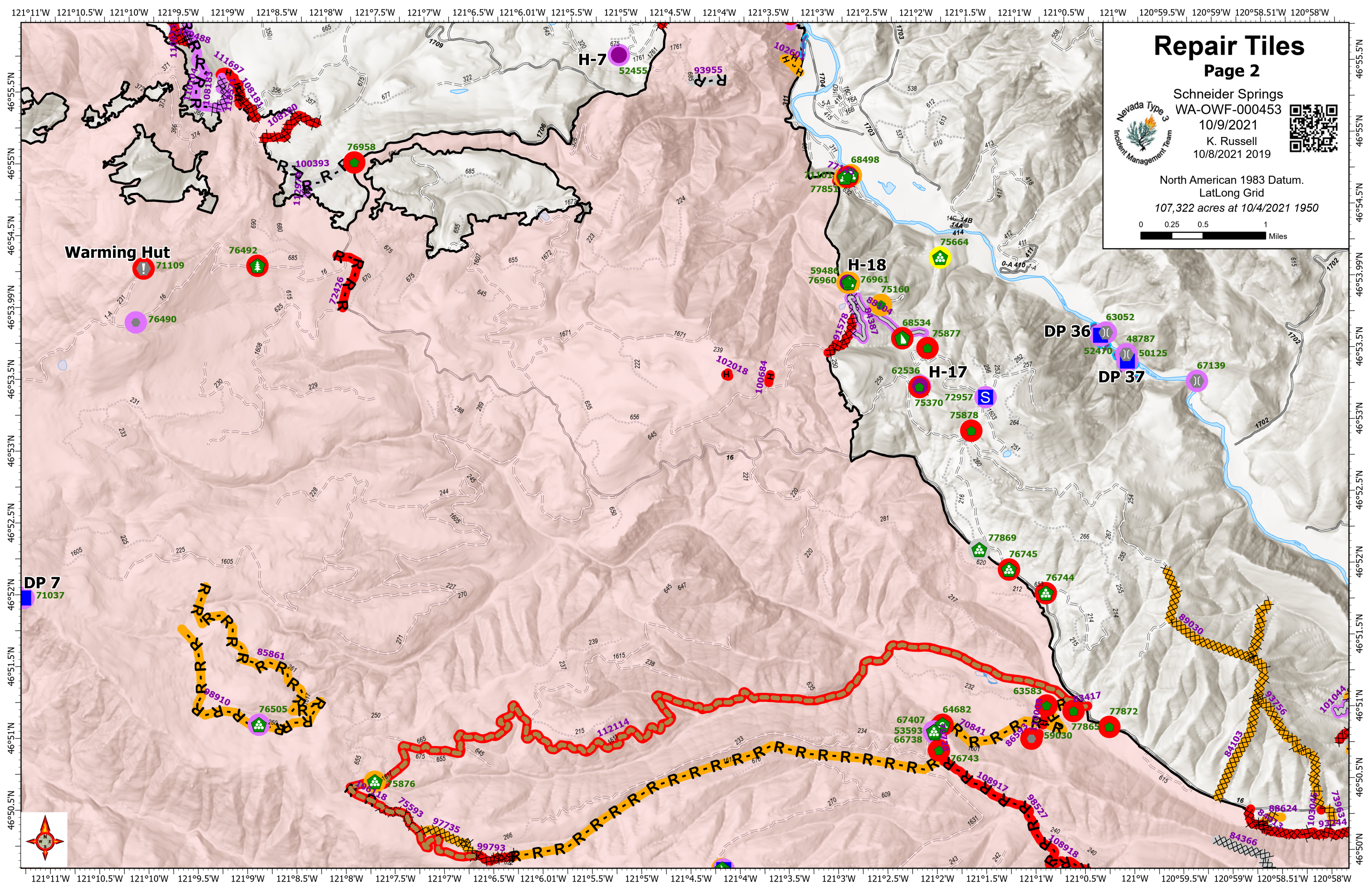


Schneider Springs
WA-OWF-000453
10/9/2021
K. Russell
10/8/2021 2018



North American 1983 Datum.
LatLong Grid
107,322 acres at 10/4/2021 1950





Repair Tiles

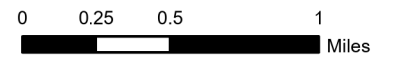
Page 2



Schneider Springs
WA-OWF-000453
10/9/2021
K. Russell
10/8/2021 2019



North American 1983 Datum.
LatLong Grid
107,322 acres at 10/4/2021 1950



Warming Hut

DP 7
71037

H-7

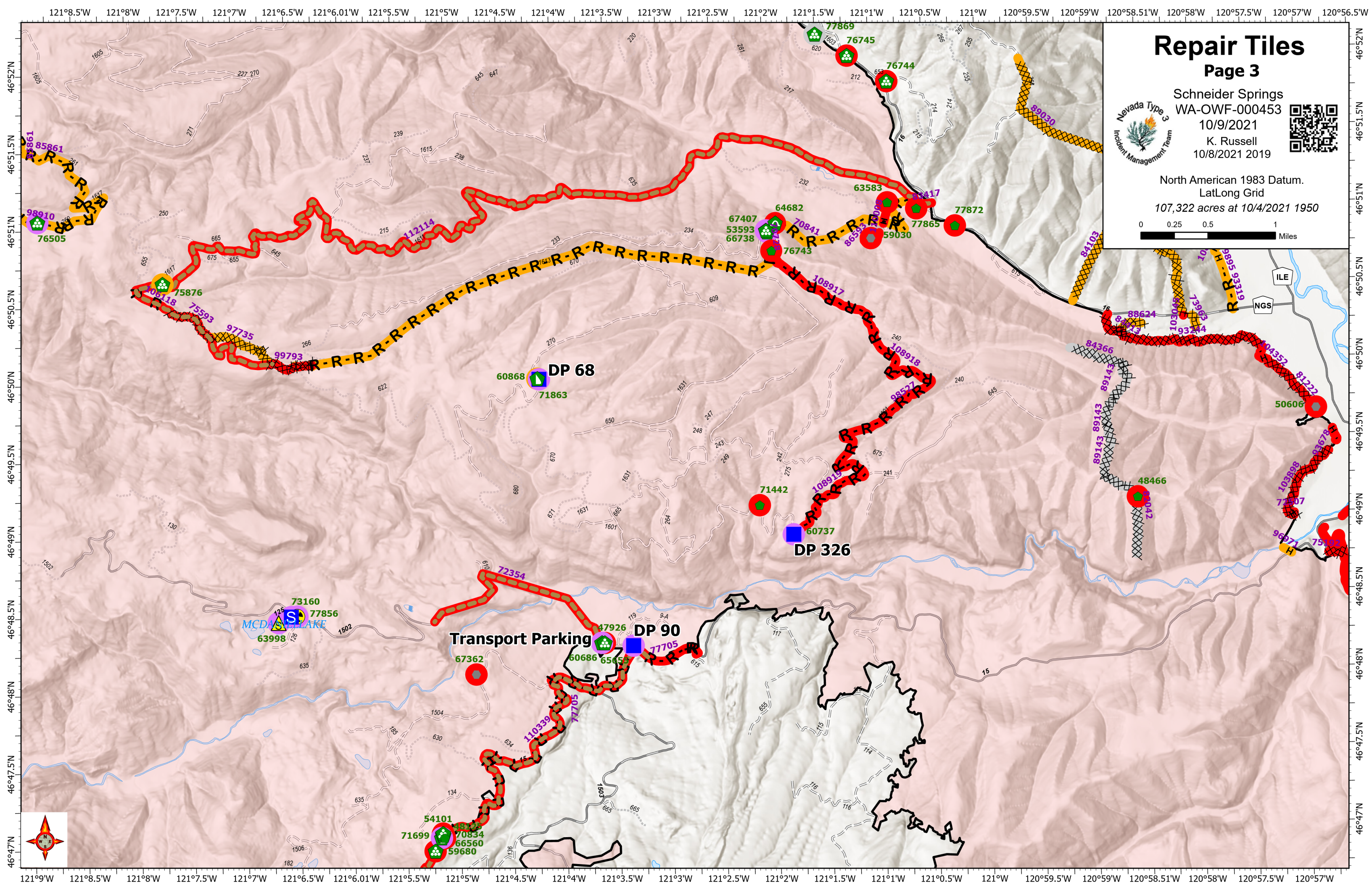
H-18

H-17

DP 36

DP 37





Repair Tiles

Page 3

Schneider Springs

WA-OWF-000453

10/9/2021

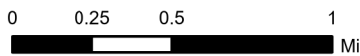
K. Russell

10/8/2021 2019

North American 1983 Datum.

LatLong Grid

107,322 acres at 10/4/2021 1950



Repair Tiles

Page 4



Schneider Springs

WA-OWF-000453

10/9/2021

K. Russell

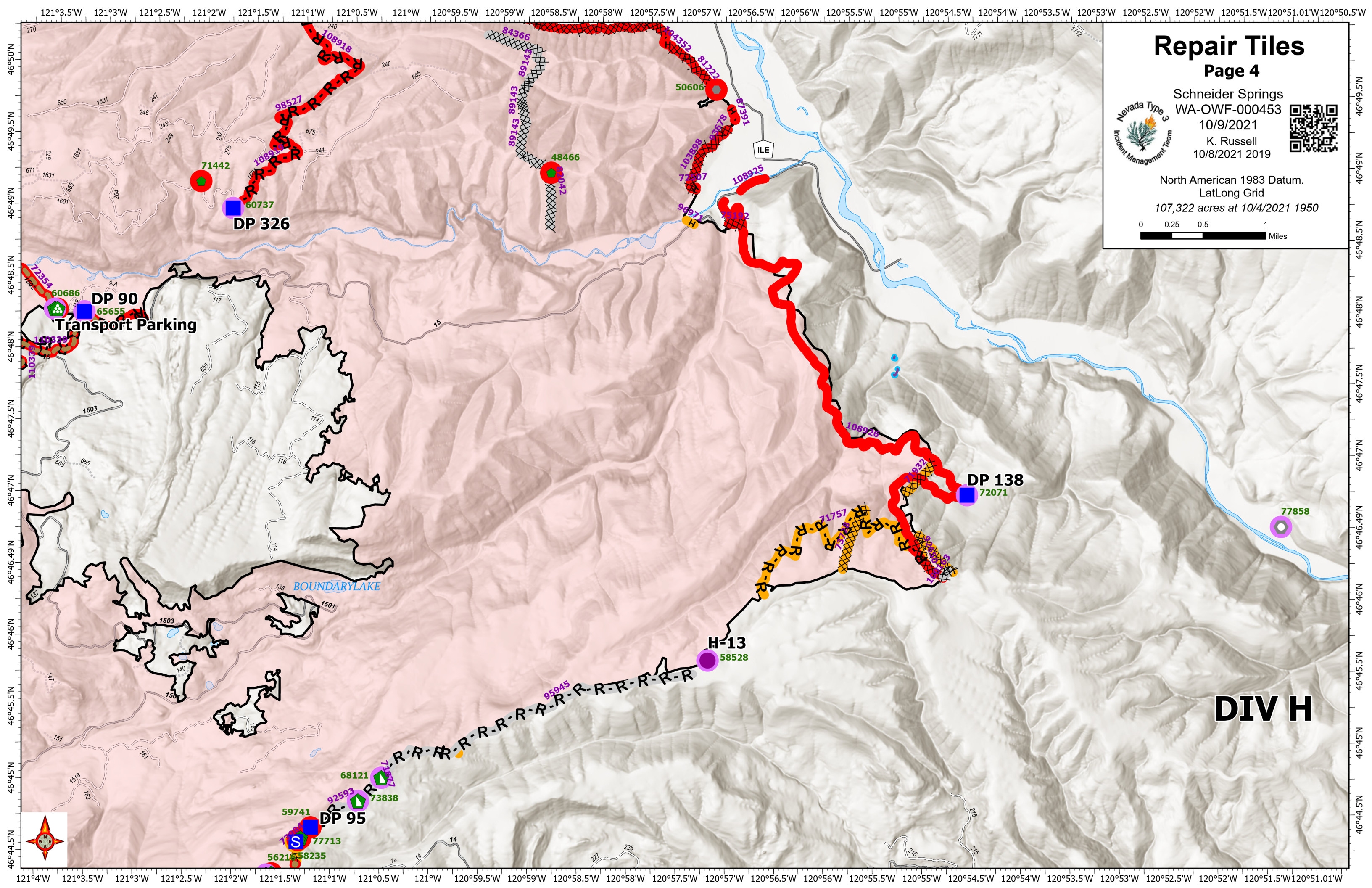
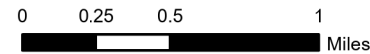
10/8/2021 2019



North American 1983 Datum.

LatLong Grid

107,322 acres at 10/4/2021 1950



DP 326

DP 90

Transport Parking

BOUNDARYLAKE

DP 138

H-13

DP 95

DIV H



Repair Tiles

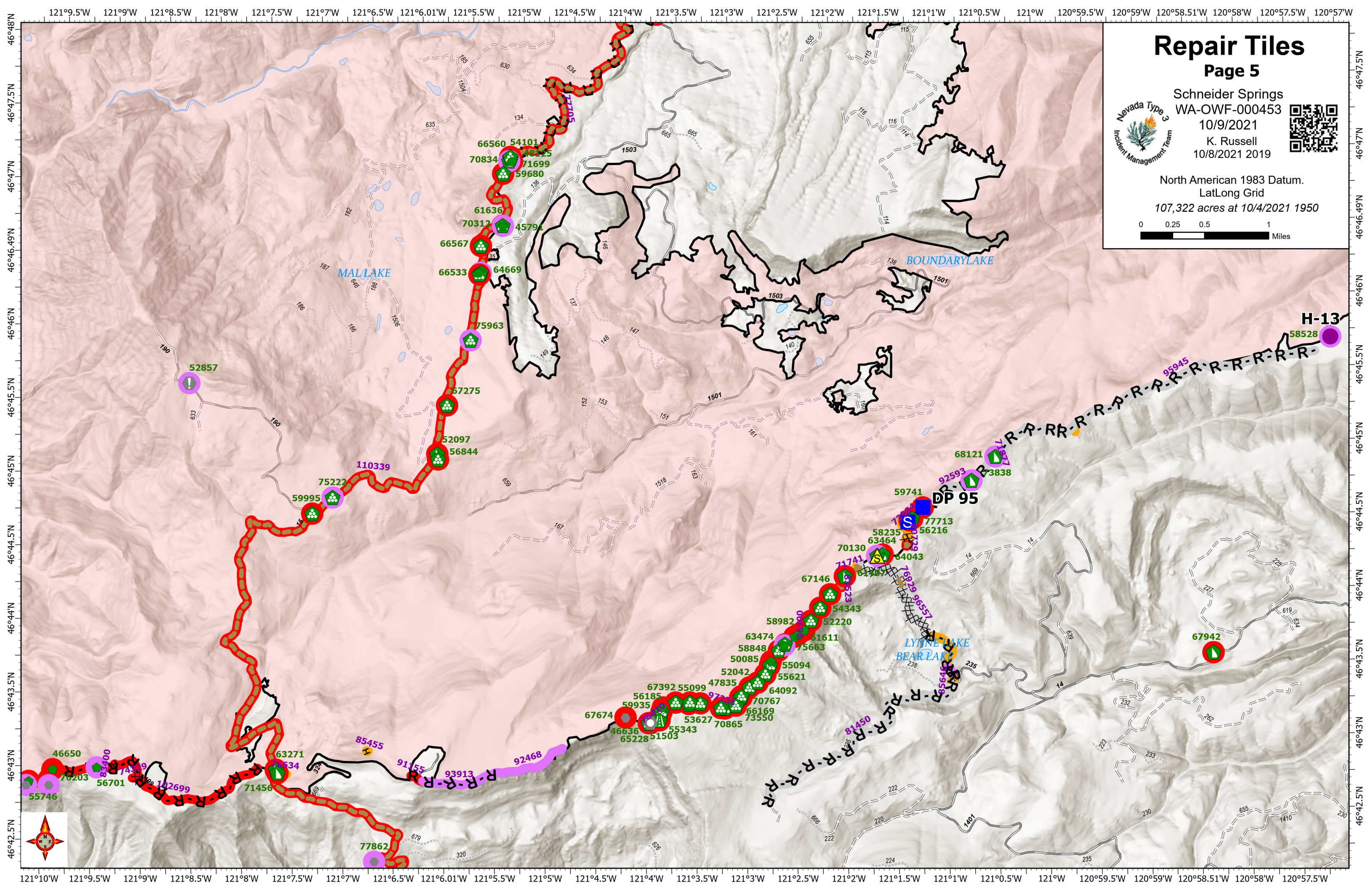
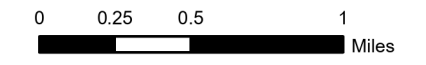
Page 5

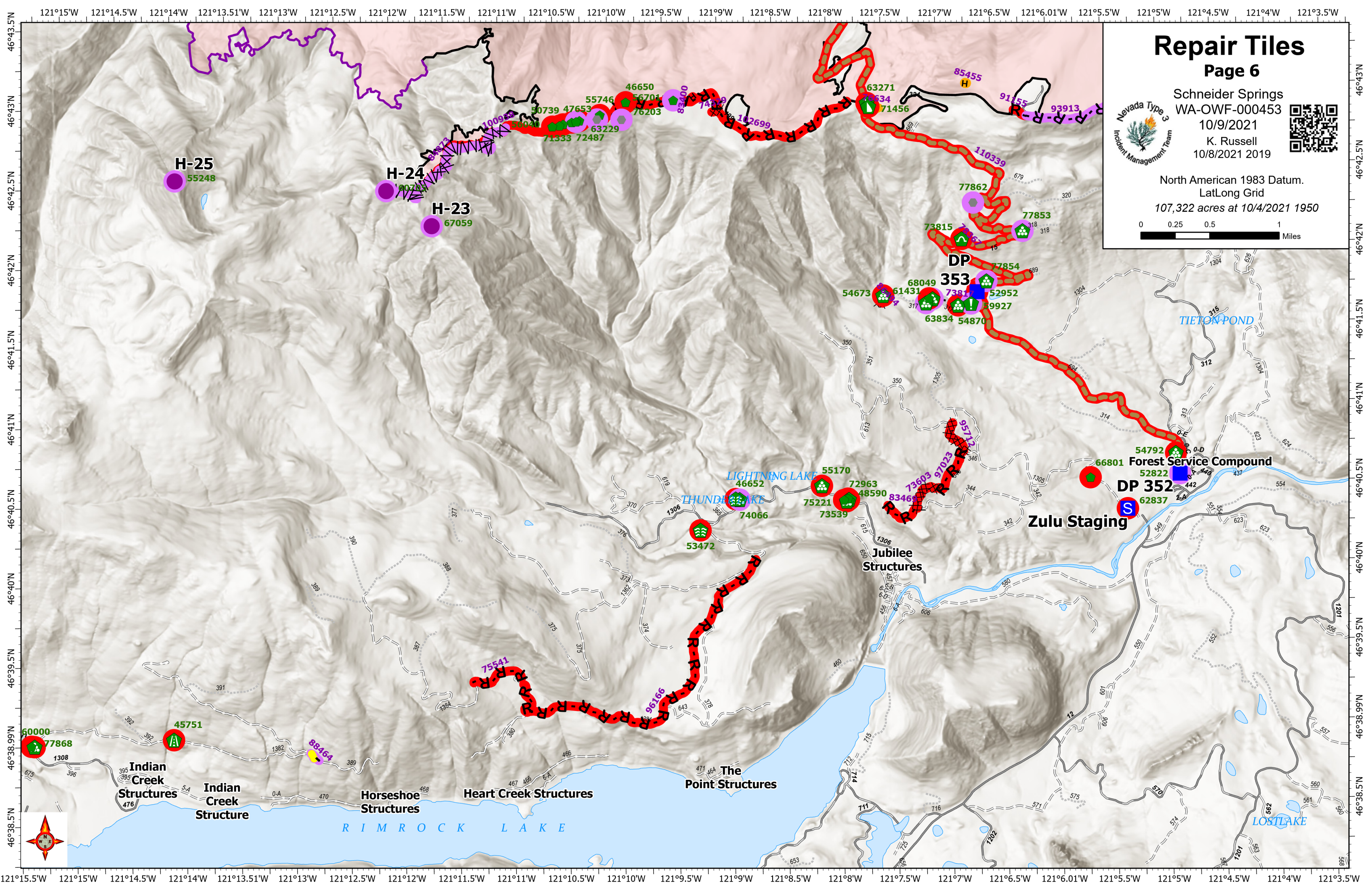


Schneider Springs
WA-OWF-000453
10/9/2021
K. Russell
10/8/2021 2019



North American 1983 Datum.
LatLong Grid
107,322 acres at 10/4/2021 1950





Repair Tiles

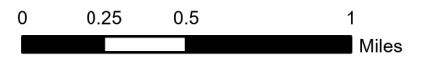
Page 6

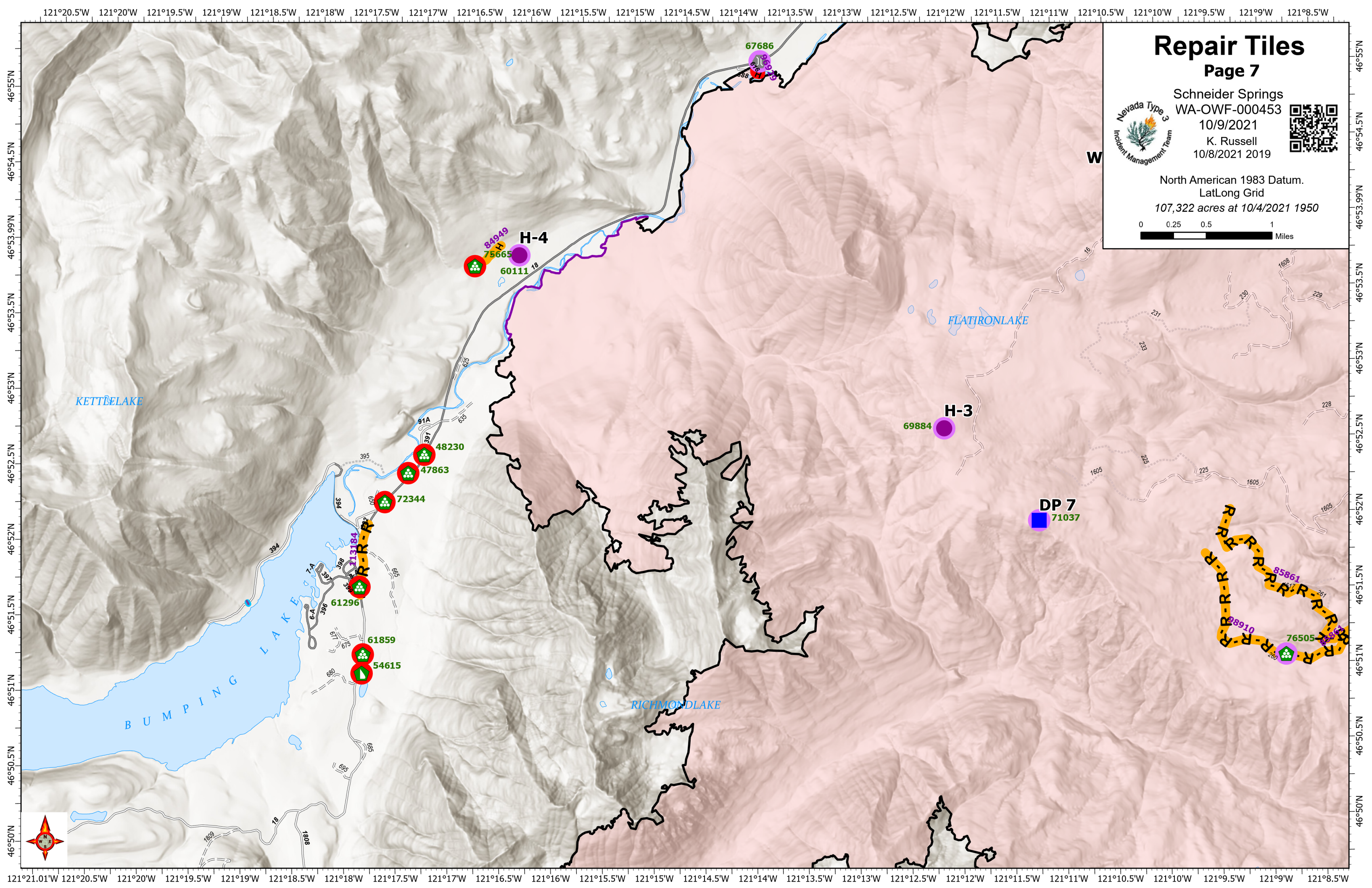


Schneider Springs
 WA-OWF-000453
 10/9/2021
 K. Russell
 10/8/2021 2019



North American 1983 Datum.
 LatLong Grid
 107,322 acres at 10/4/2021 1950





Repair Tiles

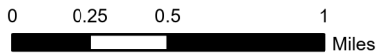
Page 7



Schneider Springs
 WA-OWF-000453
 10/9/2021
 K. Russell
 10/8/2021 2019



North American 1983 Datum.
 LatLong Grid
 107,322 acres at 10/4/2021 1950



KETTEL LAKE

FLATIRON LAKE

RICHMOND LAKE

BUMPING LAKE

H-4

H-3

DP 7

67686

84949

75665

60111

69884

71037

72344

47863

48230

61296

61859

54615

85861

76505

88910

