

# Repair Tiles

Page 1

Schneider Springs  
WA-OWF-000453

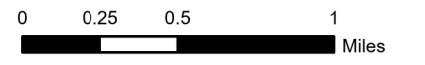
10/9/2021

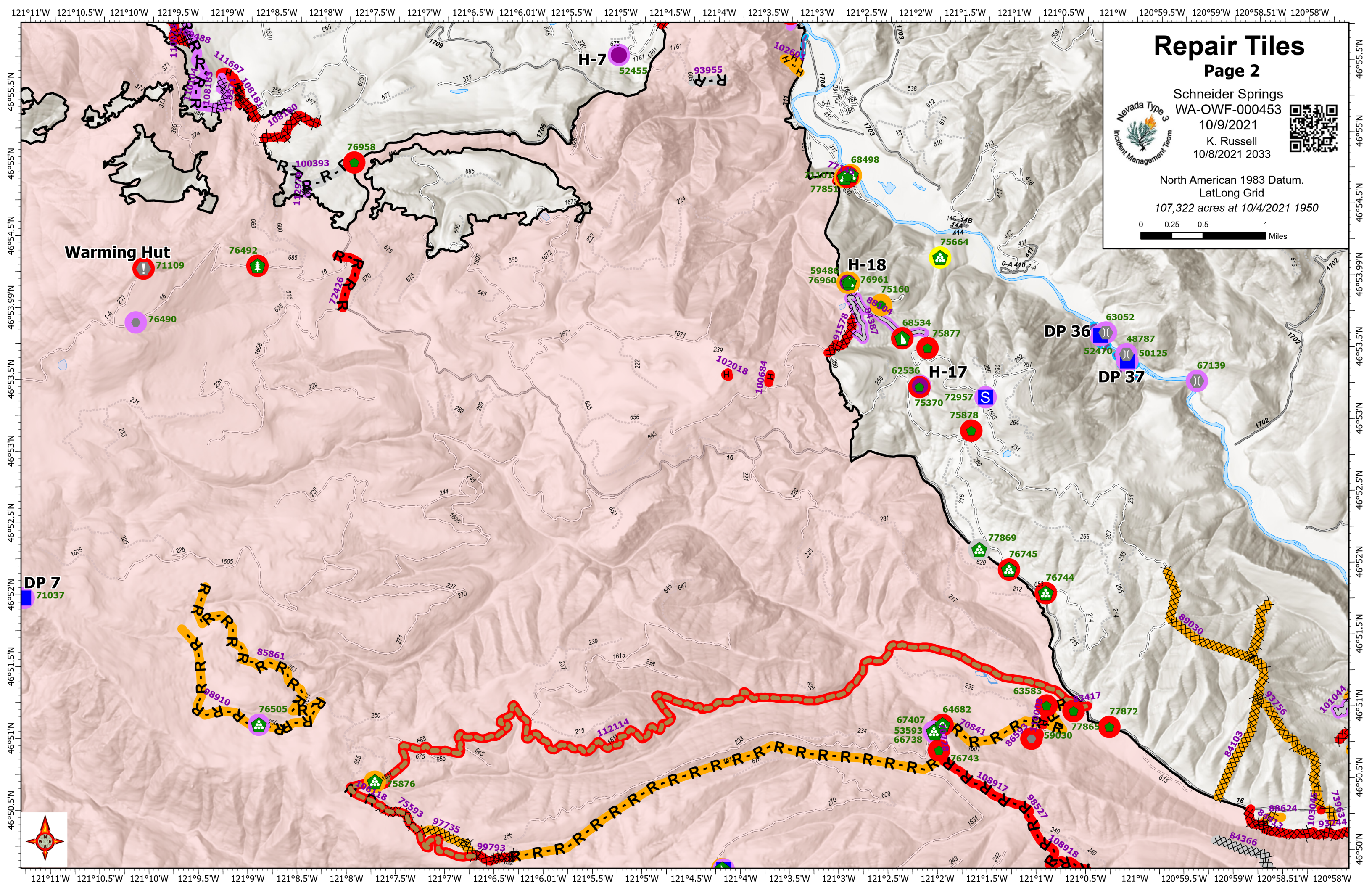
K. Russell

10/8/2021 2033



North American 1983 Datum.  
LatLong Grid  
107,322 acres at 10/4/2021 1950





# Repair Tiles

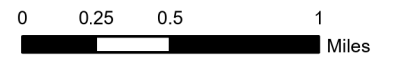
Page 2



Schneider Springs  
WA-OWF-000453  
10/9/2021  
K. Russell  
10/8/2021 2033



North American 1983 Datum.  
LatLong Grid  
107,322 acres at 10/4/2021 1950



DP 7  
71037

Warming Hut  
71109

H-7  
52455

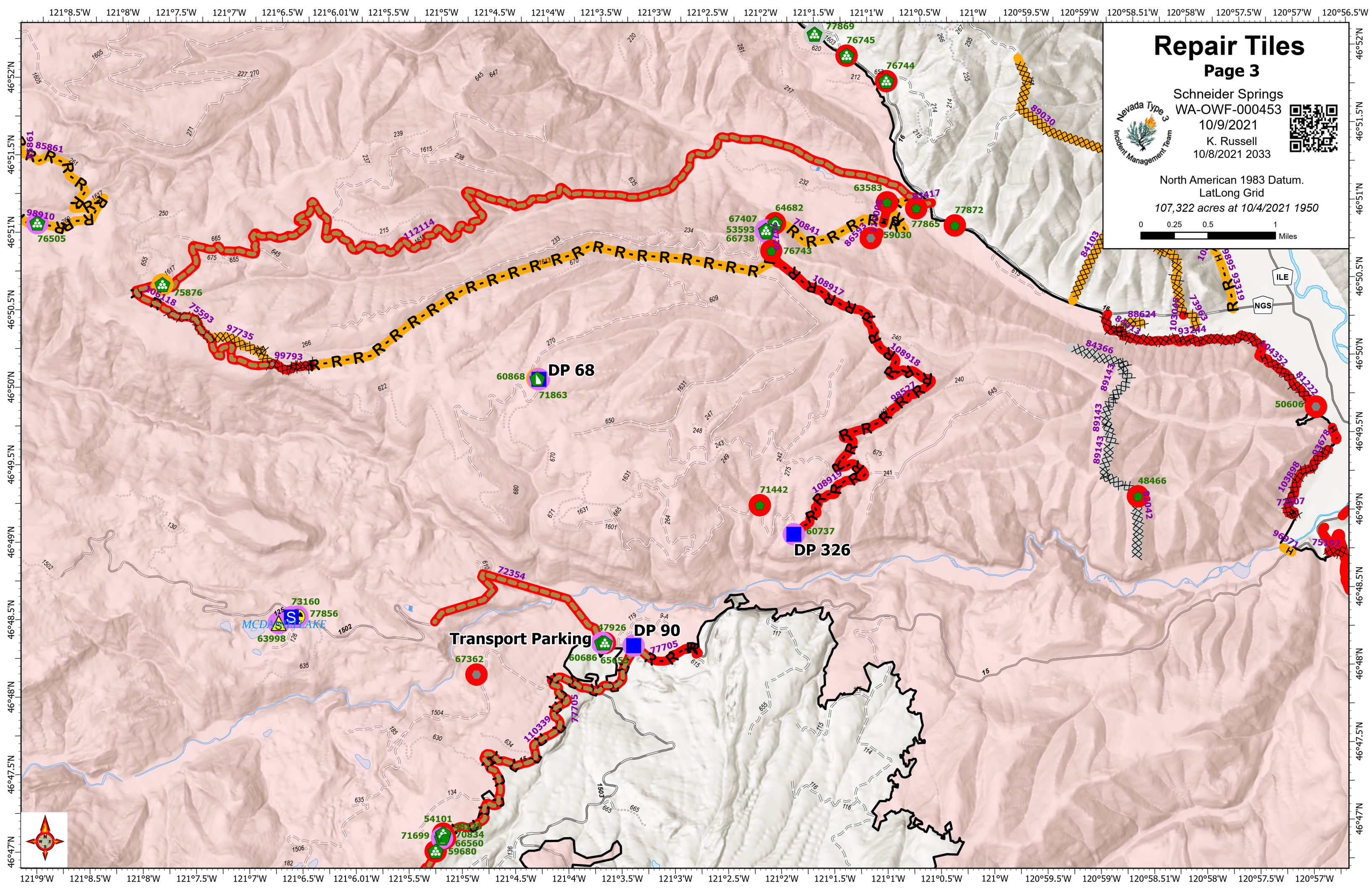
H-18  
76961

H-17  
72957

DP 36  
52470

DP 37  
50125





# Repair Tiles

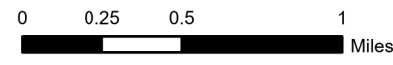
## Page 3



Schneider Springs  
WA-OWF-000453  
10/9/2021  
K. Russell  
10/8/2021 2033



North American 1983 Datum.  
LatLong Grid  
107,322 acres at 10/4/2021 1950



**Transport Parking**



**DP 90**



**DP 326**



**DP 68**



**MCDONALD'S LAKE**



# Repair Tiles

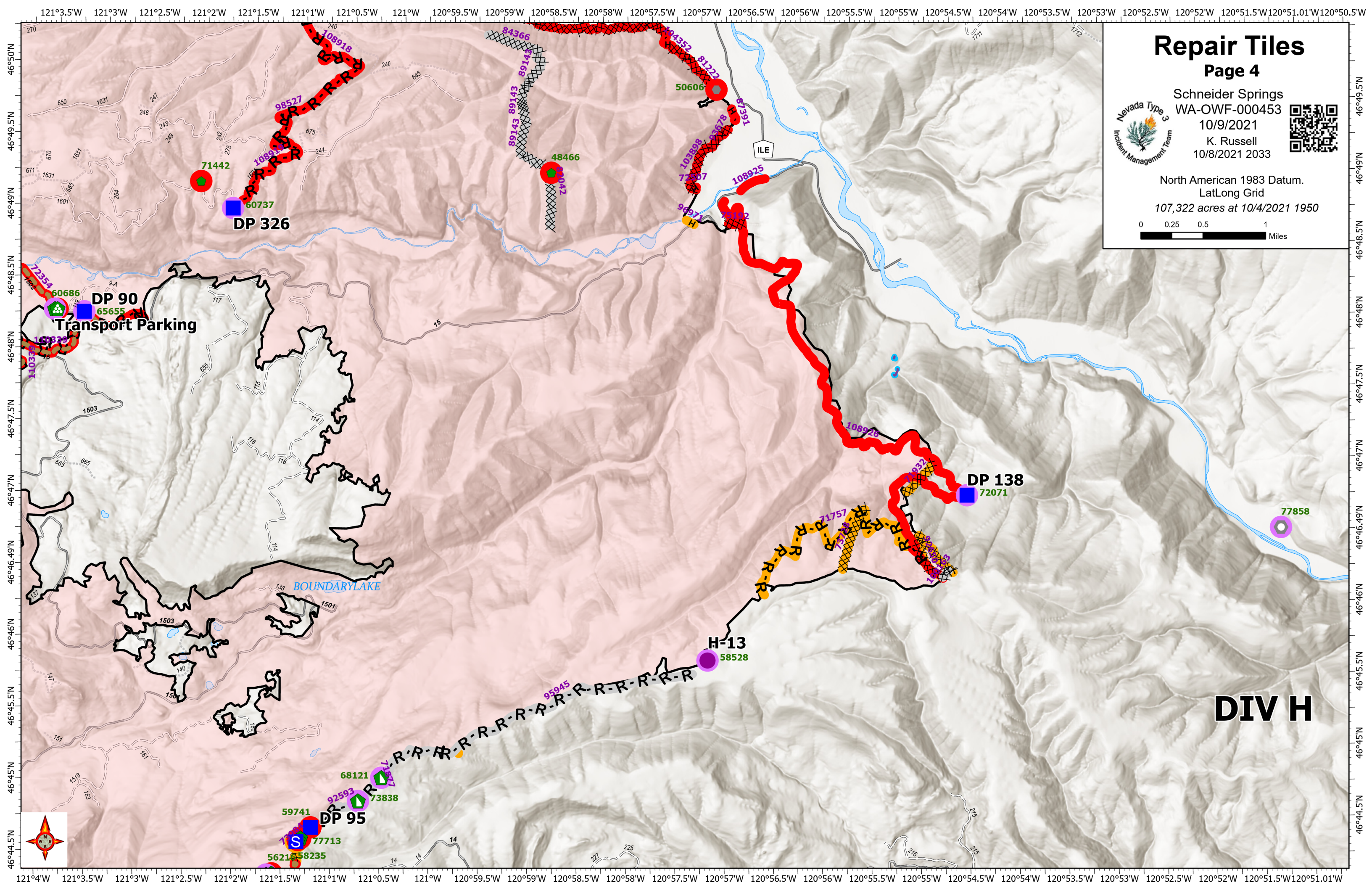
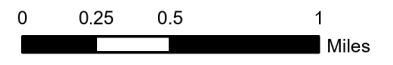
Page 4



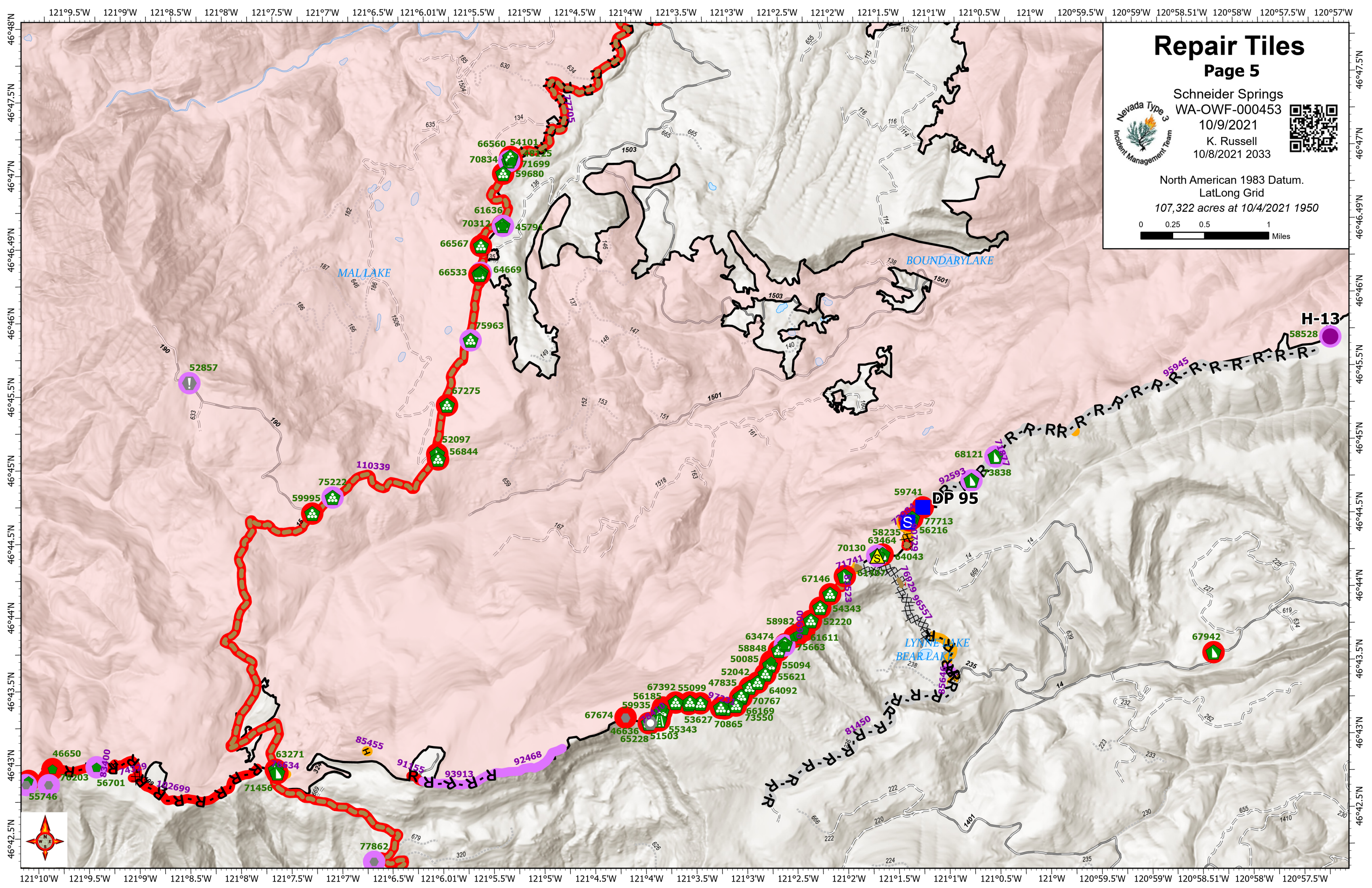
Schneider Springs  
WA-OWF-000453  
10/9/2021  
K. Russell  
10/8/2021 2033



North American 1983 Datum.  
LatLong Grid  
107,322 acres at 10/4/2021 1950



## DIV H



# Repair Tiles

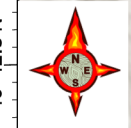
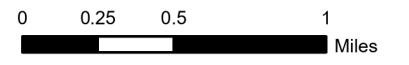
## Page 5

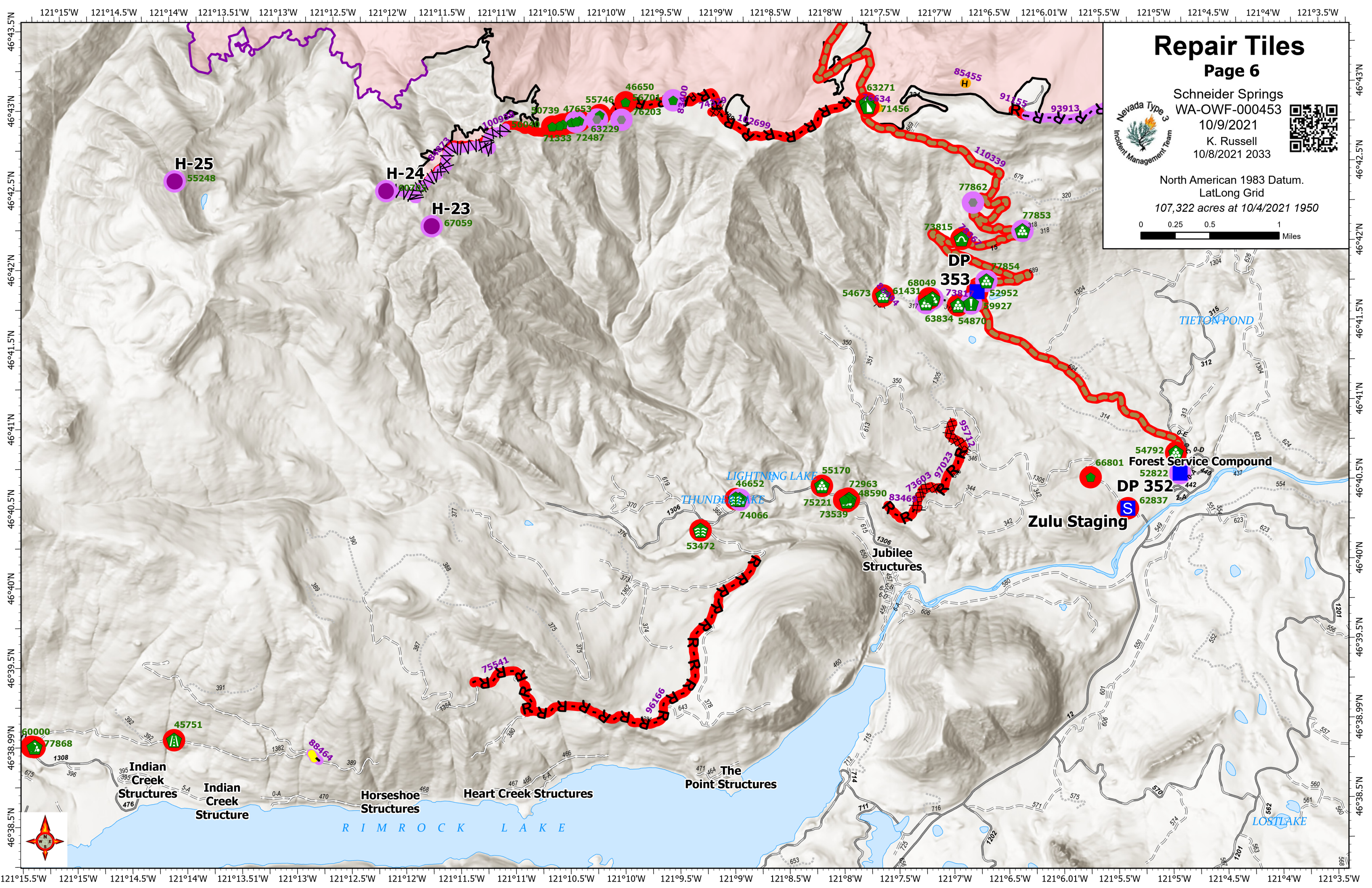


Schneider Springs  
WA-OWF-000453  
10/9/2021  
K. Russell  
10/8/2021 2033



North American 1983 Datum.  
LatLong Grid  
107,322 acres at 10/4/2021 1950





# Repair Tiles

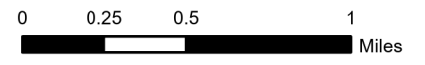
Page 6

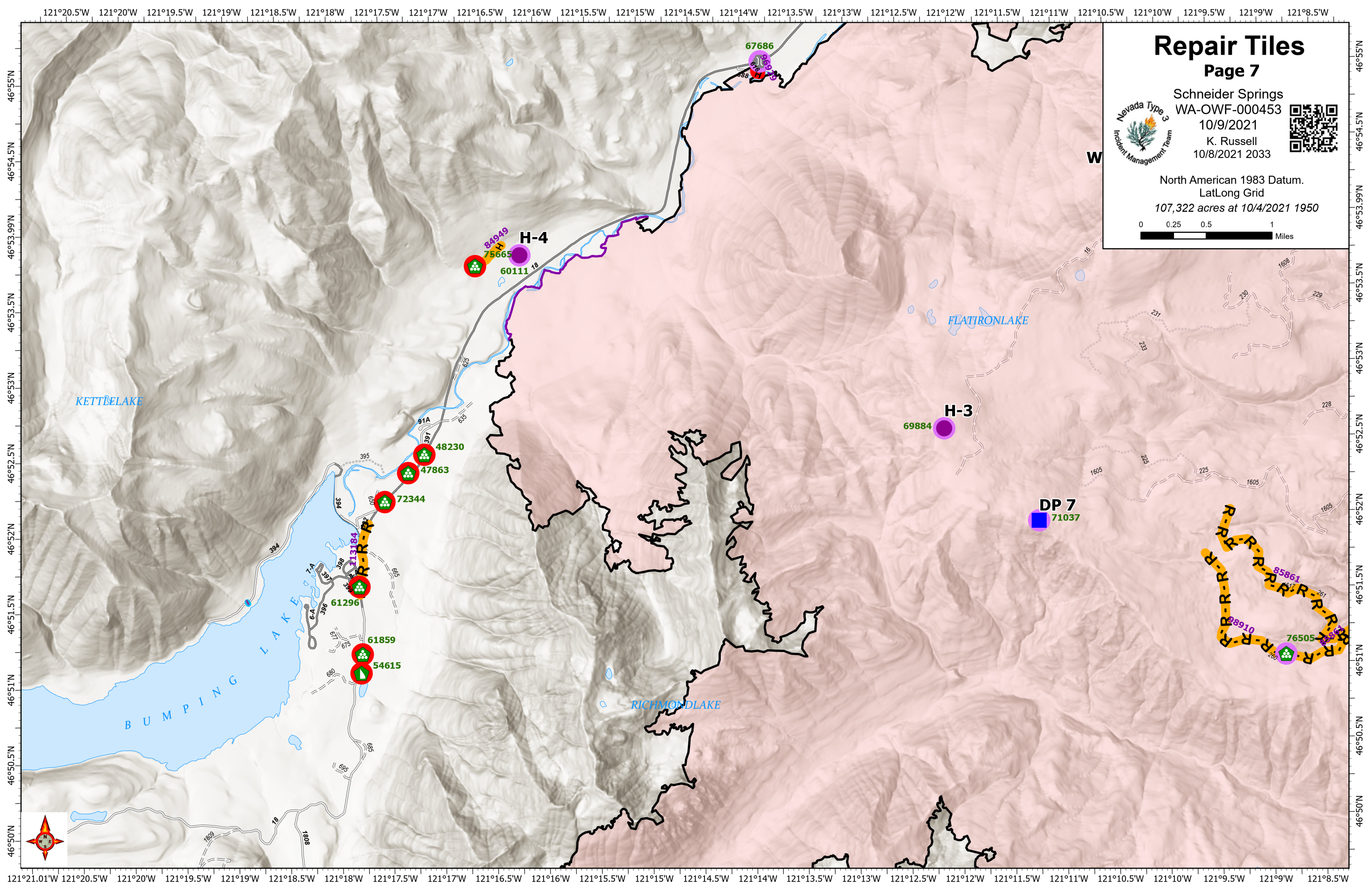


Schneider Springs  
WA-OWF-000453  
10/9/2021  
K. Russell  
10/8/2021 2033



North American 1983 Datum.  
LatLong Grid  
107,322 acres at 10/4/2021 1950





# Repair Tiles

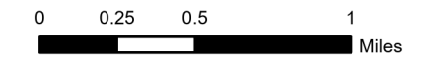
Page 7



Schneider Springs  
WA-OWF-000453  
10/9/2021  
K. Russell  
10/8/2021 2033



North American 1983 Datum.  
LatLong Grid  
107,322 acres at 10/4/2021 1950



KETTLELAKE

BUMPING LAKE

FLATIRONLAKE

RICHMONDLAKE

H-4

H-3

DP 7

R-R-R

R-R-R

67686

84949  
75665

60111

69884

71037

61296

61859

54615

72344

47863

48230

76505

85861

88910