

# Repair Tiles

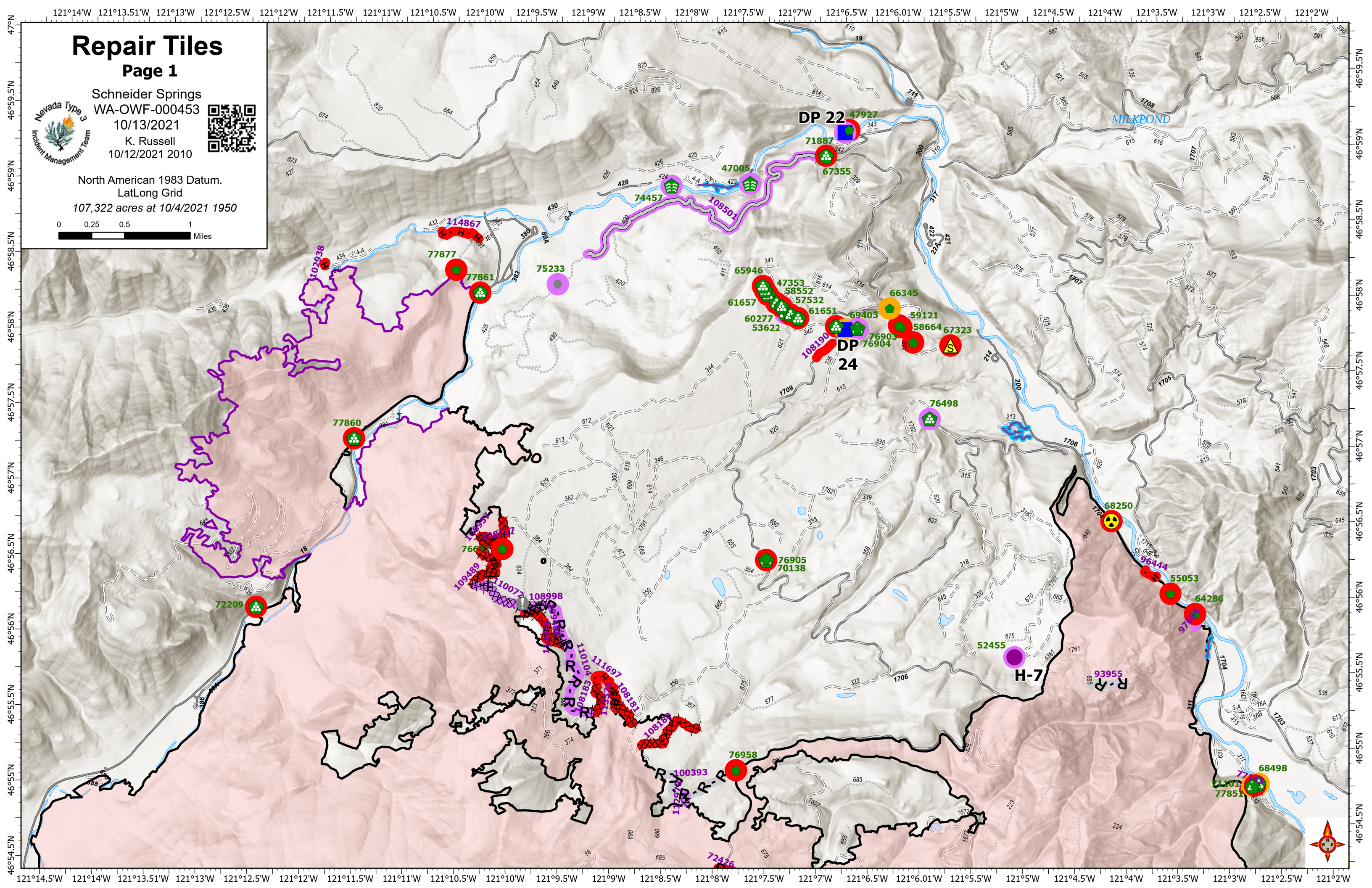
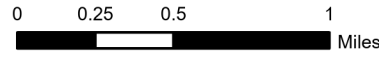
Page 1



Schneider Springs  
WA-OWF-000453  
10/13/2021  
K. Russell  
10/12/2021 2010



North American 1983 Datum.  
LatLong Grid  
107,322 acres at 10/4/2021 1950



DP 22 47927

71887  
67355

74457  
10850

65946  
47353  
58552  
57532  
61657  
60277  
53622

66345  
59121  
58664  
67323

DP 24  
108190  
76903  
76904

76498

77860

72209

766

76905  
70138

68250

96444

55053

64286

H-7

R-D  
93955

109489  
10072  
108998  
11010  
111697  
10813  
10813  
10813

76958

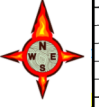
100393

11297

72426

68498

77851



# Repair Tiles

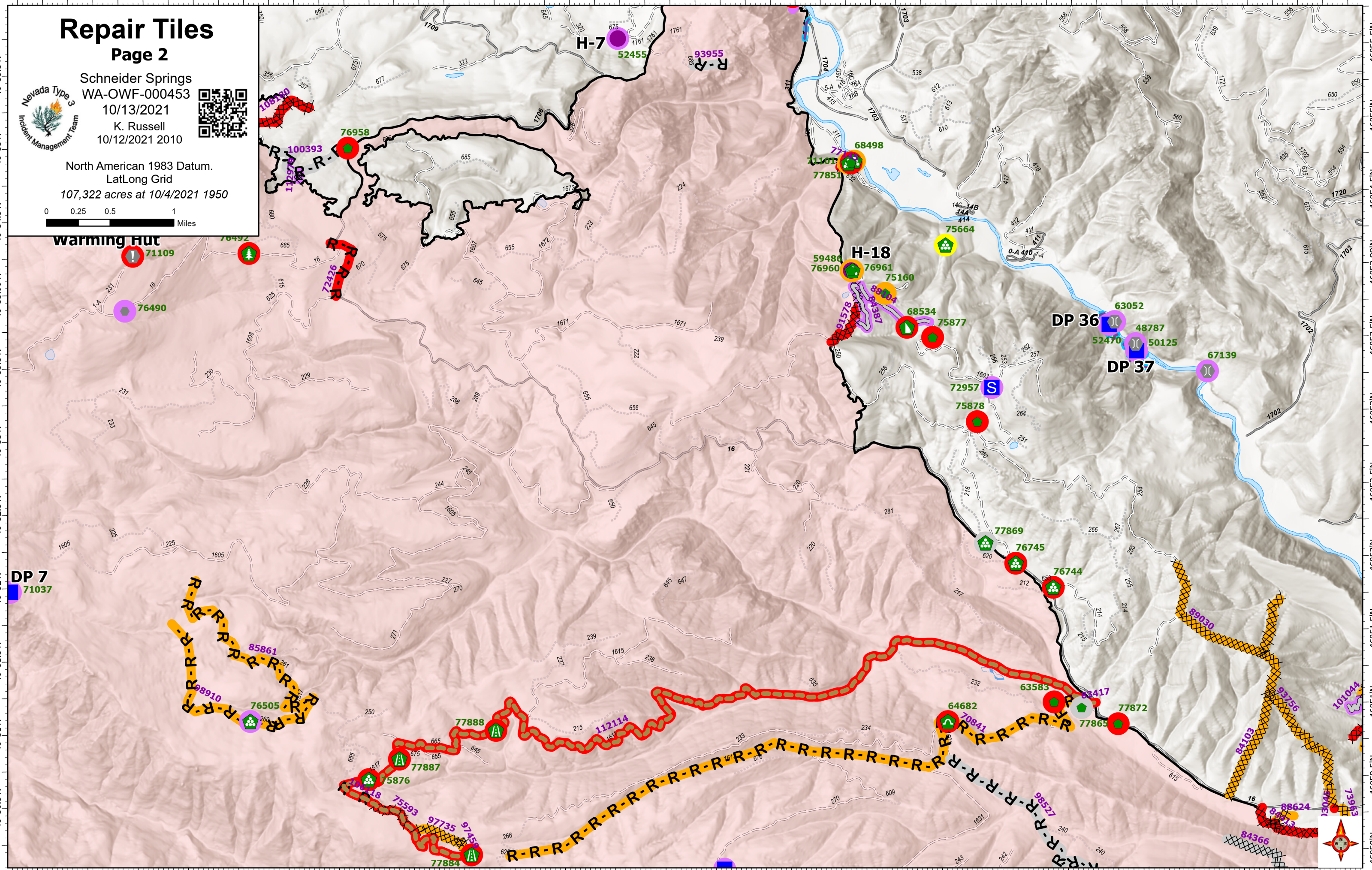
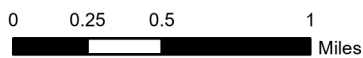
Page 2



Schneider Springs  
WA-OWF-000453  
10/13/2021  
K. Russell  
10/12/2021 2010



North American 1983 Datum.  
LatLong Grid  
107,322 acres at 10/4/2021 1950



**Warming Hut**

**DP 7**  
71037

**H-7**  
52455

**H-18**  
76961

**DP 36**  
63052

**DP 37**  
50125

R-R-R  
85861  
76505

R-R-R  
77888  
77887  
75876  
75593  
97735  
97455  
77884

R-R-R  
64682  
70841

R-R-R  
89030  
84103  
84366  
97756  
101044  
73963  
88624  
85112  
79061

# Repair Tiles

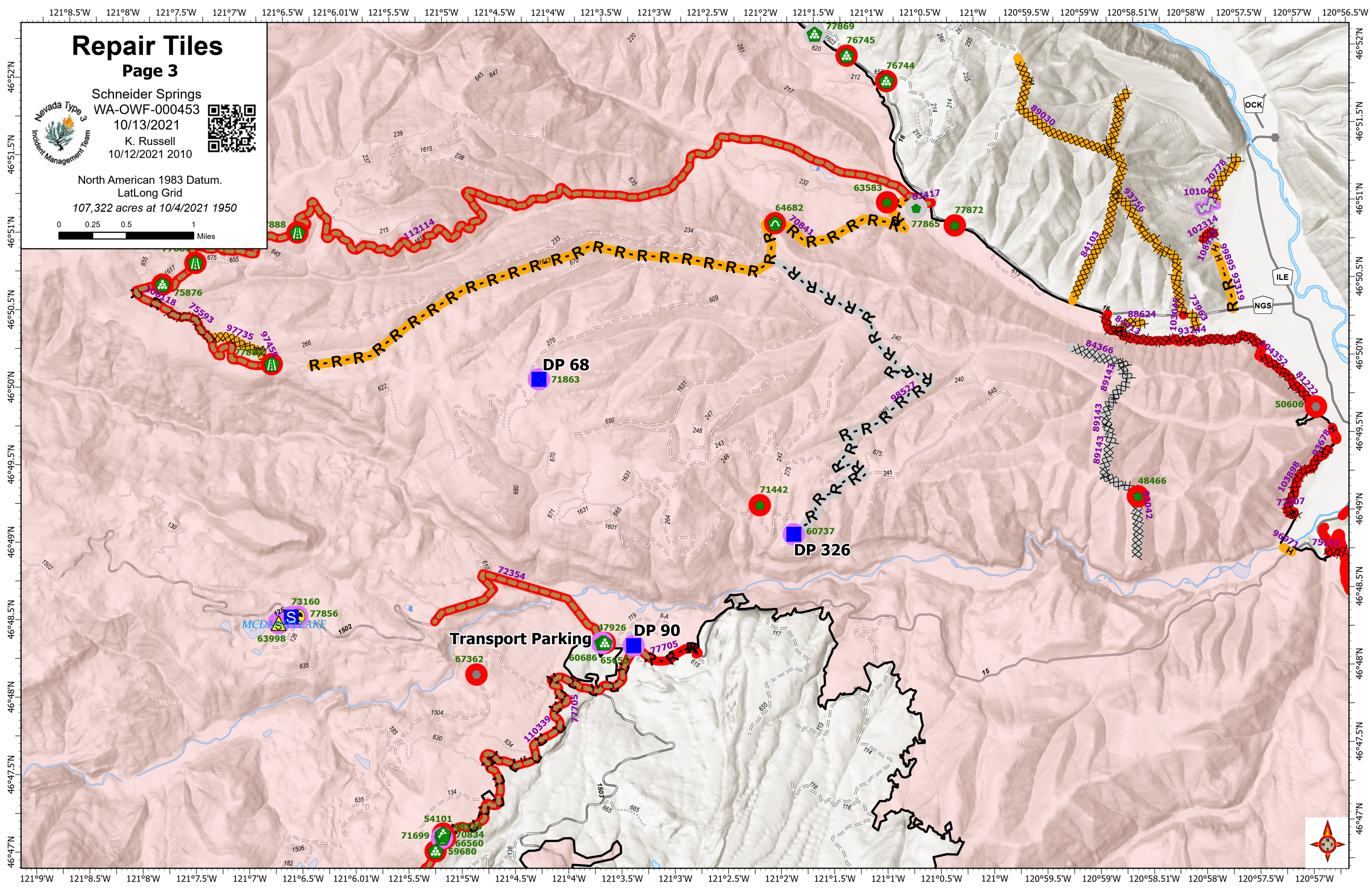
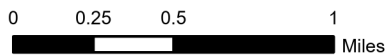
Page 3



Schneider Springs  
WA-OWF-000453  
10/13/2021  
K. Russell  
10/12/2021 2010



North American 1983 Datum.  
LatLong Grid  
107,322 acres at 10/4/2021 1950



# Repair Tiles

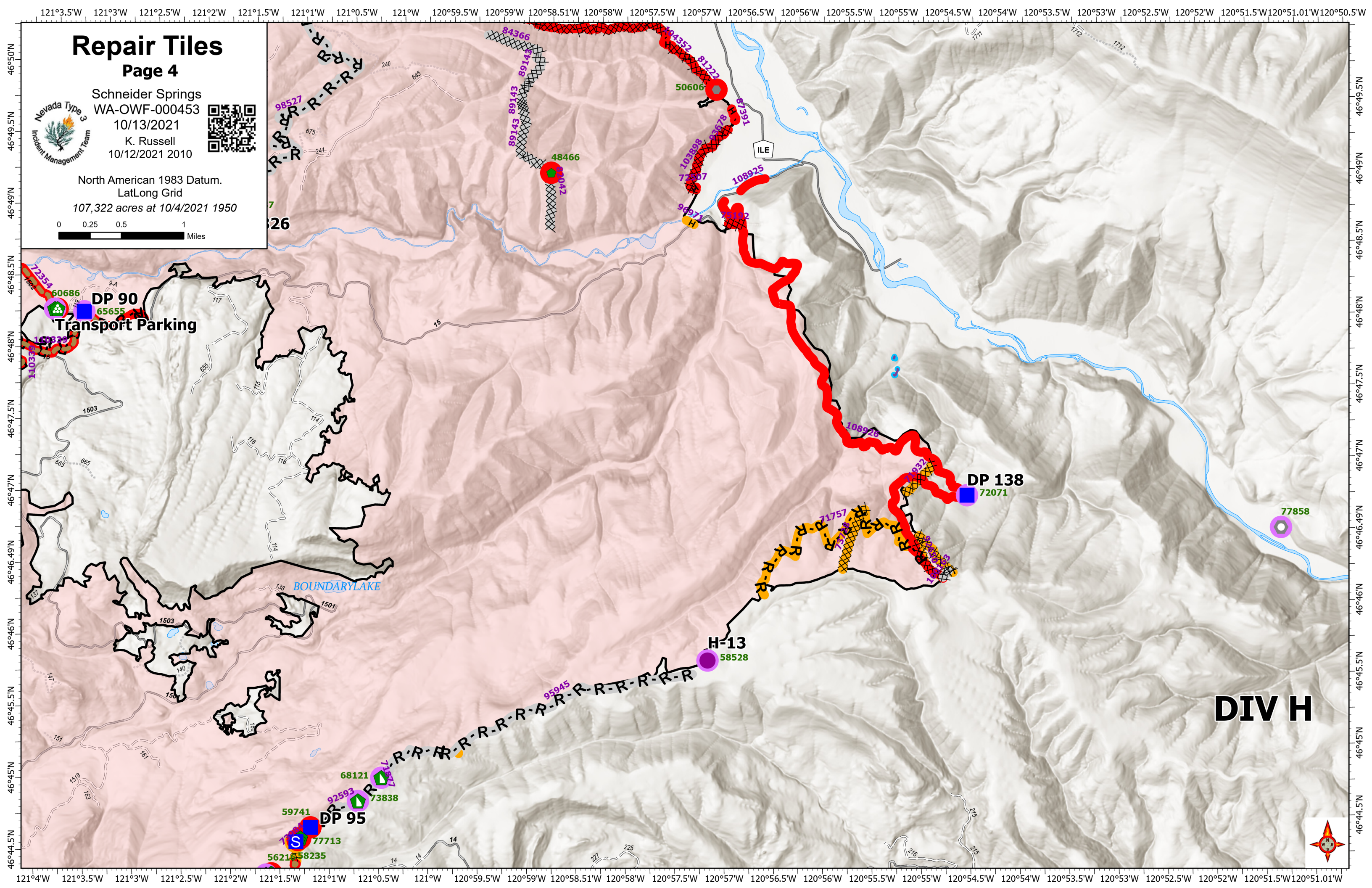
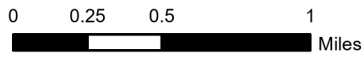
Page 4



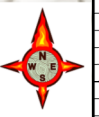
Schneider Springs  
WA-OWF-000453  
10/13/2021  
K. Russell  
10/12/2021 2010



North American 1983 Datum.  
LatLong Grid  
107,322 acres at 10/4/2021 1950



## DIV H



# Repair Tiles

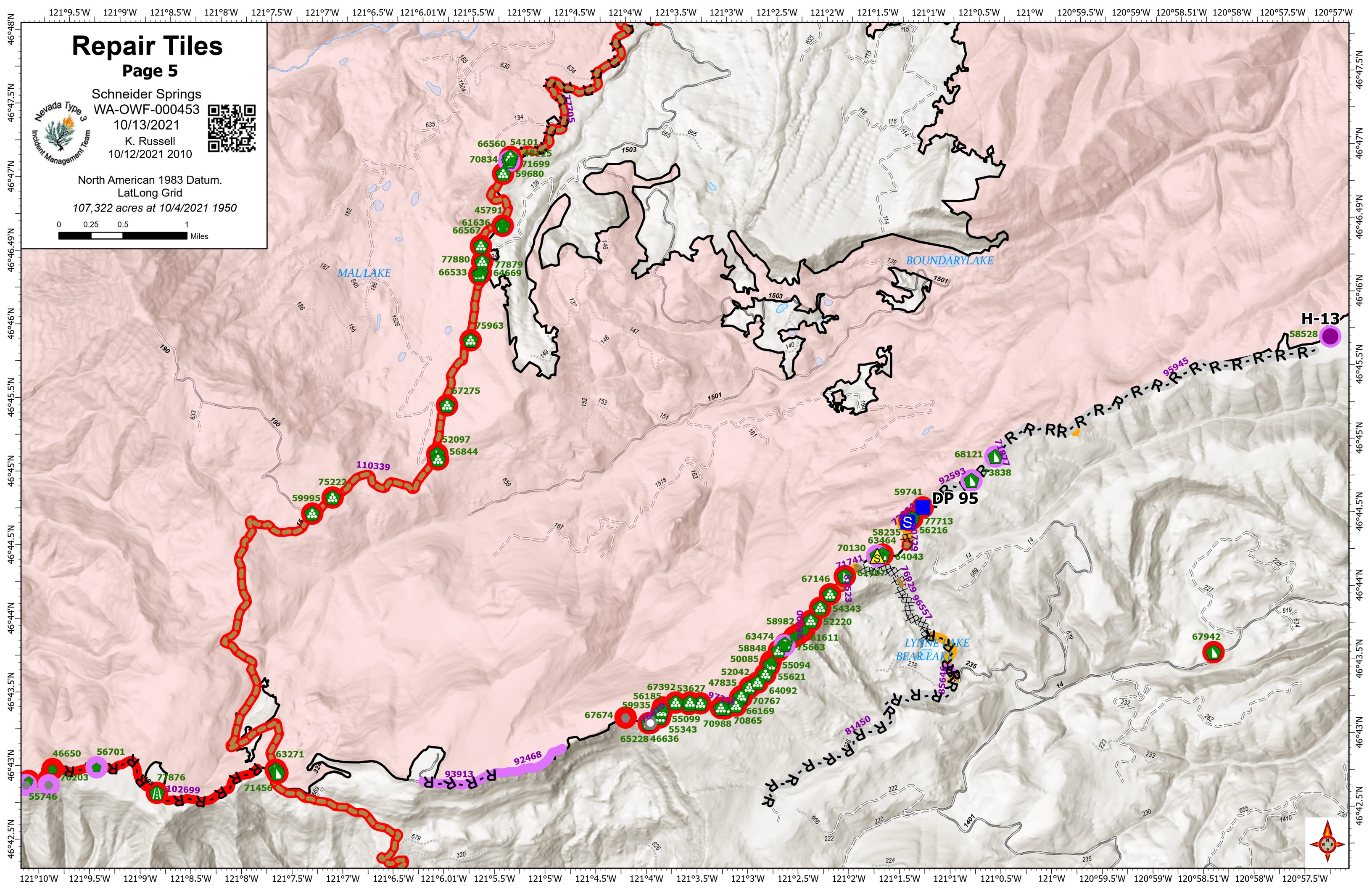
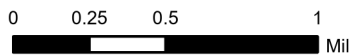
Page 5



Schneider Springs  
WA-OWF-000453  
10/13/2021  
K. Russell  
10/12/2021 2010



North American 1983 Datum.  
LatLong Grid  
107,322 acres at 10/4/2021 1950



# Repair Tiles

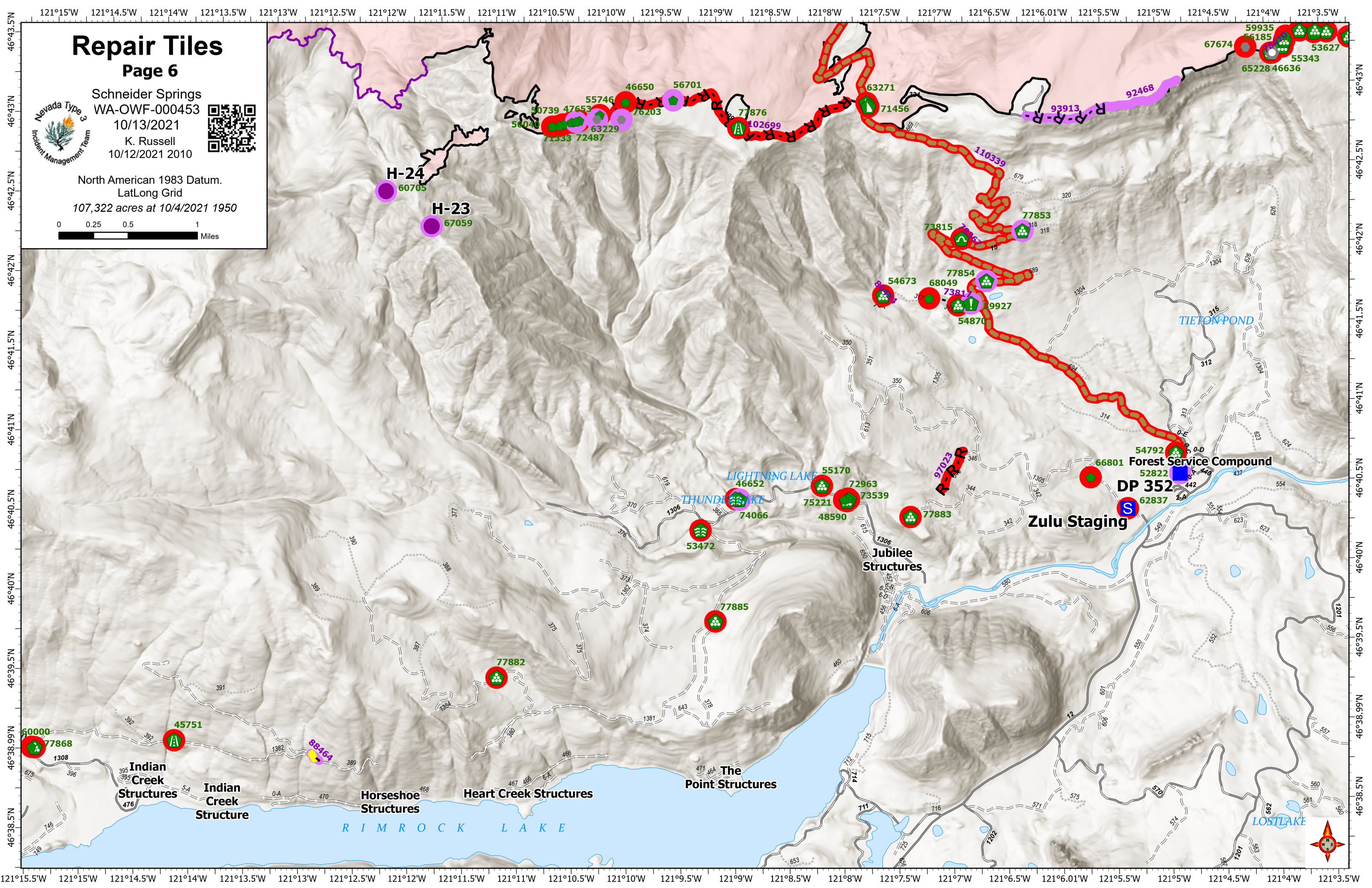
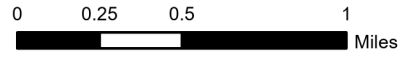
Page 6



Schneider Springs  
WA-OWF-000453  
10/13/2021  
K. Russell  
10/12/2021 2010



North American 1983 Datum.  
LatLong Grid  
107,322 acres at 10/4/2021 1950



H-24  
60705

H-23  
67059

Forest Service Compound

Zulu Staging

Jubilee Structures

The Point Structures

Heart Creek Structures

Horseshoe Structures

Indian Creek Structures

Indian Creek Structure

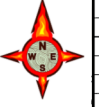
RIMROCK LAKE

TETON POND

LIGHTNING LAKE

THUNDER LAKE

LOST LAKE



# Repair Tiles

Page 7



Schneider Springs  
WA-OWF-000453  
10/13/2021  
K. Russell  
10/12/2021 2010



North American 1983 Datum.  
LatLong Grid  
107,322 acres at 10/4/2021 1950

