

DP 22 47927

MILK POND

Repair Tiles

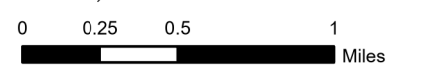
Page 1

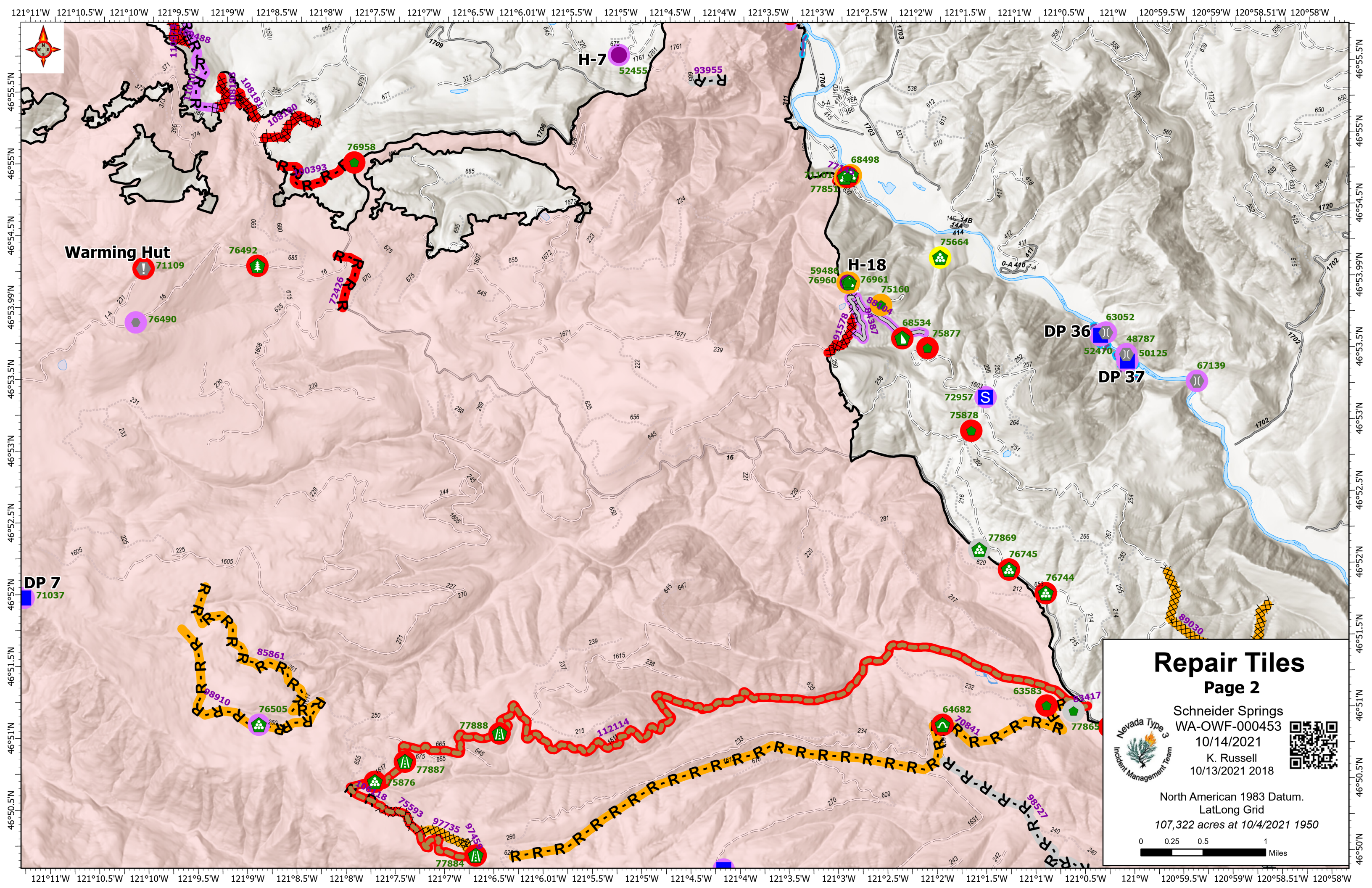


Schneider Springs
WA-OWF-000453
10/14/2021
K. Russell
10/13/2021 2017



North American 1983 Datum.
LatLong Grid
107,322 acres at 10/4/2021 1950





Warming Hut

DP 7
71037

H-7

H-18

DP 36

DP 37

Repair Tiles

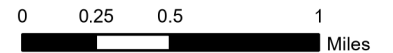
Page 2

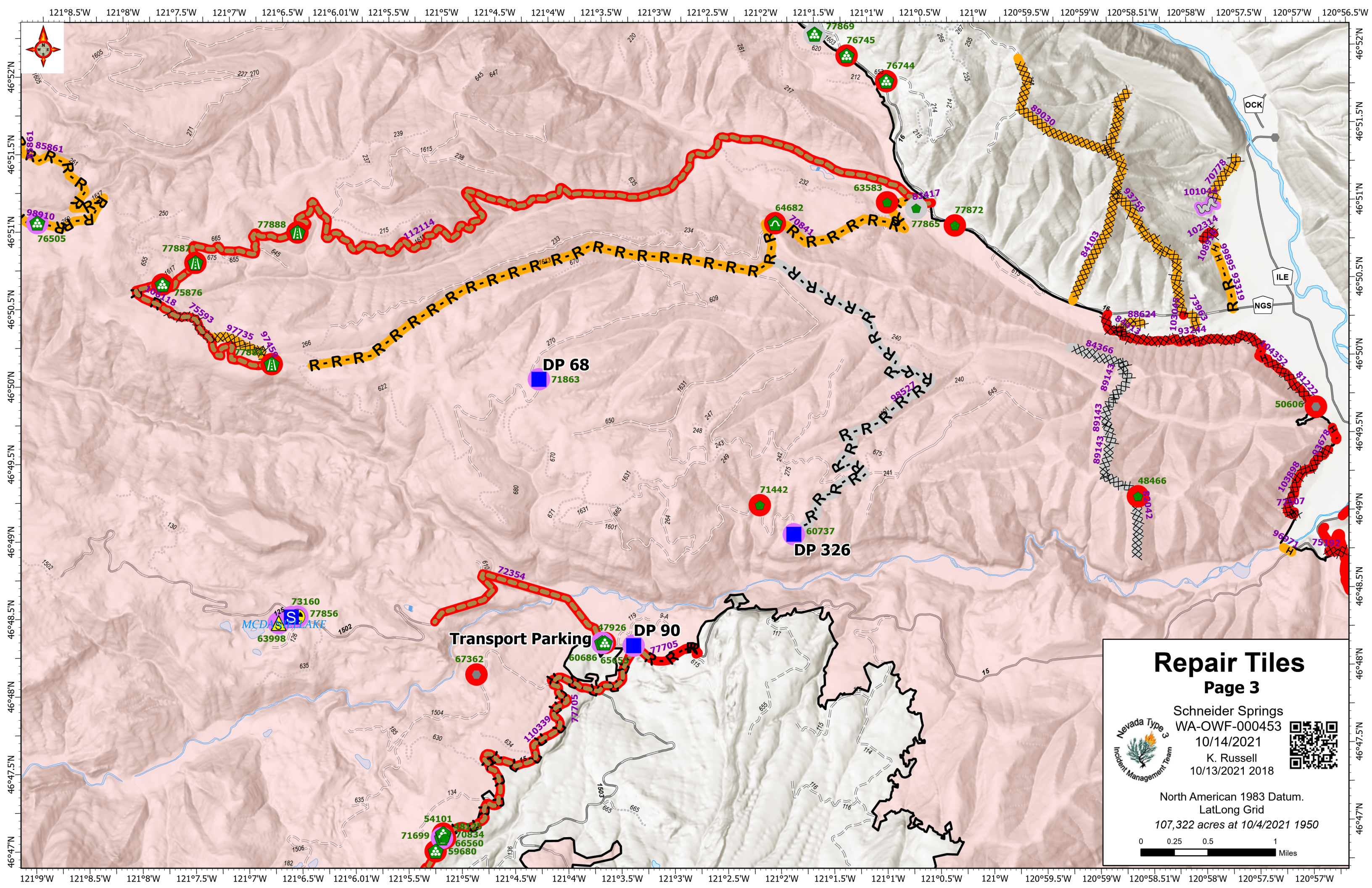


Schneider Springs
WA-OWF-000453
10/14/2021
K. Russell
10/13/2021 2018



North American 1983 Datum.
LatLong Grid
107,322 acres at 10/4/2021 1950





Repair Tiles

Page 3

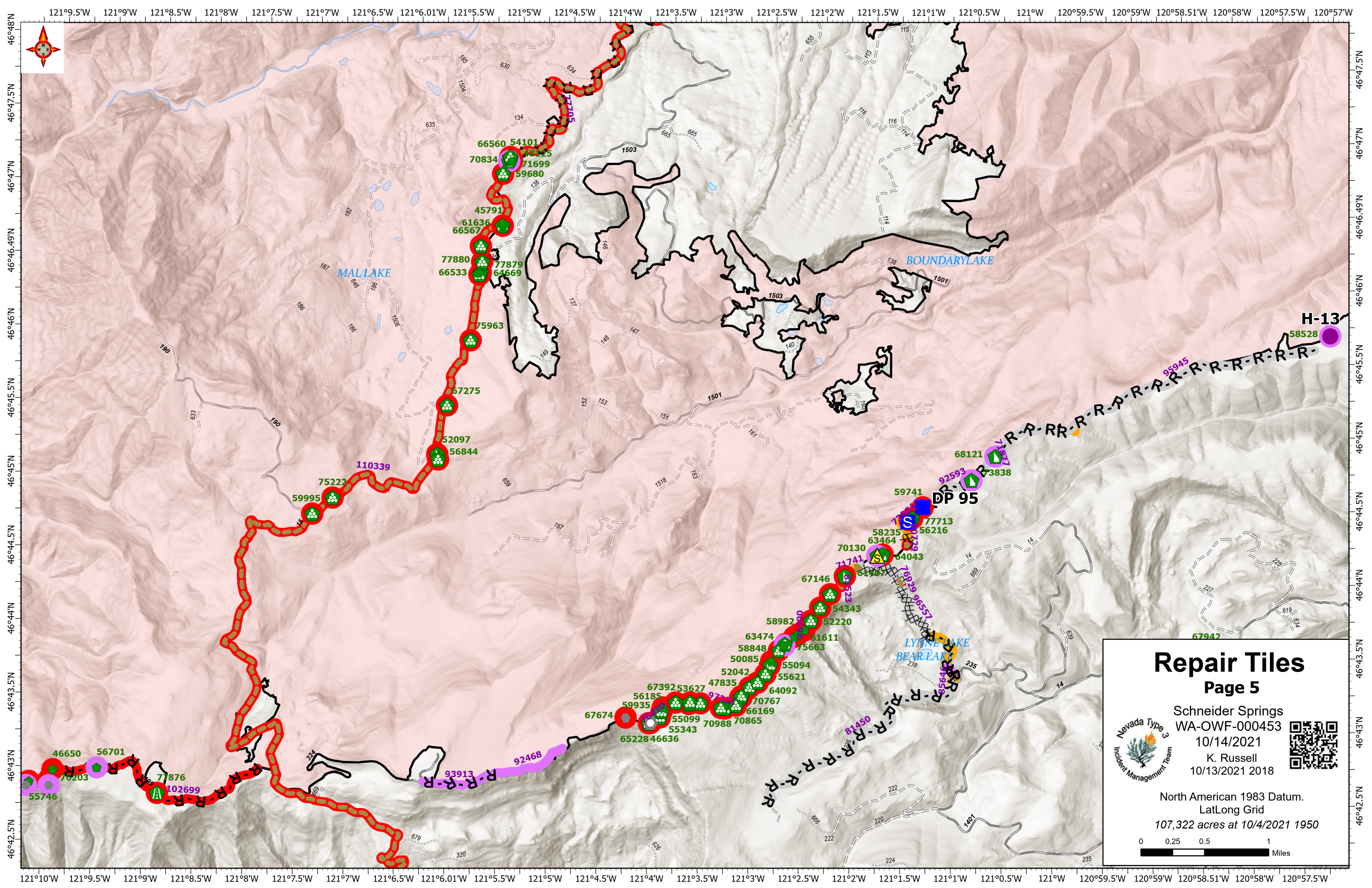


Schneider Springs
WA-OWF-000453
10/14/2021
K. Russell
10/13/2021 2018



North American 1983 Datum.
LatLong Grid
107,322 acres at 10/4/2021 1950





Repair Tiles

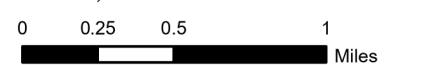
Page 5

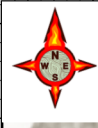
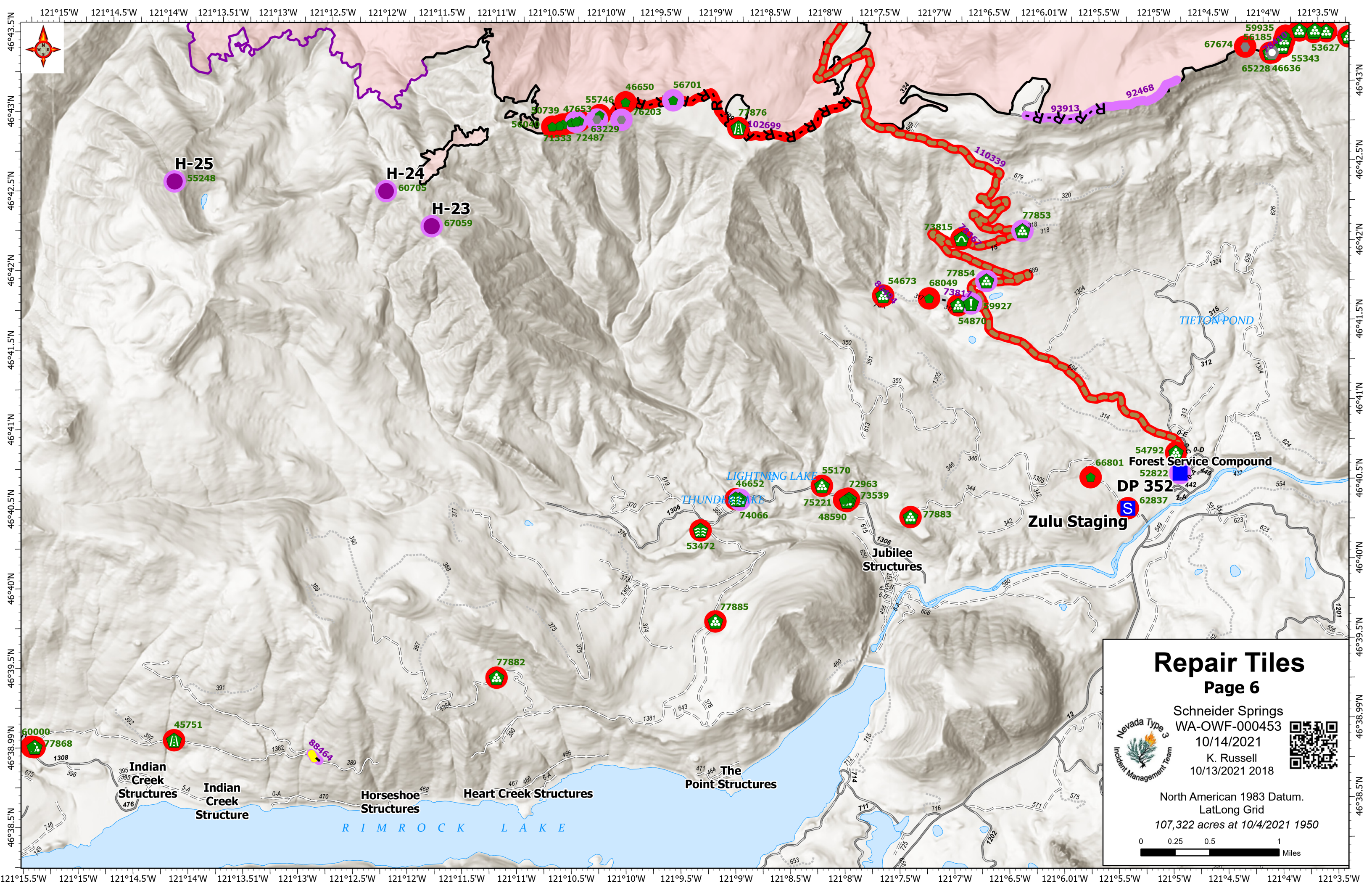


Schneider Springs
WA-OWF-000453
10/14/2021
K. Russell
10/13/2021 2018



North American 1983 Datum.
LatLong Grid
107,322 acres at 10/4/2021 1950





H-25
55248

H-24
60705

H-23
67059

50739 47653 55746 46650 56701
56040 71333 72487 63229 76203

77876 102699

110339

77853

73815

54673

68049

77854

73817

59927

54870

55170 46652 72963 73539
74066 48590 77883

53472

77885

77882

60000 77868

45751

88464

Repair Tiles

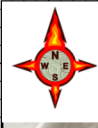
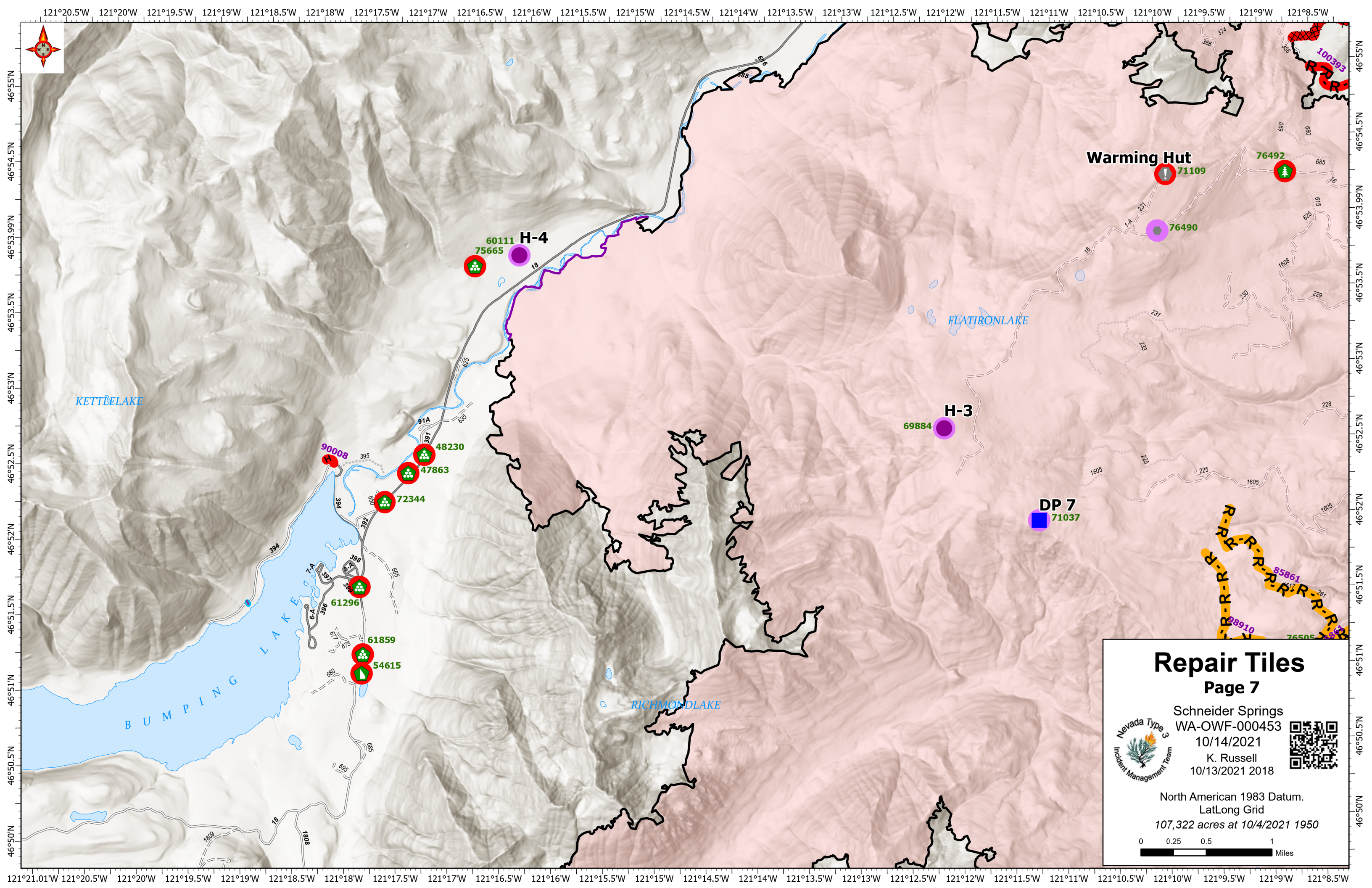
Page 6

Nevada Type 3
Incident Management Team

Schneider Springs
WA-OWF-000453
10/14/2021
K. Russell
10/13/2021 2018

North American 1983 Datum.
LatLong Grid
107,322 acres at 10/4/2021 1950

0 0.25 0.5 1 Miles



Repair Tiles

Page 7



Schneider Springs
WA-OWF-000453
10/14/2021
K. Russell
10/13/2021 2018



North American 1983 Datum.
LatLong Grid
107,322 acres at 10/4/2021 1950

