



Repair Tiles

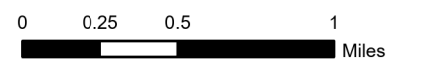
Page 1

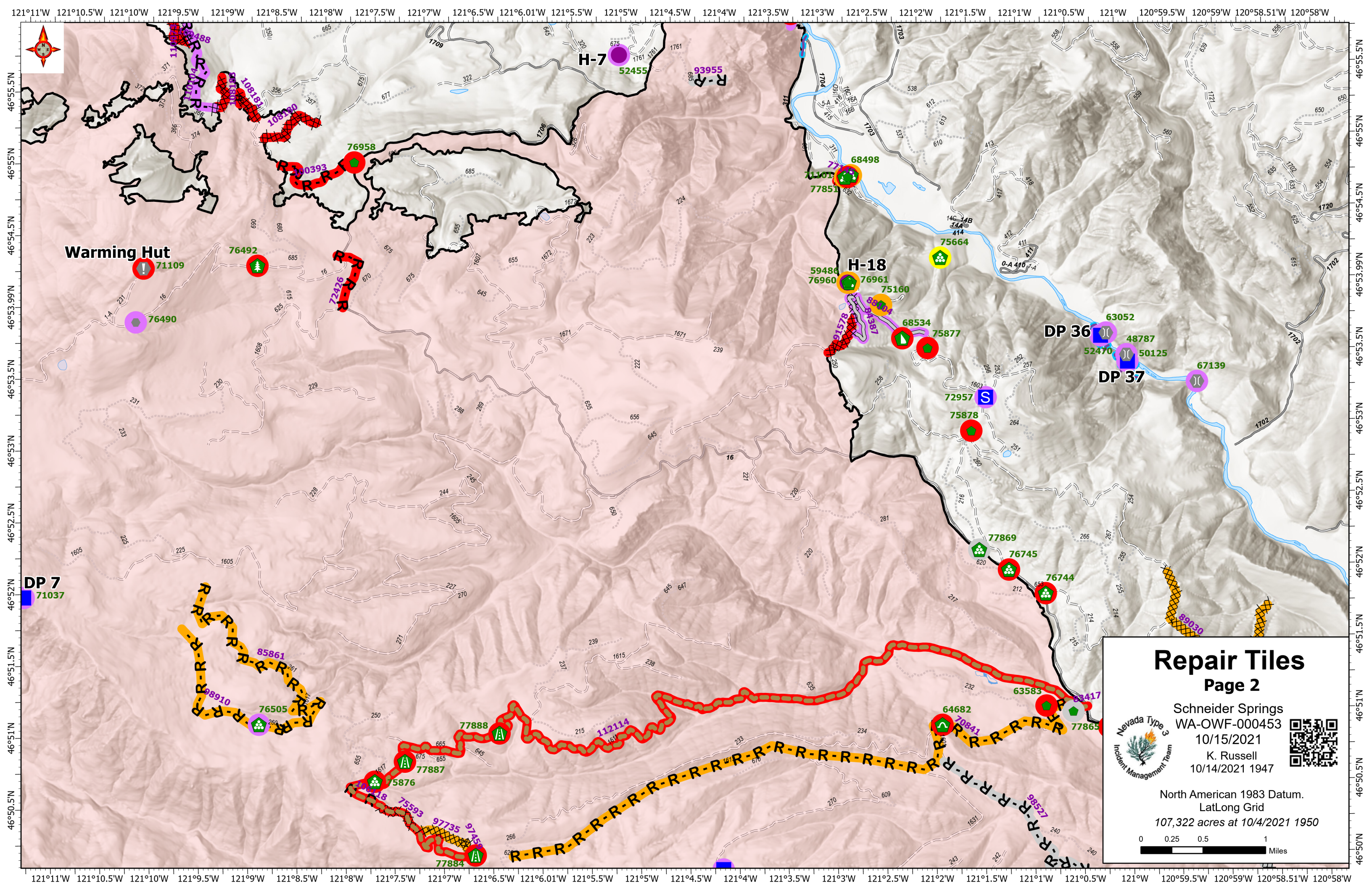
 Nevada Type 3
Incident Management Team

Schneider Springs
WA-OWF-000453
10/15/2021
K. Russell
10/14/2021 1947



North American 1983 Datum.
LatLong Grid
107,322 acres at 10/4/2021 1950





Warming Hut

DP 7
71037

H-7

H-18

DP 36

DP 37

Repair Tiles

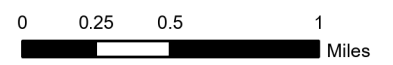
Page 2

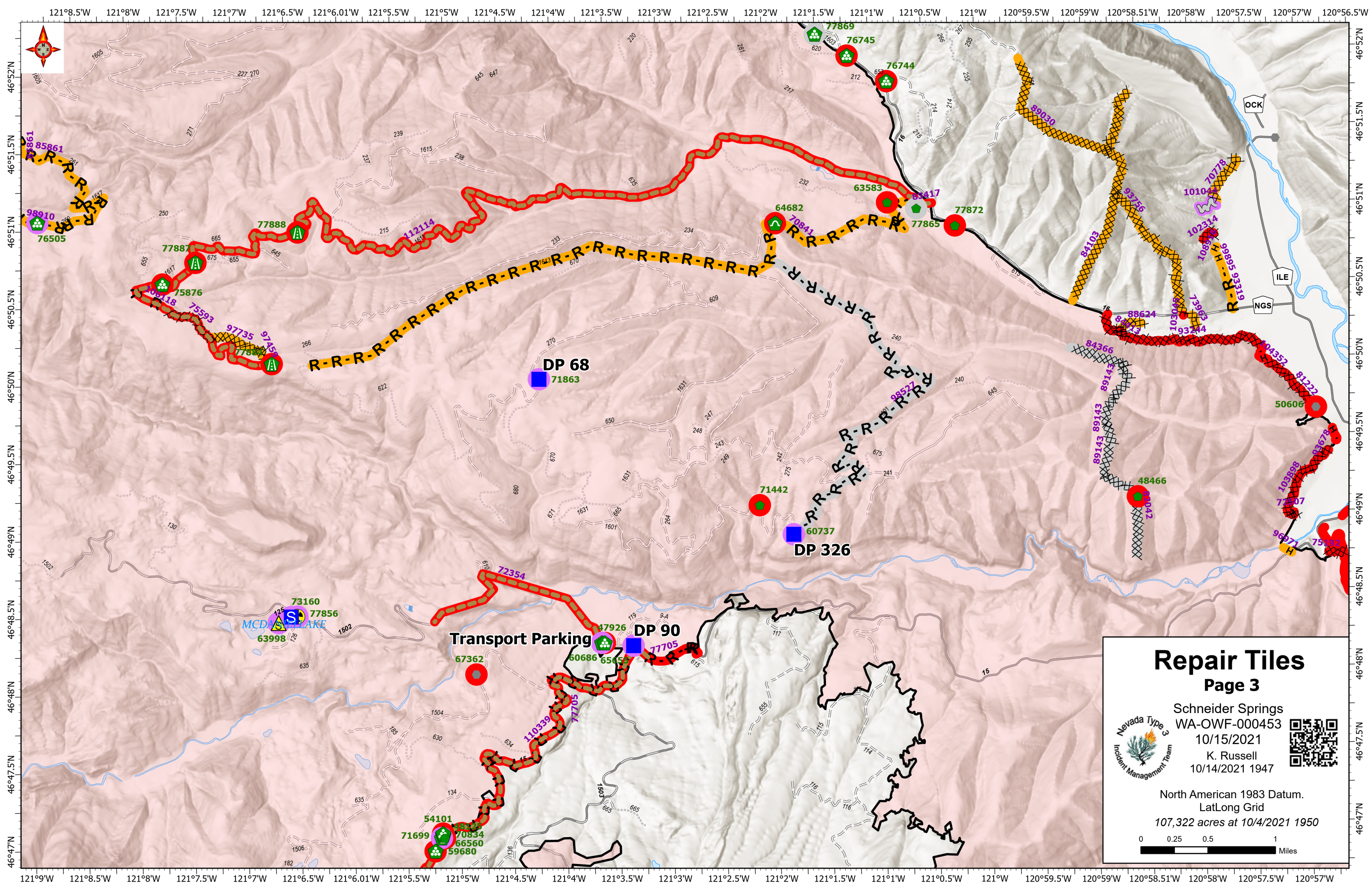


Schneider Springs
WA-OWF-000453
10/15/2021
K. Russell
10/14/2021 1947



North American 1983 Datum.
LatLong Grid
107,322 acres at 10/4/2021 1950





Repair Tiles

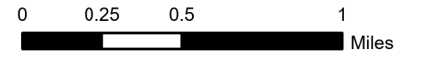
Page 3

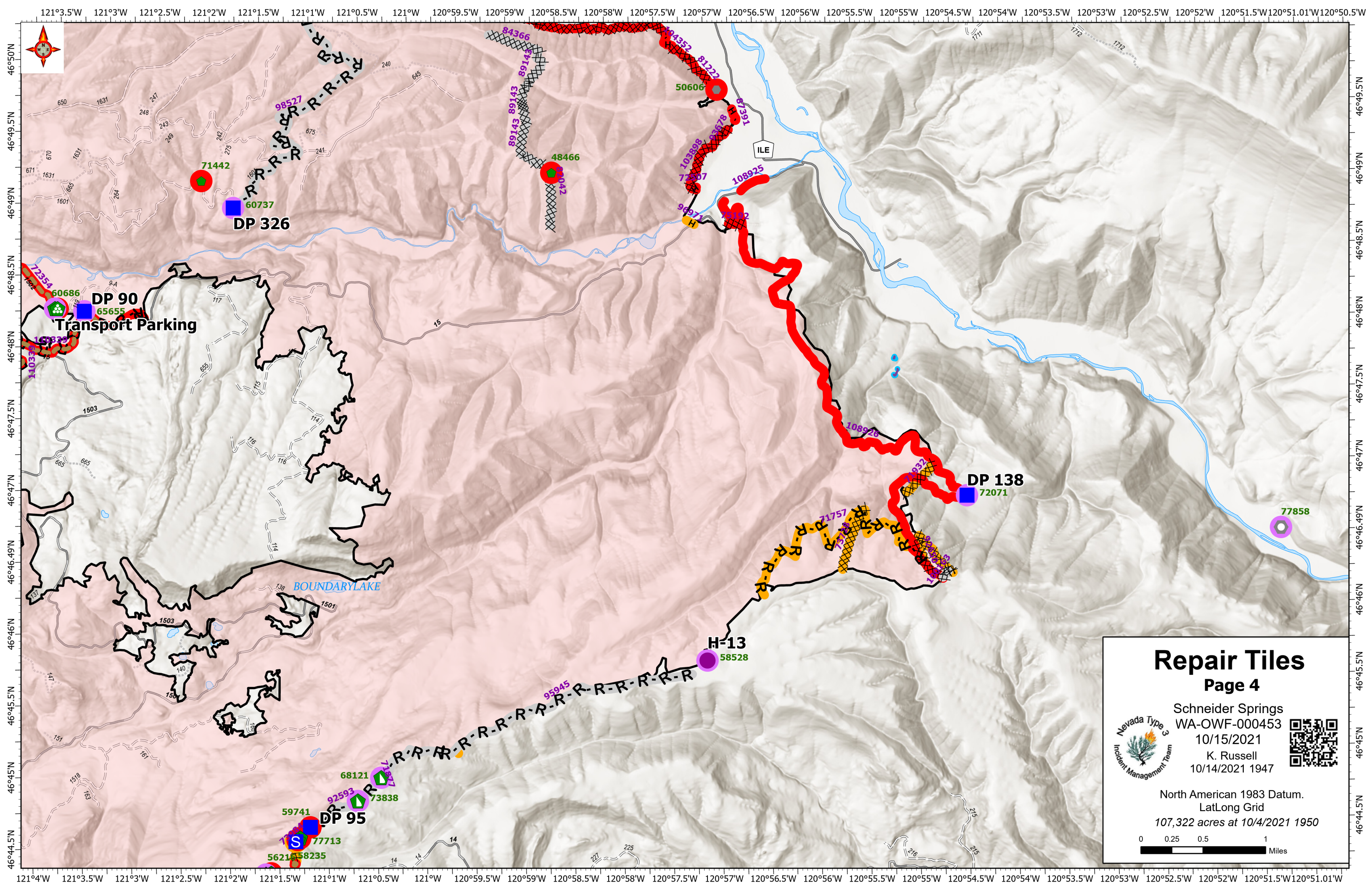


Schneider Springs
WA-OWF-000453
10/15/2021
K. Russell
10/14/2021 1947




North American 1983 Datum.
LatLong Grid
107,322 acres at 10/4/2021 1950






Repair Tiles

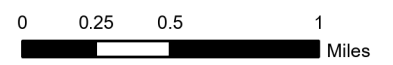
Page 4

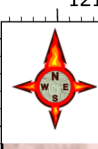
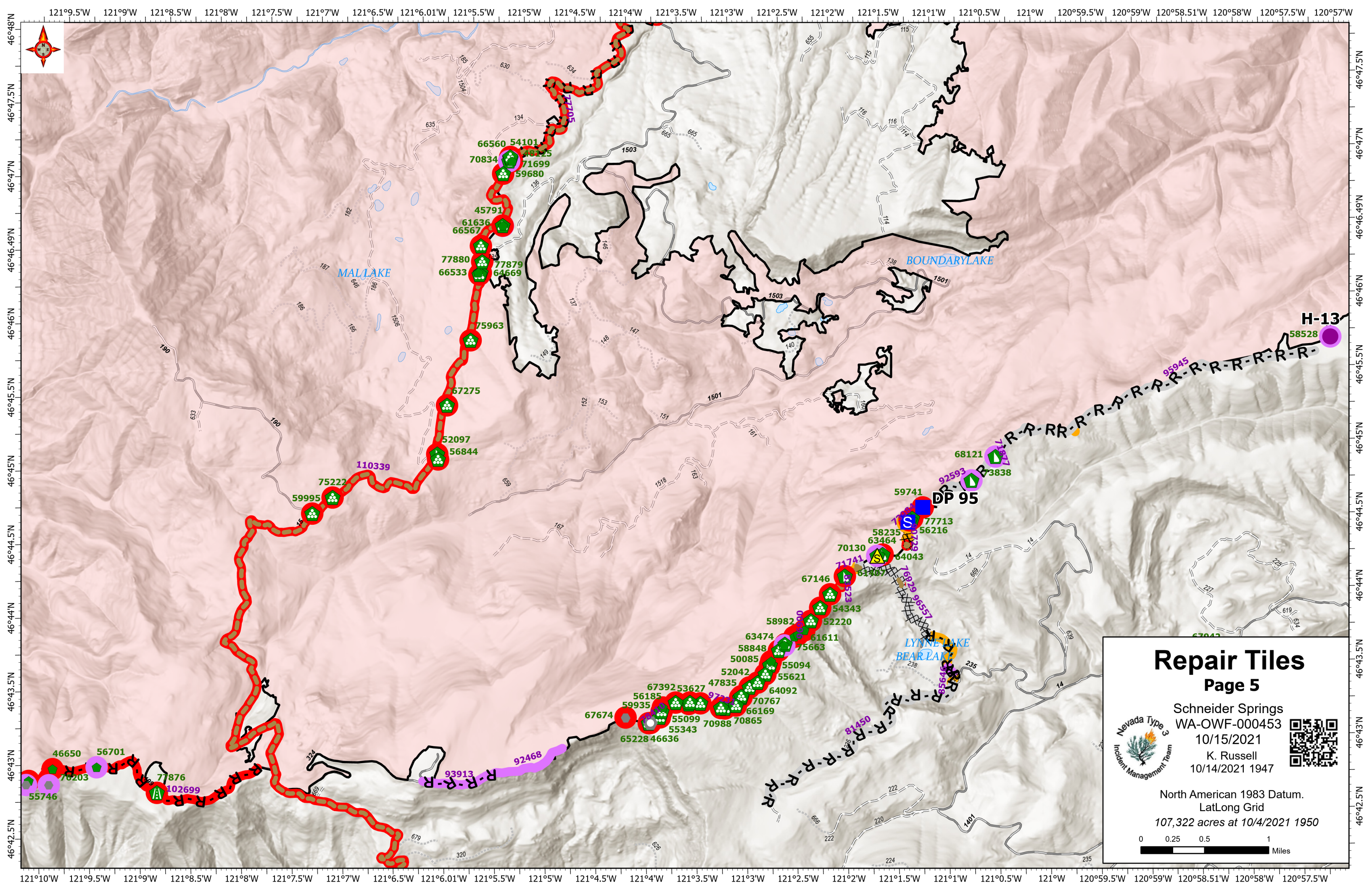


Schneider Springs
WA-OWF-000453
10/15/2021
K. Russell
10/14/2021 1947



North American 1983 Datum.
LatLong Grid
107,322 acres at 10/4/2021 1950





Repair Tiles

Page 5



Nevada Type 3
Incident Management Team

Schneider Springs
WA-OWF-000453
10/15/2021
K. Russell
10/14/2021 1947



North American 1983 Datum.
LatLong Grid
107,322 acres at 10/4/2021 1950



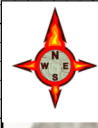
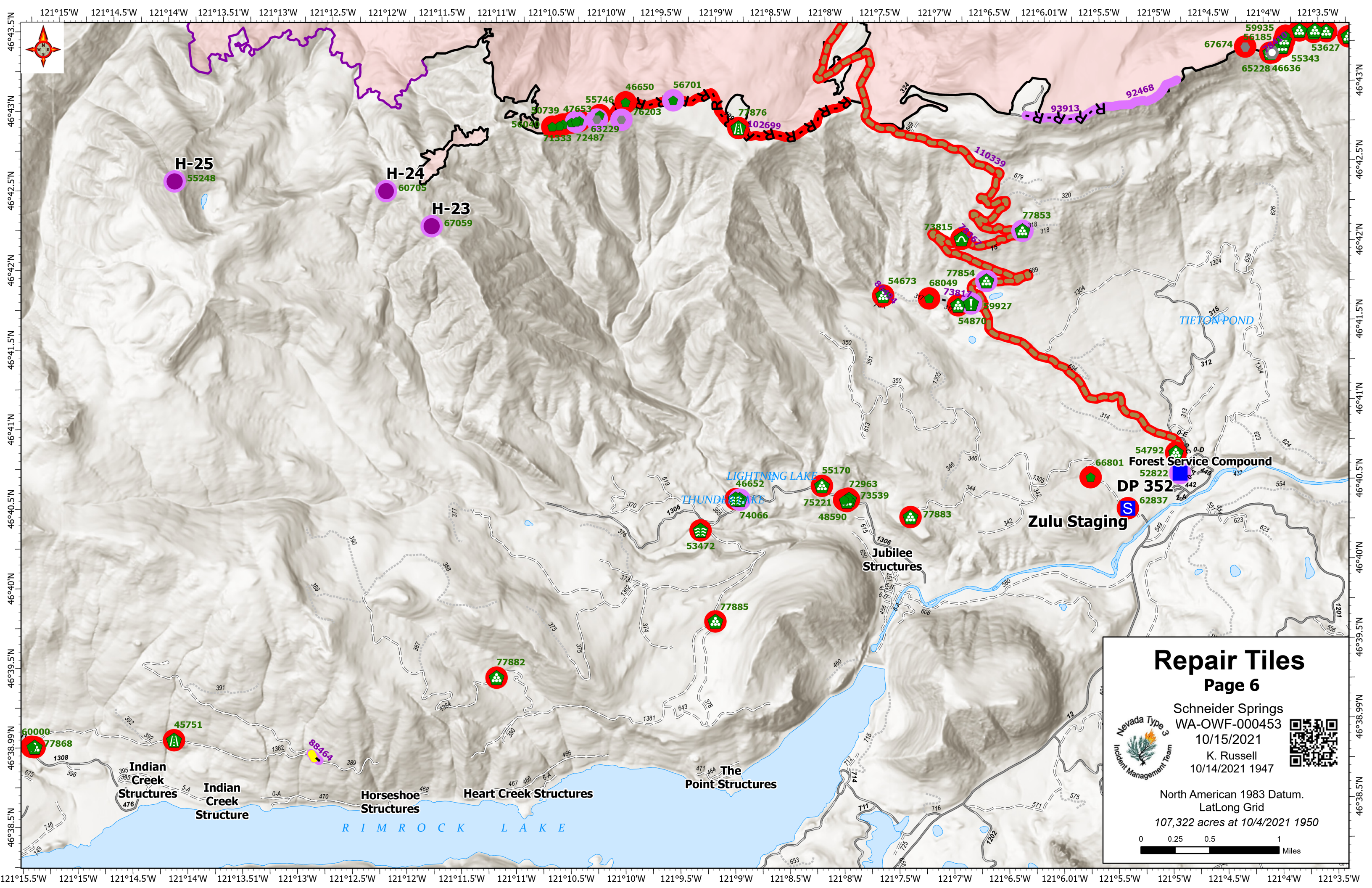
0 0.25 0.5 1 Miles

Map coordinates: 121°9.5'W to 120°57.5'W (Longitude) and 46°42.5'N to 46°48'N (Latitude).

Key locations: MALL LAKE, BOUNDARY LAKE, LYNN LAKE, BEAR LAKE.

Key points and symbols:

- DP 95 (Duck Pond 95)
- H-13 (Hazardous material site)
- Various numbered points (e.g., 66560, 54101, 70834, 71699, 59680, 45791, 61636, 66567, 77880, 66533, 77879, 64669, 75963, 67275, 52097, 56844, 110339, 75222, 59995, 59741, 77713, 56216, 58235, 63464, 70130, 61907, 64043, 67146, 54343, 52220, 58982, 61611, 55621, 63474, 58848, 50085, 52042, 55094, 47835, 64092, 56185, 70767, 59935, 55099, 66169, 55343, 70988, 70865, 67674, 65228, 46636, 67392, 53627, 92468, 93913, 95150, 95945, 58528, 68121, 92593, 73838, 55746, 46650, 56701, 76203, 77876, 102699).
- Various symbols: green circles with white dots, red circles with white dots, purple circles, blue circles, yellow triangles, and black squares.



Repair Tiles

Page 6



Schneider Springs
WA-OWF-000453
10/15/2021
K. Russell
10/14/2021 1947



North American 1983 Datum.
LatLong Grid
107,322 acres at 10/4/2021 1950



Miles

H-25
55248

H-24
60705

H-23
67059

50739 47653 55746 46650 56701
56040 71333 72487 63229 76203

77876 102699

67674 59935 56185 53627
65228 46636 55343

73815

77853

54673

68049 77854

73817 73817

59927 54870

55170

46652 72963

75221 73539

53472 48590

77883

Zulu Staging

54792 Forest Service Compound
66801
52822
62837 DP 352

Jubilee Structures

77885

77882

60000 77868

45751

88464

Indian Creek Structures

Indian Creek Structure

Horseshoe Structures

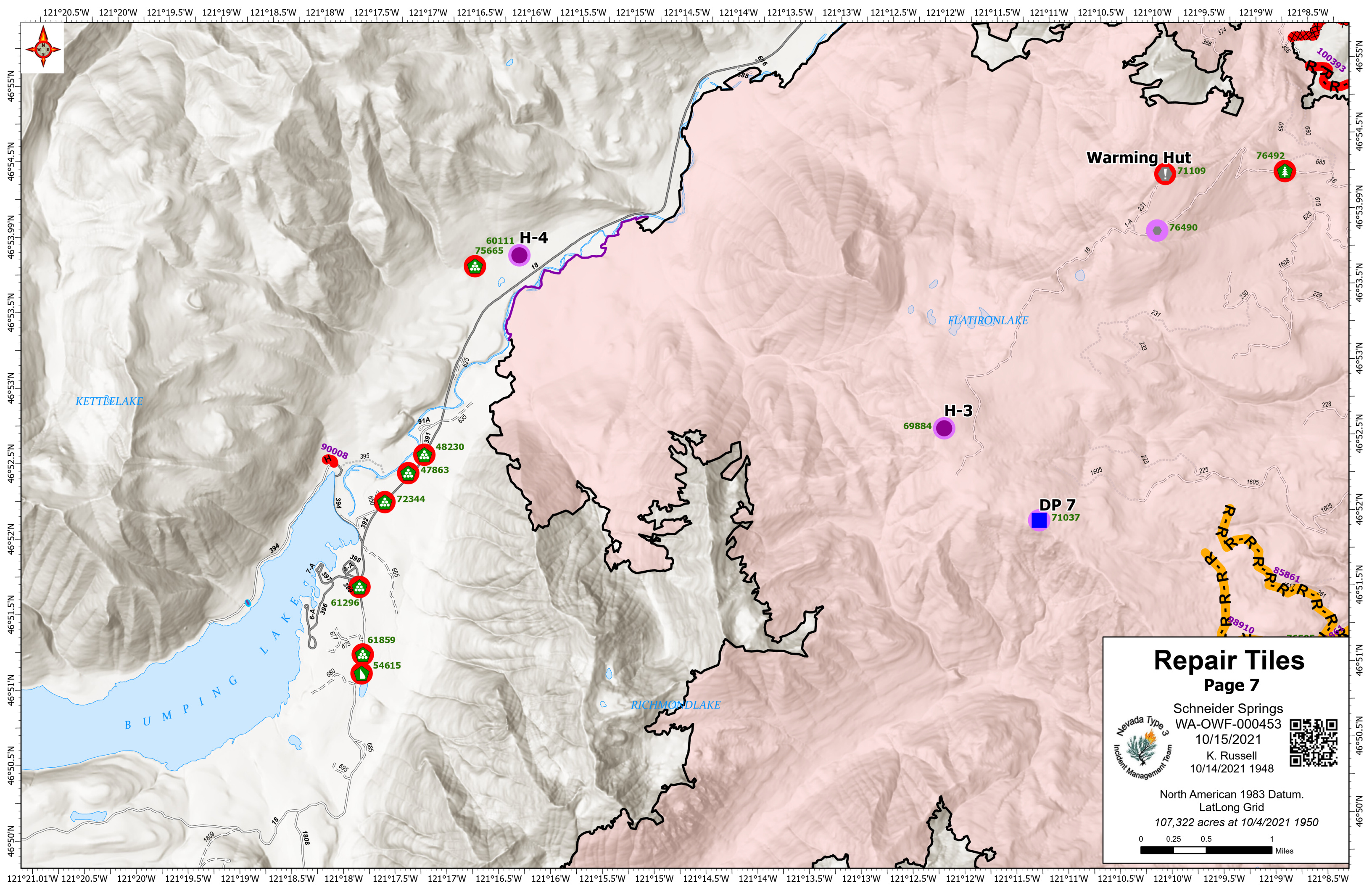
Heart Creek Structures

The Point Structures

RIMROCK LAKE

LIGHTNING LAKE
THUNDER LAKE

TETON POND



Repair Tiles

Page 7



Schneider Springs
 WA-OWF-000453
 10/15/2021
 K. Russell
 10/14/2021 1948



North American 1983 Datum.
 LatLong Grid
 107,322 acres at 10/4/2021 1950

0 0.25 0.5 1
 Miles



