

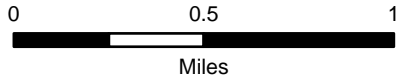
Forest Closure

Schneider Springs
WA-OWF-000453

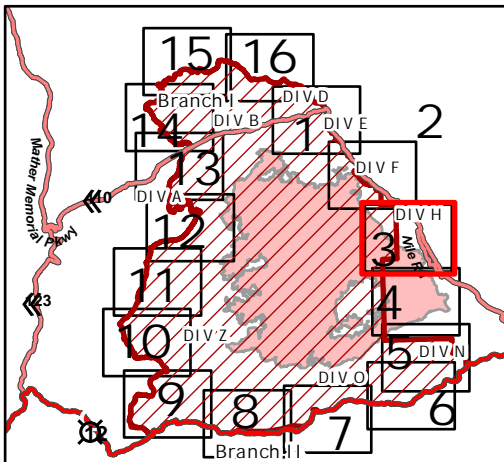
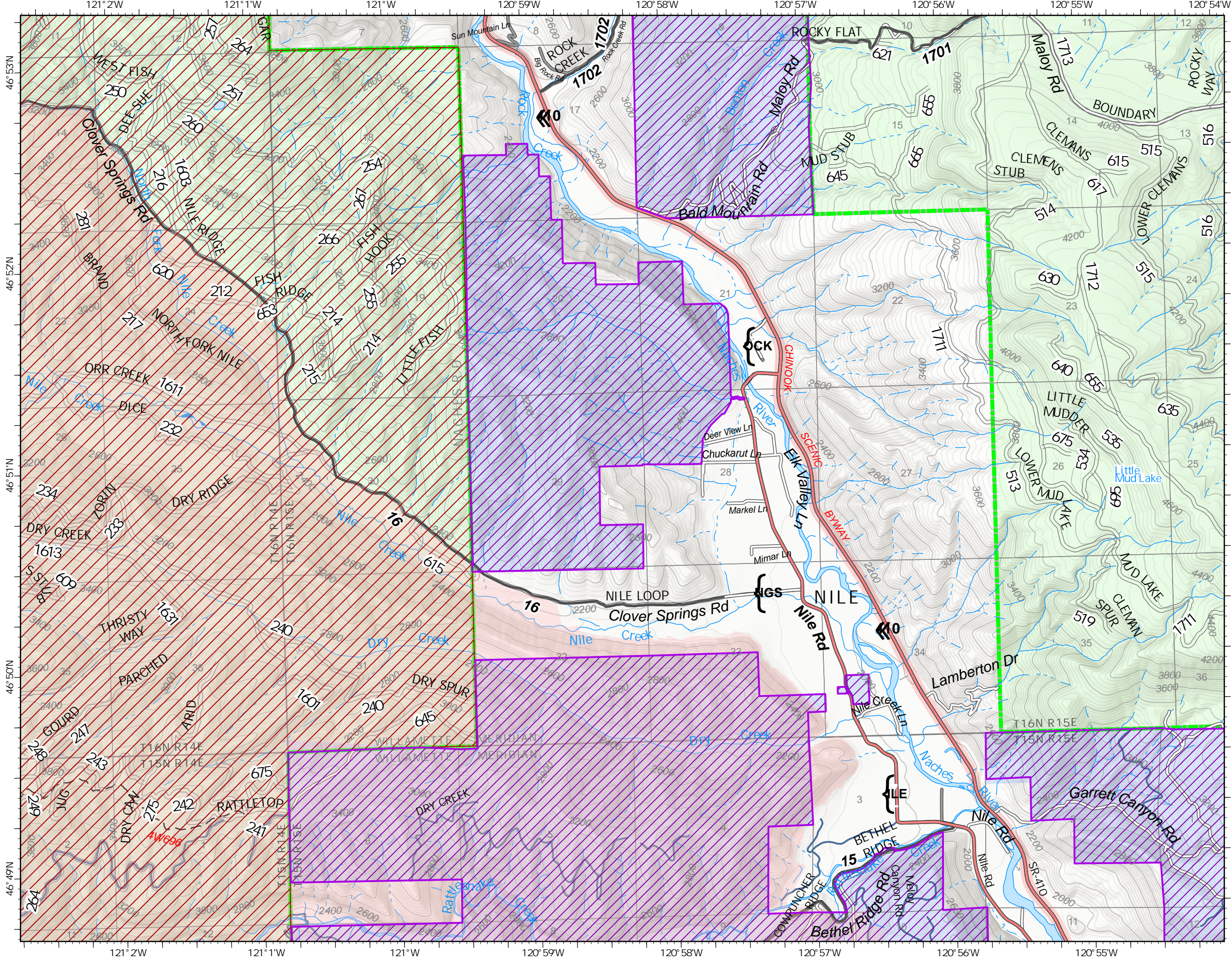
9/9/21

97,288 acres at 9/7/21 2315

Page 3



- FS - Suitable for Passenger Car
- FS - High Clearance/Closed
- Secondary Highway
- Paved Roads
- Dirt (Not Paved)
- Paved Road
- Gravel Road
- Dirt Roads
- Unimproved Roads
- Closed Roads
- State or PVT
- Administrative FS Boundary
- Wildfire Daily Fire Perimeter
- State Closure Area



9/8/2021 2333
Acres from IR
North American 1983 Datum.
Lat/Long Grid

