

# IAP Map

Schneider Springs  
WA-OWF-000453

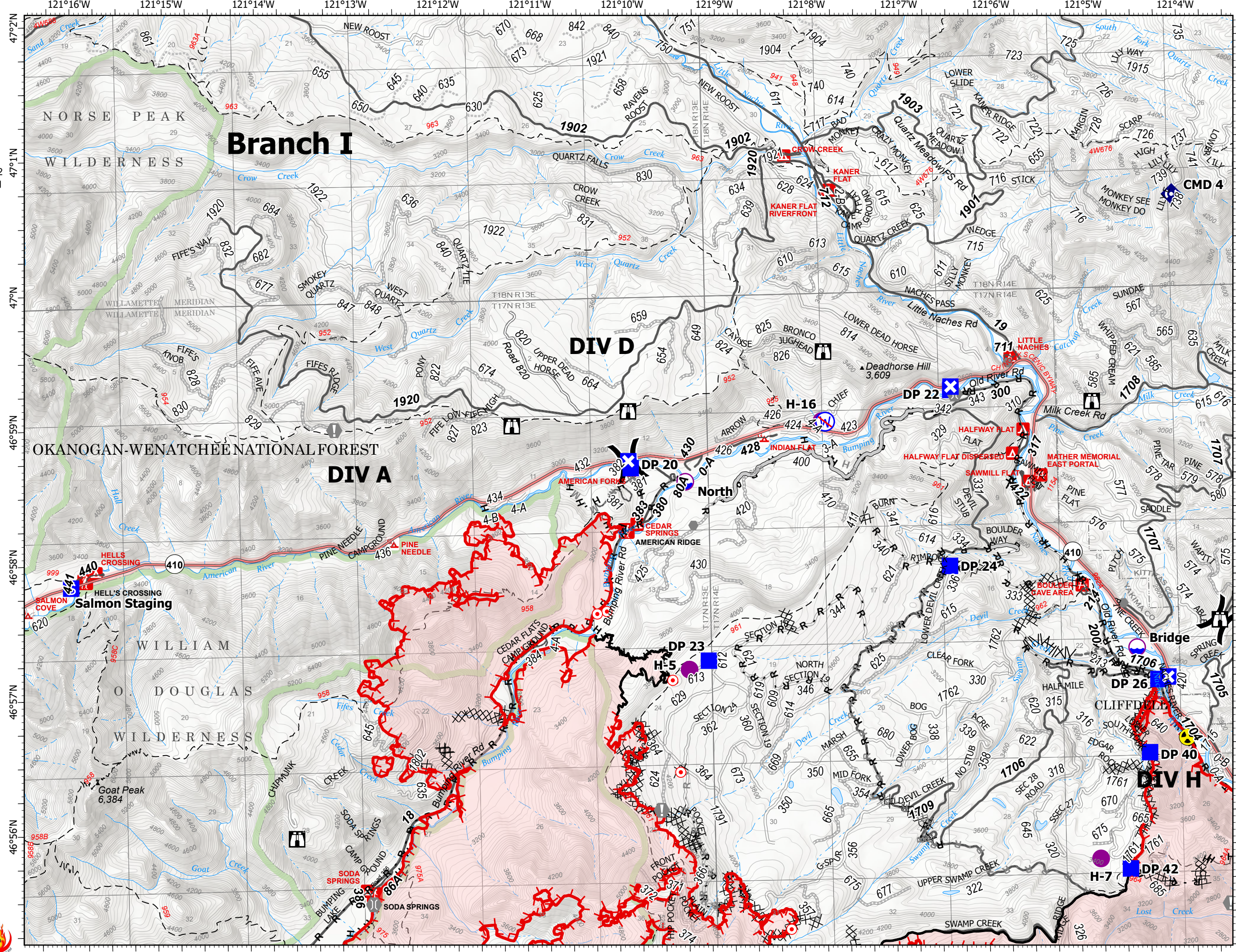
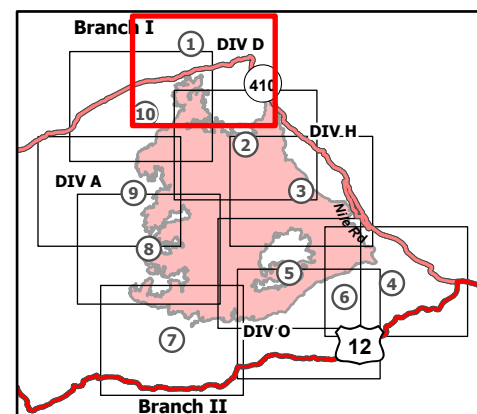
9/25/2021

105,682 acres at 9/23/2021 2130

Page 1 of 10



- Dip Site
- Helispot
- Division Break
- Drop Point
- Closure
- Staging Area
- Lookout
- Hot Spot - Spot Fire
- Value at Risk
- Other
- Bridge
- Repeater
- Hazard
- Restricted Water Source
- Completed Dozer Line
- Completed Fuel Break
- Completed Hand Line
- Completed Road as Line
- Planned Dozer Line
- Planned Hand Line
- Planned Mixed Construction Line
- Planned Road as Line
- Access or Improved Road
- Other
- Fire Edge
- Contained Line
- Administrative FS Boundary
- FS Wilderness Boundary
- Wildfire Daily Fire Perimeter



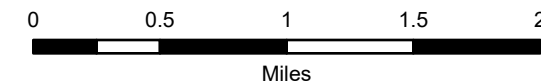
# IAP Map

Schneider Springs  
WA-OWF-000453

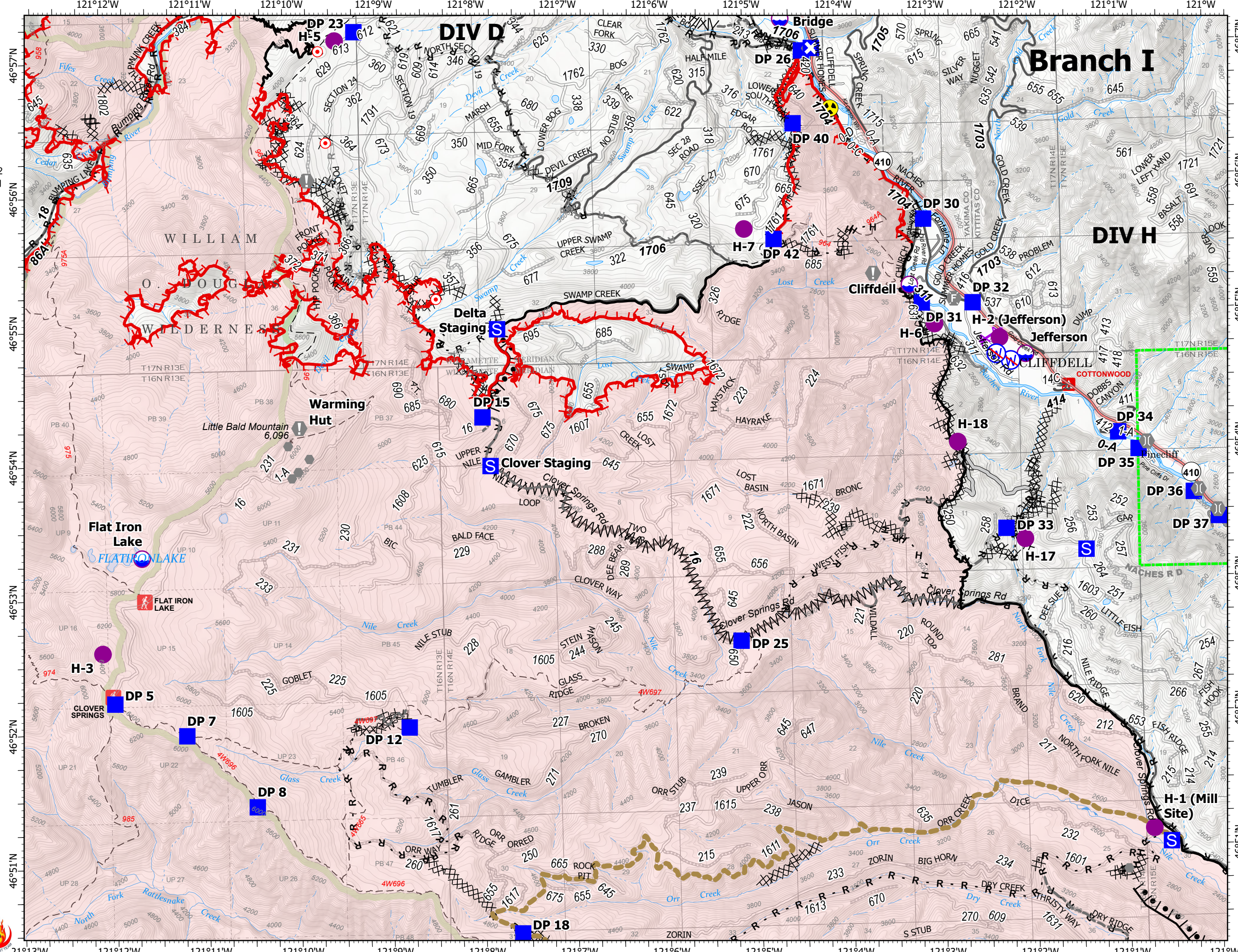
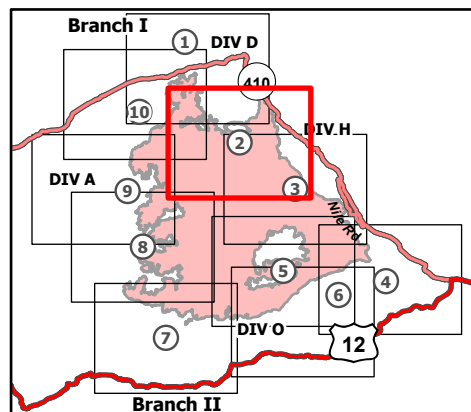
9/25/2021

105,682 acres at 9/23/2021 2130

Page 2 of 10



- Dip Site
- Helispot
- Division Break
- Drop Point
- Closure
- Staging Area
- Lookout
- Hot Spot - Spot Fire
- Value at Risk
- Other
- Fire Station
- Bridge
- Hazard
- Restricted Water Source
- Completed Burnout
- Completed Dozer Line
- Completed Fuel Break
- Completed Hand Line
- Completed Road as Line
- Planned Dozer Line
- Planned Hand Line
- Planned Road as Line
- Access or Improved Road
- Other
- Road Repair
- Aerial Hazard
- Fire Edge
- Contained Line
- Administrative FS Boundary
- FS Wilderness Boundary
- Wildfire Daily Fire Perimeter



# IAP Map

Schneider Springs  
WA-OWF-000453

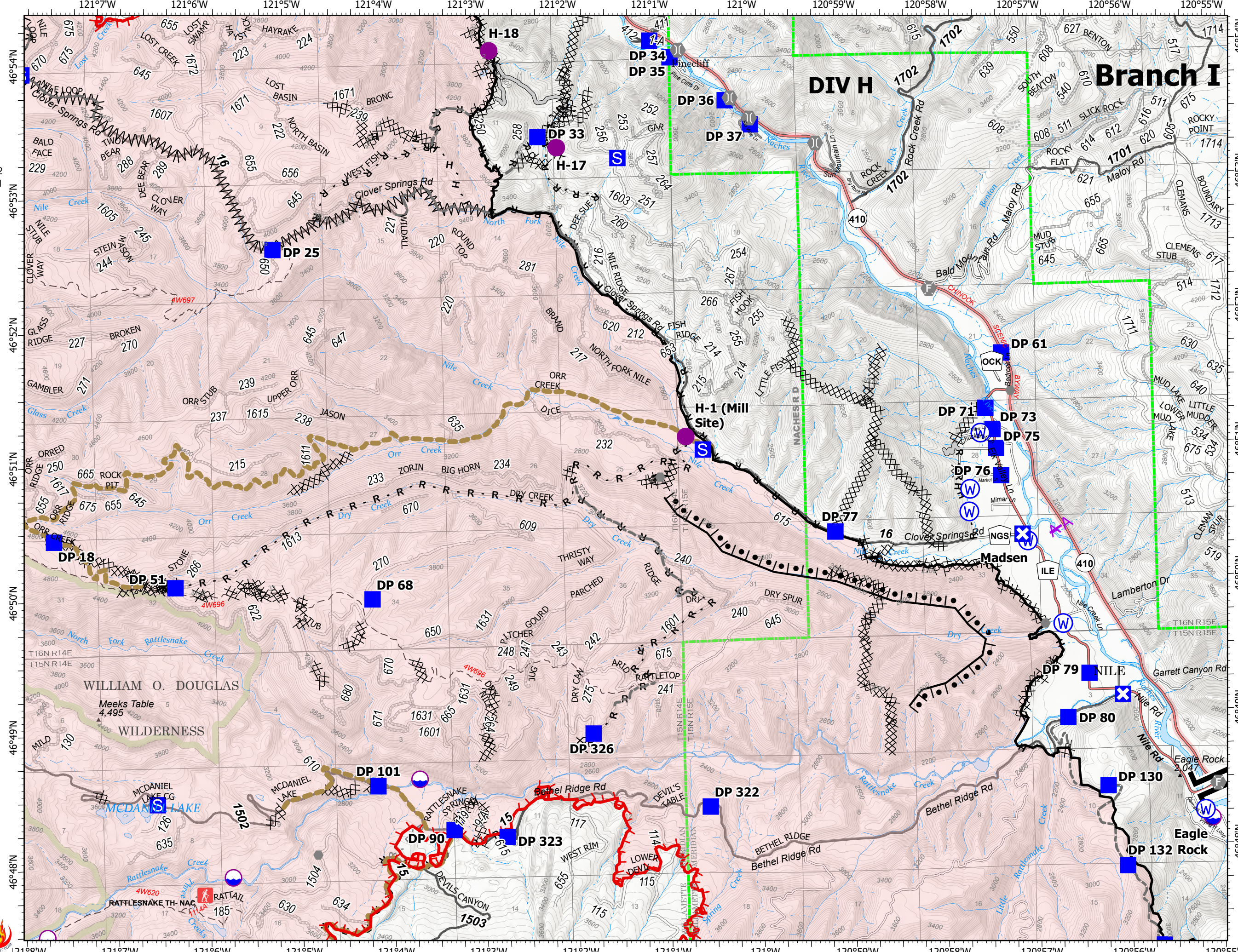
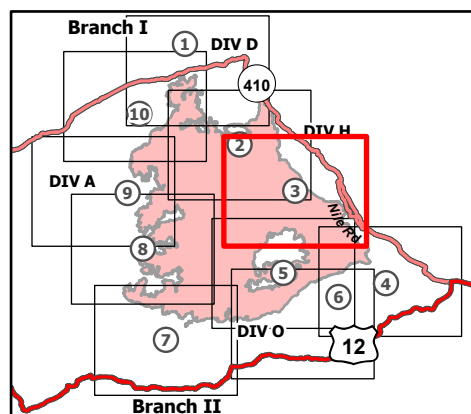
9/25/2021

105,682 acres at 9/23/2021 2130

Page 3 of 10



- Dip Site
- Helispot
- Branch Break
- Drop Point
- Closure
- Staging Area
- Other
- Fire Station
- Bridge
- Water Source
- Completed Burnout
- Completed Dozer Line
- Completed Fuel Break
- Completed Hand Line
- Completed Road as Line
- Planned Road as Line
- Access or Improved Road
- Other
- Road Repair
- Aerial Hazard
- Fire Edge
- Contained Line
- Administrative FS Boundary
- FS Wilderness Boundary
- Wildfire Daily Fire Perimeter



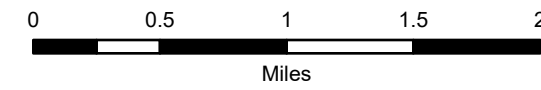
# IAP Map

Schneider Springs  
WA-OWF-000453

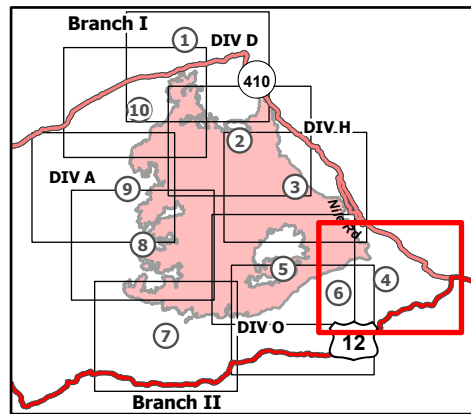
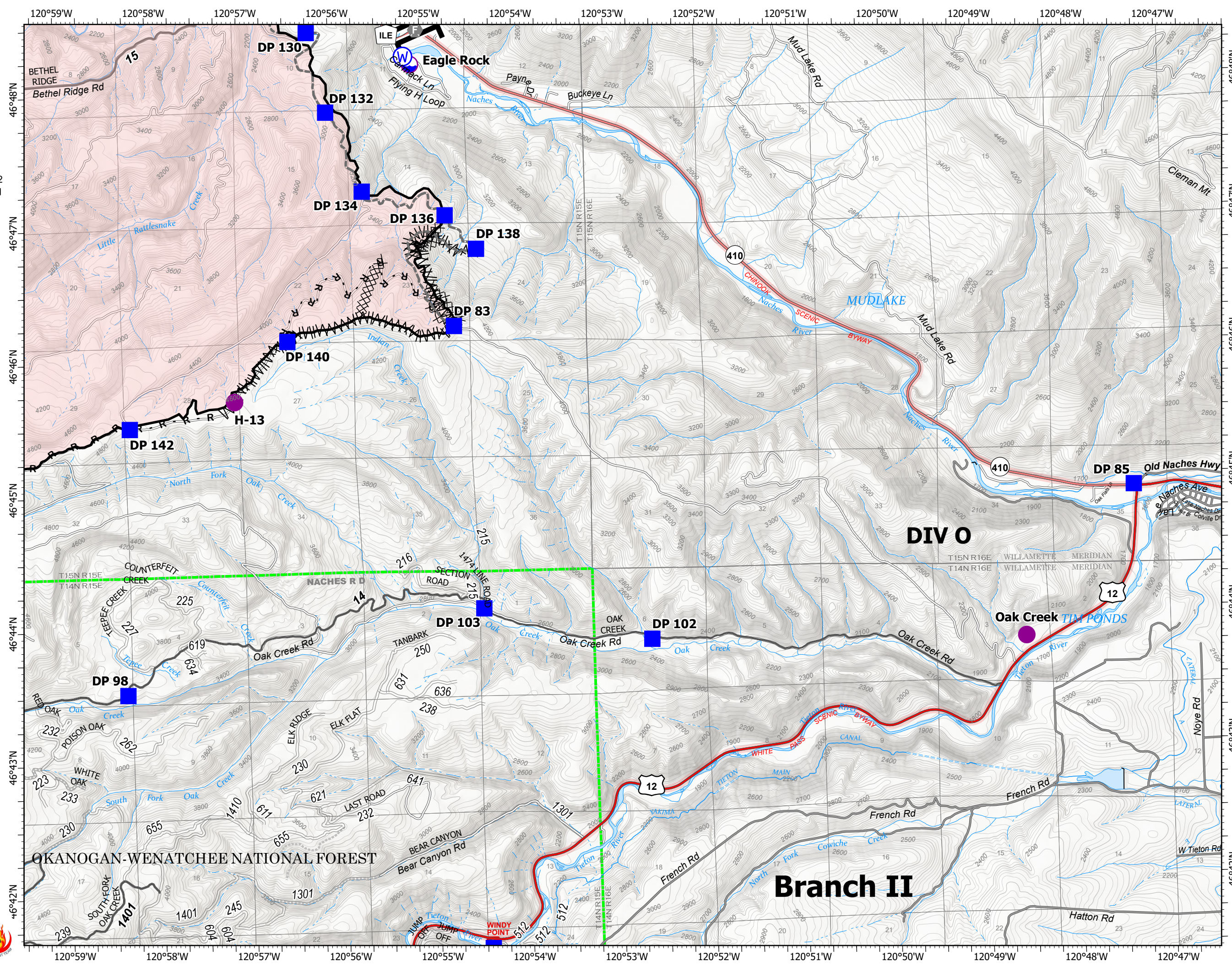
9/25/2021

105,682 acres at 9/23/2021 2130

Page 4 of 10



- Dip Site
- Helispot
- Branch Break
- Drop Point
- Fire Station
- Water Source
- Completed Dozer Line
- Completed Fuel Break
- Completed Road as Line
- Other
- Contained Line
- Administrative FS Boundary
- Wildfire Daily Fire Perimeter



# IAP Map

Schneider Springs  
WA-OWF-000453

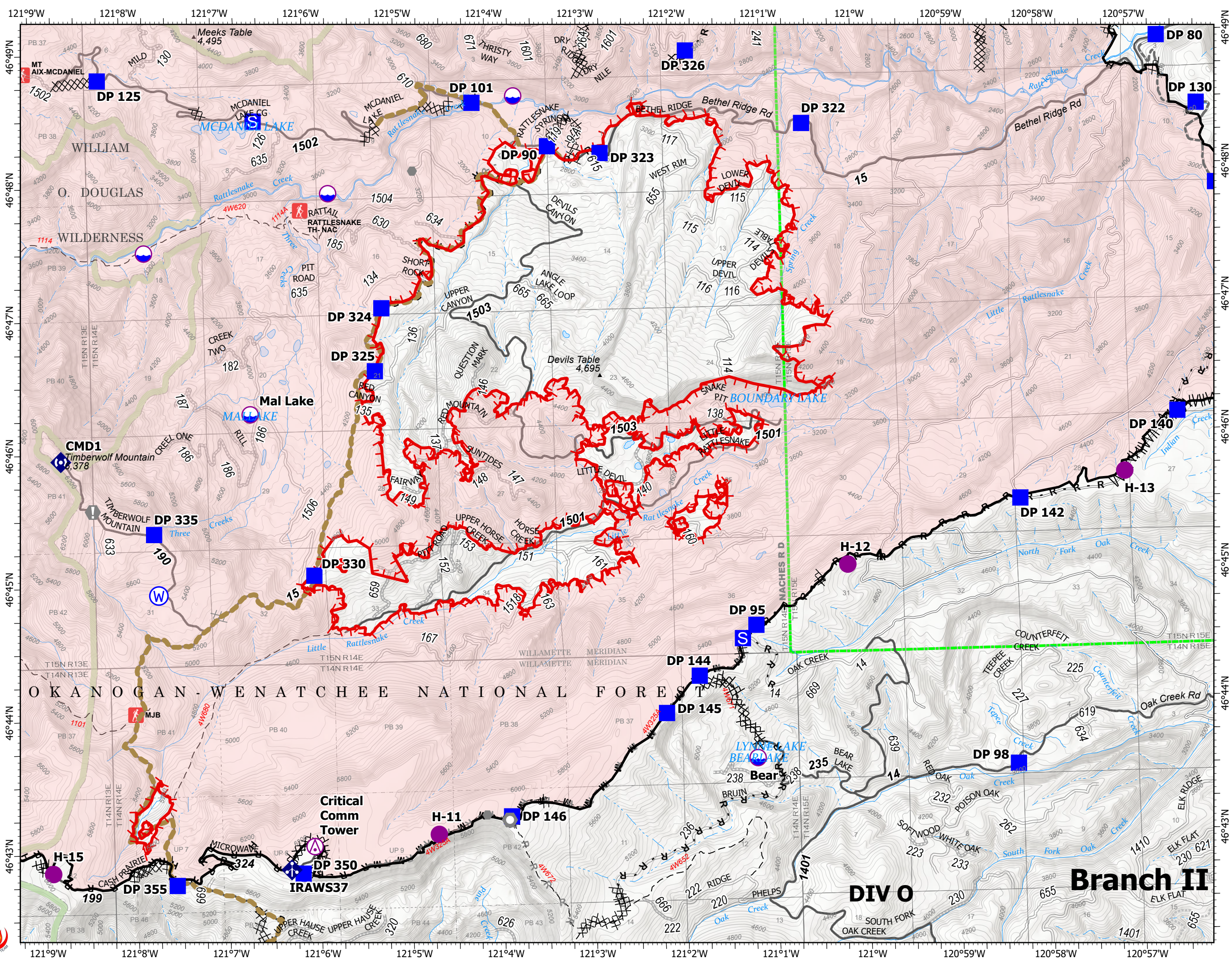
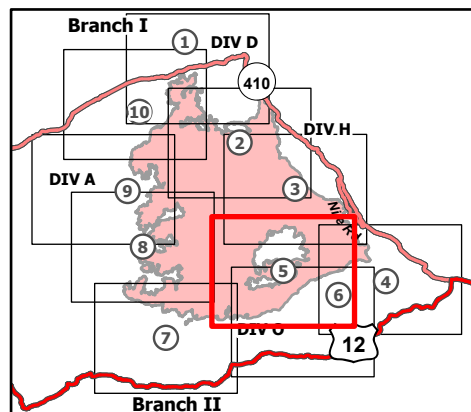
9/25/2021

105,682 acres at 9/23/2021 2130

Page 5 of 10



- ⊙ Aerial Hazard
- ⊙ Dip Site
- ⊙ Helispot
- ⊙ Drop Point
- ⊙ Closure
- ⊙ Staging Area
- ⊙ Value at Risk
- ⊙ Other
- ⊙ Landmark
- ⊙ Mobile Weather Unit
- ⊙ Repeater
- ⊙ Water Source
- ⊙ Completed Burnout
- ⊙ Completed Dozer Line
- ⊙ Completed Fuel Break
- ⊙ Completed Hand Line
- ⊙ Completed Mixed Construction Line
- ⊙ Completed Plow Line
- ⊙ Completed Road as Line
- ⊙ Planned Dozer Line
- ⊙ Planned Road as Line
- ⊙ Other
- ⊙ Road Repair
- ⊙ Fire Edge
- ⊙ Contained Line
- ⊙ Administrative FS Boundary
- ⊙ FS Wilderness Boundary
- ⊙ Wildfire Daily Fire Perimeter



Branch II

DIV O

Critical Comm Tower

IRAWS37

OKANOGAN-WENATCHEE NATIONAL FOREST

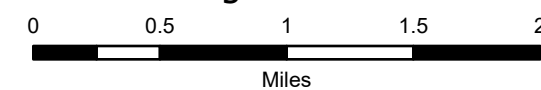
# IAP Map

Schneider Springs  
WA-OWF-000453

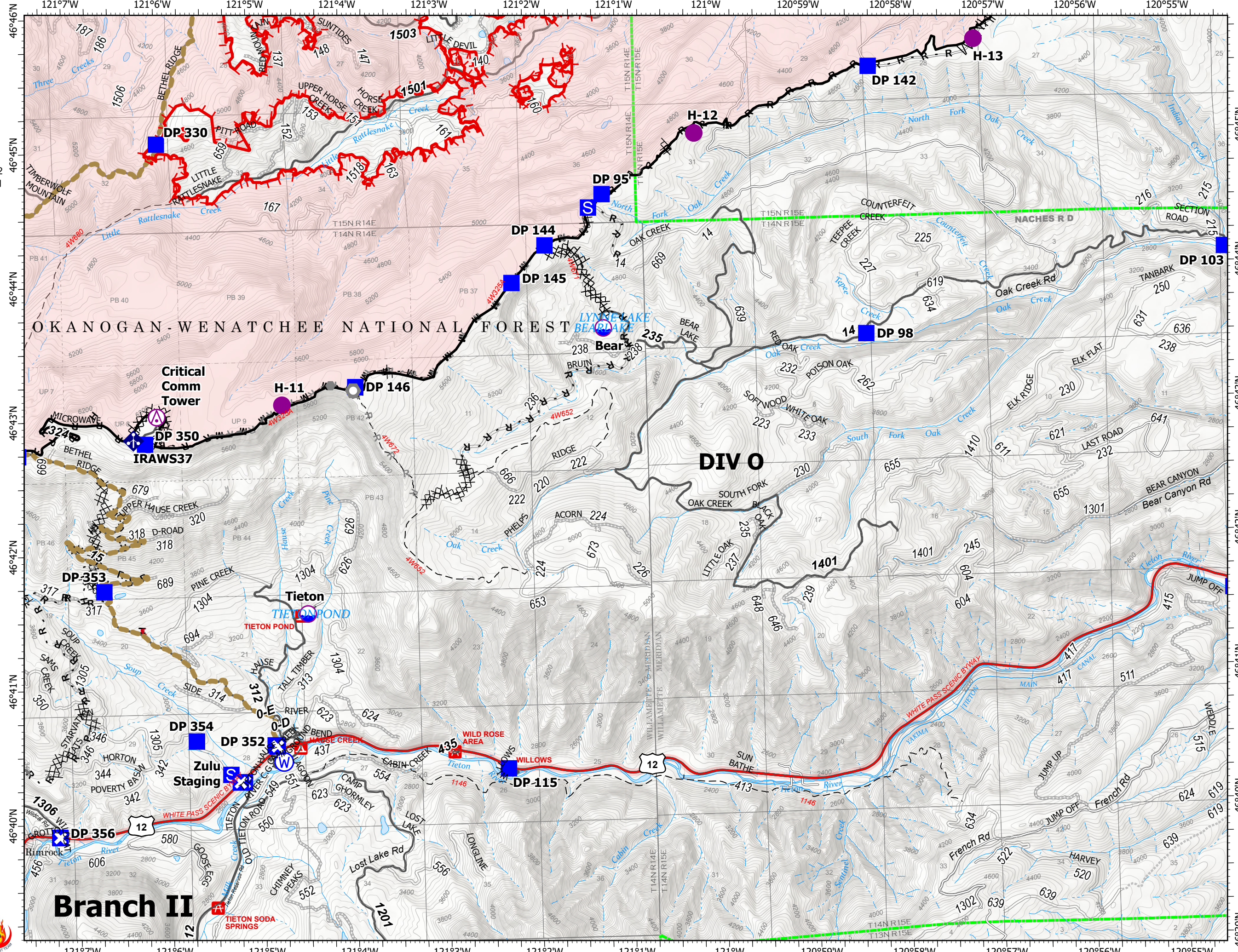
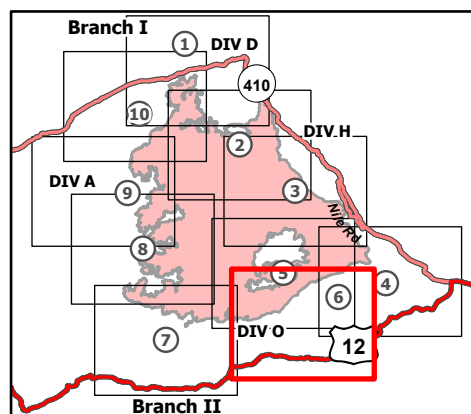
9/25/2021

105,682 acres at 9/23/2021 2130

Page 6 of 10



- ⊙ Aerial Hazard
- Dip Site
- Helispot
- Drop Point
- ⊠ Closure
- ⊠ Staging Area
- Other
- Landmark
- ⚡ Mobile Weather Unit
- ⊙ Water Source
- ⊠ Completed Dozer Line
- ⊠ Completed Fuel Break
- H Completed Hand Line
- M Completed Mixed Construction Line
- P Completed Plow Line
- R Completed Road as Line
- ⊠ Planned Dozer Line
- H Planned Hand Line
- R Planned Road as Line
- - - Fence
- - - Other
- Road Repair
- Fire Edge
- Contained Line
- Administrative FS Boundary
- Wildfire Daily Fire Perimeter



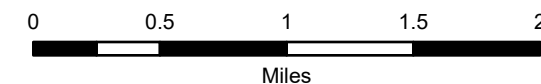
# IAP Map

Schneider Springs  
WA-OWF-000453

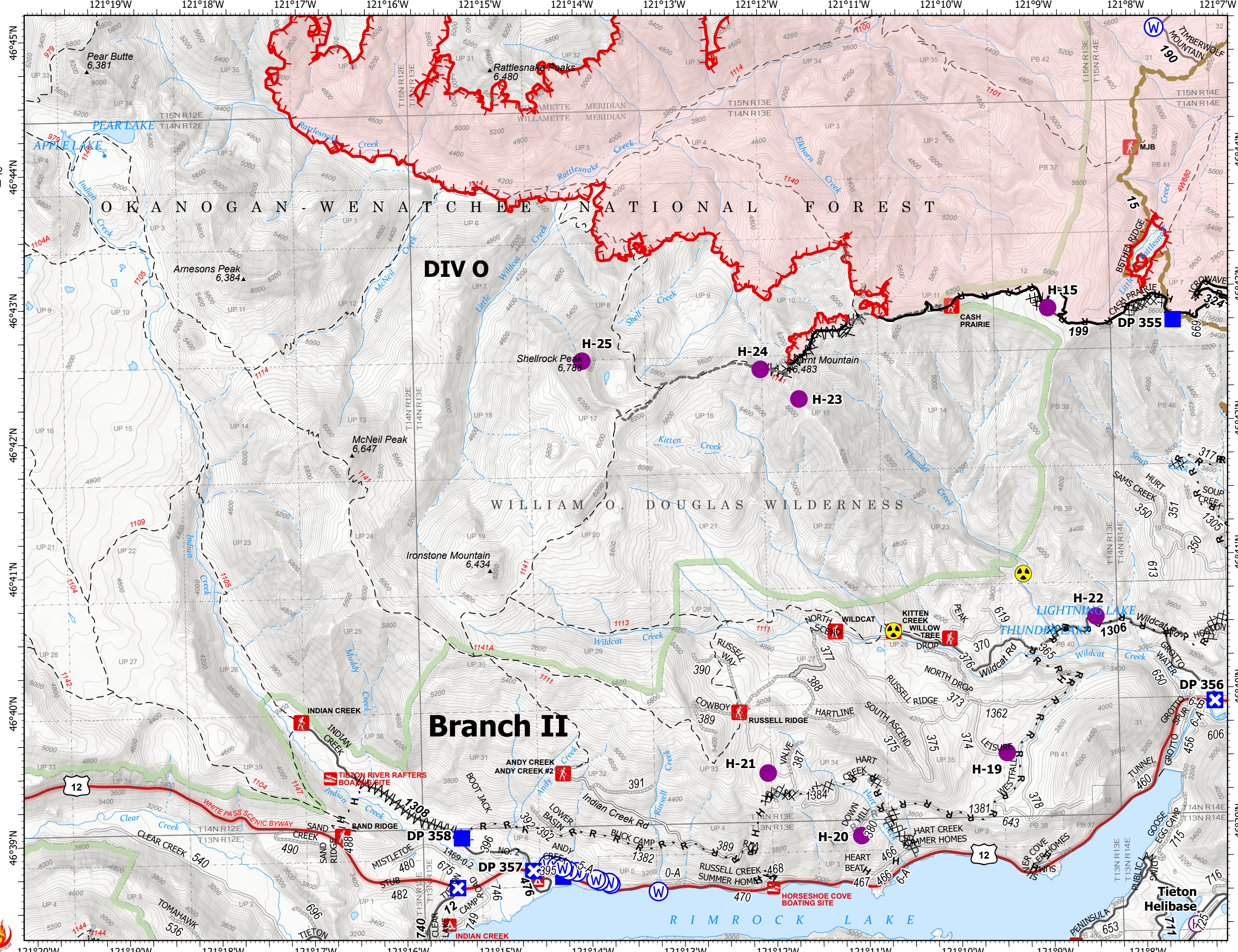
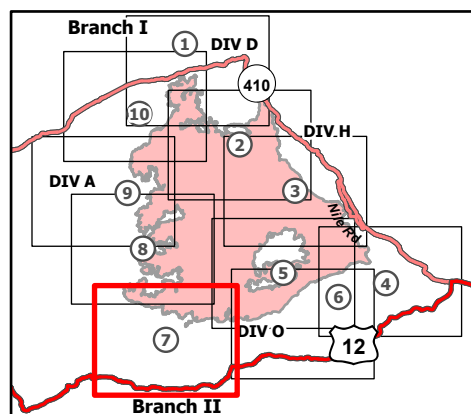
9/25/2021

105,682 acres at 9/23/2021 2130

Page 7 of 10



- Helispot
- ⊕ Helibase
- Drop Point
- ⊠ Closure
- ⚠ Hazard
- Ⓜ Water Source
- ⊗⊗ Completed Dozer Line
- ⊗⊗ Completed Fuel Break
- H - Completed Hand Line
- R - Completed Road as Line
- ⊗⊗ Planned Dozer Line
- R - Planned Road as Line
- Access or Improved Road
- - - Other
- Road Repair
- ▬ Fire Edge
- ▬ Contained Line
- ▬ Administrative FS Boundary
- ▬ FS Wilderness Boundary
- ▬ Wildfire Daily Fire Perimeter



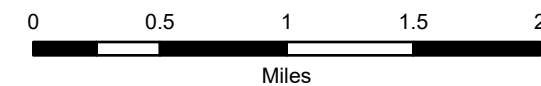
# IAP Map

Schneider Springs  
WA-OWF-000453

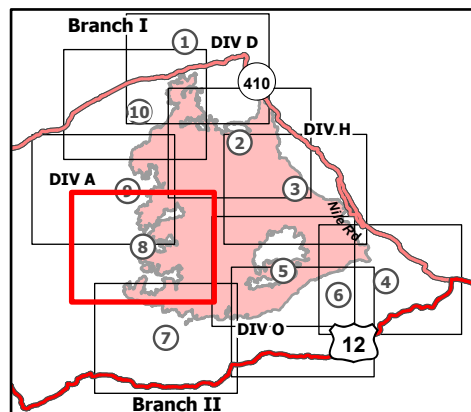
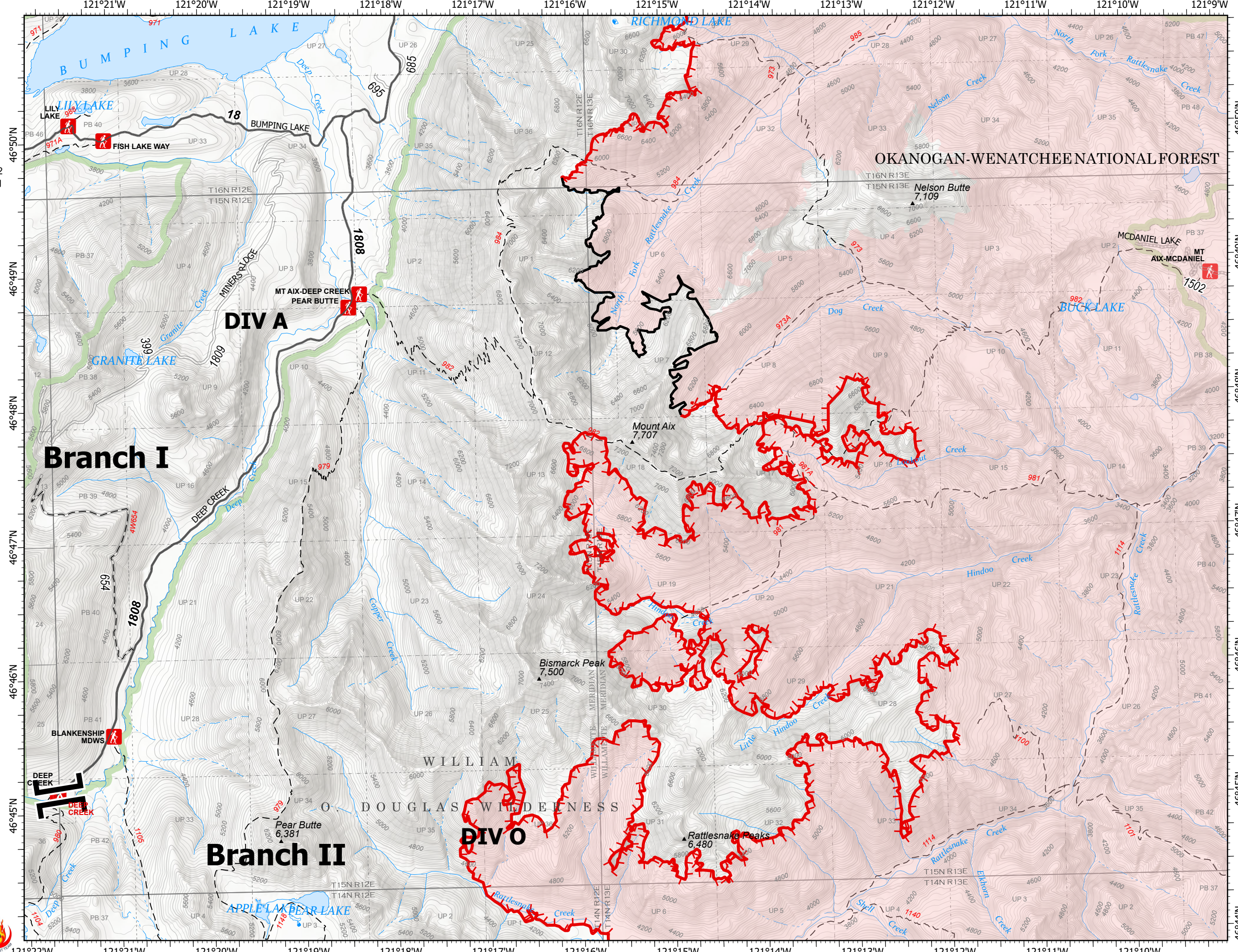
9/25/2021

105,682 acres at 9/23/2021 2130

Page 8 of 10



- Branch Break
- Repeater
- Completed Fuel Break
- Fire Edge
- Contained Line
- Administrative FS Boundary
- FS Wilderness Boundary
- Wildfire Daily Fire Perimeter





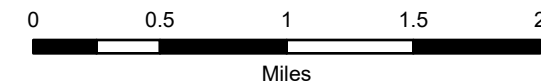
# IAP Map

Schneider Springs  
WA-OWF-000453

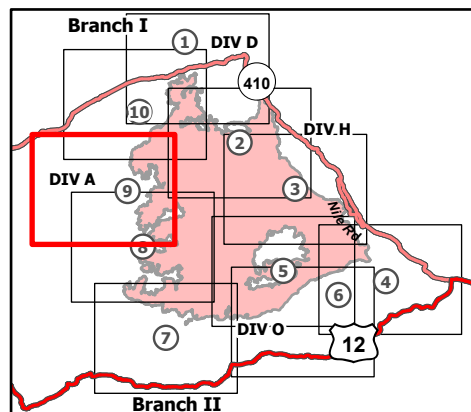
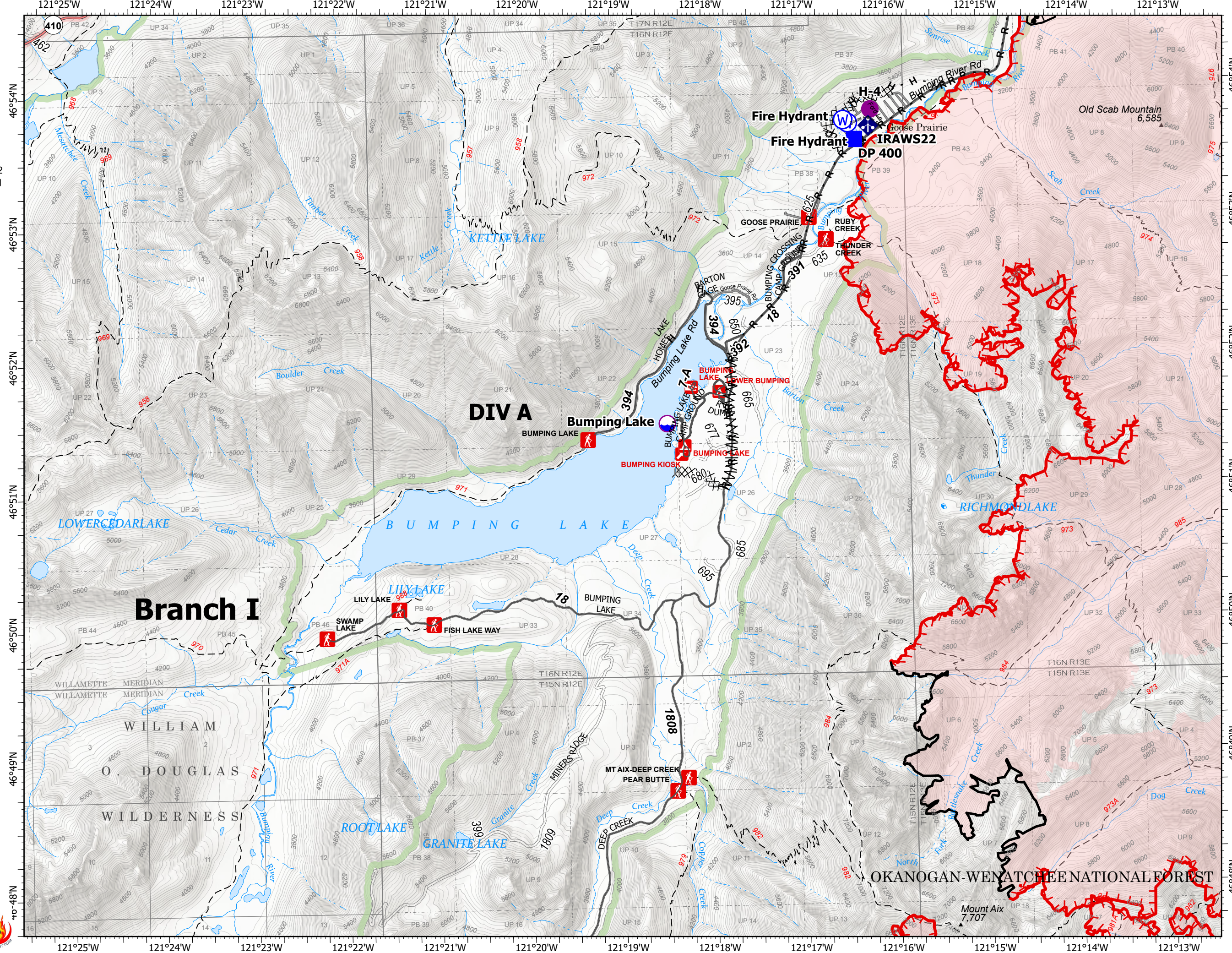
9/25/2021

105,682 acres at 9/23/2021 2130

Page 9 of 10



- Dip Site
- Helispot
- Drop Point
- Mobile Weather Unit
- Water Source
- Completed Burnout
- Completed Dozer Line
- Completed Fuel Break
- Completed Hand Line
- Completed Road as Line
- Planned Hand Line
- Fire Edge
- Contained Line
- Administrative FS Boundary
- FS Wilderness Boundary
- Wildfire Daily Fire Perimeter



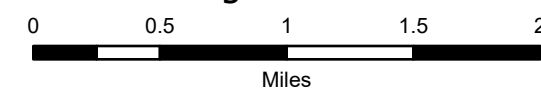
# IAP Map

Schneider Springs  
WA-OWF-000453

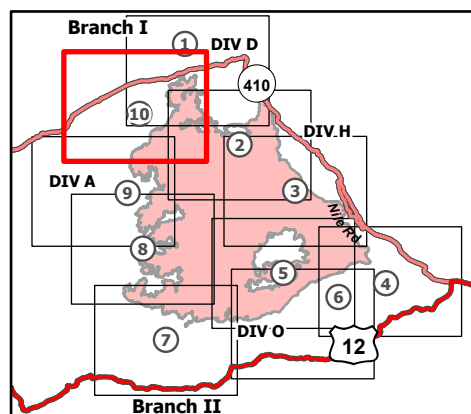
9/25/2021

105,682 acres at 9/23/2021 2130

Page 10 of 10



- Dip Site
- Helispot
- ) Division Break
- Drop Point
- ⊠ Closure
- Ⓢ Staging Area
- 🏠 Lookout
- 🔴 Hot Spot - Spot Fire
- ⚠ Value at Risk
- Other
- 🌉 Bridge
- 📶 Mobile Weather Unit
- 🌊 Water Source
- Ⓜ Completed Burnout
- ⊠ Completed Dozer Line
- H - Completed Hand Line
- R - Completed Road as Line
- H - Planned Hand Line
- M - Planned Mixed Construction Line
- R - Planned Road as Line
- 🔴 Fire Edge
- Contained Line
- 🟢 Administrative FS Boundary
- 🟡 FS Wilderness Boundary
- 🔴 Wildfire Daily Fire Perimeter



9/24/2021 2022  
Acres from IR  
North American 1983 Datum.  
Lat/Long Grid

