

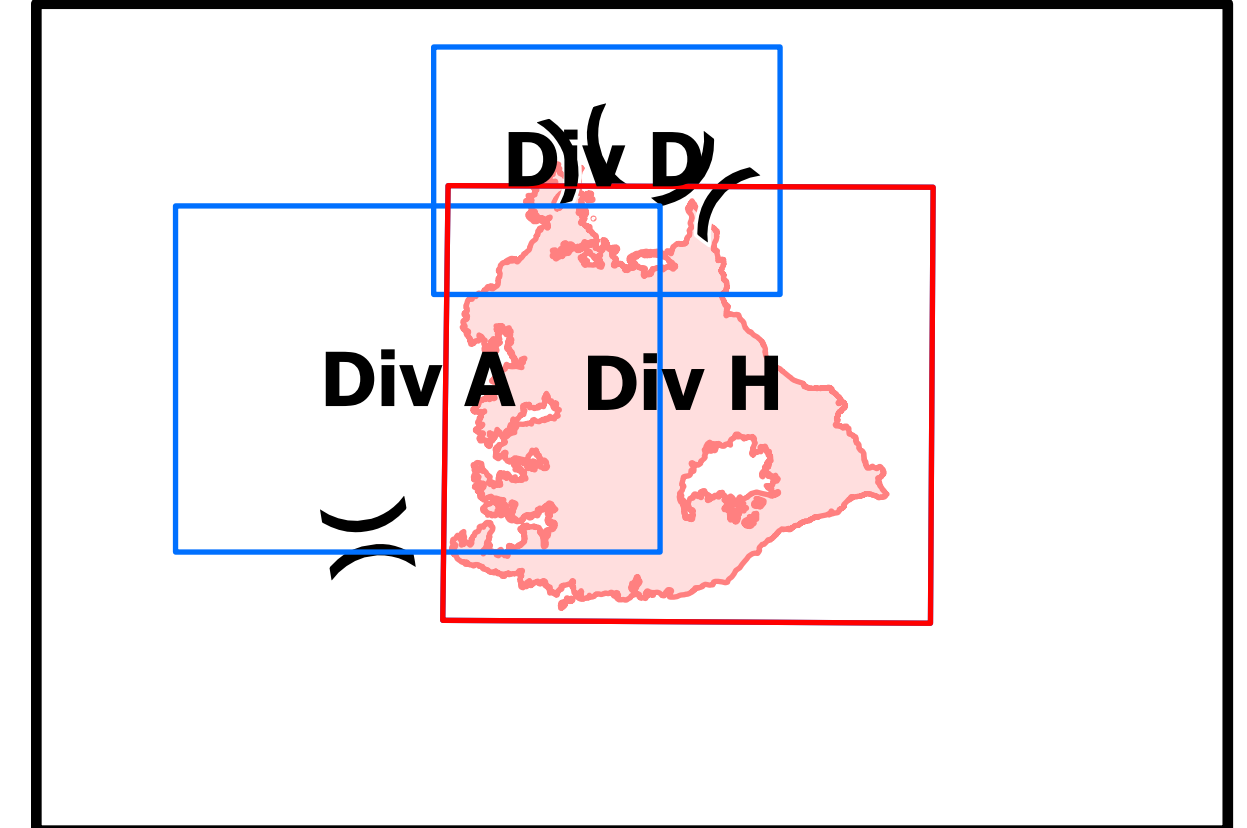
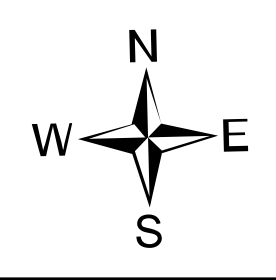
# Div H

## Ops Map Schneider Springs WA-OWF-000453 Division Map Book 9/30/2021

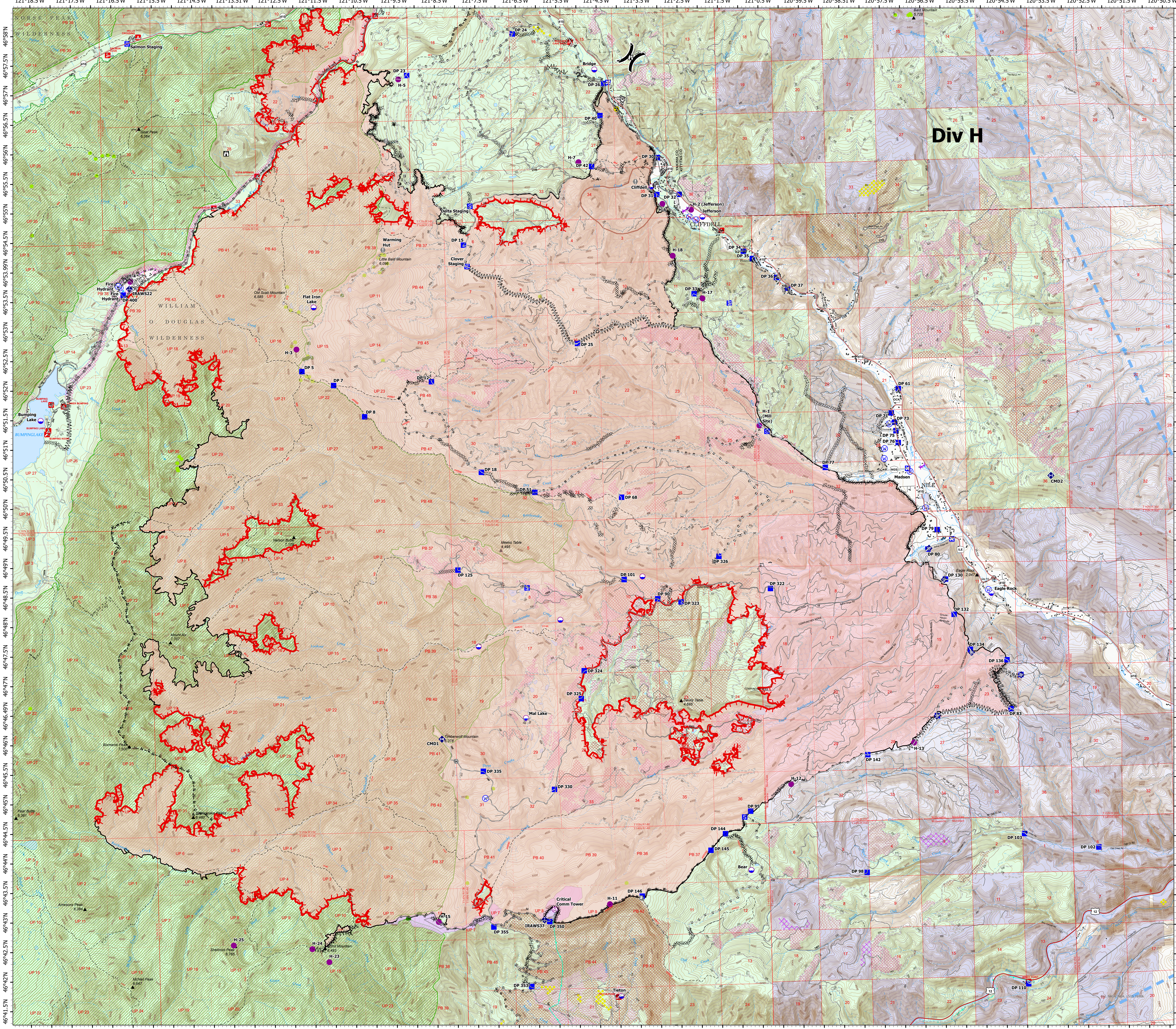
107,118 acres at 9/27/2021 0700



- Aerial Hazard
- Dip Site
- Hellspot
- Division Break
- Drop Point
- Closure
- Staging Area
- Lookout
- Hot Spot - Spot Fire
- Value at Risk
- Landmark
- Fire Station
- Bridge
- Mobile Weather Unit
- Internet Access
- Repeater
- Hazard
- Water Source
- Restricted Water Source
- Completed Dozer Line
- Completed Fuel Break
- Completed Hand Line
- Completed Mixed Construction Line
- Completed Plow Line
- Completed Road as Line
- Planned Dozer Line
- Planned Hand Line
- Planned Mixed Construction Line
- Planned Road as Line
- Access or Improved Road
- Aerial Hazard
- Temporary Flight Restriction
- Fire Edge
- Contained Line
- Natural Fuel Break
- Other
- Wildfire Daily Fire Perimeter
- Structures
- Seed Trees
- Whitebark Pine Trees
- Campground
- Group Campground
- Picnic Site
- Boating Site
- Interpretive Site
- Above Ground Power Lines
- Below Ground Power Lines
- State or PVT
- FS - Suitable for Passenger Car
- FS - High Clearance/Closed
- African Wiregrass
- Whitebark Pine Polygons
- Resource Concern
- Fire Fuels Treatments
- Mechanical Fuels Treatments
- DNR Fuel Treatments
- Federal Wilderness Boundary
- Forest Service Land
- State Public Lands
- Other State Lands
- Other Federal Lands
- Private; Local Government; Undesignated



9/29/2021 2053  
Acres from IR  
North American 1983 Datum, Lat/Long  
Grid



# Div H