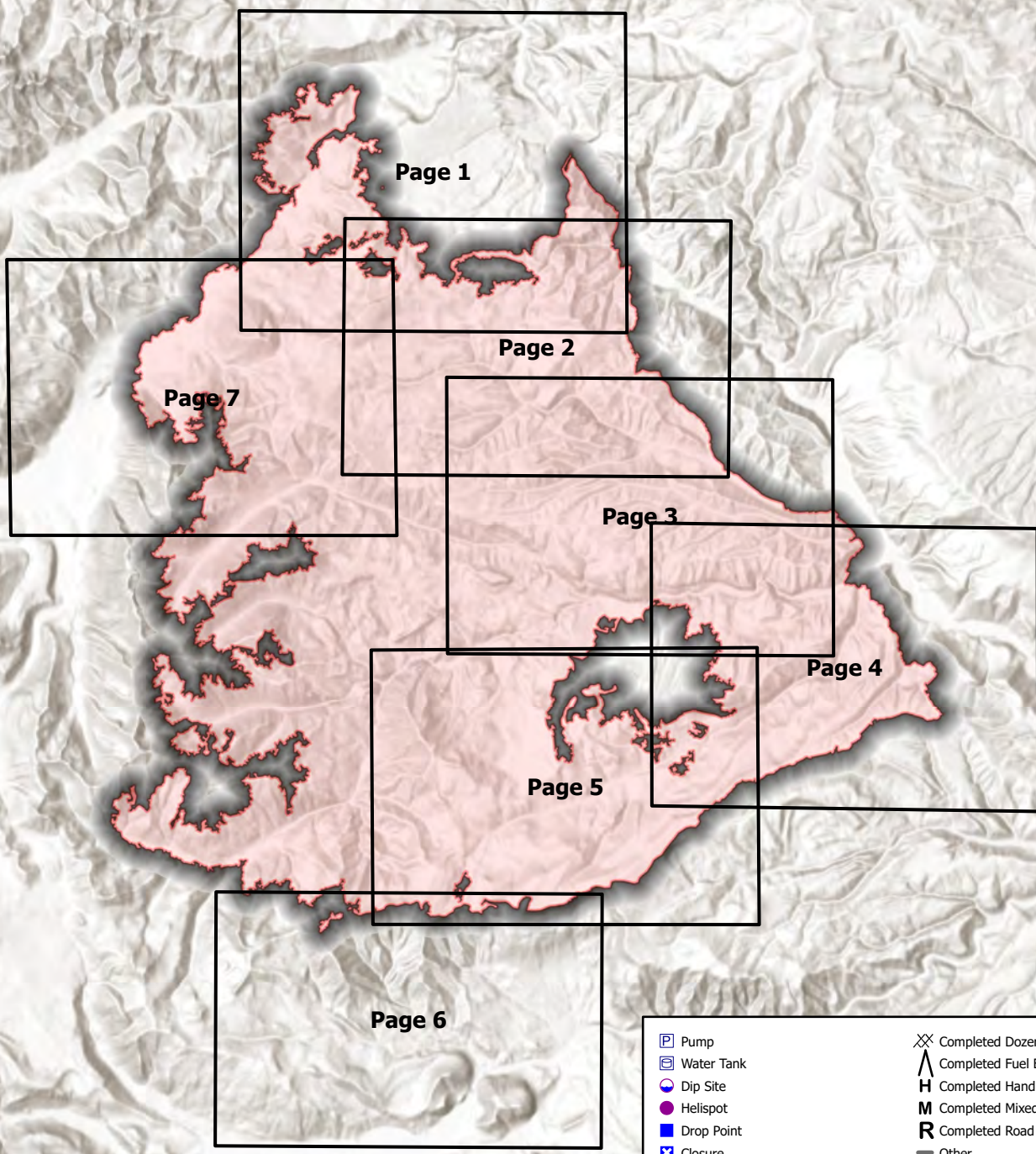


121°21.5'W 121°19'W 121°16.5'W 121°14'W 121°11.5'W 121°9'W 121°7'W 121°5'W 121°3'W 121°1'W 120°59'W 120°56.5'W 120°54'W 120°51.5'W 120°49'W

46°34'N 46°35.5'N 46°37'N 46°38.5'N 46°40'N 46°41.5'N 46°43'N 46°44.5'N 46°46'N 46°47.5'N 46°49'N 46°50.5'N 46°52'N 46°53.5'N 46°55'N 46°56.5'N 46°58'N 46°59.5'N 47°1'N 47°2'N 47°3'N 47°4'N



INDEX MAP



Pump	Completed Dozer Line
Water Tank	Completed Fuel Break
Dip Site	Completed Hand Line
Helispot	Completed Mixed Construction Line
Drop Point	Completed Road as Line
Closure	Other
Staging Area	Repair Line
Other	Road Repair
Fire Station	Water Drop
Water Development or Draft Site	Fire Edge
Repair Point	Contained Line
Landing or Log Deck	Wildfire Daily Fire Perimeter
Dozer Push	Completed - Inspected
Internet Access	Ready for Inspection
Repeater	Repair Needed
Water Source	Unknown
Completed Burnout	



121°22.5'W 121°20'W 121°17.5'W 121°15'W 121°12.5'W 121°10'W 121°8'W 121°5.5'W 121°3'W 121°1'W 120°59'W 120°56.5'W 120°54'W 120°51.5'W 120°49'W