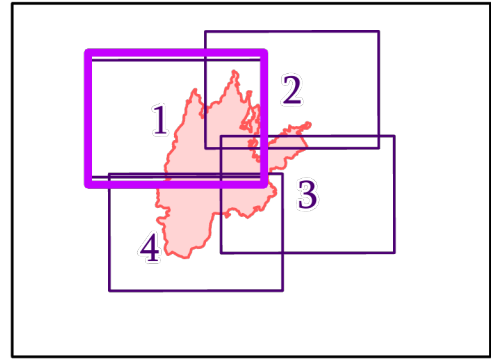
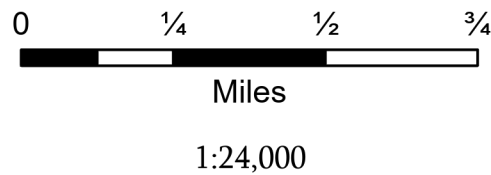


Summit Trail

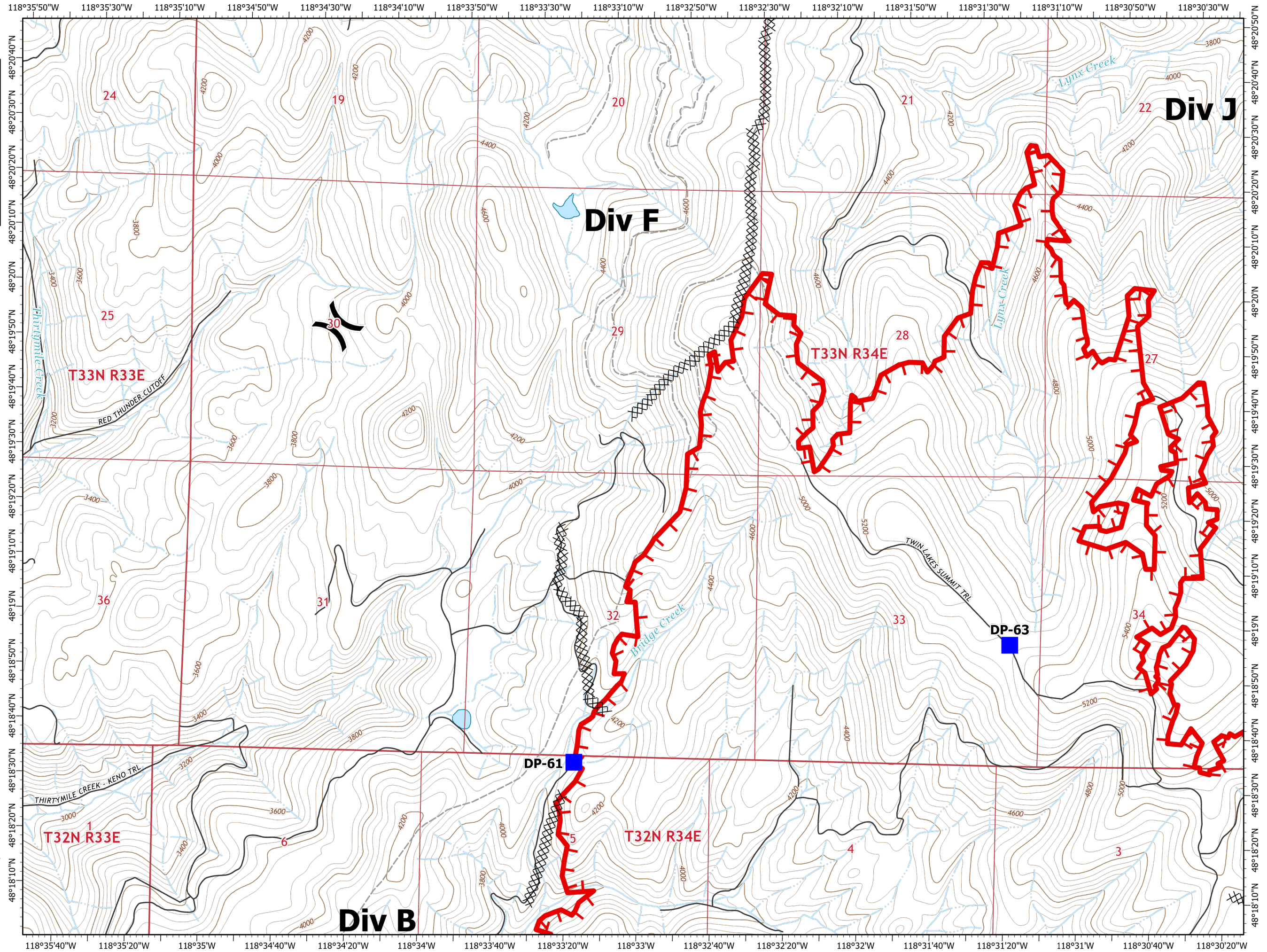


Page Page 1 of 4

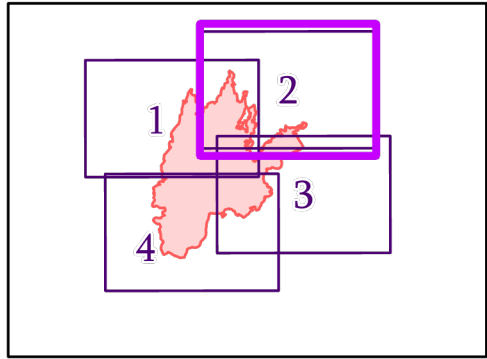
- Division Break
- Drop Point
- Completed Dozer Line
- Fire Edge
- State or Territory
- Local Road
- 4WD
- County or Equivalent



Name: NAD 1983 UTM Zone 11N



Summit Trail



Page Page 2 of 4

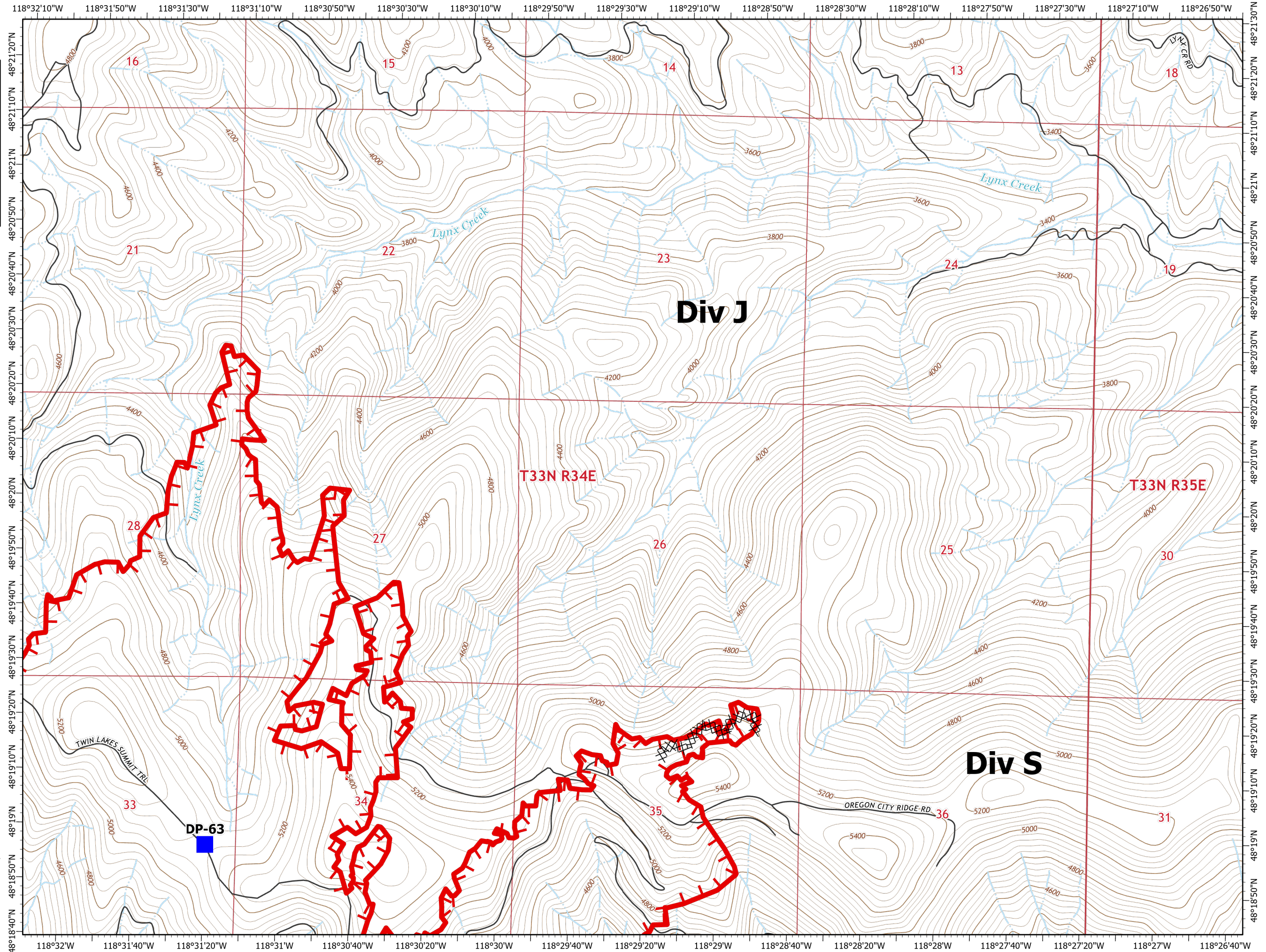
- Drop Point
- Completed Dozer Line
- Fire Edge
- State or Territory
- Local Road
- 4WD
- County or Equivalent



Miles

1:24,000

Name: NAD 1983 UTM Zone 11N



Div J

Div S

T33N R34E

T33N R35E

DP-63

33

28

21

16

34

27

22

15

35

26

23

14

36

25

24

13

31

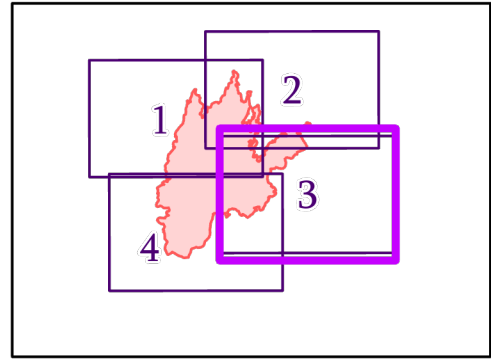
30

19

18

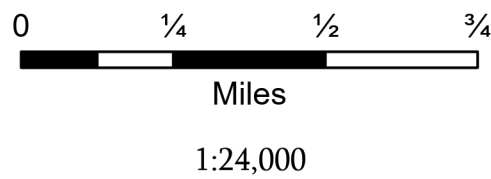
17

Summit Trail

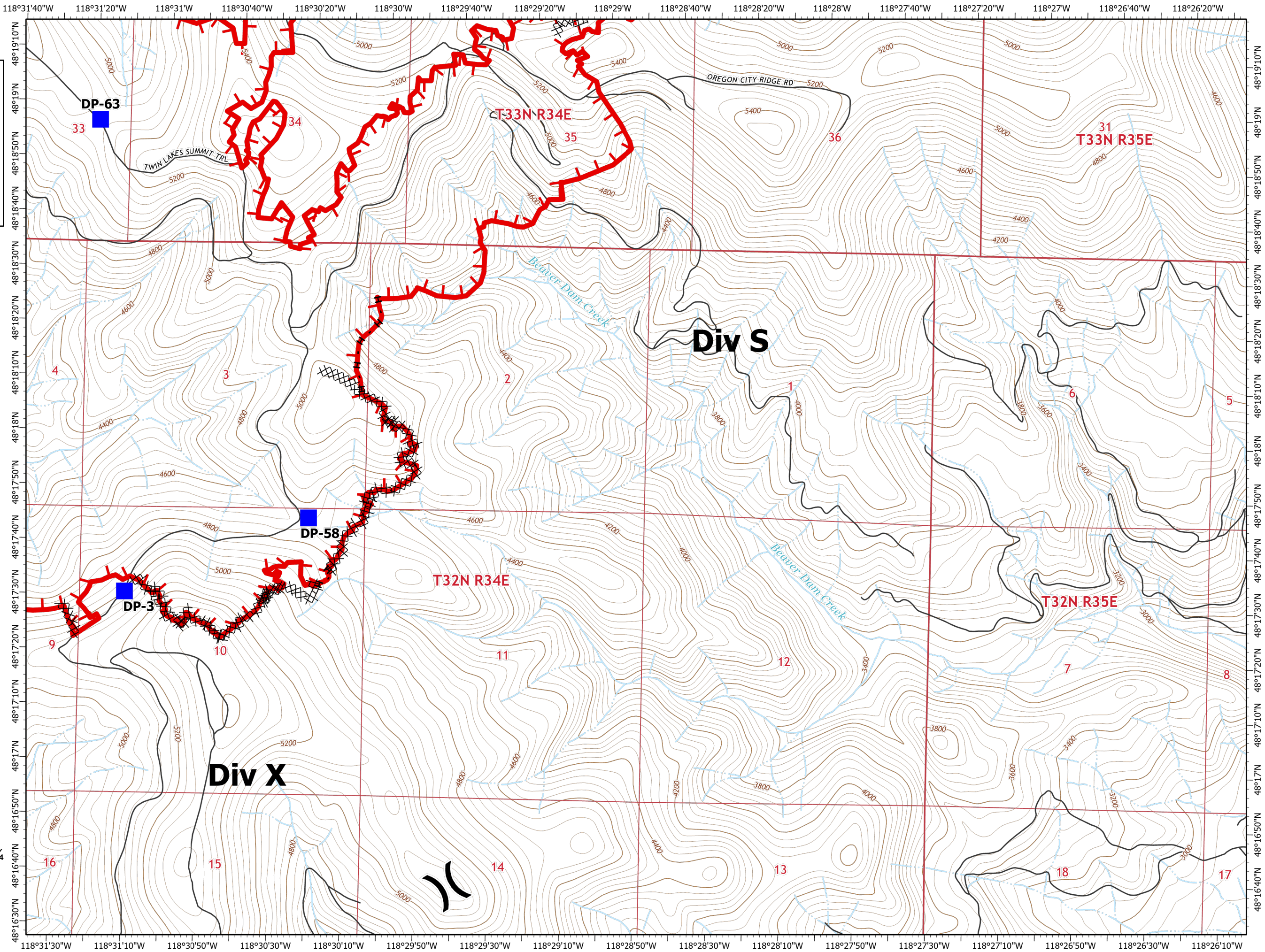


Page Page 3 of 4

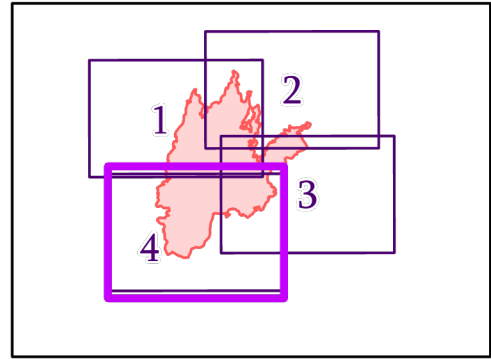
-  Division Break
-  Drop Point
-  Completed Dozer Line
-  Completed Hand Line
-  Fire Edge
-  State or Territory
-  Local Road
-  County or Equivalent



Name: NAD 1983 UTM Zone 11N

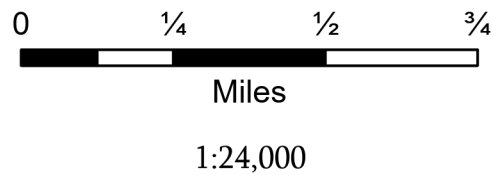


Summit Trail



Page Page 4 of 4

- Dip Site
- Helispot
- Division Break
- Drop Point
- Completed Dozer Line
- Completed Hand Line
- Fire Edge
- State or Territory
- Local Road
- 4WD
- County or Equivalent



Name: NAD 1983 UTM Zone 11N

