

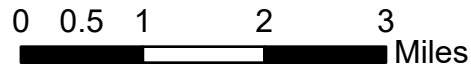
Pilot

Summit Trail Fire

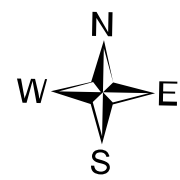
WA-COA-200087

July 25, 2021

8,853 acres at 07/24/2021 at 2130

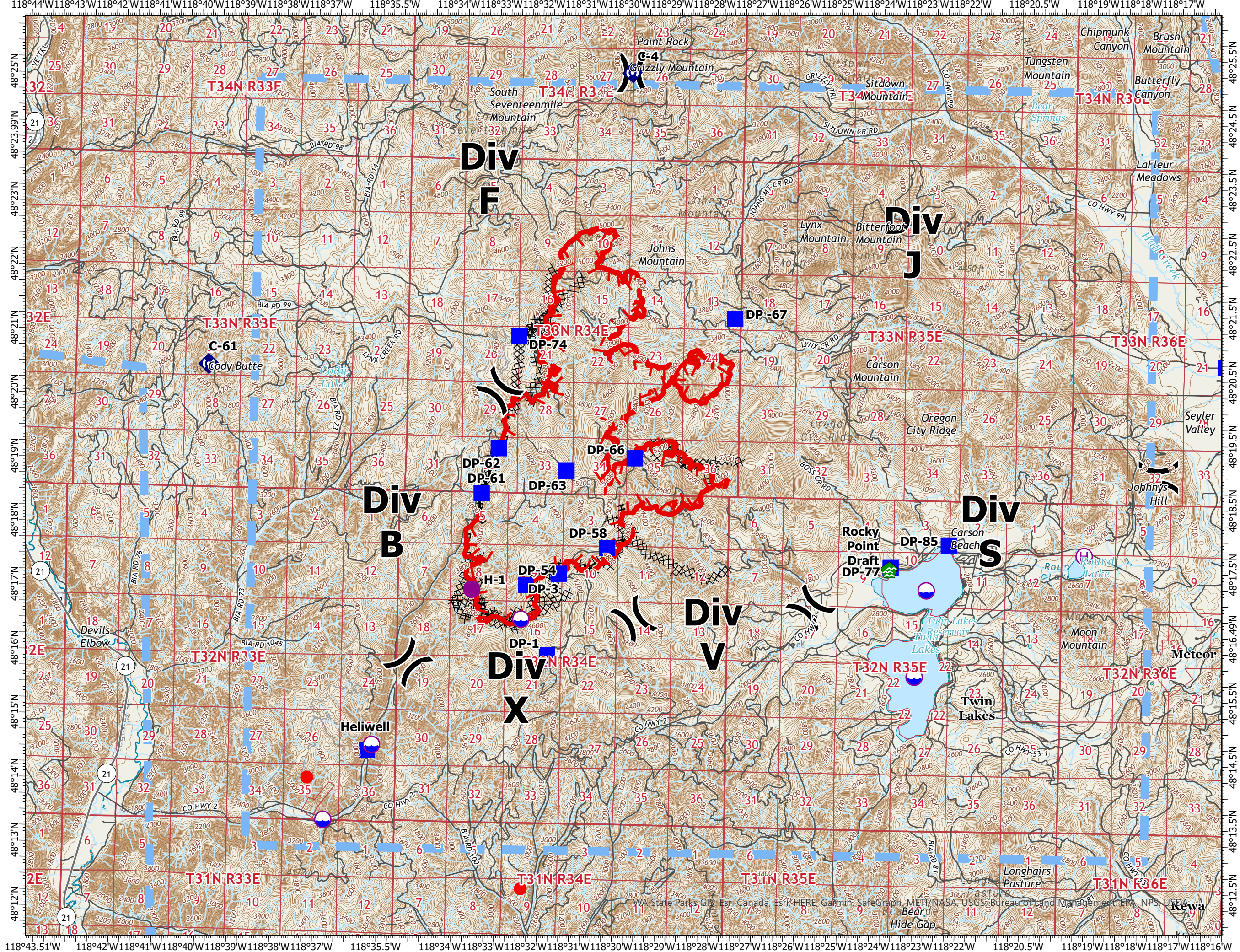


- Dip Site
- Helispot
- Helibase
- Division Break
- Drop Point
- Water Development or Draft Site
- Repeater
- Other Fires
- Label Point
- Completed Dozer Line
- Completed Hand Line
- Completed Road as Line
- Temporary Flight Restriction
- Fire Edge
- Contained Line
- Local Connector
- Local Road
- 4WD
- Runway



Jeff Sprovkin
7/25/2021 0411
NIROPS IR

North American 1927 Datum. LatLong Grid



WA State Parks GIS, Esri Canada, Esri, HERE, Garmin, SafeGraph, METI/NASA, USGS, Bureau of Land Management, EPA, NPS, USDA

Lat/Long Table

FC Point Type	Label	Latitude WGS84 DDM	Longitude WGS84 DDM
Drop Point	DP-1	48° 16.051'	-118° 31.701'
Drop Point	DP-3	48° 17.329'	-118° 31.464'
Drop Point	DP-58	48° 17.743'	-118° 30.343'
Drop Point	DP-63	48° 18.943'	-118° 31.328'
Drop Point	DP-54	48° 17.143'	-118° 32.221'
Drop Point	DP-50	48° 14.518'	-118° 35.861'
Drop Point	DP-83	48° 20.723'	-118° 15.934'
Helispot	H-1	48° 17.060'	-118° 33.491'
Drop Point	DP-61	48° 18.561'	-118° 33.302'
Drop Point	DP-74	48° 21.026'	-118° 32.496'
Drop Point	DP-62	48° 19.269'	-118° 32.924'
Drop Point	DP-66	48° 19.153'	-118° 29.738'
Drop Point	DP -67	48° 21.358'	-118° 27.448'
Drop Point	DP-85	48° 17.883'	-118° 22.350'
Drop Point	DP-77	48° 17.518'	-118° 23.703'