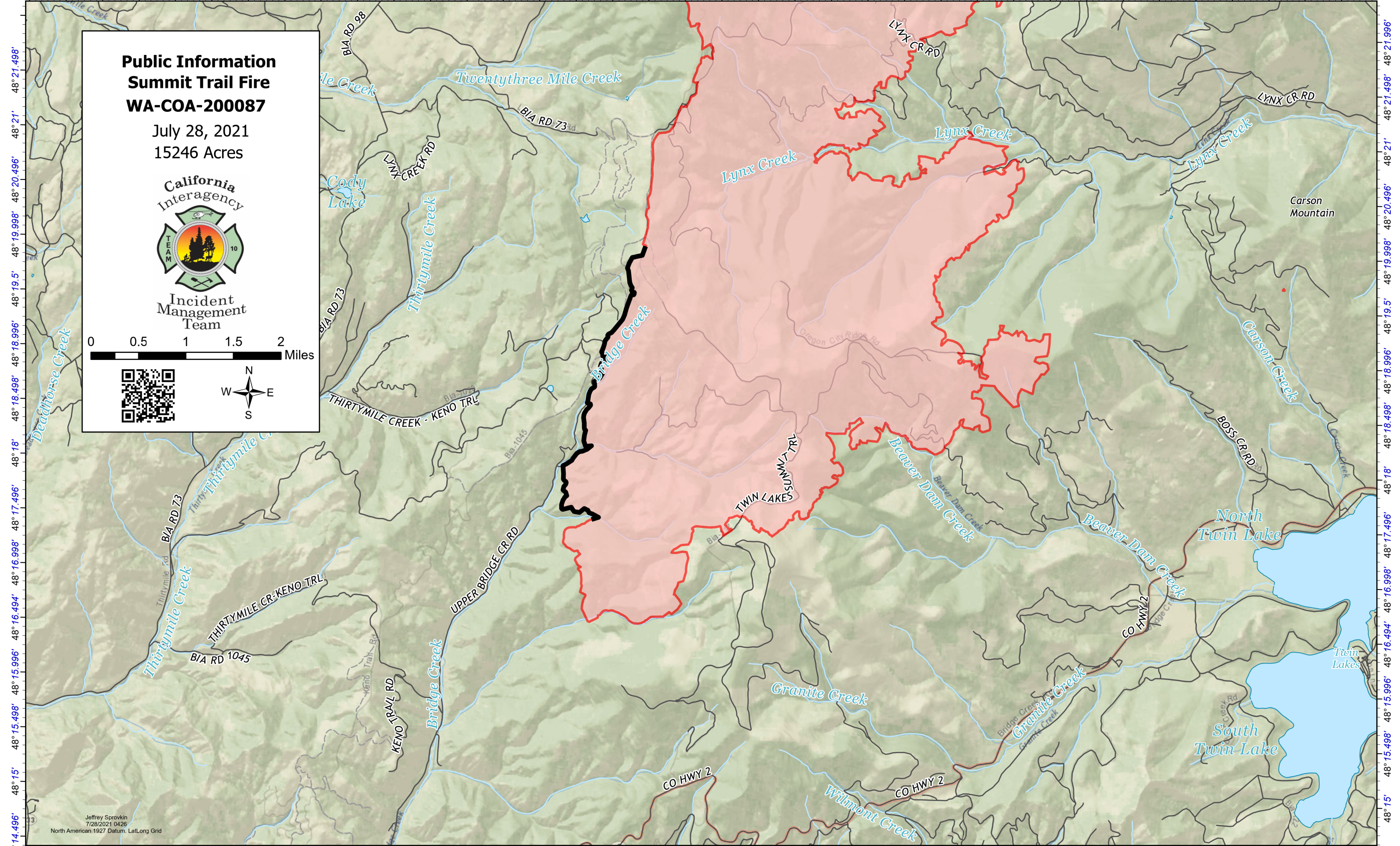



118° 41.004' 118° 40.002' 118° 39' 118° 38.004' 118° 37.002' 118° 36.006' 118° 35.004' 118° 34.002' 118° 33' 118° 32.004' 118° 31.002' 118° 30' 118° 29.004' 118° 28.002' 118° 27' 118° 26.004' 118° 25.002' 118° 24' 118° 23.004'





**Public Information**  
**Summit Trail Fire**  
**WA-COA-200087**

July 28, 2021  
 15246 Acres



California Interagency  
 Incident Management Team

0 0.5 1 1.5 2 Miles

48° 14.496' 48° 15' 48° 15.498' 48° 15.996' 48° 16.494' 48° 16.998' 48° 17.496' 48° 17.998' 48° 18' 48° 18.498' 48° 18.996' 48° 19.5' 48° 19.998' 48° 20.496' 48° 21' 48° 21.498' 48° 21.996'

Jeffrey Sprovin  
7/28/2021 0426  
North American 1927 Datum, Lat/Long Grid