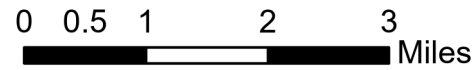


Pilot

Summit Trail Fire
WA-COA-200087
July 28, 2021

15246 acres at 07/27/2021 at 2200

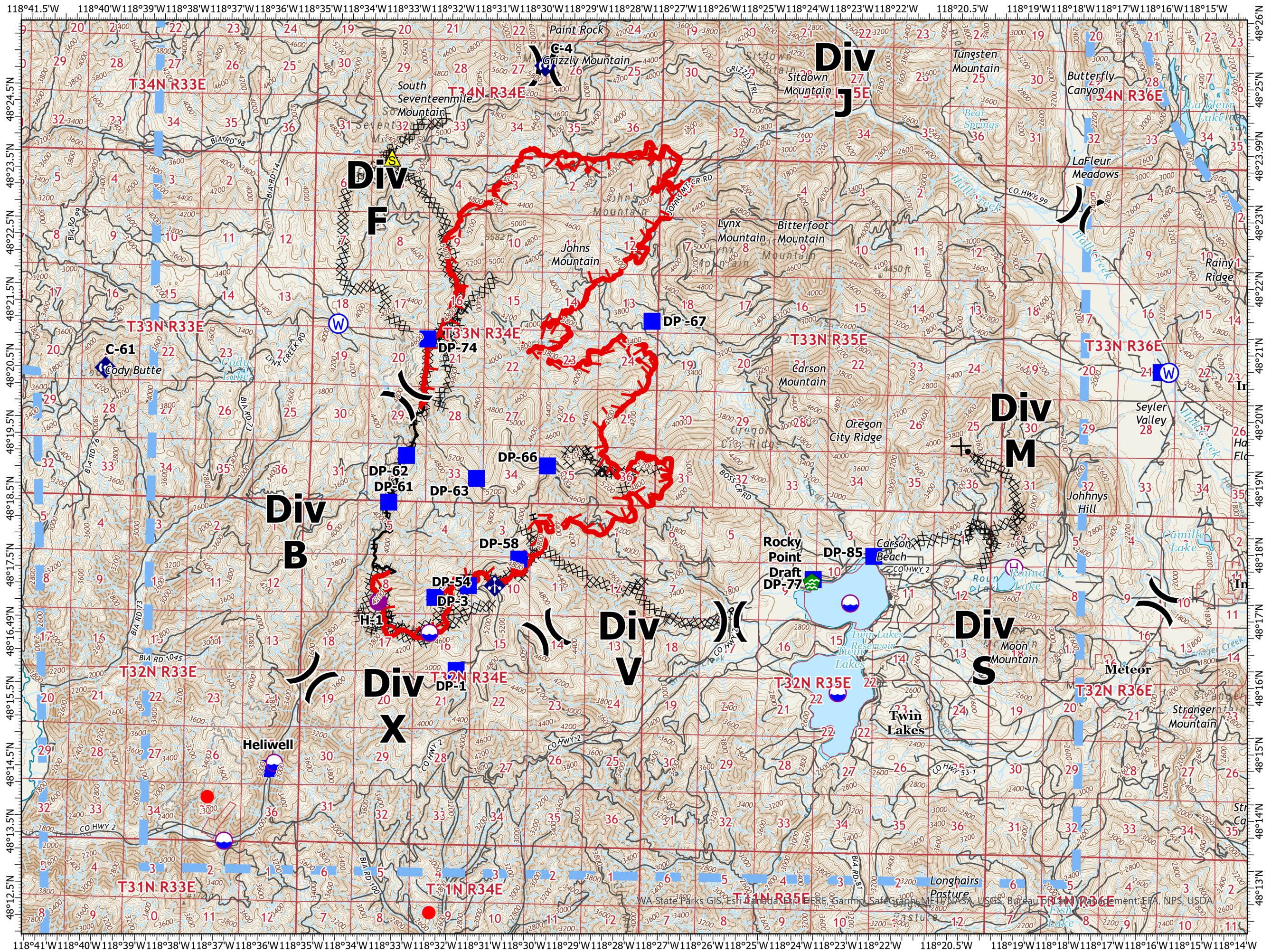


- Dip Site
- Helispot
- Helibase
- Division Break
- Drop Point
- Water Development or Draft Site
- Mobile Weather Unit
- Repeater
- Safety Zone
- Water Source
- Other Fires
- Completed Dozer Line
- Completed Hand Line
- Completed Road as Line
- Planned Dozer Line
- Temporary Flight Restriction
- Fire Edge
- Contained Line
- Local Connector
- Local Road
- 4WD
- Runway



Jeff Sprovkin
7/28/2021 0447
NIROPS IR

North American 1927 Datum. LatLong Grid



WA State Parks GIS, Esri, Canada, USGS, EERE, Garmin, SafeGraph, METI, NASA, USGS, Bureau of Land Management, EPA, NPS, USDA

Lat/Long Table

FeatureCategory	Label	LatWGS84_DDM	LongWGS84_DDM
Drop Point	DP-1	48° 16.051' N	118° 31.701' W
Drop Point	DP-3	48° 17.329' N	118° 31.464' W
Drop Point	DP-58	48° 17.743' N	118° 30.343' W
Drop Point	DP-63	48° 18.943' N	118° 31.328' W
Drop Point	DP-54	48° 17.143' N	118° 32.221' W
Drop Point	DP-50	48° 14.518' N	118° 35.861' W
Drop Point	DP-83	48° 20.723' N	118° 15.934' W
Helispot	H-1	48° 17.060' N	118° 33.491' W
Drop Point	DP-61	48° 18.561' N	118° 33.302' W
Drop Point	DP-74	48° 21.026' N	118° 32.496' W
Drop Point	DP-62	48° 19.269' N	118° 32.924' W
Drop Point	DP-66	48° 19.153' N	118° 29.738' W
Drop Point	DP -67	48° 21.358' N	118° 27.448' W
Drop Point	DP-85	48° 17.883' N	118° 22.350' W
Drop Point	DP-77	48° 17.518' N	118° 23.703' W