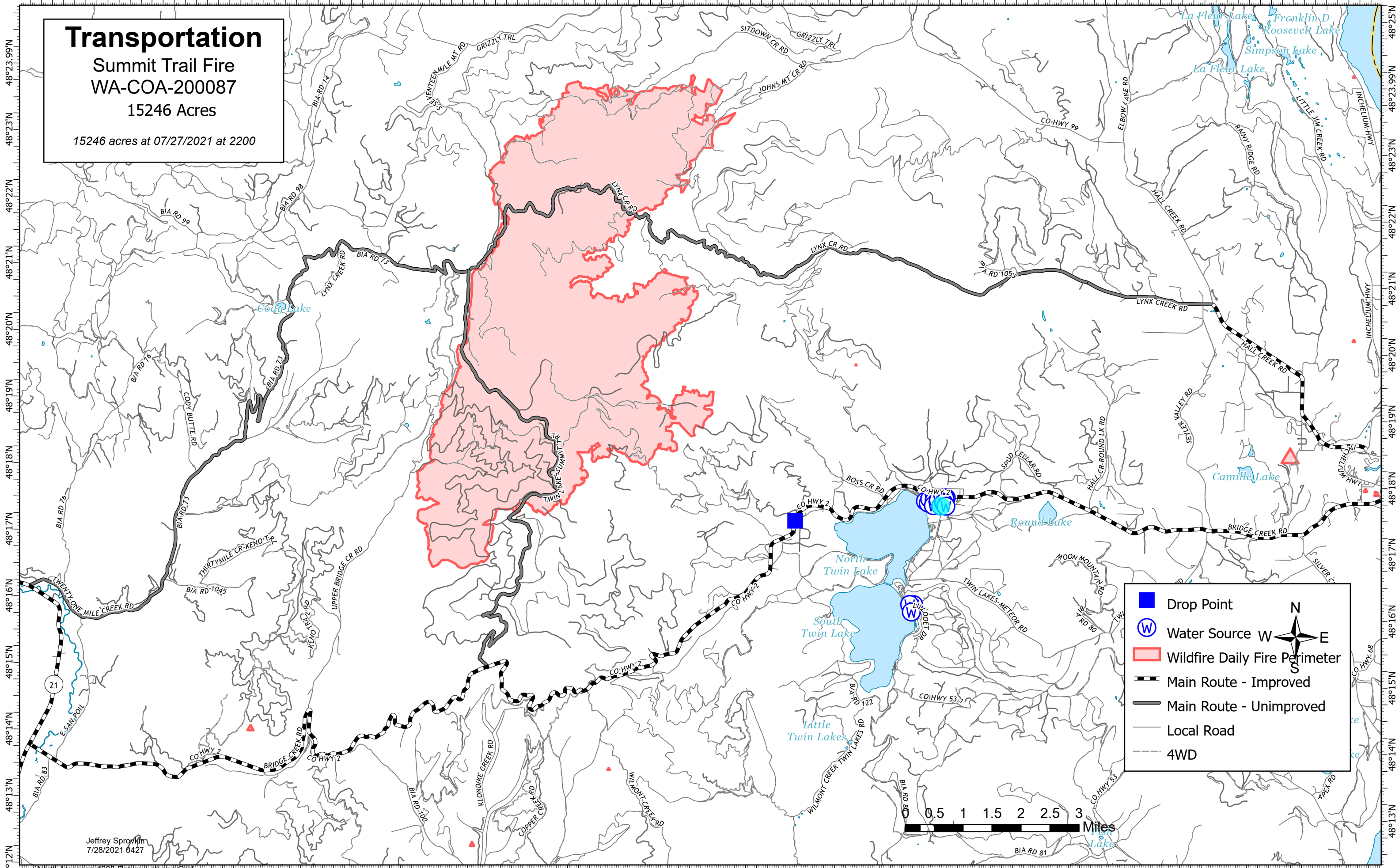


118°42.5'W 118°41'W 118°40'W 118°39'W 118°38'W 118°37'W 118°36'W 118°35'W 118°34'W 118°33'W 118°32'W 118°31'W 118°30'W 118°29'W 118°28'W 118°27'W 118°26'W 118°25'W 118°24'W 118°23'W 118°22'W 118°20.5'W 118°19'W 118°18'W 118°17'W 118°16'W 118°15'W 118°14'W 118°13'W



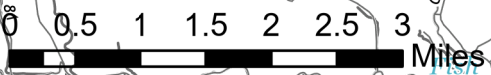
Transportation
Summit Trail Fire
WA-COA-200087
15246 Acres
15246 acres at 07/27/2021 at 2200

Legend

- Drop Point
- Water Source
- Wildfire Daily Fire Perimeter
- Main Route - Improved
- Main Route - Unimproved
- Local Road
- 4WD

North Arrow

N
E
S
W



Jeffrey Sprowkin
7/28/2021 0427

North American 1988 Datum Lat/Long Grid
118°42'W 118°41'W 118°40'W 118°39'W 118°38'W 118°37'W 118°36'W 118°35'W 118°34'W 118°33'W 118°32'W 118°31'W 118°30'W 118°29'W 118°28'W 118°27'W 118°26'W 118°25'W 118°24'W 118°23'W 118°22'W 118°20.5'W 118°19'W 118°18'W 118°17'W 118°16'W 118°15'W 118°14'W 118°13'W 118°12'W