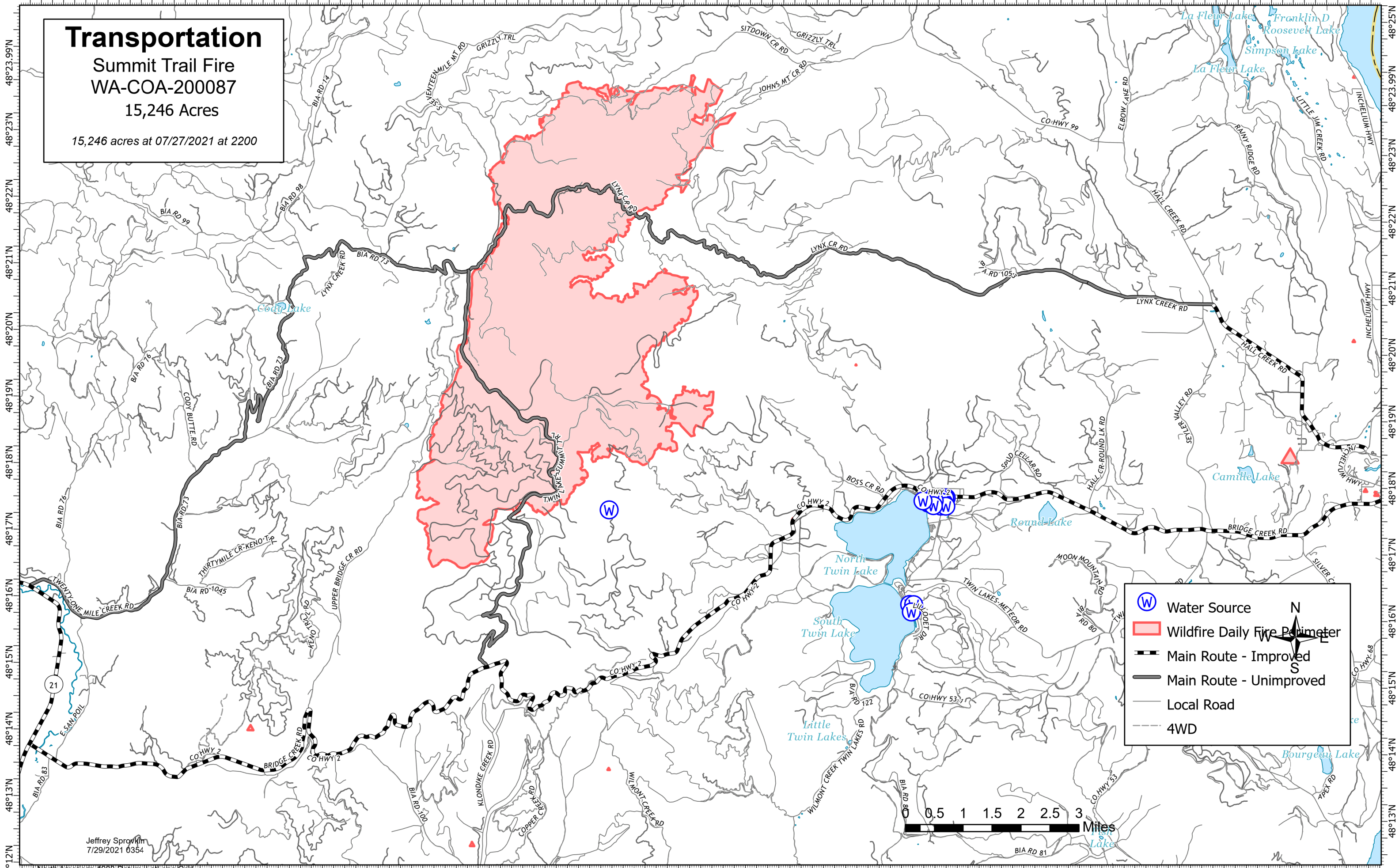


118°42.5'W 118°41'W 118°40'W 118°39'W 118°38'W 118°37'W 118°36'W 118°35'W 118°34'W 118°33'W 118°32'W 118°31'W 118°30'W 118°29'W 118°28'W 118°27'W 118°26'W 118°25'W 118°24'W 118°23'W 118°22'W 118°20.5'W 118°19'W 118°18'W 118°17'W 118°16'W 118°15'W 118°14'W 118°13'W



Transportation
Summit Trail Fire
WA-COA-200087
15,246 Acres
15,246 acres at 07/27/2021 at 2200

Water Source (W symbol)

Wildfire Daily Fire Perimeter (Red outline)

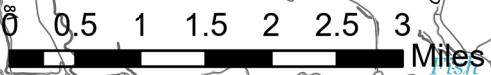
Main Route - Improved (Dashed black line)

Main Route - Unimproved (Solid grey line)

Local Road (Thin grey line)

4WD (Dashed grey line)

North Arrow (N, S)



Jeffrey Sporkin
7/29/2021 0354

North American 1988 Datum Lat/Long Grid
118°42'W 118°41'W 118°40'W 118°39'W 118°38'W 118°37'W 118°36'W 118°35'W 118°34'W 118°33'W 118°32'W 118°31'W 118°30'W 118°29'W 118°28'W 118°27'W 118°26'W 118°25'W 118°24'W 118°23'W 118°22'W 118°20.5'W 118°19'W 118°18'W 118°17'W 118°16'W 118°15'W 118°14'W 118°13'W 118°12'W