

IAP MAP

Summit Trail Fire

WA-COA-200087

18,530 Acres



August 1, 2021

Assignment Breaks

X Division Break

|| Branch Break

Ops Completed

o o Completed Dozer Line

H 2 Completed Hand Line

R 2 Completed Road as Line

Reference

--- Other

Safety

|| Escape Route

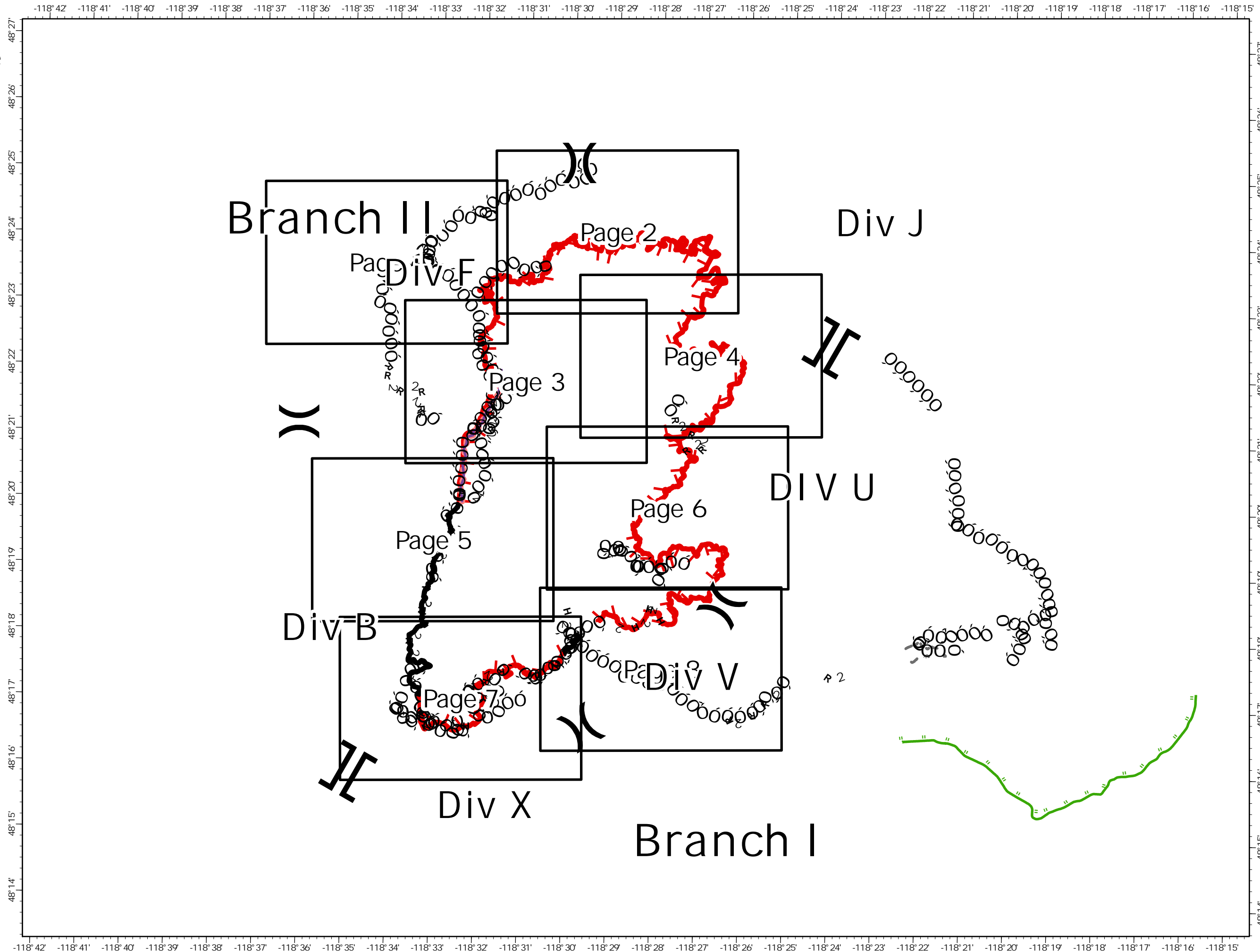
Air Ops

o o Retardant Drop

Fire Perimeter

█ Fire Edge

█ Contained Line



1:100,000
NAD 1983
UTM11N

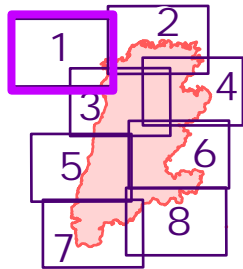
IAP MAP

Summit Trail Fire








WA-COA-200087
18,530 Acres

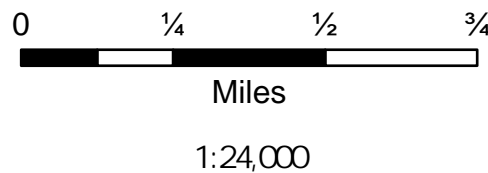


August 1, 2021

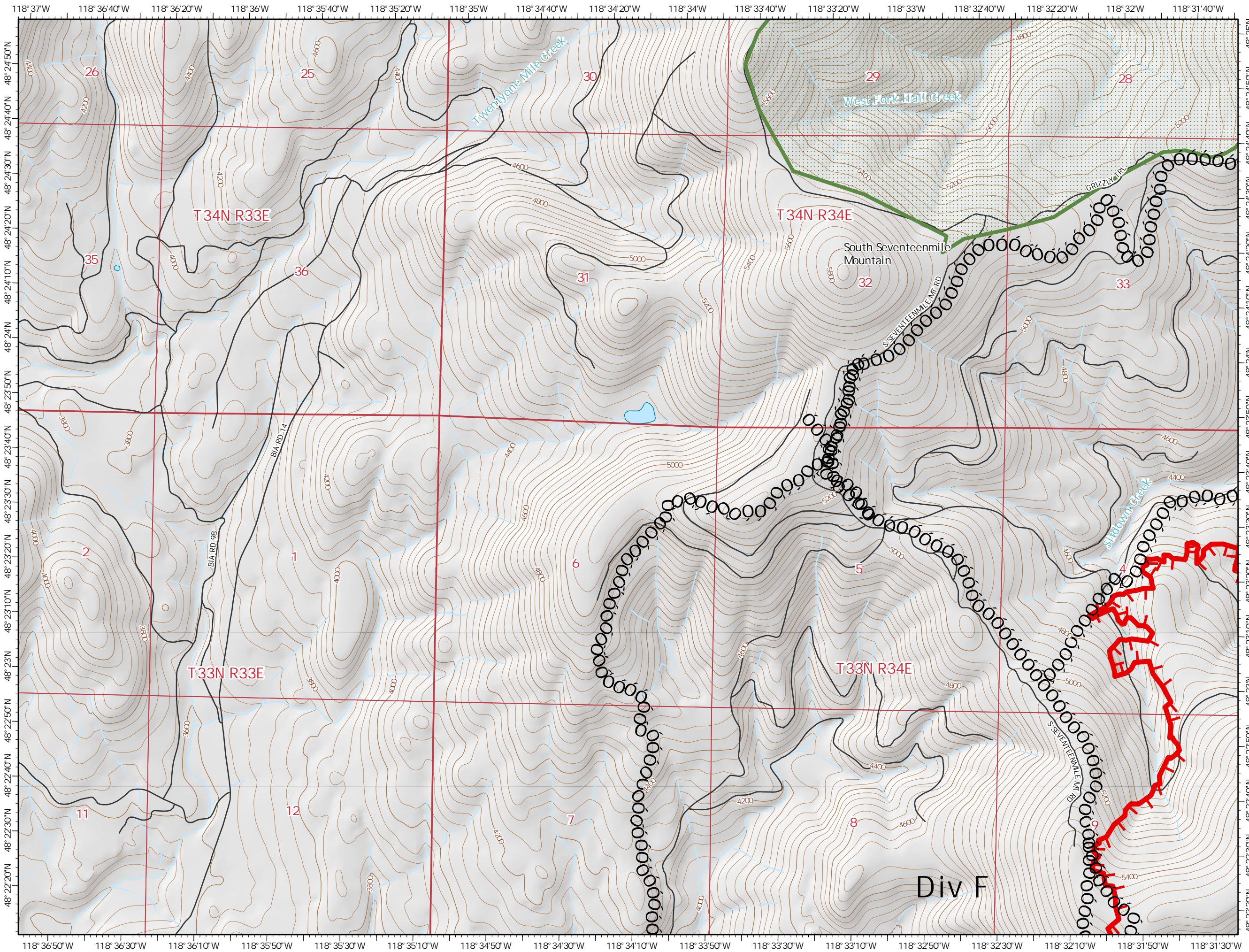


Page Page 1 of 8

-  Completed Dozer Line
-  Fire Edge
-  TNM Derived Names
-  State or Territory
-  Local Road
-  County or Equivalent
-  Wilderness Area



Name: NAD 1983 UTM Zone 11N



Div F

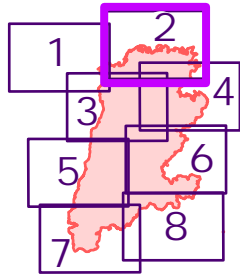
IAP MAP

Summit Trail Fire

WA-COA-200087
18,530 Acres

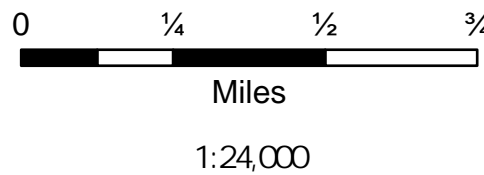


August 1, 2021

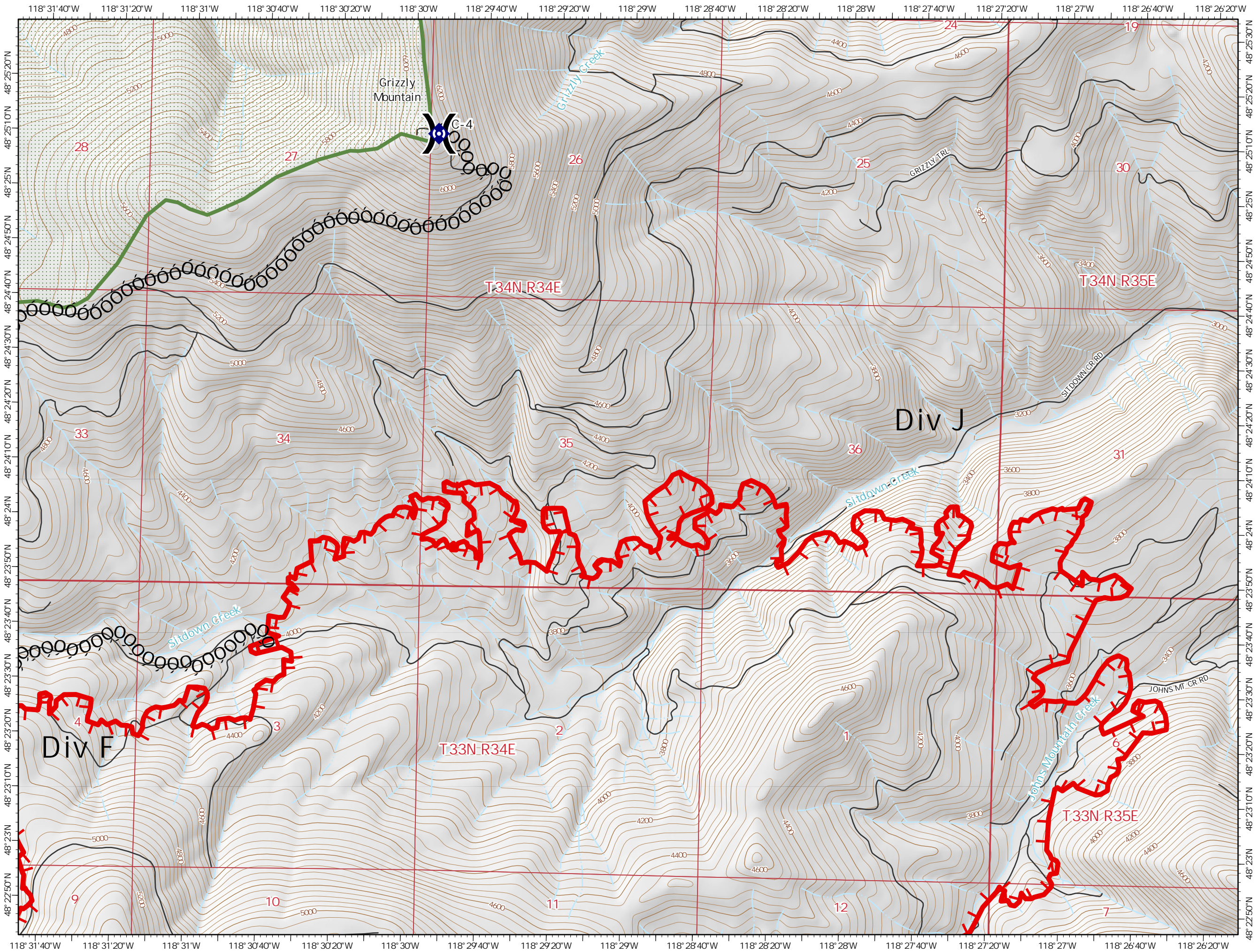


Page Page 2 of 8

- ⌋ Division Break
- Ⓢ Repeater
- ⊖ Completed Dozer Line
- ▬ Fire Edge
- TNM Derived Names
- ▭ State or Territory
- Local Road
- ▭ County or Equivalent
- ▭ Wilderness Area



Name: NAD 1983 UTM Zone 11N



IAP MAP

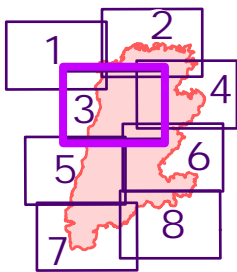
Summit Trail Fire

WA-COA-200087

18,530 Acres

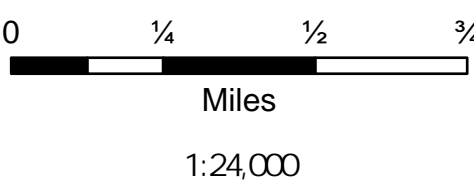


August 1, 2021

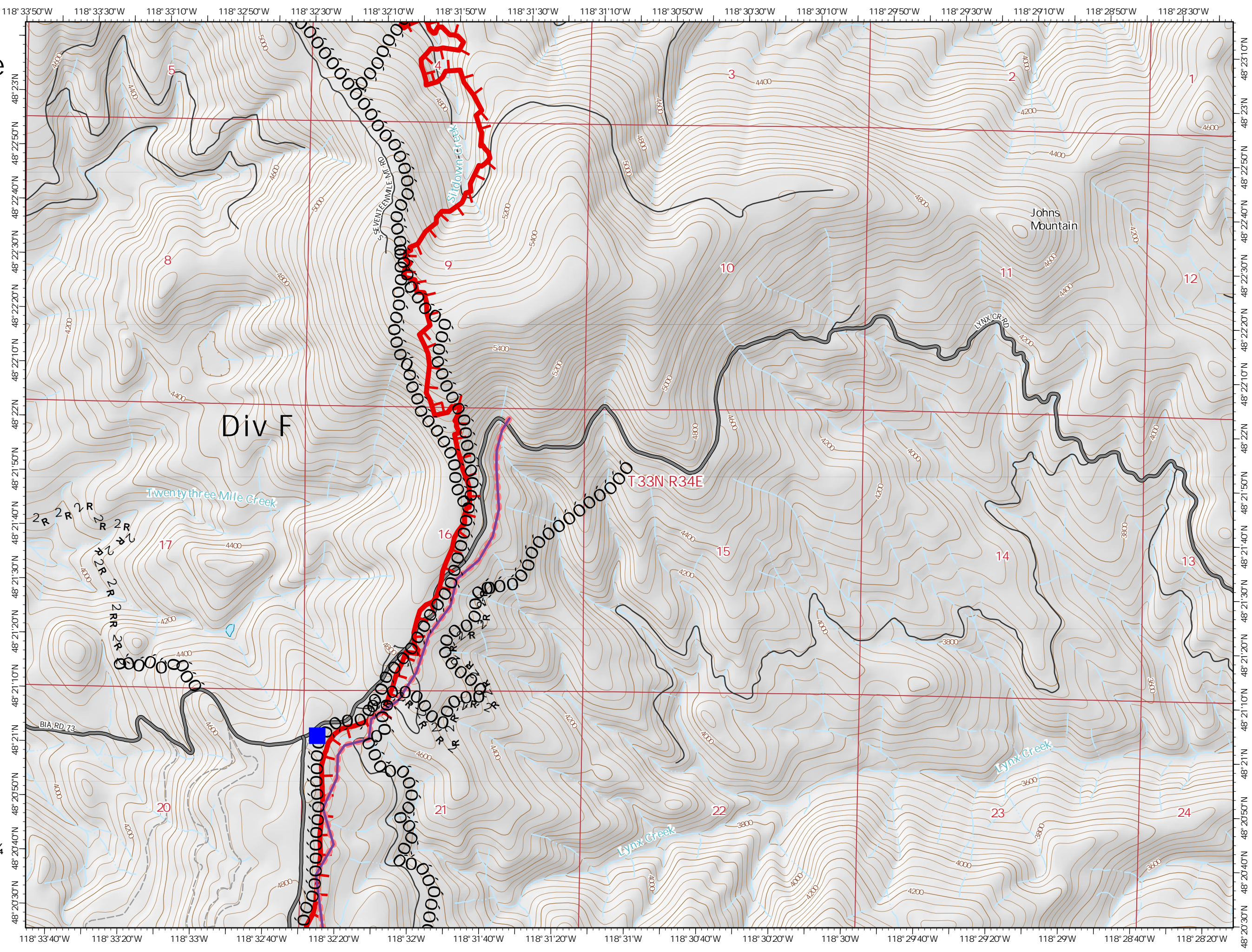


Page Page 3 of 8

- Drop Point
- Completed Dozer Line
- R Completed Road as Line
- Retardant Drop
- Fire Edge
- TNM Derived Names
- State or Territory
- Main Route - Unimproved
- Local Road
- 4WD
- County or Equivalent



Name: NAD 1983 UTM Zone 11N



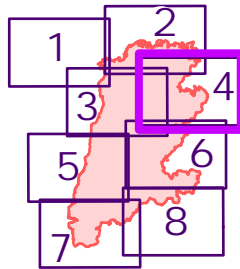
IAP MAP

Summit Trail Fire

WA-COA-200087
18,530 Acres

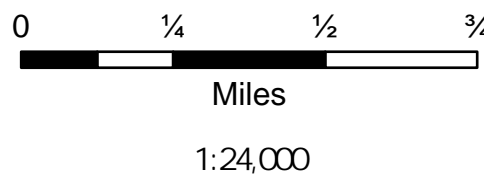


August 1, 2021

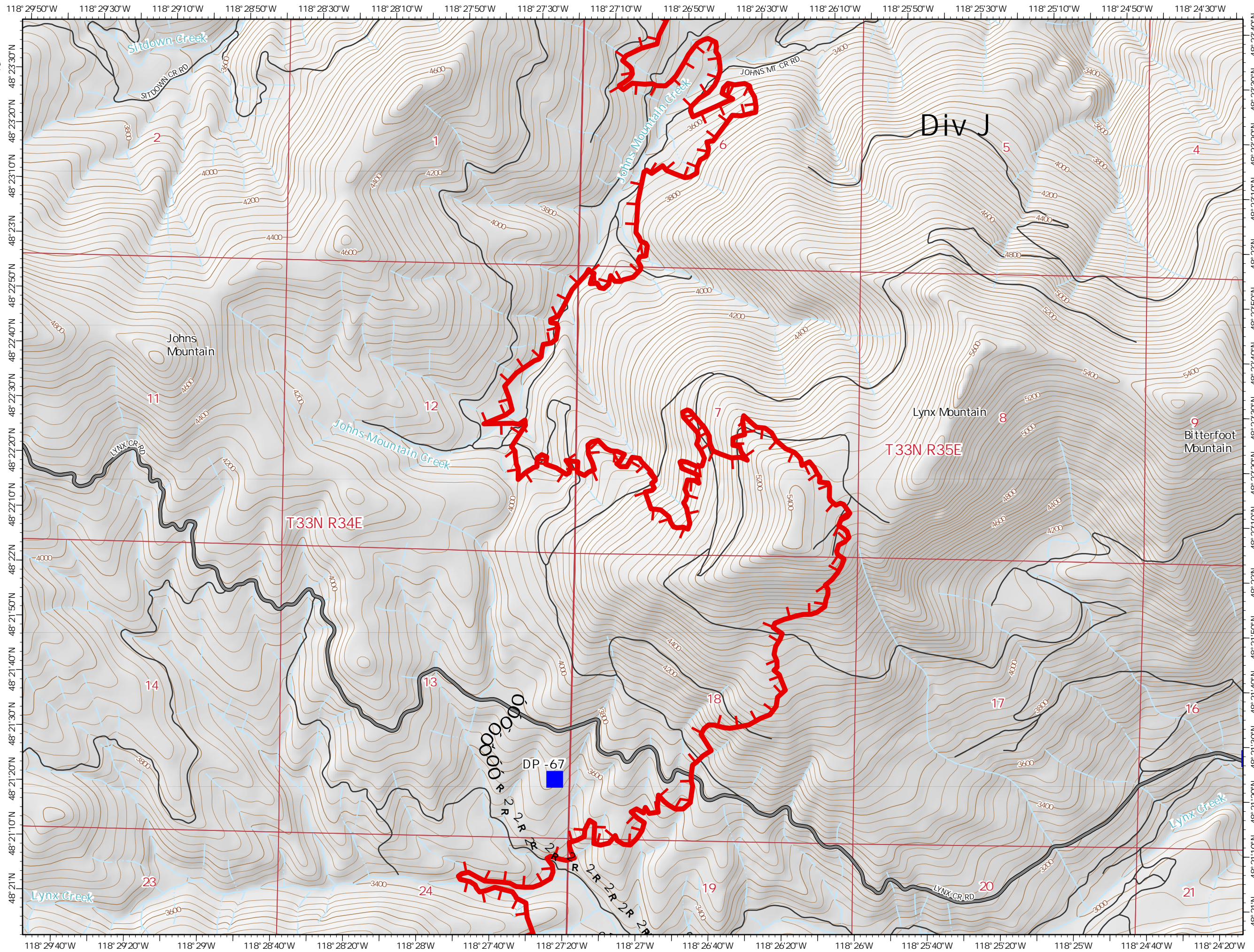


Page Page 4 of 8

- Branch Break
- Drop Point
- Completed Dozer Line
- Completed Road as Line
- Fire Edge
- TNM Derived Names
- State or Territory
- Main Route - Unimproved
- Local Road
- County or Equivalent



Name: NAD 1983 UTM Zone 11N



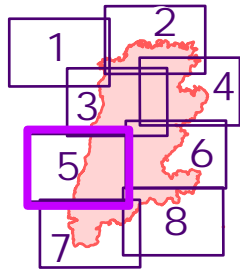
IAP MAP

Summit Trail Fire

WA-COA-200087
18,530 Acres

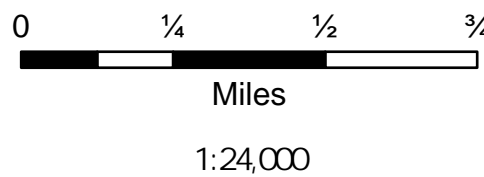


August 1, 2021

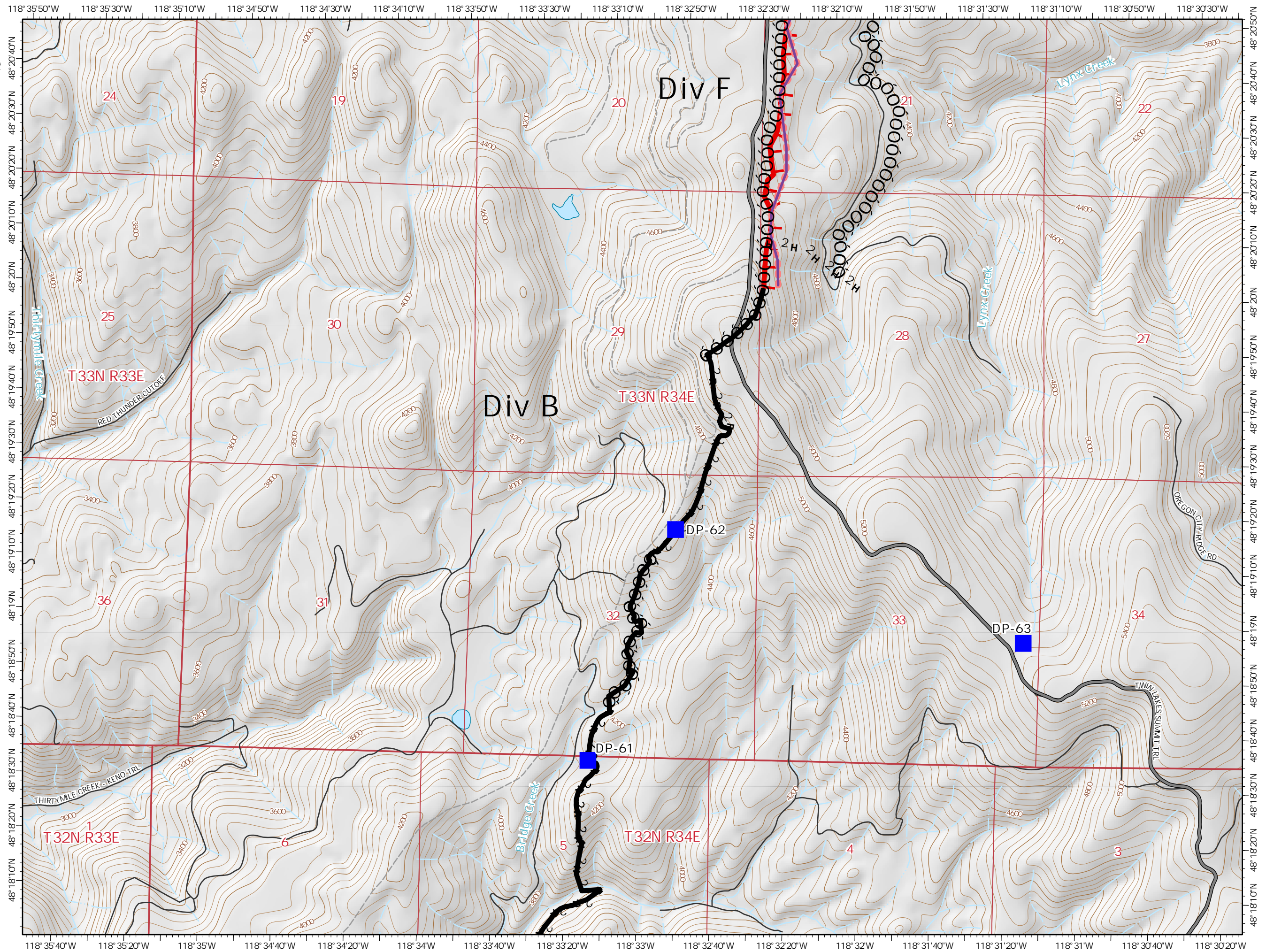


Page Page 5 of 8

- Drop Point
- Completed Dozer Line
- Completed Hand Line
- Completed Road as Line
- Retardant Drop
- Fire Edge
- Contained Line
- State or Territory
- Main Route - Unimproved
- Local Road
- 4WD
- County or Equivalent



Name: NAD 1983 UTM Zone 11N



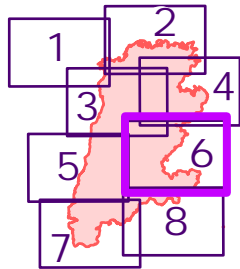
IAP MAP

Summit Trail Fire

WA-COA-200087
18,530 Acres

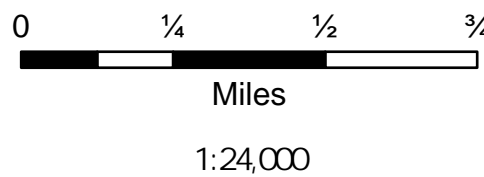


August 1, 2021

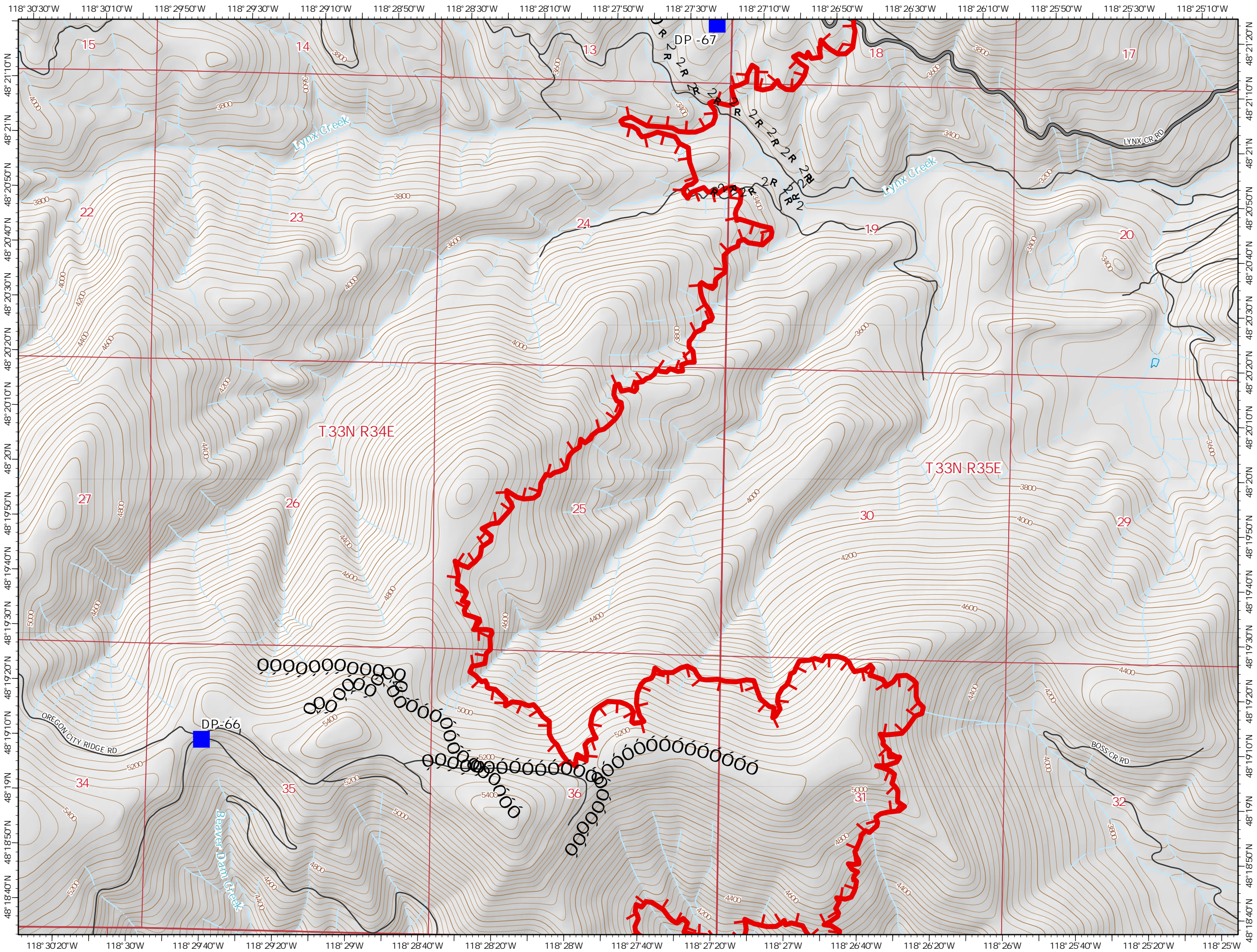


Page Page 6 of 8

- Drop Point
- Completed Dozer Line
- R Completed Road as Line
- ┌ Fire Edge
- State or Territory
- Main Route - Unimproved
- Local Road
- County or Equivalent



Name: NAD 1983 UTM Zone 11N



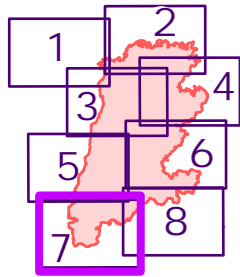
IAP MAP

Summit Trail Fire

WA-COA-200087
18,530 Acres

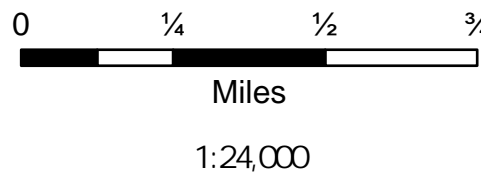


August 1, 2021

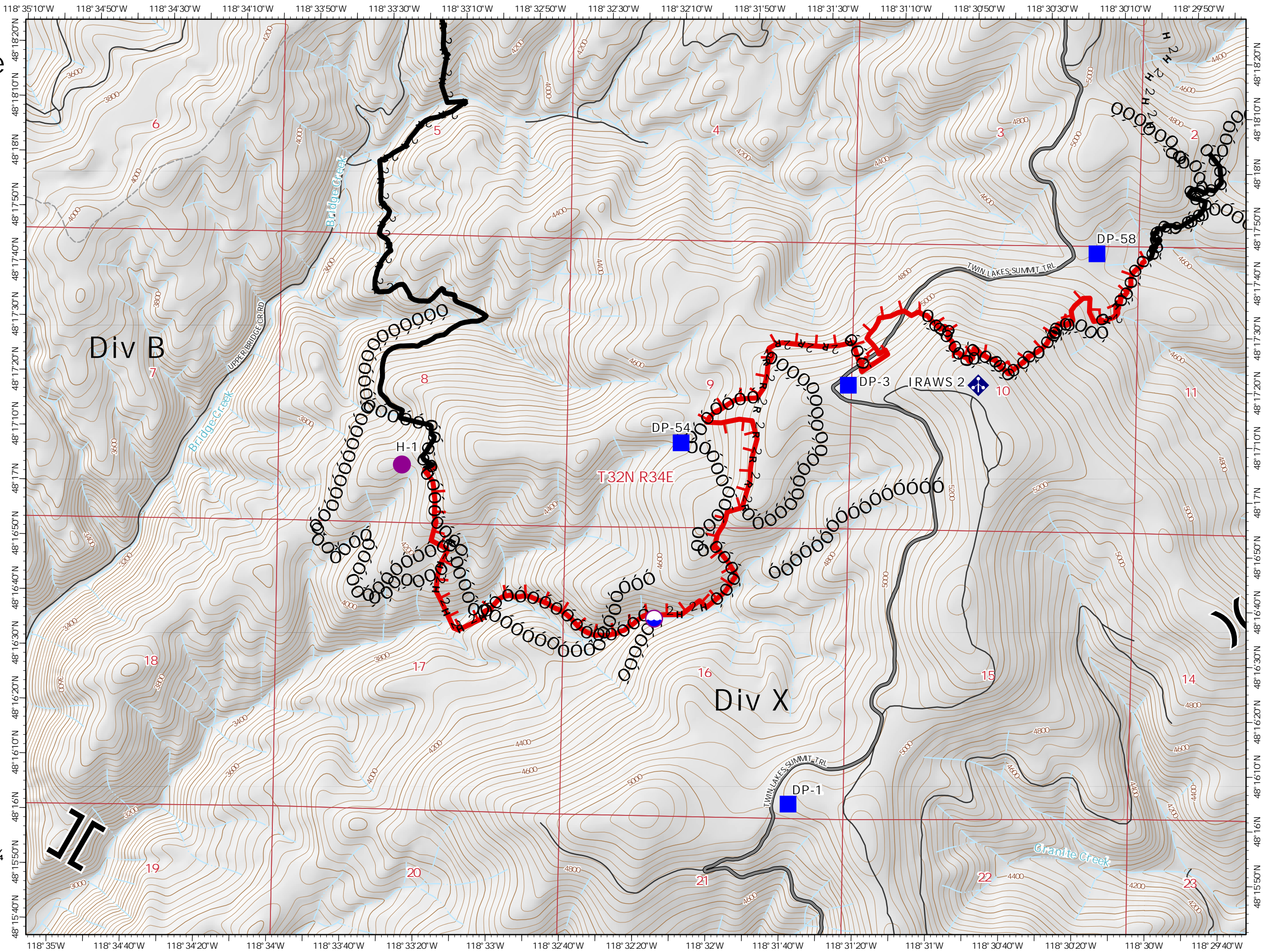


Page Page 7 of 8

- Dip Site
- Helispot
- Division Break
- Branch Break
- Drop Point
- Mobile Weather Unit
- Completed Dozer Line
- Completed Hand Line
- Completed Road as Line
- Fire Edge
- Contained Line
- State or Territory
- Main Route - Unimproved
- Local Road
- 4WD
- County or Equivalent



Name: NAD 1983 UTM Zone 11N



IAP MAP

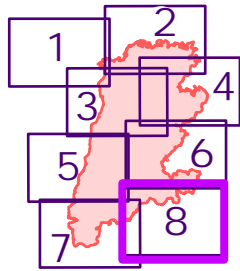
Summit Trail Fire

WA-COA-200087

18,530 Acres

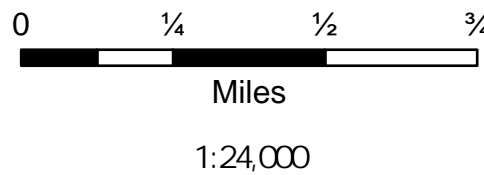


August 1, 2021



Page Page 8 of 8

- (X) Division Break
- Drop Point
- 🏠 Water Development or Draft Site
- Ⓜ Water Source
- Ⓞ Completed Dozer Line
- H Completed Hand Line
- R Completed Road as Line
- 🔴 Fire Edge
- ▬ Contained Line
- ▭ State or Territory
- ▬ Main Route - Improved
- ▬ Main Route - Unimproved
- ▬ Local Road
- ▭ County or Equivalent



Name: NAD 1983 UTM Zone 11N

