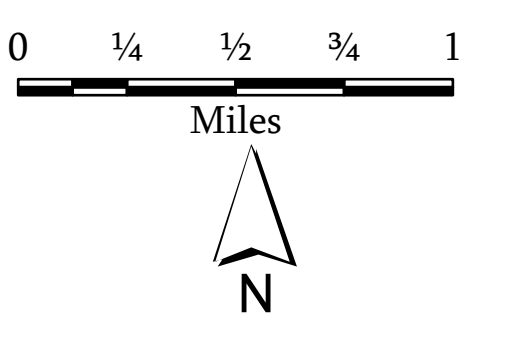
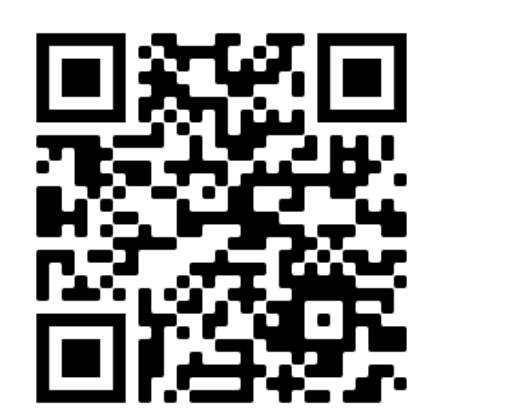
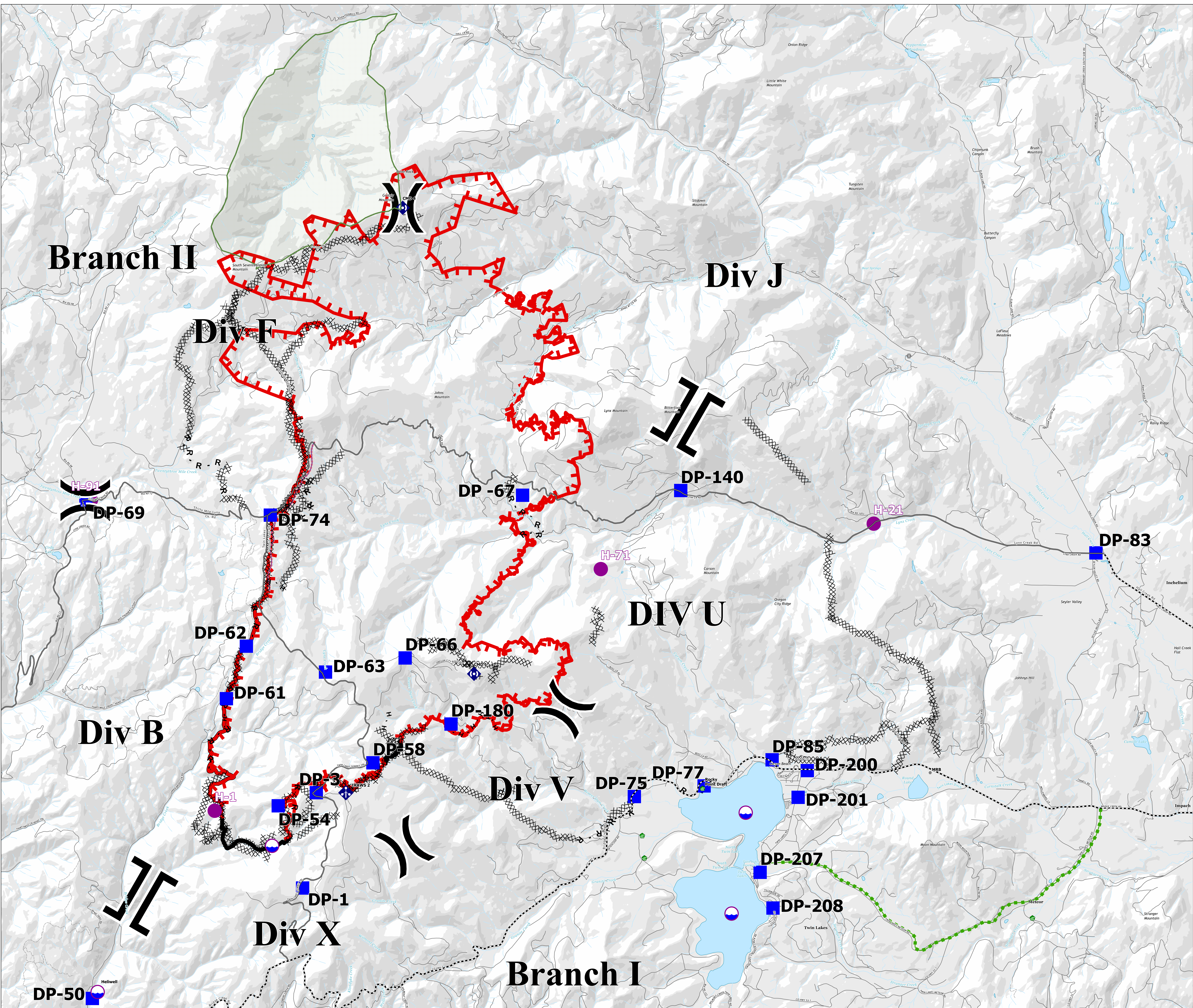




22,305 acres on 08/01/2021 at 1944

- Dip Site
- Helispot
- ⌘ Division Break
- ⌘ Branch Break
- Drop Point
- Camp
- Comm Tower
- Bridge
- Water Development or Draft Site
- ◆ Mobile Weather Unit
- ◆ Repeater
- ⊗ Completed Dozer Line
- ⊗ Completed Hand Line
- ⊗ Completed Road as Line
- Other
- Escape Route
- Retardant Drop
- Fire Edge
- Contained Line
- Local Road
- 4WD
- Wilderness Area
- Main Route
- Main Route, Condition
- Main Route - Improved
- Main Route - Unimproved



1:28,000

NAD 1983 UTM Zone 11N