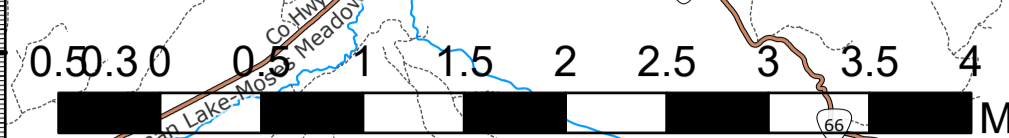
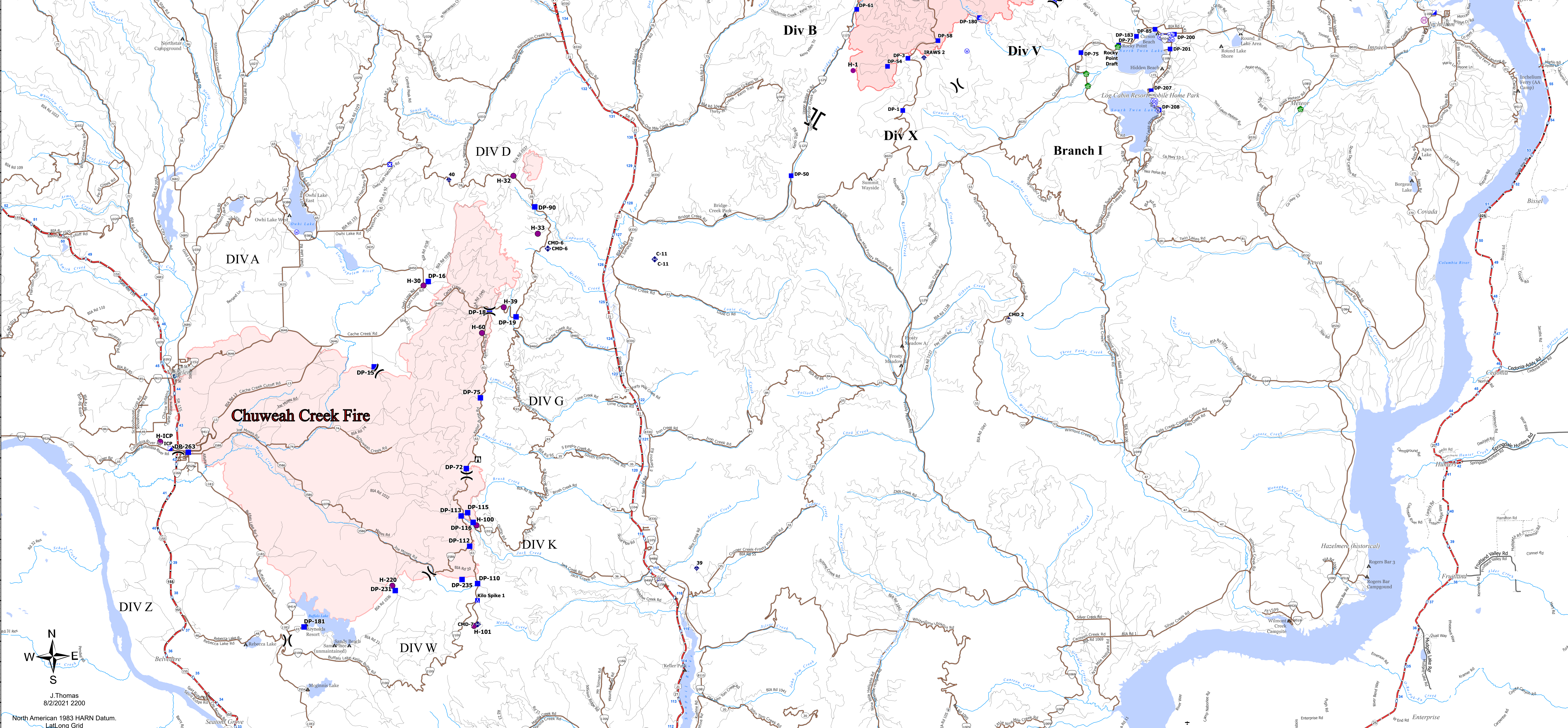


Transportation Map
Summit Trail Fire
WACOA-200087
08/03/2021 day
Approx 22,967 ac at
August 2, 2021

Chuweah Creek Fire
WACOA-200084
08/03/2021 day
Approx 98,702 ac at
July 30, 2021



- Helispot
- Repeater
- Water Source
- Camp_Grounds
- CTCR_EMS_Stations
- CTCR_Lookouts
- ICP
- Drop Point
- Camp
- Lookout
- Bridge
- Water Development or Draft Site
- Mobile Weather Unit
- Repeater
- Safety Zone
- Water Source
- GNISS Populated Place
- Helispot
- Division Break
- Branch Break
- ICP
- Drop Point
- Camp
- Lookout
- Mobile Weather Unit
- Repeater
- Water Source
- Chuweah Creek Fire
- City / Town
- Primary Road
- Light-Duty Road
- Unimproved Road
- Label_Point_Chuweah



J.Thomas
8/2/2021 2200
North American 1983 HARN Datum.
LatLong Grid