

IAP MAP Summit Trail Fire

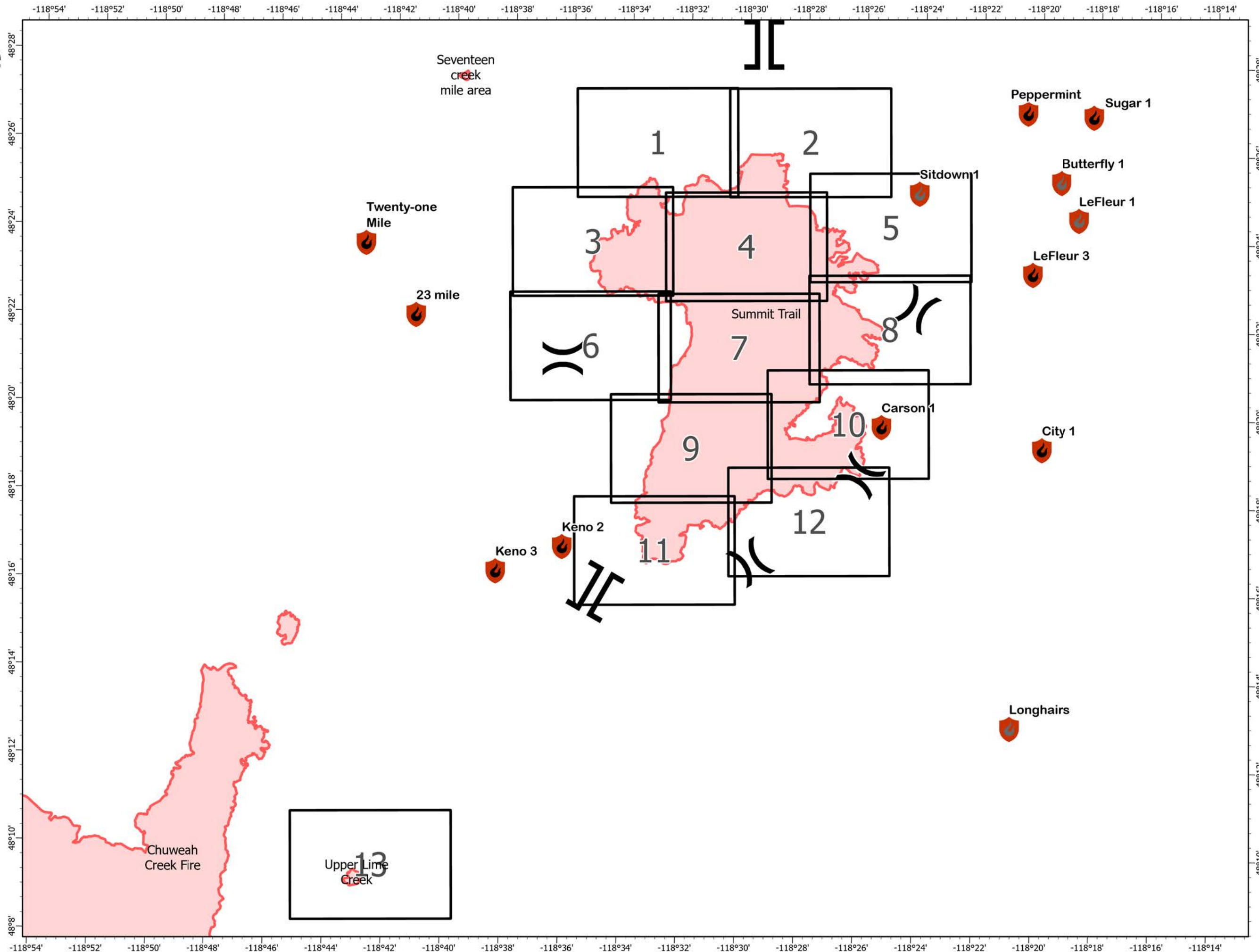
WA-COA-200087

28,193 Acres



August 8, 2021

- New Starts
- Containment
 - Controlled
 - Out
- Assignment Breaks
 - Division Break
 - Branch Break
- Event Polygon
 - Polygon Type
 - Wildfire Daily Fire Perimeter



1:150,000
NAD 1983
UTM 11N

IAP MAP

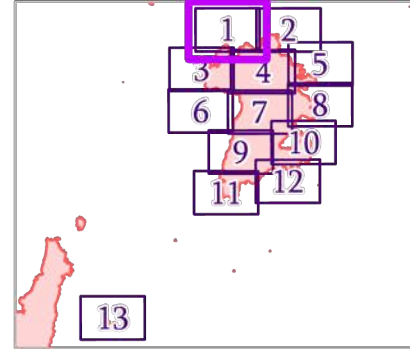
Summit Trail Fire

WA-COA-200087

28,193 Acres

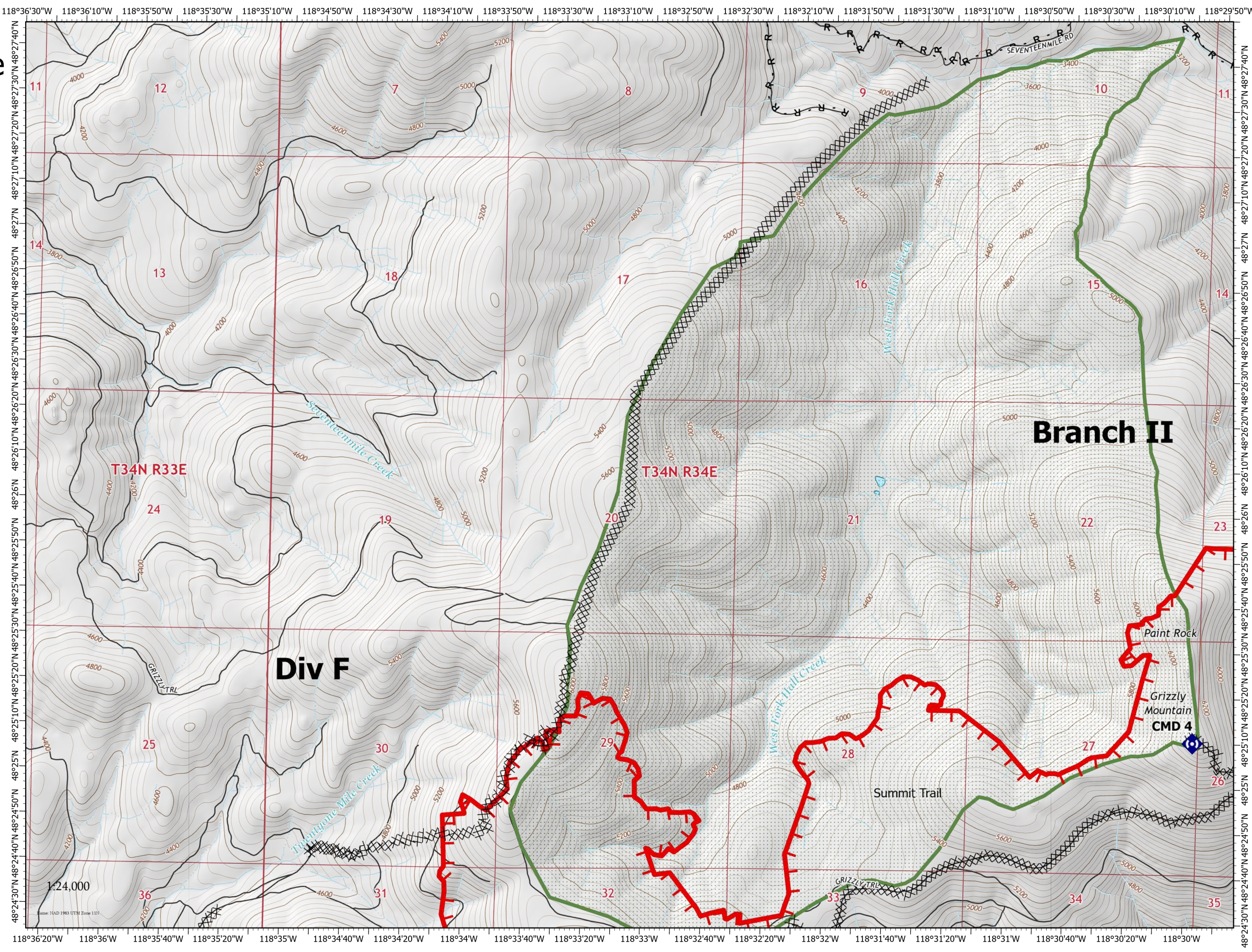
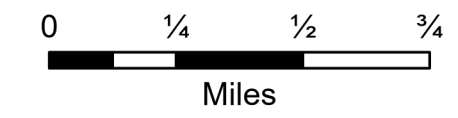


August 8, 2021



Page 1 of 13

- Repeater
- Completed Dozer Line
- Completed Road as Line
- Fire Edge
- Wildfire Daily Fire Perimeter
- TNM Derived Names
- State or Territory
- Local Road
- County or Equivalent
- Wilderness Area



Branch II

Div F

T34N R33E

T34N R34E

Paint Rock

Grizzly Mountain
CMD 4

Summit Trail

1:24,000

Source: 19AD 1983 USGS Zone 1111

IAP MAP

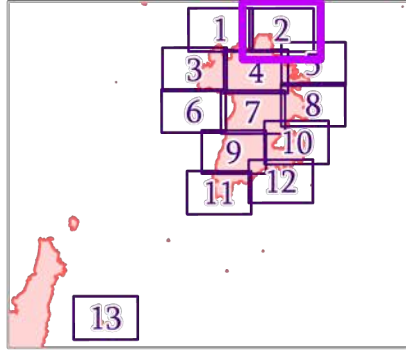
Summit Trail Fire

WA-COA-200087

28,193 Acres

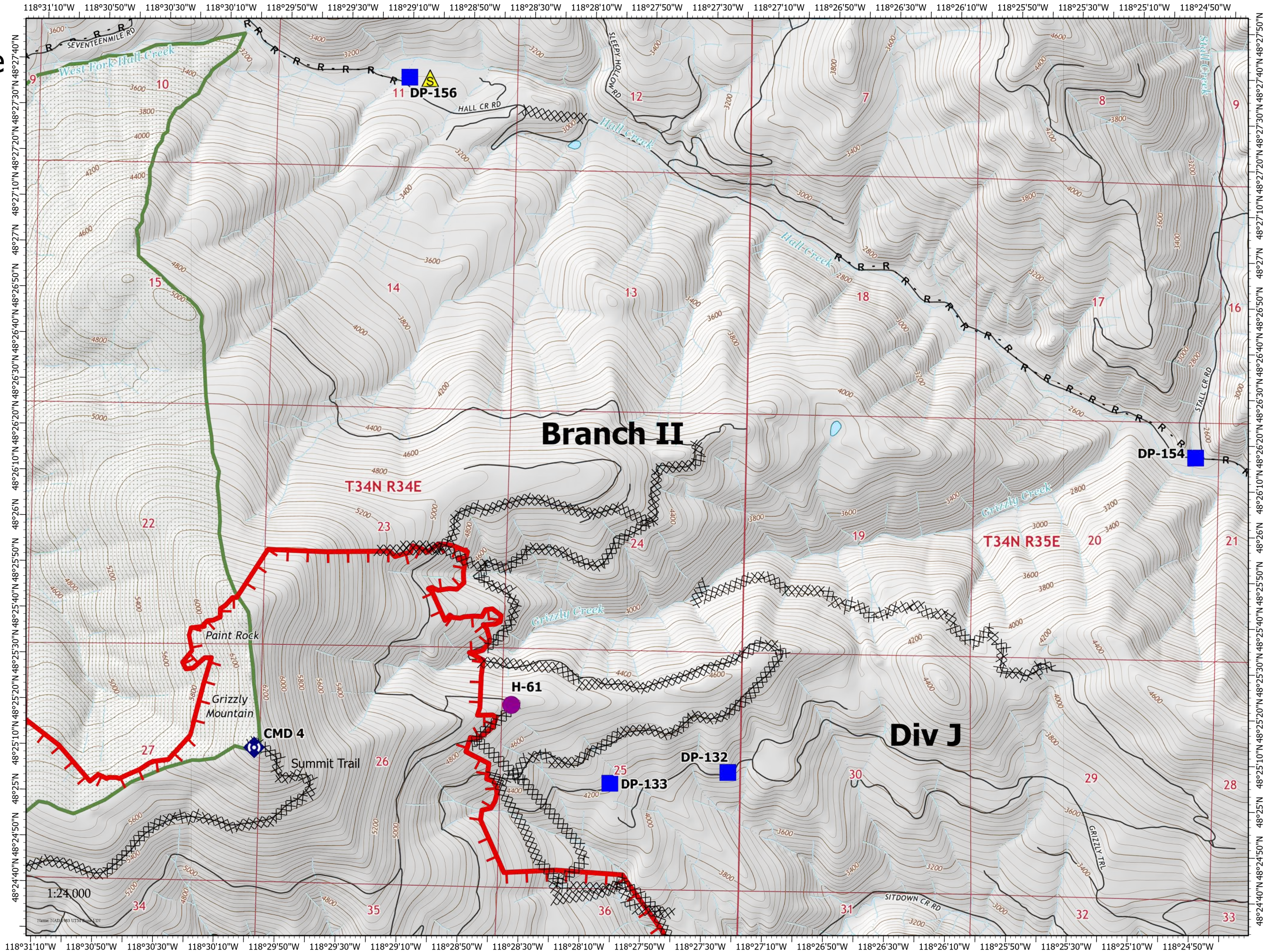


August 8, 2021



Page 2 of 13

- Helispot
- Drop Point
- ◆ Repeater
- ▲ Safety Zone
- ⊗ Completed Dozer Line
- R Completed Road as Line
- Fire Edge
- Wildfire Daily Fire Perimeter
- TNM Derived Names
- State or Territory
- Local Road
- ▭ County or Equivalent
- Wilderness Area



IAP MAP

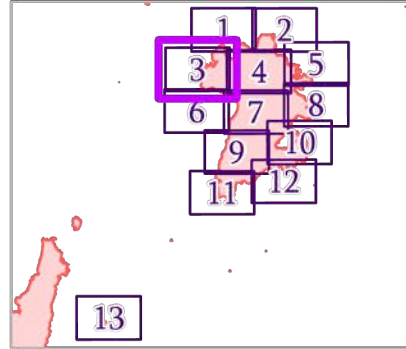
Summit Trail Fire

WA-COA-200087

28,193 Acres



August 8, 2021

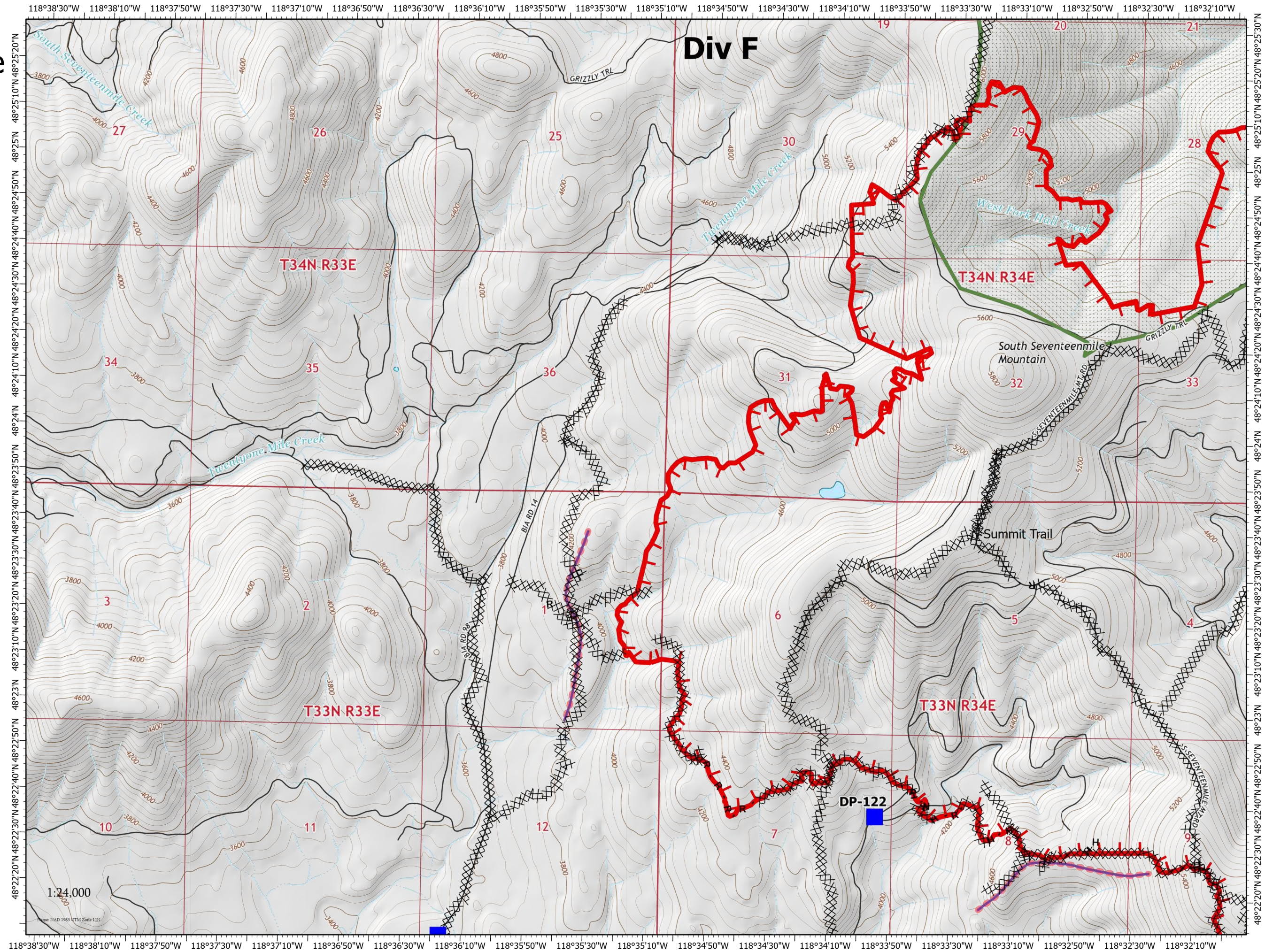


Page 3 of 13

- Drop Point
- Completed Dozer Line
- Completed Hand Line
- Completed Road as Line
- Retardant Drop
- Fire Edge
- Wildfire Daily Fire Perimeter
- TNM Derived Names
- State or Territory
- Local Road
- County or Equivalent
- Wilderness Area



Miles



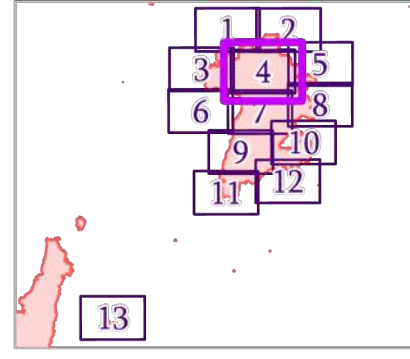
IAP MAP

Summit Trail Fire

WA-COA-200087
28,193 Acres

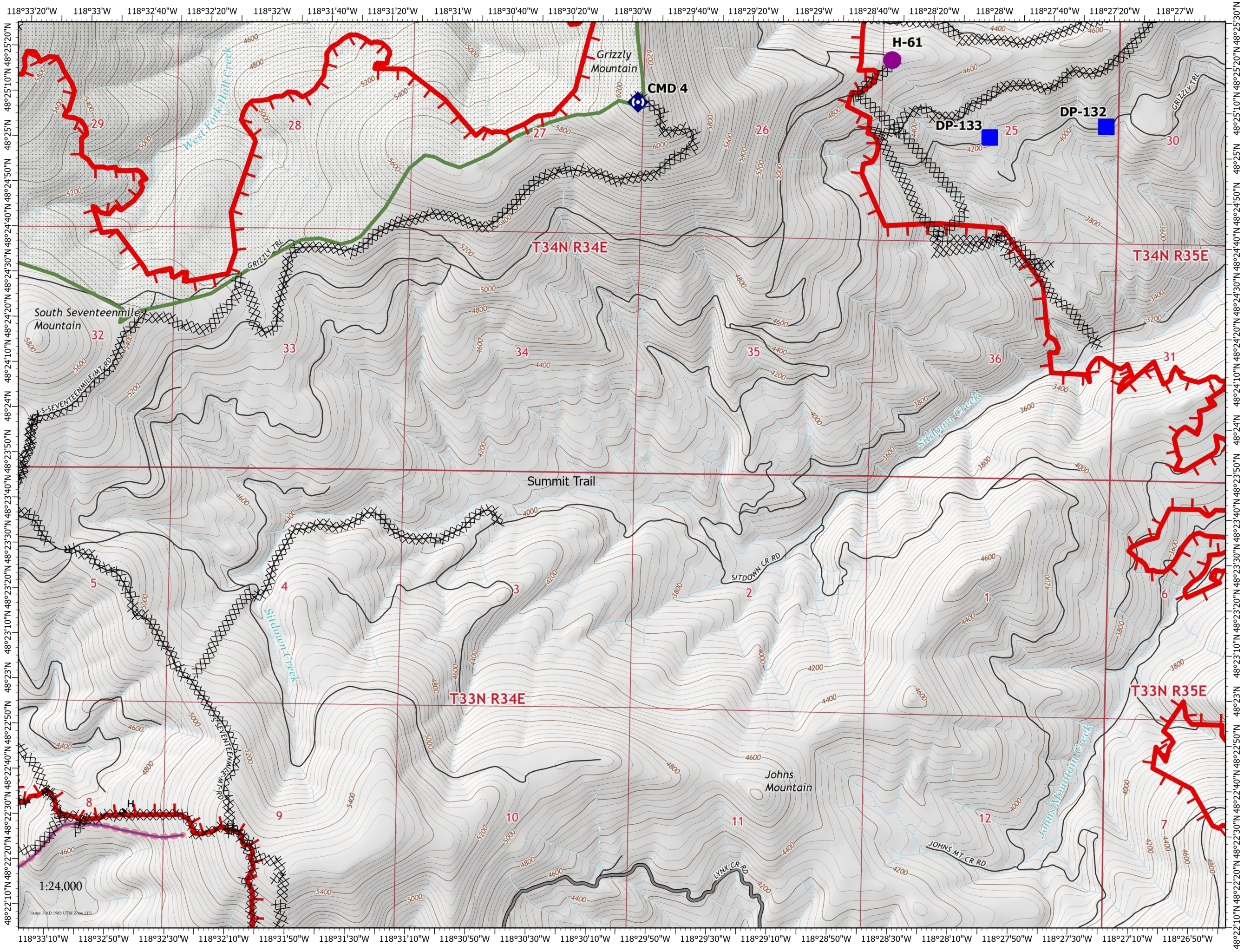
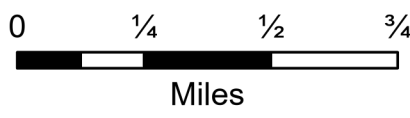


August 8, 2021



Page 4 of 13

- Helispot
- Drop Point
- ⬢ Repeater
- ⊗ Completed Dozer Line
- H Completed Hand Line
- R Completed Road as Line
- Retardant Drop
- ┌ Fire Edge
- Wildfire Daily Fire Perimeter
- TNM Derived Names
- State or Territory
- Main Route - Unimproved
- Local Road
- County or Equivalent
- Wilderness Area



IAP MAP

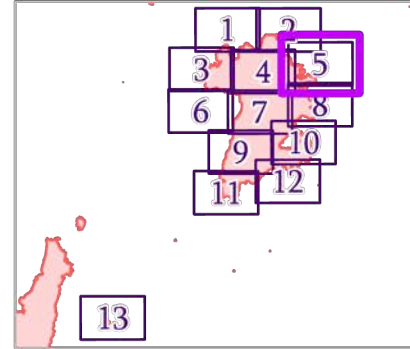
Summit Trail Fire

WA-COA-200087

28,193 Acres

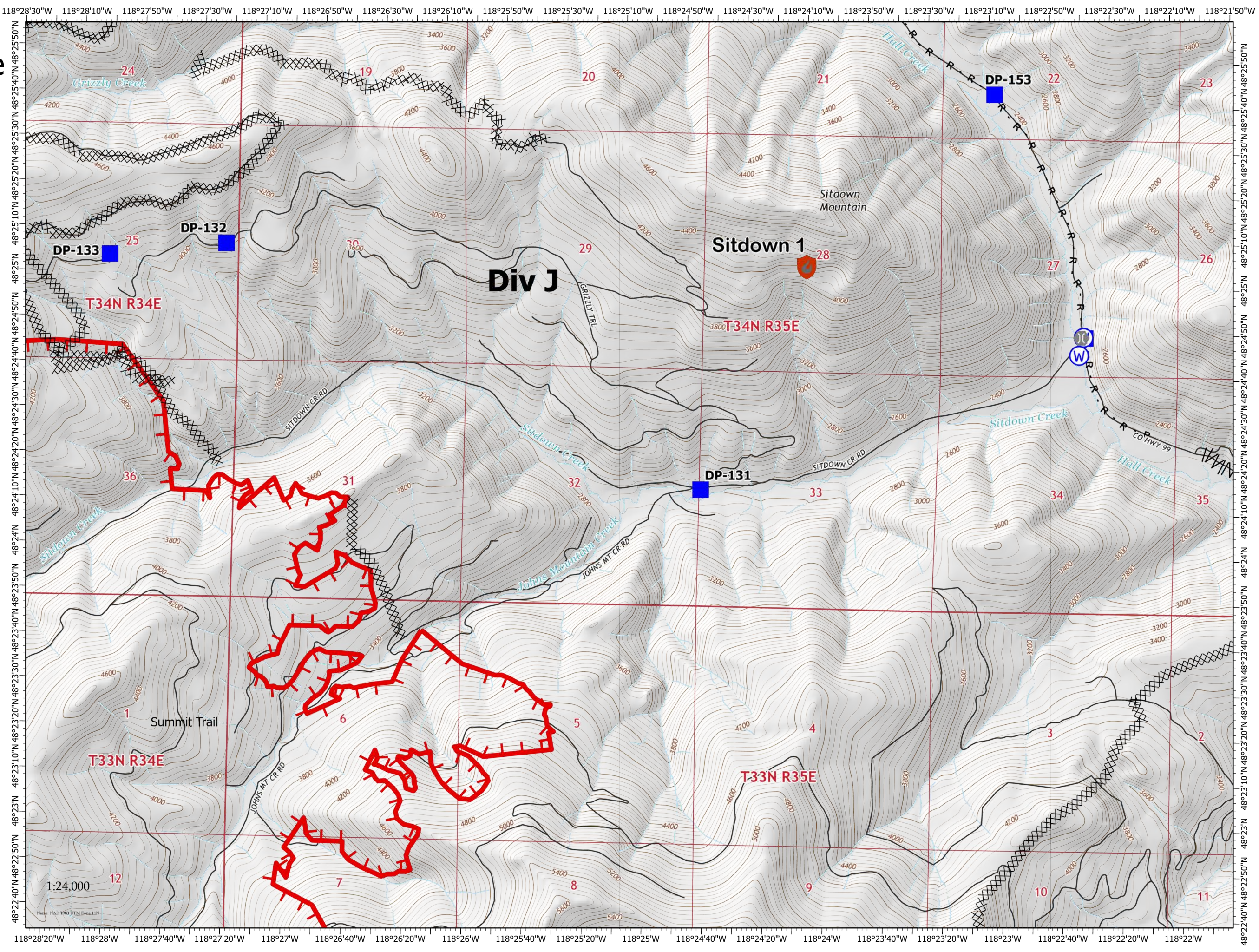
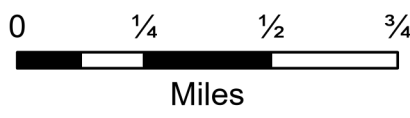


August 8, 2021



Page 5 of 13

- New Starts
- Containment
- Controlled
- Helispot
- Drop Point
- Bridge
- Water Source
- Completed Dozer Line
- Completed Fuel Break
- Completed Road as Line
- Fire Edge
- Wildfire Daily Fire Perimeter
- TNM Derived Names
- State or Territory
- Local Road
- County or Equivalent



IAP MAP

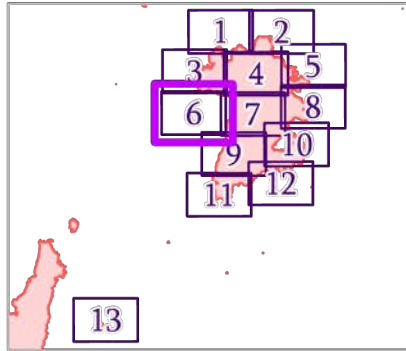
Summit Trail Fire

WA-COA-200087

28,193 Acres



August 8, 2021

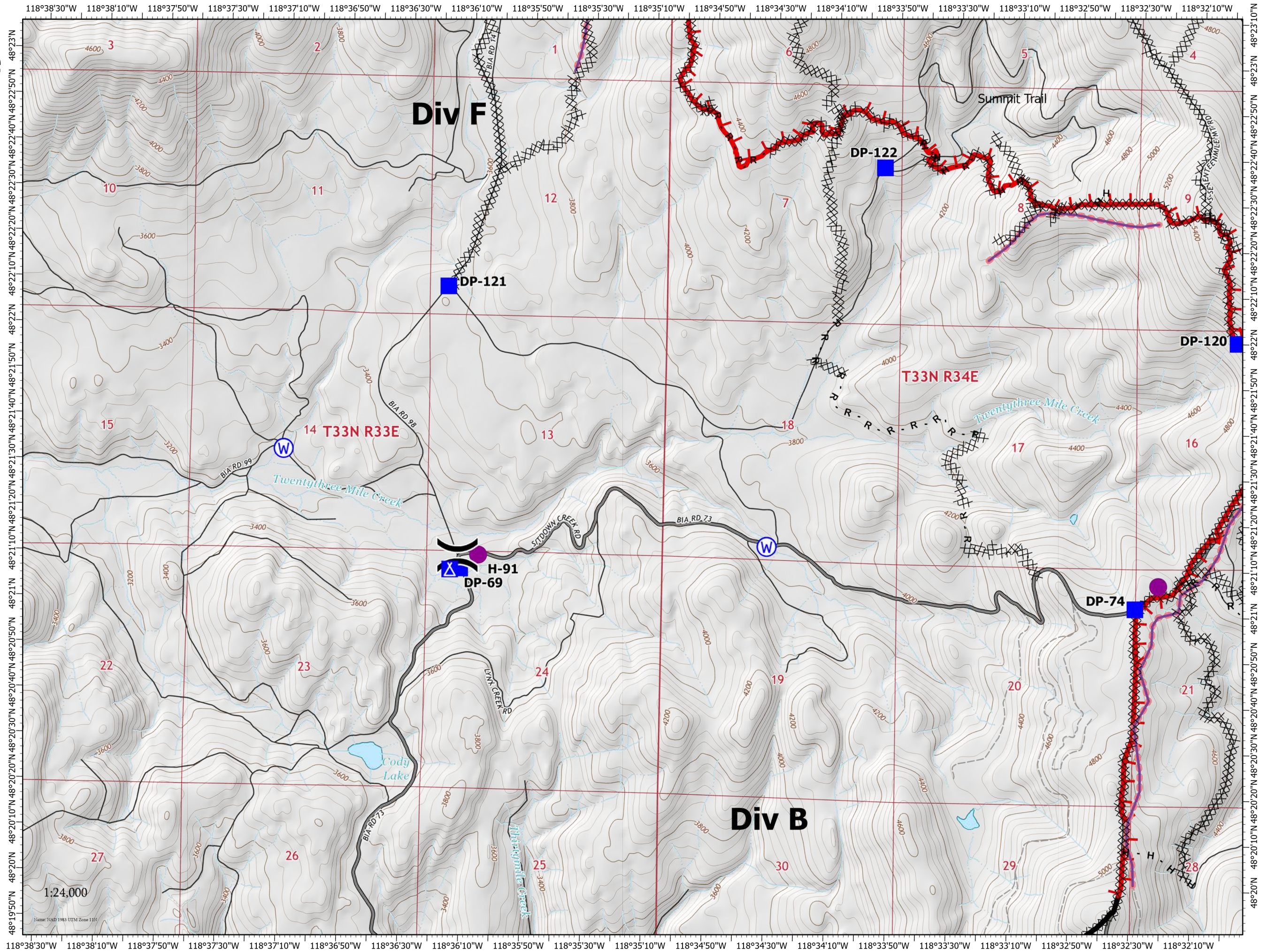


Page 6 of 13

- Helispot
-) Division Break
- Drop Point
- △ Camp
- ⊙ Water Source
- ⊗ Completed Dozer Line
- H Completed Hand Line
- R Completed Road as Line
- Retardant Drop
- ┃ Fire Edge
- ▬ Contained Line
- ▬ Wildfire Daily Fire Perimeter
- State or Territory
- Main Route - Unimproved
- Local Road
- 4WD
- County or Equivalent



Miles



IAP MAP

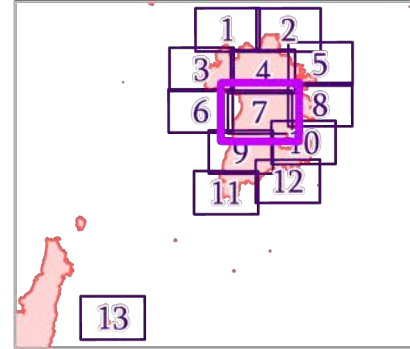
Summit Trail Fire

WA-COA-200087

28,193 Acres

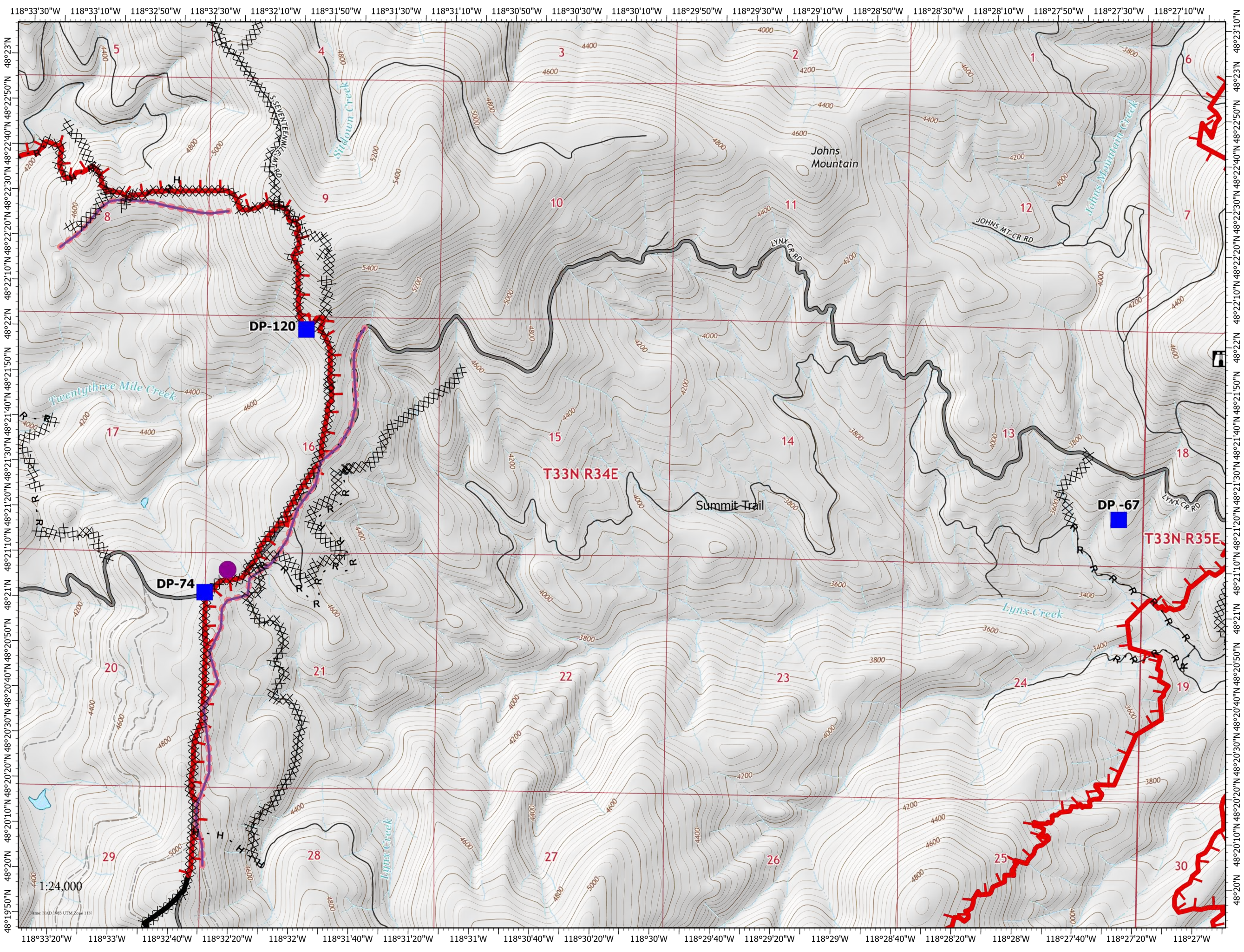


August 8, 2021



Page 7 of 13

- Helispot
- Drop Point
- Lookout
- Completed Dozer Line
- H** Completed Hand Line
- R** Completed Road as Line
- Retardant Drop
- Fire Edge
- Contained Line
- Wildfire Daily Fire Perimeter
- TNM Derived Names
- State or Territory
- Main Route - Unimproved
- Local Road
- 4WD
- County or Equivalent



IAP MAP

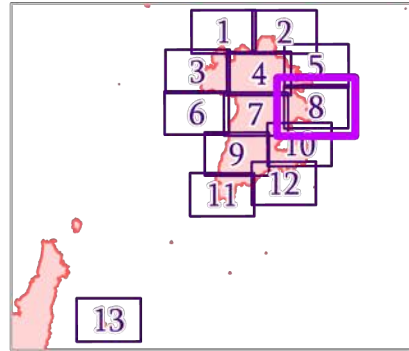
Summit Trail Fire

WA-COA-200087

28,193 Acres

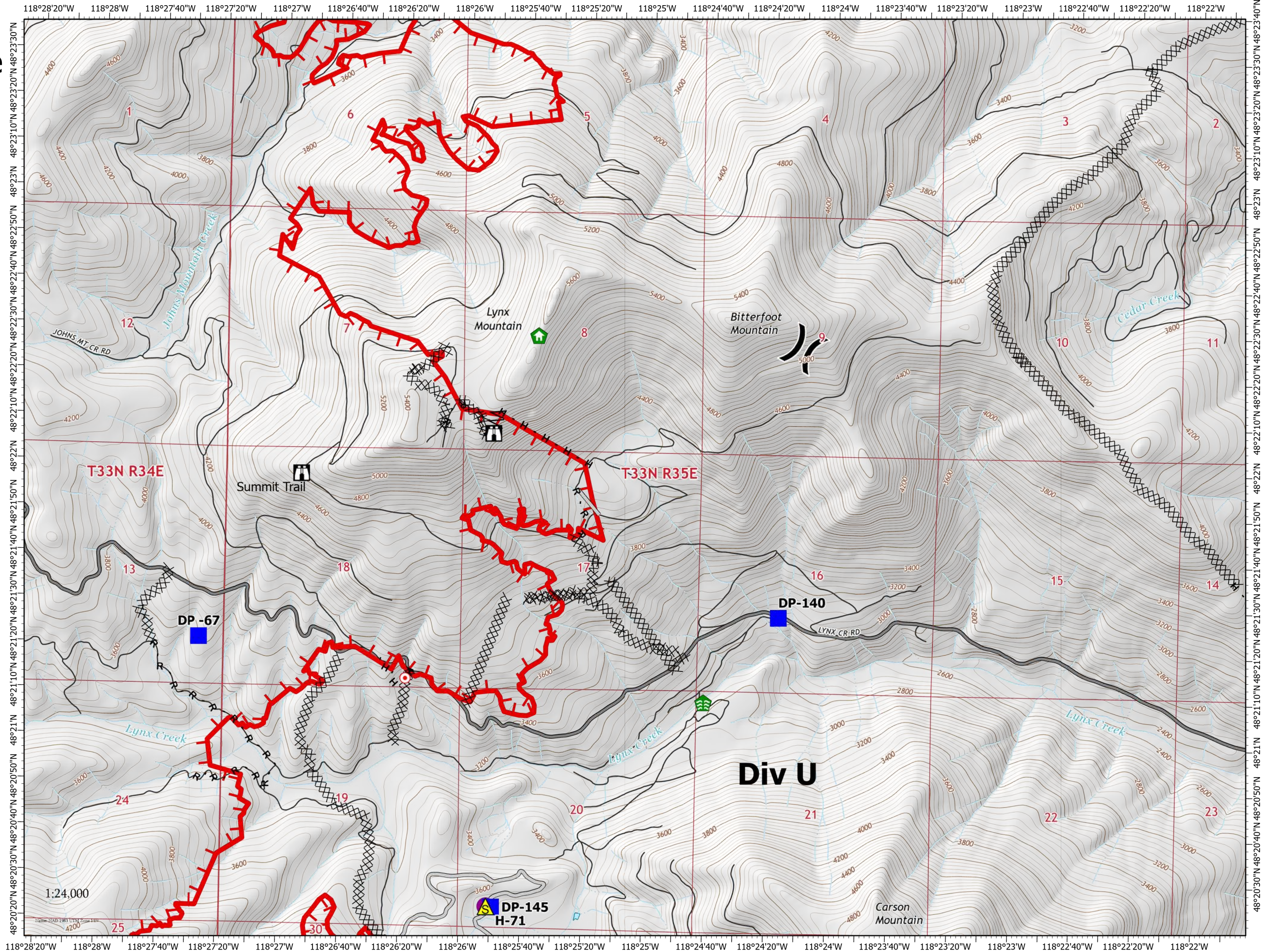


August 8, 2021



Page 8 of 13

- Helispot
-) Division Break
- Drop Point
- Lookout
- Hot Spot - Spot Fire
- Structure Wrap
- Stream Crossing
- Safety Zone
- Completed Dozer Line
- Completed Fuel Break
- Completed Hand Line
- Completed Road as Line
- Access or Improved Road
- Fire Edge
- Wildfire Daily Fire Perimeter
- TNM Derived Names
- State or Territory
- Main Route - Unimproved
- Local Road
- County or Equivalent



IAP MAP

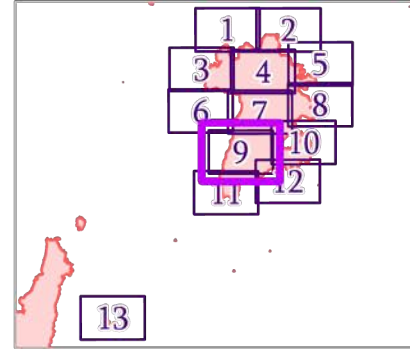
Summit Trail Fire

WA-COA-200087

28,193 Acres

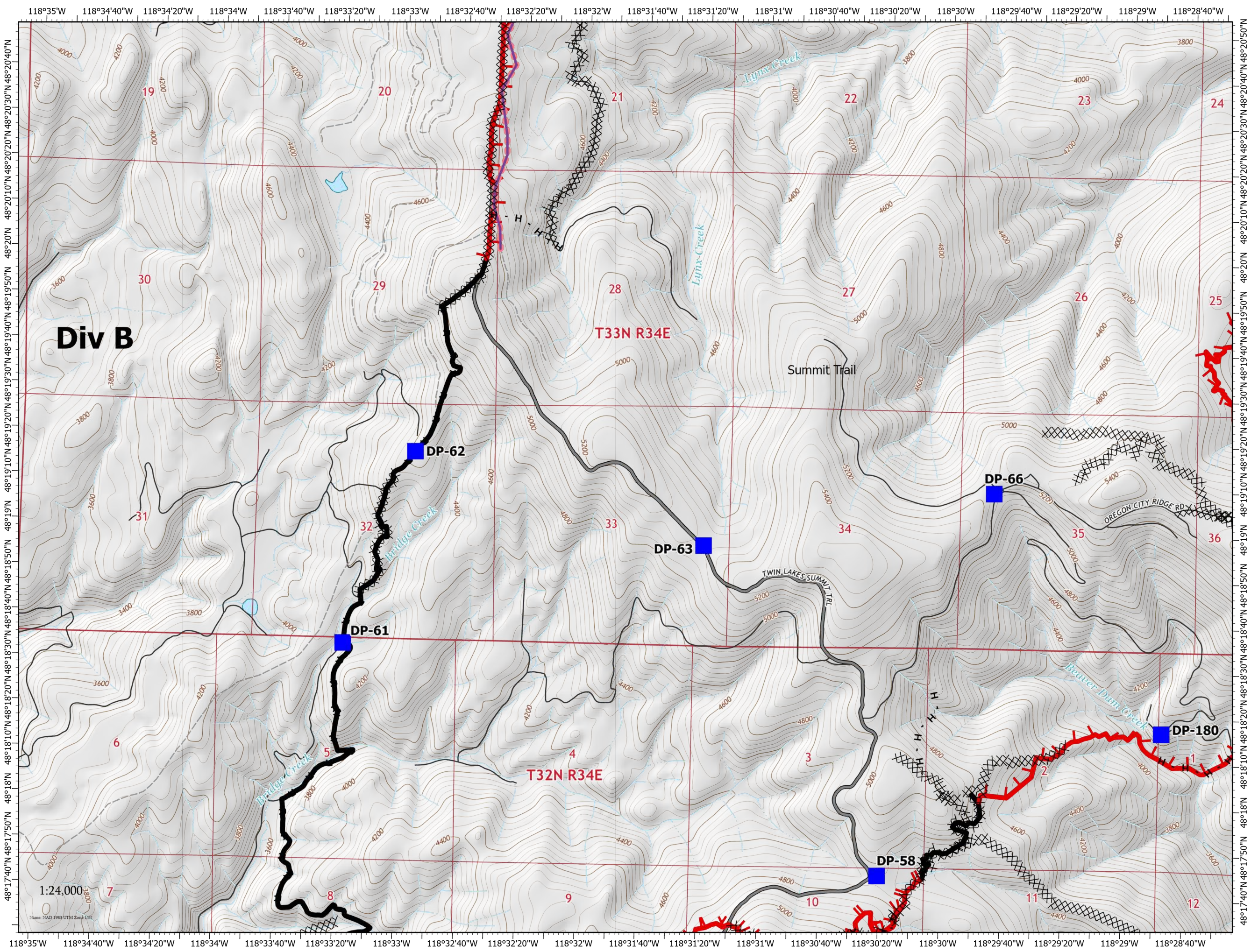
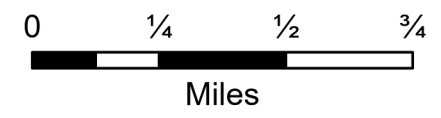


August 8, 2021



Page 9 of 13

- Drop Point
- Repeater
- Water Source
- Completed Dozer Line
- Completed Hand Line
- Completed Road as Line
- Retardant Drop
- Fire Edge
- Contained Line
- Wildfire Daily Fire Perimeter
- State or Territory
- Main Route - Unimproved
- Local Road
- 4WD
- County or Equivalent



1:24,000
NAD 1983 UTM Zone 11N

IAP MAP

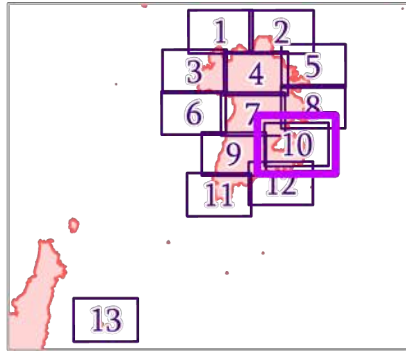
Summit Trail Fire

WA-COA-200087

28,193 Acres

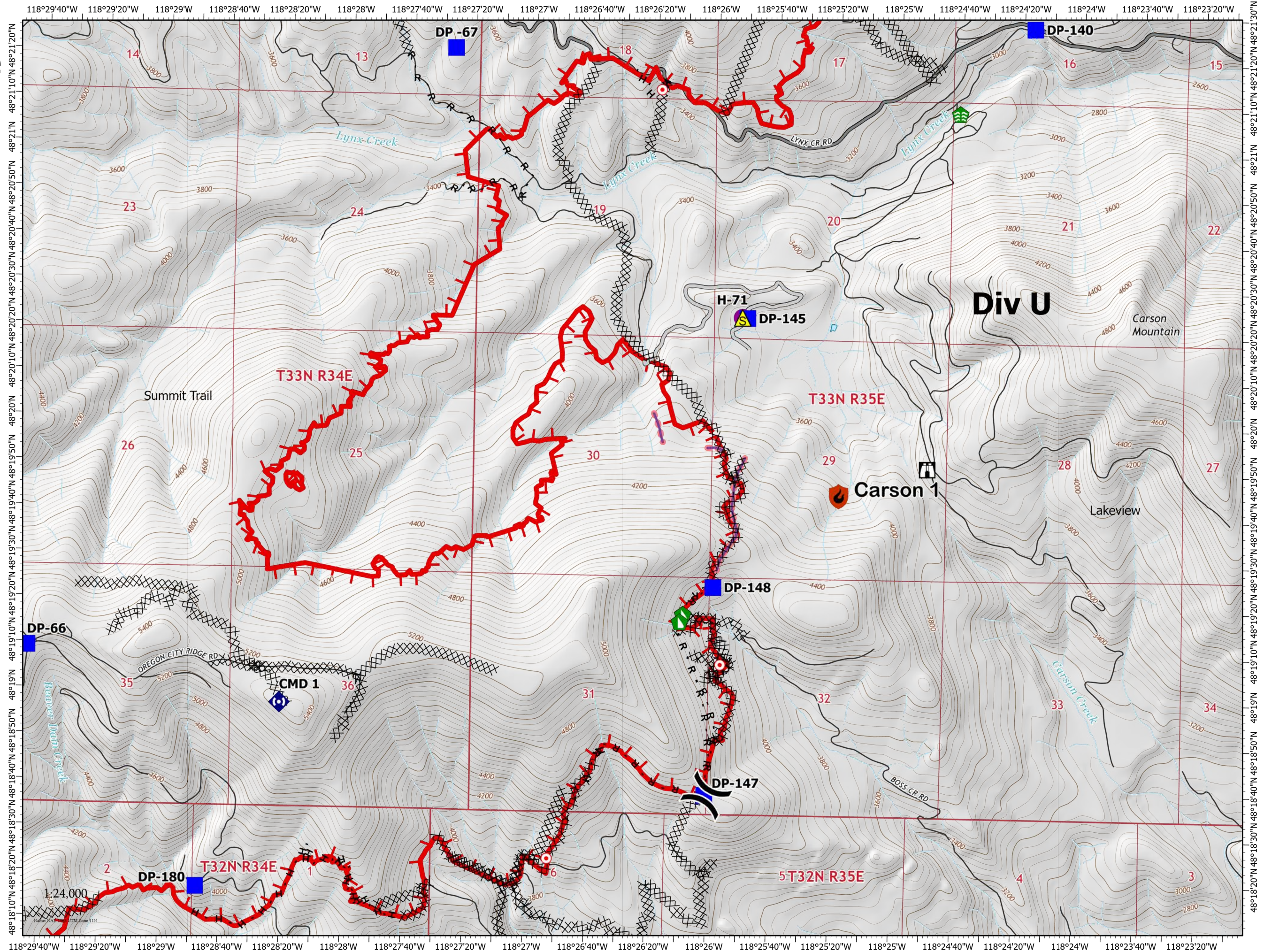


August 8, 2021



Page 10 of 13

- New Starts
- Containment
- Out
- Helispot
- Division Break
- Drop Point
- Lookout
- Hot Spot - Spot Fire
- Stream Crossing
- Dozer Push
- Repeater
- Safety Zone
- Completed Dozer Line
- Completed Hand Line
- Completed Road as Line
- Access or Improved Road
- Retardant Drop
- Fire Edge
- Wildfire Daily Fire Perimeter
- TNM Derived Names
- State or Territory
- Main Route - Unimproved



IAP MAP

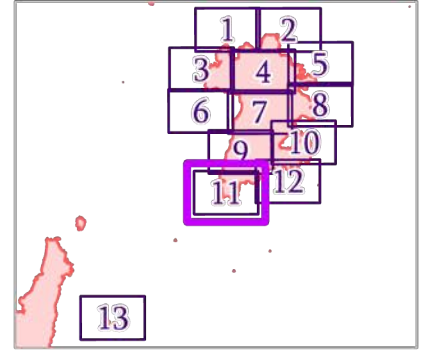
Summit Trail Fire

WA-COA-200087

28,193 Acres

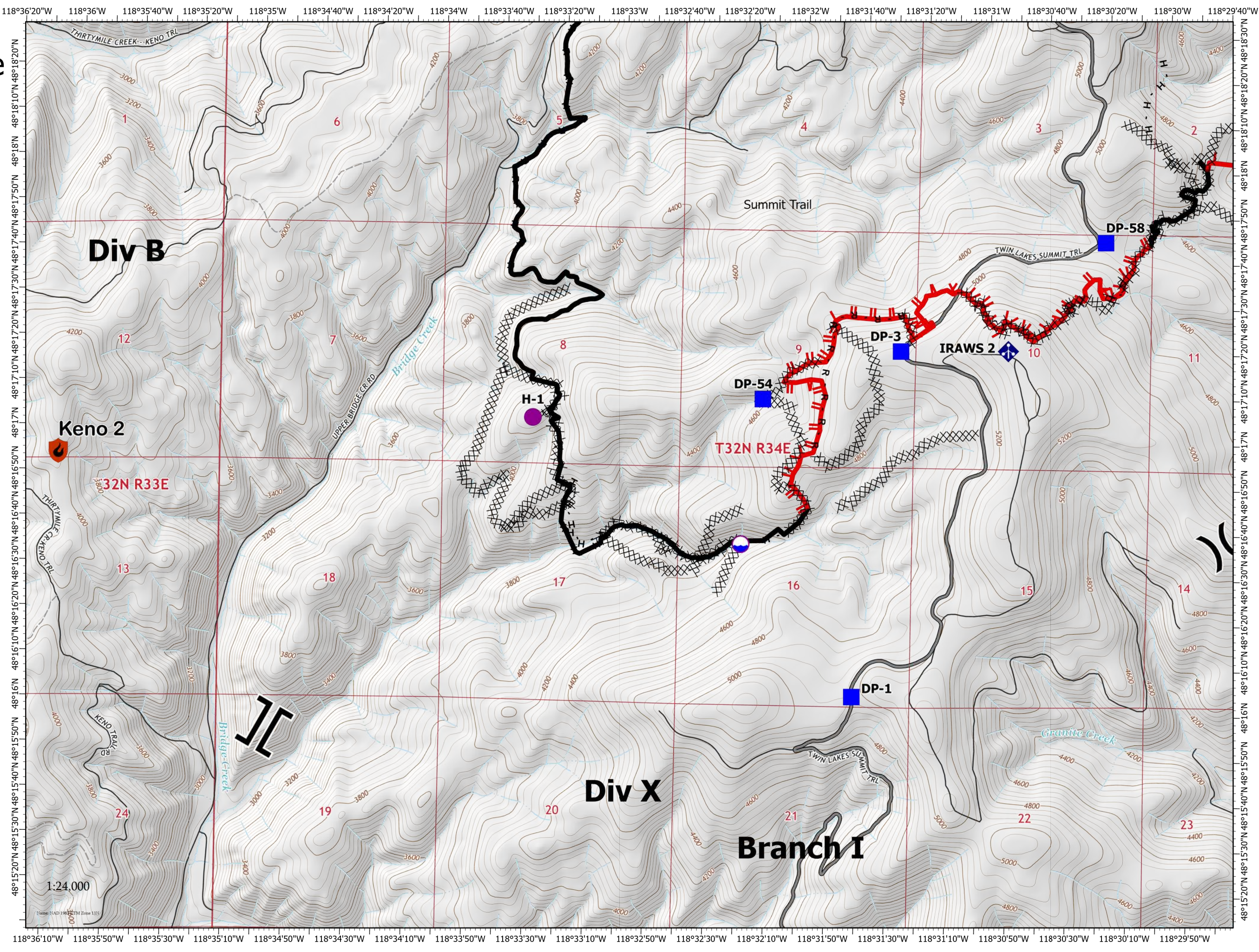


August 8, 2021



Page 11 of 13

- Dip Site
- Helispot
- Division Break
- Branch Break
- Drop Point
- Mobile Weather Unit
- Completed Dozer Line
- Completed Hand Line
- Completed Road as Line
- Fire Edge
- Contained Line
- Wildfire Daily Fire Perimeter
- State or Territory
- Main Route - Unimproved
- Local Road
- 4WD
- County or Equivalent



1:24,000

IAP MAP

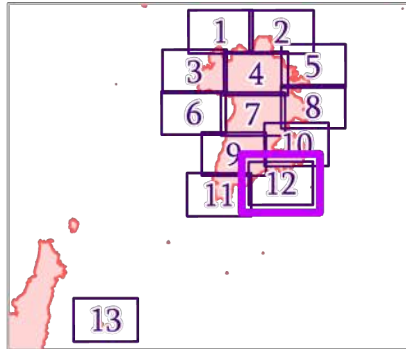
Summit Trail Fire

WA-COA-200087

28,193 Acres

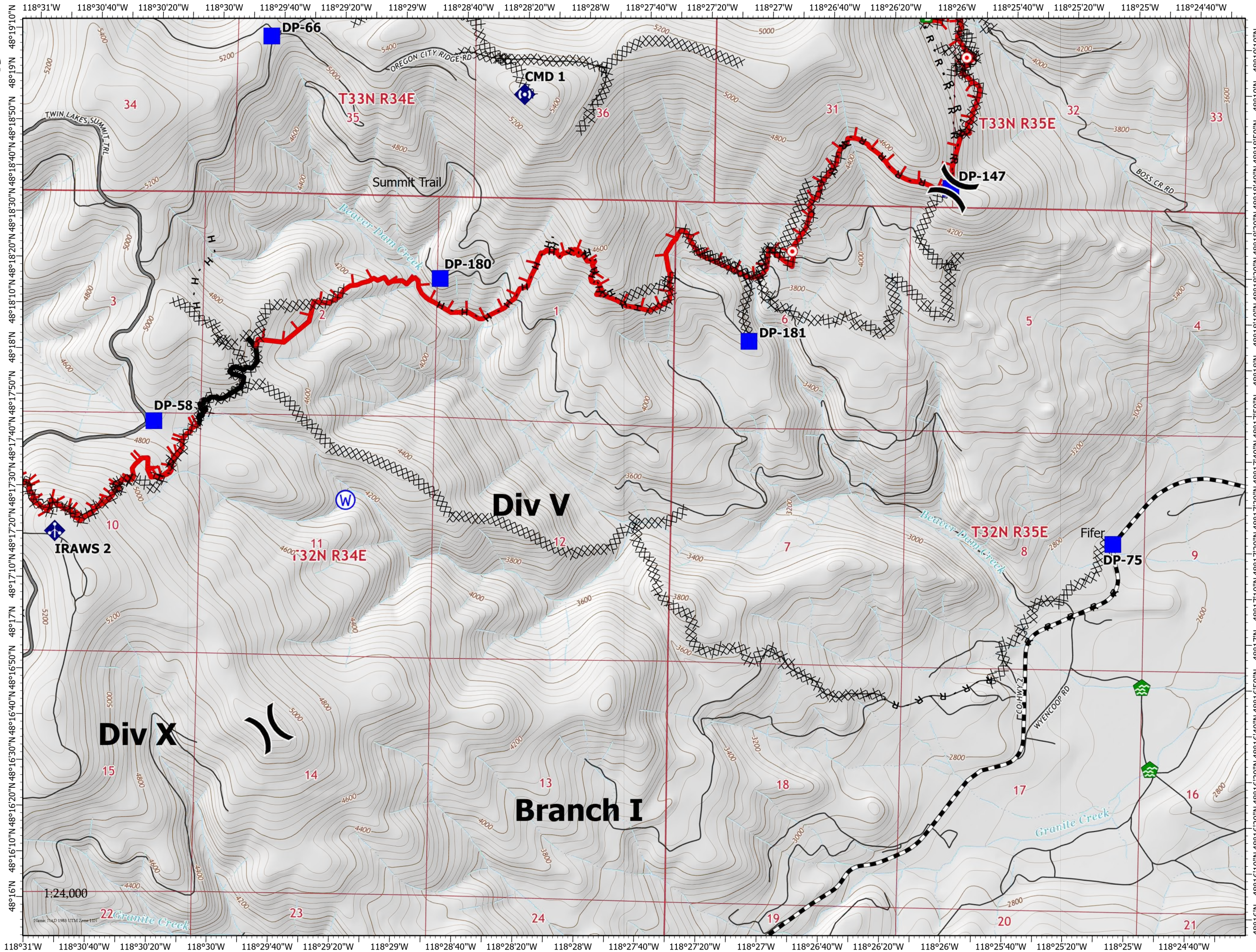


August 8, 2021



Page 12 of 13

- Division Break
- Drop Point
- Hot Spot - Spot Fire
- Water Development or Draft Site
- Dozer Push
- Mobile Weather Unit
- Repeater
- Water Source
- Completed Dozer Line
- Completed Hand Line
- Completed Road as Line
- Fire Edge
- Contained Line
- Wildfire Daily Fire Perimeter
- State or Territory
- Main Route - Improved
- Main Route - Unimproved
- Local Road
- County or Equivalent



IAP MAP

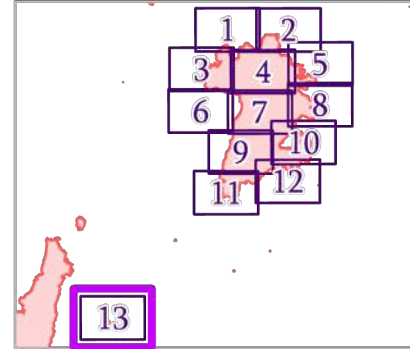
Summit Trail Fire

WA-COA-200087

28,193 Acres



August 8, 2021



Page 13 of 13

- Staging Area
- Bridge
- Fire Edge
- Wildfire Daily Fire Perimeter
- State or Territory
- Main Route - Improved
- Local Connector
- Local Road
- County or Equivalent

