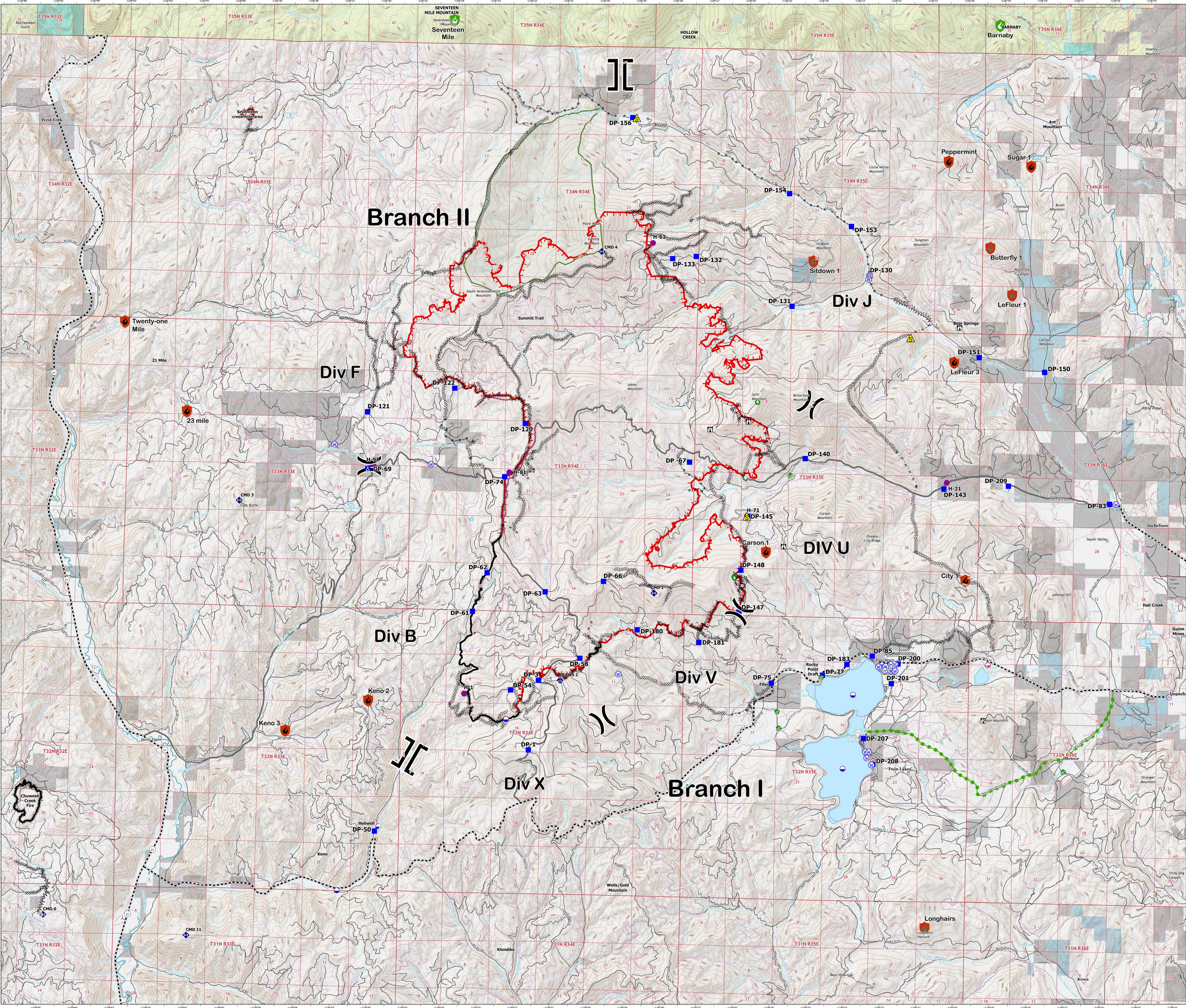




28,193 acres on 08/07/2021 at 2000



- Containment
  - Contained
  - Controlled
  - Out
  - FS
- Dip Site
- Mobile Retardant Base
- Helispot
- Helibase
- Division Break
- Branch Break
- Drop Point
- Camp
- Lookout
- Hot Spot - Spot Fire
- Comm Tower
- Bridge
- Water Development or Draft Site
- Structure Wrap
- Stream Crossing
- Dozer Push
- Mobile Weather Unit
- Repeater
- Safety Zone
- Water Source
- Completed Dozer Line
- Completed Fuel Break
- Completed Hand Line
- Completed Road as Line
- Access or Improved Road
- Other
- Escape Route
- Retardant Drop
- Fire Edge
- Contained Line
  - Wildfire Daily Fire Perimeter
  - Main Route - Improved
  - Main Route - Unimproved
  - Local Road
  - 4WD
  - Trail
- Wilderness Area
- Parcel Ownership
  - Private
  - Colville Confederated Tribes
  - Indian Allotment Trust Lands
  - US Forest Service
  - WA DNR
- CTCR Non-Driveable Roads Status
  - Driveable
  - Not Driveable



0 1/4 1/2 3/4 1  
Miles



1:38,000

NAD 1983 UTM Zone 11N