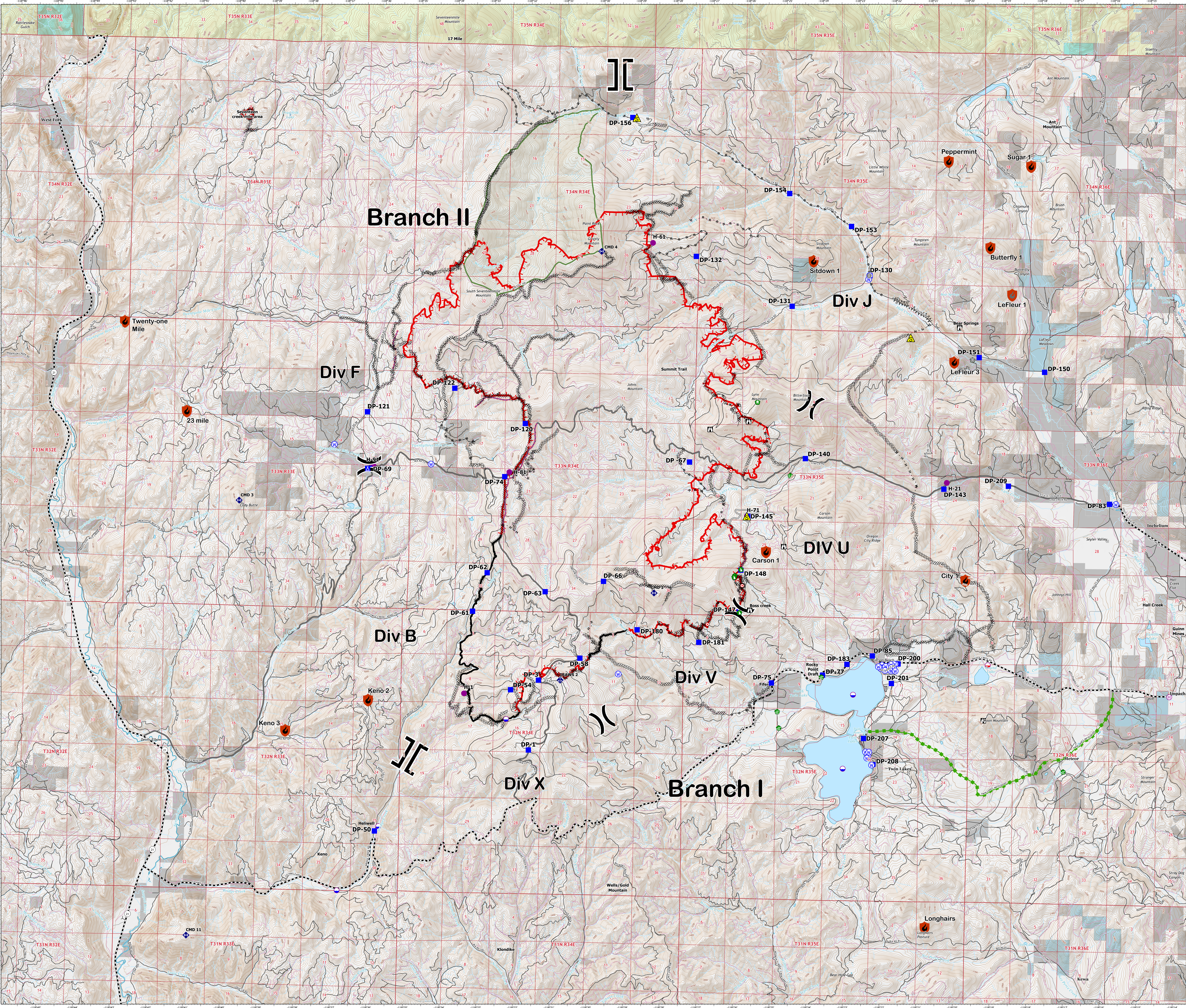




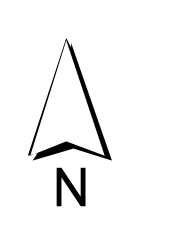
28,236 acres on 08/09/2021 at 1200



- Containment**
- Controlled
 - Out
 - Dip Site
 - Mobile Retardant Base
 - Helispot
 - Helibase
 - Division Break
 - Branch Break
 - Drop Point
 - Camp
 - Lookout
 - Hot Spot - Spot Fire
 - Comm Tower
 - Bridge
 - Water Development or Draft Site
 - Structure Wrap
 - Stream Crossing
 - Dozer Push
 - Mobile Weather Unit
 - Repeater
 - Safety Zone
 - Water Source
 - Completed Dozer Line
 - Completed Fuel Break
 - Completed Hand Line
 - Completed Road as Line
 - Access or Improved Road
 - Other
 - Escape Route
 - Retardant Drop
 - Fire Edge
 - Contained Line
 - Wildfire Daily Fire Perimeter
 - Main Route - Improved
 - Main Route - Unimproved
 - Local Road
 - 4WD
 - Trail
 - Wilderness Area
- Parcel Ownership**
- PARCEL ANNO**
- Private
 - Colville Confederated Tribes
 - Indian Allotment Trust Lands
 - US Forest Service
 - WA DNR
- CTCR Non-Driveable Roads Status**
- Not Driveable



0 1/4 1/2 3/4 1
Miles



1:38,000

NAD 1983 UTM Zone 11N