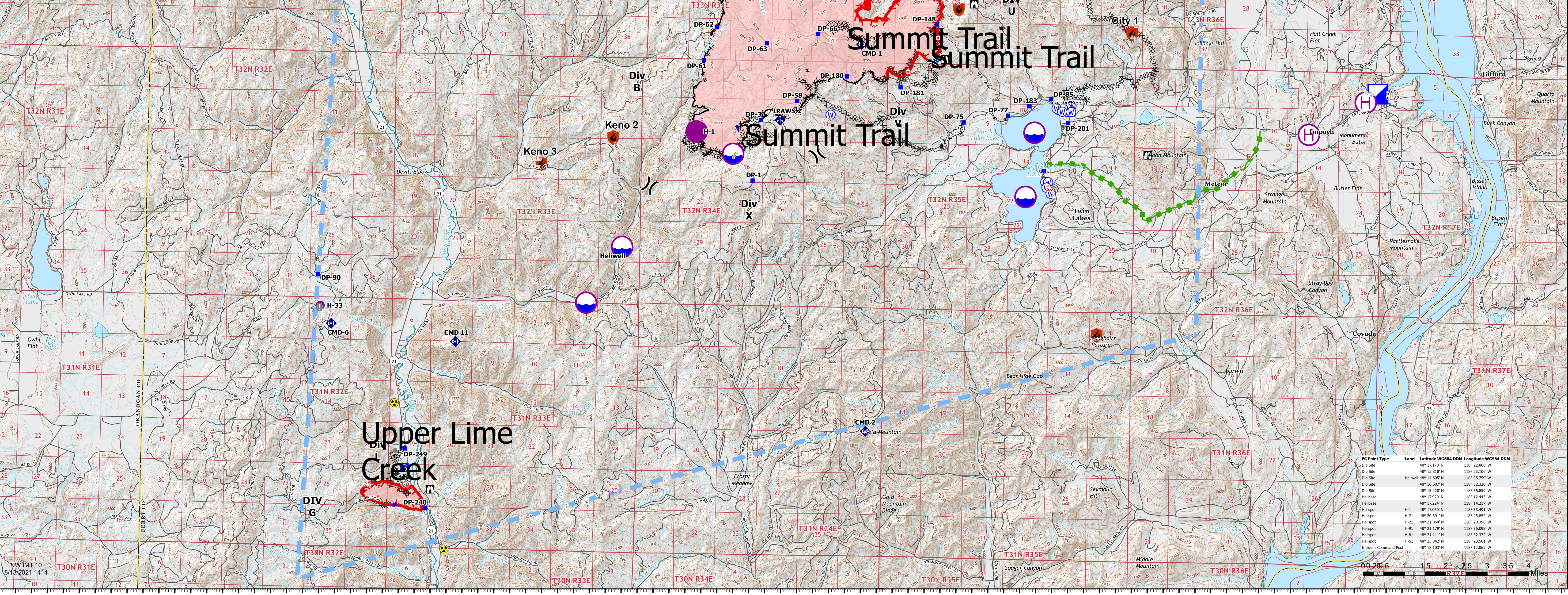


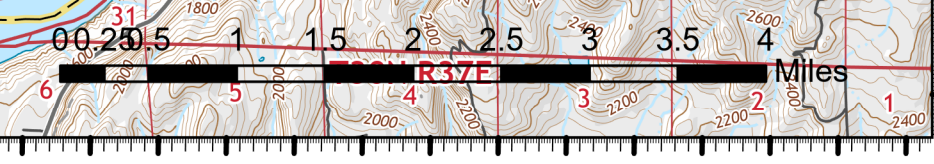
AirOps
 Summit Trail Fire Upper Lime Creek
 WA-COA-200087 WA-COA-200116
 August 13, 2021
 Summit Trail: 28,799 acres at 08/11/2021
 Upper Lime Creek: 376 acres at 08/12/2021



- Containment**
- Controlled
- Out
- Dip Site
- Hot Spot
- Value at Risk
- Other
- Bridge
- Repeater
- Safety Zone
- Hazard
- Water Source
- Completed Dozer Line
- Completed Fuel Break
- Completed Hand Line
- Planned Hand Line
- Planned Road as Line
- Access or Improved Road
- Other
- Escape Route
- Retardant Drop
- Temporary Flight Restriction
- Fire Edge
- Other
- Wildfire Daily Fire Perimeter
- Wilderness Area



VC Point Type	Label	Latitude WGS84 DDM	Longitude WGS84 DDM
Dip Site	H-1710	48° 17.170' N	118° 23.867' W
Dip Site	H-15181F	48° 15.181' N	118° 23.106' W
Dip Site	Hellwell	48° 14.605' N	118° 35.759' W
Dip Site	H-16407F	48° 16.407' N	118° 23.727' W
Dip Site	H-13420F	48° 13.420' N	118° 36.859' W
Dip Site	H-17920F	48° 17.920' N	118° 12.445' W
Helibase	H-13224F	48° 13.224' N	118° 14.217' W
Helibase	H-13066F	48° 13.066' N	118° 23.491' W
Helispot	H-1	48° 20.393' N	118° 25.852' W
Helispot	H-21	48° 21.064' N	118° 20.398' W
Helispot	H-91	48° 21.179' N	118° 36.098' W
Helispot	H-61	48° 21.113' N	118° 23.712' W
Helispot	H-61	48° 25.942' N	118° 28.541' W
Incident Command Post	H-18103F	48° 18.103' N	118° 12.065' W



118°55'W 118°54'W 118°53'W 118°52'W 118°51.01'W 118°50'W 118°49'W 118°48'W 118°47'W 118°46'W 118°45'W 118°44'W 118°43'W 118°42'W 118°41'W 118°40'W 118°39'W 118°38'W 118°37'W 118°36'W 118°35'W 118°34'W 118°33'W 118°32'W 118°31'W 118°30'W 118°29'W 118°28'W 118°27'W 118°26'W 118°25'W 118°24'W 118°23'W 118°22'W 118°21.01'W 118°20'W 118°19'W 118°18'W 118°17'W 118°16'W 118°15'W 118°14'W 118°13'W 118°12'W 118°11'W 118°10'W 118°9'W 118°8'W 118°7'W 118°6'01'W