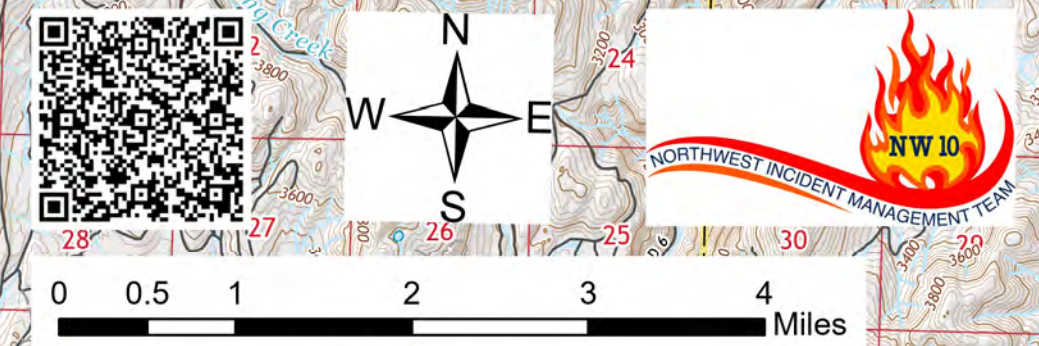


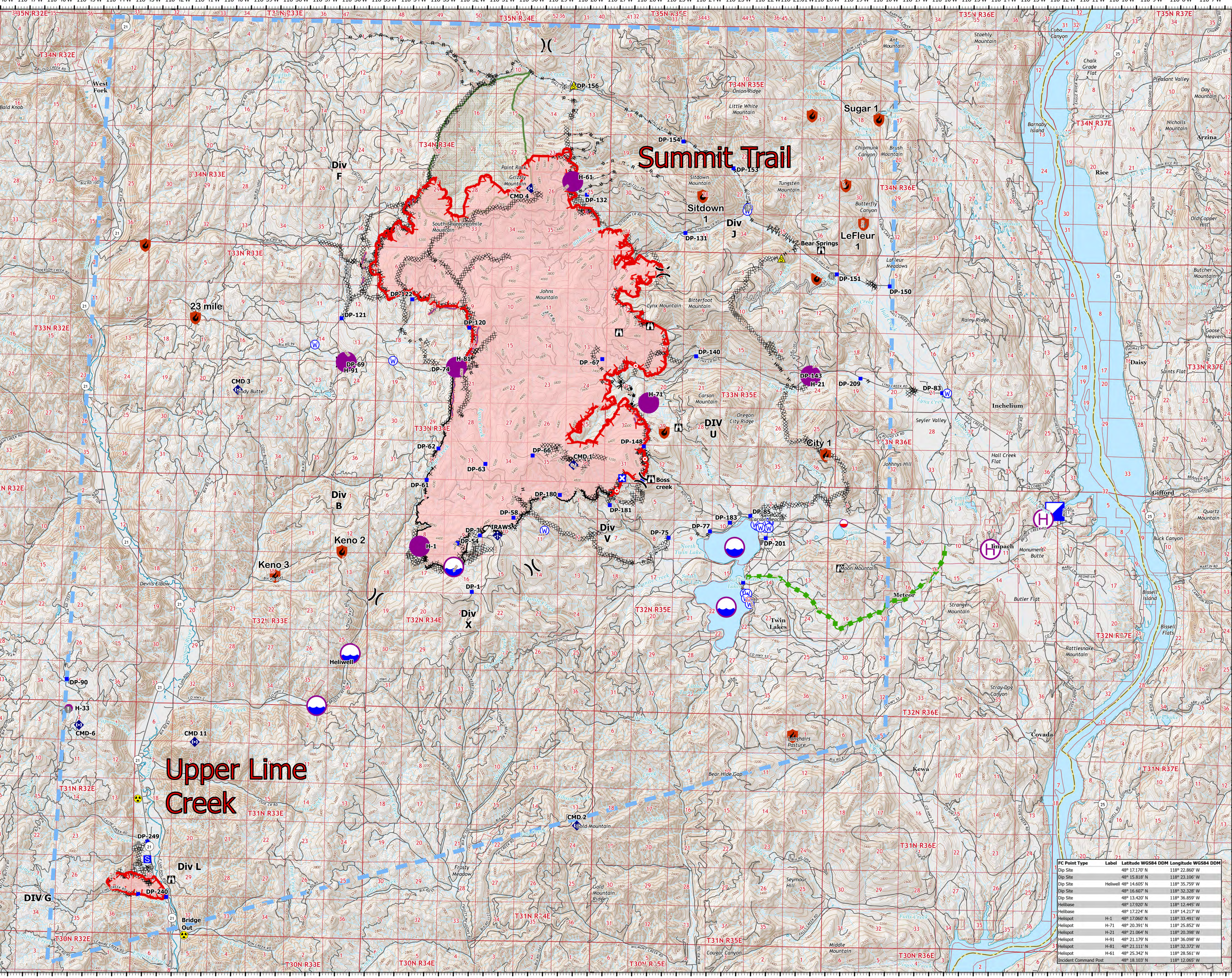
AirOps
Summit Trail Fire Upper Lime Creek
WA-COA-20087 WA-COA-200116
 28,799 acres at 08/11/2021 376 acres at 08/13/2021
 August 15, 2021



- Containment**
- Controlled (Red circle with orange border)
- Hazard (Yellow circle with black border)
- Water Source (Blue circle with white border)
- Dip Site (Blue circle with white border)
- Mobile Retardant Base (Red circle with white border)
- Helispot (Purple circle with white border)
- Helibase (Blue circle with white border)
- Division Break (Black line with 'X' marks)
- Incident Command Post (Blue square with white border)
- Drop Point (Blue square with white border)
- Closure (Black line with 'X' marks)
- Camp (Blue square with white border)
- Staging Area (Blue square with white border)
- Lookout (Red circle with white border)
- Hot Spot - Spot Fire (Red circle with white border)
- Value at Risk (Red circle with white border)
- Other (Red circle with white border)
- Bridge (Blue square with white border)
- Mobile Weather Unit (Blue square with white border)
- Repeater (Blue square with white border)
- Safety Zone (Yellow triangle with black border)
- Completed Dozer Line (Black line with 'X' marks)
- Completed Fuel Break (Black line with 'X' marks)
- Completed Hand Line (Black line with 'X' marks)
- Completed Mixed Construction Line (Black line with 'X' marks)
- Completed Road as Line (Black line with 'X' marks)
- Planned Burnout (Black line with 'X' marks)
- Planned Hand Line (Black line with 'X' marks)
- Planned Road as Line (Black line with 'X' marks)
- Access or Improved Road (Black line with 'X' marks)
- Other (Black line with 'X' marks)
- Escape Route (Green line)
- Retardant Drop (Red line)
- Temporary Flight Restriction (Blue line)
- Fire Edge (Red line)
- Contained Line (Black line with 'X' marks)
- Wildfire Daily Fire Perimeter (Red line)
- Wilderness Area (Green line)

0 0.5 1 2 3 4 Miles

08/11/2021 2037



FC Point Type	Label	Latitude WGS84 DDM	Longitude WGS84 DDM
Dip Site	DP-1	48° 17.170' N	118° 22.860' W
Dip Site	DP-2	48° 15.818' N	118° 23.106' W
Dip Site	DP-3	48° 14.605' N	118° 23.759' W
Dip Site	DP-4	48° 16.607' N	118° 23.328' W
Dip Site	DP-5	48° 13.420' N	118° 26.859' W
Helibase	H-1	48° 17.920' N	118° 12.445' W
Helibase	H-2	48° 17.224' N	118° 14.217' W
Helispot	H-1	48° 17.060' N	118° 33.491' W
Helispot	H-71	48° 20.391' N	118° 25.852' W
Helispot	H-21	48° 21.064' N	118° 20.398' W
Helispot	H-91	48° 21.179' N	118° 26.098' W
Helispot	H-61	48° 21.118' N	118° 23.378' W
Helispot	H-61	48° 25.342' N	118° 28.561' W
Incident Command Post	ICP-1	48° 18.103' N	118° 12.065' W