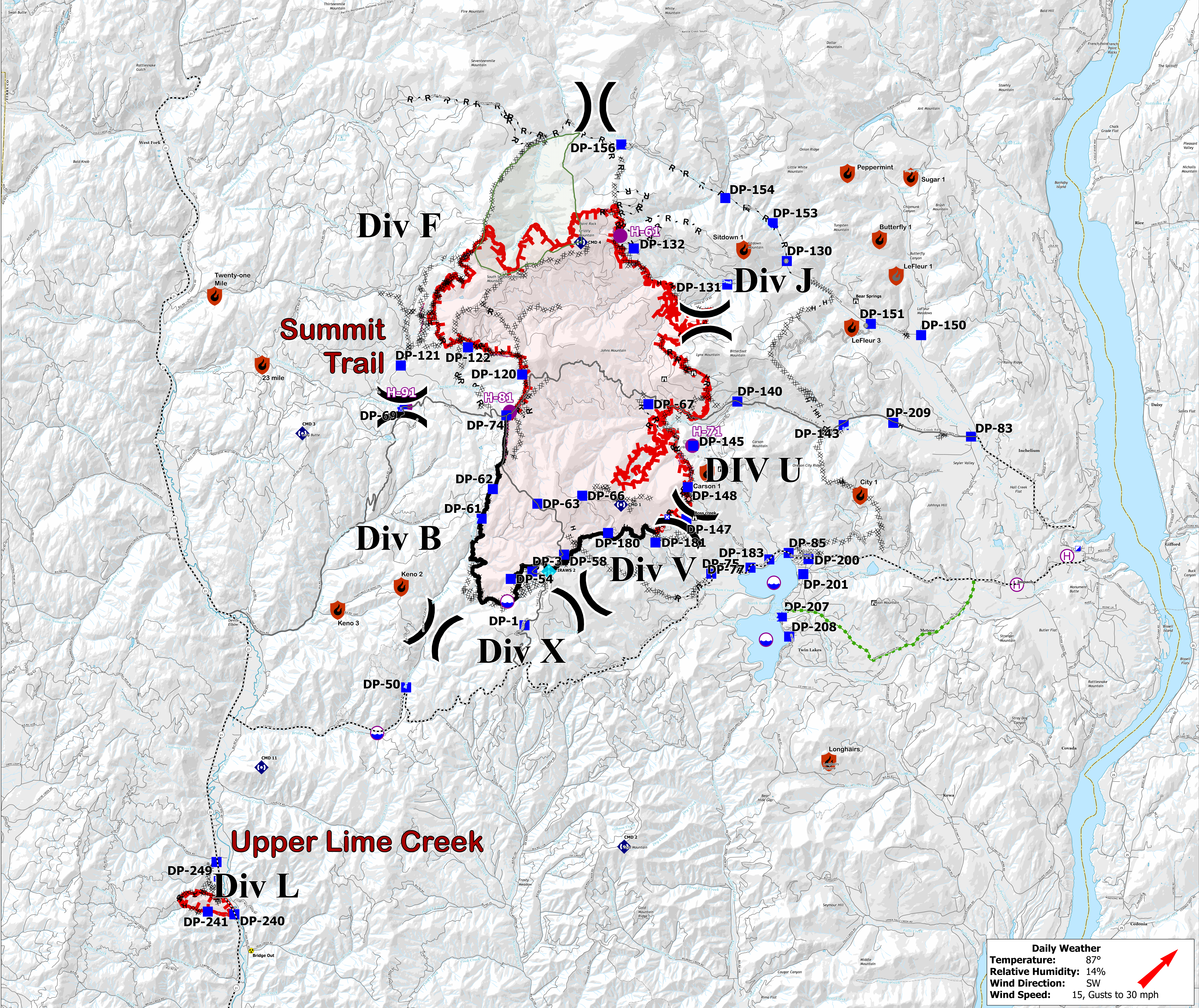


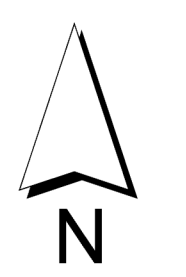
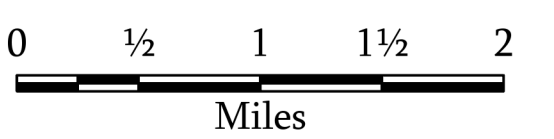
**Briefing Area Map**  
**Summit Trail Fire**  
 WA-COA-200087  
**Upper Lime Creek**  
 WA-COA-200116  
 August 15, 2021



Summit Trail Fire  
 29,205 acres on 08/14/2021 at 2140  
 Upper Lime Creek Fire  
 376 acres on 08/13/2021 at 2340



- Controlled
- Out
- Dip Site
- Helispot
- Helibase
- Division Break
- Incident Command Post
- Drop Point
- Closure
- Camp
- Staging Area
- Lookout
- Hot Spot - Spot Fire
- Comm Tower
- Bridge
- Mobile Weather Unit
- Repeater
- Hazard
- Completed Dozer Line
- Completed Fuel Break
- Completed Hand Line
- Completed Mixed Construction Line
- Completed Road as Line
- Planned Burnout
- Planned Hand Line
- Planned Road as Line
- Planned Secondary Line
- Access or Improved Road
- Other
- Escape Route
- Retardant Drop
- Fire Edge
- Contained Line
- Local Connector
- Local Road
- 4WD
- Ferry
- Trail
- Main Route - Improved
- Main Route - Unimproved
- Wilderness Area



1:50,000

**Daily Weather**  
**Temperature:** 87°  
**Relative Humidity:** 14%  
**Wind Direction:** SW  
**Wind Speed:** 15, Gusts to 30 mph