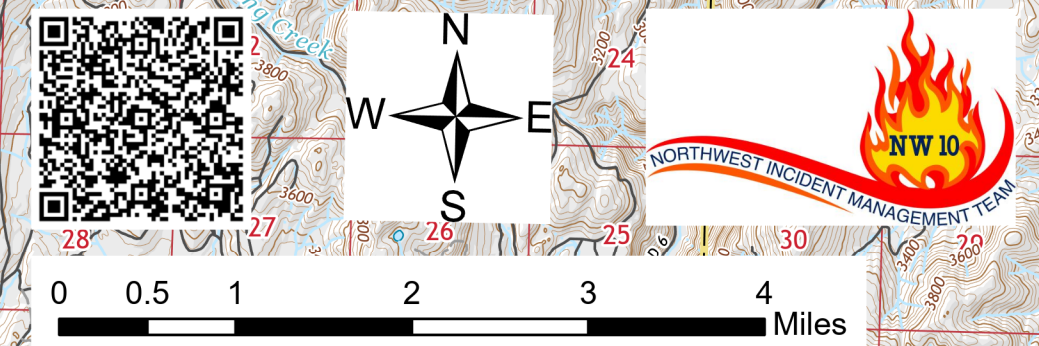
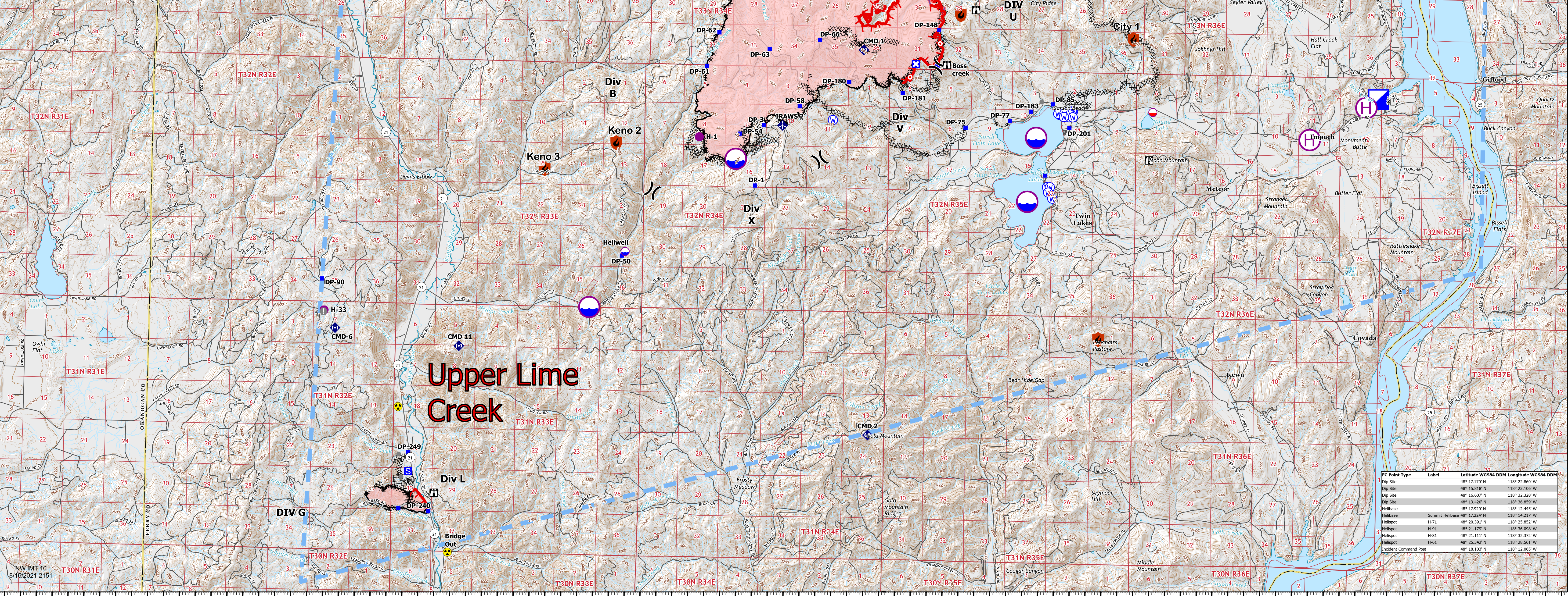


**AirOps**  
**Summit Trail Fire Upper Lime Creek**  
**WA-COA-20087 WA-COA-200116**  
 40,608 acres at 08/16/2021 376 acres at 08/13/2021  
 August 17, 2021



- Containment**
- Controlled
  - Hazard
  - Water Source
  - Dip Site
  - Mobile Retardant Base
  - Helisite
  - Helibase
  - Division Break
  - Incident Command Post
  - Drop Point
  - Closure
  - Camp
  - Staging Area
  - Lookout
  - Hot Spot - Spot Fire
  - Value at Risk
  - Other
  - Bridge
  - Repeater
- Other**
- Safety Zone
  - Completed Dozer Line
  - Completed Fuel Break
  - Completed Hand Line
  - Completed Mixed Construction Line
  - Completed Road as Line
  - Planned Burnout
  - Planned Road as Line
  - Planned Secondary Line
  - Access or Improved Road
  - Other
  - Retardant Drop
  - Temporary Flight Restriction
  - Fire Edge
  - Contained Line
  - Wildfire Daily Fire Perimeter
  - Wilderness Area



IC Point Type	Label	Latitude WGS84 DDM	Longitude WGS84 DDM
Dip Site	H-61	48° 17.170' N	118° 22.860' W
Dip Site	H-71	48° 15.810' N	118° 23.810' W
Dip Site	H-91	48° 16.607' N	118° 32.328' W
Dip Site	H-81	48° 13.420' N	118° 36.859' W
Helibase	Summit Helibase	48° 17.920' N	118° 12.445' W
Helisite	H-71	48° 20.291' N	118° 25.817' W
Helisite	H-91	48° 21.179' N	118° 36.098' W
Helisite	H-81	48° 21.111' N	118° 32.372' W
Helisite	H-61	48° 25.342' N	118° 28.561' W
Incident Command Post		48° 18.103' N	118° 12.065' W

NW IMT 10  
 8/16/2021 2151