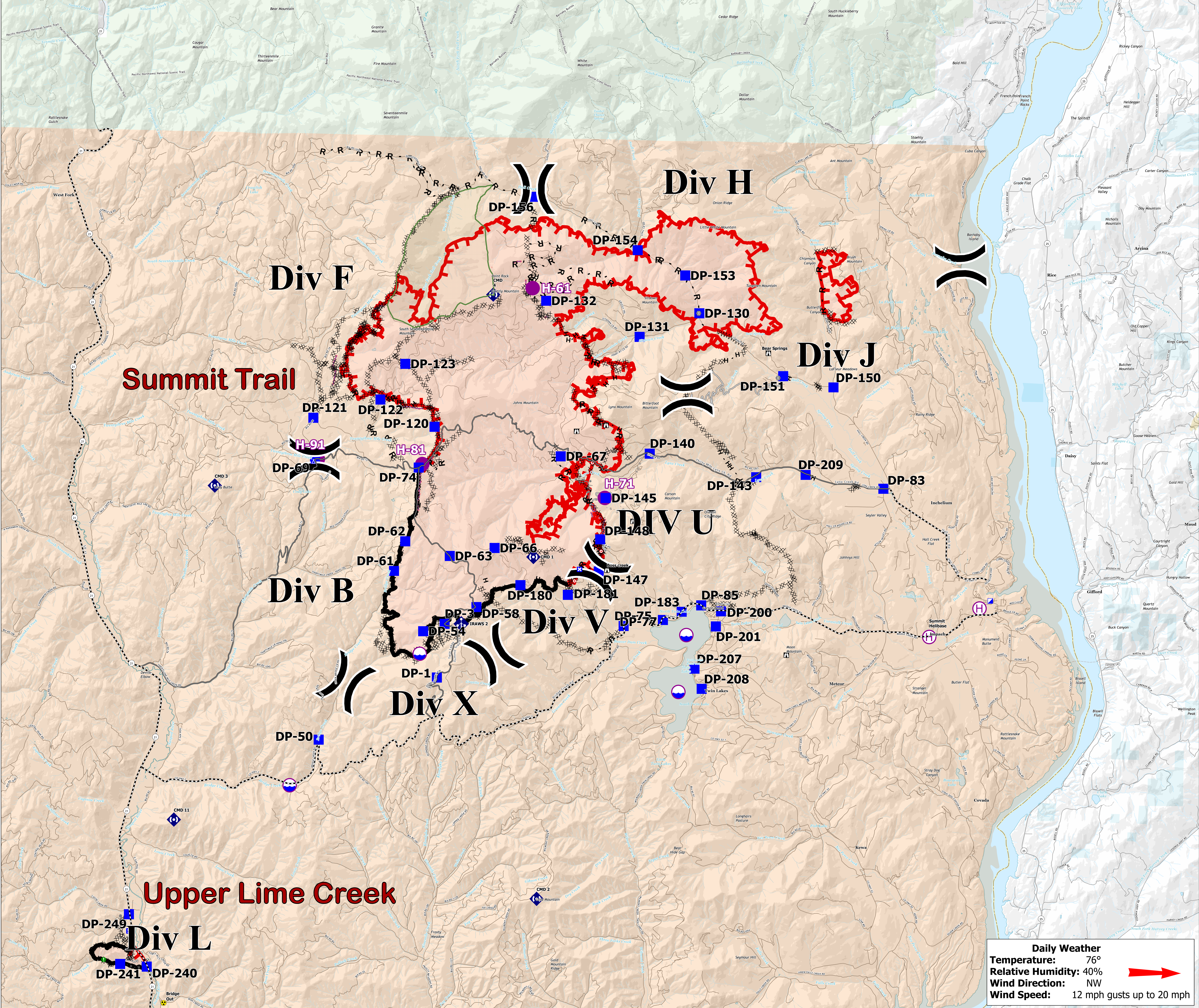


**Briefing Area Map**  
**Summit Trail Fire**  
**WA-COA-200087**  
**Upper Lime Creek**  
**WA-COA-200116**  
**August 17, 2021**

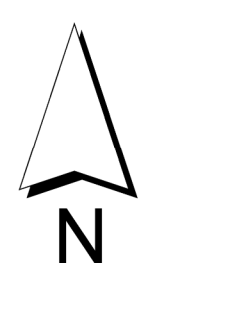
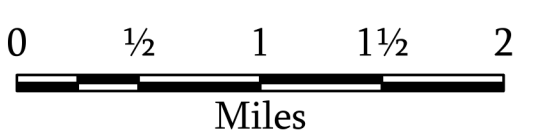


Summit Trail Fire  
 40,608 acres on 08/16/2021 at 1445  
 Upper Lime Creek Fire  
 376 acres on 08/13/2021 at 2340



- Dip Site
- Helispot
- Helibase
- Division Break
- Incident Command Post
- Drop Point
- Closure
- Camp
- Staging Area
- Lookout
- Hot Spot - Spot Fire
- Comm Tower
- Bridge
- Resource Location
- Mobile Weather Unit
- Repeater
- Hazard
- Completed Dozer Line
- Completed Fuel Break
- Completed Hand Line
- Completed Mixed Construction Line
- Completed Road as Line
- Planned Burnout
- Planned Road as Line
- Planned Secondary Line
- Access or Improved Road
- Other
- Retardant Drop
- Fire Edge
- Contained Line
- Local Connector
- Local Road
- 4WD
- Ferry
- Trail
- Main Route - Improved
- Main Route - Unimproved
- Bureau of Indian Affairs (BIA)
- Bureau of Land Management (BLM)
- State
- US Forest Service (USFS)
- Private
- Undetermined
- Wilderness Area

**Daily Weather**  
**Temperature:** 76°  
**Relative Humidity:** 40%   
**Wind Direction:** NW  
**Wind Speed:** 12 mph gusts up to 20 mph



1:50,000

