

IAP MAP

Summit Trail Fire

WA-COA-200087

40,608 Acres
on 08/16/2021 at 1445

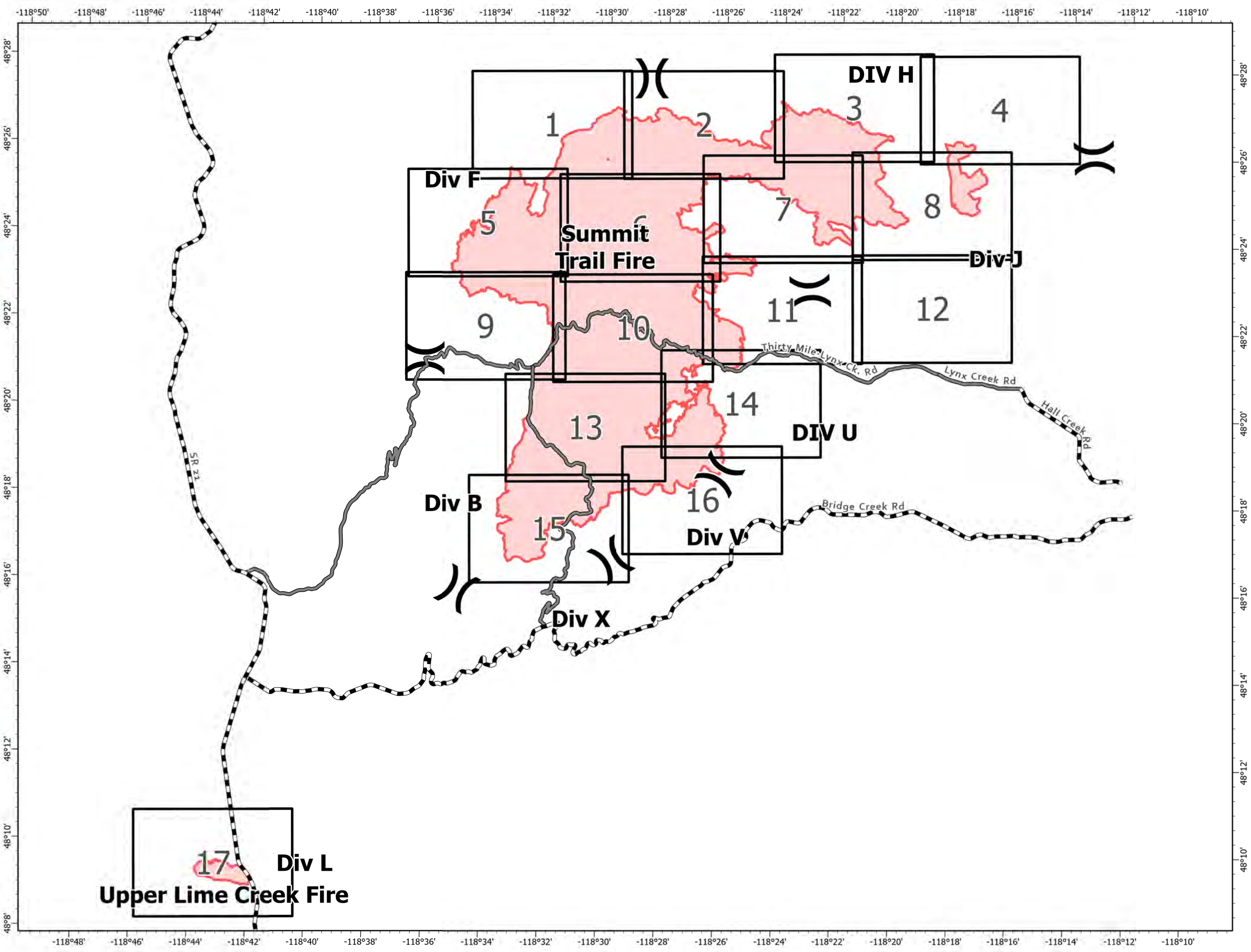
August 17, 2021



- ⌘ Division Break
- ▭ Fire Perimeter
- ▬ Main Route - Improved
- ▬ Main Route - Unimproved

Daily Weather
Temperature: 76°
Relative Humidity: 40%
Wind Direction: NW
Wind Speed: 12 mph gusts up to 20 mph

1:150,000
NAD 1983
UTM 11N



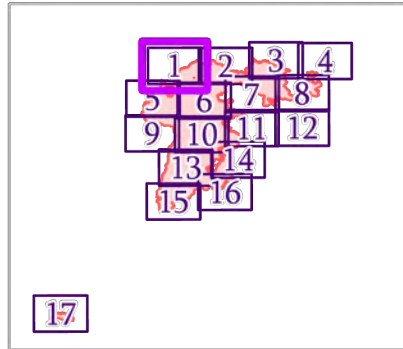
IAP MAP

Summit Trail Fire

WA-COA-200087

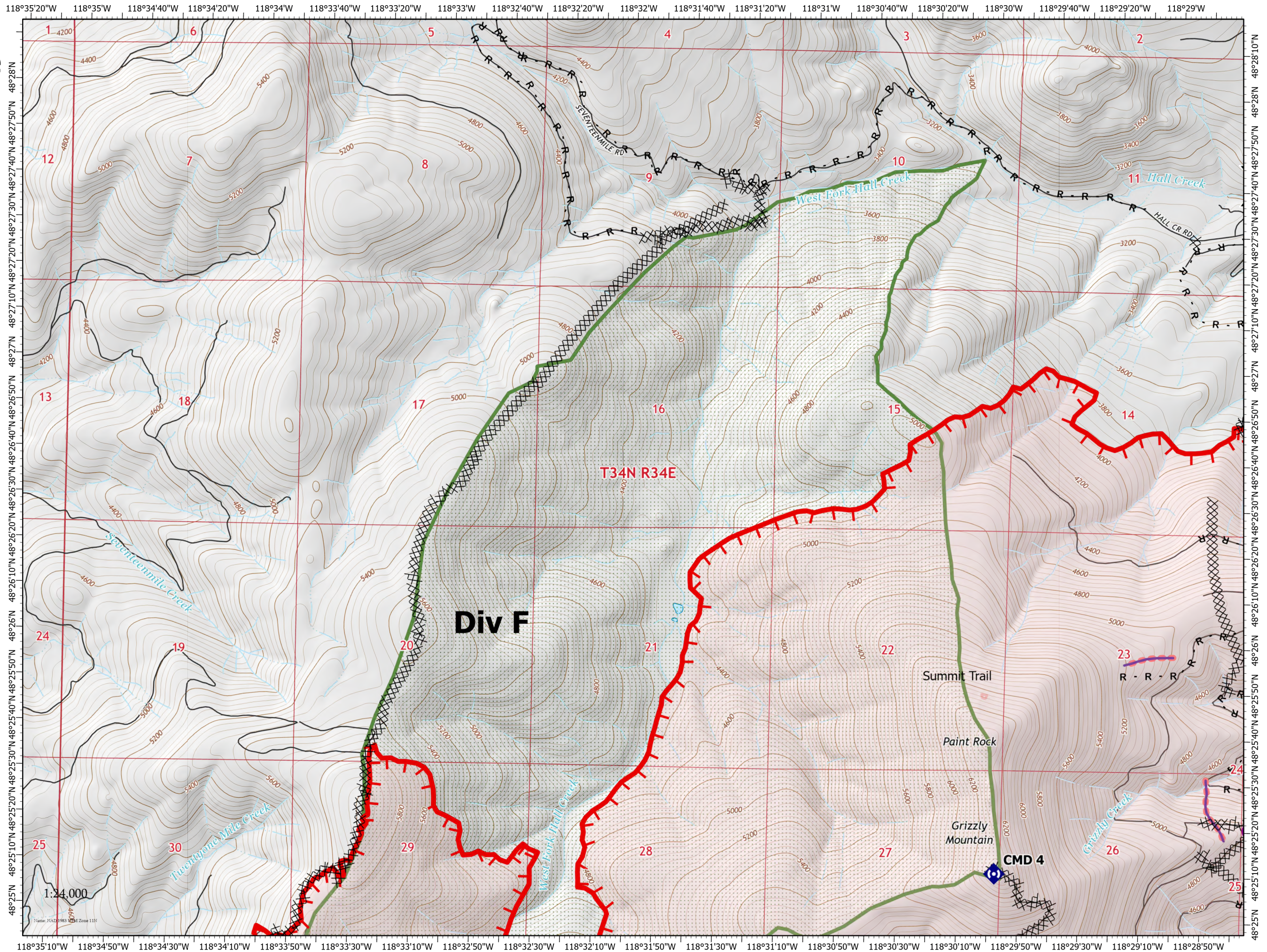
40,608 Acres
on 08/16/2021 at 1445

August 17, 2021



Page 1 of 17

- Helispot
- Division Break
- Drop Point
- Repeater
- Completed Dozer Line
- Completed Road as Line
- Retardant Drop
- Fire Edge
- Fire Perimeter
- State or Territory
- Local Road
- County or Equivalent
- Wilderness Area



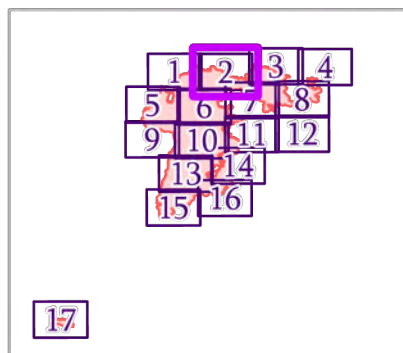
IAP MAP

Summit Trail Fire

WA-COA-200087

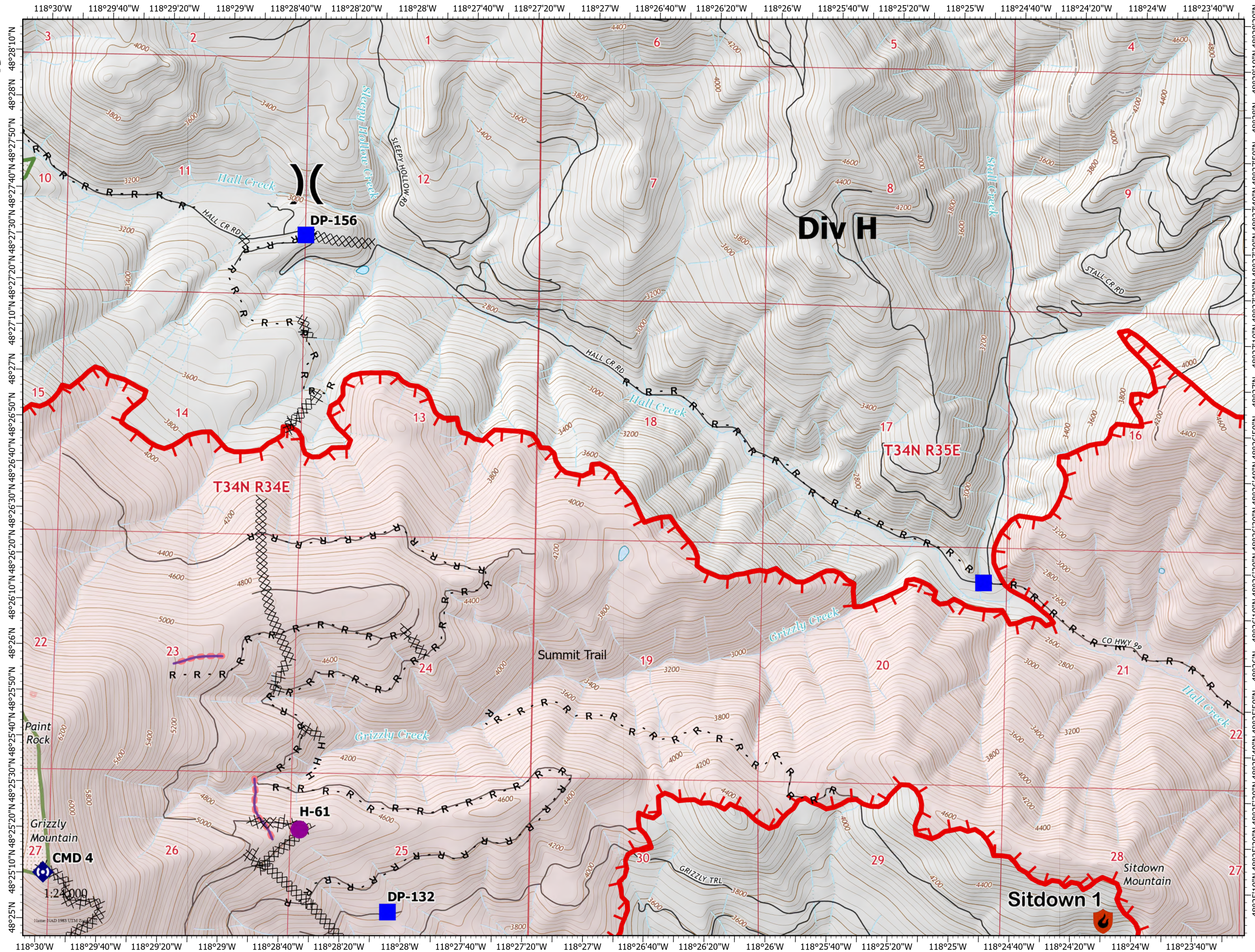
40,608 Acres
on 08/16/2021 at 1445

August 17, 2021



Page 2 of 17

- Helispot
-) Division Break
- Drop Point
- ◆ Repeater
- ⊗ Completed Dozer Line
- H Completed Hand Line
- R Completed Road as Line
- Retardant Drop
- ┌ Fire Edge
- Fire Perimeter
- State or Territory
- Local Road
- - - 4WD
- County or Equivalent
- Wilderness Area



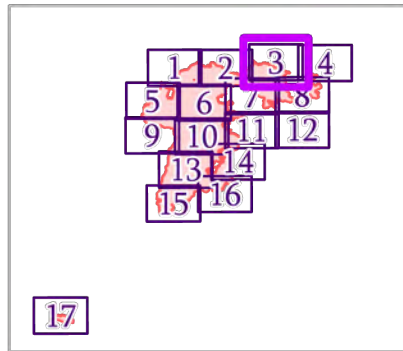
IAP MAP

Summit Trail Fire

WA-COA-200087

40,608 Acres
on 08/16/2021 at 1445











August 17, 2021

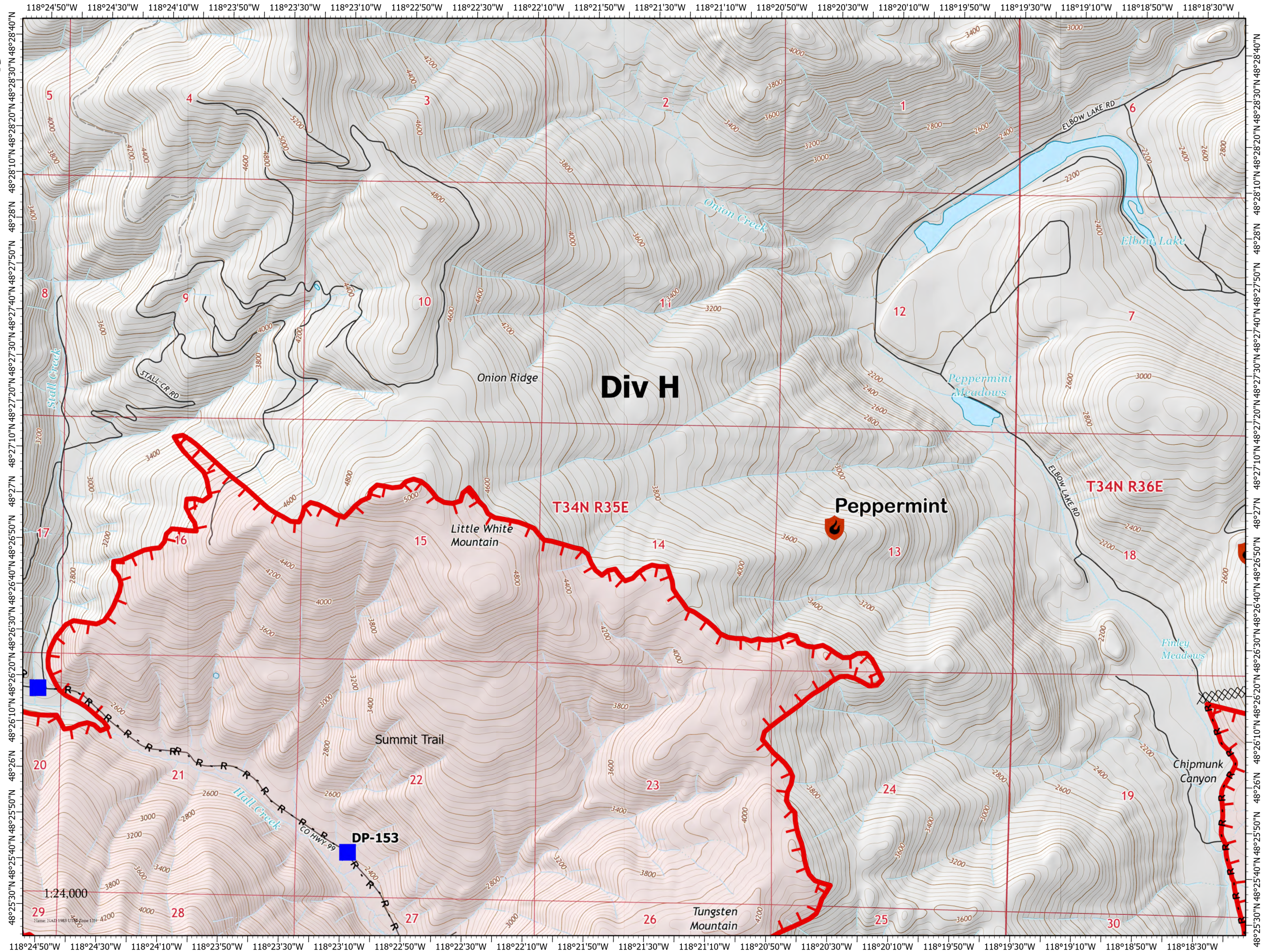


Page 3 of 17

New Starts

Containment

-  Out
-  Drop Point
-  Completed Dozer Line
-  Completed Road as Line
-  Fire Edge
-  Fire Perimeter
-  State or Territory
-  Local Road
-  4WD
-  County or Equivalent



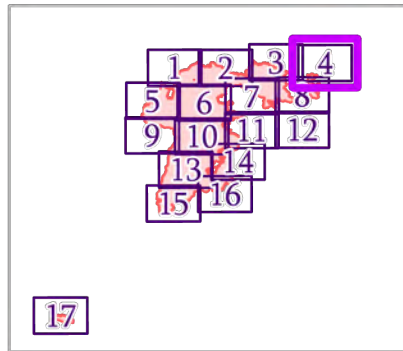
IAP MAP

Summit Trail Fire

WA-COA-200087

40,608 Acres
on 08/16/2021 at 1445










August 17, 2021

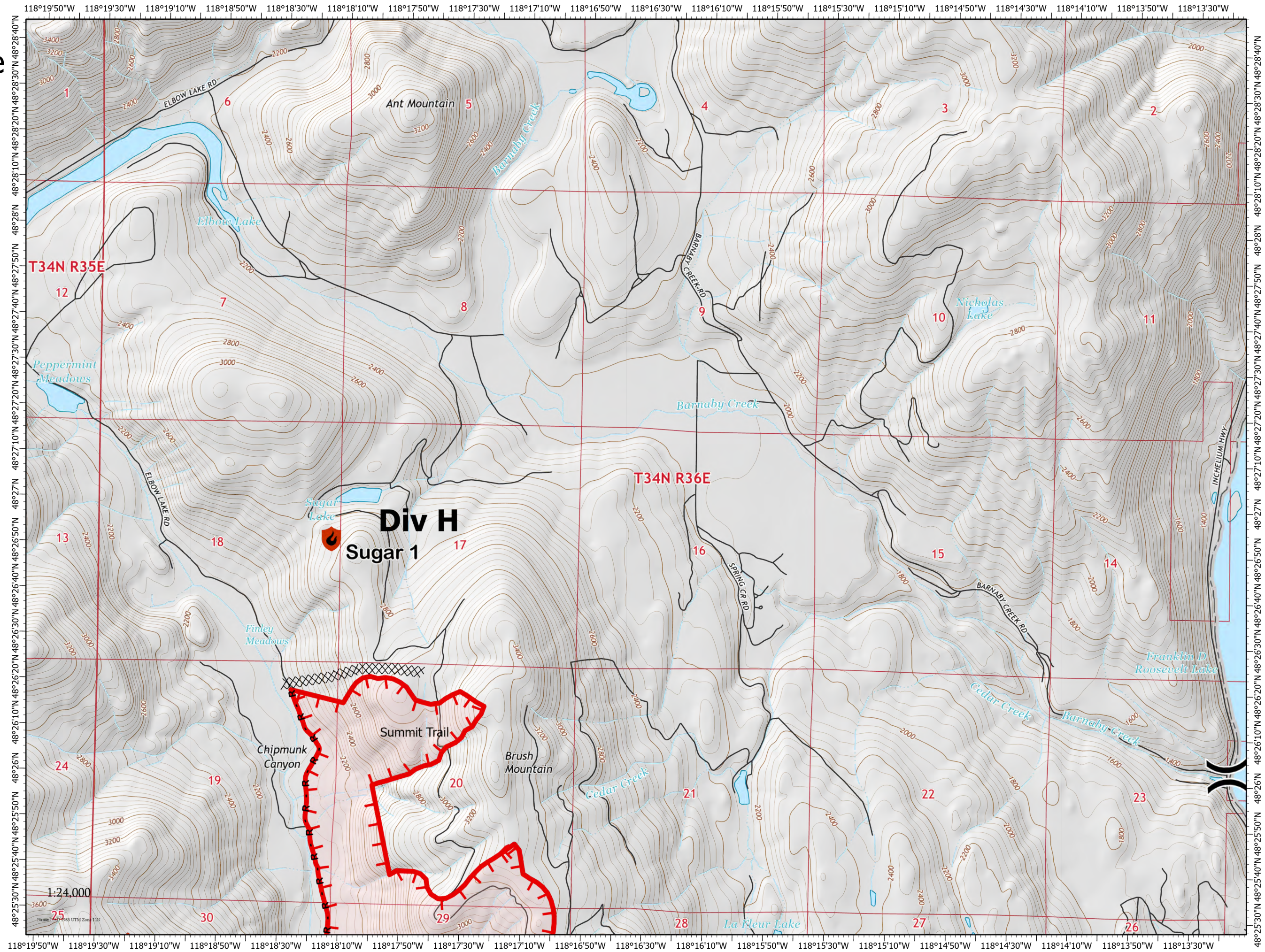


Page 4 of 17

New Starts

Containment

-  Out
-  Division Break
-  Completed Dozer Line
-  Completed Road as Line
-  Fire Edge
-  Fire Perimeter
-  State or Territory
-  Local Road
-  County or Equivalent



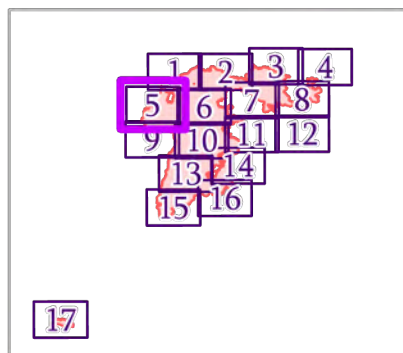
IAP MAP

Summit Trail Fire

WA-COA-200087

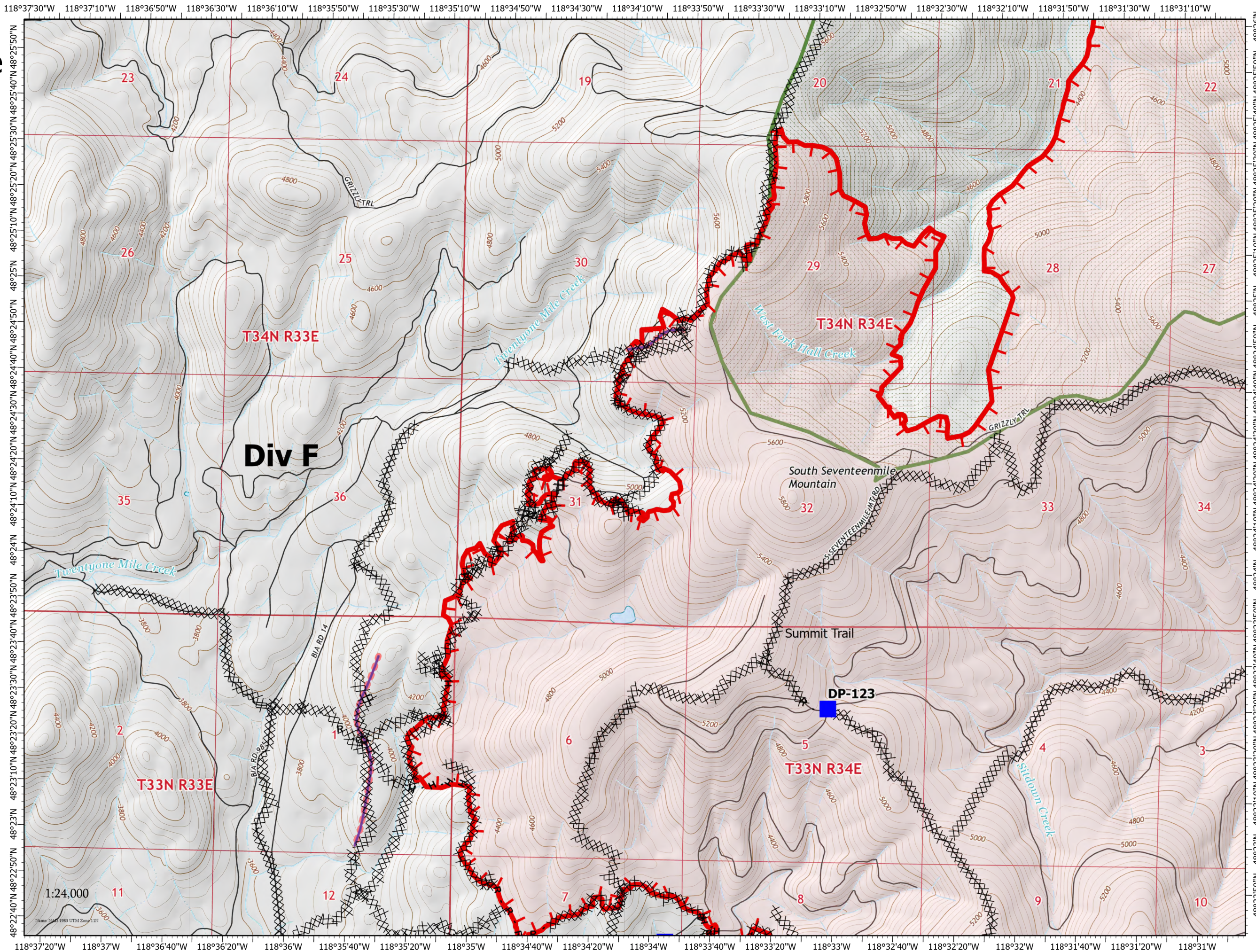
40,608 Acres
on 08/16/2021 at 1445

August 17, 2021



Page 5 of 17

- Drop Point
- Completed Dozer Line
- Completed Hand Line
- Completed Road as Line
- Retardant Drop
- └─┘ Fire Edge
- Fire Perimeter
- State or Territory
- Local Road
- County or Equivalent
- Wilderness Area



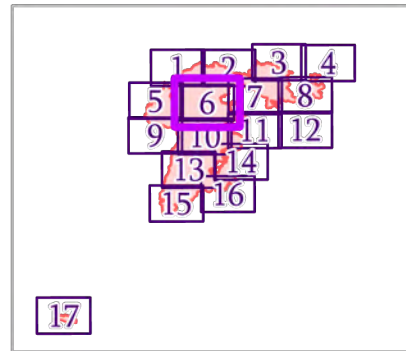
IAP MAP

Summit Trail Fire

WA-COA-200087

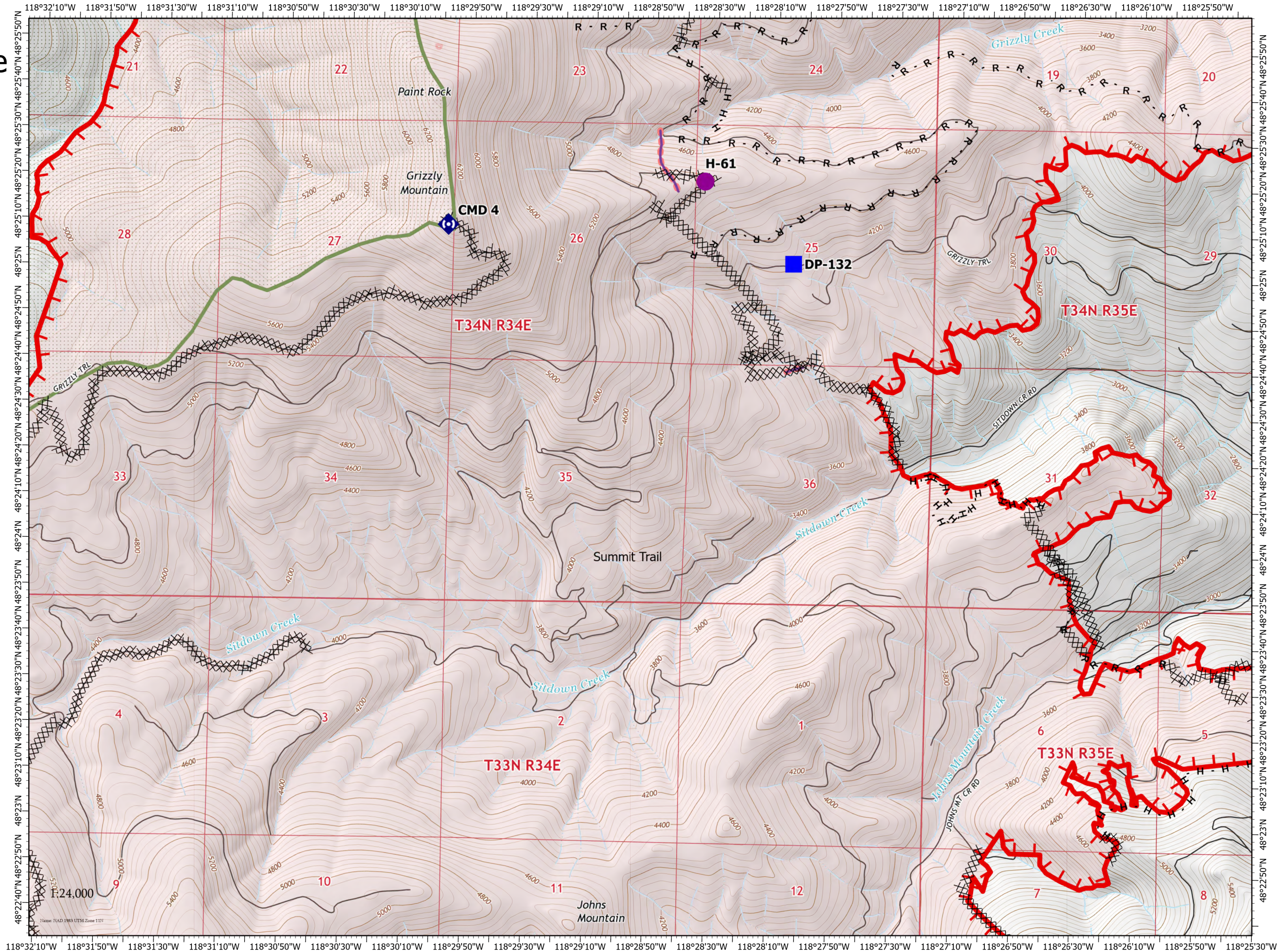
40,608 Acres
on 08/16/2021 at 1445

August 17, 2021



Page 6 of 17

- Helispot
- Drop Point
- ◆ Repeater
- ⊗ Completed Dozer Line
- H Completed Hand Line
- R Completed Road as Line
- Retardant Drop
- ┌ Fire Edge
- Fire Perimeter
- State or Territory
- Local Road
- County or Equivalent
- Wilderness Area



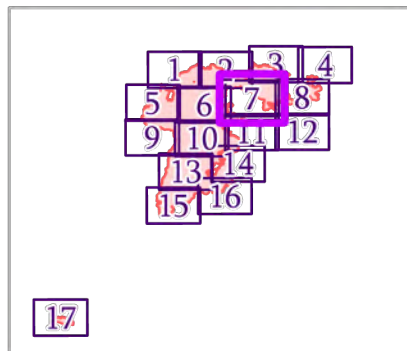
IAP MAP

Summit Trail Fire

WA-COA-200087

40,608 Acres
on 08/16/2021 at 1445





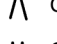







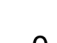

August 17, 2021

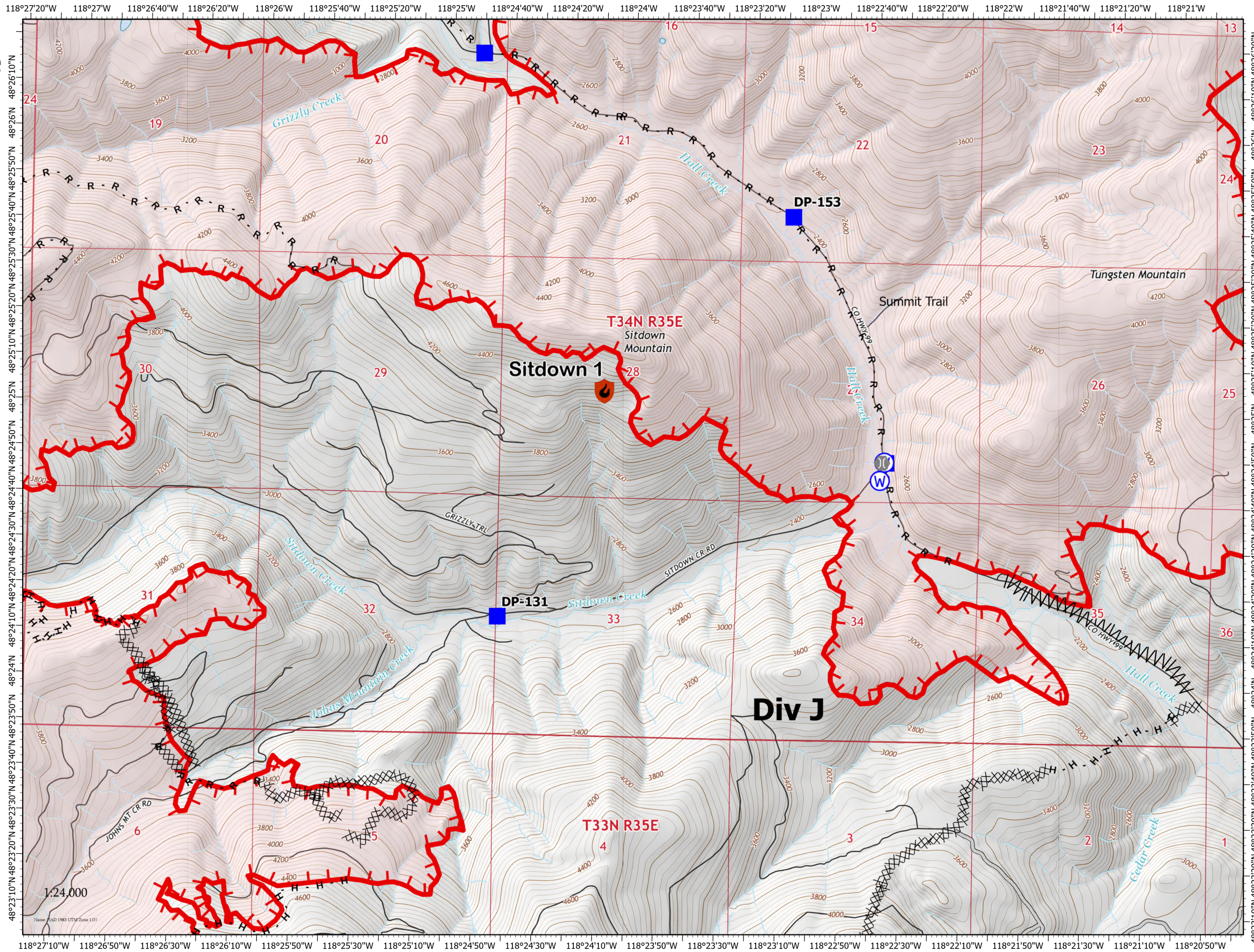


Page 7 of 17

New Starts

Containment

-  Out
-  Drop Point
-  Bridge
-  Water Source
-  Completed Dozer Line
-  Completed Fuel Break
-  Completed Hand Line
-  Completed Road as Line
-  Access or Improved Road
-  Fire Edge
-  Fire Perimeter
-  State or Territory
-  Local Road
-  County or Equivalent



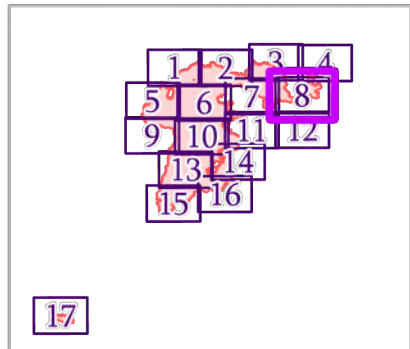
IAP MAP

Summit Trail Fire

WA-COA-200087

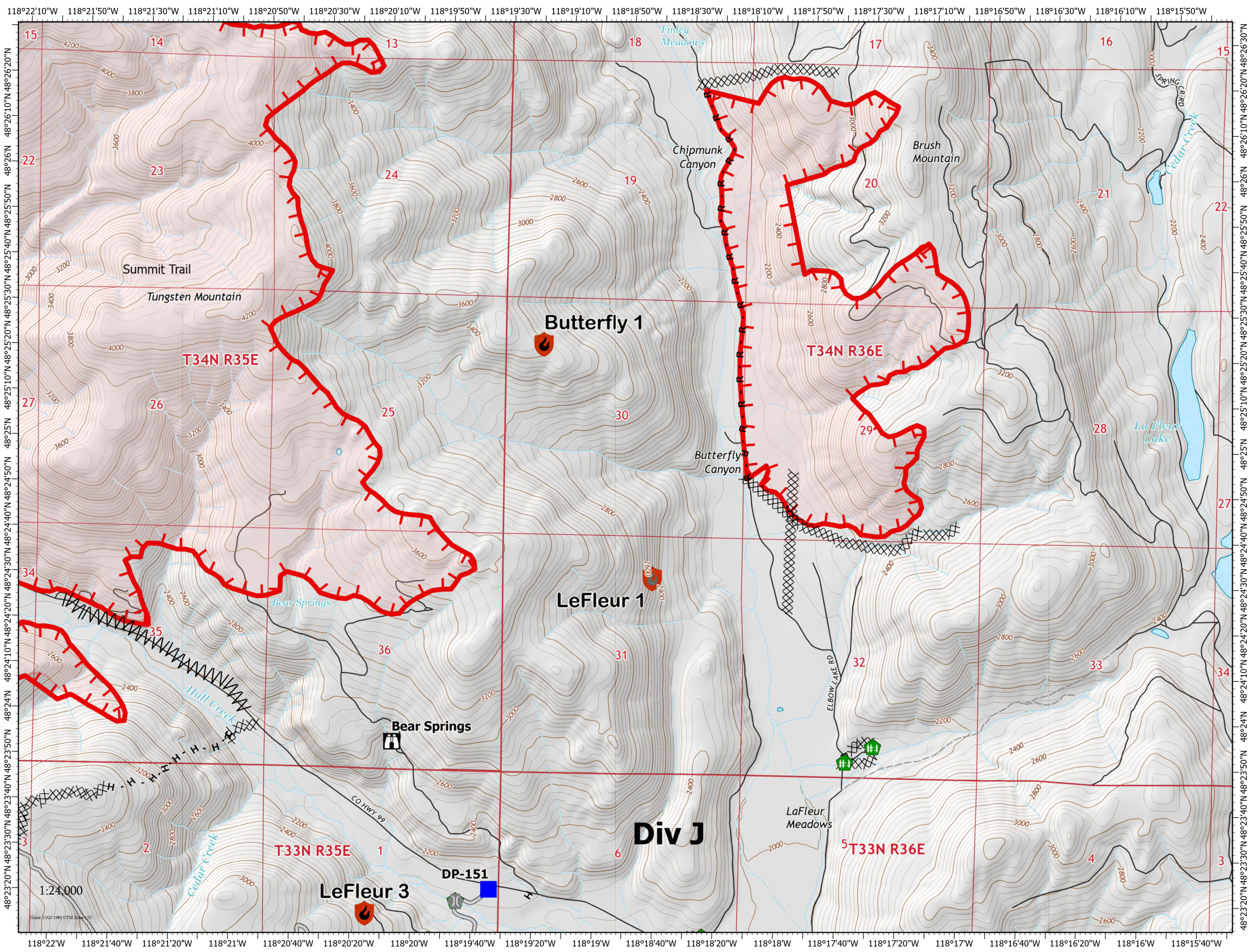
40,608 Acres
on 08/16/2021 at 1445

August 17, 2021



Page 8 of 17

- New Starts**
- Containment**
- Controlled
- Out
- Drop Point
- Lookout
- Bridge
- Water Development or Draft Site
- Fence - Cut/Damaged
- Completed Dozer Line
- Completed Fuel Break
- Completed Hand Line
- Completed Road as Line
- Access or Improved Road
- Fire Edge
- Fire Perimeter
- State or Territory
- Local Road



1:24,000

Source: CAD 1983 UTM Zone 12N

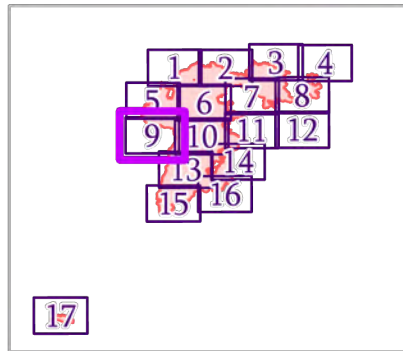
IAP MAP

Summit Trail Fire

WA-COA-200087

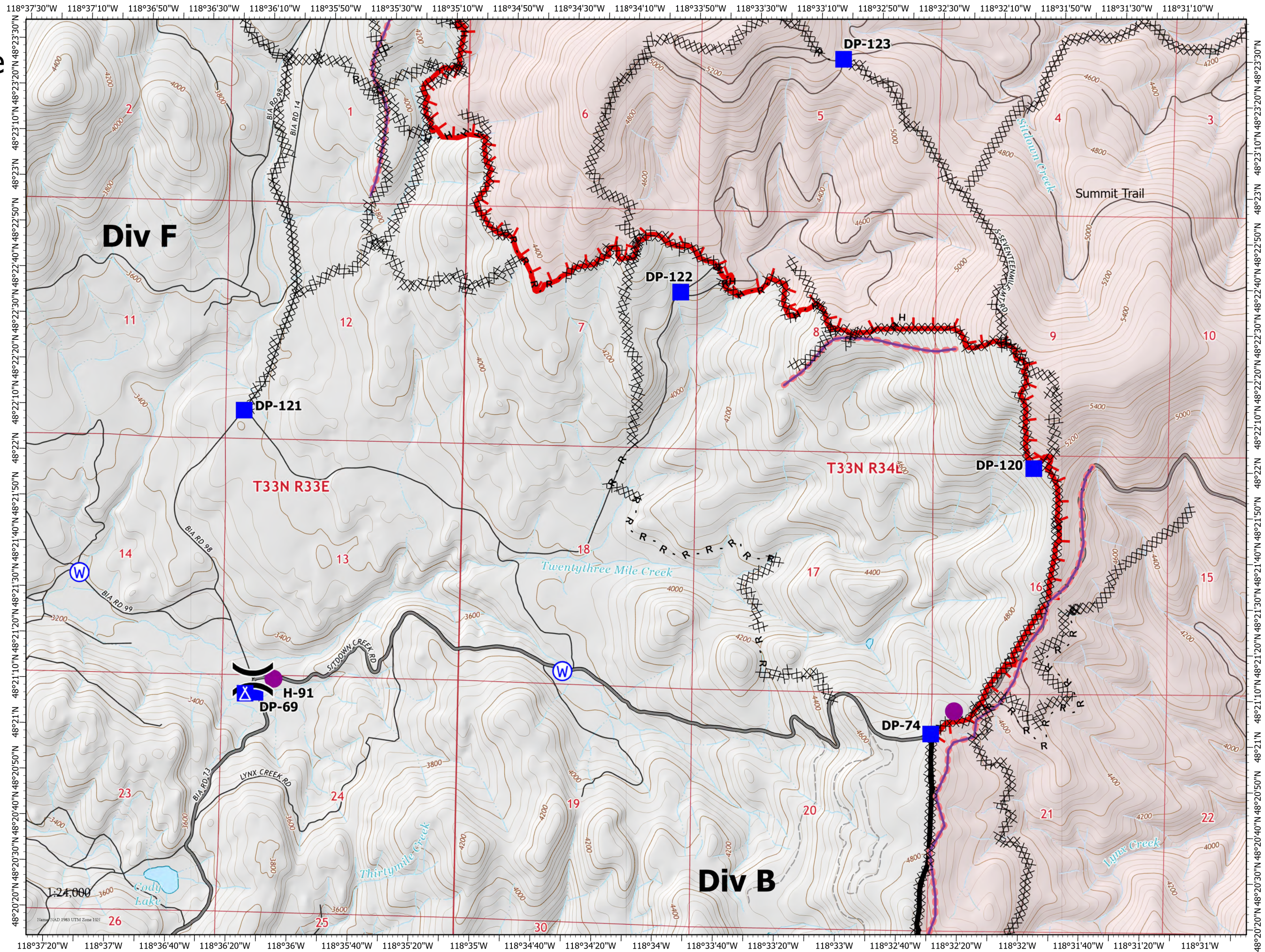
40,608 Acres
on 08/16/2021 at 1445

August 17, 2021



Page 9 of 17

- Helispot
- X Division Break
- Drop Point
- X Camp
- W Water Source
- X Completed Dozer Line
- H Completed Hand Line
- R Completed Road as Line
- Retardant Drop
- ┌ Fire Edge
- ▬ Contained Line
- ▬ Fire Perimeter
- State or Territory
- ▬ Main Route - Unimproved
- ▬ Local Road
- - - 4WD
- County or Equivalent



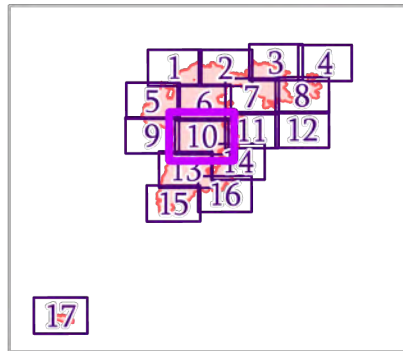
IAP MAP

Summit Trail Fire

WA-COA-200087

40,608 Acres
on 08/16/2021 at 1445

August 17, 2021

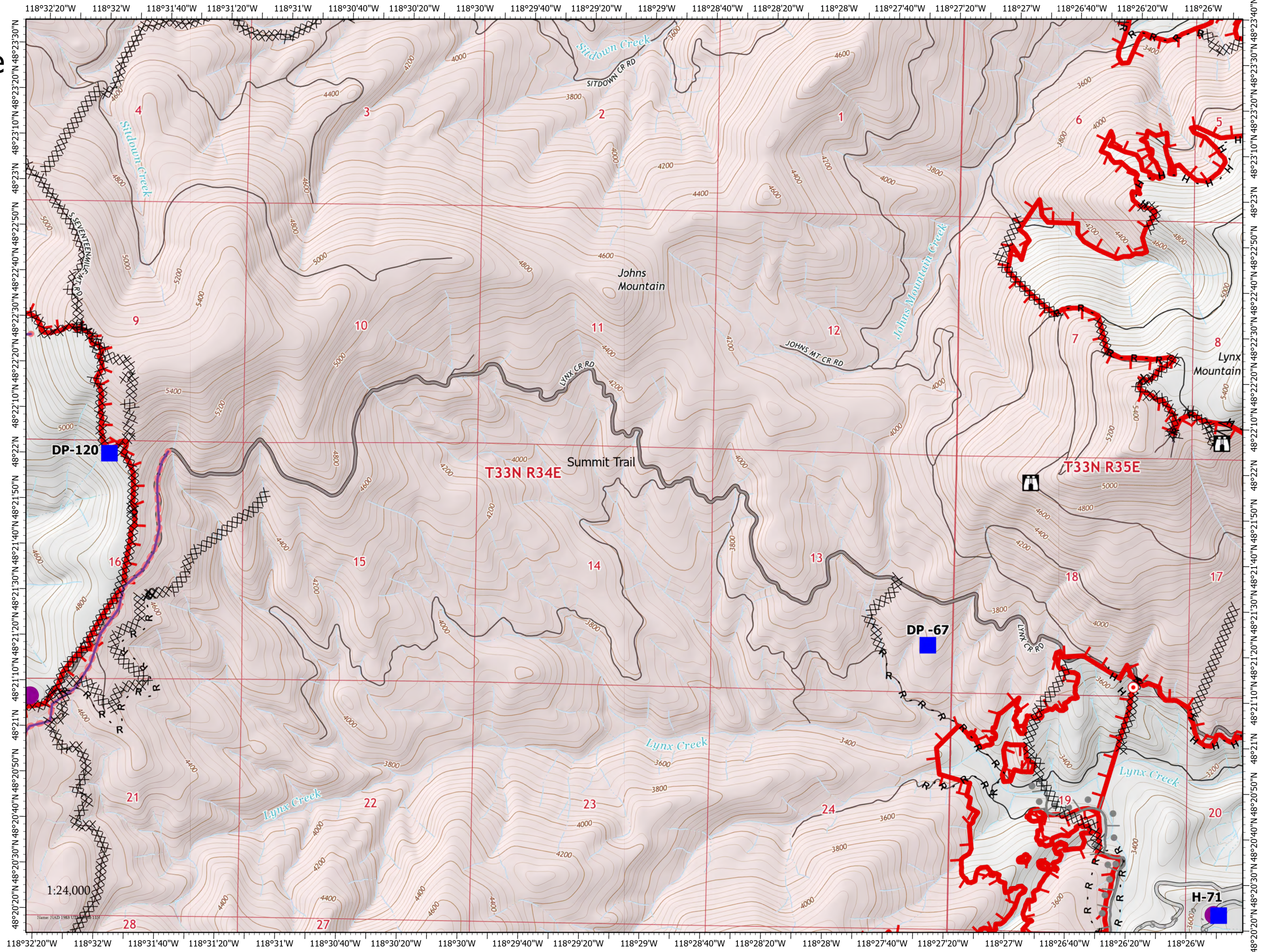


Page 10 of 17

- Helispot
- Drop Point
- Lookout
- Hot Spot - Spot Fire
- Structure Wrap
- Completed Dozer Line
- Completed Fuel Break
- Completed Hand Line
- Completed Road as Line
- Planned Burnout
- Planned Secondary Line
- Access or Improved Road
- Retardant Drop
- Fire Edge
- Fire Perimeter
- State or Territory
- Main Route - Unimproved
- Local Road
- 4WD



Miles



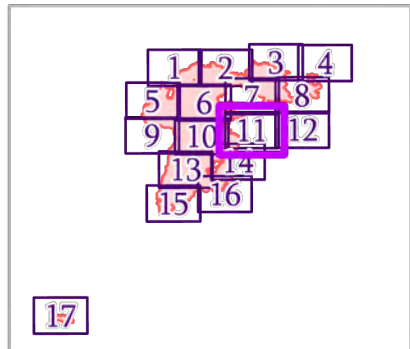
IAP MAP

Summit Trail Fire

WA-COA-200087

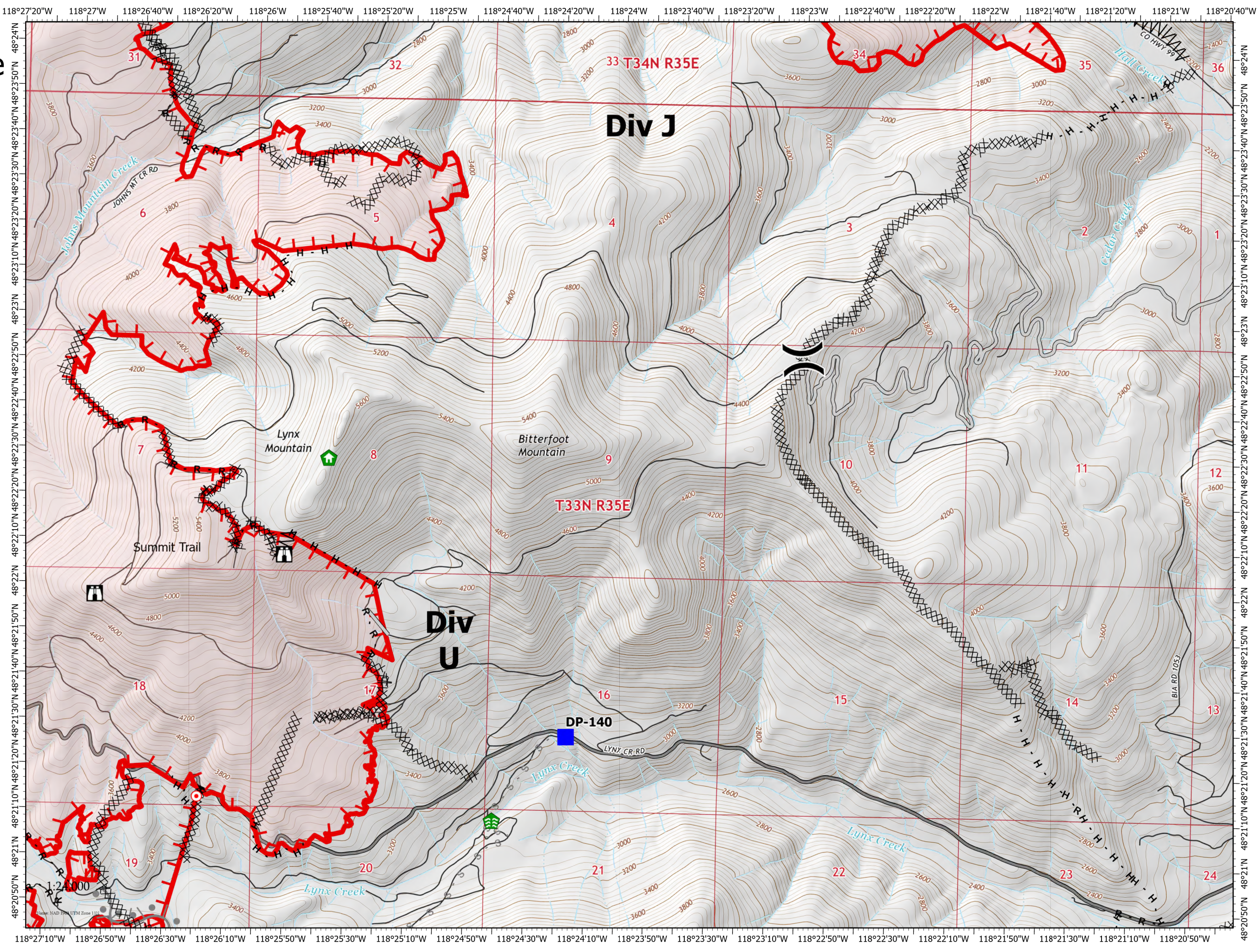
40,608 Acres
on 08/16/2021 at 1445

August 17, 2021



Page 11 of 17

- Division Break
- Drop Point
- Lookout
- Hot Spot - Spot Fire
- Structure Wrap
- Stream Crossing
- Completed Dozer Line
- Completed Fuel Break
- Completed Hand Line
- Completed Road as Line
- Planned Burnout
- Planned Secondary Line
- Access or Improved Road
- Fire Edge
- Fire Perimeter
- State or Territory
- Main Route - Unimproved
- Local Road
- County or Equivalent



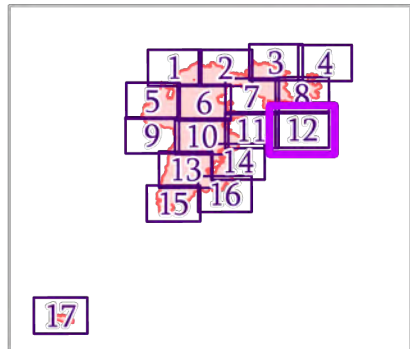
IAP MAP

Summit Trail Fire

WA-COA-200087

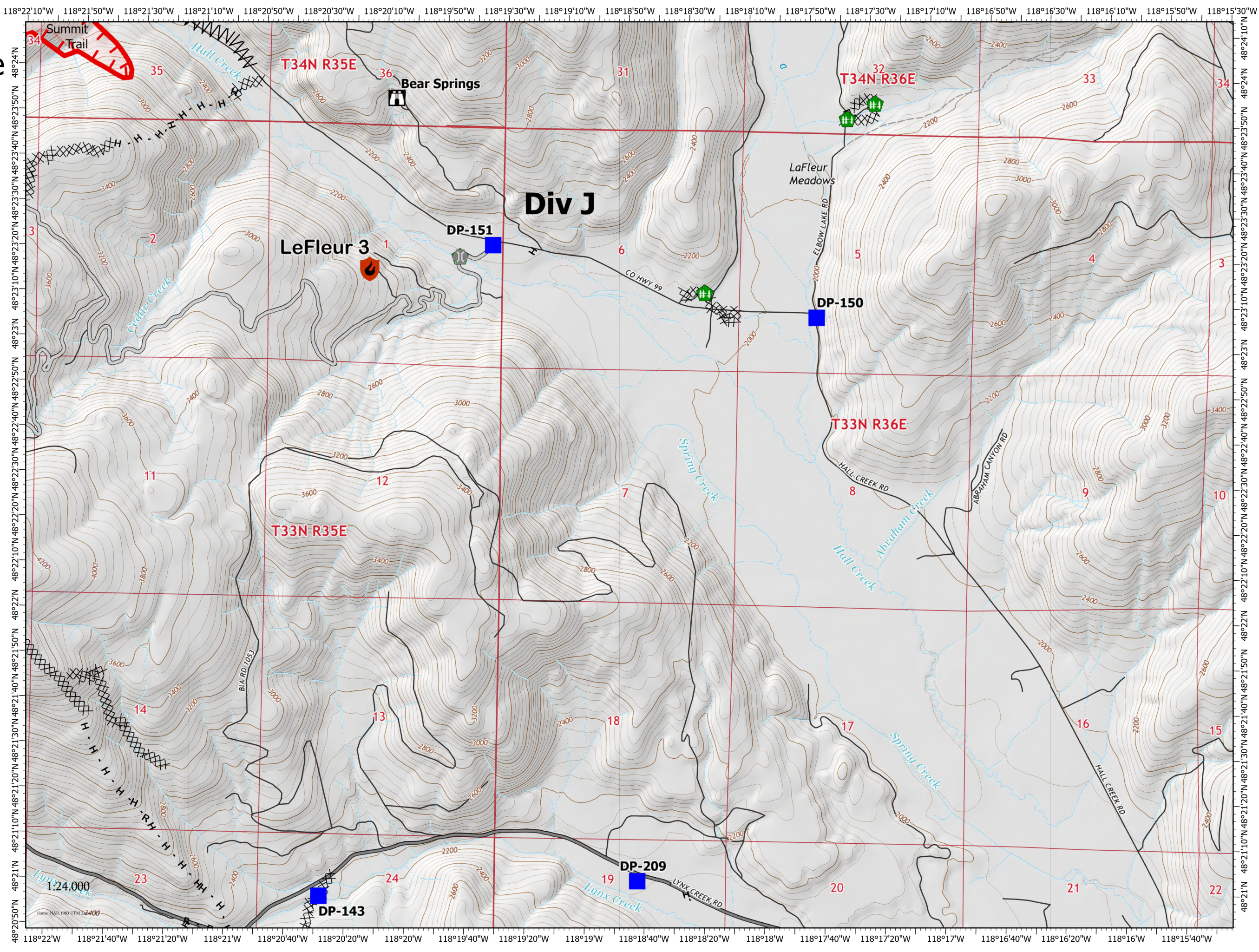
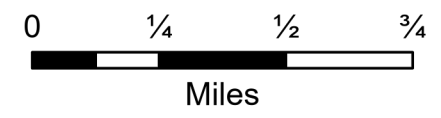
40,608 Acres
on 08/16/2021 at 1445

August 17, 2021



Page 12 of 17

- New Starts**
- Out
 - Drop Point
 - Lookout
 - Bridge
 - Water Development or Draft Site
 - Fence - Cut/Damaged
 - Completed Dozer Line
 - Completed Fuel Break
 - Completed Hand Line
 - Completed Road as Line
 - Access or Improved Road
 - Fire Edge
 - Fire Perimeter
 - State or Territory
 - Main Route - Unimproved
 - Local Road



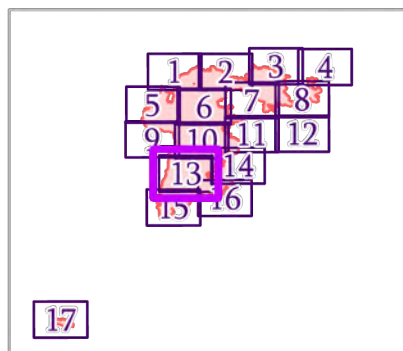
IAP MAP

Summit Trail Fire

WA-COA-200087

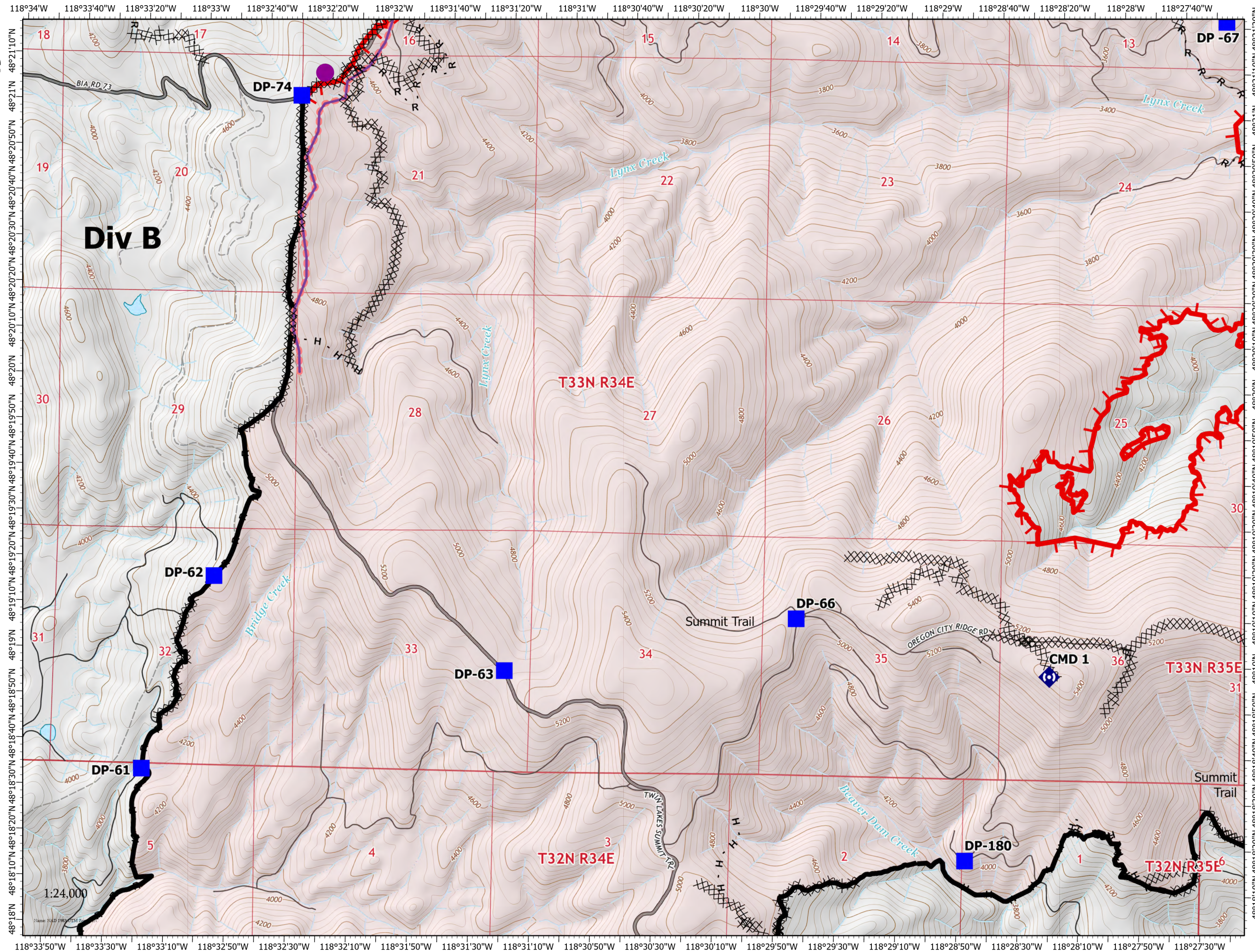
40,608 Acres
on 08/16/2021 at 1445

August 17, 2021



Page 13 of 17

- Helispot
- Drop Point
- ◆ Repeater
- ⊗ Completed Dozer Line
- H Completed Hand Line
- R Completed Road as Line
- Retardant Drop
- └ Fire Edge
- Contained Line
- Other
- Fire Perimeter
- State or Territory
- Main Route - Unimproved
- Local Road
- 4WD
- County or Equivalent



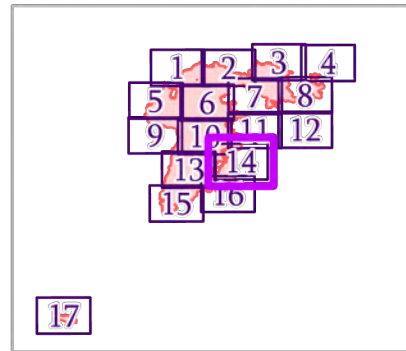
IAP MAP

Summit Trail Fire

WA-COA-200087

40,608 Acres
on 08/16/2021 at 1445


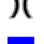








August 17, 2021

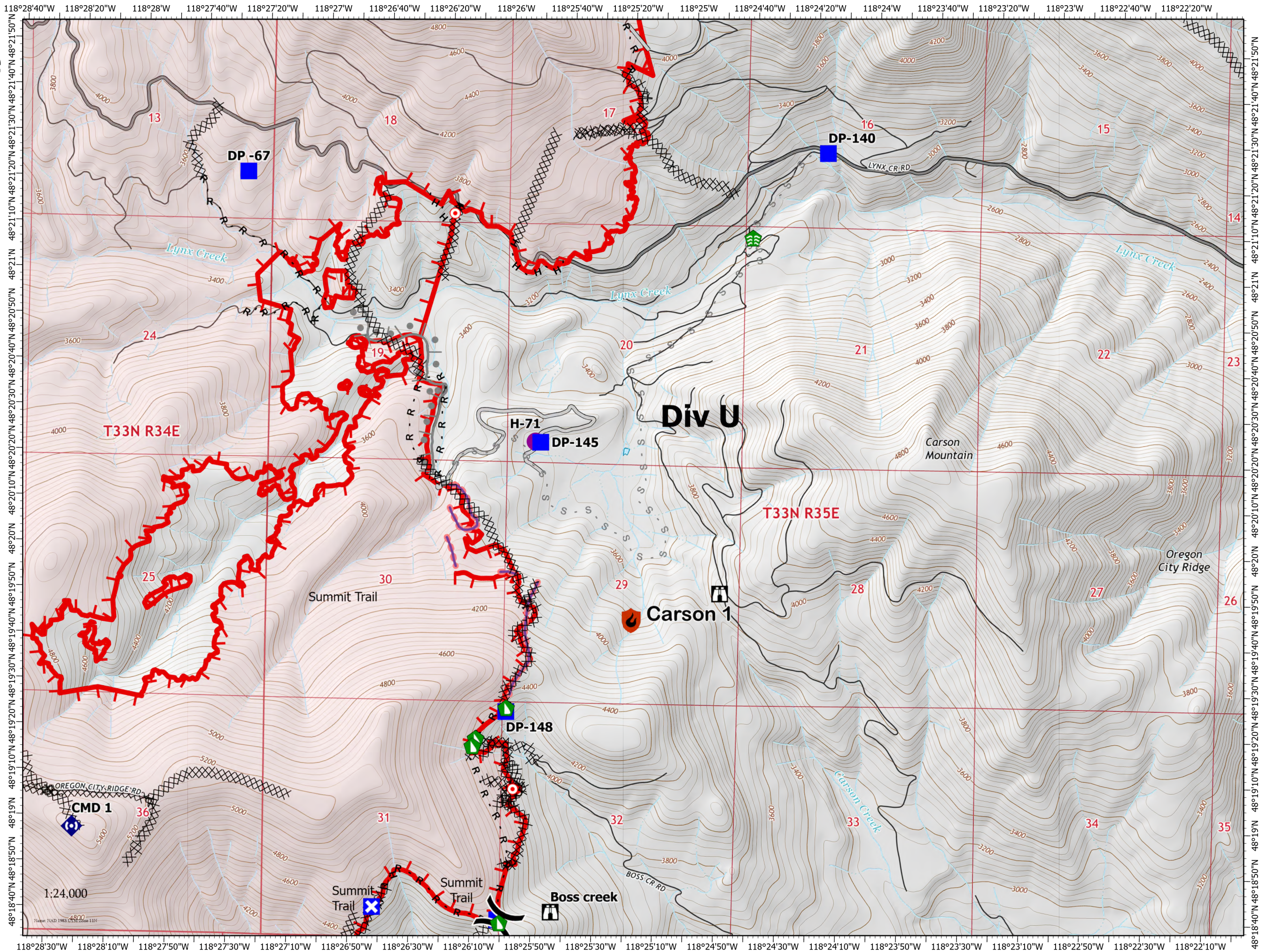
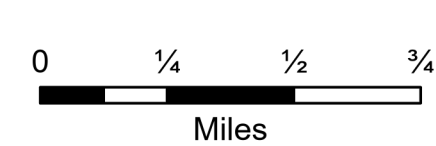


Page 14 of 17

New Starts

Containment

-  Out
-  Helispot
-  Division Break
-  Drop Point
-  Closure
-  Lookout
-  Hot Spot - Spot Fire
-  Stream Crossing
-  Dozer Push
-  Repeater
-  Completed Dozer Line
-  Completed Hand Line
-  Completed Road as Line
-  Planned Burnout
-  Planned Secondary Line
-  Access or Improved Road



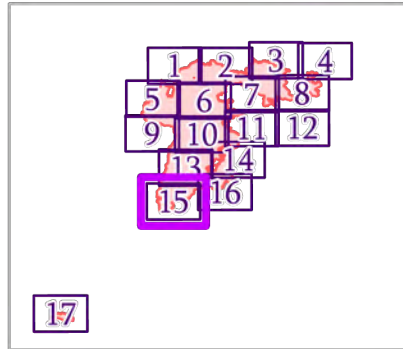
IAP MAP

Summit Trail Fire

WA-COA-200087

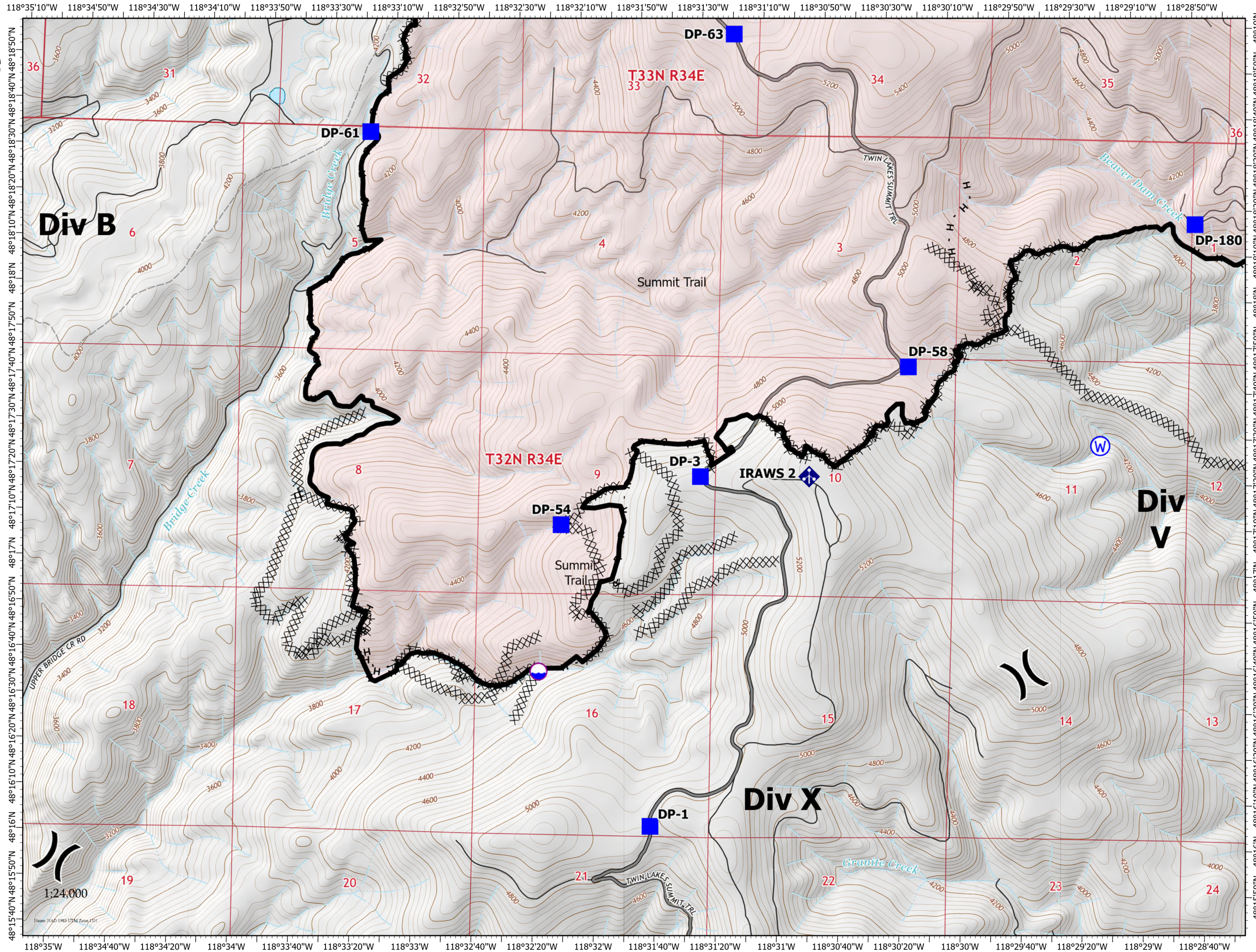
40,608 Acres
on 08/16/2021 at 1445

August 17, 2021



Page 15 of 17

- Dip Site
- Division Break
- Drop Point
- Mobile Weather Unit
- Water Source
- Completed Dozer Line
- Completed Hand Line
- Completed Road as Line
- Contained Line
- Other
- Fire Perimeter
- State or Territory
- Main Route - Unimproved
- Local Road
- 4WD
- County or Equivalent



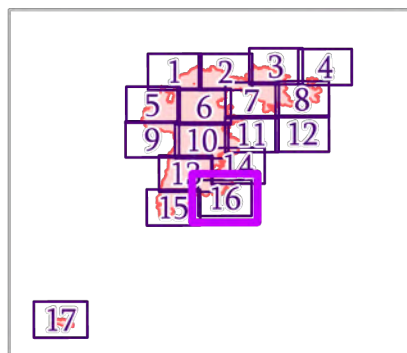
IAP MAP

Summit Trail Fire

WA-COA-200087

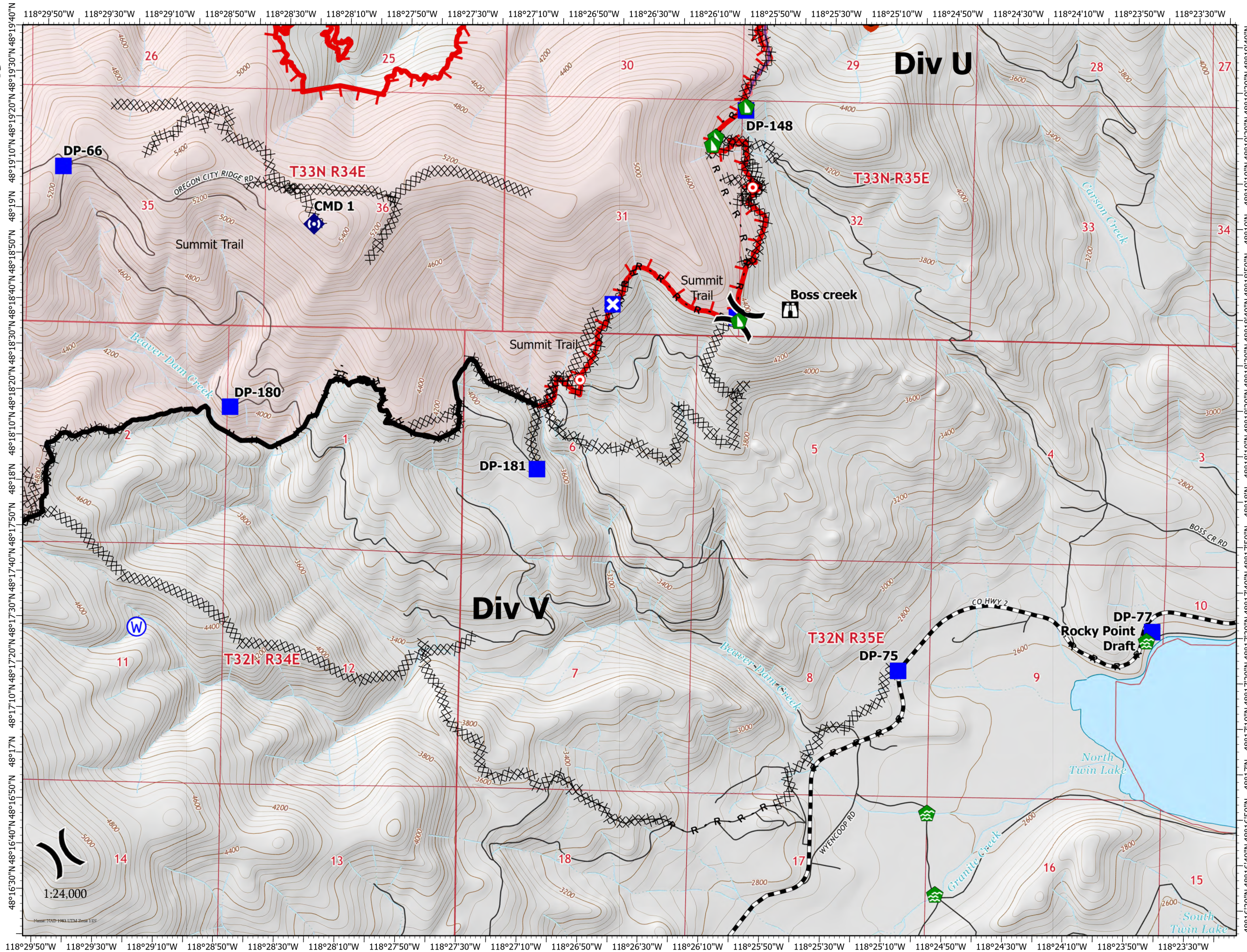
40,608 Acres
on 08/16/2021 at 1445

August 17, 2021



Page 16 of 17

- Division Break
 - Drop Point
 - Closure
 - Lookout
 - Hot Spot - Spot Fire
 - Water Development or Draft Site
 - Dozer Push
 - Repeater
 - Water Source
 - Completed Dozer Line
 - Completed Hand Line
 - Completed Road as Line
 - Retardant Drop
 - Fire Edge
 - Contained Line
 - Other
 - Fire Perimeter
 - State or Territory
 - Main Route - Improved
- 1:24,000
-
- Miles



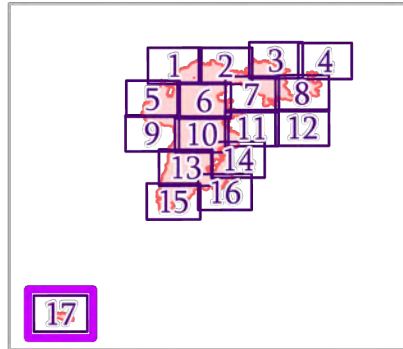
IAP MAP

Summit Trail Fire

WA-COA-200087

40,608 Acres
on 08/16/2021 at 1445

August 17, 2021



Page 17 of 17

- Drop Point
- S Staging Area
- Comm Tower
- 📍 Resource Location
- ☠️ Hazard
- Fire Perimeter
- State or Territory
- Main Route - Improved
- Local Connector
- Local Road
- County or Equivalent

