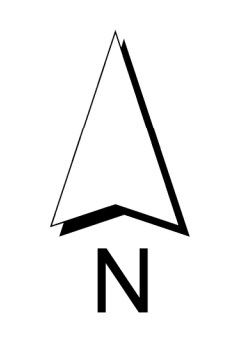
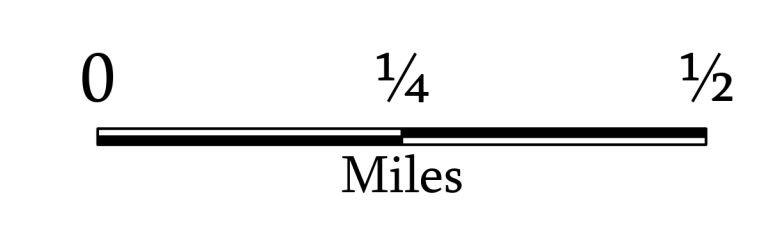


Operations Map
Upper Lime Creek
WA-COA-200116
 August 17, 2021

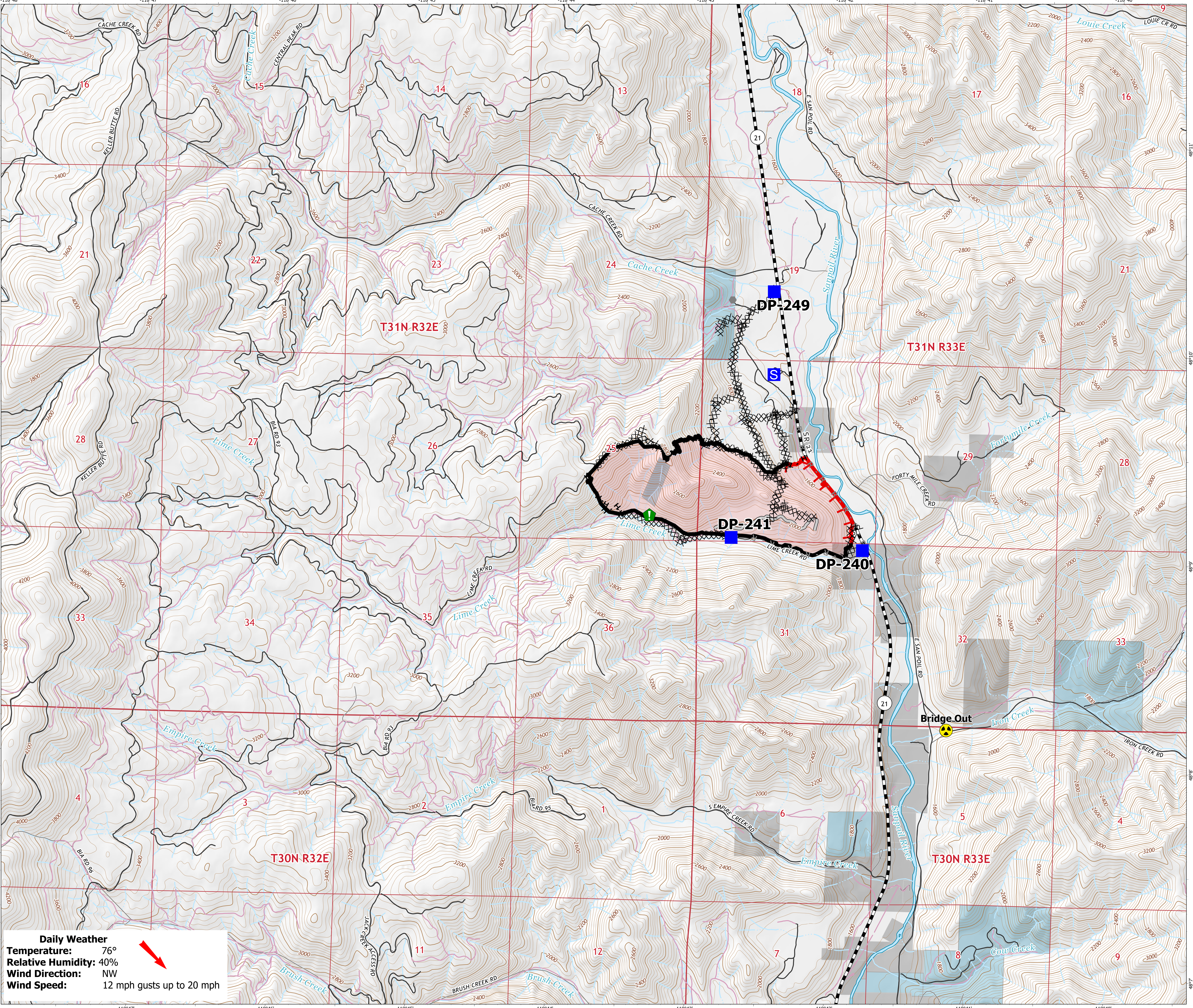


376 acres on 08/13/2021 at 2340

- Drop Point
- Staging Area
- Comm Tower
- Resource Location
- Hazard
- ⊗ Completed Dozer Line
- ⊗ Completed Hand Line
- ⊗ Completed Mixed Construction Line
- ⊗ Completed Road as Line
- ⊗ Planned Road as Line
- Access or Improved Road
- Fire Edge
- Contained Line
- Fire Perimeter
- Driveable
- Not Driveable
- Local Road



1:10,000



Daily Weather
Temperature: 76°
Relative Humidity: 40%
Wind Direction: NW
Wind Speed: 12 mph gusts up to 20 mph