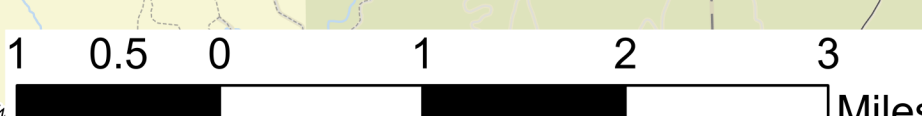


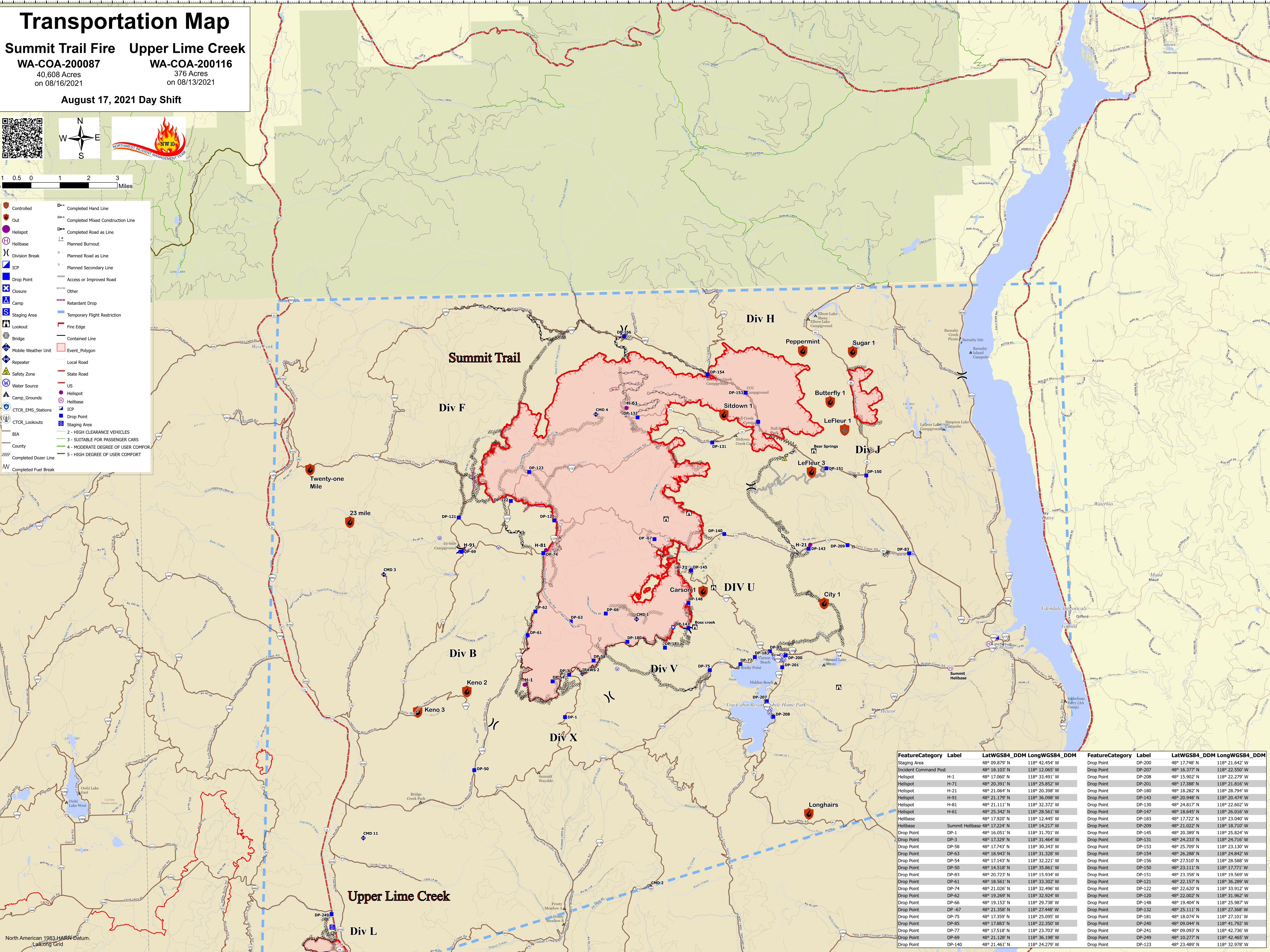
Transportation Map

Summit Trail Fire Upper Lime Creek
WA-COA-200087 WA-COA-200116
 40,608 Acres 376 Acres
 on 08/16/2021 on 08/13/2021

August 17, 2021 Day Shift



	Controlled		Completed Hand Line
	Out		Completed Mixed Construction Line
	Helispot		Completed Road as Line
	Helibase		Planned Burnout
	Division Break		Planned Road as Line
	ICP		Planned Secondary Line
	Drop Point		Access or Improved Road
	Closure		Other
	Camp		Retardant Drop
	Staging Area		Temporary Flight Restriction
	Lookout		Fire Edge
	Bridge		Contained Line
	Mobile Weather Unit		Event Polygon
	Repeater		Local Road
	Safety Zone		State Road
	Water Source		US
	Camp_Grounds		Helispot
	CTCR_EMS_Stations		Helibase
	CTCR_Lookouts		ICP
	BIA		Drop Point
	County		Staging Area
	Completed Dozer Line		2 - HIGH CLEARANCE VEHICLES
	Completed Fuel Break		3 - SUITABLE FOR PASSENGER CARS
			4 - MODERATE DEGREE OF USER COMFORT
			5 - HIGH DEGREE OF USER COMFORT



FeatureCategory	Label	LatWGS84_DDM	LongWGS84_DDM	FeatureCategory	Label	LatWGS84_DDM	LongWGS84_DDM
Staging Area	DP-200	48° 09.879' N	118° 42.454' W	Drop Point	DP-200	48° 17.748' N	118° 21.642' W
Incident Command Post	H-1	48° 18.103' N	118° 12.065' W	Drop Point	DP-207	48° 16.377' N	118° 22.550' W
Helispot	H-71	48° 17.050' N	118° 33.491' W	Drop Point	DP-208	48° 15.902' N	118° 22.279' W
Helispot	H-21	48° 20.054' N	118° 20.398' W	Drop Point	DP-201	48° 17.388' N	118° 21.615' W
Helispot	H-91	48° 21.179' N	118° 36.098' W	Drop Point	DP-180	48° 18.282' N	118° 28.794' W
Helispot	H-81	48° 21.111' N	118° 32.372' W	Drop Point	DP-143	48° 20.948' N	118° 20.474' W
Helispot	H-61	48° 25.342' N	118° 28.561' W	Drop Point	DP-140	48° 24.817' N	118° 22.602' W
Helibase	Summit Helibase	48° 17.920' N	118° 12.445' W	Drop Point	DP-147	48° 18.645' N	118° 26.016' W
Drop Point	DP-1	48° 16.051' N	118° 31.701' W	Drop Point	DP-183	48° 17.722' N	118° 23.040' W
Drop Point	DP-3	48° 17.329' N	118° 31.464' W	Drop Point	DP-209	48° 21.022' N	118° 18.710' W
Drop Point	DP-58	48° 17.743' N	118° 30.343' W	Drop Point	DP-145	48° 20.389' N	118° 25.824' W
Drop Point	DP-63	48° 18.943' N	118° 31.328' W	Drop Point	DP-131	48° 24.233' N	118° 24.716' W
Drop Point	DP-54	48° 17.143' N	118° 32.221' W	Drop Point	DP-153	48° 25.709' N	118° 23.130' W
Drop Point	DP-50	48° 14.518' N	118° 35.861' W	Drop Point	DP-154	48° 26.288' N	118° 24.842' W
Drop Point	DP-83	48° 20.723' N	118° 15.934' W	Drop Point	DP-156	48° 27.510' N	118° 28.588' W
Drop Point	DP-61	48° 18.561' N	118° 33.302' W	Drop Point	DP-150	48° 23.111' N	118° 17.771' W
Drop Point	DP-74	48° 21.026' N	118° 32.496' W	Drop Point	DP-151	48° 23.111' N	118° 19.569' W
Drop Point	DP-62	48° 19.269' N	118° 32.924' W	Drop Point	DP-122	48° 22.157' N	118° 36.289' W
Drop Point	DP-66	48° 19.153' N	118° 29.738' W	Drop Point	DP-121	48° 22.620' N	118° 31.912' W
Drop Point	DP-67	48° 21.358' N	118° 27.448' W	Drop Point	DP-120	48° 22.002' N	118° 31.962' W
Drop Point	DP-75	48° 17.359' N	118° 25.095' W	Drop Point	DP-148	48° 19.404' N	118° 25.987' W
Drop Point	DP-85	48° 17.883' N	118° 22.350' W	Drop Point	DP-132	48° 25.111' N	118° 27.368' W
Drop Point	DP-77	48° 17.518' N	118° 23.703' W	Drop Point	DP-181	48° 18.074' N	118° 27.101' W
Drop Point	DP-69	48° 21.128' N	118° 36.198' W	Drop Point	DP-240	48° 09.044' N	118° 41.792' W
Drop Point	DP-140	48° 21.461' N	118° 24.279' W	Drop Point	DP-241	48° 09.093' N	118° 42.736' W
				Drop Point	DP-249	48° 10.277' N	118° 42.465' W
				Drop Point	DP-123	48° 23.489' N	118° 32.978' W

North American 1983 HARN Datum
 UTM Long Grid