

IAP MAP

Summit Trail Fire

WA-COA-200087

42,754 Acres
on 08/17/2021 at 1000

August 18, 2021

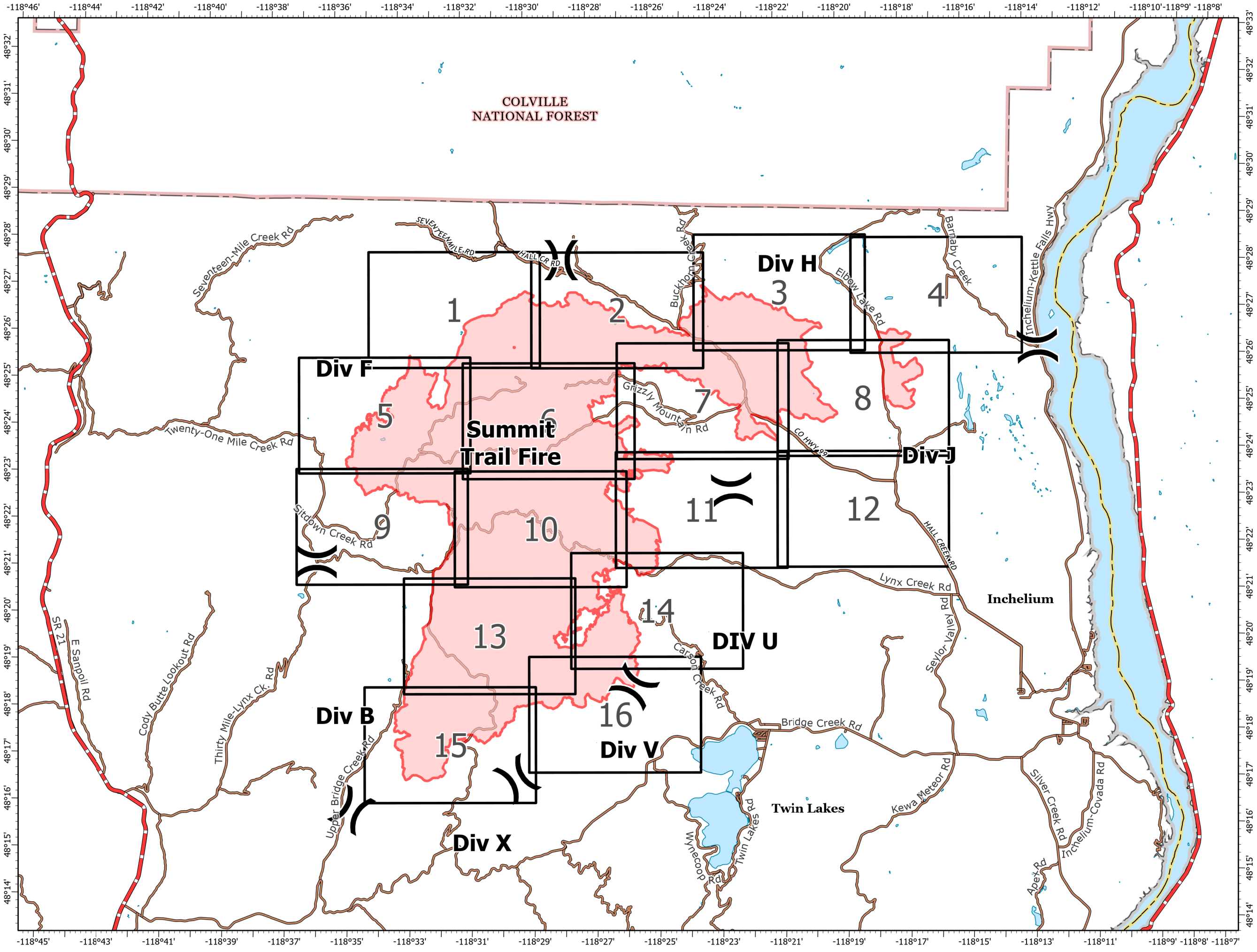


- (X) Division Break
- Fire Perimeter
- Additional Rd Selections
- Comprehensive Roads Hosted
- Owner
- BIA
- City
- County
- Other Drive-able
- Other Not Drive-able
- Private
- State
- Tribe
- Highway

Daily Weather
Temperature: 71°
Relative Humidity: 35%
Wind Direction: NE
Wind Speed: 10 mph



1:140,000
NAD 1983
UTM 11N



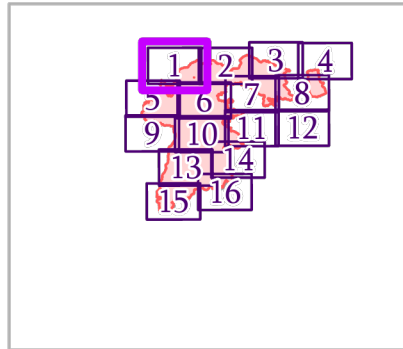
IAP MAP

Summit Trail Fire

WA-COA-200087

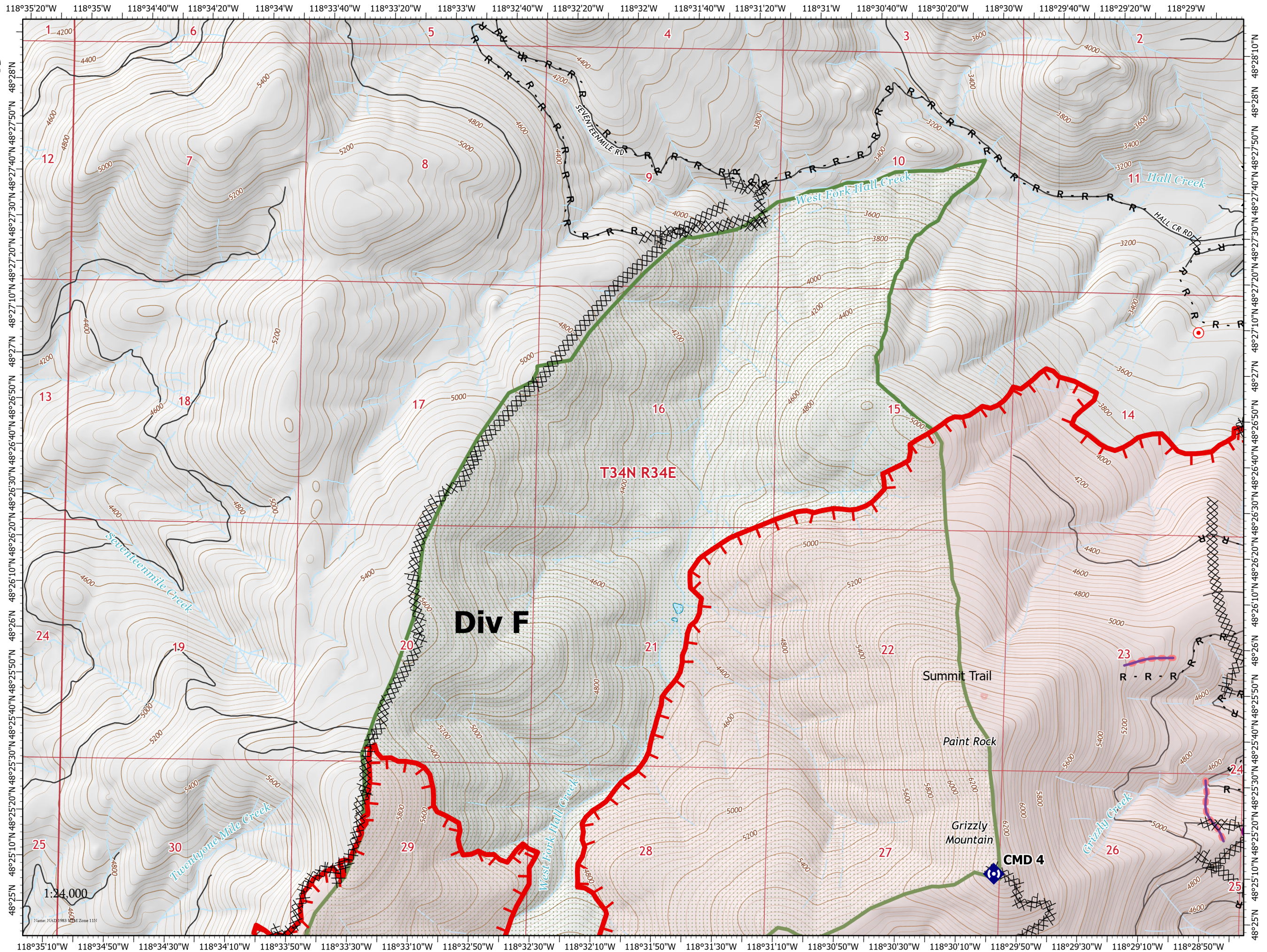
42,754 Acres
on 08/17/2021 at 1000

August 18, 2021



Page 1 of 16

- Helispot
-) Division Break
- Drop Point
- Hot Spot - Spot Fire
- ⬢ Repeater
- ⊗ Completed Dozer Line
- R Completed Road as Line
- Retardant Drop
- ┌ Fire Edge
- Fire Perimeter
- State or Territory
- Local Road
- County or Equivalent
- Wilderness Area



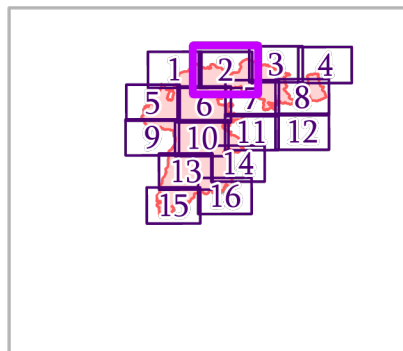
IAP MAP

Summit Trail Fire

WA-COA-200087

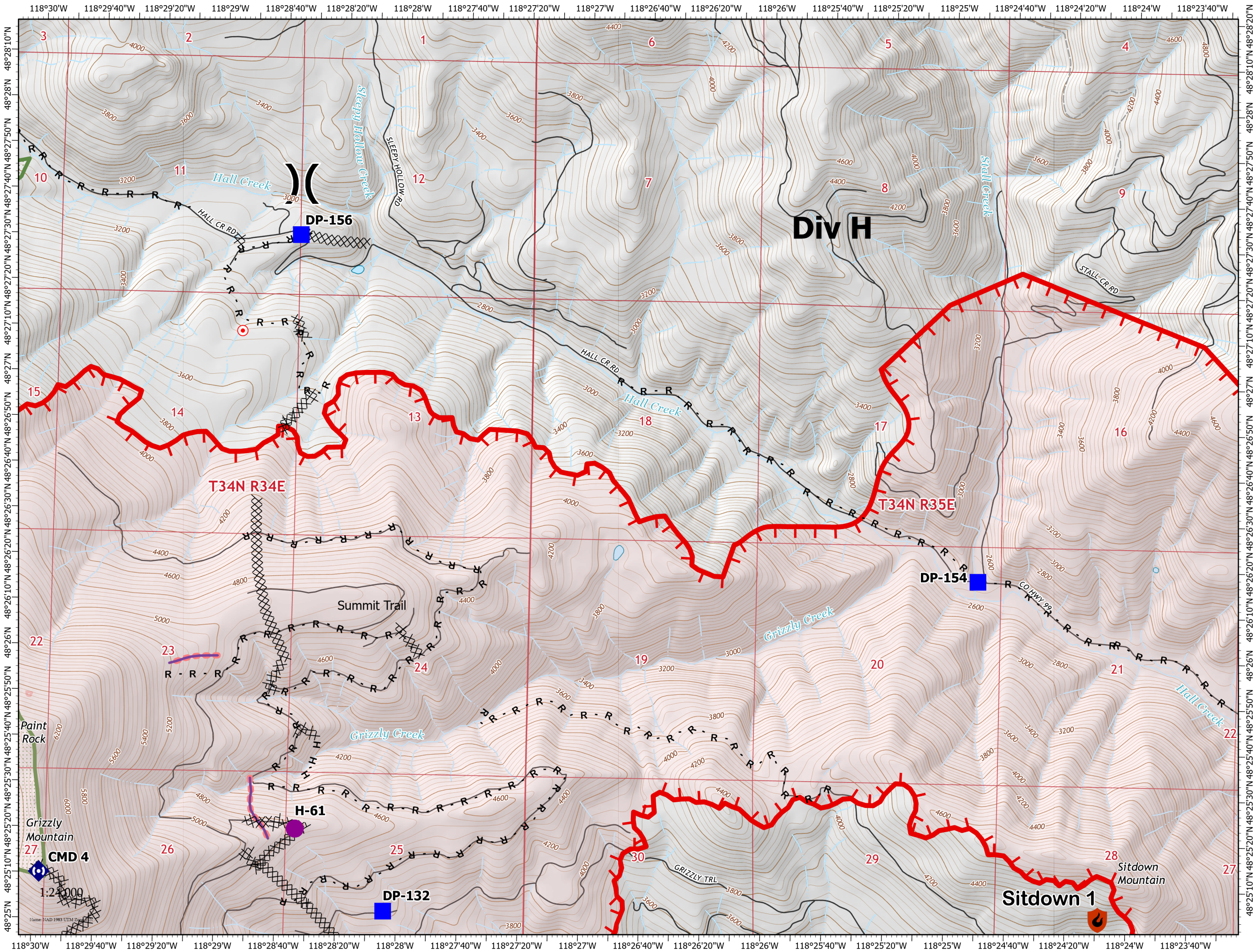
42,754 Acres
on 08/17/2021 at 1000

August 18, 2021



Page 2 of 16

- Helispot
-) Division Break
- DP-156 Drop Point
- Hot Spot - Spot Fire
- ◆ Repeater
- Completed Dozer Line
- Completed Hand Line
- Completed Road as Line
- Retardant Drop
- Fire Edge
- Fire Perimeter
- State or Territory
- Local Road
- 4WD
- County or Equivalent
- Wilderness Area



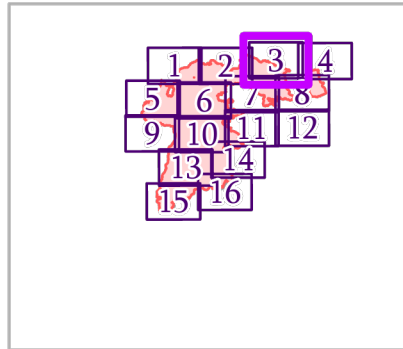
IAP MAP

Summit Trail Fire

WA-COA-200087

42,754 Acres
on 08/17/2021 at 1000





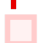




August 18, 2021

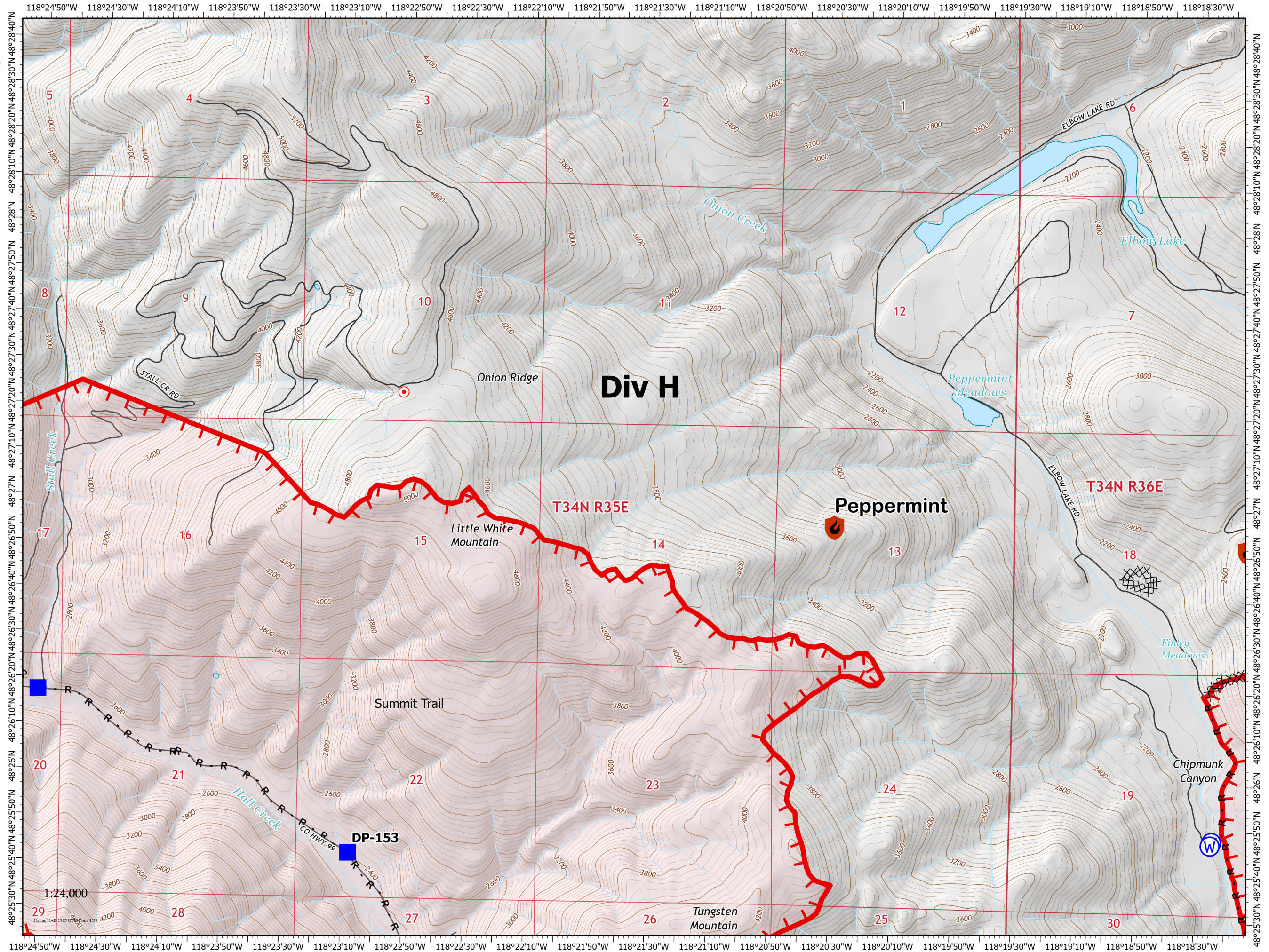


Page 3 of 16

New Starts

Containment

-  Out
-  Drop Point
-  Hot Spot - Spot Fire
-  Water Source
-  Completed Dozer Line
-  Completed Road as Line
-  Fire Edge
-  Fire Perimeter
-  State or Territory
-  Local Road
-  4WD
-  County or Equivalent



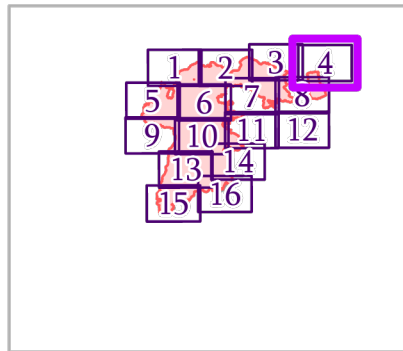
IAP MAP

Summit Trail Fire

WA-COA-200087

42,754 Acres
on 08/17/2021 at 1000





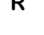





August 18, 2021

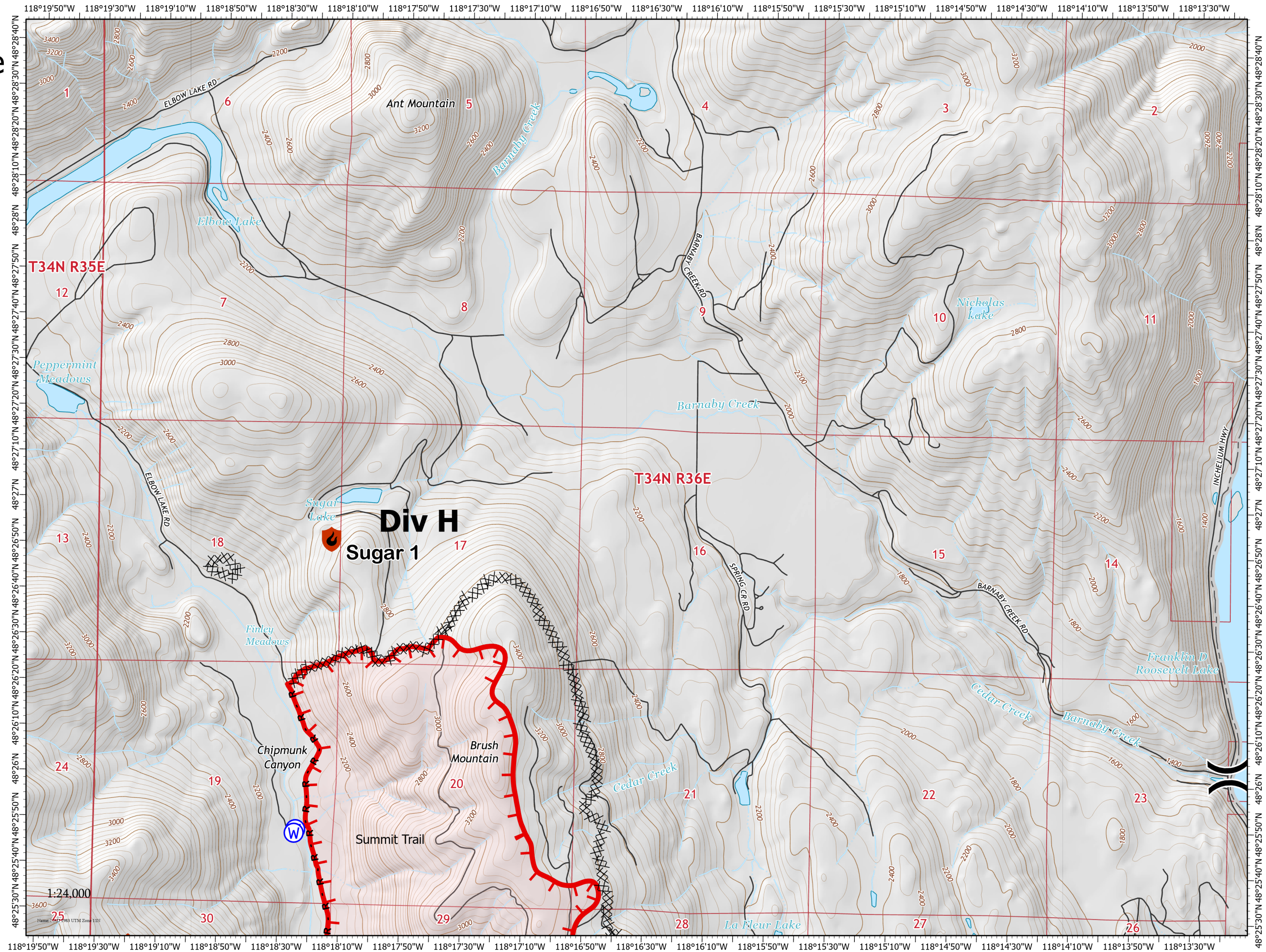


Page 4 of 16

New Starts

Containment

-  Out
-  Division Break
-  Water Source
-  Completed Dozer Line
-  Completed Road as Line
-  Fire Edge
-  Fire Perimeter
-  State or Territory
-  Local Road
-  County or Equivalent



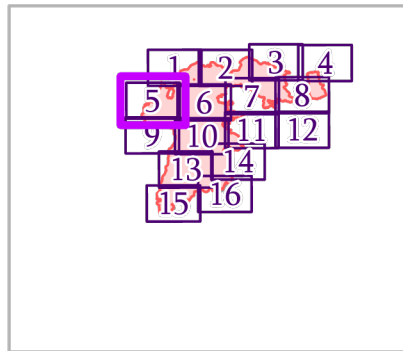
IAP MAP

Summit Trail Fire

WA-COA-200087

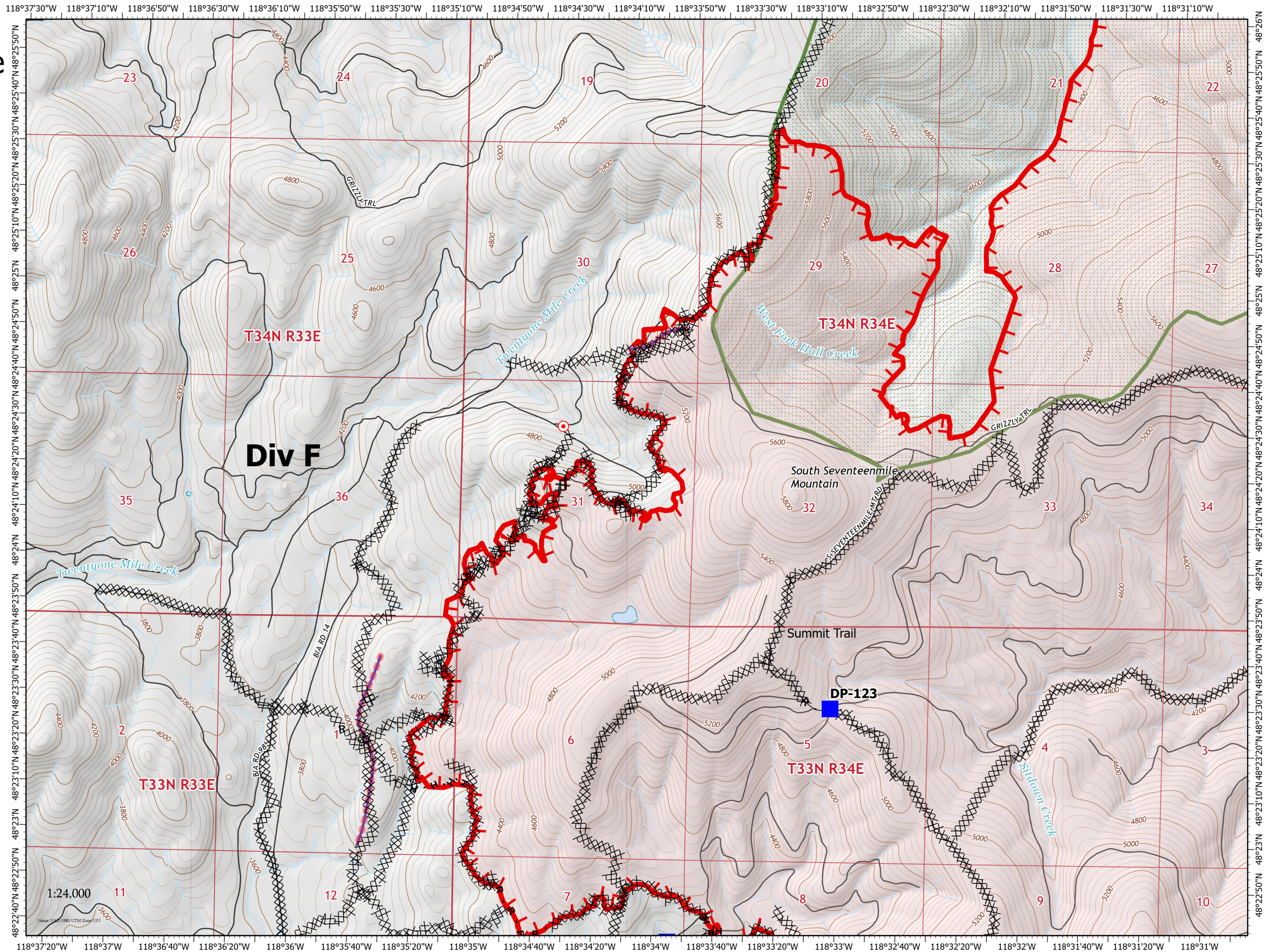
42,754 Acres
on 08/17/2021 at 1000

August 18, 2021



Page 5 of 16

- Drop Point
- Hot Spot - Spot Fire
- Completed Dozer Line
- Completed Hand Line
- Completed Road as Line
- Retardant Drop
- Fire Edge
- Fire Perimeter
- State or Territory
- Local Road
- County or Equivalent
- Wilderness Area



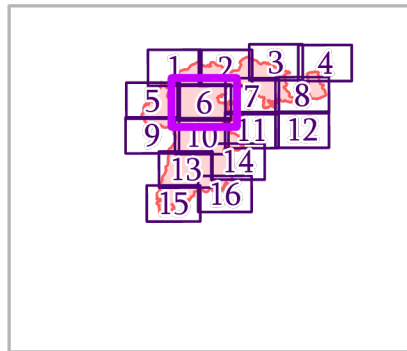
IAP MAP

Summit Trail Fire

WA-COA-200087

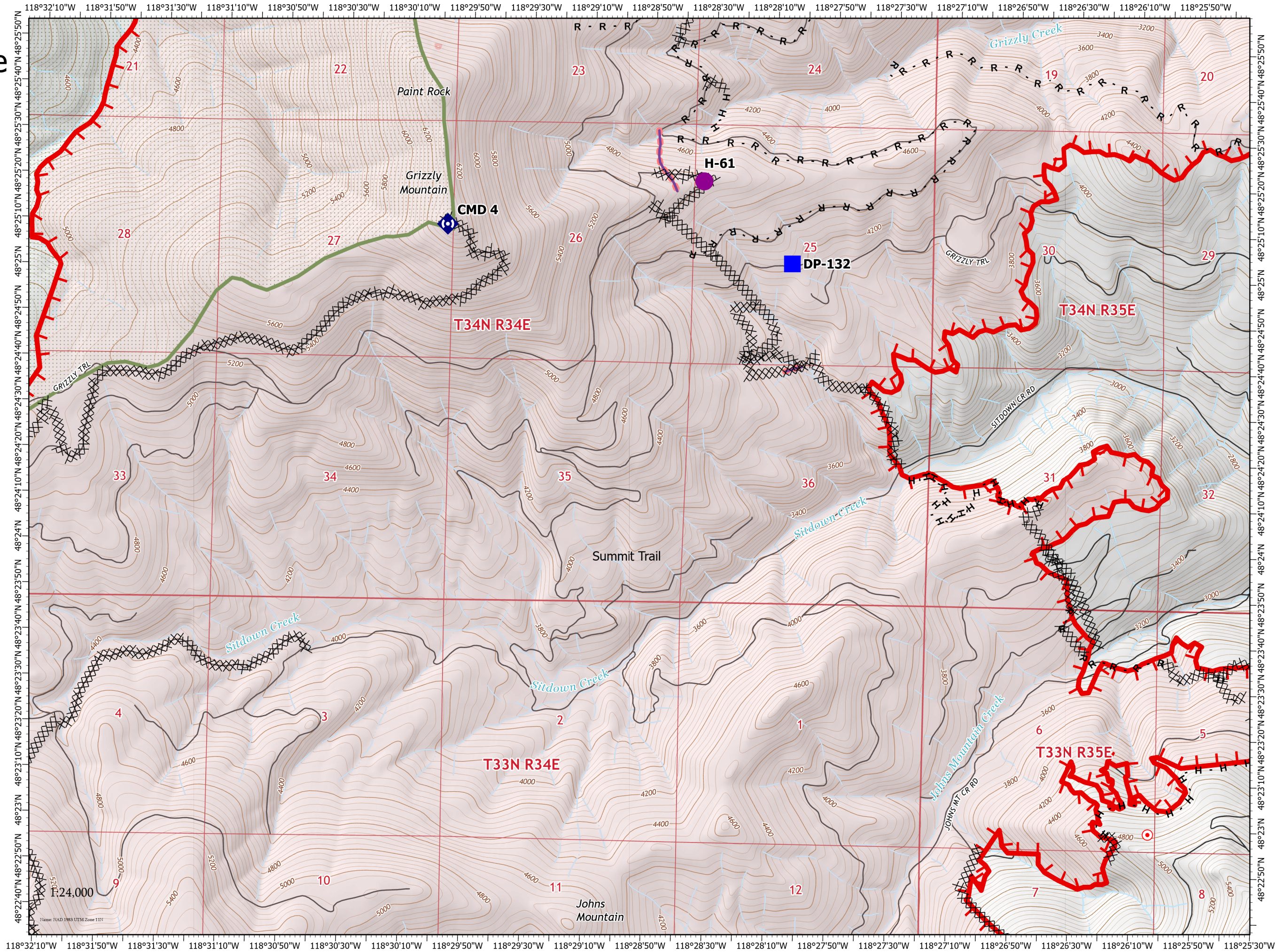
42,754 Acres
on 08/17/2021 at 1000

August 18, 2021



Page 6 of 16

- Helispot
- Drop Point
- Hot Spot - Spot Fire
- ◆ Repeater
- ⊗ Completed Dozer Line
- H Completed Hand Line
- R Completed Road as Line
- Retardant Drop
- ┌ Fire Edge
- Fire Perimeter
- ▭ State or Territory
- Local Road
- ▭ County or Equivalent
- ▭ Wilderness Area



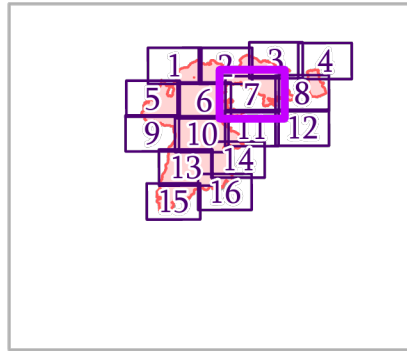
IAP MAP

Summit Trail Fire

WA-COA-200087

42,754 Acres
on 08/17/2021 at 1000


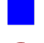



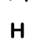
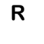








August 18, 2021

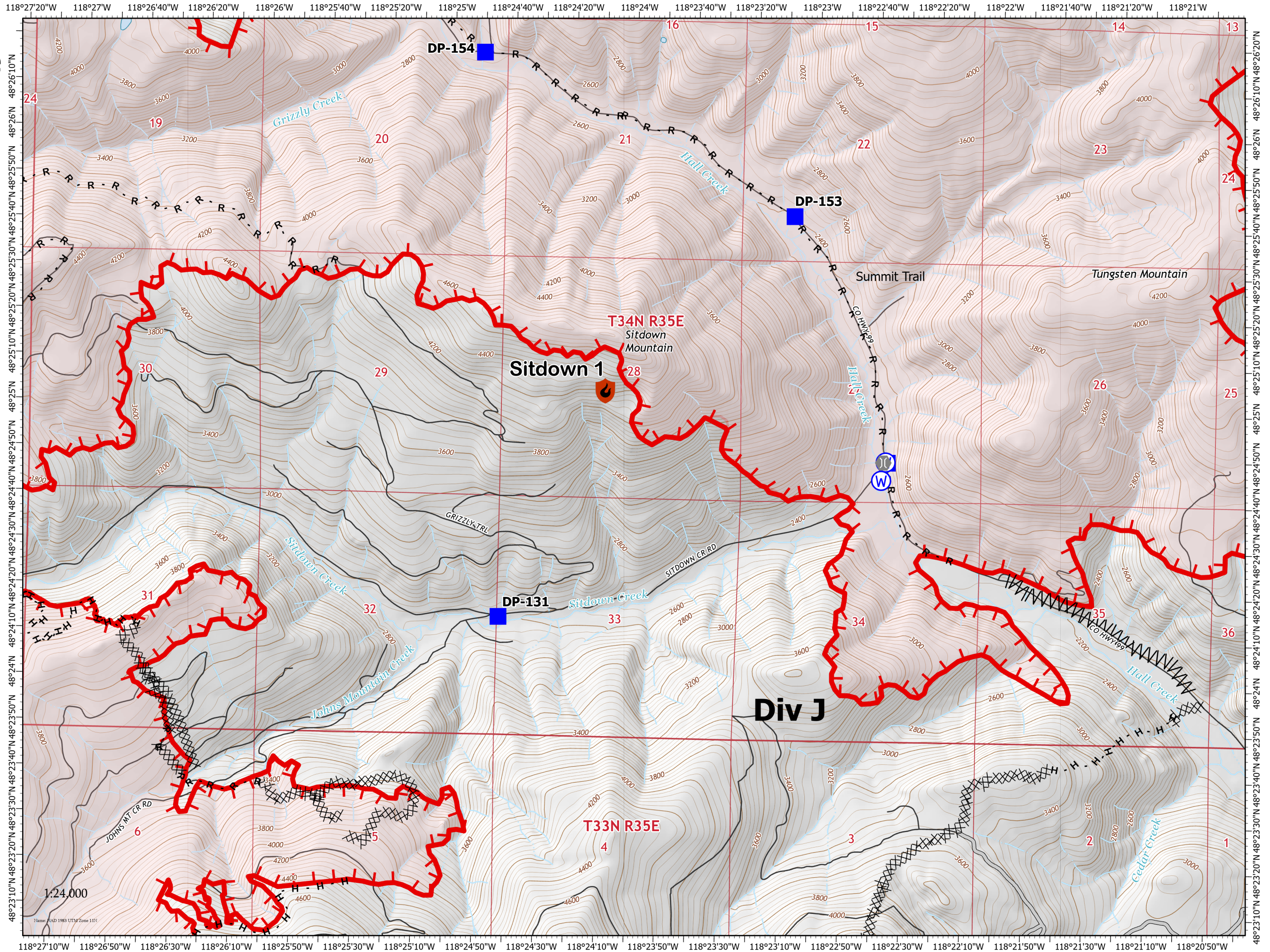


Page 7 of 16

New Starts

Containment

-  Out
-  Drop Point
-  Hot Spot - Spot Fire
-  Bridge
-  Water Source
-  Completed Dozer Line
-  Completed Fuel Break
-  Completed Hand Line
-  Completed Road as Line
-  Access or Improved Road
-  Fire Edge
-  Fire Perimeter
-  State or Territory
-  Local Road
-  County or Equivalent



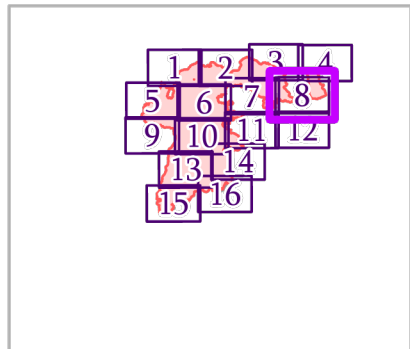
IAP MAP

Summit Trail Fire

WA-COA-200087

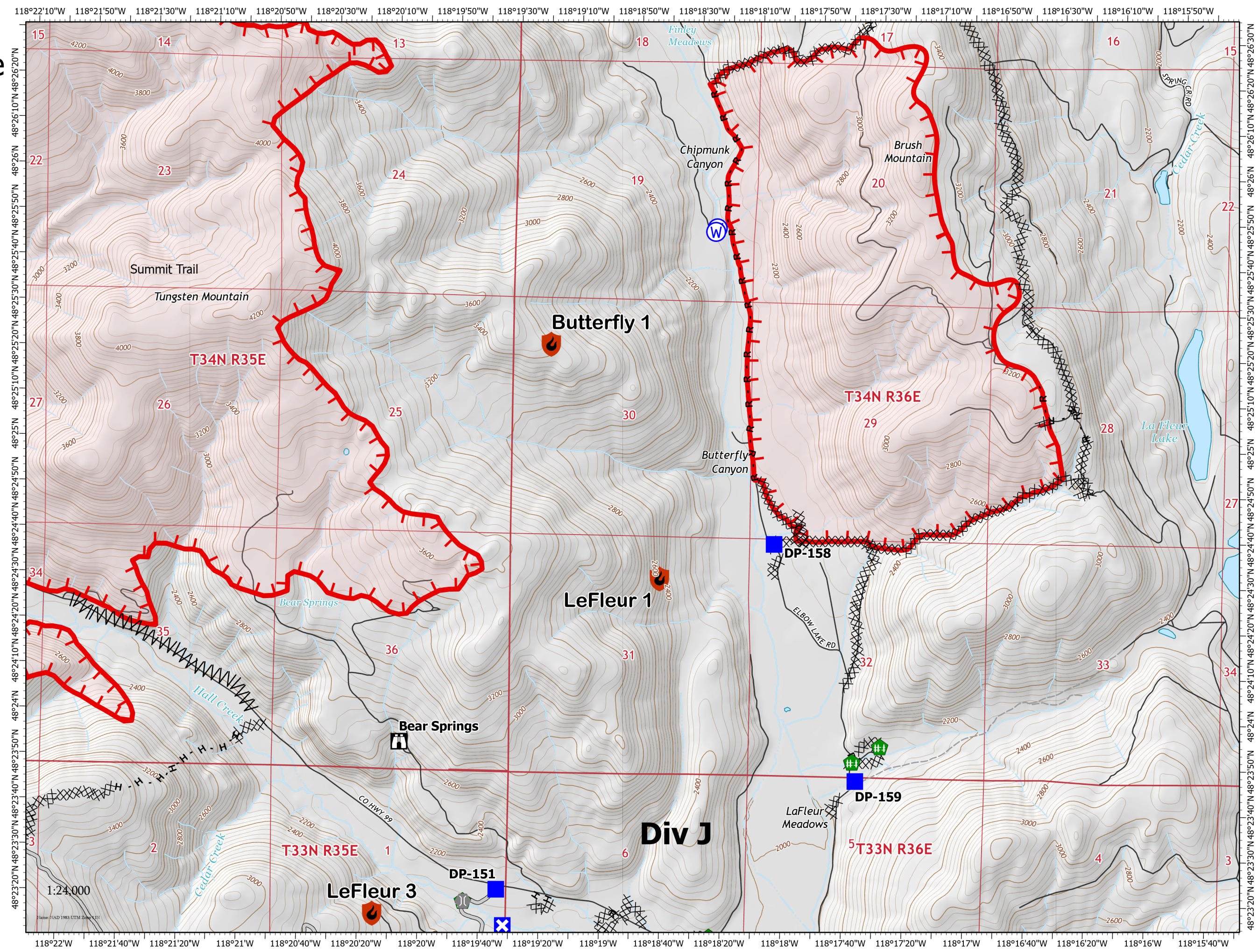
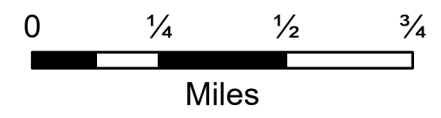
42,754 Acres
on 08/17/2021 at 1000

August 18, 2021



Page 8 of 16

- New Starts**
- Out
 - Drop Point
 - Closure
 - Lookout
 - Bridge
 - Water Development or Draft Site
 - Fence - Cut/Damaged
 - Water Source
- Containment**
- Completed Dozer Line
 - Completed Fuel Break
 - Completed Hand Line
 - Completed Road as Line
 - Access or Improved Road
 - Fire Edge
 - Fire Perimeter
 - State or Territory



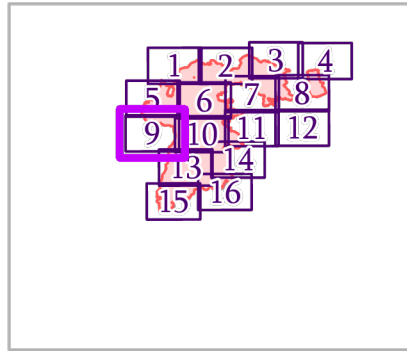
IAP MAP

Summit Trail Fire

WA-COA-200087

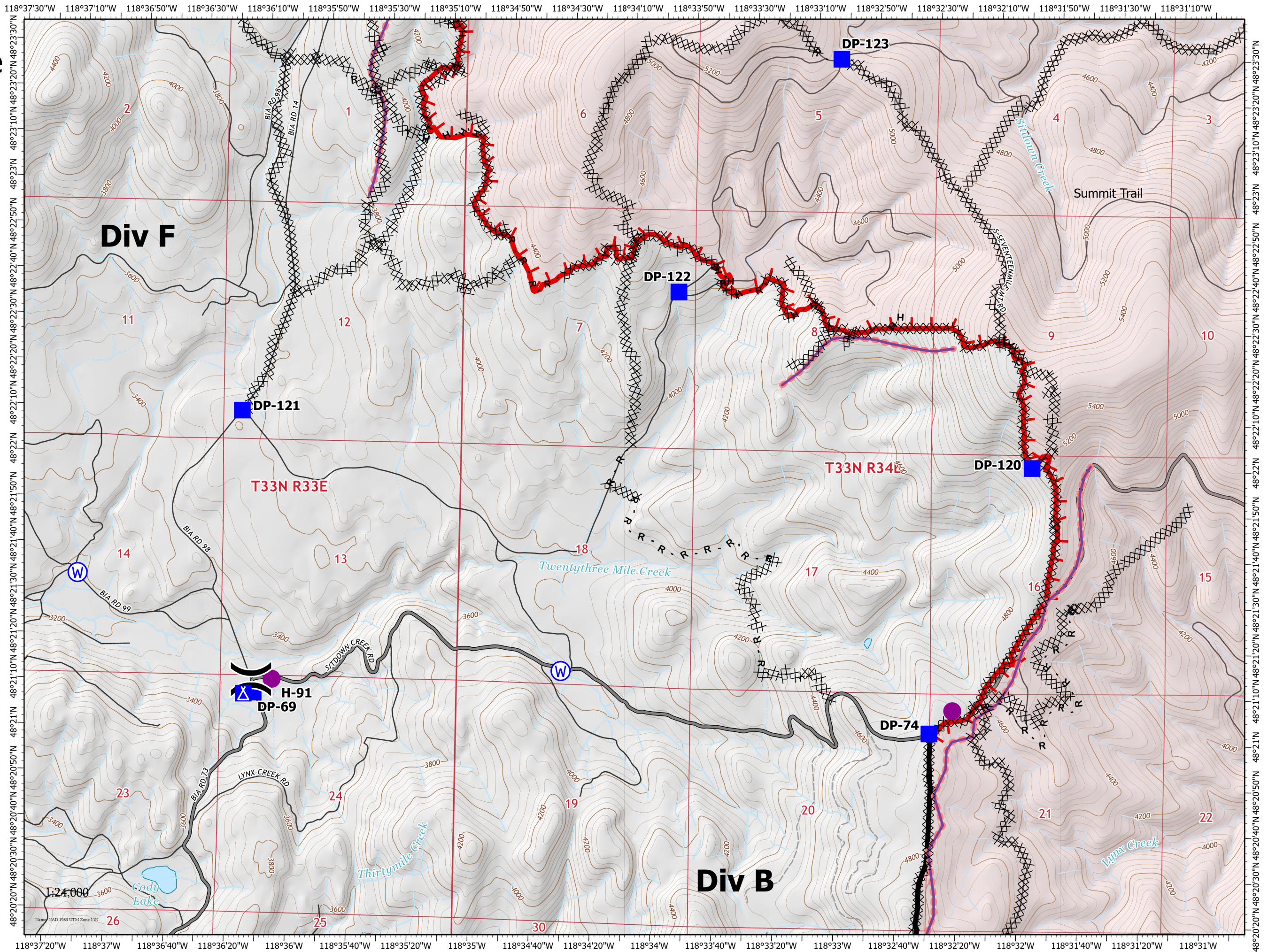
42,754 Acres
on 08/17/2021 at 1000

August 18, 2021



Page 9 of 16

- Helispot
- ⌘ Division Break
- Drop Point
- ⊠ Camp
- ⊙ Water Source
- ⊗ Completed Dozer Line
- H Completed Hand Line
- R Completed Road as Line
- Retardant Drop
- ┌ Fire Edge
- ▬ Contained Line
- ▭ Fire Perimeter
- State or Territory
- Main Route - Unimproved
- Local Road
- 4WD
- County or Equivalent



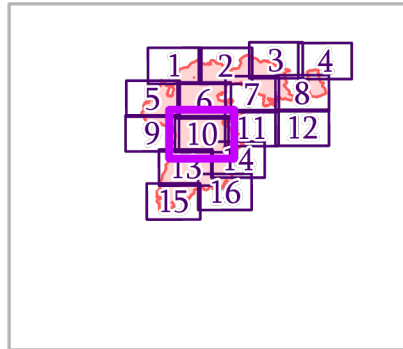
IAP MAP

Summit Trail Fire

WA-COA-200087

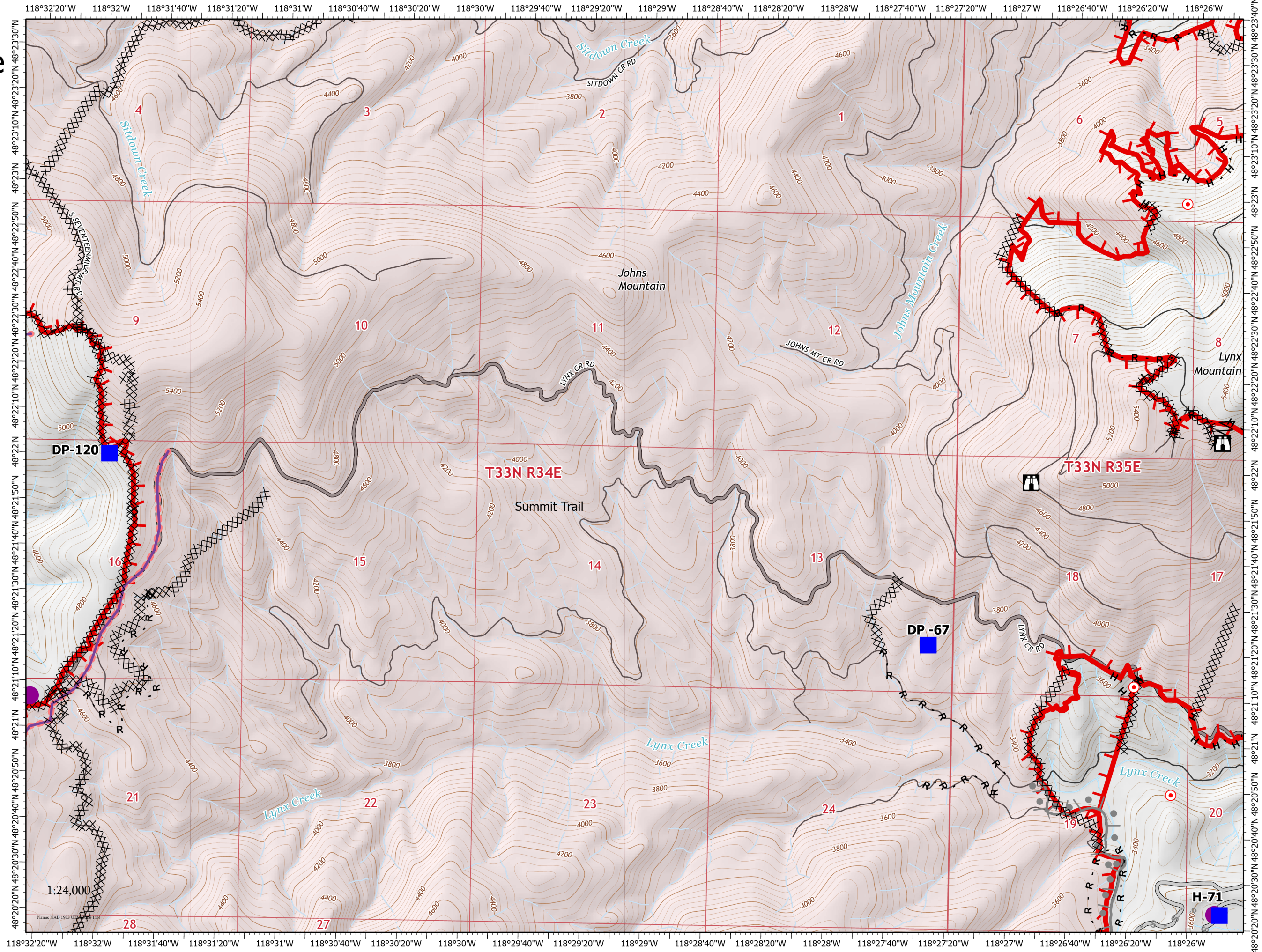
42,754 Acres
on 08/17/2021 at 1000

August 18, 2021



Page 10 of 16

- Helispot
 - Drop Point
 - Lookout
 - Hot Spot - Spot Fire
 - Structure Wrap
 - Completed Dozer Line
 - Completed Fuel Break
 - Completed Hand Line
 - Completed Road as Line
 - Planned Burnout
 - Planned Secondary Line
 - Access or Improved Road
 - Retardant Drop
 - Fire Edge
 - Fire Perimeter
 - State or Territory
 - Main Route - Unimproved
 - Local Road
 - 4WD
- 0 1/4 1/2 3/4
Miles



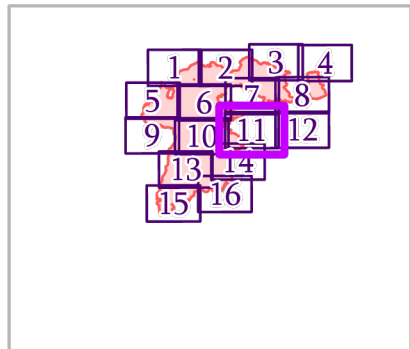
IAP MAP

Summit Trail Fire

WA-COA-200087

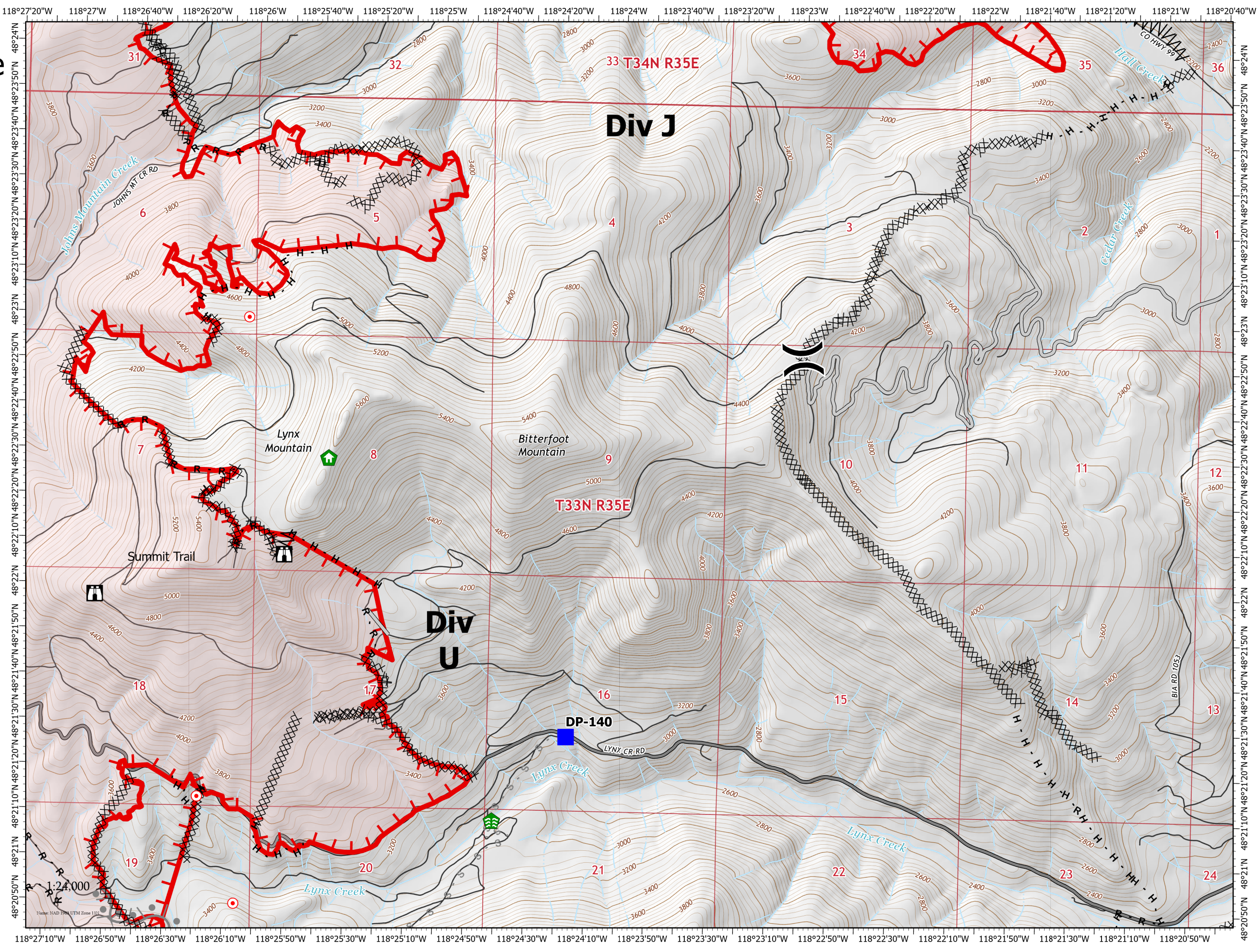
42,754 Acres
on 08/17/2021 at 1000

August 18, 2021



Page 11 of 16

- Division Break
- Drop Point
- Lookout
- Hot Spot - Spot Fire
- Structure Wrap
- Stream Crossing
- Completed Dozer Line
- Completed Fuel Break
- Completed Hand Line
- Completed Road as Line
- Planned Burnout
- Planned Secondary Line
- Access or Improved Road
- Fire Edge
- Fire Perimeter
- State or Territory
- Main Route - Unimproved
- Local Road
- County or Equivalent



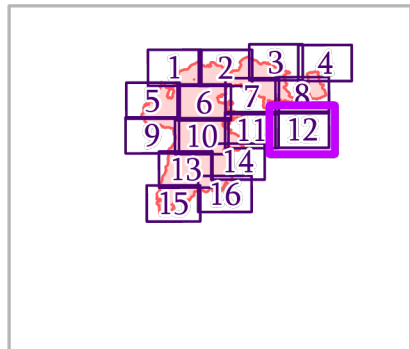
IAP MAP

Summit Trail Fire

WA-COA-200087

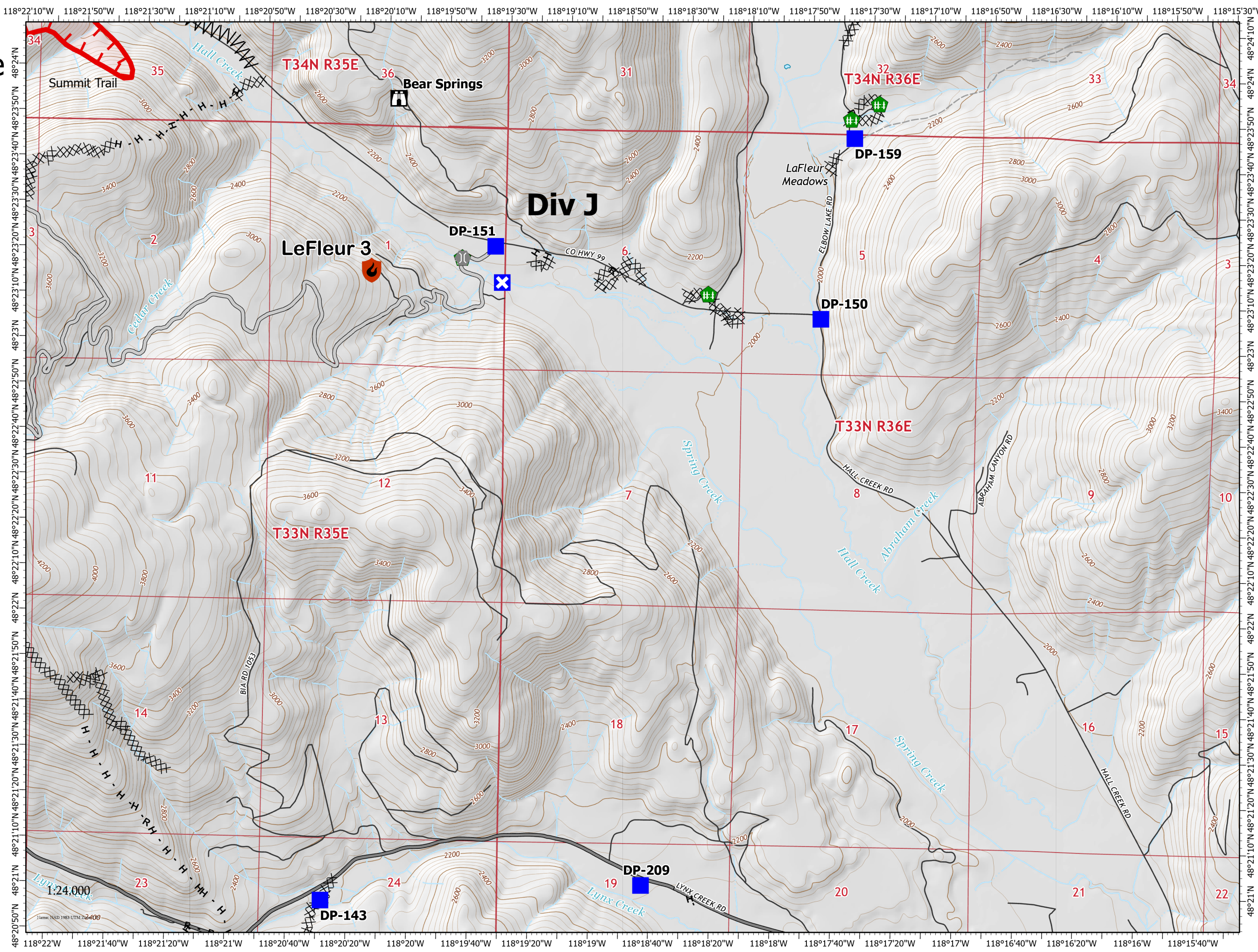
42,754 Acres
on 08/17/2021 at 1000

August 18, 2021



Page 12 of 16

- New Starts**
- Out
 - Drop Point
 - Closure
 - Lookout
 - Bridge
 - Water Development or Draft Site
 - Fence - Cut/Damaged
 - Completed Dozer Line
 - Completed Fuel Break
 - Completed Hand Line
 - Completed Road as Line
 - Access or Improved Road
 - Fire Edge
 - Fire Perimeter
 - State or Territory
 - Main Route - Unimproved



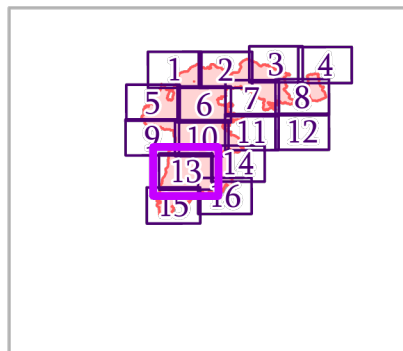
IAP MAP

Summit Trail Fire

WA-COA-200087

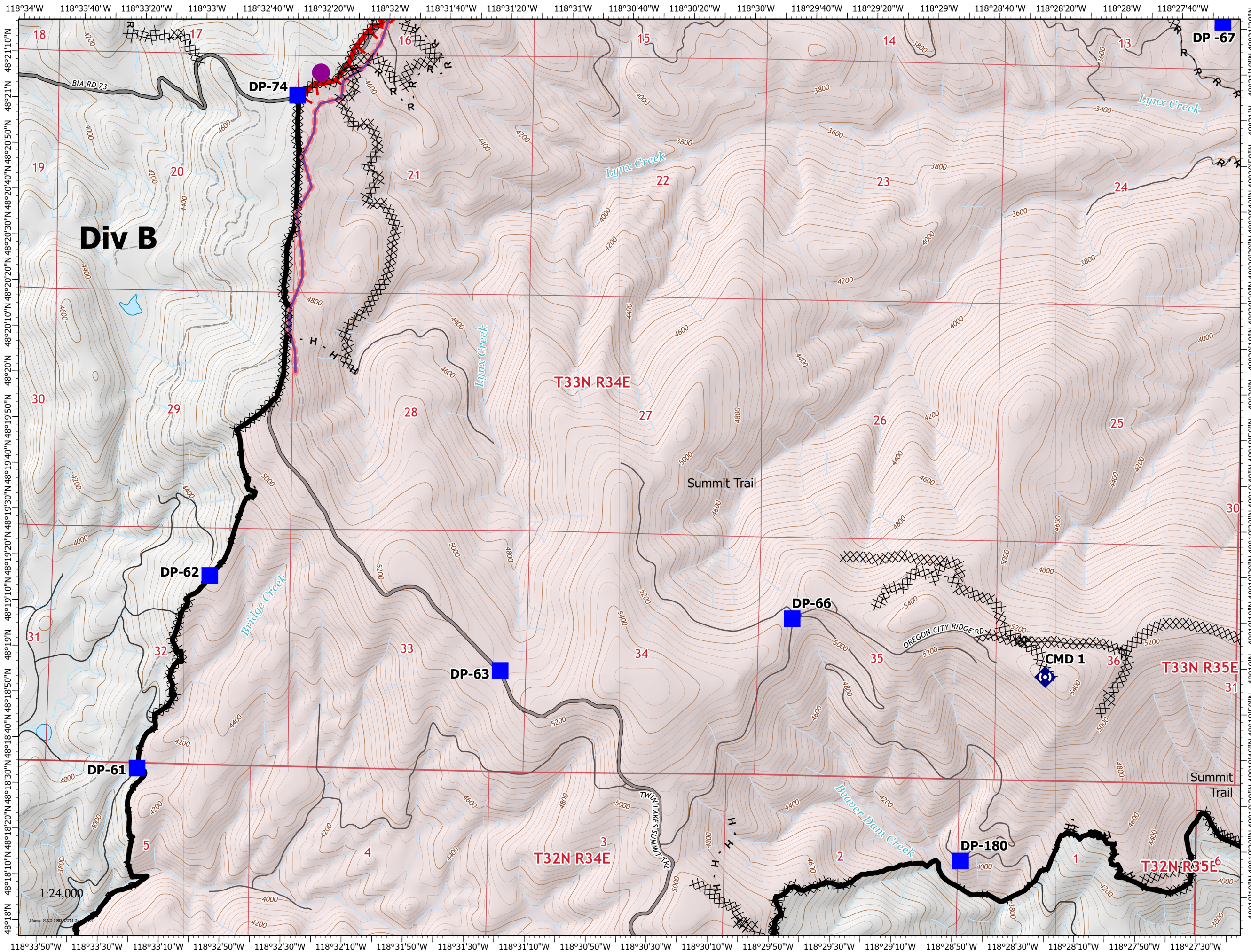
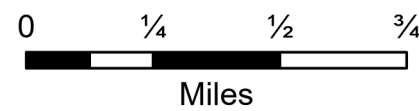
42,754 Acres
on 08/17/2021 at 1000

August 18, 2021



Page 13 of 16

- Helispot
- Drop Point
- ⬢ Repeater
- ⊗ Completed Dozer Line
- H Completed Hand Line
- R Completed Road as Line
- Retardant Drop
- └ Fire Edge
- Contained Line
- Other
- Fire Perimeter
- ▭ State or Territory
- Main Route - Unimproved
- Local Road
- - - 4WD
- ▭ County or Equivalent



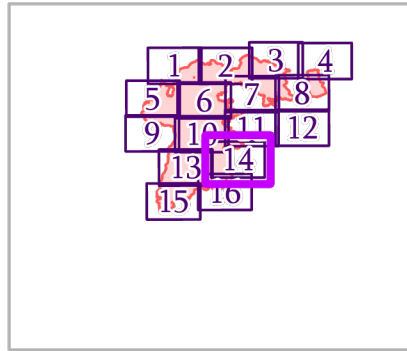
IAP MAP

Summit Trail Fire

WA-COA-200087

42,754 Acres
on 08/17/2021 at 1000

August 18, 2021

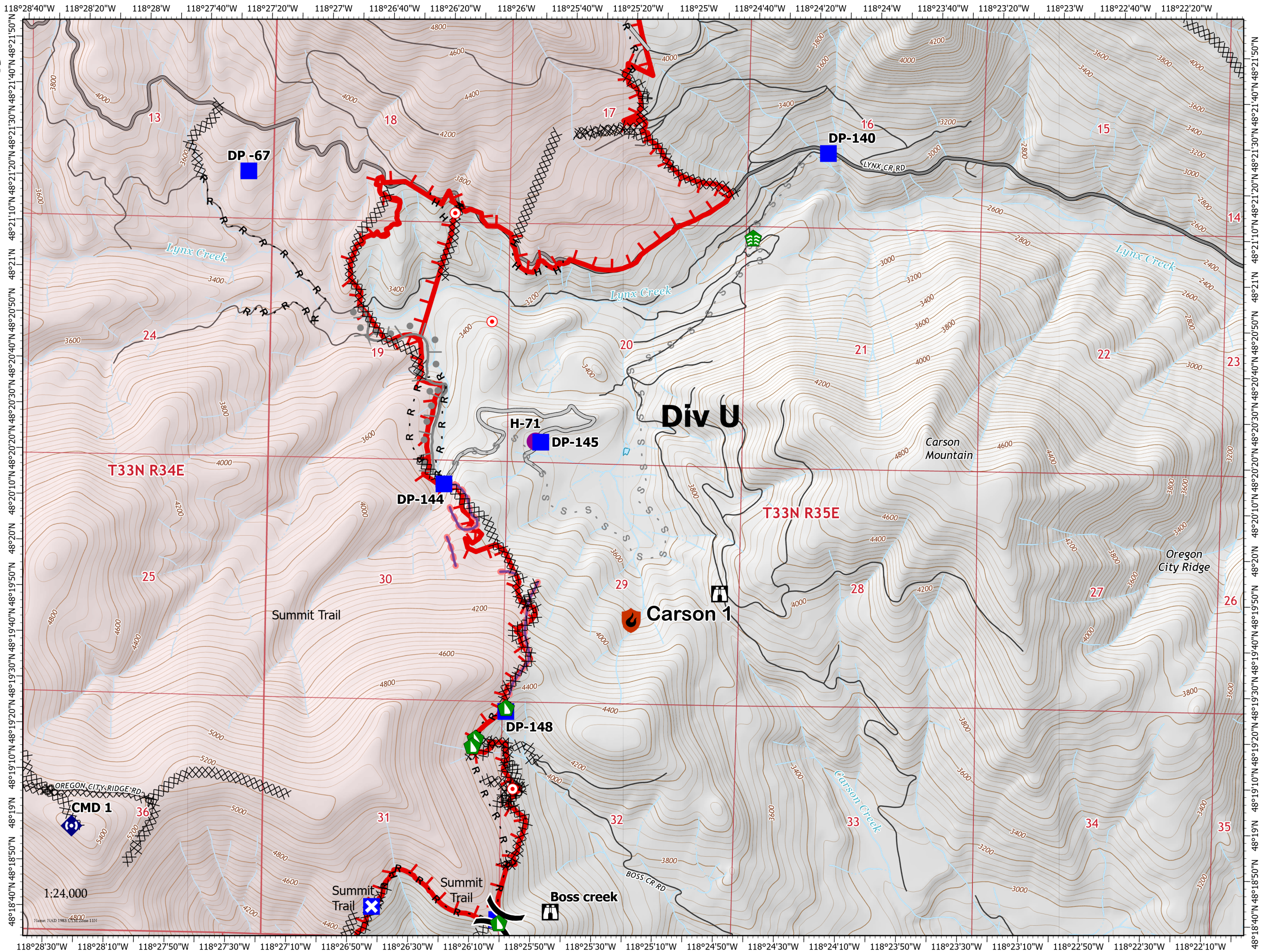
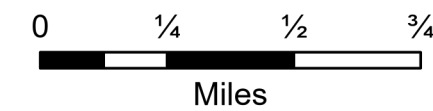


Page 14 of 16

New Starts

Containment

-  Out
-  Helispot
-  Division Break
-  Drop Point
-  Closure
-  Lookout
-  Hot Spot - Spot Fire
-  Stream Crossing
-  Dozer Push
-  Repeater
-  Completed Dozer Line
-  Completed Hand Line
-  Completed Road as Line
-  Planned Burnout
-  Planned Secondary Line
-  Access or Improved Road



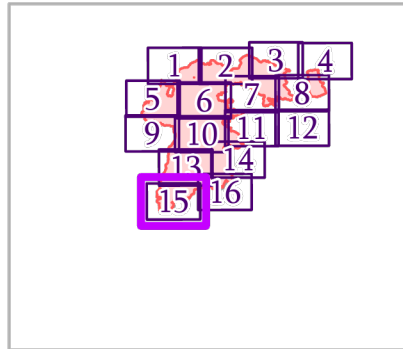
IAP MAP

Summit Trail Fire

WA-COA-200087

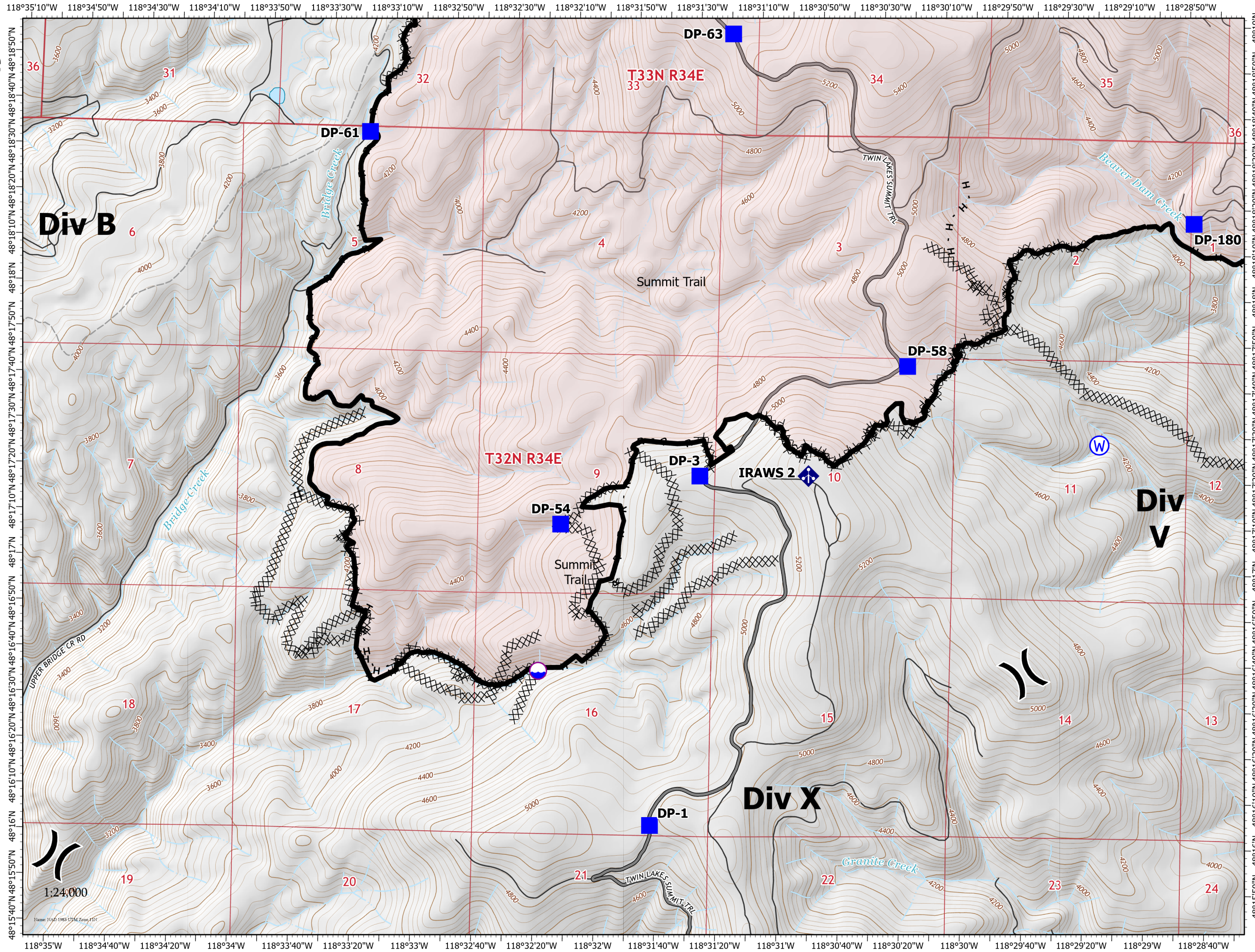
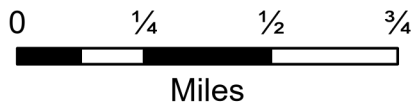
42,754 Acres
on 08/17/2021 at 1000

August 18, 2021



Page 15 of 16

- Dip Site
- Division Break
- Drop Point
- Mobile Weather Unit
- Water Source
- Completed Dozer Line
- Completed Hand Line
- Completed Road as Line
- Contained Line
- Other
- Fire Perimeter
- State or Territory
- Main Route - Unimproved
- Local Road
- 4WD
- County or Equivalent



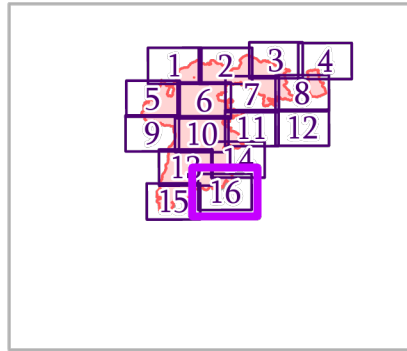
IAP MAP

Summit Trail Fire

WA-COA-200087

42,754 Acres
on 08/17/2021 at 1000

August 18, 2021



Page 16 of 16

- Division Break
 - Drop Point
 - Closure
 - Lookout
 - Hot Spot - Spot Fire
 - Water Development or Draft Site
 - Dozer Push
 - Repeater
 - Water Source
 - Completed Dozer Line
 - Completed Hand Line
 - Completed Road as Line
 - Retardant Drop
 - Fire Edge
 - Contained Line
 - Other
 - Fire Perimeter
 - State or Territory
 - Main Route - Improved
- 1:24,000
- 0 1/4 1/2 3/4 Miles

