

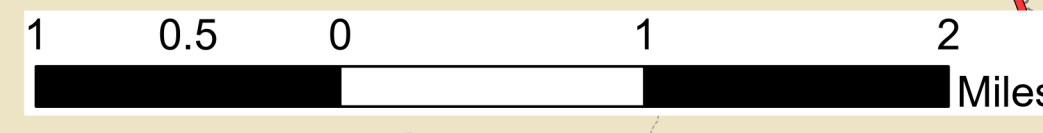
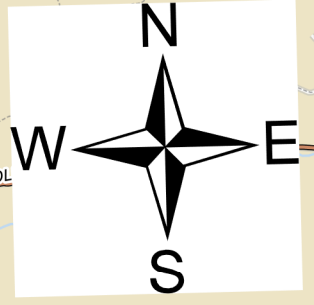
Transportation Map

Summit Trail Fire

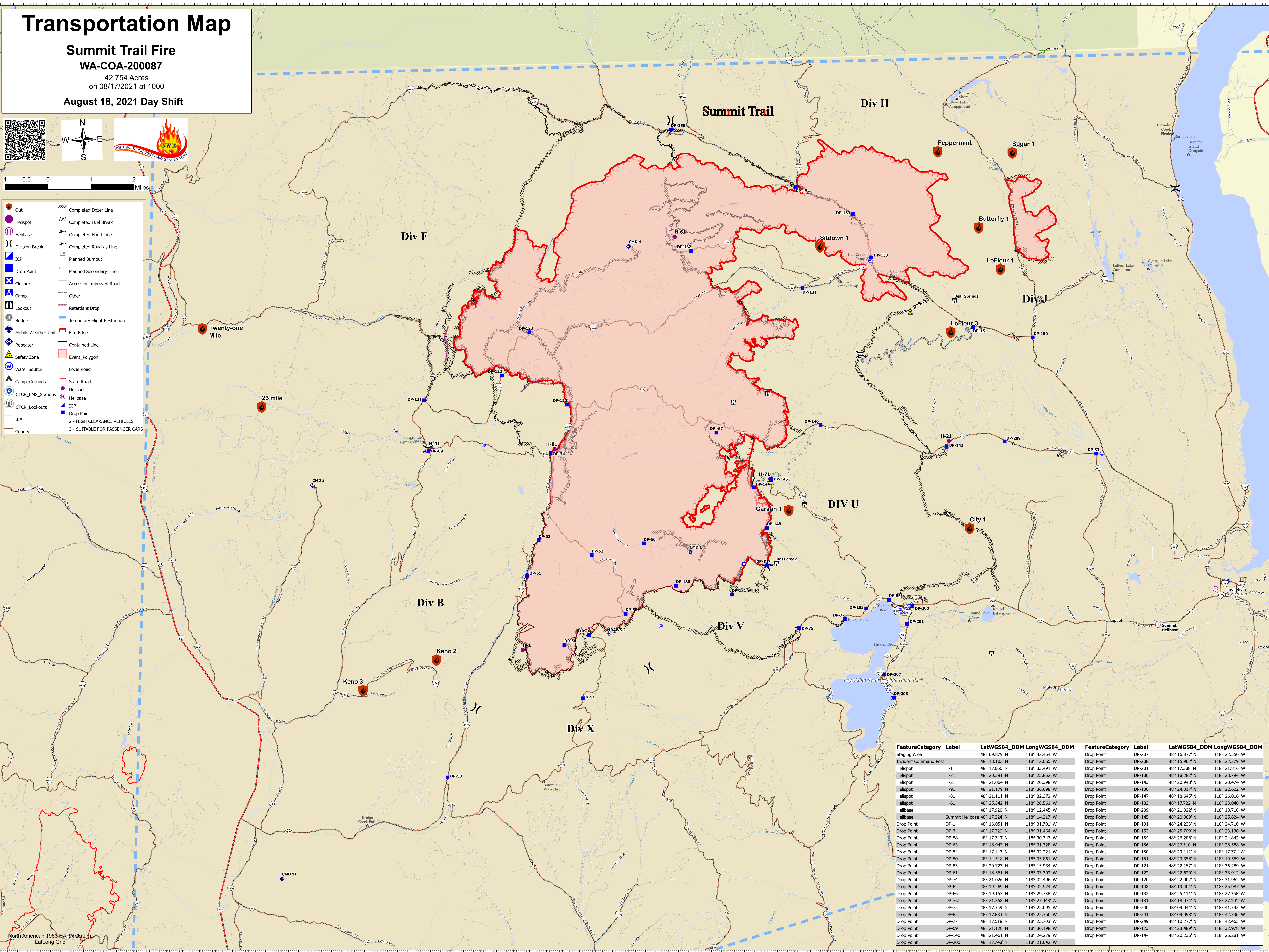
WA-COA-200087

42,754 Acres
on 08/17/2021 at 1000

August 18, 2021 Day Shift



	Out		Completed Dozer Line
	Helispot		Completed Fuel Break
	Helibase		Completed Hand Line
	Division Break		Completed Road as Line
	ICP		Planned Burnout
	Drop Point		Planned Secondary Line
	Closure		Access or Improved Road
	Camp		Other
	Lookout		Retardant Drop
	Bridge		Temporary Flight Restriction
	Mobile Weather Unit		Fire Edge
	Repeater		Contained Line
	Safety Zone		Event Polygon
	Water Source		Local Road
	Camp_Grounds		State Road
	CTCR_EMS_Stations		Helispot
	CTCR_Lookouts		Helibase
	BIA		Drop Point
	County		2 - HIGH CLEARANCE VEHICLES
			3 - SUITABLE FOR PASSENGER CARS



FeatureCategory	Label	LatWGS84_DDM	LongWGS84_DDM	FeatureCategory	Label	LatWGS84_DDM	LongWGS84_DDM
Staging Area		48° 09.879' N	118° 42.454' W	Drop Point	DP-207	48° 16.377' N	118° 22.550' W
Incident Command Post		48° 18.103' N	118° 12.065' W	Drop Point	DP-208	48° 15.902' N	118° 22.279' W
Helispot	H-1	48° 17.060' N	118° 33.491' W	Drop Point	DP-201	48° 17.388' N	118° 21.816' W
Helispot	H-71	48° 20.391' N	118° 25.852' W	Drop Point	DP-180	48° 18.282' N	118° 26.794' W
Helispot	H-21	48° 21.064' N	118° 20.388' W	Drop Point	DP-143	48° 20.948' N	118° 20.474' W
Helispot	H-91	48° 21.379' N	118° 36.698' W	Drop Point	DP-130	48° 24.817' N	118° 22.602' W
Helispot	H-61	48° 21.111' N	118° 32.372' W	Drop Point	DP-147	48° 18.645' N	118° 26.016' W
Helispot	H-81	48° 25.342' N	118° 28.561' W	Drop Point	DP-183	48° 17.722' N	118° 23.040' W
Helibase		48° 19.920' N	118° 12.445' W	Drop Point	DP-209	48° 21.022' N	118° 18.710' W
Helibase	Summit Helibase	48° 17.224' N	118° 14.217' W	Drop Point	DP-145	48° 20.389' N	118° 25.824' W
Drop Point	DP-1	48° 16.051' N	118° 31.701' W	Drop Point	DP-131	48° 24.233' N	118° 24.716' W
Drop Point	DP-3	48° 17.329' N	118° 31.464' W	Drop Point	DP-153	48° 25.709' N	118° 23.130' W
Drop Point	DP-58	48° 17.743' N	118° 30.343' W	Drop Point	DP-154	48° 26.288' N	118° 24.842' W
Drop Point	DP-63	48° 18.943' N	118° 31.328' W	Drop Point	DP-156	48° 26.288' N	118° 28.588' W
Drop Point	DP-54	48° 17.143' N	118° 32.221' W	Drop Point	DP-150	48° 23.111' N	118° 17.771' W
Drop Point	DP-50	48° 14.518' N	118° 35.861' W	Drop Point	DP-151	48° 23.358' N	118° 19.569' W
Drop Point	DP-83	48° 20.723' N	118° 15.934' W	Drop Point	DP-121	48° 22.157' N	118° 36.289' W
Drop Point	DP-61	48° 18.561' N	118° 33.302' W	Drop Point	DP-122	48° 22.620' N	118° 33.912' W
Drop Point	DP-74	48° 21.026' N	118° 32.496' W	Drop Point	DP-120	48° 22.002' N	118° 31.962' W
Drop Point	DP-62	48° 19.269' N	118° 32.924' W	Drop Point	DP-148	48° 19.404' N	118° 25.987' W
Drop Point	DP-66	48° 19.153' N	118° 29.738' W	Drop Point	DP-132	48° 25.111' N	118° 27.368' W
Drop Point	DP-67	48° 21.358' N	118° 27.448' W	Drop Point	DP-181	48° 18.074' N	118° 27.101' W
Drop Point	DP-75	48° 17.359' N	118° 25.095' W	Drop Point	DP-240	48° 09.044' N	118° 41.792' W
Drop Point	DP-85	48° 17.883' N	118° 22.350' W	Drop Point	DP-241	48° 09.093' N	118° 42.736' W
Drop Point	DP-77	48° 17.518' N	118° 23.703' W	Drop Point	DP-249	48° 10.277' N	118° 42.465' W
Drop Point	DP-69	48° 21.128' N	118° 36.198' W	Drop Point	DP-123	48° 23.489' N	118° 32.978' W
Drop Point	DP-140	48° 21.461' N	118° 24.279' W	Drop Point	DP-144	48° 20.236' N	118° 26.281' W
Drop Point	DP-200	48° 17.748' N	118° 21.642' W				

North American 1983 NAD83 Datum
LatLong Grid