

IAP MAP

Summit Trail Fire

WA-COA-200087

45,466 Acres
on 08/20/2021 at 1900

August 21, 2021

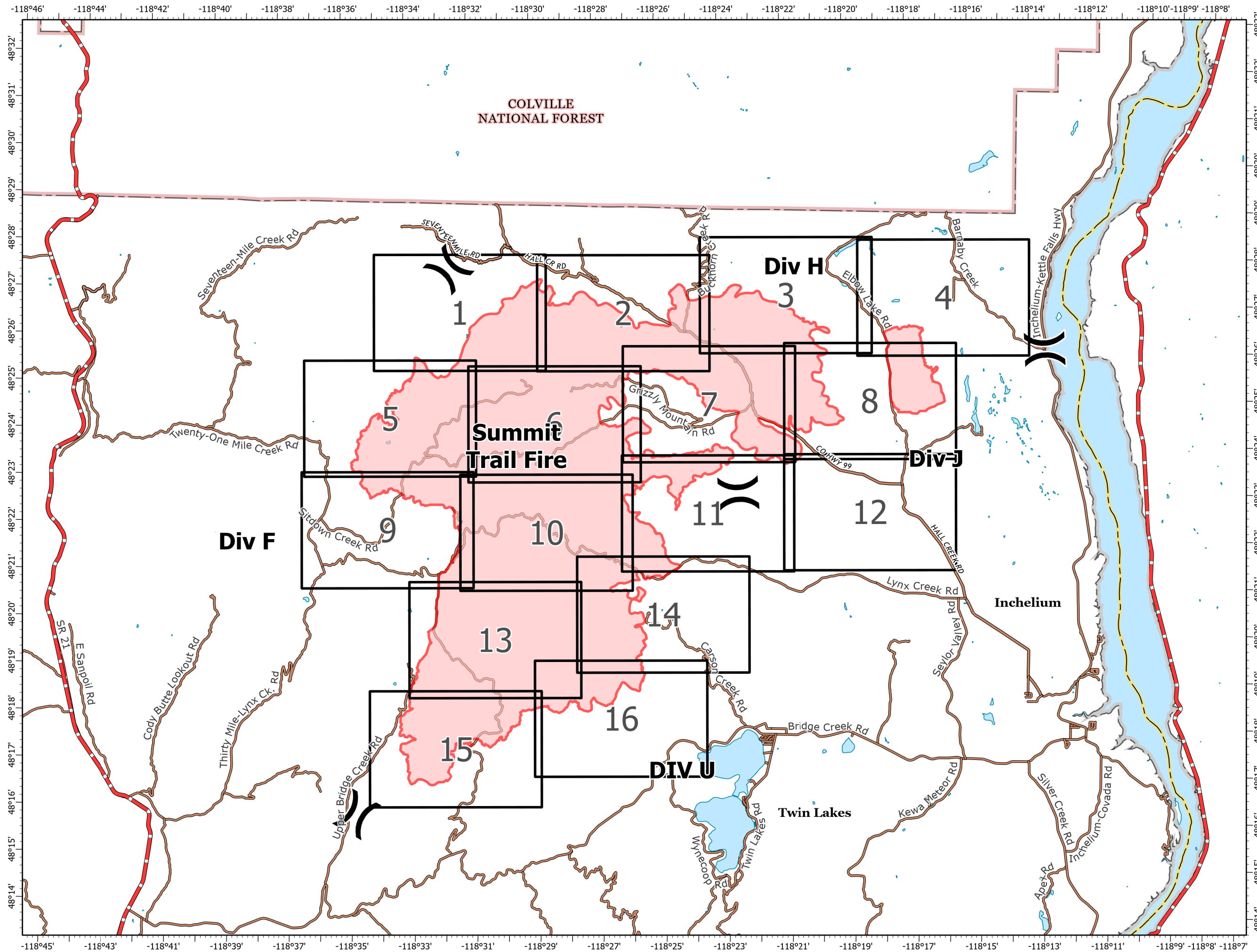


- (X) Division Break
- Fire Perimeter
- Additional Rd Selections
- Comprehensive Roads Hosted
- Owner
- BIA
- City
- County
- Other Drive-able
- Other Not Drive-able
- Private
- State
- Tribe
- Highway

Daily Weather
Temperature: 65°
Relative Humidity: 70%
Wind Direction: NE
Wind Speed: 7 mph
Chance of Rain: 70%



1:140,000
NAD 1983
UTM 11N



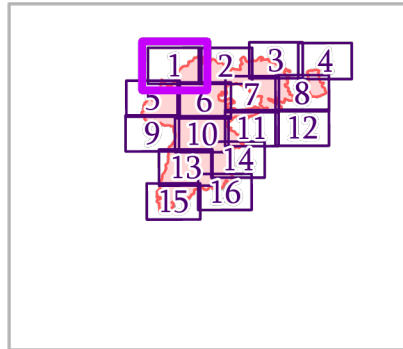
IAP MAP

Summit Trail Fire

WA-COA-200087

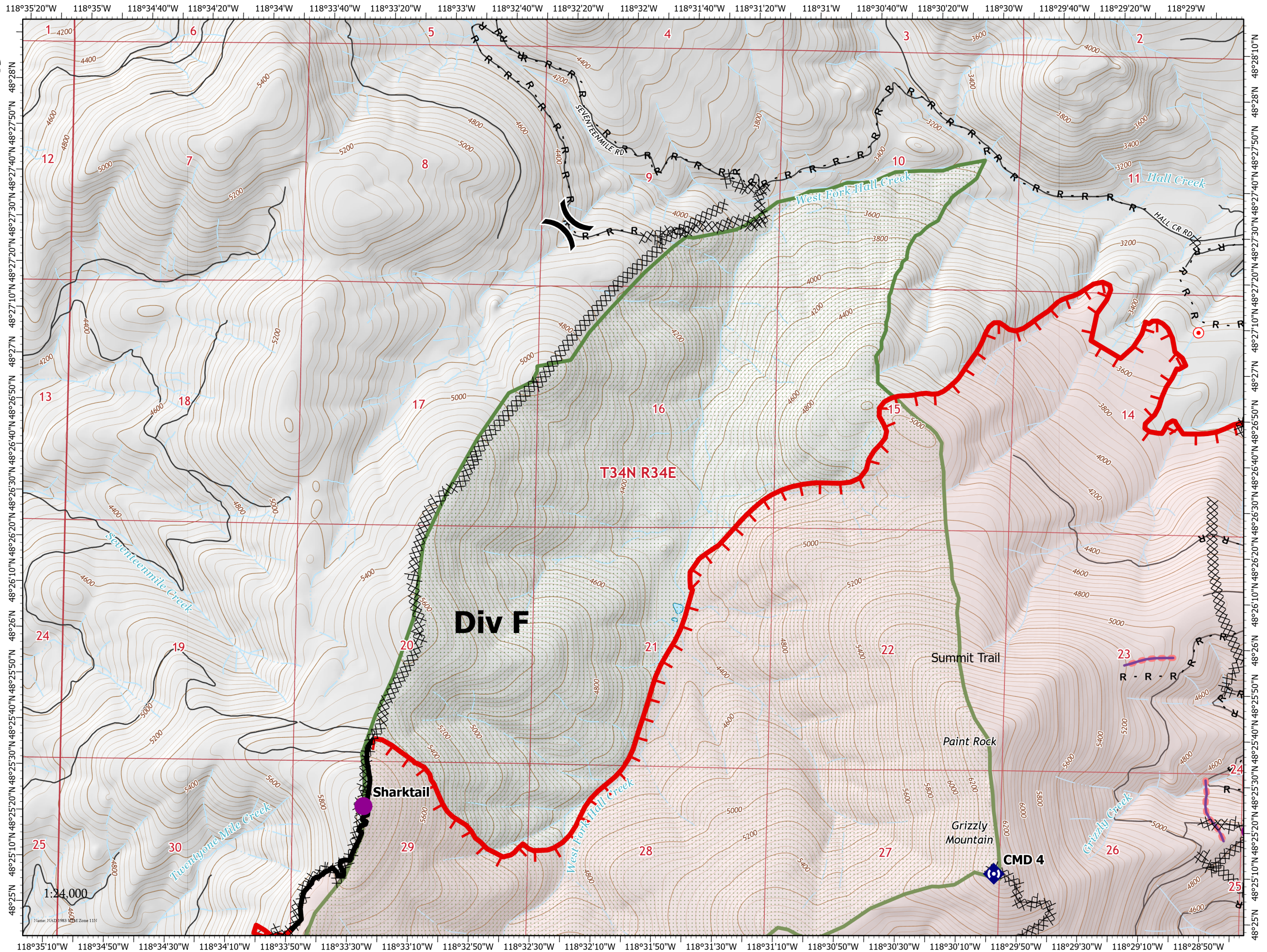
45,466 Acres
on 08/20/2021 at 1900

August 21, 2021



Page 1 of 16

- Helispot
-) Division Break
- Drop Point
- Hot Spot - Spot Fire
- ⬢ Repeater
- ⊗ Completed Dozer Line
- R Completed Road as Line
- Retardant Drop
- ┌ Fire Edge
- Contained Line
- Fire Perimeter
- State or Territory
- Local Road
- County or Equivalent
- Wilderness Area



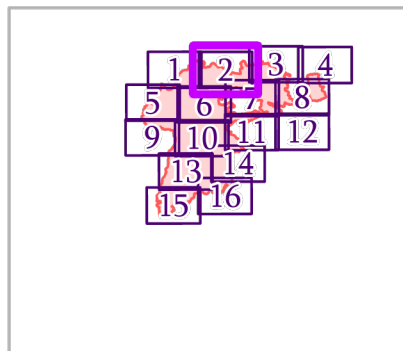
IAP MAP

Summit Trail Fire

WA-COA-200087

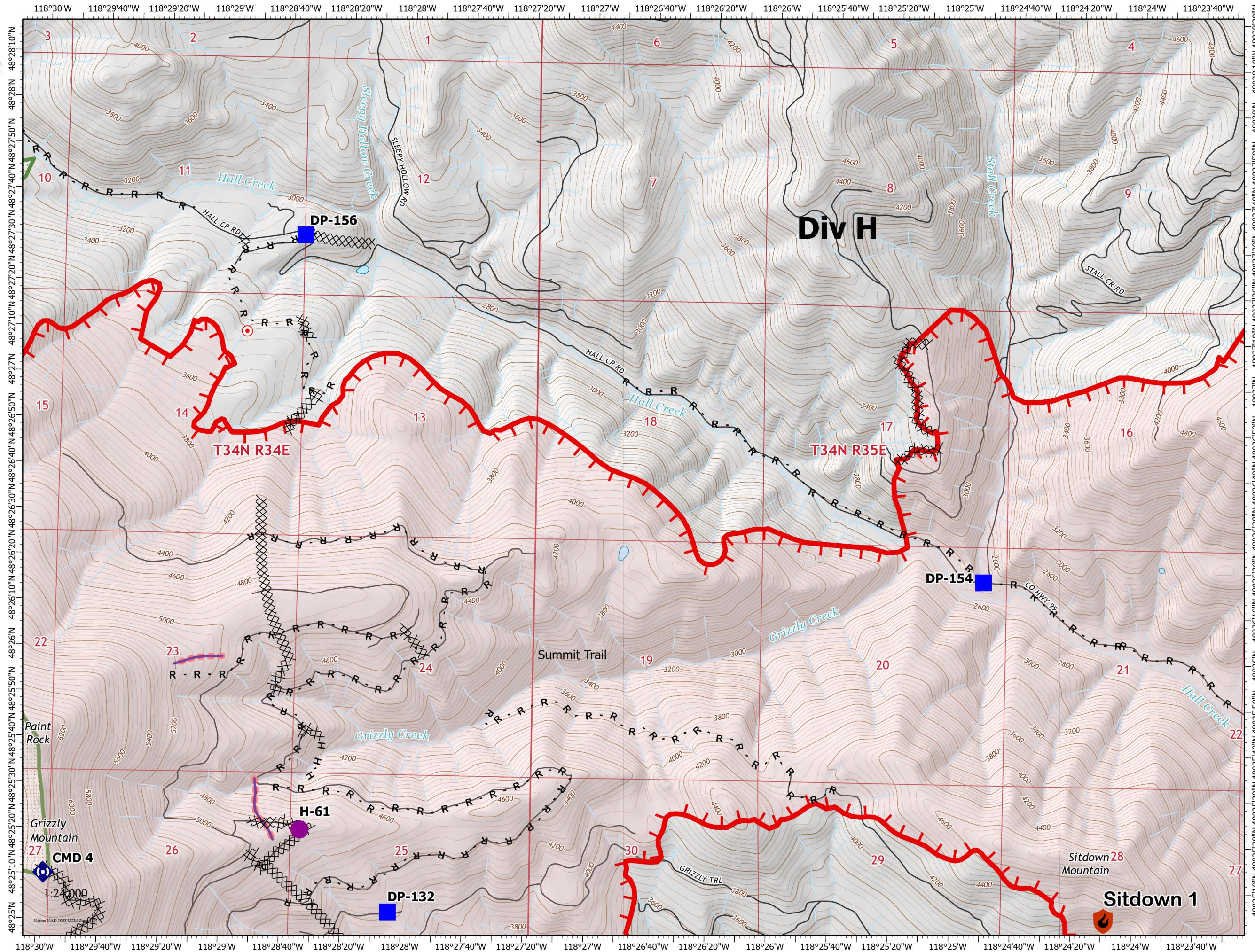
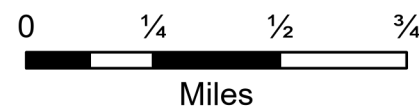
45,466 Acres
on 08/20/2021 at 1900

August 21, 2021



Page 2 of 16

- Helispot
- Drop Point
- Hot Spot - Spot Fire
- ◆ Repeater
- ⊗ Completed Dozer Line
- H Completed Hand Line
- R Completed Road as Line
- Retardant Drop
- ┌ Fire Edge
- Fire Perimeter
- State or Territory
- Local Road
- - - 4WD
- County or Equivalent
- Wilderness Area



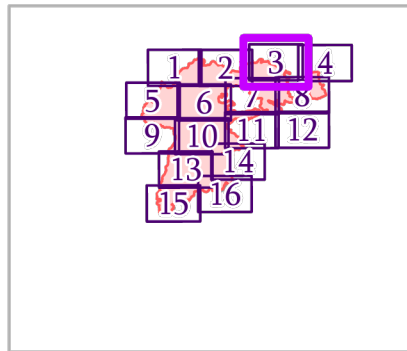
IAP MAP

Summit Trail Fire

WA-COA-200087

45,466 Acres
on 08/20/2021 at 1900


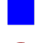


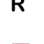








August 21, 2021

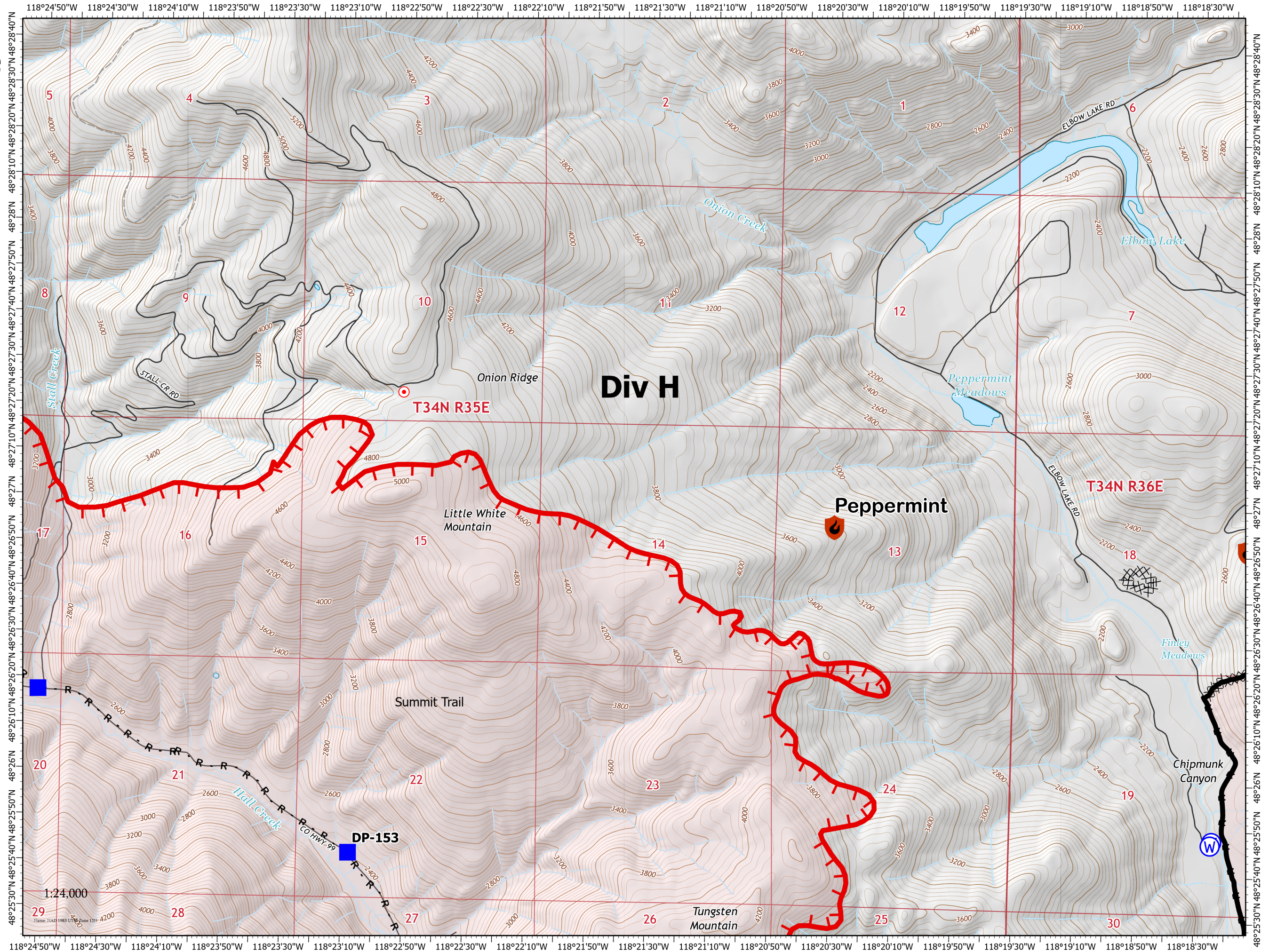


Page 3 of 16

New Starts

Containment

-  Out
-  Drop Point
-  Hot Spot - Spot Fire
-  Water Source
-  Completed Dozer Line
-  Completed Road as Line
-  Fire Edge
-  Contained Line
-  Fire Perimeter
-  State or Territory
-  Local Road
-  4WD
-  County or Equivalent



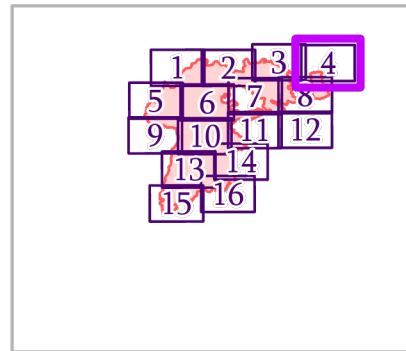
IAP MAP

Summit Trail Fire

WA-COA-200087

45,466 Acres
on 08/20/2021 at 1900








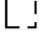



August 21, 2021

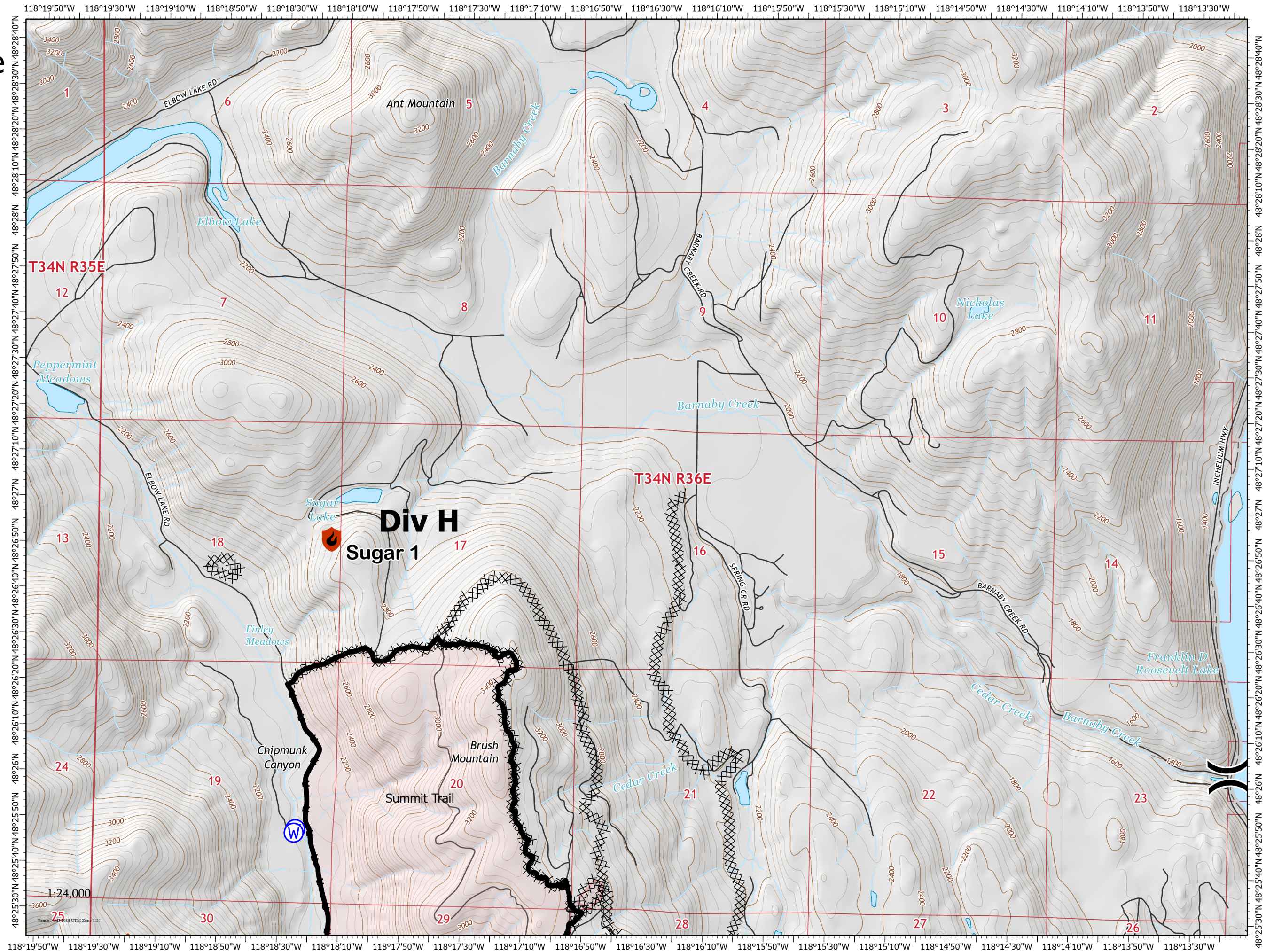


Page 4 of 16

New Starts

Containment

-  Out
-  Division Break
-  Drop Point
-  Water Source
-  Completed Dozer Line
-  Completed Road as Line
-  Contained Line
-  Fire Perimeter
-  State or Territory
-  Local Road
-  County or Equivalent



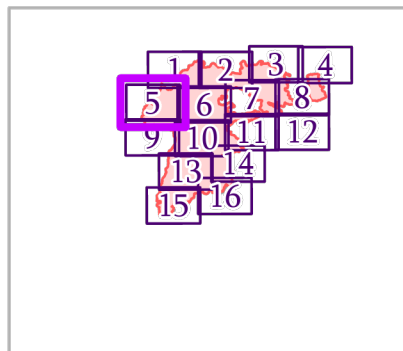
IAP MAP

Summit Trail Fire

WA-COA-200087

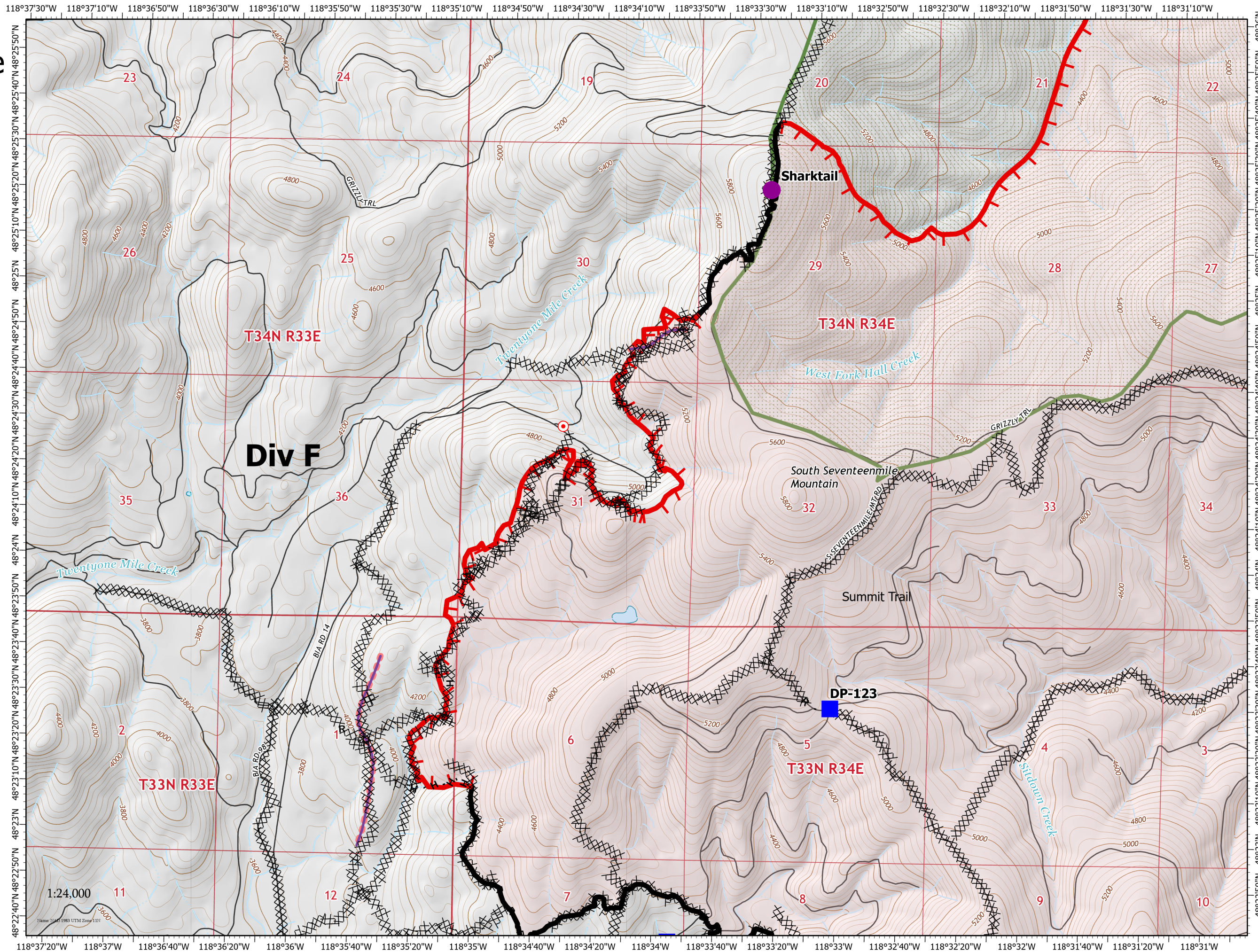
45,466 Acres
on 08/20/2021 at 1900

August 21, 2021



Page 5 of 16

- Helispot
- Drop Point
- Hot Spot - Spot Fire
- ⊗ Completed Dozer Line
- H Completed Hand Line
- R Completed Road as Line
- Retardant Drop
- └ Fire Edge
- Contained Line
- Fire Perimeter
- State or Territory
- Local Road
- County or Equivalent
- Wilderness Area



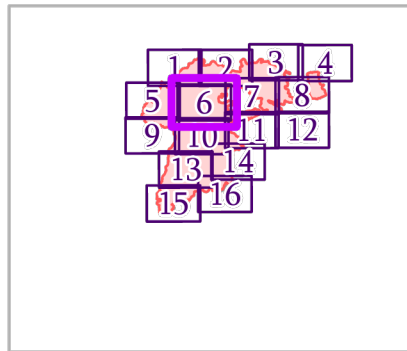
IAP MAP

Summit Trail Fire

WA-COA-200087

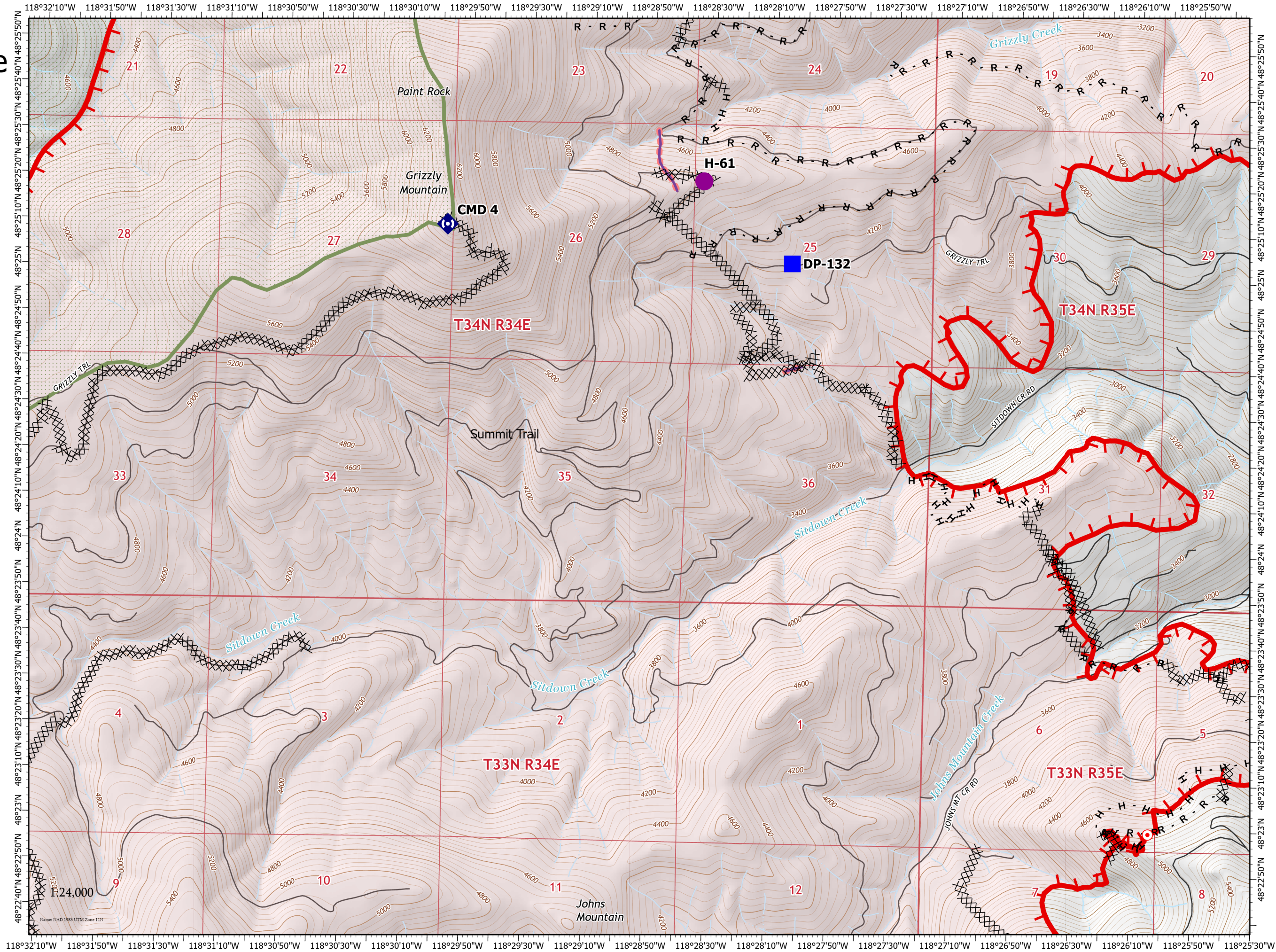
45,466 Acres
on 08/20/2021 at 1900

August 21, 2021



Page 6 of 16

- Helispot
- Drop Point
- Hot Spot - Spot Fire
- ◆ Repeater
- ⊗ Completed Dozer Line
- H Completed Hand Line
- R Completed Road as Line
- Retardant Drop
- ┌ Fire Edge
- Fire Perimeter
- ▭ State or Territory
- Local Road
- ▭ County or Equivalent
- ▭ Wilderness Area



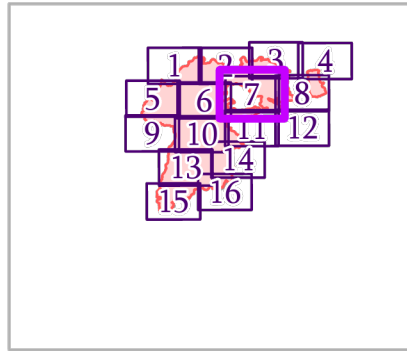
IAP MAP

Summit Trail Fire

WA-COA-200087

45,466 Acres
on 08/20/2021 at 1900








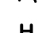





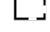

August 21, 2021

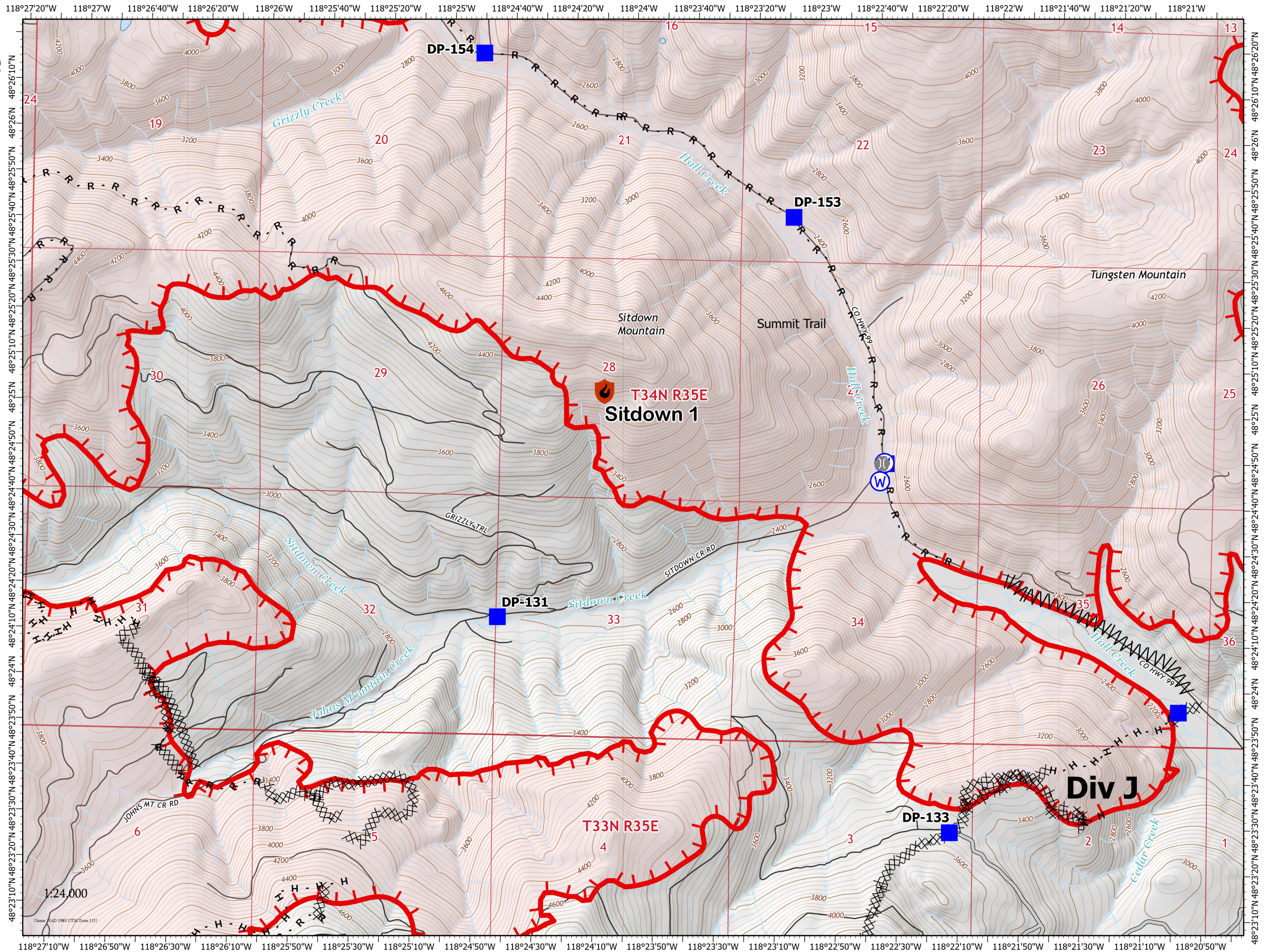


Page 7 of 16

New Starts

Containment

-  Out
-  Drop Point
-  Hot Spot - Spot Fire
-  Bridge
-  Water Source
-  Completed Dozer Line
-  Completed Fuel Break
-  Completed Hand Line
-  Completed Road as Line
-  Access or Improved Road
-  Fire Edge
-  Fire Perimeter
-  State or Territory
-  Local Road
-  County or Equivalent



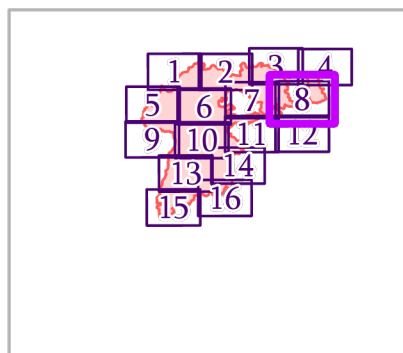
IAP MAP

Summit Trail Fire

WA-COA-200087

45,466 Acres
on 08/20/2021 at 1900






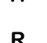


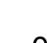


August 21, 2021

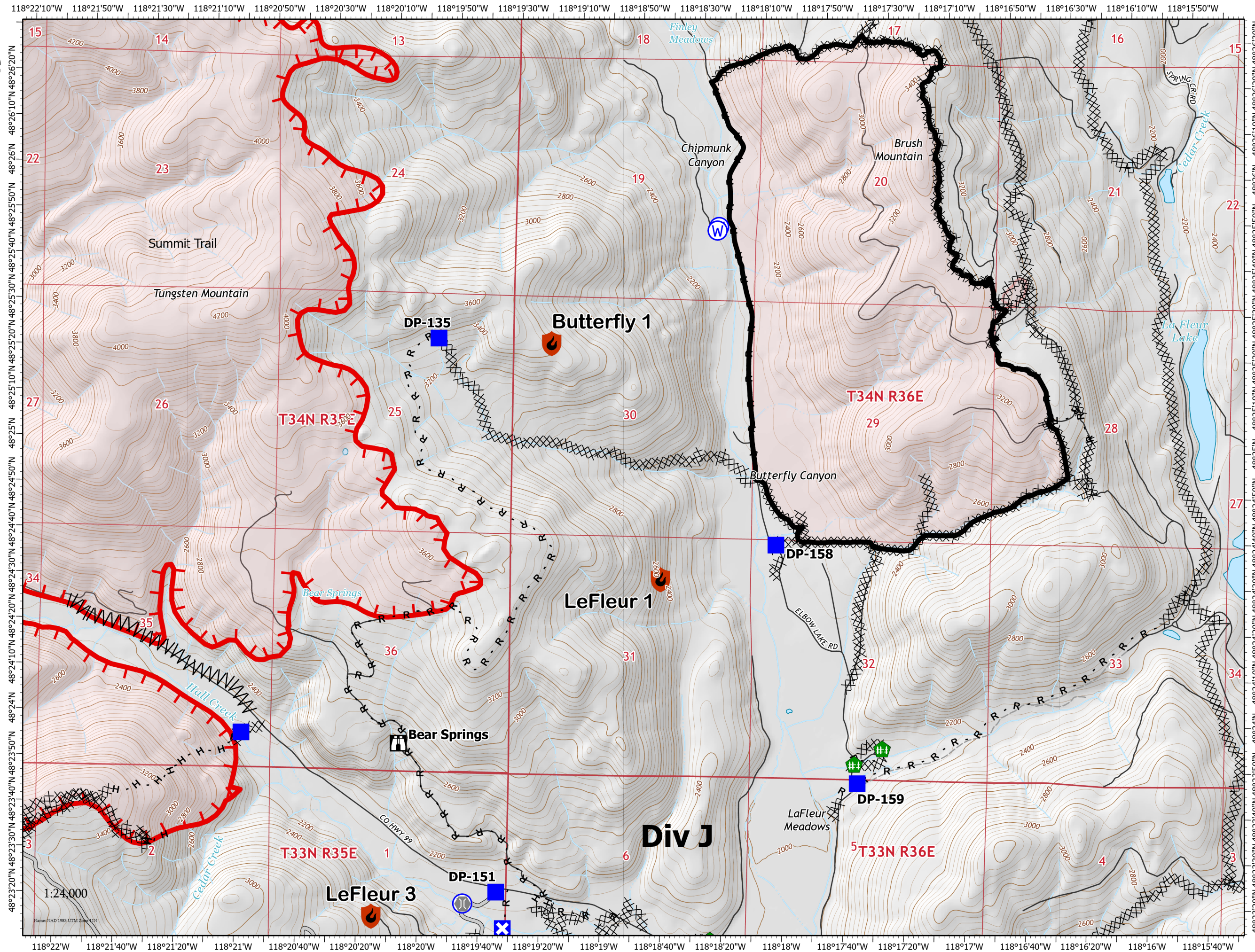
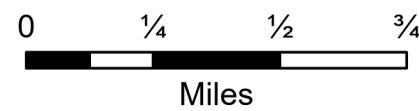


Page 8 of 16

New Starts

Containment

-  Out
-  Drop Point
-  Closure
-  Lookout
-  Bridge
-  Fence - Cut/Damaged
-  Water Source
-  Completed Dozer Line
-  Completed Fuel Break
-  Completed Hand Line
-  Completed Road as Line
-  Access or Improved Road
-  Fire Edge
-  Contained Line
-  Fire Perimeter
-  State or Territory



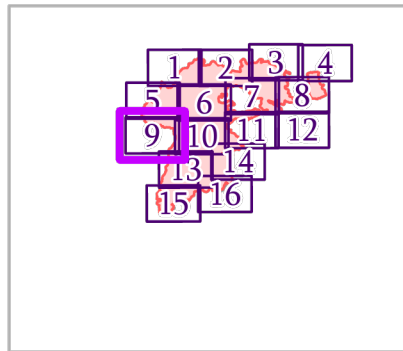
IAP MAP

Summit Trail Fire

WA-COA-200087

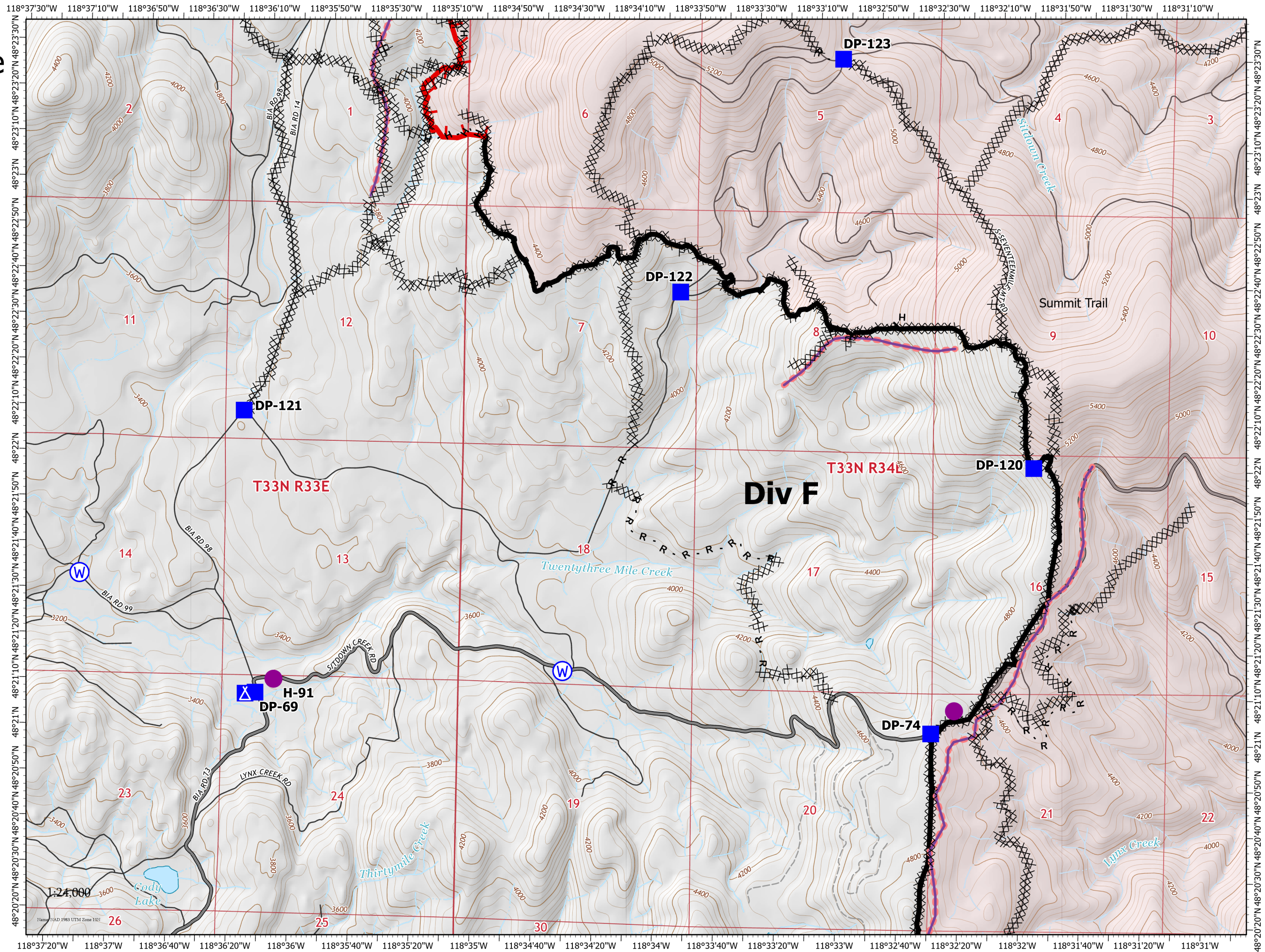
45,466 Acres
on 08/20/2021 at 1900

August 21, 2021



Page 9 of 16

- Helispot
- Drop Point
- ▲ Camp
- ⊙ Water Source
- ⊗ Completed Dozer Line
- H Completed Hand Line
- R Completed Road as Line
- Retardant Drop
- ┌ Fire Edge
- Contained Line
- Fire Perimeter
- State or Territory
- Main Route - Unimproved
- Local Road
- 4WD
- County or Equivalent



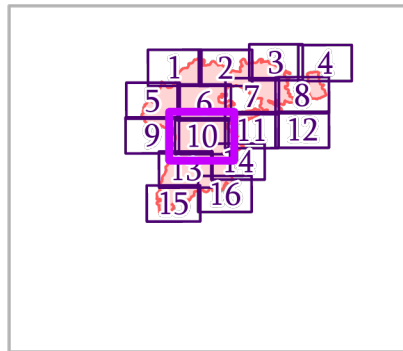
IAP MAP

Summit Trail Fire

WA-COA-200087

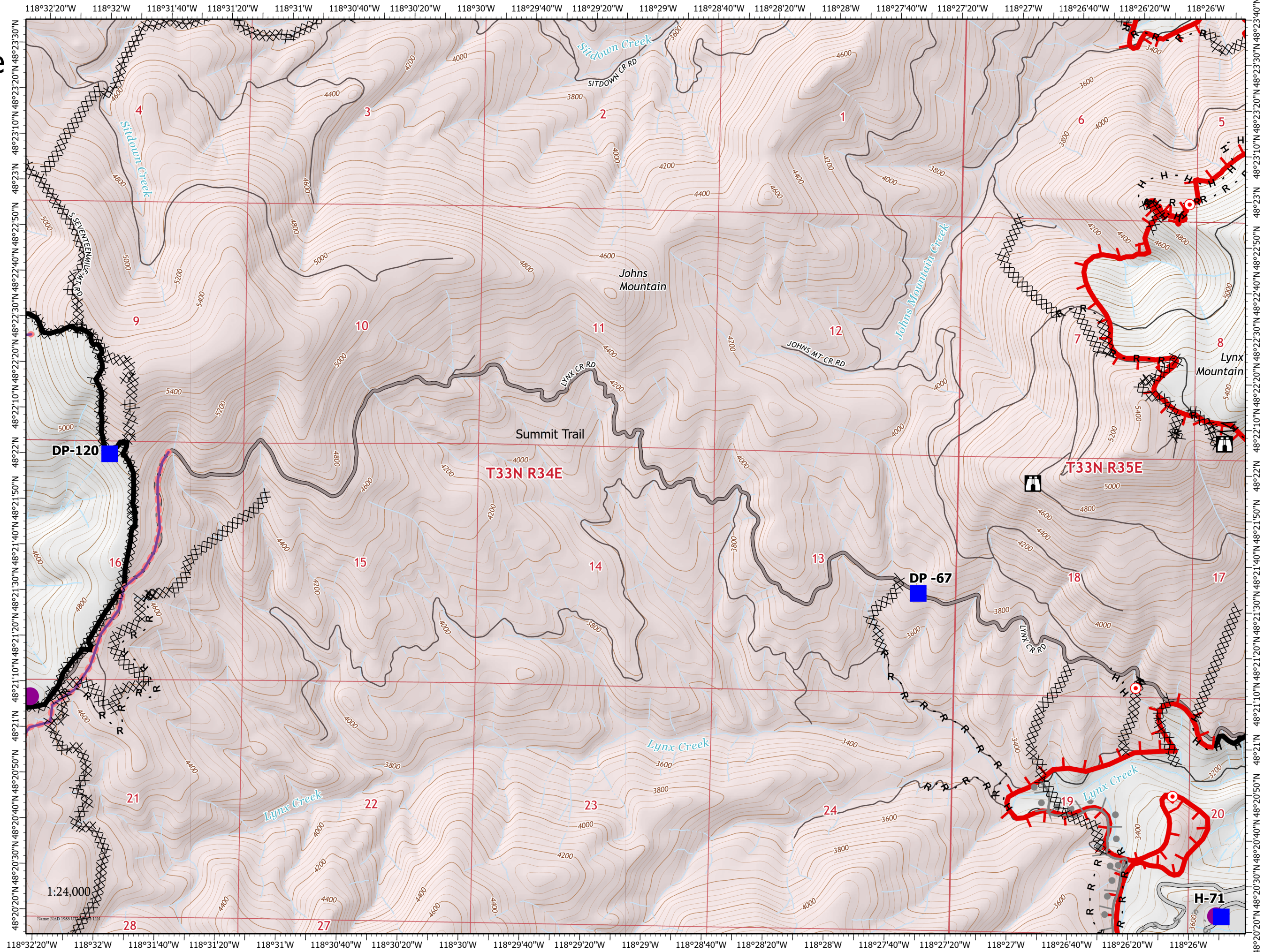
45,466 Acres
on 08/20/2021 at 1900

August 21, 2021



Page 10 of 16

- Helispot
- Drop Point
- Lookout
- Hot Spot - Spot Fire
- Structure Wrap
- Completed Dozer Line
- Completed Fuel Break
- Completed Hand Line
- Completed Road as Line
- Planned Burnout
- Planned Secondary Line
- Access or Improved Road
- Retardant Drop
- Fire Edge
- Contained Line
- Fire Perimeter
- State or Territory
- Main Route - Unimproved
- Local Road



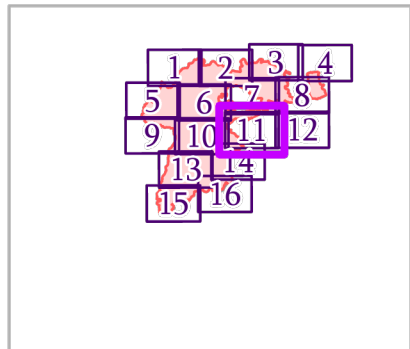
IAP MAP

Summit Trail Fire

WA-COA-200087

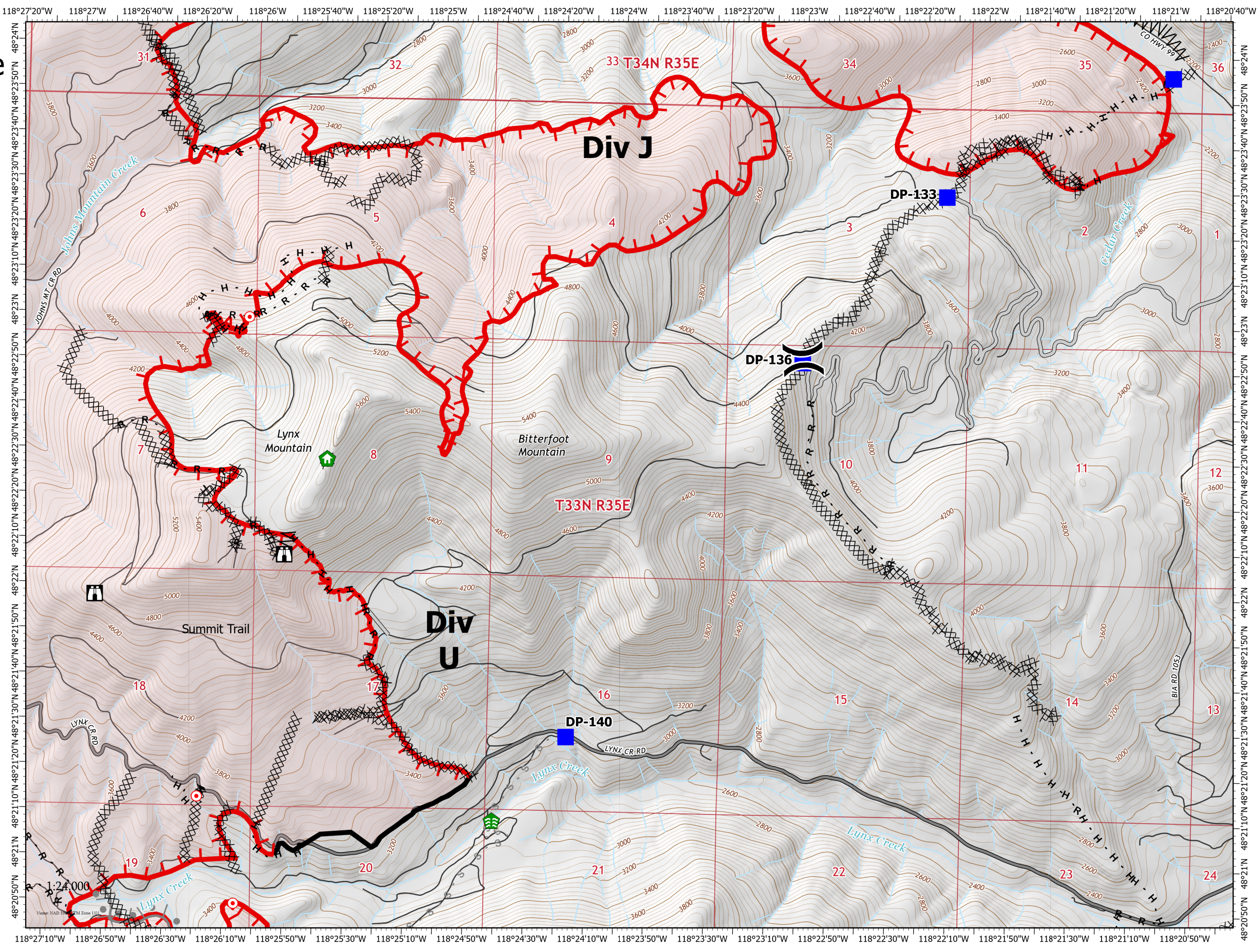
45,466 Acres
on 08/20/2021 at 1900

August 21, 2021



Page 11 of 16

- Division Break
- Drop Point
- Lookout
- Hot Spot - Spot Fire
- Structure Wrap
- Stream Crossing
- Completed Dozer Line
- Completed Fuel Break
- Completed Hand Line
- Completed Road as Line
- Planned Burnout
- Planned Secondary Line
- Access or Improved Road
- Fire Edge
- Contained Line
- Fire Perimeter
- State or Territory
- Main Route - Unimproved
- Local Road



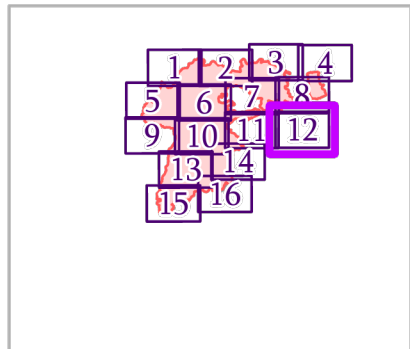
IAP MAP

Summit Trail Fire

WA-COA-200087

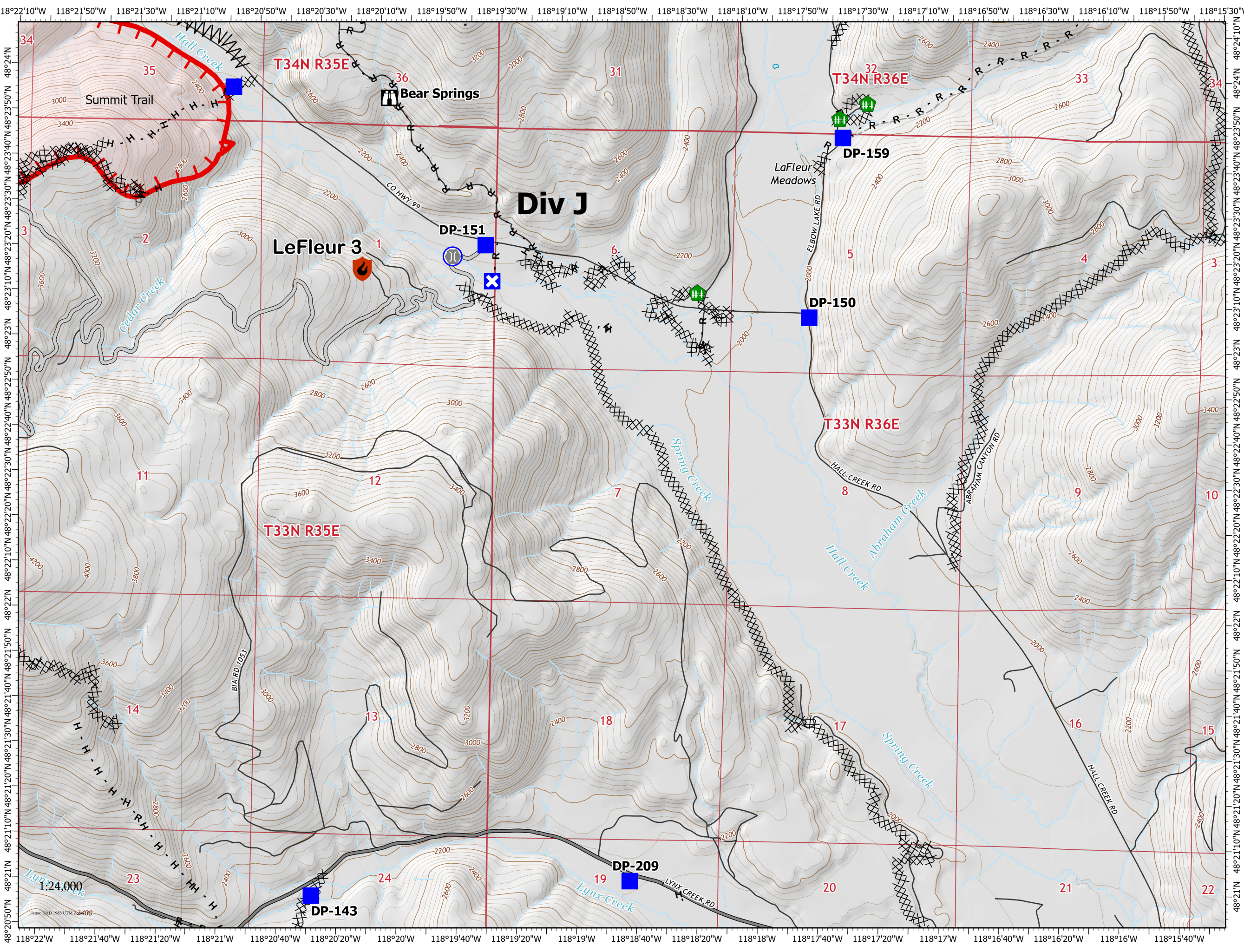
45,466 Acres
on 08/20/2021 at 1900

August 21, 2021



Page 12 of 16

- New Starts
- Containment
- Out
- Drop Point
- Closure
- Lookout
- Bridge
- Fence - Cut/Damaged
- Water Source
- Completed Dozer Line
- Completed Fuel Break
- Completed Hand Line
- Completed Road as Line
- Access or Improved Road
- Fire Edge
- Fire Perimeter
- State or Territory
- Main Route - Unimproved



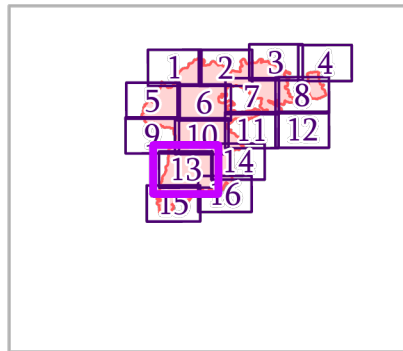
IAP MAP

Summit Trail Fire

WA-COA-200087

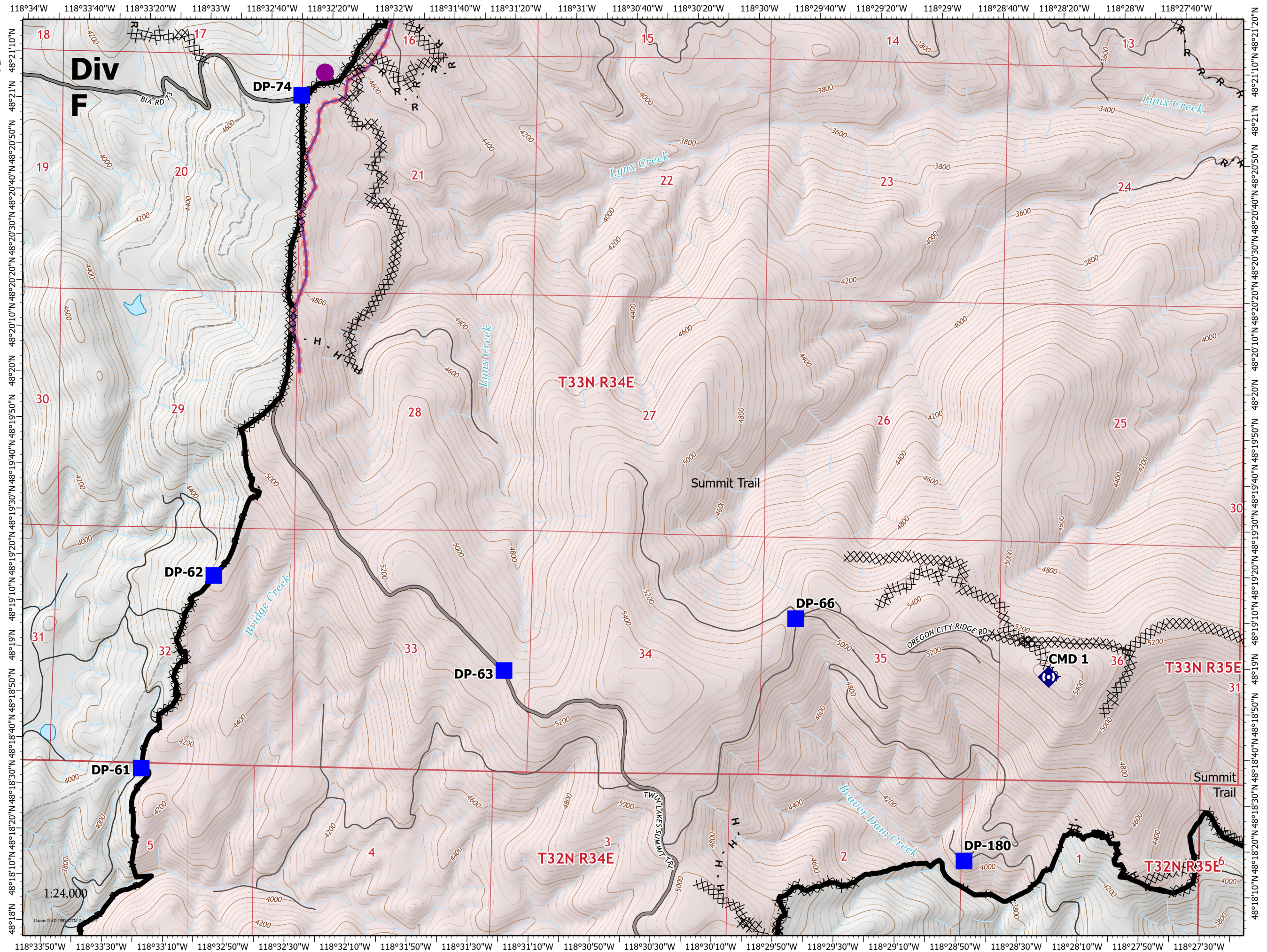
45,466 Acres
on 08/20/2021 at 1900

August 21, 2021



Page 13 of 16

- Helispot
- Drop Point
- ⬢ Repeater
- ⊗ Completed Dozer Line
- H Completed Hand Line
- R Completed Road as Line
- Retardant Drop
- Contained Line
- Other
- Fire Perimeter
- State or Territory
- Main Route - Unimproved
- Local Road
- - 4WD
- County or Equivalent



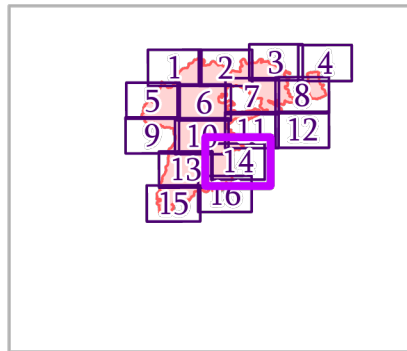
IAP MAP

Summit Trail Fire

WA-COA-200087

45,466 Acres
on 08/20/2021 at 1900


August 21, 2021

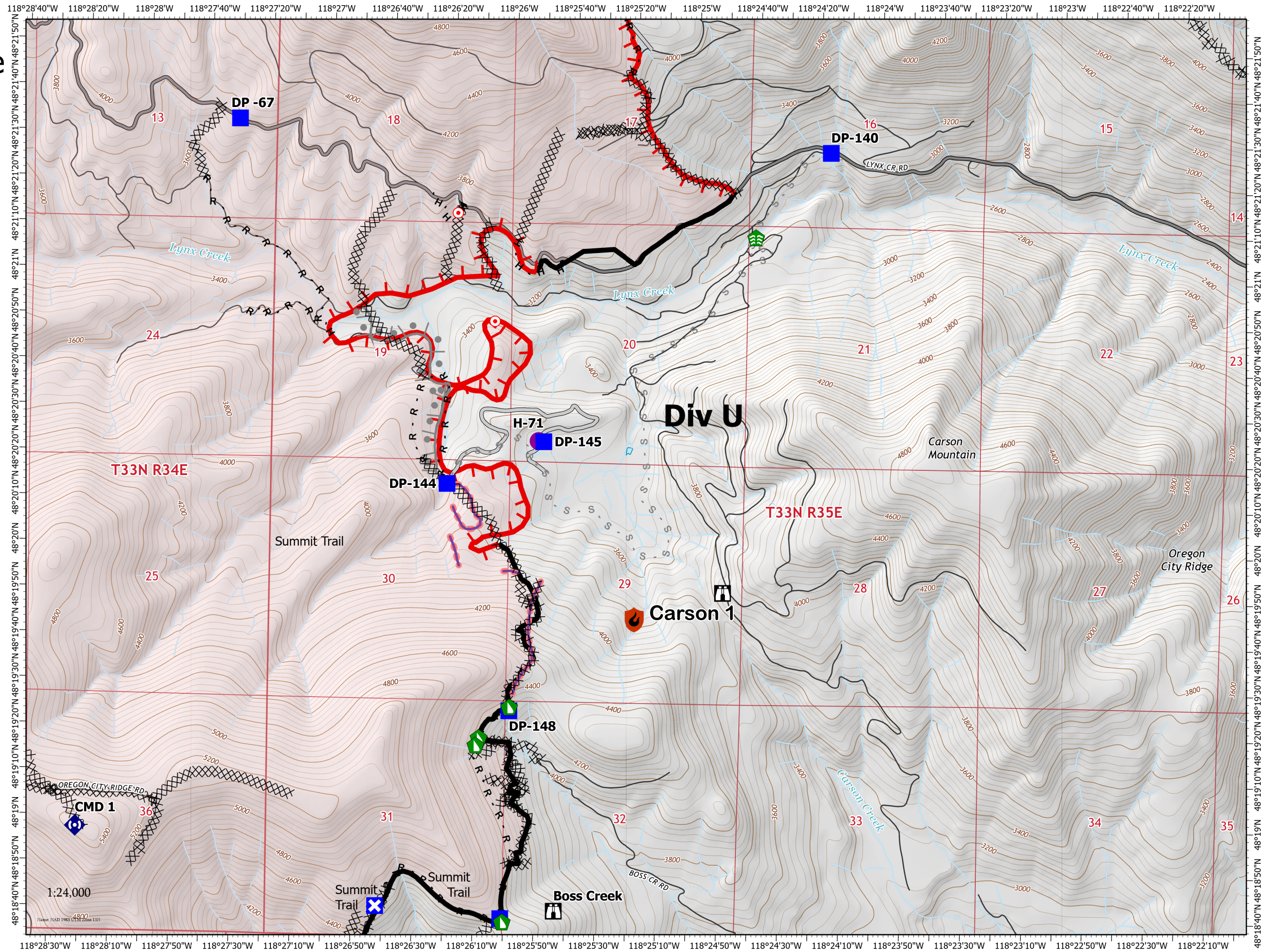


Page 14 of 16

New Starts

Containment

-  Out
-  Helispot
-  Drop Point
-  Closure
-  Lookout
-  Hot Spot - Spot Fire
-  Stream Crossing
-  Dozer Push
-  Repeater
-  Completed Dozer Line
-  Completed Hand Line
-  Completed Road as Line
-  Planned Burnout
-  Planned Secondary Line
-  Access or Improved Road
-  Retardant Drop



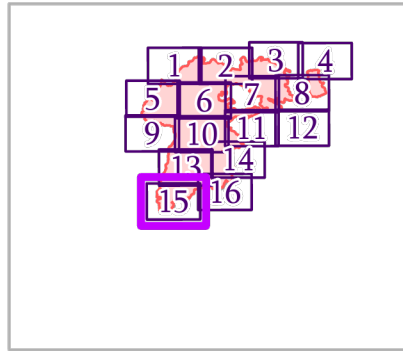
IAP MAP

Summit Trail Fire

WA-COA-200087

45,466 Acres
on 08/20/2021 at 1900

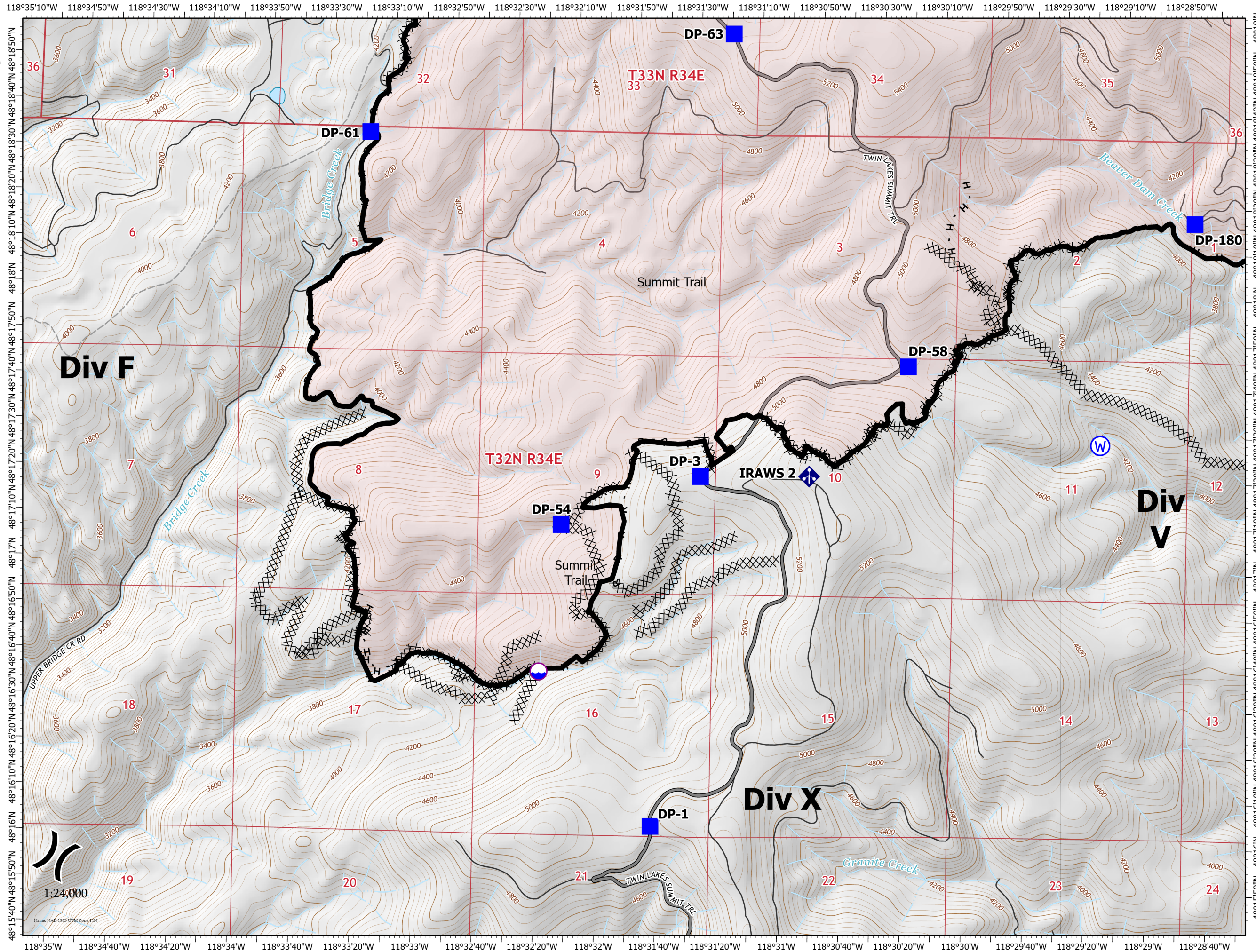
August 21, 2021



Page 15 of 16

- Dip Site
- Division Break
- Drop Point
- Mobile Weather Unit
- Water Source
- Completed Dozer Line
- Completed Hand Line
- Completed Road as Line
- Contained Line
- Other
- Fire Perimeter
- State or Territory
- Main Route - Unimproved
- Local Road
- 4WD
- County or Equivalent

1:24,000



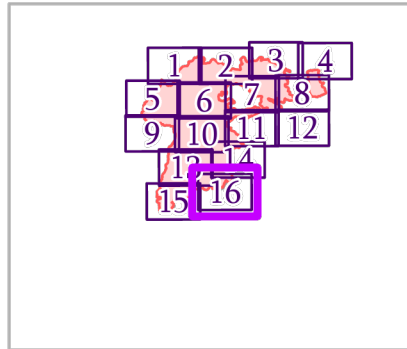
IAP MAP

Summit Trail Fire

WA-COA-200087

45,466 Acres
on 08/20/2021 at 1900

August 21, 2021



Page 16 of 16

- Drop Point
- ✕ Closure
- Lookout
- Hot Spot - Spot Fire
- Water Development or Draft Site
- Dozer Push
- Repeater
- Ⓜ Water Source
- Completed Dozer Line
- Completed Hand Line
- Completed Road as Line
- Retardant Drop
- Contained Line
- Other
- Fire Perimeter
- State or Territory
- Main Route - Improved
- Local Road
- County or Equivalent

