

Transportation Map

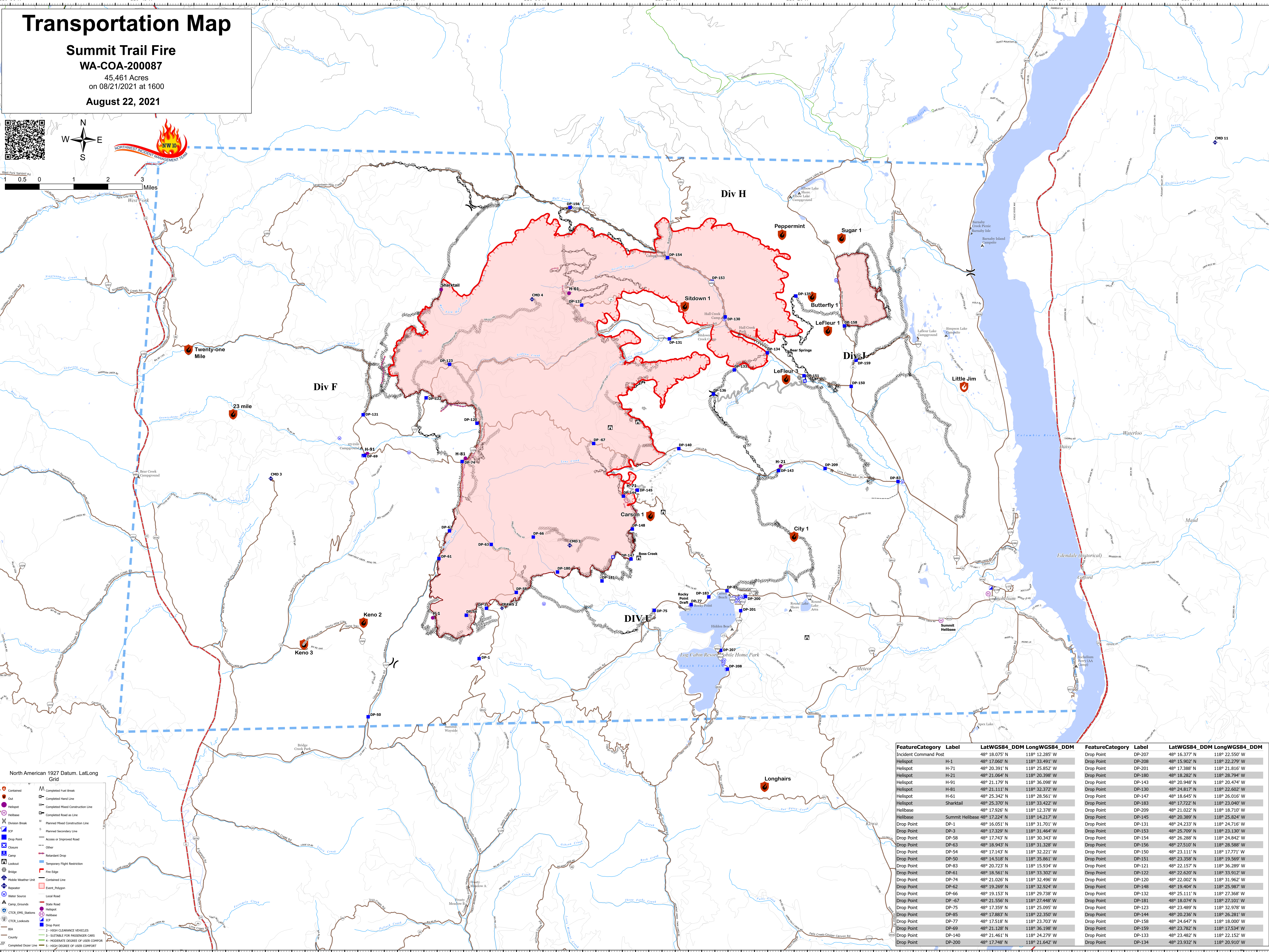
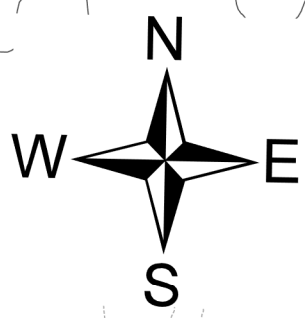
Summit Trail Fire

WA-COA-200087

45,461 Acres

on 08/21/2021 at 1600

August 22, 2021



North American 1927 Datum, Lat/Long Grid

Contoured	M	Completed Fuel Break
Out	DP	Completed Hand Line
Helispot	DP	Completed Mixed Construction Line
Helibase	DP	Completed Road as Line
Division Break	M	Planned Mixed Construction Line
ICP	S	Planned Secondary Line
Drop Point	DP	Access or Improved Road
Closure	DP	Other
Camp	DP	Retardant Drop
Lookout	DP	Temporary Flight Restriction
Bridge	DP	Fire Edge
Mobile Weather Unit	DP	Contained Line
Repeater	DP	Event Polygon
Water Source	DP	Local Road
Camp Grounds	DP	State Road
CTCR_DMS_Stations	DP	Helispot
CTCR_Lookouts	DP	Helibase
BIA	DP	Drop Point
County	DP	2 - HIGH CLEARANCE VEHICLES
Completed Doser Line	DP	3 - SUITABLE FOR PASSENGER CARS
	DP	4 - MODERATE DEGREE OF USER COMFORT
	DP	5 - HIGH DEGREE OF USER COMFORT

FeatureCategory	Label	LatWGS84_DDM	LongWGS84_DDM	FeatureCategory	Label	LatWGS84_DDM	LongWGS84_DDM
Incident Command Post	H-1	48° 18.075' N	118° 12.285' W	Drop Point	DP-207	48° 16.377' N	118° 22.550' W
Helispot	H-71	48° 17.060' N	118° 33.491' W	Drop Point	DP-208	48° 15.902' N	118° 22.279' W
Helispot	H-21	48° 20.391' N	118° 25.852' W	Drop Point	DP-201	48° 17.388' N	118° 21.816' W
Helispot	H-91	48° 21.064' N	118° 20.398' W	Drop Point	DP-180	48° 18.282' N	118° 26.794' W
Helispot	H-81	48° 21.179' N	118° 36.098' W	Drop Point	DP-143	48° 20.949' N	118° 20.474' W
Helispot	H-61	48° 21.111' N	118° 32.372' W	Drop Point	DP-130	48° 24.817' N	118° 23.602' W
Helispot	H-61	48° 25.342' N	118° 26.561' W	Drop Point	DP-147	48° 18.645' N	118° 26.016' W
Helispot	Sharktail	48° 25.370' N	118° 33.422' W	Drop Point	DP-183	48° 17.722' N	118° 23.040' W
Helibase		48° 17.926' N	118° 12.378' W	Drop Point	DP-209	48° 21.022' N	118° 18.710' W
Helibase	Summit Helibase	48° 17.224' N	118° 14.217' W	Drop Point	DP-145	48° 20.389' N	118° 25.824' W
Drop Point	DP-1	48° 16.051' N	118° 31.701' W	Drop Point	DP-131	48° 24.233' N	118° 24.716' W
Drop Point	DP-3	48° 17.329' N	118° 31.464' W	Drop Point	DP-153	48° 25.709' N	118° 23.130' W
Drop Point	DP-58	48° 17.743' N	118° 30.343' W	Drop Point	DP-154	48° 26.288' N	118° 24.842' W
Drop Point	DP-63	48° 18.943' N	118° 31.328' W	Drop Point	DP-156	48° 27.510' N	118° 28.588' W
Drop Point	DP-54	48° 17.143' N	118° 32.221' W	Drop Point	DP-150	48° 23.111' N	118° 17.771' W
Drop Point	DP-50	48° 14.518' N	118° 35.861' W	Drop Point	DP-151	48° 23.358' N	118° 19.569' W
Drop Point	DP-83	48° 20.723' N	118° 15.934' W	Drop Point	DP-121	48° 22.157' N	118° 36.289' W
Drop Point	DP-61	48° 18.561' N	118° 33.302' W	Drop Point	DP-122	48° 22.620' N	118° 33.912' W
Drop Point	DP-74	48° 21.026' N	118° 32.496' W	Drop Point	DP-120	48° 22.002' N	118° 31.962' W
Drop Point	DP-62	48° 19.269' N	118° 32.924' W	Drop Point	DP-148	48° 19.404' N	118° 25.987' W
Drop Point	DP-66	48° 19.153' N	118° 29.738' W	Drop Point	DP-132	48° 25.111' N	118° 27.368' W
Drop Point	DP-67	48° 21.556' N	118° 27.448' W	Drop Point	DP-181	48° 18.074' N	118° 21.101' W
Drop Point	DP-75	48° 17.359' N	118° 25.095' W	Drop Point	DP-123	48° 23.489' N	118° 32.978' W
Drop Point	DP-85	48° 17.883' N	118° 22.350' W	Drop Point	DP-144	48° 20.236' N	118° 26.281' W
Drop Point	DP-77	48° 17.518' N	118° 23.703' W	Drop Point	DP-158	48° 24.647' N	118° 18.000' W
Drop Point	DP-69	48° 21.128' N	118° 36.198' W	Drop Point	DP-159	48° 23.782' N	118° 17.534' W
Drop Point	DP-140	48° 21.461' N	118° 24.279' W	Drop Point	DP-133	48° 23.482' N	118° 22.152' W
Drop Point	DP-200	48° 17.748' N	118° 21.642' W	Drop Point	DP-134	48° 23.932' N	118° 20.910' W