

Ops IR Map

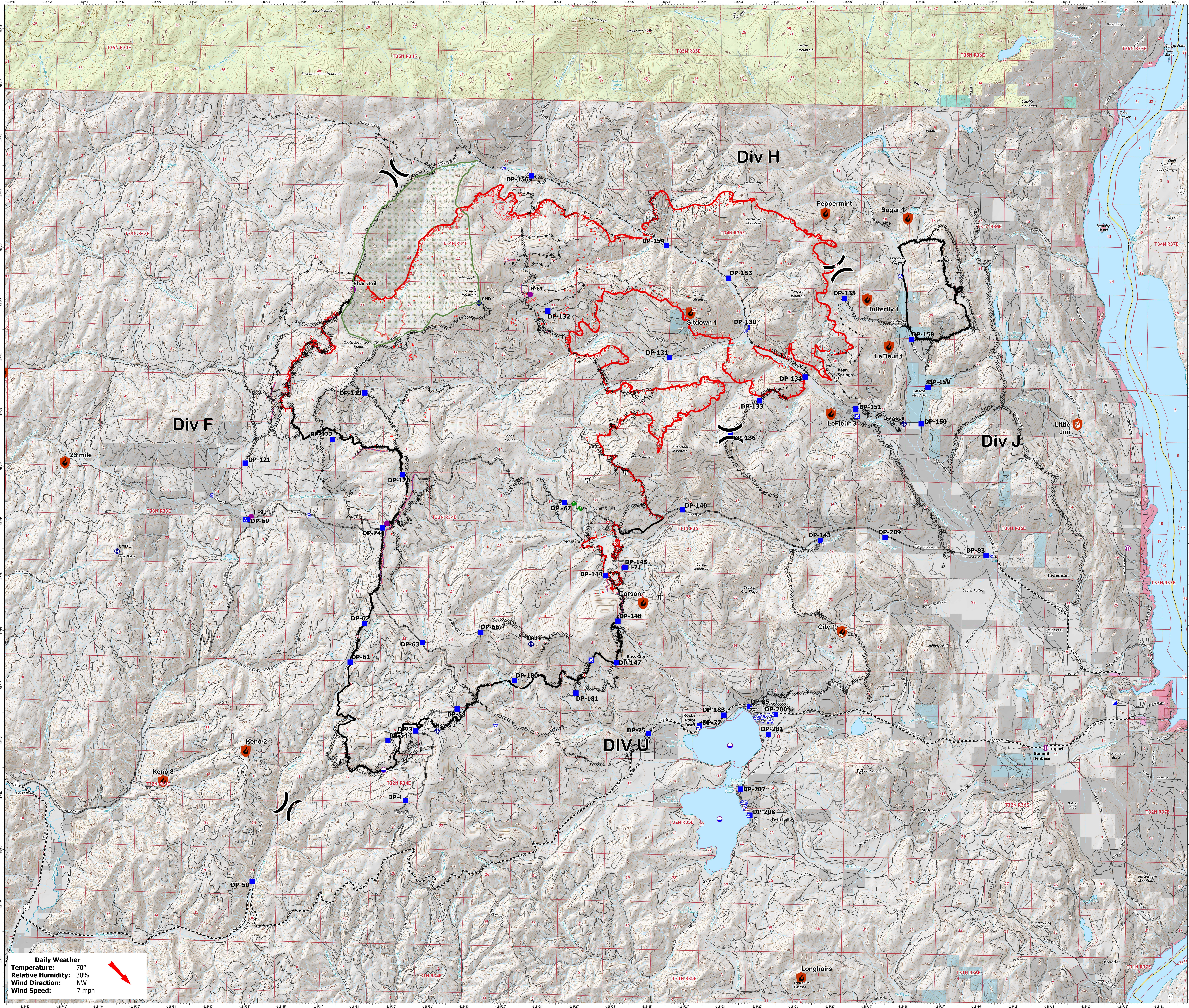
Summit Trail Fire

WA-COA-200087

August 23, 2021



45,559 acres on based on IR on 08/22/2021 at 2030

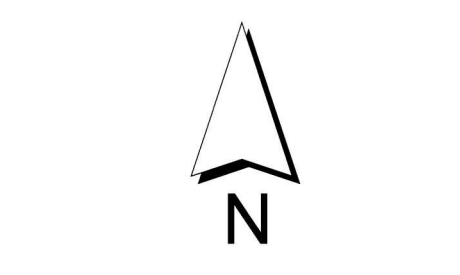


- Contained
- Out
- Dip Site
- Helispot
- Helibase
- Division Break
- Incident Command Post
- Drop Point
- Closure
- Camp
- Lookout
- Hot Spot - Spot Fire
- Comm Tower
- Bridge
- Road Repair
- Mobile Weather Unit
- Repeater
- Water Source
- Completed Dozer Line
- Completed Fuel Break
- Completed Hand Line
- Completed Mixed Construction Line
- Completed Road as Line
- Planned Mixed Construction Line
- Planned Road as Line
- Planned Secondary Line
- Access or Improved Road
- Other
- Retardant Drop
- Fire Edge
- Contained Line
- Wildfire Daily Fire Perimeter
- Main Route - Improved
- Main Route - Unimproved
- Local Road
- 4WD
- Trail
- Not Driveable
- Wilderness Area
- Private
- Colville Confederated Tribes
- Ferry County
- Indian Allotment Trust Lands
- Open water and lakes
- US Bureau of Reclamation
- US Forest Service
- WA DNR
- IR Point
- IR Points
- IR Isolated Heat Source
- Possible IR Heat Source
- IR Line
- IR Lines
- Edge of Imagery
- IR Polygon
- IR Polygons
- Area Covered by IR Flight
- Cloud Cover
- IR Heat Perimeter
- IR Intense Heat
- IR Scattered Heat
- Abe's Constructed Roads

Daily Weather
 Temperature: 70°
 Relative Humidity: 30%
 Wind Direction: NW
 Wind Speed: 7 mph



0 1/4 1/2 3/4 1
Miles



1:38,000
 NAD 1983 UTM Zone 11N
 NW Team 10