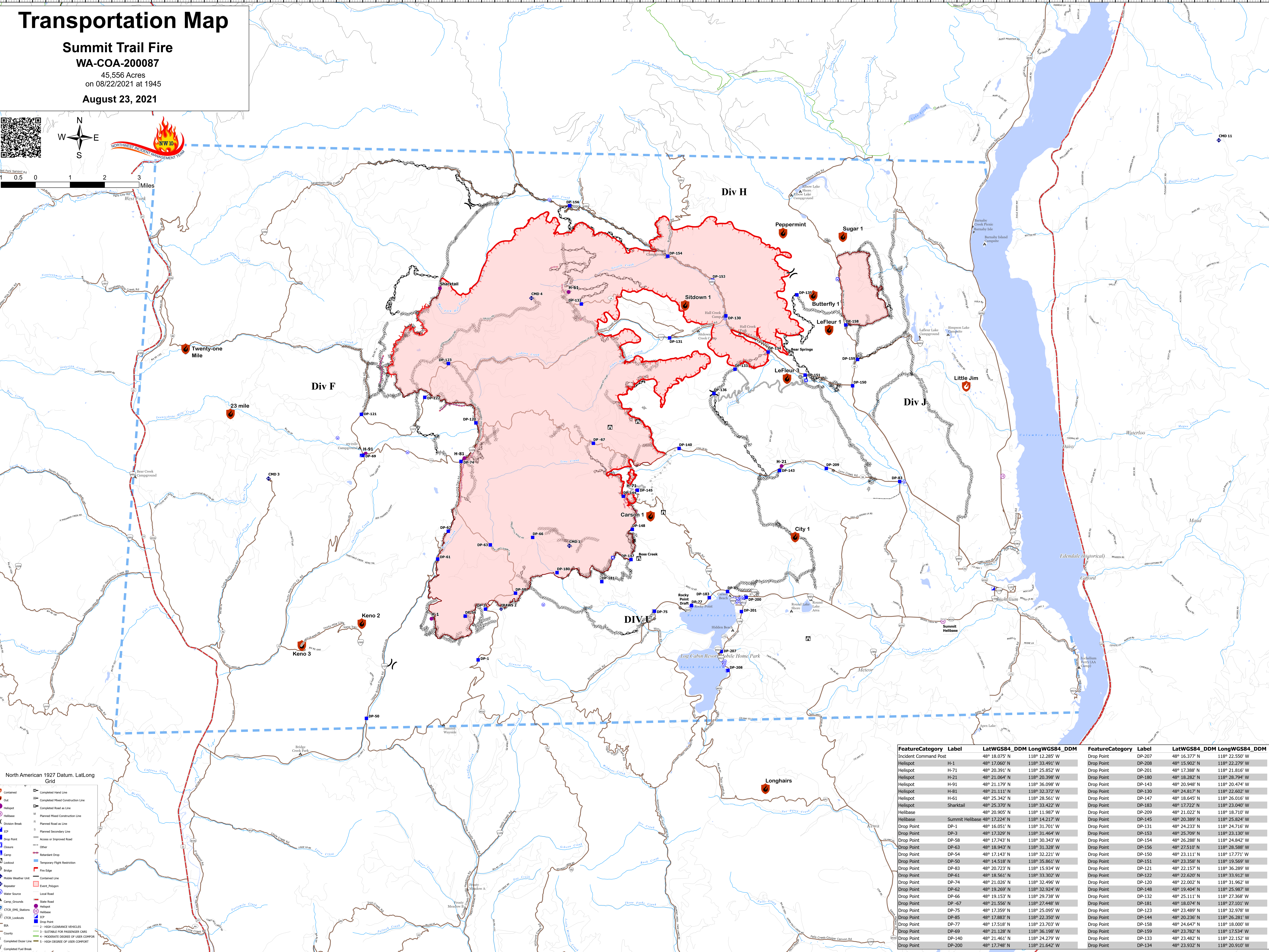
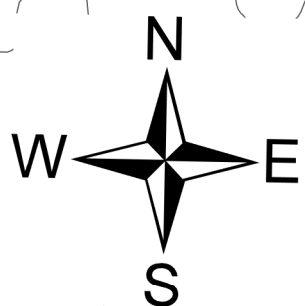


Transportation Map

Summit Trail Fire
WA-COA-200087
 45,556 Acres
 on 08/22/2021 at 1945
August 23, 2021



North American 1927 Datum, Lat/Long Grid

<ul style="list-style-type: none"> Contained Out Helispot Helibase Division Break ICP Drop Point Closure Camp Lookout Bridge Mobile Weather Unit Repeater Water Source Camp Grounds CTCR_EMS_Station CTCR_Lookouts BIA County Completed Deer Line Completed Fuel Break 	<ul style="list-style-type: none"> Completed Hand Line Completed Mixed Construction Line Completed Road as Line Planned Mixed Construction Line Planned Road as Line Planned Secondary Line Access or Improved Road Other Retardant Drop Temporary Flight Restriction Fire Line Contained Line Event Polygon Local Road State Road Helispot Helibase Drop Point High Clearance Vehicles Suitable for Passenger Cars Moderate Degree of User Caution High Degree of User Caution
---	---

FeatureCategory	Label	LatWGS84_DDM	LongWGS84_DDM	FeatureCategory	Label	LatWGS84_DDM	LongWGS84_DDM
Incident Command Post		48° 18.075' N	118° 12.285' W	Drop Point	DP-207	48° 16.377' N	118° 22.550' W
Helispot	H-1	48° 17.060' N	118° 33.491' W	Drop Point	DP-208	48° 15.902' N	118° 22.279' W
Helispot	H-71	48° 20.391' N	118° 25.852' W	Drop Point	DP-201	48° 17.388' N	118° 21.816' W
Helispot	H-21	48° 21.064' N	118° 20.398' W	Drop Point	DP-180	48° 18.282' N	118° 26.794' W
Helispot	H-91	48° 21.179' N	118° 36.098' W	Drop Point	DP-143	48° 20.949' N	118° 20.474' W
Helispot	H-81	48° 21.111' N	118° 32.372' W	Drop Point	DP-130	48° 24.817' N	118° 22.602' W
Helispot	H-61	48° 25.342' N	118° 28.561' W	Drop Point	DP-147	48° 18.645' N	118° 26.016' W
Helispot	Sharktail	48° 25.370' N	118° 33.422' W	Drop Point	DP-183	48° 17.722' N	118° 23.040' W
Helibase		48° 20.905' N	118° 11.987' W	Drop Point	DP-209	48° 21.022' N	118° 18.710' W
Helibase	Summit Helibase	48° 17.224' N	118° 14.217' W	Drop Point	DP-145	48° 20.389' N	118° 25.824' W
Drop Point	DP-1	48° 16.051' N	118° 31.701' W	Drop Point	DP-131	48° 24.233' N	118° 24.716' W
Drop Point	DP-3	48° 17.329' N	118° 31.464' W	Drop Point	DP-153	48° 25.709' N	118° 23.130' W
Drop Point	DP-58	48° 17.743' N	118° 30.343' W	Drop Point	DP-154	48° 26.288' N	118° 24.842' W
Drop Point	DP-63	48° 18.943' N	118° 31.328' W	Drop Point	DP-156	48° 27.510' N	118° 24.842' W
Drop Point	DP-54	48° 17.143' N	118° 32.221' W	Drop Point	DP-150	48° 23.111' N	118° 17.771' W
Drop Point	DP-50	48° 14.518' N	118° 35.861' W	Drop Point	DP-151	48° 23.358' N	118° 19.569' W
Drop Point	DP-83	48° 20.723' N	118° 15.934' W	Drop Point	DP-121	48° 22.157' N	118° 36.289' W
Drop Point	DP-61	48° 18.561' N	118° 33.302' W	Drop Point	DP-122	48° 22.620' N	118° 33.912' W
Drop Point	DP-74	48° 21.026' N	118° 32.496' W	Drop Point	DP-120	48° 22.002' N	118° 31.962' W
Drop Point	DP-62	48° 19.269' N	118° 32.924' W	Drop Point	DP-148	48° 19.404' N	118° 25.987' W
Drop Point	DP-66	48° 19.153' N	118° 29.738' W	Drop Point	DP-132	48° 25.111' N	118° 27.368' W
Drop Point	DP-67	48° 21.556' N	118° 27.448' W	Drop Point	DP-181	48° 18.074' N	118° 21.101' W
Drop Point	DP-75	48° 17.359' N	118° 25.095' W	Drop Point	DP-123	48° 23.489' N	118° 32.978' W
Drop Point	DP-85	48° 17.883' N	118° 22.350' W	Drop Point	DP-144	48° 20.236' N	118° 26.281' W
Drop Point	DP-77	48° 17.518' N	118° 23.703' W	Drop Point	DP-158	48° 24.647' N	118° 18.000' W
Drop Point	DP-69	48° 21.128' N	118° 36.198' W	Drop Point	DP-159	48° 23.782' N	118° 17.534' W
Drop Point	DP-140	48° 21.461' N	118° 24.279' W	Drop Point	DP-133	48° 23.482' N	118° 22.152' W
Drop Point	DP-200	48° 17.748' N	118° 21.642' W	Drop Point	DP-134	48° 23.932' N	118° 20.910' W