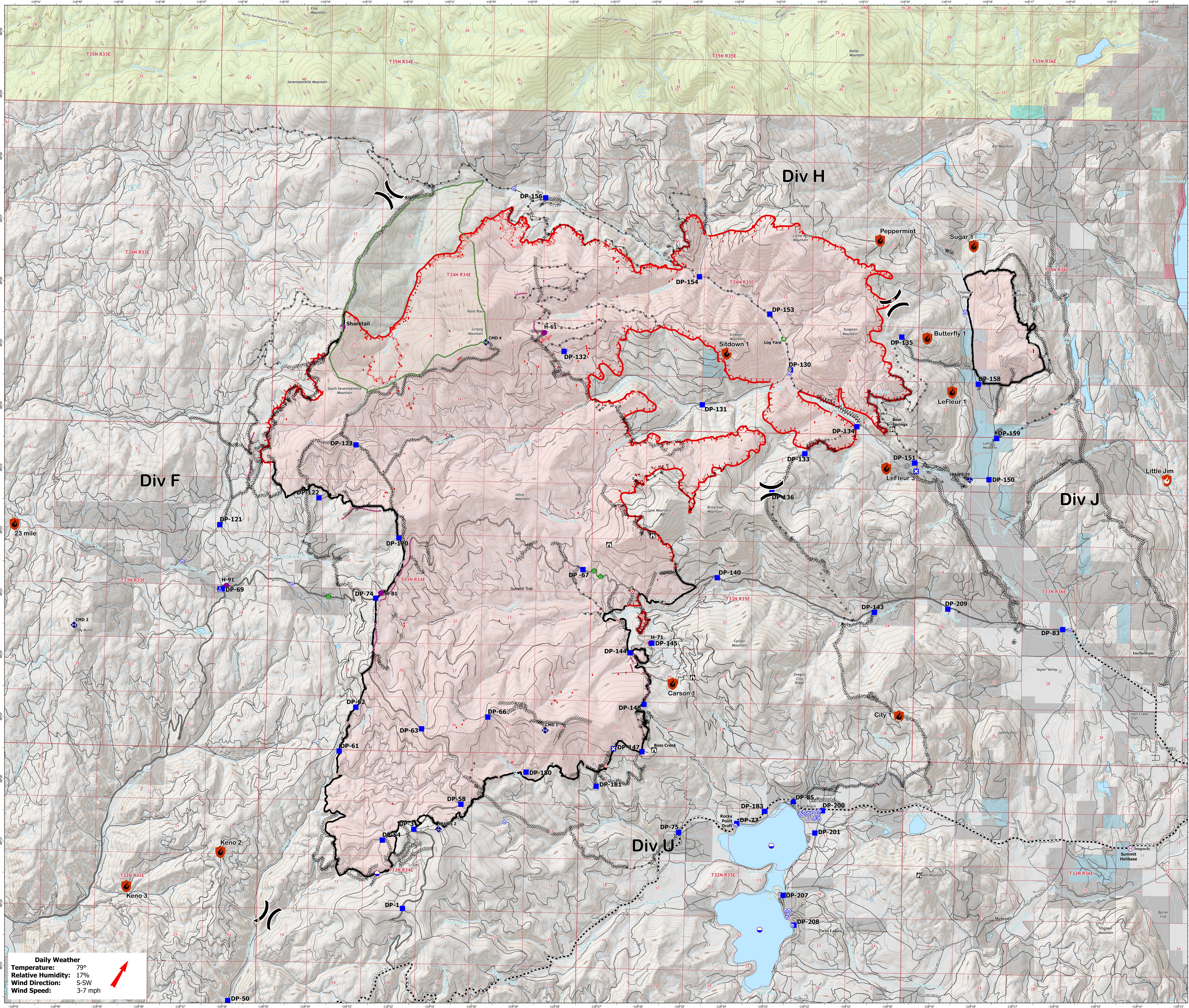




45,571 acres on based on IR  
 on 08/24/2021 at 2045

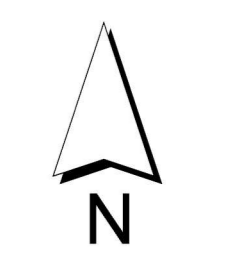


- Contained
- Out
- Dip Site
- Helispot
- Helibase
- Division Break
- Drop Point
- Closure
- Camp
- Lookout
- Hot Spot - Spot Fire
- Comm Tower
- Bridge
- Road Repair
- Landing or Log Deck
- Mobile Weather Unit
- Repeater
- Water Source
- Completed Dozer Line
- Completed Fuel Break
- Completed Hand Line
- Completed Mixed Construction Line
- Completed Road as Line
- Planned Mixed Construction Line
- Planned Road as Line
- Planned Secondary Line
- Access or Improved Road
- Other
- Retardant Drop
- Fire Edge
- Contained Line
- Wildfire Daily Fire Perimeter
- Main Route - Improved
- Main Route - Unimproved
- Local Road
- 4WD
- Trail
- Not Driveable
- Wilderness Area
- Private
- Colville Confederated Tribes
- Ferry County
- Indian Allotment Trust Lands
- Open water and lakes
- US Bureau of Reclamation
- US Forest Service
- WA DNR
- Abe's Constructed Roads

**Daily Weather**  
 Temperature: 79°  
 Relative Humidity: 17%  
 Wind Direction: S-SW  
 Wind Speed: 3-7 mph



0 1/4 1/2 3/4 1  
 Miles



1:33,398  
 NAD 1983 UTM Zone 11N  
 NW Team 10