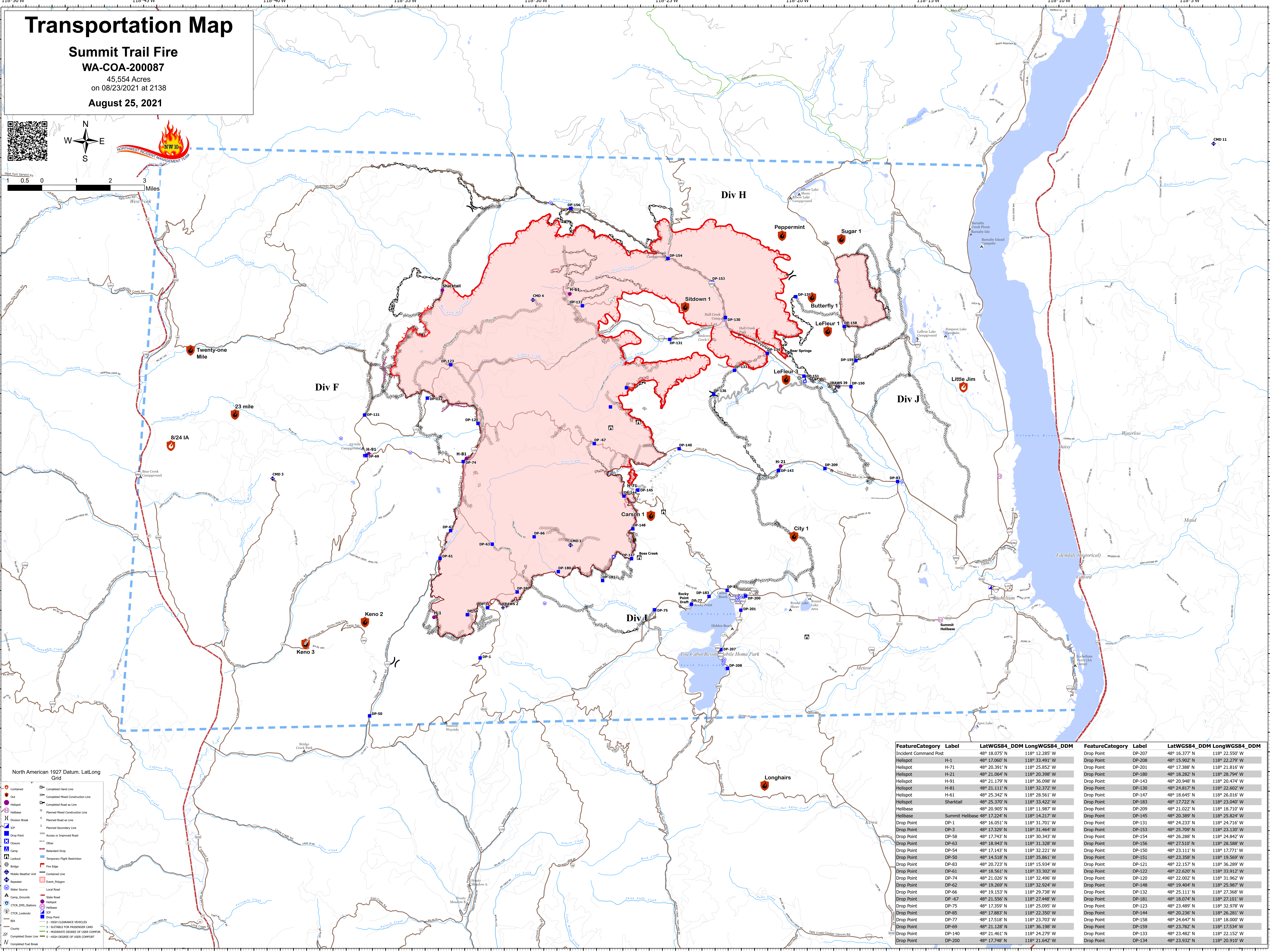
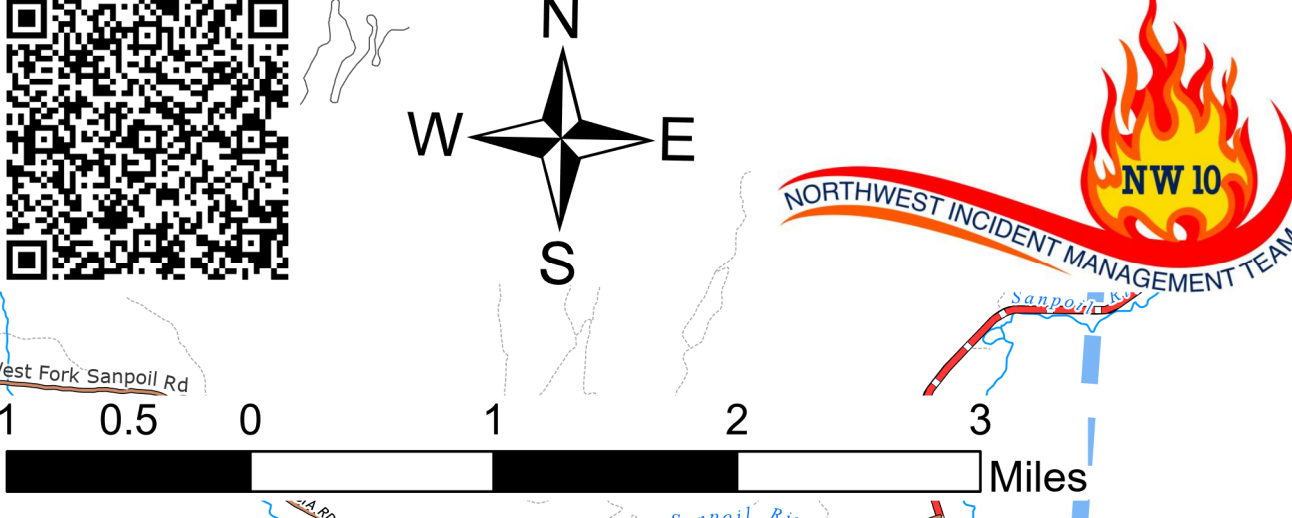


# Transportation Map

**Summit Trail Fire**  
**WA-COA-200087**  
 45,554 Acres  
 on 08/23/2021 at 2138  
**August 25, 2021**



North American 1927 Datum, Lat/Long Grid

Contained	Completed Hand Line
Out	Completed Mixed Construction Line
Helispot	Completed Road as Line
Helibase	Planned Mixed Construction Line
Division Break	Planned Road as Line
ICP	Planned Secondary Line
Drop Point	Access or Improved Road
Closure	Other
Camp	Retardant Drop
Lookout	Temporary Flight Restriction
Bridge	Fire Edge
Mobile Weather Unit	Contained Line
Repeater	Event Polygon
Water Source	Local Road
Camp Grounds	State Road
CTCR_EMS_Station	Helispot
CTCR_Lookouts	Helibase
BIA	Drop Point
County	1 - HIGH CLEARANCE VEHICLES
Completed Deer Line	2 - SUITABLE FOR PASSENGER CARS
Completed Fuel Break	3 - MODERATE DEGREE OF USER DISPORT
	4 - HIGH DEGREE OF USER DISPORT

FeatureCategory	Label	LatWGS84_DDM	LongWGS84_DDM	FeatureCategory	Label	LatWGS84_DDM	LongWGS84_DDM
Incident Command Post		48° 18.075' N	118° 12.285' W	Drop Point	DP-207	48° 16.377' N	118° 22.550' W
Helispot	H-1	48° 17.060' N	118° 33.491' W	Drop Point	DP-208	48° 15.902' N	118° 22.279' W
Helispot	H-71	48° 20.391' N	118° 25.852' W	Drop Point	DP-201	48° 17.388' N	118° 21.816' W
Helispot	H-21	48° 21.064' N	118° 20.398' W	Drop Point	DP-180	48° 18.282' N	118° 26.794' W
Helispot	H-91	48° 21.179' N	118° 36.098' W	Drop Point	DP-143	48° 20.949' N	118° 20.474' W
Helispot	H-81	48° 21.111' N	118° 32.372' W	Drop Point	DP-130	48° 24.817' N	118° 22.602' W
Helispot	H-61	48° 25.342' N	118° 28.561' W	Drop Point	DP-147	48° 18.645' N	118° 26.016' W
Helispot	Sharktail	48° 25.370' N	118° 33.422' W	Drop Point	DP-183	48° 17.722' N	118° 23.040' W
Helibase		48° 20.905' N	118° 11.987' W	Drop Point	DP-209	48° 21.022' N	118° 18.710' W
Helibase	Summit Helibase	48° 17.224' N	118° 14.217' W	Drop Point	DP-145	48° 20.389' N	118° 25.824' W
Drop Point	DP-1	48° 16.051' N	118° 31.701' W	Drop Point	DP-131	48° 24.733' N	118° 24.716' W
Drop Point	DP-3	48° 17.329' N	118° 31.464' W	Drop Point	DP-153	48° 25.709' N	118° 23.130' W
Drop Point	DP-58	48° 17.743' N	118° 30.343' W	Drop Point	DP-154	48° 26.288' N	118° 24.842' W
Drop Point	DP-63	48° 18.943' N	118° 31.328' W	Drop Point	DP-156	48° 27.510' N	118° 28.588' W
Drop Point	DP-54	48° 17.143' N	118° 32.221' W	Drop Point	DP-120	48° 23.111' N	118° 17.771' W
Drop Point	DP-50	48° 14.518' N	118° 35.861' W	Drop Point	DP-151	48° 23.358' N	118° 19.569' W
Drop Point	DP-83	48° 20.723' N	118° 15.934' W	Drop Point	DP-121	48° 22.157' N	118° 36.289' W
Drop Point	DP-61	48° 18.561' N	118° 33.302' W	Drop Point	DP-122	48° 22.620' N	118° 33.912' W
Drop Point	DP-74	48° 21.026' N	118° 32.496' W	Drop Point	DP-120	48° 22.002' N	118° 31.962' W
Drop Point	DP-62	48° 19.269' N	118° 32.924' W	Drop Point	DP-148	48° 19.404' N	118° 25.987' W
Drop Point	DP-66	48° 19.153' N	118° 29.738' W	Drop Point	DP-132	48° 25.111' N	118° 27.368' W
Drop Point	DP-67	48° 21.556' N	118° 27.448' W	Drop Point	DP-181	48° 18.074' N	118° 21.101' W
Drop Point	DP-75	48° 17.359' N	118° 25.095' W	Drop Point	DP-123	48° 23.489' N	118° 32.978' W
Drop Point	DP-85	48° 17.883' N	118° 22.350' W	Drop Point	DP-144	48° 20.236' N	118° 26.281' W
Drop Point	DP-77	48° 17.518' N	118° 23.703' W	Drop Point	DP-158	48° 24.647' N	118° 18.000' W
Drop Point	DP-69	48° 21.128' N	118° 36.198' W	Drop Point	DP-159	48° 23.782' N	118° 17.534' W
Drop Point	DP-140	48° 21.461' N	118° 24.279' W	Drop Point	DP-133	48° 23.482' N	118° 22.152' W
Drop Point	DP-200	48° 17.748' N	118° 21.642' W	Drop Point	DP-134	48° 23.932' N	118° 20.910' W