

IAP MAP

Summit Trail

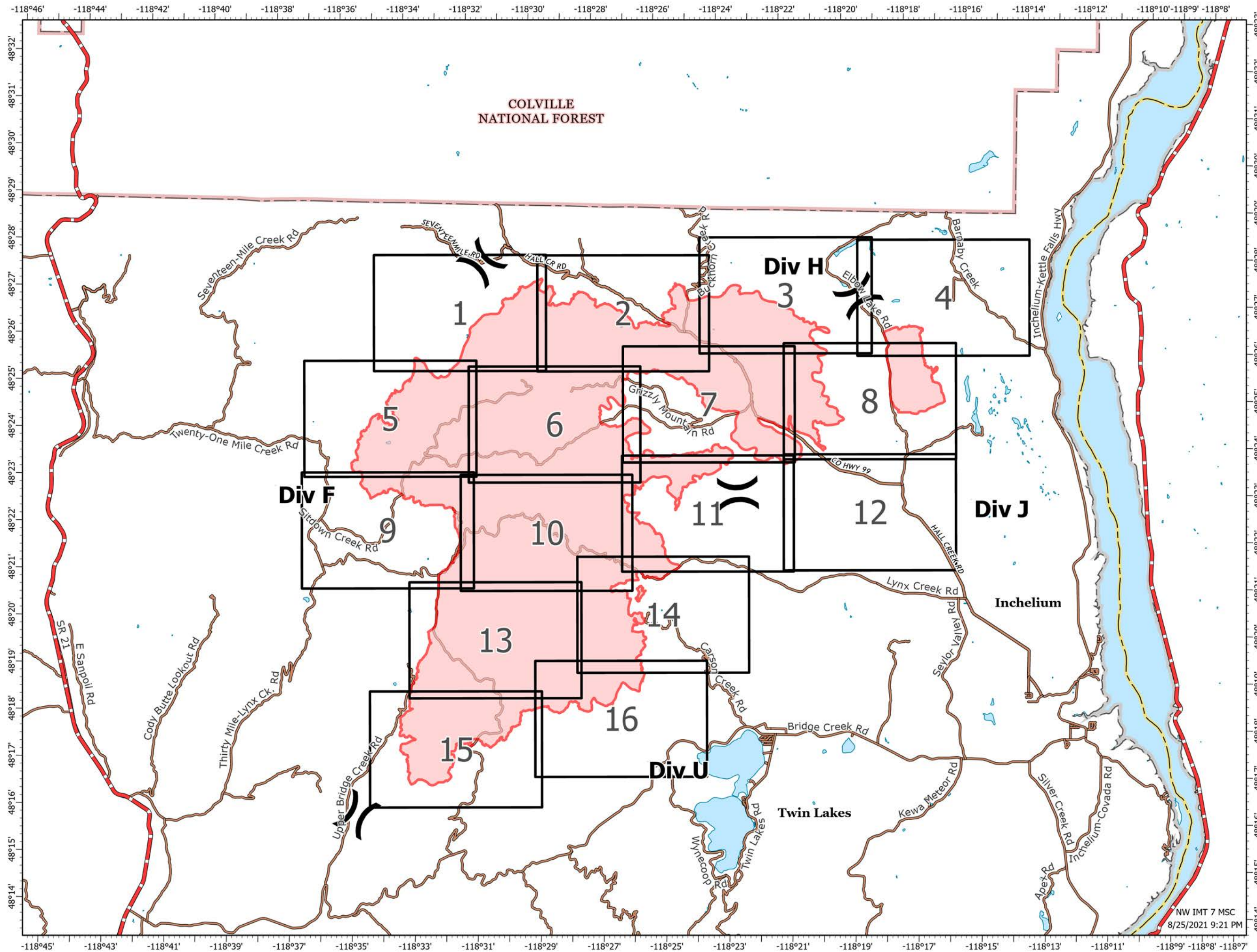
WA-COA-200087

45,553 Acres
on 08/25/2021 at 2045

August 26, 2021



- (X) Division Break
- Fire Perimeter
- Additional Rd Selections
- Comprehensive Roads Hosted
- Owner
 - BIA
 - City
 - County
 - Other Drive-able
 - Other Not Drive-able
 - Private
 - State
 - Tribe
 - Highway



1:140,000
NAD 1983
UTM 11N

NW IMT 7 MSC
8/25/2021 9:21 PM

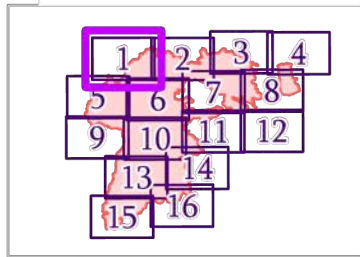
IAP MAP

Summit Trail

WA-COA-200087

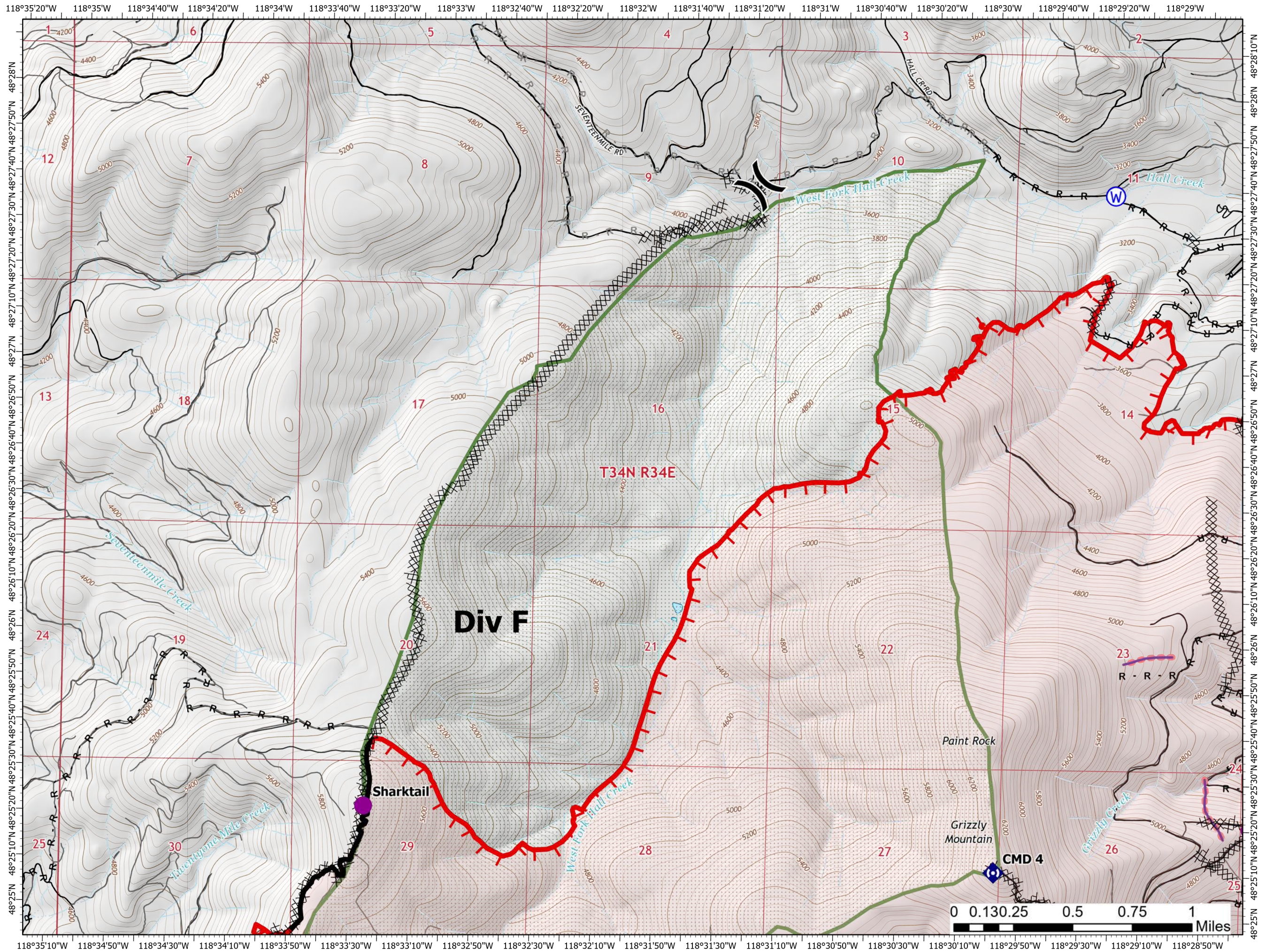
45,553 Acres
on 08/25/2021 at 2045

August 26, 2021



Page 1 of 16

- Helispot
- Division Break
- Drop Point
- Repeater
- Water Source
- Completed Dozer Line
- Completed Road as Line
- Planned Road as Line
- Retardant Drop
- Fire Edge
- Contained Line
- Fire Perimeter
- State or Territory
- Local Road
- County or Equivalent
- Wilderness Area
- Driveable
- Not Driveable



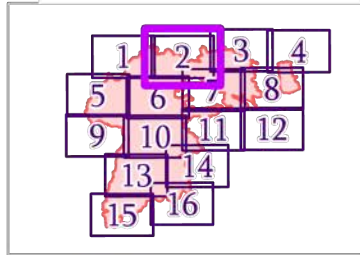
IAP MAP

Summit Trail

WA-COA-200087

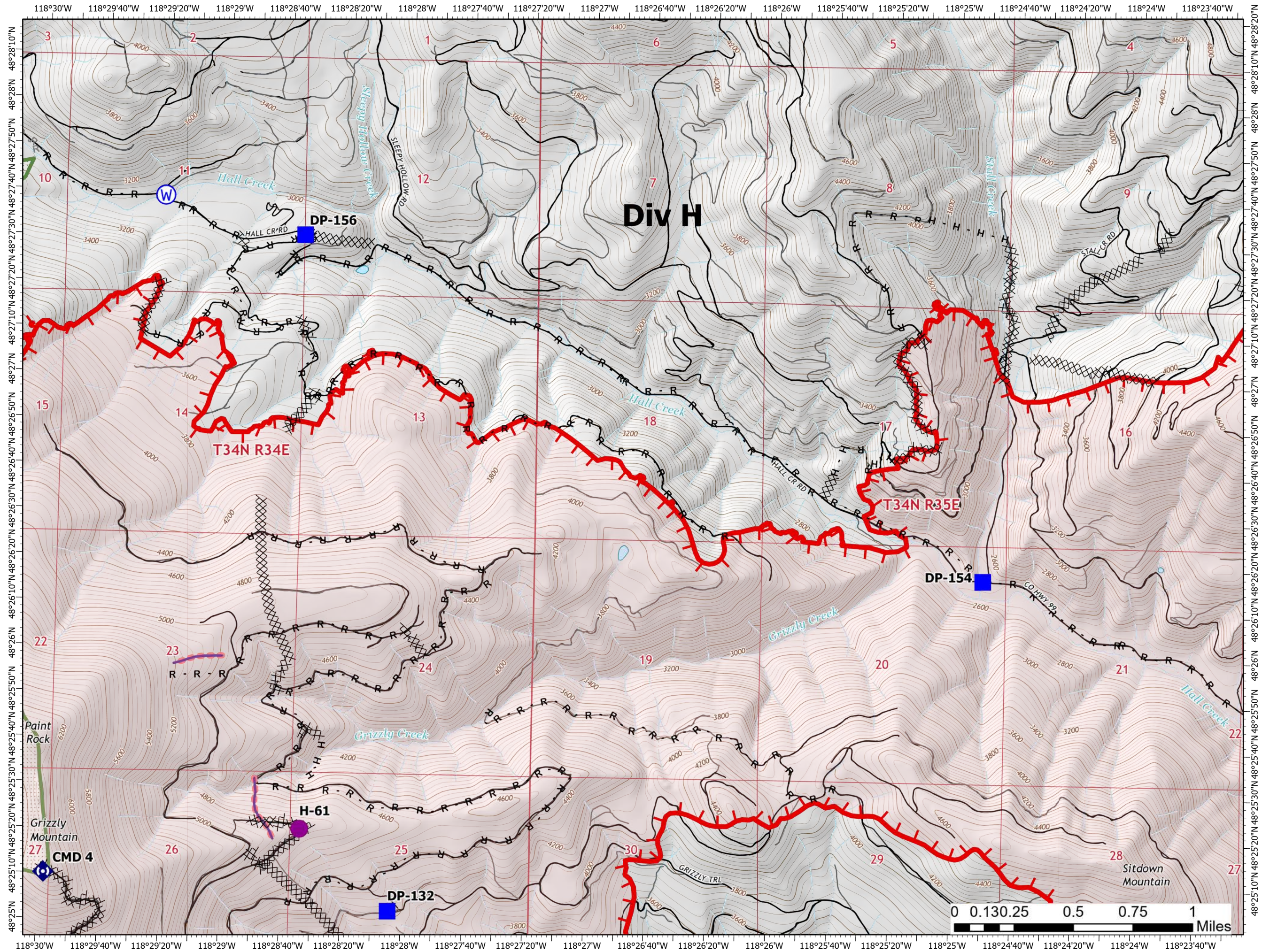
45,553 Acres
on 08/25/2021 at 2045

August 26, 2021



Page 2 of 16

- Helispot
- Drop Point
- ◆ Repeater
- W Water Source
- ⊗ Completed Dozer Line
- H Completed Hand Line
- R Completed Road as Line
- R Planned Road as Line
- Retardant Drop
- Fire Edge
- Fire Perimeter
- State or Territory
- Local Road
- 4WD
- ▭ County or Equivalent
- Wilderness Area
- Driveable
- Not Driveable



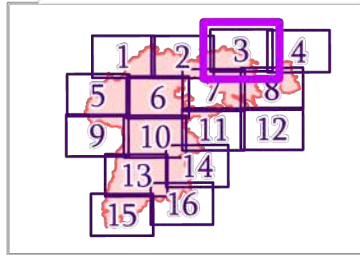
IAP MAP

Summit Trail

WA-COA-200087

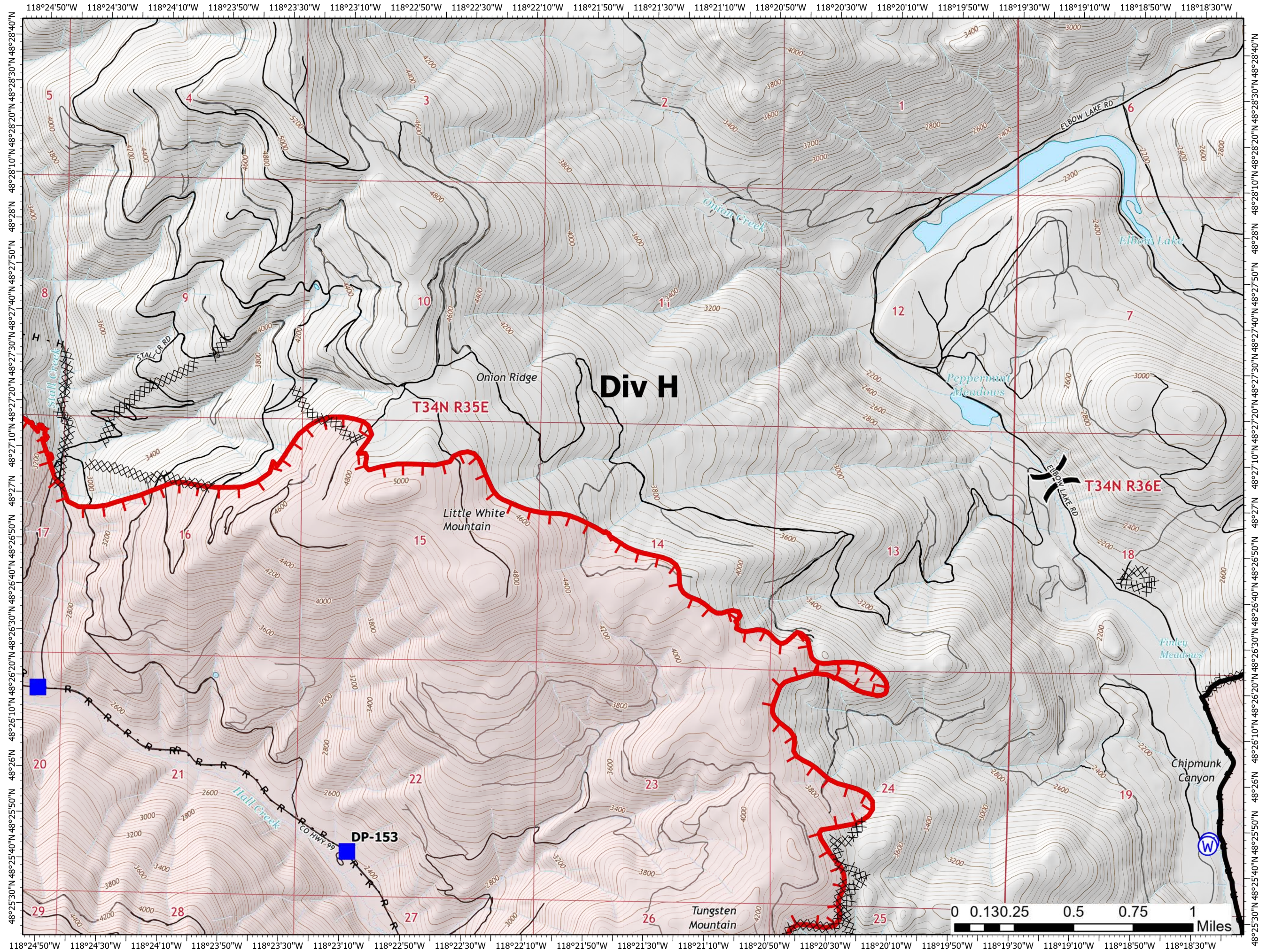
45,553 Acres
on 08/25/2021 at 2045

August 26, 2021



Page 3 of 16

- Division Break
- Drop Point
- Landing or Log Deck
- Water Source
- Completed Dozer Line
- Completed Hand Line
- Completed Road as Line
- Fire Edge
- Contained Line
- Fire Perimeter
- State or Territory
- Local Road
- 4WD
- County or Equivalent
- Driveable
- Not Driveable



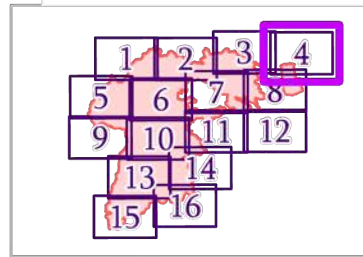
IAP MAP

Summit Trail

WA-COA-200087

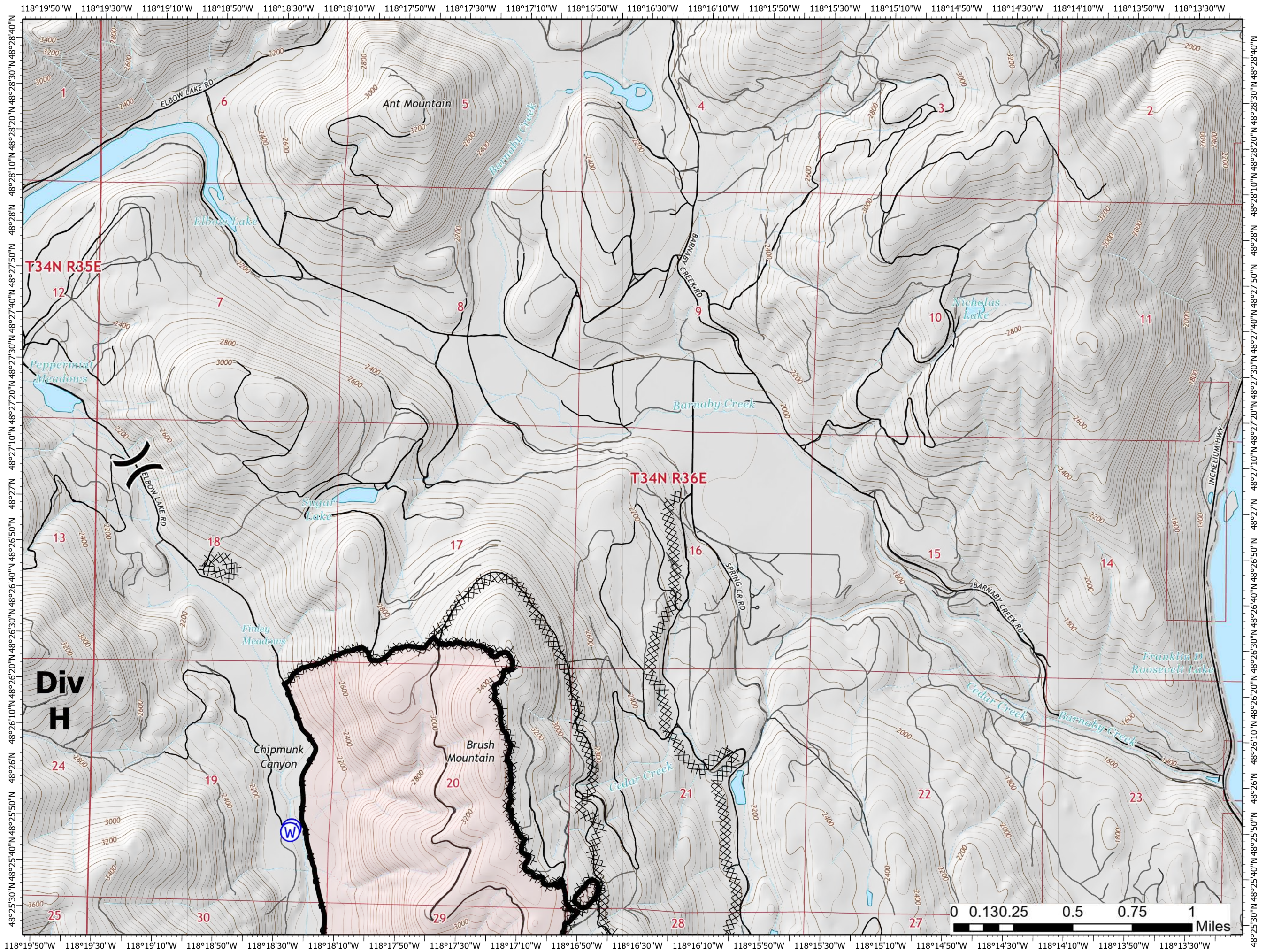
45,553 Acres
on 08/25/2021 at 2045

August 26, 2021



Page 4 of 16

- Division Break
- Drop Point
- Water Source
- Completed Dozer Line
- Completed Road as Line
- Contained Line
- Fire Perimeter
- State or Territory
- Local Road
- County or Equivalent
- Driveable
- Not Driveable



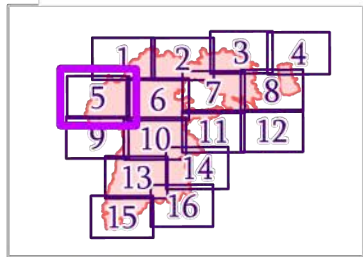
IAP MAP

Summit Trail

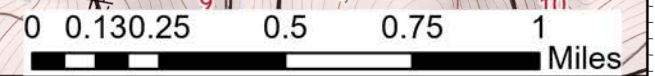
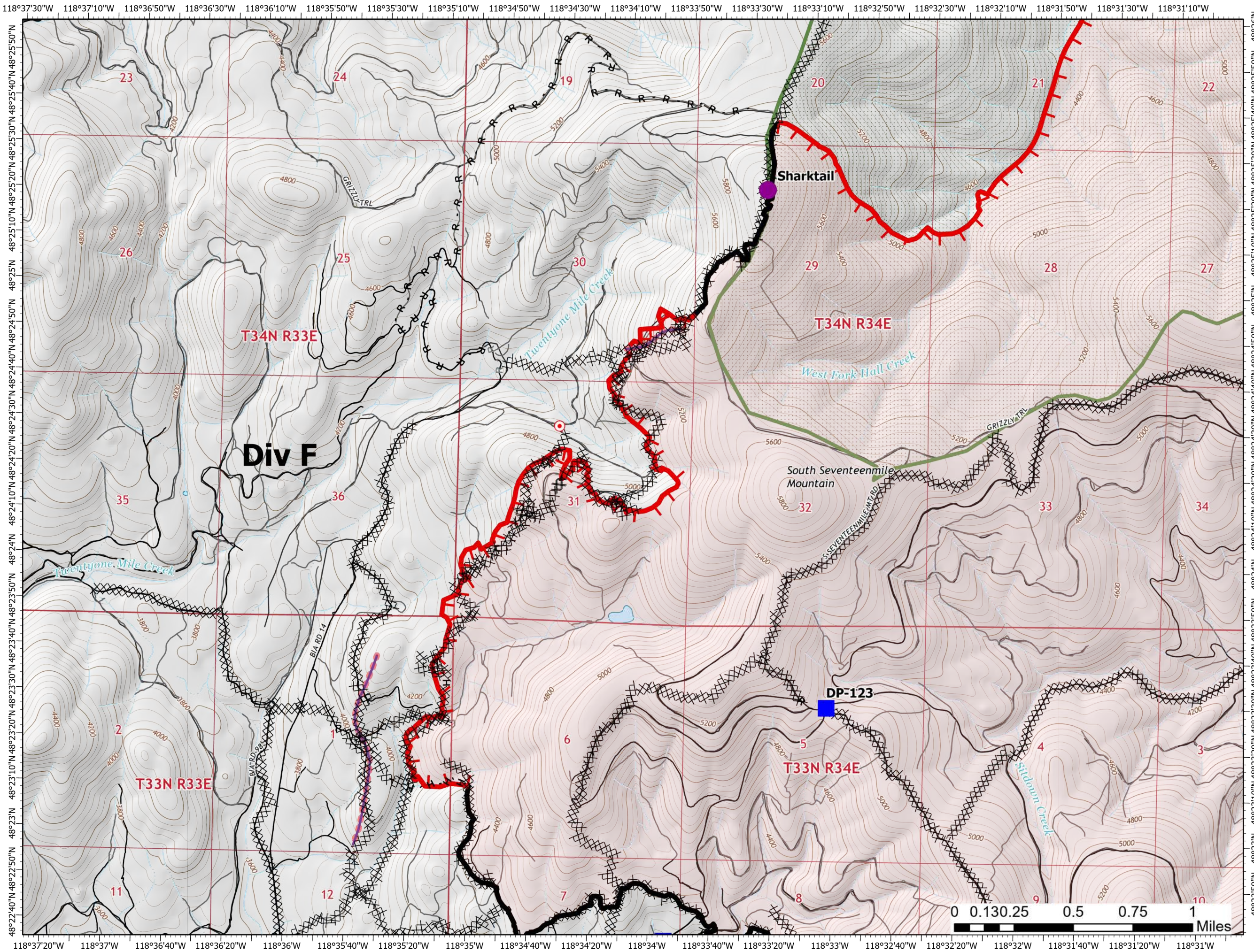
WA-COA-200087

45,553 Acres
on 08/25/2021 at 2045

August 26, 2021



- Page 5 of 16
- Helispot
 - Drop Point
 - Hot Spot - Spot Fire
 - ⊗ Completed Dozer Line
 - H Completed Hand Line
 - R Completed Road as Line
 - R Planned Road as Line
 - Retardant Drop
 - Fire Edge
 - Contained Line
 - Fire Perimeter
 - State or Territory
 - Local Road
 - ▭ County or Equivalent
 - Wilderness Area
 - Driveable
 - Not Driveable



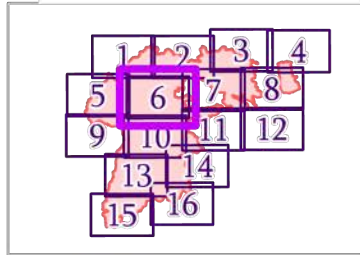
IAP MAP

Summit Trail

WA-COA-200087

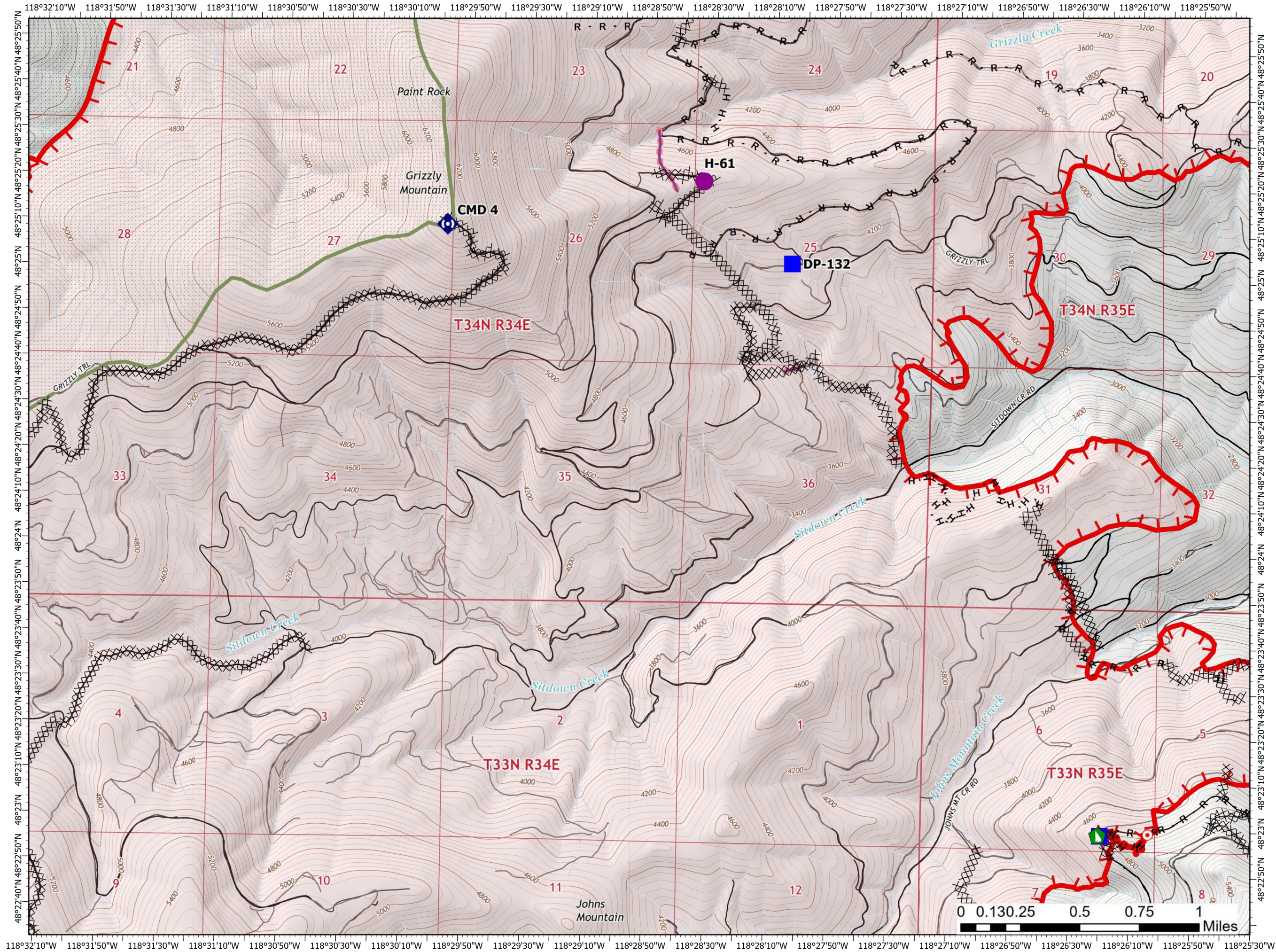
45,553 Acres
on 08/25/2021 at 2045

August 26, 2021



Page 6 of 16

- Helispot
- Drop Point
- Hot Spot - Spot Fire
- ▶ Dozer Push
- ◆ Repeater
- ⊗ Completed Dozer Line
- H Completed Hand Line
- R Completed Road as Line
- Retardant Drop
- Fire Edge
- Fire Perimeter
- State or Territory
- Local Road
- ▭ County or Equivalent
- Wilderness Area
- Driveable
- Not Driveable



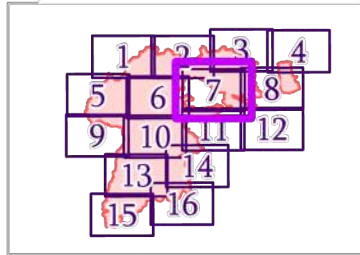
IAP MAP

Summit Trail

WA-COA-200087

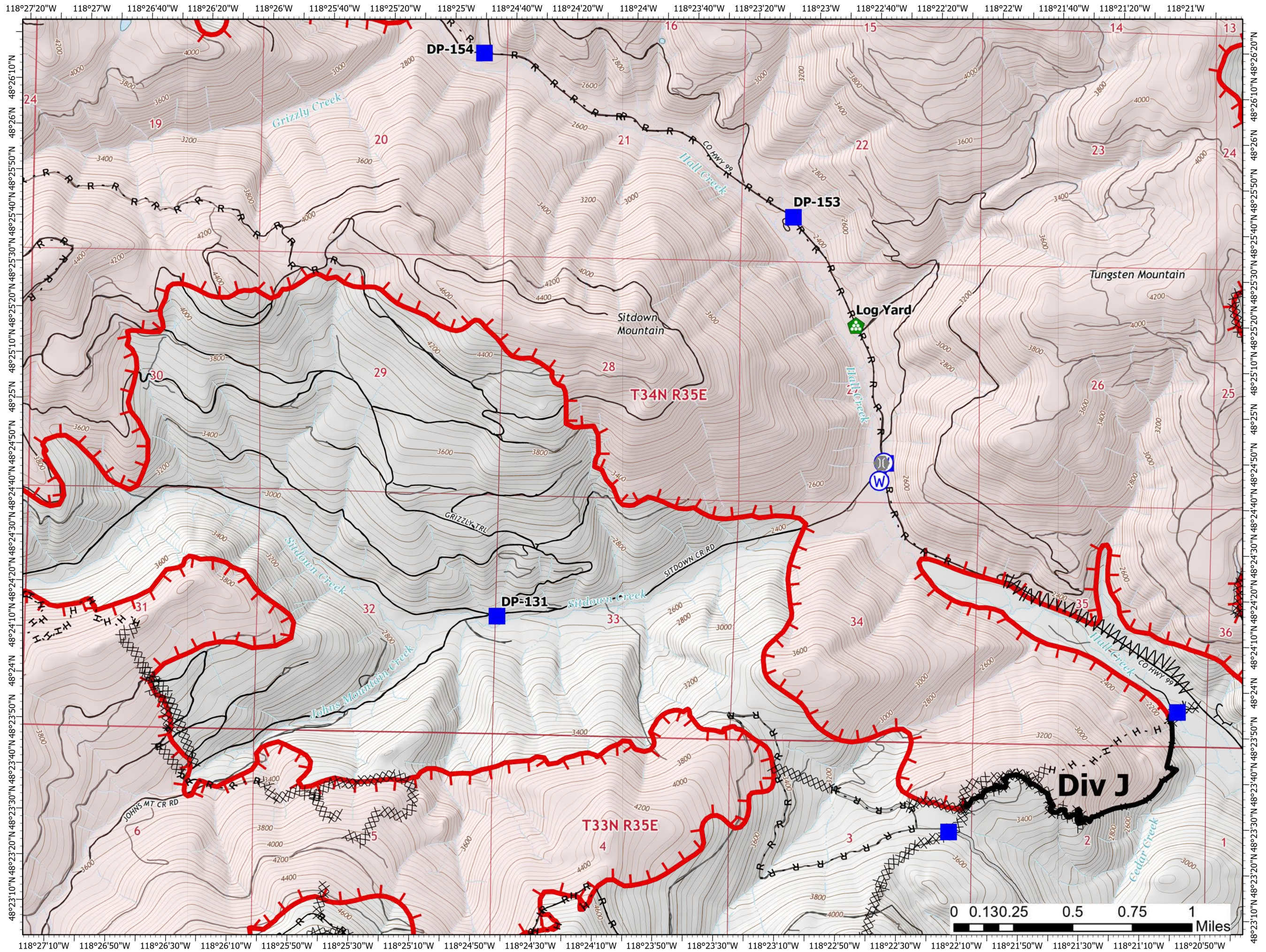
45,553 Acres
on 08/25/2021 at 2045

August 26, 2021



Drop Point Page 7 of 16

- Drop Point
- Hot Spot - Spot Fire
- Bridge
- Landing or Log Deck
- Dozer Push
- Water Source
- Completed Dozer Line
- Completed Fuel Break
- Completed Hand Line
- Completed Road as Line
- Access or Improved Road
- Fire Edge
- Contained Line
- Fire Perimeter
- State or Territory
- Local Road
- County or Equivalent
- Driveable
- Not Driveable



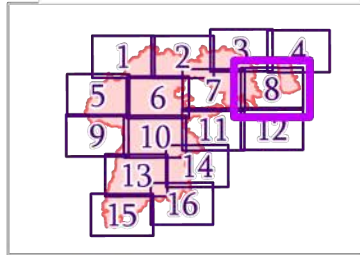
IAP MAP

Summit Trail

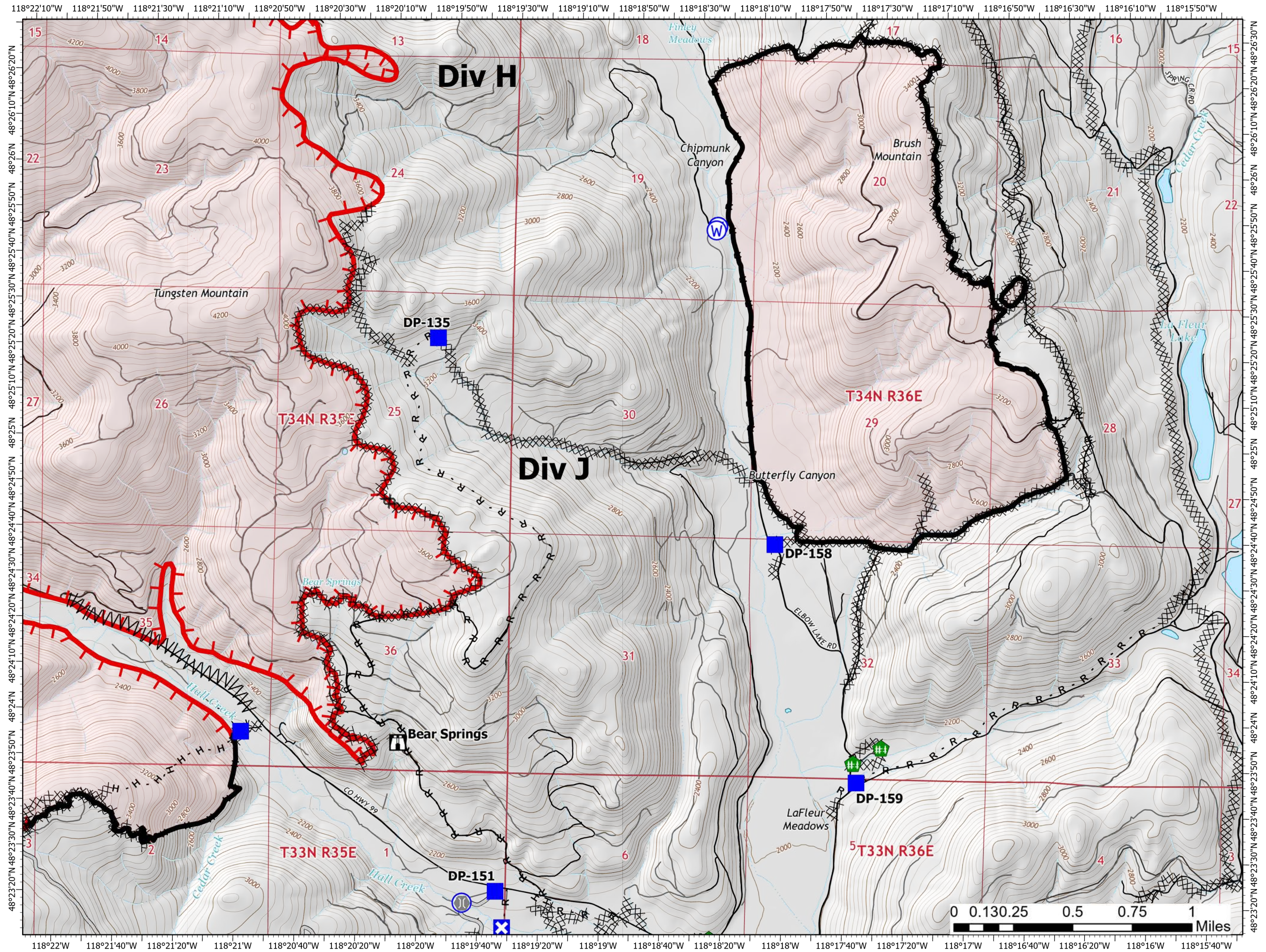
WA-COA-200087

45,553 Acres
on 08/25/2021 at 2045

August 26, 2021



- Drop Point
- ✕ Closure
- 🏠 Lookout
- ⚙️ Bridge
- 🌿 Fence - Cut/Damaged
- Ⓜ Water Source
- ✂️ Completed Dozer Line
- ⚡ Completed Fuel Break
- H Completed Hand Line
- R Completed Road as Line
- Access or Improved Road
- ▬ Fire Edge
- ▬ Contained Line
- ▬ Fire Perimeter
- State or Territory
- Local Road
- - - 4WD
- County or Equivalent
- Driveable
- Not Driveable



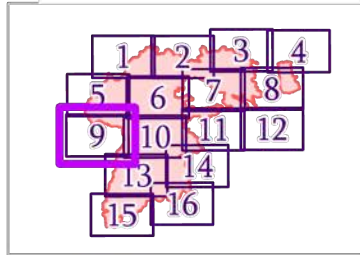
IAP MAP

Summit Trail

WA-COA-200087

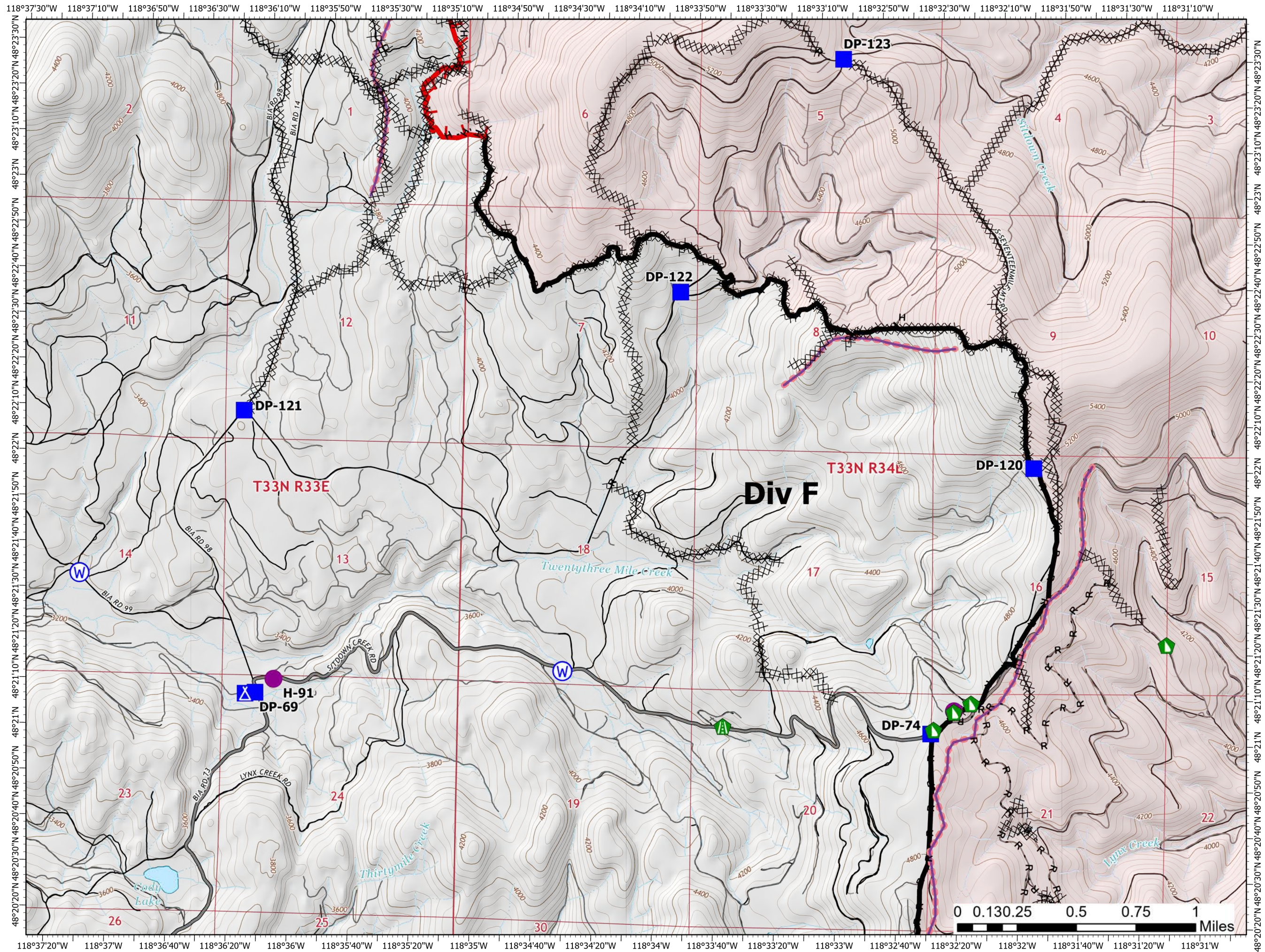
45,553 Acres
on 08/25/2021 at 2045

August 26, 2021



Page 9 of 16

- Helispot
- Drop Point
- ▲ Camp
- ▲ Road Repair
- ▲ Dozer Push
- ⊙ Water Source
- ⊗ Completed Dozer Line
- H Completed Hand Line
- R Completed Road as Line
- Retardant Drop
- Fire Edge
- Contained Line
- Fire Perimeter
- State or Territory
- Main Route - Unimproved
- Local Road
- 4WD
- County or Equivalent
- Driveable
- Not Driveable



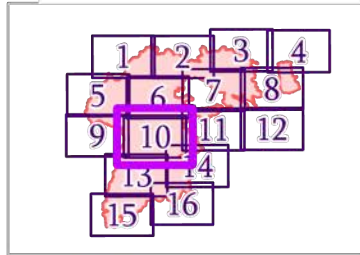
IAP MAP

Summit Trail

WA-COA-200087

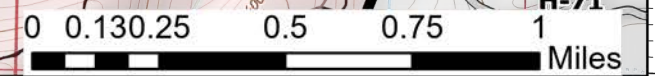
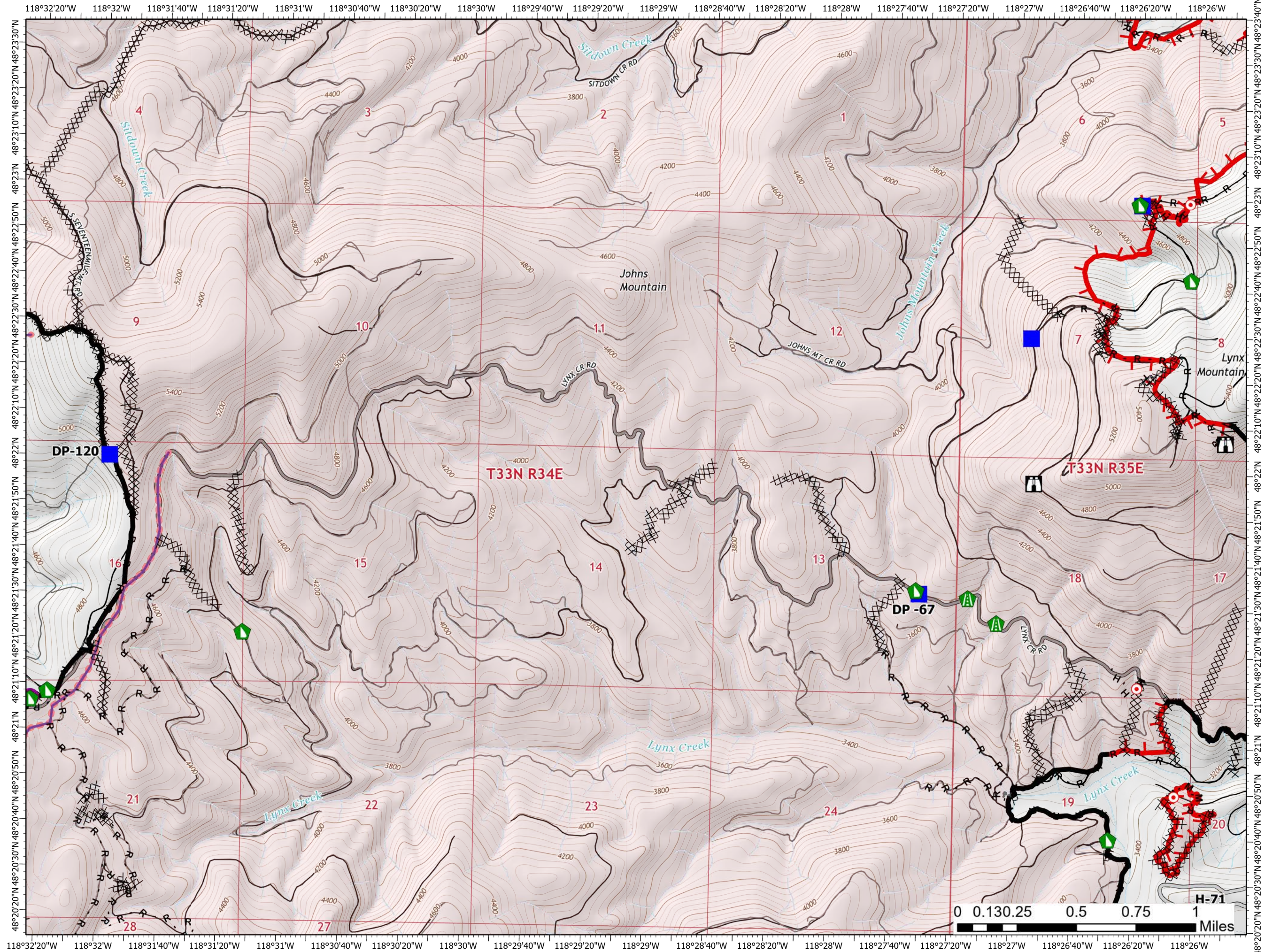
45,553 Acres
on 08/25/2021 at 2045

August 26, 2021



Page 10 of 16

- Helispot
- Drop Point
- Lookout
- Hot Spot - Spot Fire
- Structure Wrap
- Road Repair
- Dozer Push
- Completed Dozer Line
- Completed Fuel Break
- Completed Hand Line
- Completed Mixed Construction Line
- Completed Road as Line
- Planned Secondary Line
- Access or Improved Road
- Other
- Retardant Drop
- Fire Edge
- Contained Line
- Fire Perimeter
- State or Territory
- Main Route - Unimproved
- Local Road
- 4WD
- County or Equivalent
- Driveable
- Not Driveable



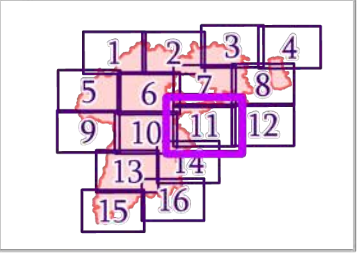
IAP MAP

Summit Trail

WA-COA-200087

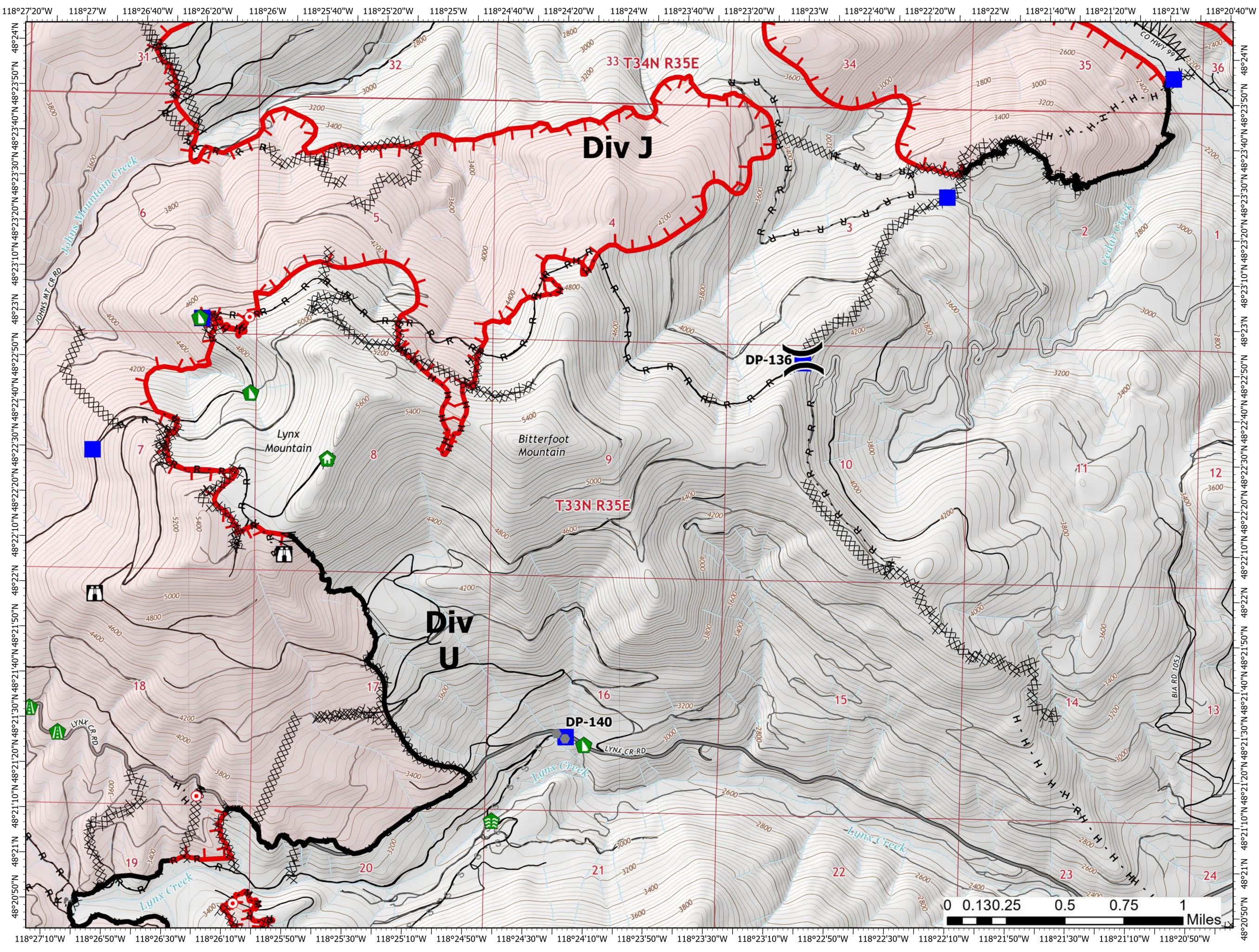
45,553 Acres
on 08/25/2021 at 2045

August 26, 2021



Page 11 of 16

- Division Break
- Drop Point
- Lookout
- Hot Spot - Spot Fire
- Comm Tower
- Structure Wrap
- Stream Crossing
- Road Repair
- Dozer Push
- Completed Dozer Line
- Completed Fuel Break
- Completed Hand Line
- Completed Mixed Construction Line
- Completed Road as Line
- Planned Secondary Line
- Access or Improved Road
- Other
- Fire Edge
- Contained Line
- Fire Perimeter
- State or Territory
- Main Route - Unimproved
- Local Road
- County or Equivalent
- Driveable
- Not Driveable



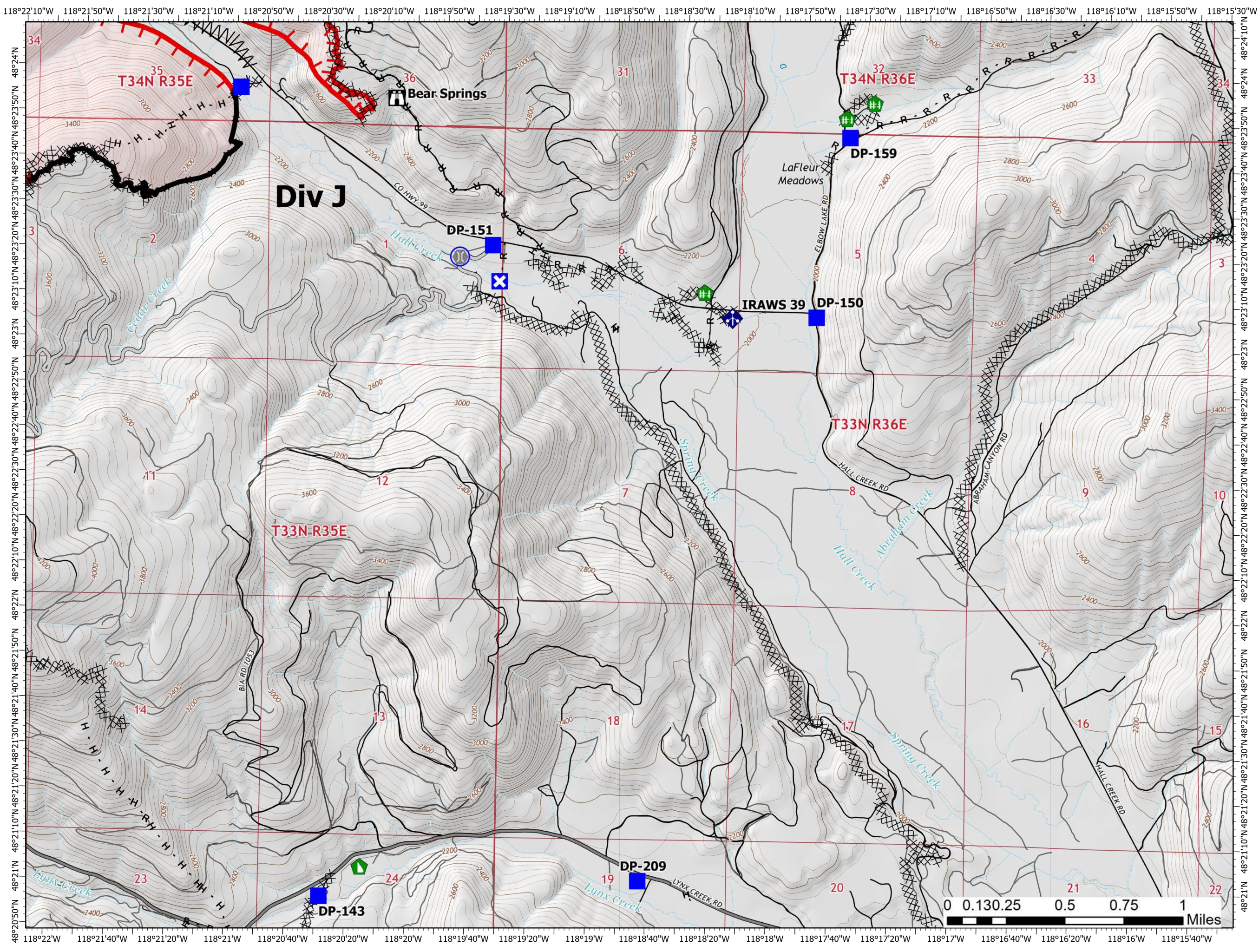
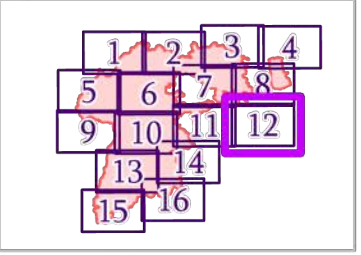
IAP MAP

Summit Trail

WA-COA-200087

45,553 Acres
on 08/25/2021 at 2045

August 26, 2021



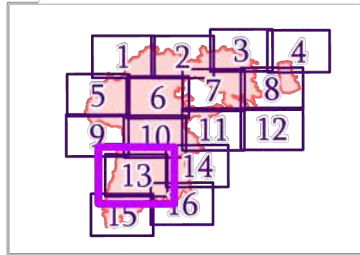
IAP MAP

Summit Trail

WA-COA-200087

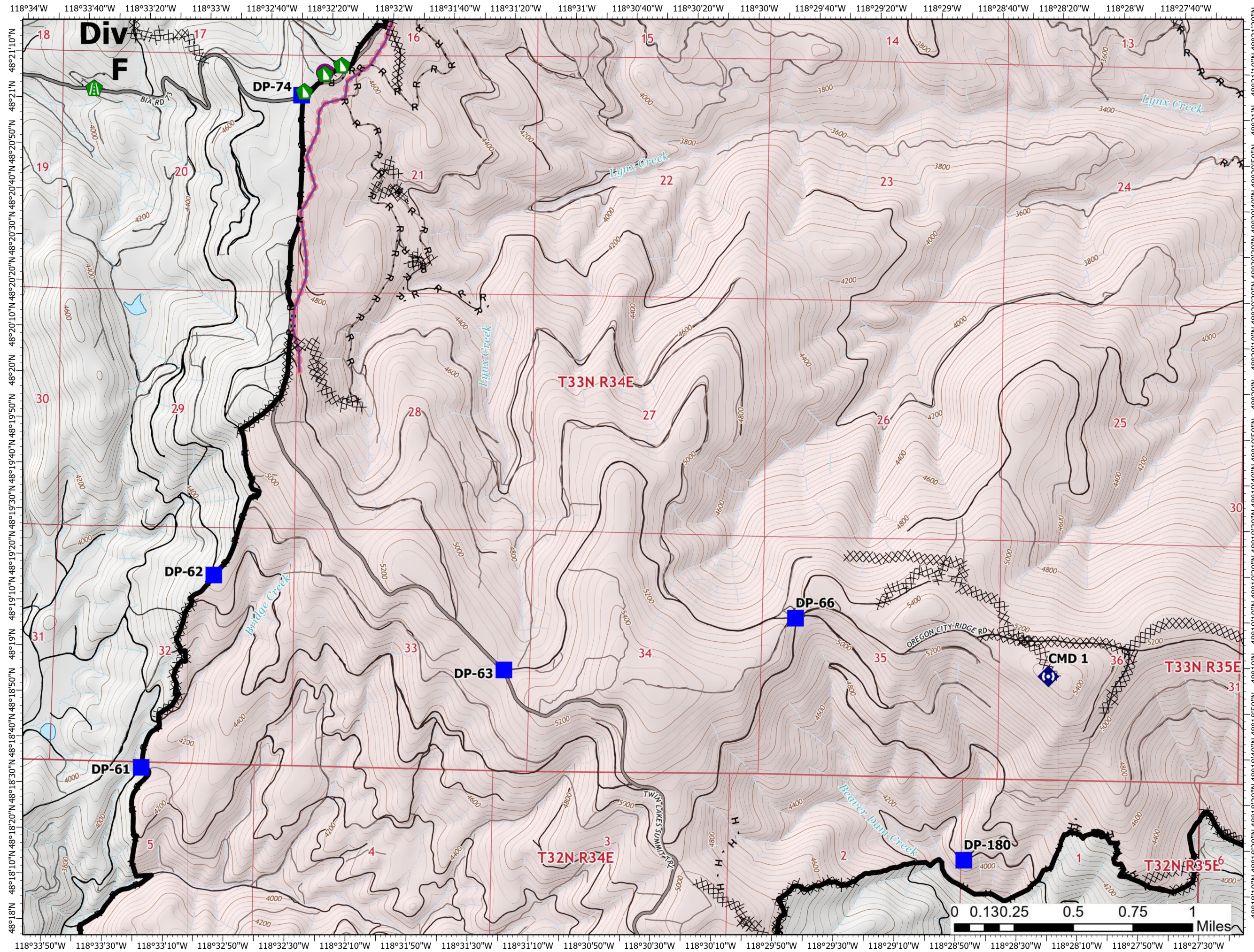
45,553 Acres
on 08/25/2021 at 2045

August 26, 2021



Page 13 of 16

- Helispot
- Drop Point
- ▲ Road Repair
- ▲ Dozer Push
- ◆ Repeater
- ⊗ Completed Dozer Line
- H Completed Hand Line
- R Completed Road as Line
- Retardant Drop
- Contained Line
- Fire Perimeter
- State or Territory
- Main Route - Unimproved
- Local Road
- 4WD
- County or Equivalent
- Driveable
- Not Driveable



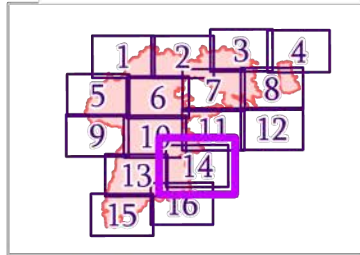
IAP MAP

Summit Trail

WA-COA-200087

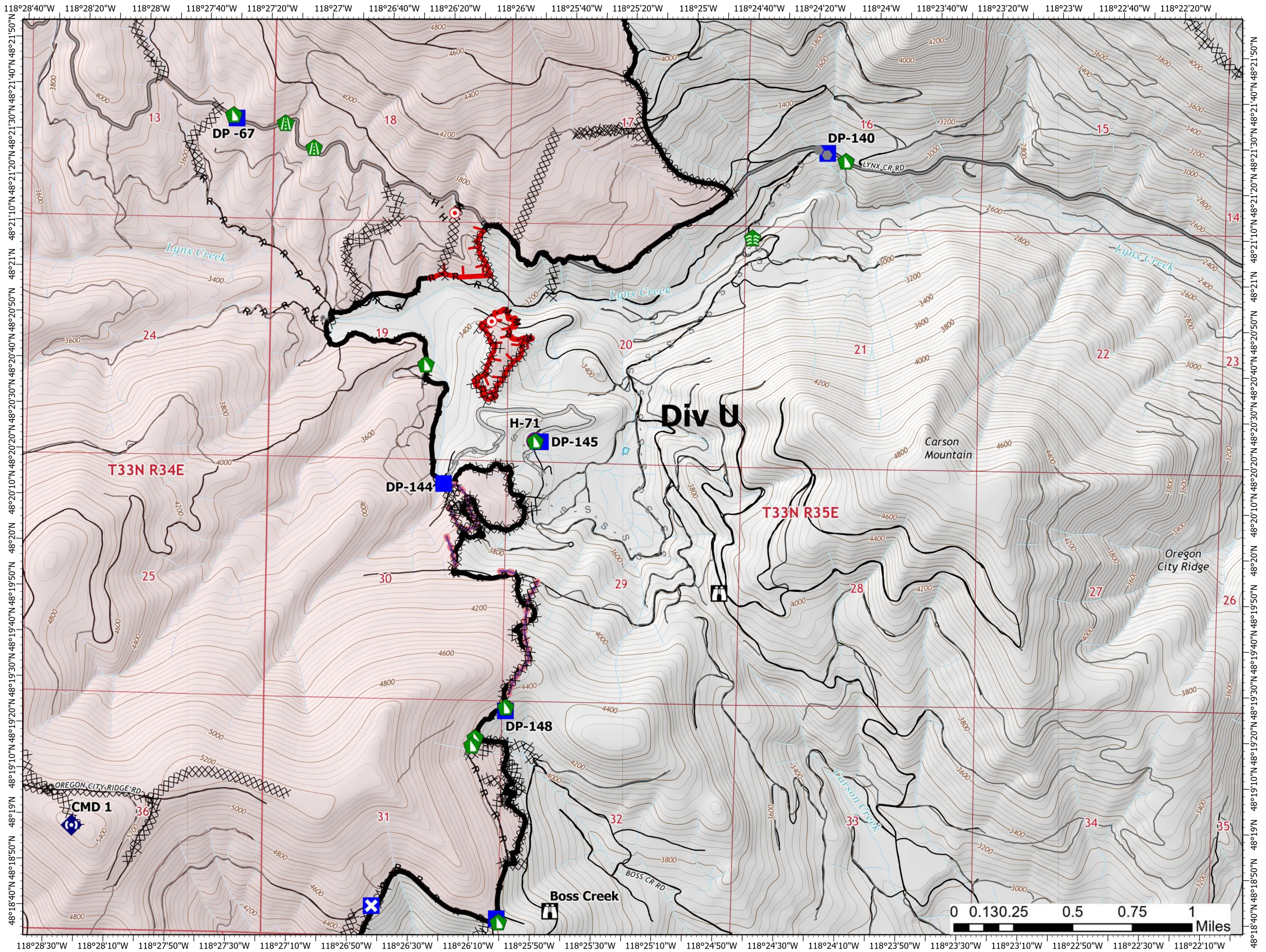
45,553 Acres
on 08/25/2021 at 2045

August 26, 2021



Page 14 of 16

- Helispot
- Drop Point
- ✕ Closure
- ⏏ Lookout
- Hot Spot - Spot Fire
- ⬢ Comm Tower
- 🌿 Stream Crossing
- ⚙️ Road Repair
- 🚧 Dozer Push
- ⬢ Repeater
- ⌘ Completed Dozer Line
- H Completed Hand Line
- M Completed Mixed Construction Line
- R Completed Road as Line
- S Planned Secondary Line
- Access or Improved Road
- - - Other
- 🔴 Retardant Drop
- └─┘ Fire Edge
- ▬ Contained Line
- ▭ Fire Perimeter
- State or Territory
- Main Route - Unimproved
- Local Road
- County or Equivalent
- Driveable



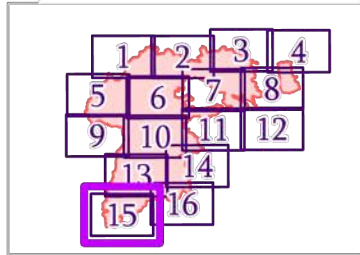
IAP MAP

Summit Trail

WA-COA-200087

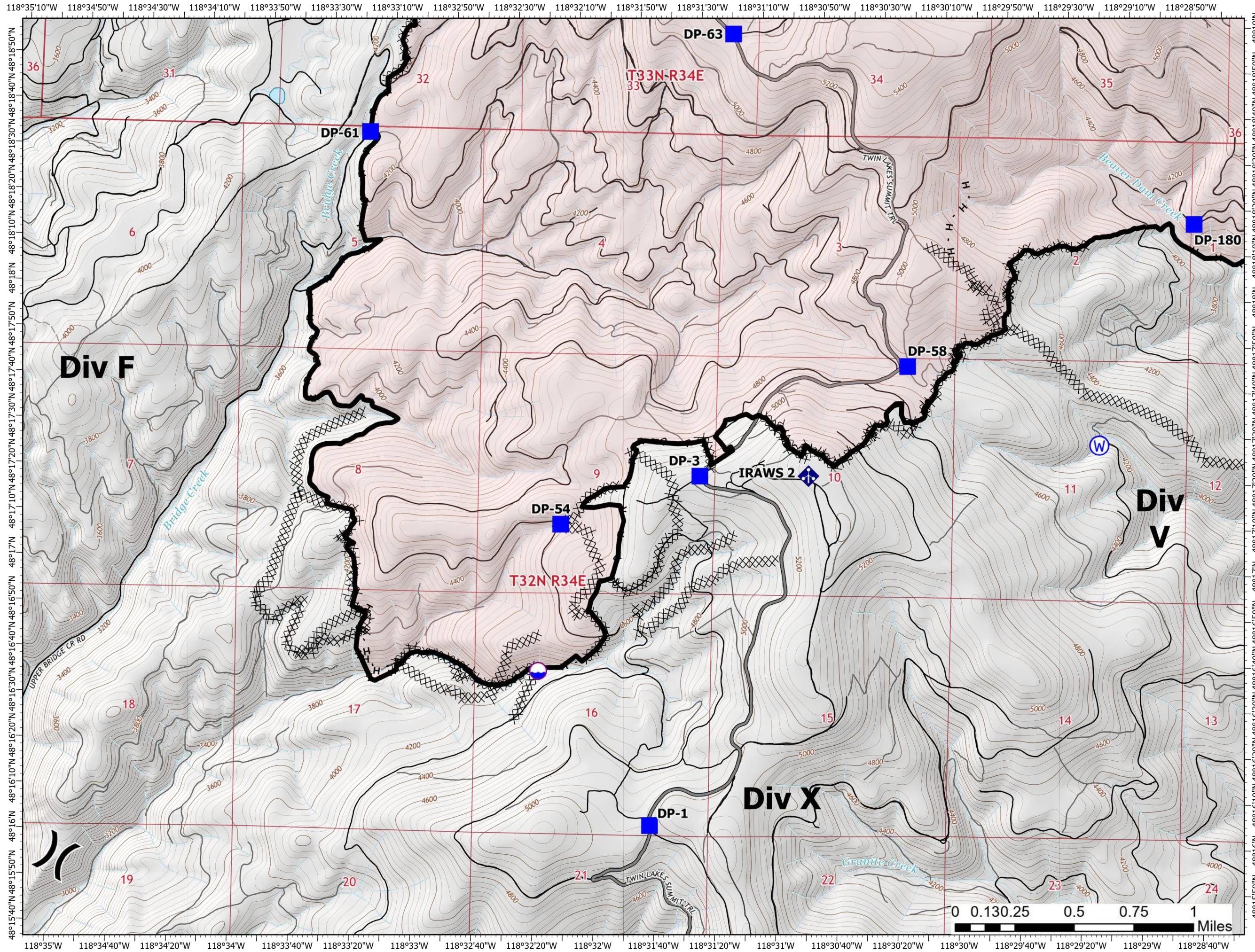
45,553 Acres
on 08/25/2021 at 2045

August 26, 2021



Page 15 of 16

- Dip Site
- Division Break
- Drop Point
- Mobile Weather Unit
- Water Source
- Completed Dozer Line
- Completed Hand Line
- Completed Road as Line
- Contained Line
- Fire Perimeter
- State or Territory
- Main Route - Unimproved
- Local Road
- 4WD
- County or Equivalent
- Driveable
- Not Driveable



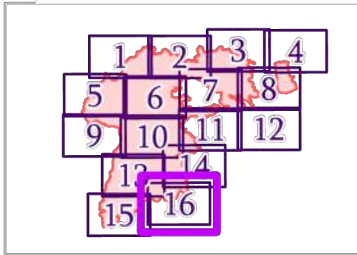
IAP MAP

Summit Trail

WA-COA-200087

45,553 Acres
on 08/25/2021 at 2045

August 26, 2021



Page 16 of 16

- Drop Point
- ✕ Closure
- H Lookout
- Hot Spot - Spot Fire
- Water Development or Draft Site
- ▲ Dozer Push
- ◆ Repeater
- W Water Source
- ⊗ Completed Dozer Line
- H Completed Hand Line
- R Completed Road as Line
- Retardant Drop
- Contained Line
- Fire Perimeter
- State or Territory
- Main Route - Improved
- Local Road
- County or Equivalent
- Driveable
- Not Driveable

