

IAP MAP

Summit Trail

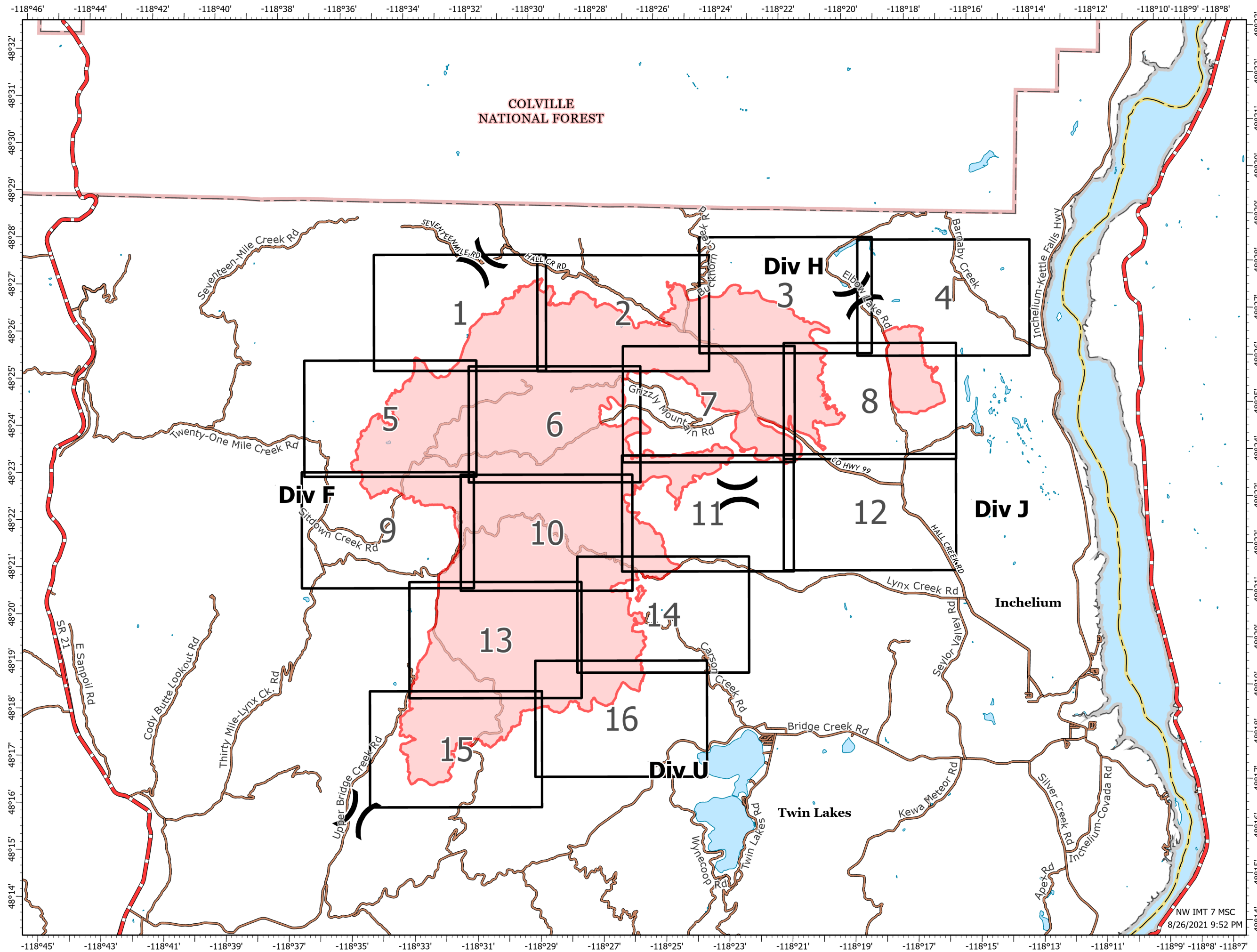
WA-COA-200087

45,633 Acres
on 08/26/2021 at 2130

August 27, 2021



- (X) Division Break
- Fire Perimeter
- Additional Rd Selections
- Comprehensive Roads Hosted
- Owner
 - BIA
 - City
 - County
 - Other Drive-able
 - Other Not Drive-able
 - Private
 - State
 - Tribe
 - Highway



1:140,000
NAD 1983
UTM 11N

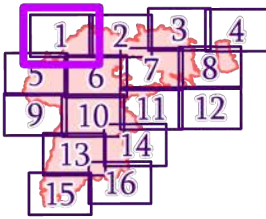
IAP MAP

Summit Trail

WA-COA-200087

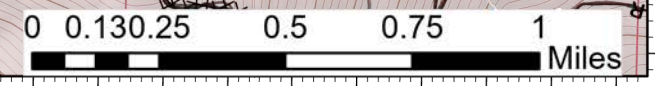
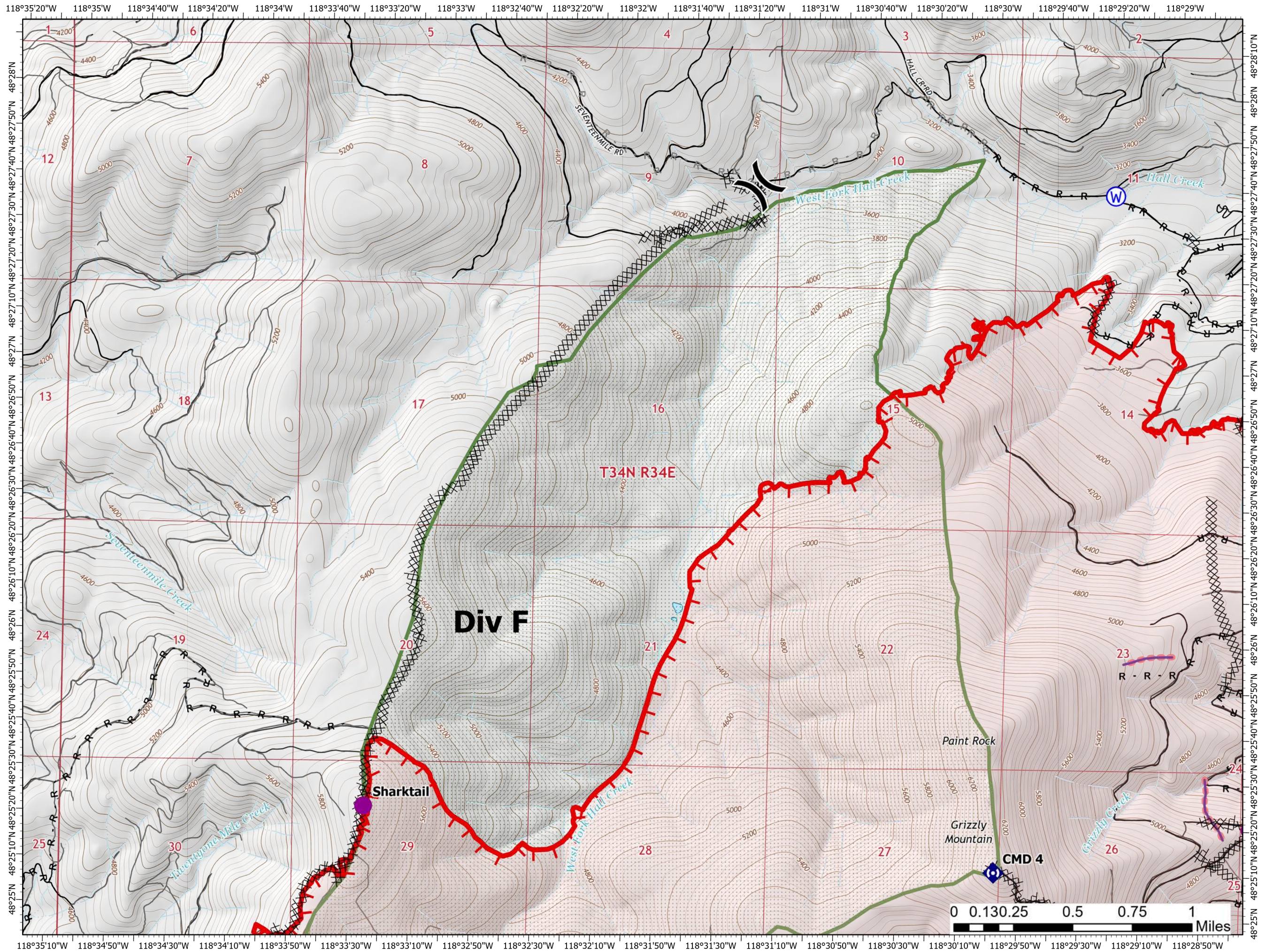
45,633 Acres
on 08/26/2021 at 2130

August 27, 2021



Page 1 of 16

- Helispot
- Division Break
- Drop Point
- Repeater
- Water Source
- Completed Dozer Line
- Completed Road as Line
- Planned Road as Line
- Retardant Drop
- Fire Edge
- Contained Line
- Fire Perimeter
- State or Territory
- Local Road
- County or Equivalent
- Wilderness Area
- Driveable
- Not Driveable



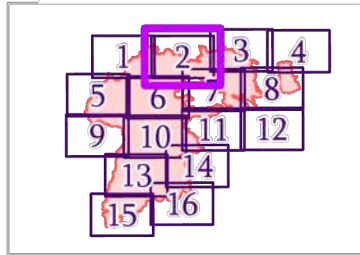
IAP MAP

Summit Trail

WA-COA-200087

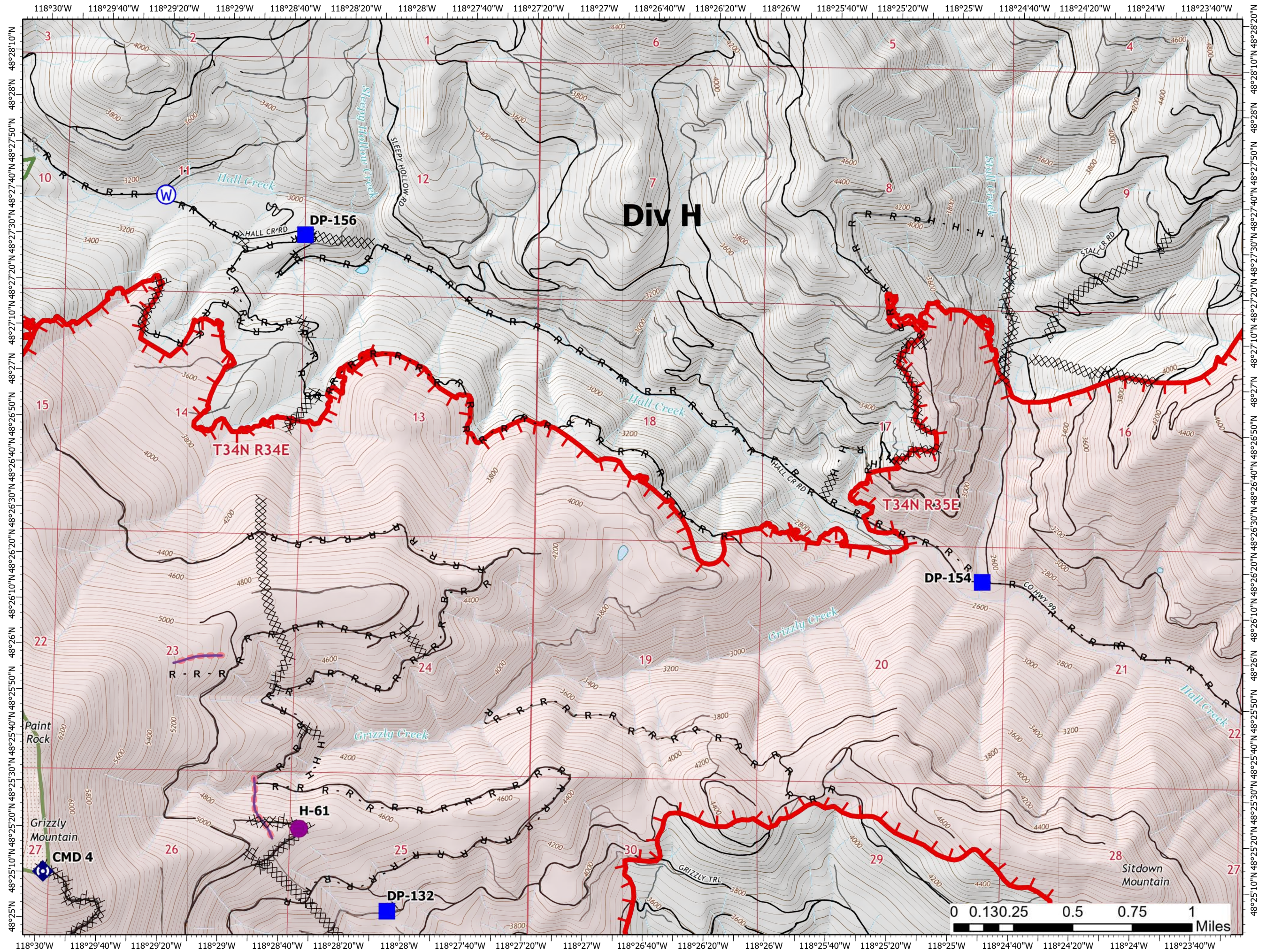
45,633 Acres
on 08/26/2021 at 2130

August 27, 2021



Page 2 of 16

- Helispot
- Drop Point
- ◆ Repeater
- ⊙ Water Source
- ⊗ Completed Dozer Line
- H Completed Hand Line
- R Completed Road as Line
- R Planned Road as Line
- ⊖ Retardant Drop
- ┃ Fire Edge
- ▭ Fire Perimeter
- ▭ State or Territory
- Local Road
- 4WD
- ▭ County or Equivalent
- ▭ Wilderness Area
- Driveable
- Not Driveable



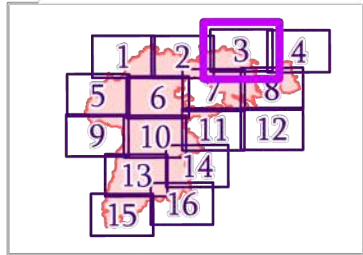
IAP MAP

Summit Trail

WA-COA-200087

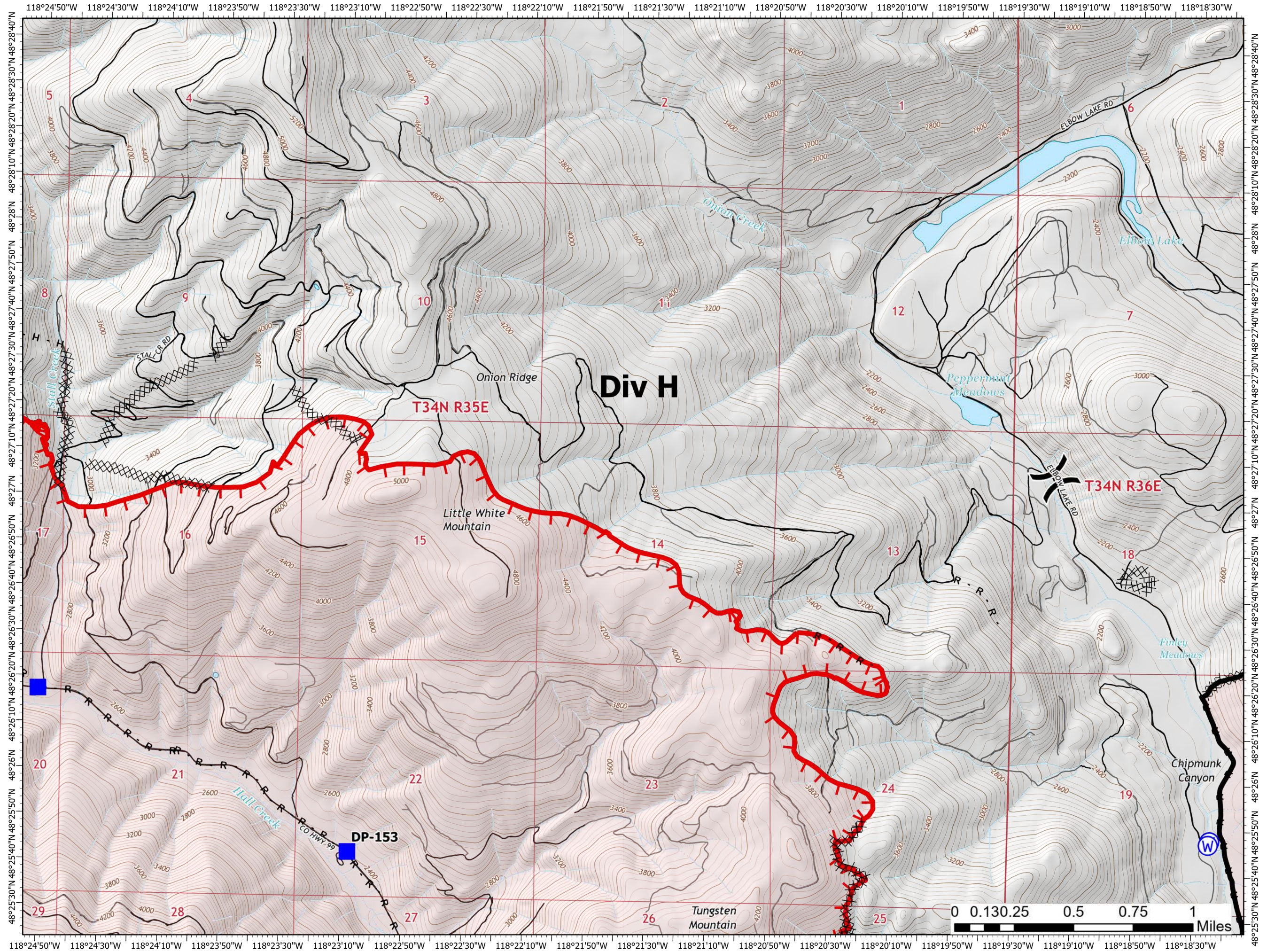
45,633 Acres
on 08/26/2021 at 2130

August 27, 2021



Page 3 of 16

- Division Break
- Drop Point
- Landing or Log Deck
- Water Source
- Completed Dozer Line
- Completed Hand Line
- Completed Road as Line
- Fire Edge
- Contained Line
- Fire Perimeter
- State or Territory
- Local Road
- 4WD
- County or Equivalent
- Driveable
- Not Driveable



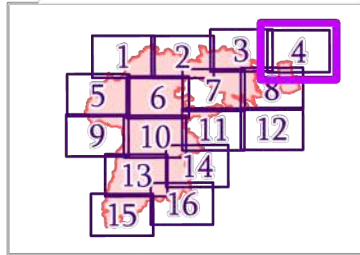
IAP MAP

Summit Trail

WA-COA-200087

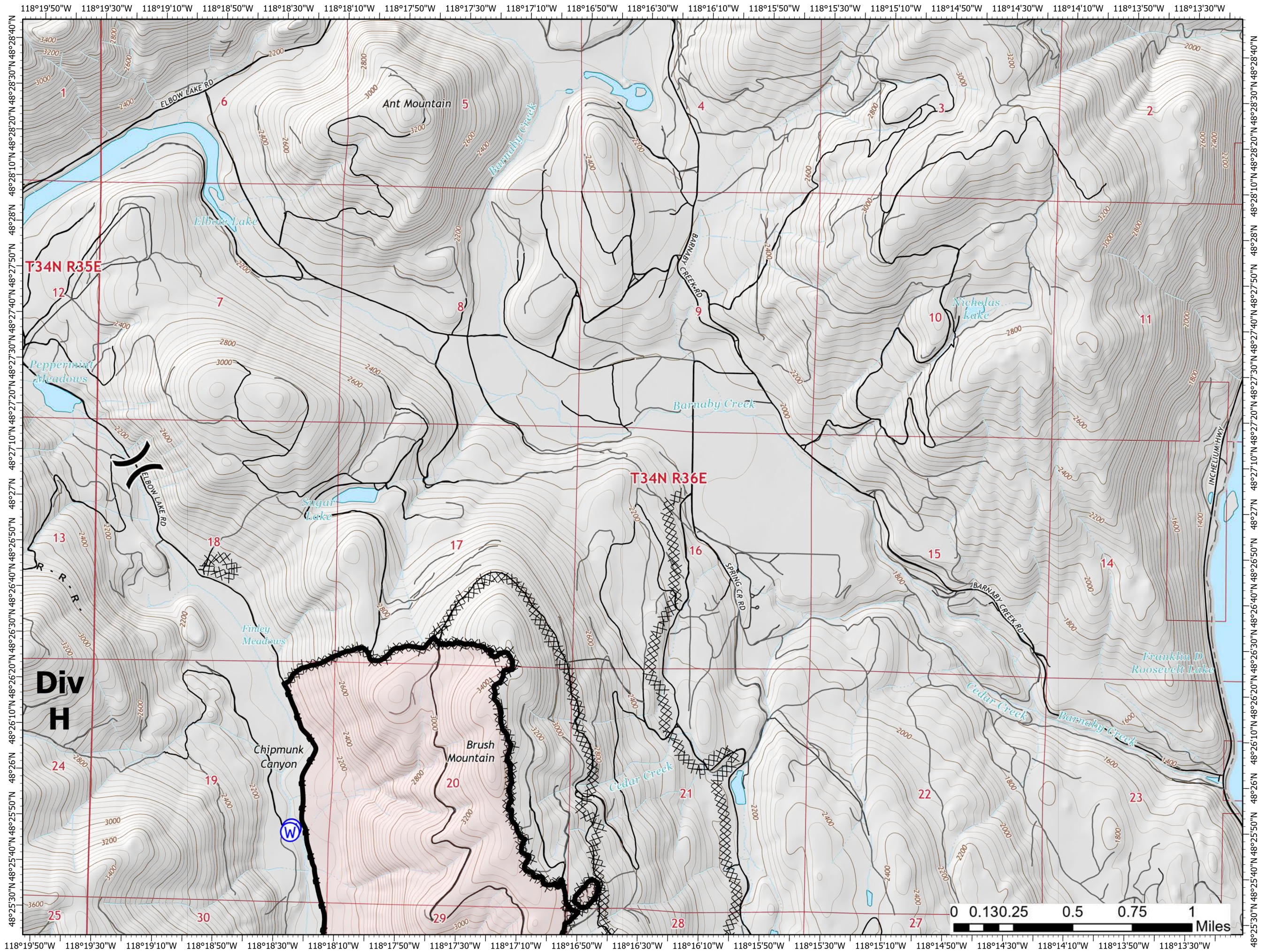
45,633 Acres
on 08/26/2021 at 2130

August 27, 2021



Page 4 of 16

- Division Break
- Drop Point
- Water Source
- Completed Dozer Line
- Completed Road as Line
- Contained Line
- Fire Perimeter
- State or Territory
- Local Road
- County or Equivalent
- Driveable
- Not Driveable



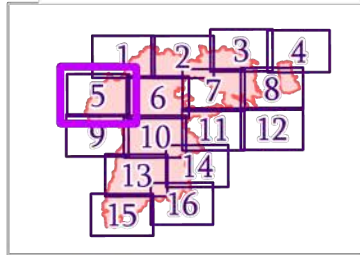
IAP MAP

Summit Trail

WA-COA-200087

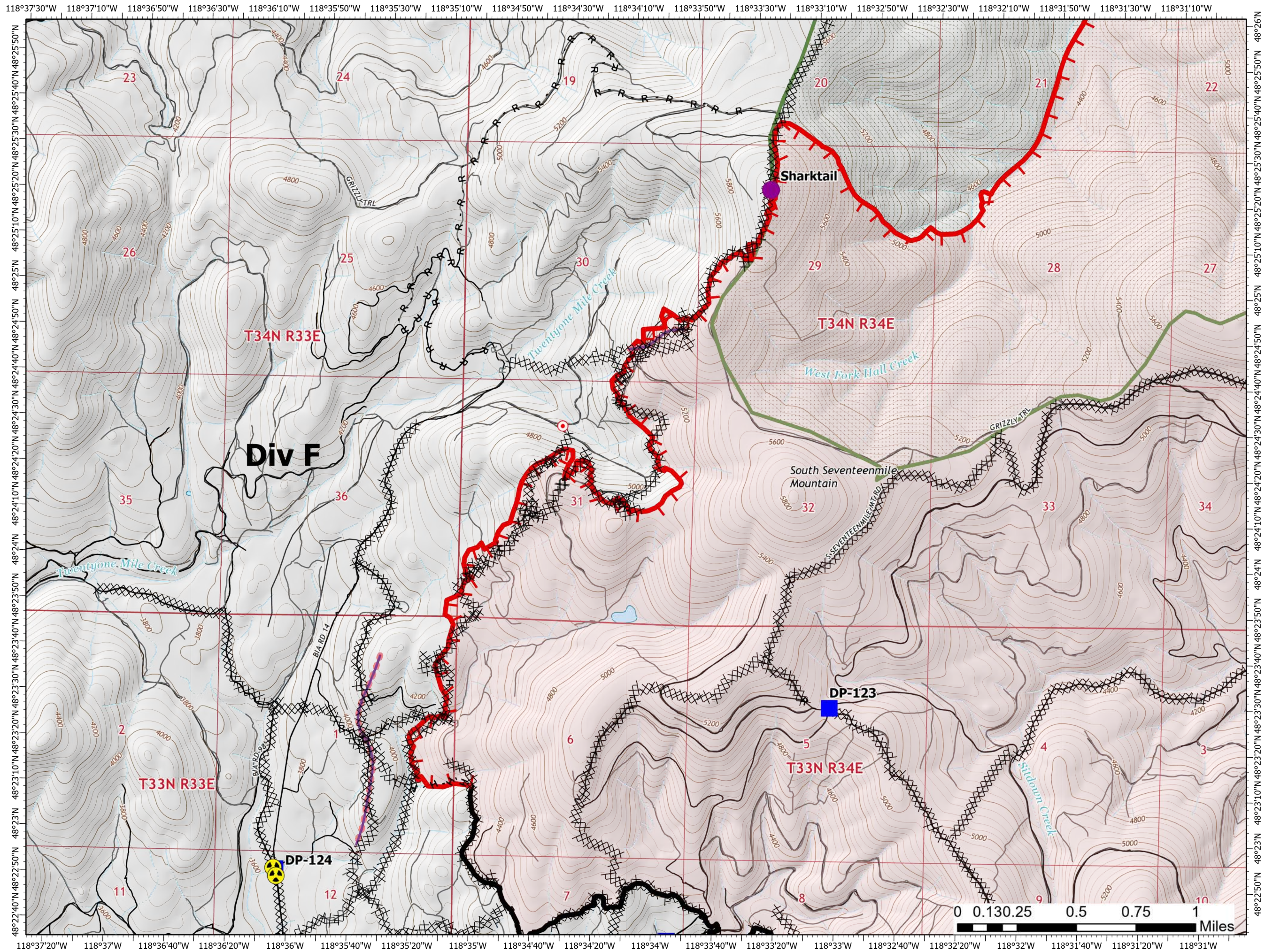
45,633 Acres
on 08/26/2021 at 2130

August 27, 2021



Page 5 of 16

- Helispot
- Drop Point
- Hot Spot - Spot Fire
- ☠ Hazard
- ⊗ Completed Dozer Line
- H Completed Hand Line
- R Completed Road as Line
- R Planned Road as Line
- Retardant Drop
- ┌ Fire Edge
- Contained Line
- Fire Perimeter
- State or Territory
- Local Road
- County or Equivalent
- Wilderness Area
- Driveable
- Not Driveable

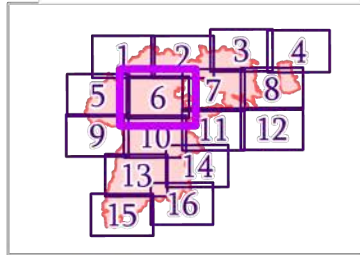


IAP MAP Summit Trail

WA-COA-200087

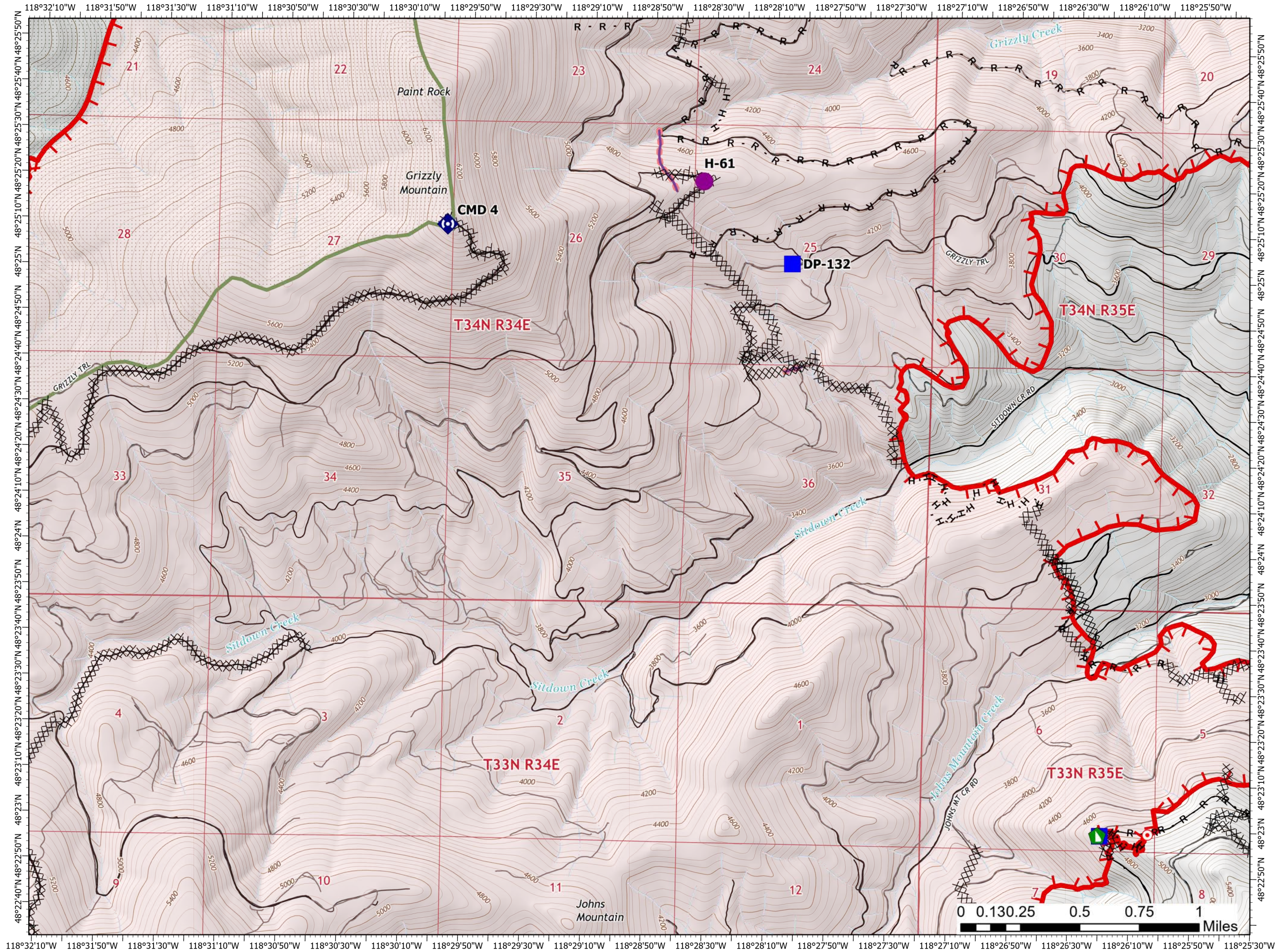
45,633 Acres
on 08/26/2021 at 2130

August 27, 2021



Page 6 of 16

- Helispot
- Drop Point
- Hot Spot - Spot Fire
- ▶ Dozer Push
- ◆ Repeater
- ⊗ Completed Dozer Line
- H Completed Hand Line
- R Completed Road as Line
- Retardant Drop
- Fire Edge
- Fire Perimeter
- State or Territory
- Local Road
- ▭ County or Equivalent
- Wilderness Area
- Driveable
- Not Driveable



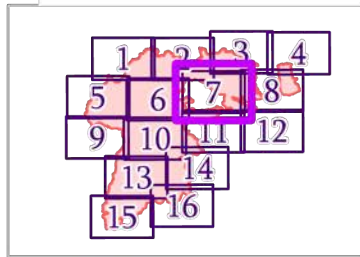
IAP MAP

Summit Trail

WA-COA-200087

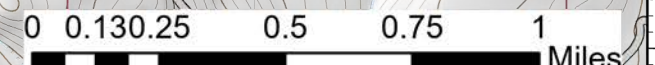
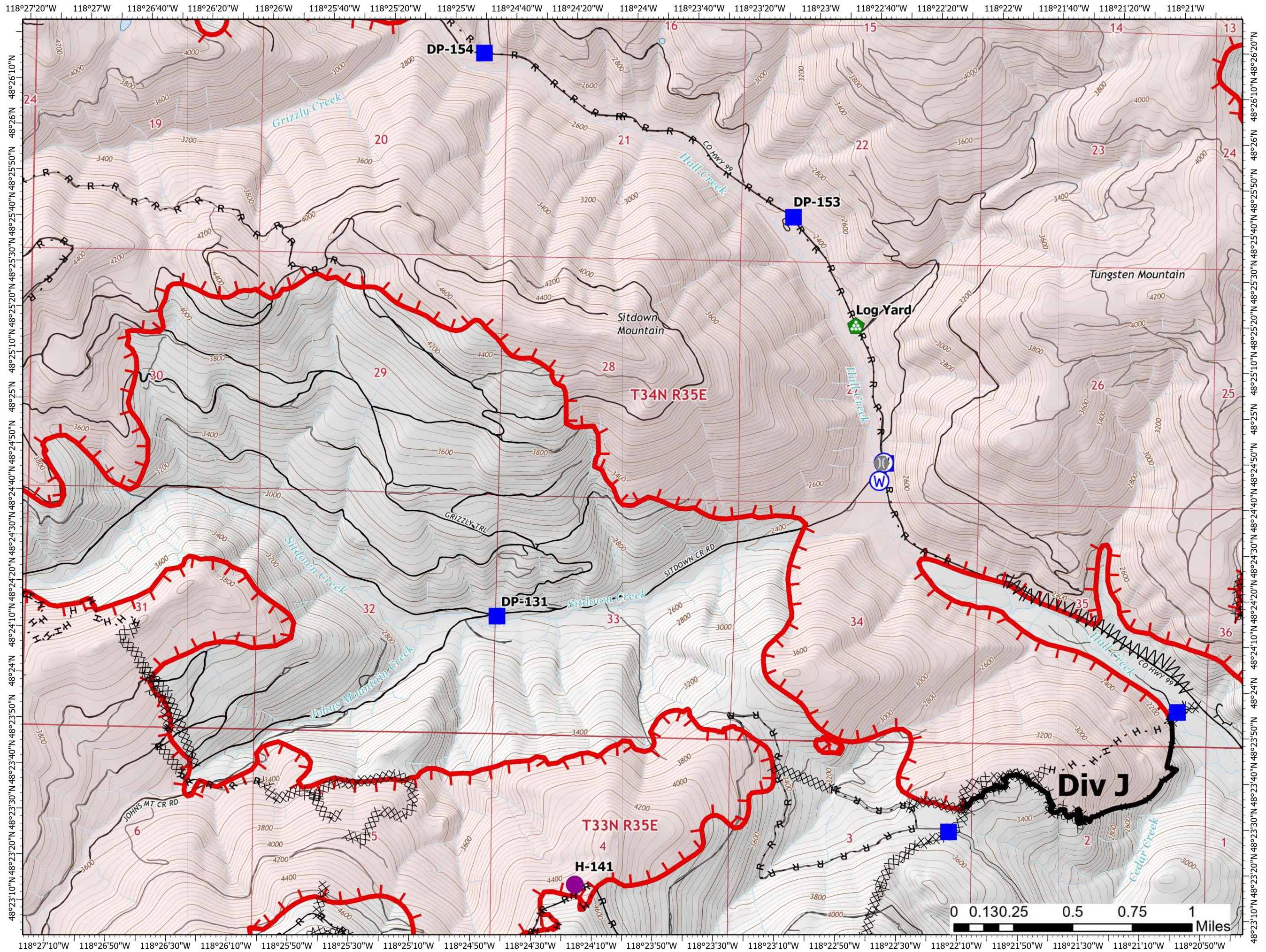
45,633 Acres
on 08/26/2021 at 2130

August 27, 2021



Page 7 of 16

- Helispot
- Drop Point
- Hot Spot - Spot Fire
- Bridge
- Landing or Log Deck
- Dozer Push
- Water Source
- Completed Dozer Line
- Completed Fuel Break
- Completed Hand Line
- Completed Road as Line
- Access or Improved Road
- Fire Edge
- Contained Line
- Fire Perimeter
- State or Territory
- Local Road
- County or Equivalent
- Driveable
- Not Driveable



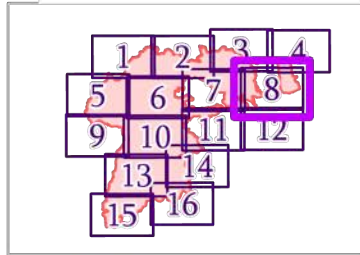
IAP MAP

Summit Trail

WA-COA-200087

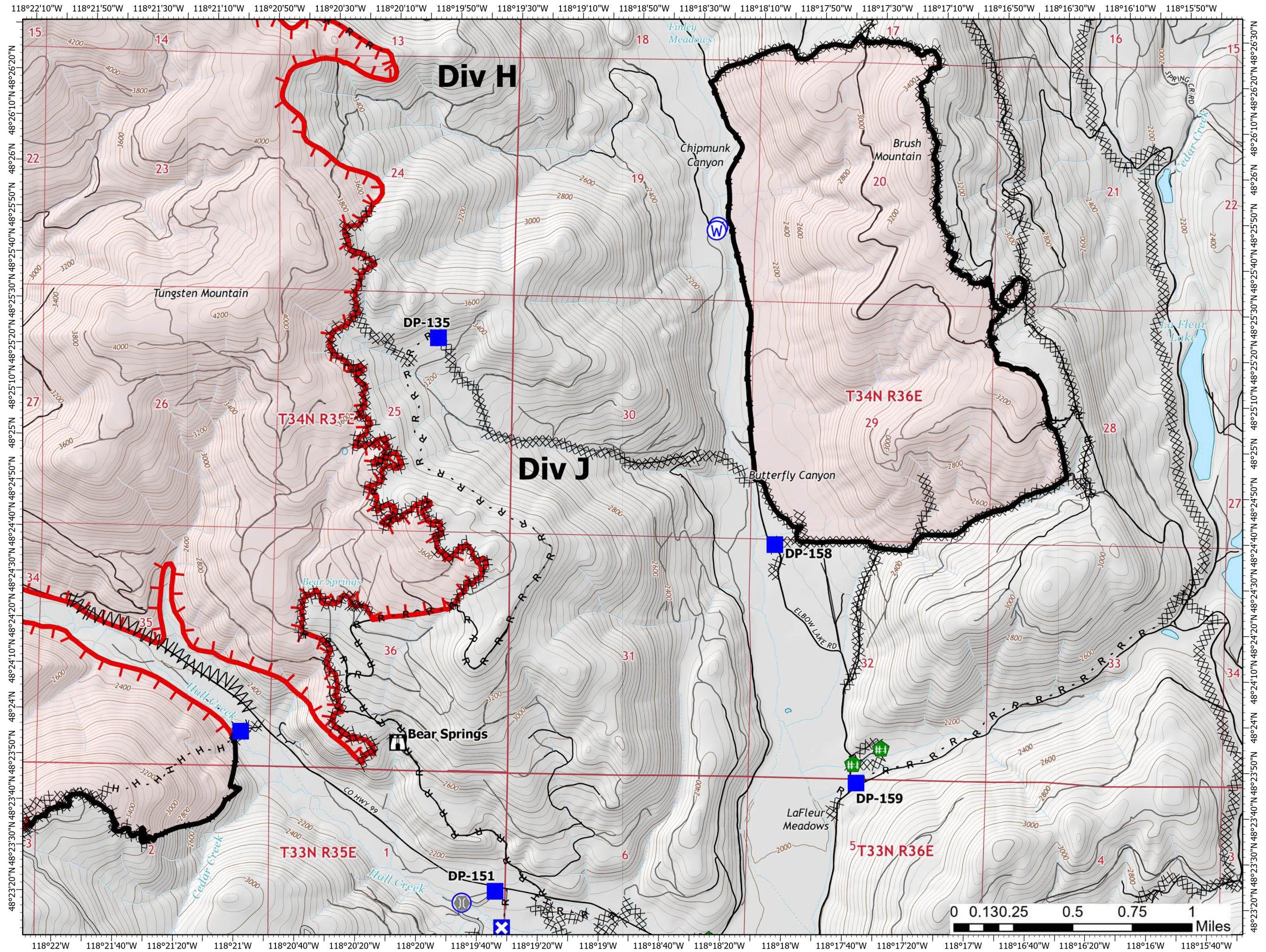
45,633 Acres
on 08/26/2021 at 2130

August 27, 2021



Page 8 of 16

- Drop Point
- ✕ Closure
- 🏠 Lookout
- 🌉 Bridge
- 🌿 Fence - Cut/Damaged
- Ⓜ Water Source
- ✂ Completed Dozer Line
- ⚡ Completed Fuel Break
- H Completed Hand Line
- R Completed Road as Line
- Access or Improved Road
- ▬ Fire Edge
- ▬ Contained Line
- ▬ Fire Perimeter
- State or Territory
- Local Road
- - - 4WD
- County or Equivalent
- Driveable
- Not Driveable



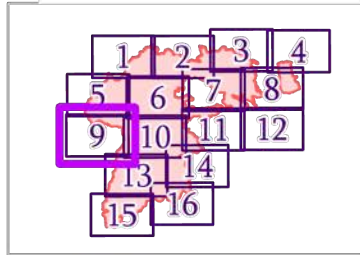
IAP MAP

Summit Trail

WA-COA-200087

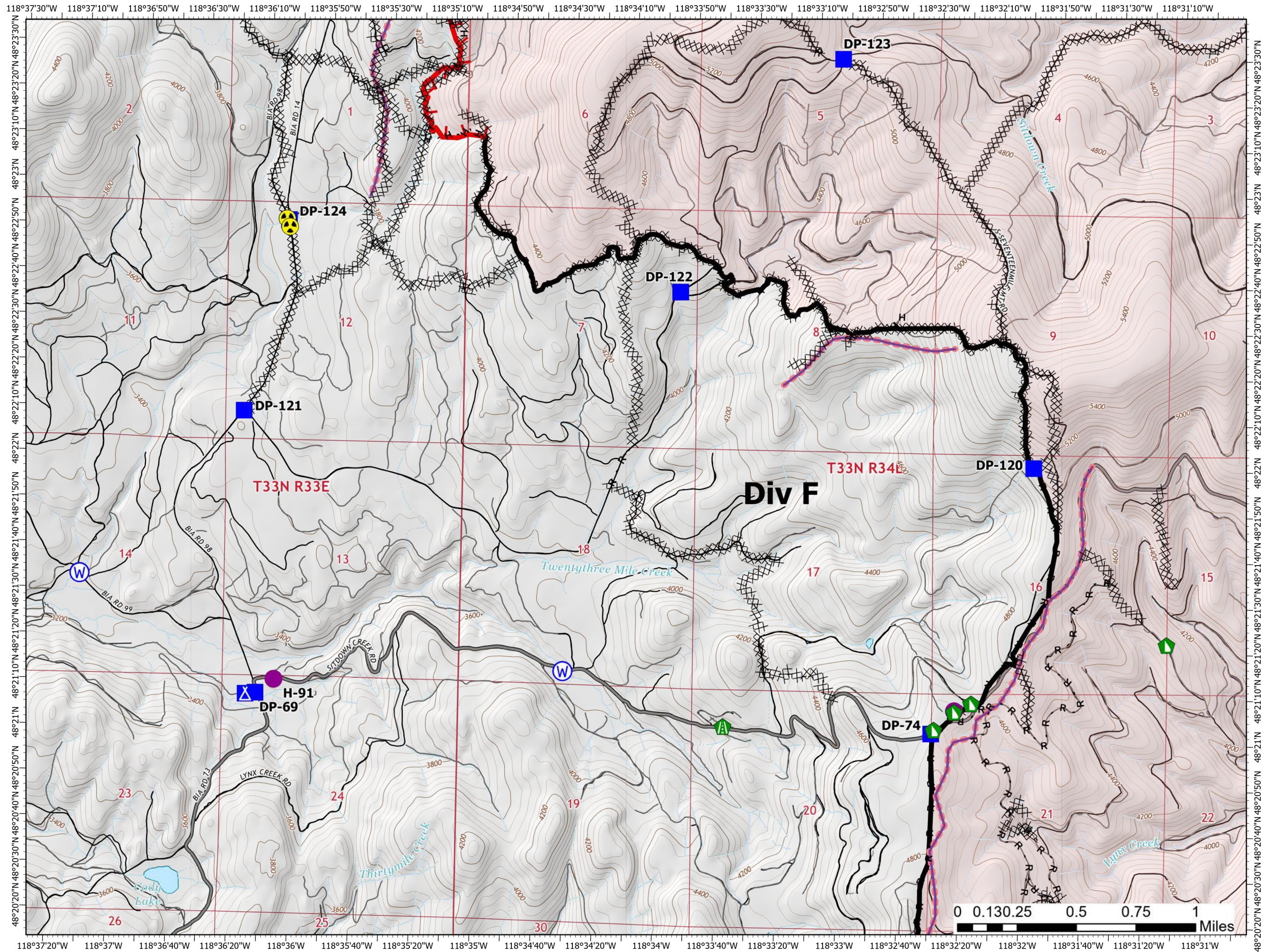
45,633 Acres
on 08/26/2021 at 2130

August 27, 2021



Page 9 of 16

- Helispot
- Drop Point
- ▲ Camp
- ▲ Road Repair
- ▲ Dozer Push
- ☠ Hazard
- ⊙ Water Source
- ⊗ Completed Dozer Line
- H Completed Hand Line
- R Completed Road as Line
- Retardant Drop
- ▬ Fire Edge
- ▬ Contained Line
- ▬ Fire Perimeter
- State or Territory
- ▬ Main Route - Unimproved
- ▬ Local Road
- ▬ 4WD
- County or Equivalent
- ▬ Driveable
- ▬ Not Driveable



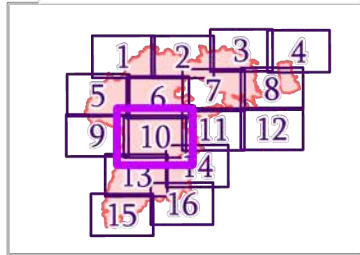
IAP MAP

Summit Trail

WA-COA-200087

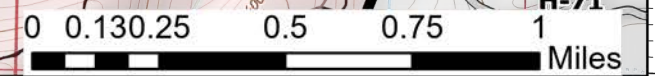
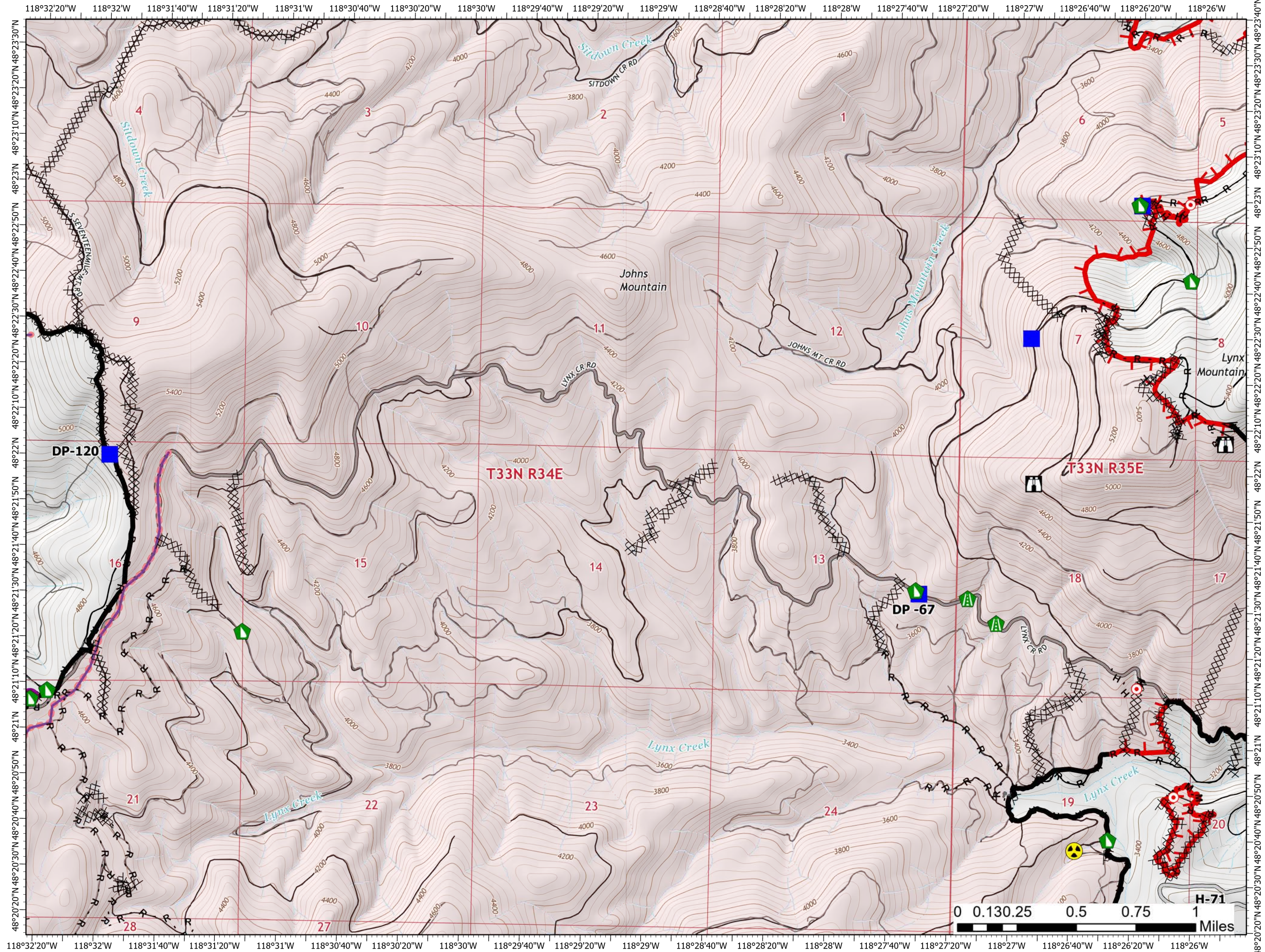
45,633 Acres
on 08/26/2021 at 2130

August 27, 2021



Page 10 of 16

- Helispot
- Drop Point
- Lookout
- Hot Spot - Spot Fire
- Structure Wrap
- Road Repair
- Dozer Push
- Hazard
- Completed Dozer Line
- Completed Fuel Break
- Completed Hand Line
- Completed Mixed Construction Line
- Completed Road as Line
- Planned Secondary Line
- Access or Improved Road
- Other
- Retardant Drop
- Fire Edge
- Contained Line
- Fire Perimeter
- State or Territory
- Main Route - Unimproved
- Local Road
- 4WD
- County or Equivalent
- Driveable



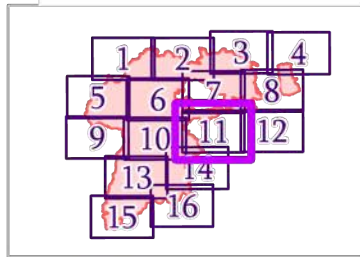
IAP MAP

Summit Trail

WA-COA-200087

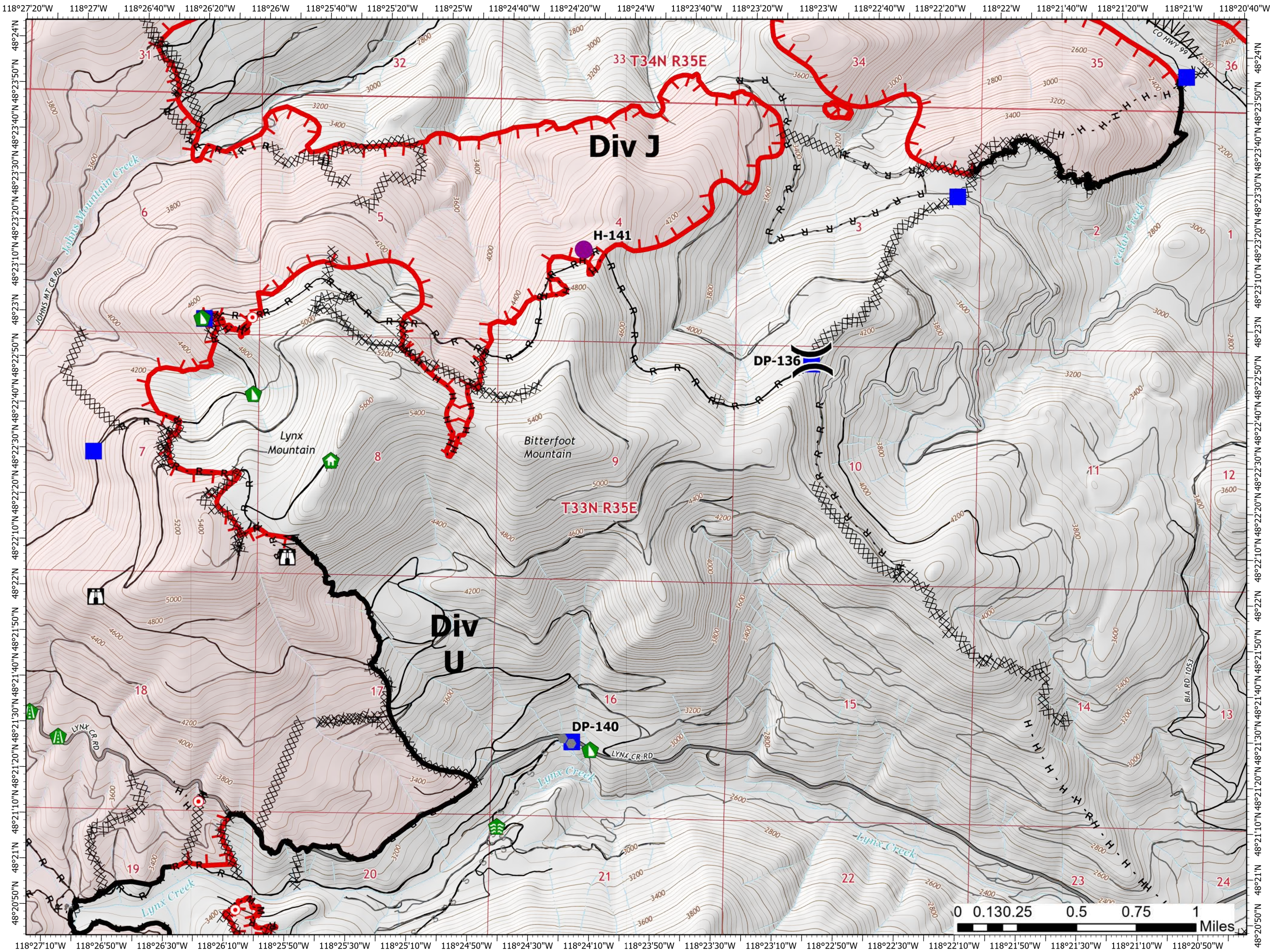
45,633 Acres
on 08/26/2021 at 2130

August 27, 2021



Page 11 of 16

- Helispot
-) Division Break
- Drop Point
- Lookout
- Hot Spot - Spot Fire
- Comm Tower
- Structure Wrap
- Stream Crossing
- Road Repair
- Dozer Push
- X Completed Dozer Line
- ^ Completed Fuel Break
- H Completed Hand Line
- M Completed Mixed Construction Line
- R Completed Road as Line
- S Planned Secondary Line
- Access or Improved Road
- - - Other
- ┌ Fire Edge
- Contained Line
- Fire Perimeter
- State or Territory
- Main Route - Unimproved
- Local Road
- County or Equivalent
- Driveable



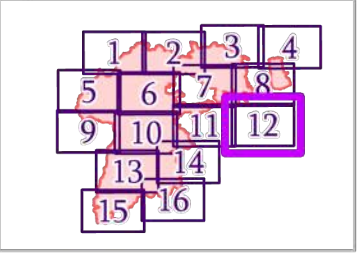
IAP MAP

Summit Trail

WA-COA-200087

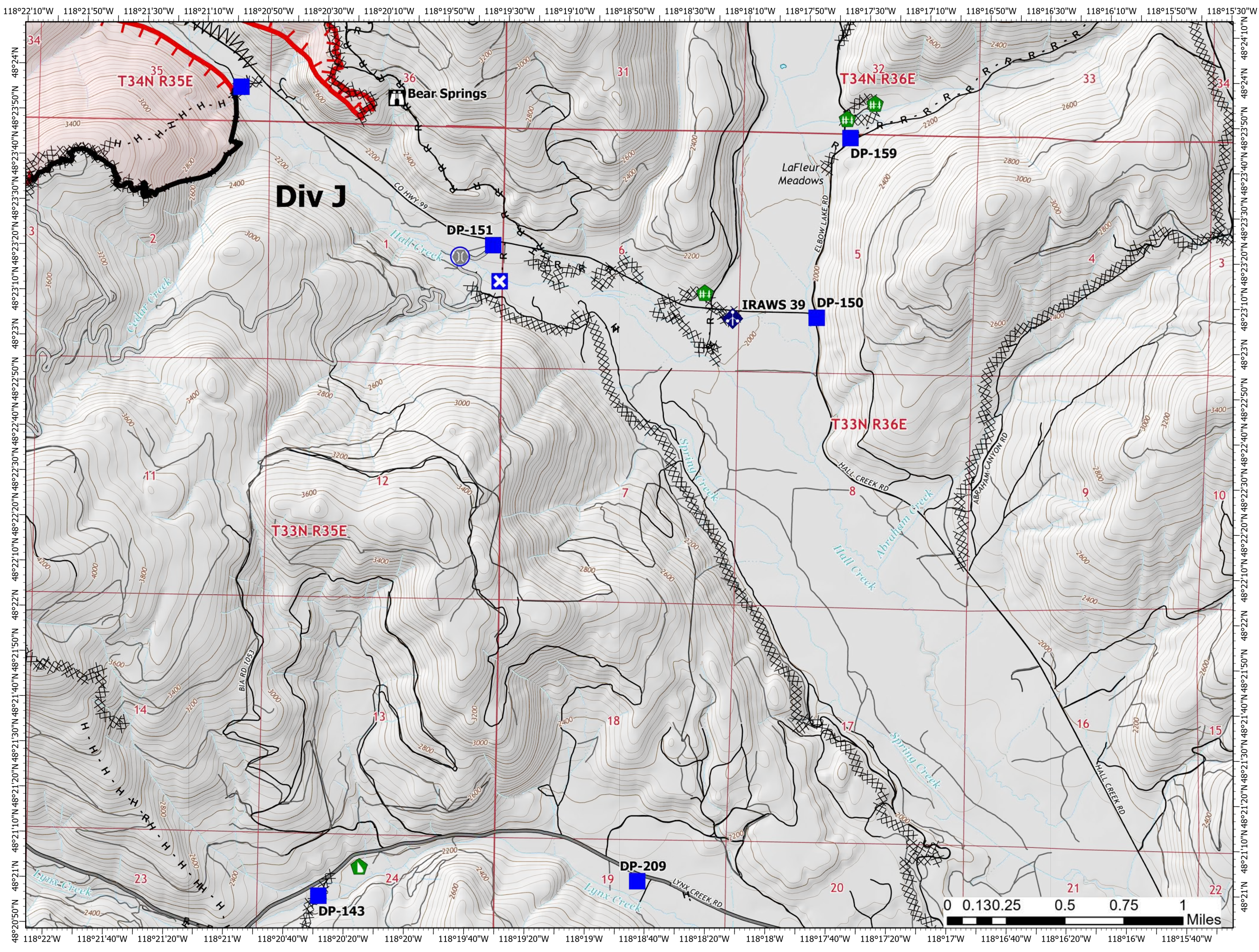
45,633 Acres
on 08/26/2021 at 2130

August 27, 2021



Drop Point Closure Lookout Bridge Fence - Cut/Damaged Dozer Push Mobile Weather Unit Water Source Completed Dozer Line Completed Fuel Break Completed Hand Line Completed Road as Line Access or Improved Road Fire Edge Contained Line Fire Perimeter State or Territory Main Route - Unimproved Local Road 4WD County or Equivalent Driveable Not Driveable

Page 12 of 16



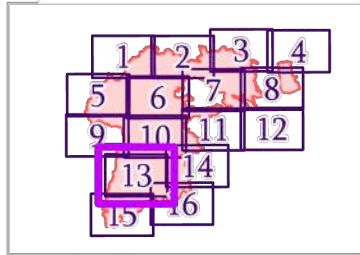
IAP MAP

Summit Trail

WA-COA-200087

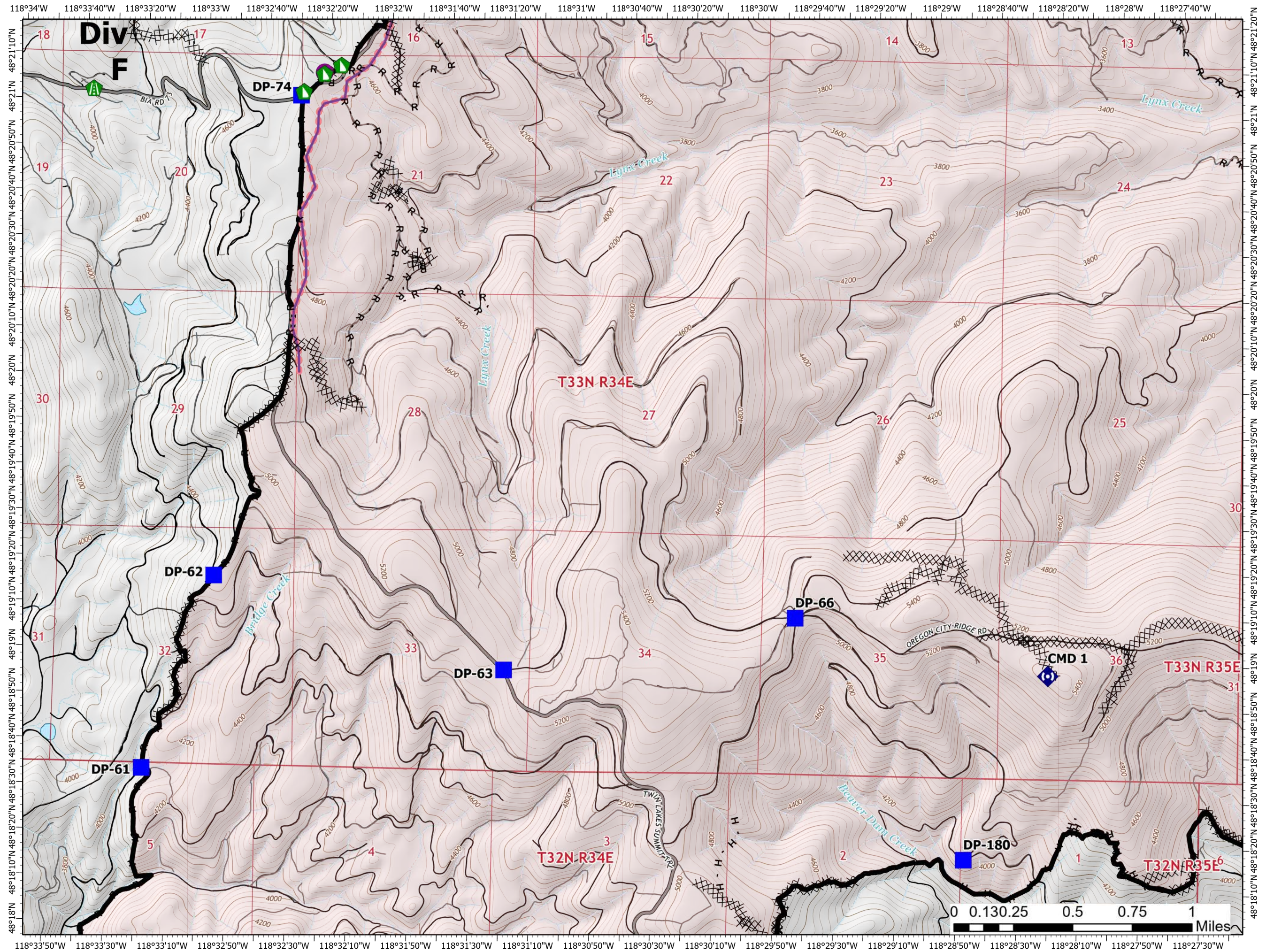
45,633 Acres
on 08/26/2021 at 2130

August 27, 2021



Page 13 of 16

- Helispot
- Drop Point
- ▲ Road Repair
- ▲ Dozer Push
- ◆ Repeater
- ⊗ Completed Dozer Line
- H Completed Hand Line
- R Completed Road as Line
- Retardant Drop
- Contained Line
- Fire Perimeter
- State or Territory
- Main Route - Unimproved
- Local Road
- 4WD
- County or Equivalent
- Driveable
- Not Driveable



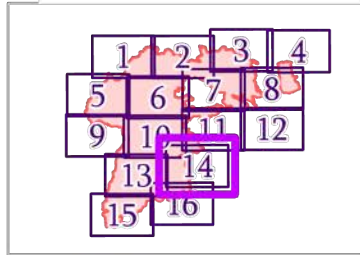
IAP MAP

Summit Trail

WA-COA-200087

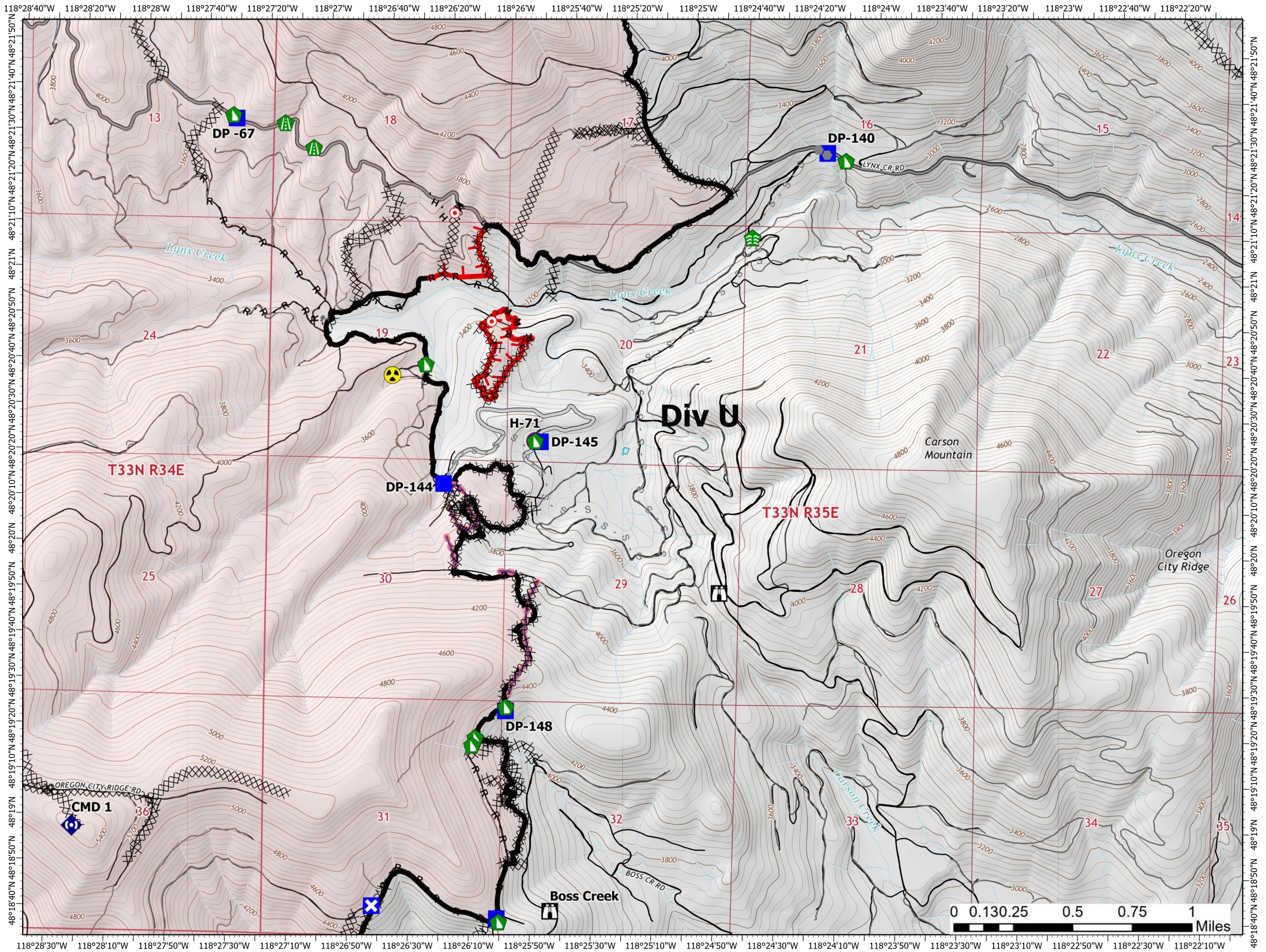
45,633 Acres
on 08/26/2021 at 2130

August 27, 2021



Page 14 of 16

- Helispot
- Drop Point
- ✕ Closure
- Lookout
- Hot Spot - Spot Fire
- Comm Tower
- Stream Crossing
- ▲ Road Repair
- ▲ Dozer Push
- ◆ Repeater
- ☠ Hazard
- ✕ Completed Dozer Line
- H Completed Hand Line
- M Completed Mixed Construction Line
- R Completed Road as Line
- S Planned Secondary Line
- Access or Improved Road
- Other
- Retardant Drop
- Fire Edge
- Contained Line
- Fire Perimeter
- State or Territory
- Main Route - Unimproved
- Local Road
- County or Equivalent



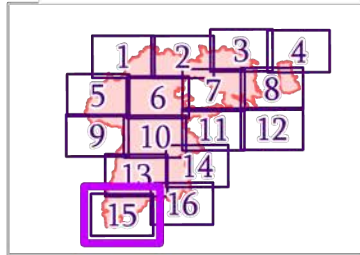
IAP MAP

Summit Trail

WA-COA-200087

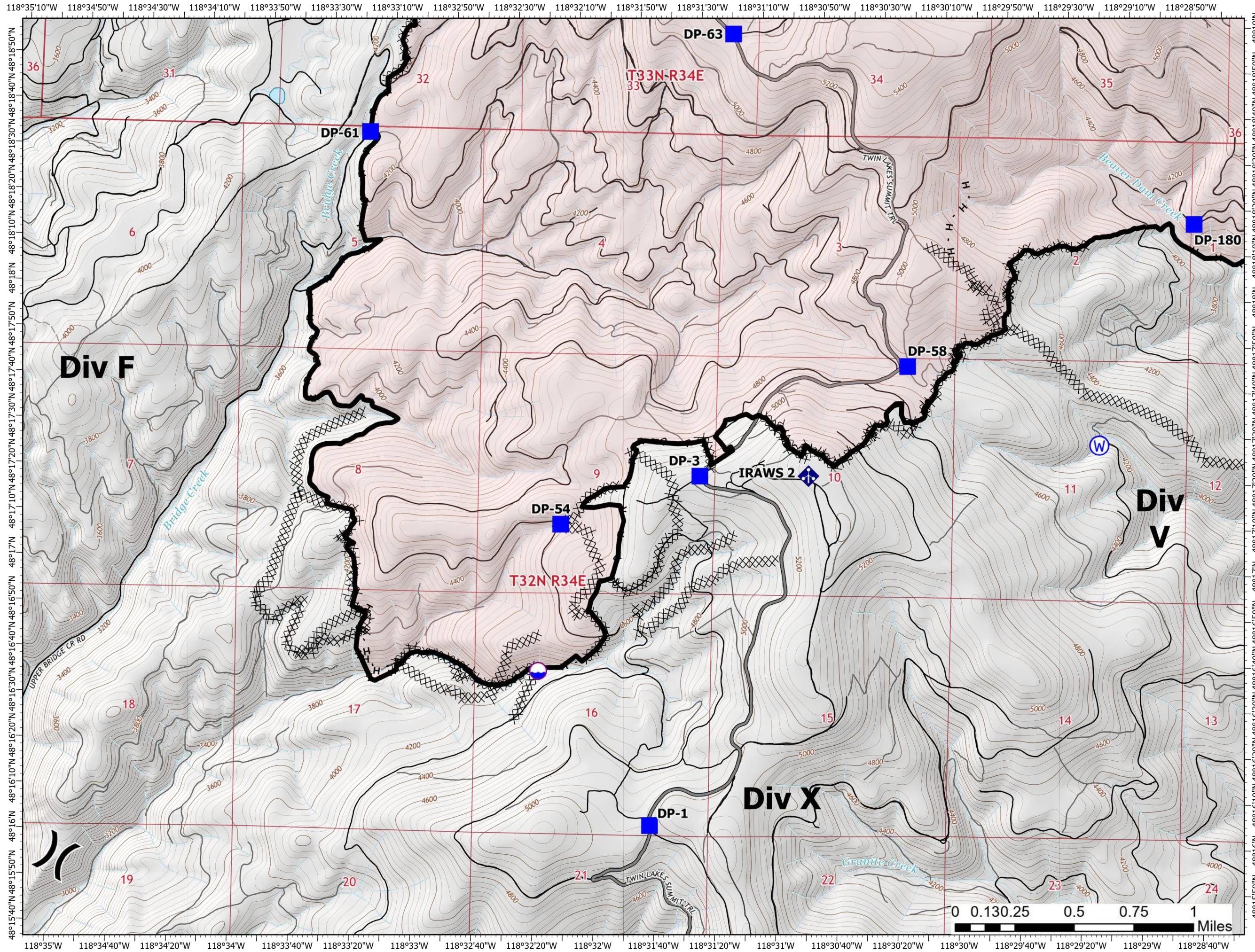
45,633 Acres
on 08/26/2021 at 2130

August 27, 2021



Page 15 of 16

- Dip Site
- Division Break
- Drop Point
- Mobile Weather Unit
- Water Source
- Completed Dozer Line
- Completed Hand Line
- Completed Road as Line
- Contained Line
- Fire Perimeter
- State or Territory
- Main Route - Unimproved
- Local Road
- 4WD
- County or Equivalent
- Driveable
- Not Driveable



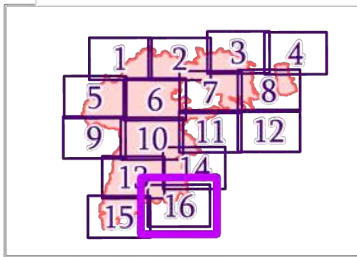
IAP MAP

Summit Trail

WA-COA-200087

45,633 Acres
on 08/26/2021 at 2130

August 27, 2021



Page 16 of 16

- Drop Point
- ✕ Closure
- H Lookout
- Hot Spot - Spot Fire
- Water Development or Draft Site
- ▶ Dozer Push
- ◆ Repeater
- W Water Source
- ⊗ Completed Dozer Line
- H Completed Hand Line
- R Completed Road as Line
- Retardant Drop
- Contained Line
- Fire Perimeter
- State or Territory
- Main Route - Improved
- Local Road
- County or Equivalent
- Driveable
- Not Driveable

