

Transportation Map

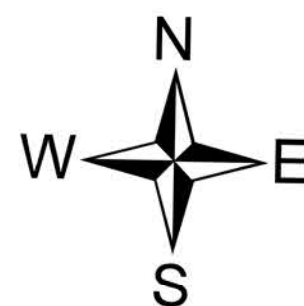
Summit Trail

WA-COA-200087

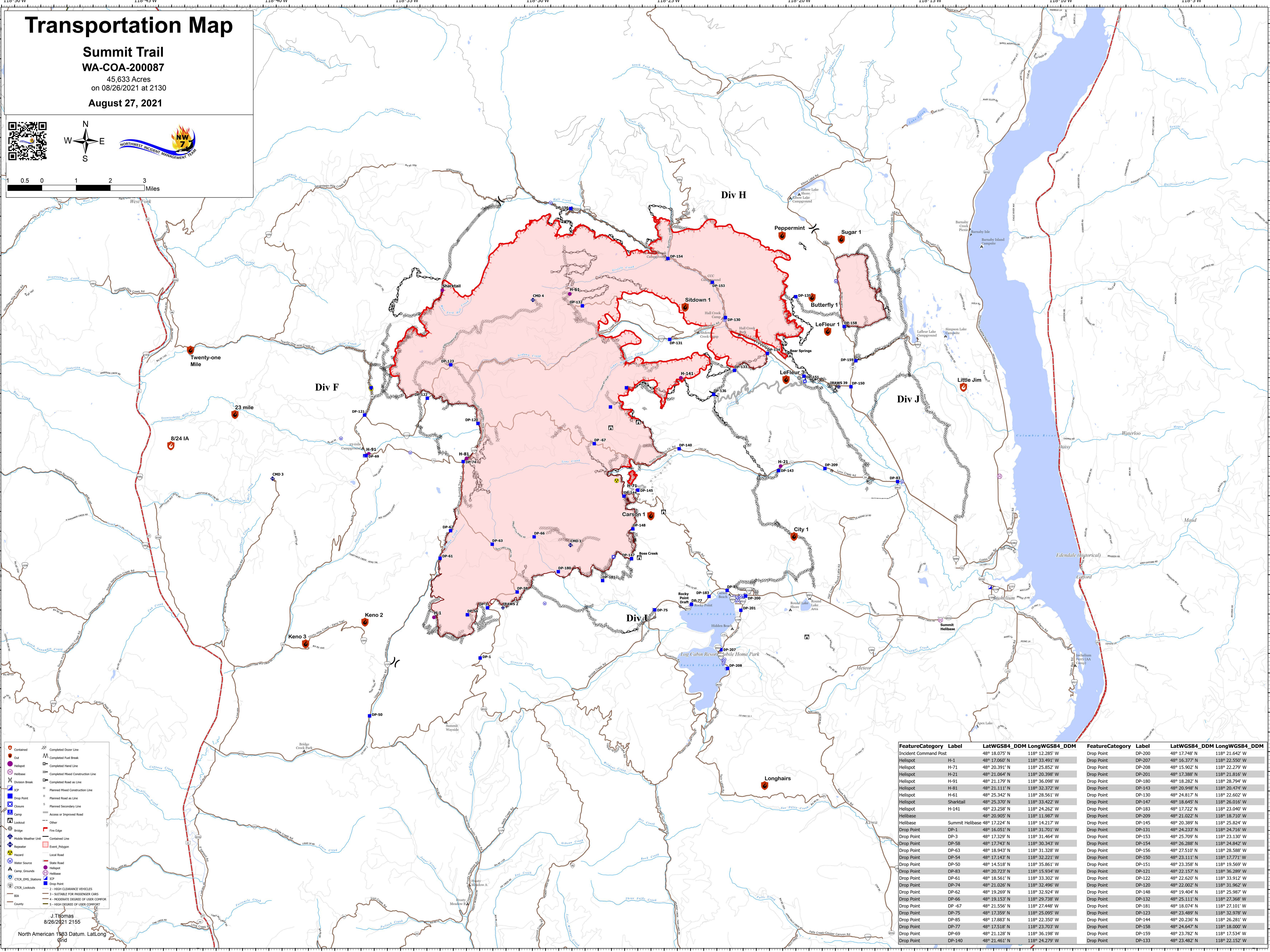
45,633 Acres

on 08/26/2021 at 2130

August 27, 2021



0 0.5 1 2 3 Miles



- Contour
- Cut
- Helispot
- Yellow
- Division Break
- Drop Point
- Closure
- Camp
- Lookout
- Bridge
- Mobile Weather Unit
- Generator
- Hazard
- Water Source
- Camp Grounds
- CTR/EMS Stations
- CTR Lookouts
- BSA
- County
- Completed Deer Line
- Completed Fuel Break
- Completed Hand Line
- Completed Mixed Construction Line
- Planned Road as Line
- Planned Mixed Construction Line
- Planned Road as Line
- Planned Secondary Line
- Access or Improved Road
- Fire Edge
- Contained Line
- Local Road
- State Road
- Helispot
- Helispot
- Drop Point
- 2 - HIGH CLEARANCE VEHICLES
- 3 - SUITABLE FOR PASSENGER CARS
- 4 - MODERATE DEGREE OF USER COMFORT
- 5 - HIGH DEGREE OF USER COMFORT

J.Thomas
8/26/2021 2155
North American 1983 Datum. LatLong Grid

FeatureCategory	Label	LatWGS84_DDM	LongWGS84_DDM	FeatureCategory	Label	LatWGS84_DDM	LongWGS84_DDM
Incident Command Post		48° 18.075' N	118° 12.285' W	Drop Point	DP-200	48° 17.748' N	118° 21.642' W
Helispot	H-1	48° 17.060' N	118° 33.491' W	Drop Point	DP-207	48° 16.377' N	118° 22.950' W
Helispot	H-71	48° 20.391' N	118° 25.852' W	Drop Point	DP-208	48° 15.902' N	118° 22.279' W
Helispot	H-21	48° 21.064' N	118° 20.398' W	Drop Point	DP-201	48° 17.388' N	118° 21.816' W
Helispot	H-91	48° 21.179' N	118° 36.098' W	Drop Point	DP-180	48° 16.282' N	118° 28.794' W
Helispot	H-81	48° 21.111' N	118° 32.372' W	Drop Point	DP-143	48° 20.948' N	118° 20.474' W
Helispot	H-61	48° 25.342' N	118° 28.561' W	Drop Point	DP-130	48° 24.817' N	118° 22.602' W
Helispot	Sharktail	48° 25.370' N	118° 33.422' W	Drop Point	DP-147	48° 18.645' N	118° 26.016' W
Helispot	H-141	48° 23.258' N	118° 24.262' W	Drop Point	DP-183	48° 17.722' N	118° 23.040' W
Helibase	Summit Helibase	48° 20.905' N	118° 11.987' W	Drop Point	DP-209	48° 21.022' N	118° 18.710' W
Helibase	Summit Helibase	48° 17.224' N	118° 14.217' W	Drop Point	DP-145	48° 20.389' N	118° 25.824' W
Drop Point	DP-1	48° 16.051' N	118° 31.701' W	Drop Point	DP-131	48° 24.233' N	118° 24.716' W
Drop Point	DP-3	48° 17.329' N	118° 31.464' W	Drop Point	DP-153	48° 25.709' N	118° 23.130' W
Drop Point	DP-58	48° 17.743' N	118° 30.343' W	Drop Point	DP-154	48° 26.288' N	118° 24.842' W
Drop Point	DP-63	48° 18.943' N	118° 31.328' W	Drop Point	DP-156	48° 27.510' N	118° 28.588' W
Drop Point	DP-54	48° 17.143' N	118° 32.221' W	Drop Point	DP-150	48° 23.111' N	118° 17.771' W
Drop Point	DP-50	48° 14.518' N	118° 35.861' W	Drop Point	DP-151	48° 23.358' N	118° 19.569' W
Drop Point	DP-83	48° 20.723' N	118° 15.934' W	Drop Point	DP-121	48° 22.157' N	118° 36.289' W
Drop Point	DP-61	48° 18.561' N	118° 33.302' W	Drop Point	DP-122	48° 22.620' N	118° 33.912' W
Drop Point	DP-74	48° 21.026' N	118° 32.496' W	Drop Point	DP-120	48° 22.002' N	118° 31.962' W
Drop Point	DP-62	48° 19.269' N	118° 32.924' W	Drop Point	DP-148	48° 19.404' N	118° 25.987' W
Drop Point	DP-66	48° 19.153' N	118° 29.738' W	Drop Point	DP-132	48° 25.111' N	118° 27.368' W
Drop Point	DP-67	48° 21.556' N	118° 27.448' W	Drop Point	DP-181	48° 18.074' N	118° 27.101' W
Drop Point	DP-75	48° 17.359' N	118° 25.095' W	Drop Point	DP-123	48° 23.489' N	118° 32.978' W
Drop Point	DP-85	48° 17.883' N	118° 22.350' W	Drop Point	DP-144	48° 20.236' N	118° 26.281' W
Drop Point	DP-77	48° 17.518' N	118° 23.703' W	Drop Point	DP-158	48° 24.647' N	118° 18.000' W
Drop Point	DP-69	48° 21.128' N	118° 36.198' W	Drop Point	DP-159	48° 23.782' N	118° 17.534' W
Drop Point	DP-140	48° 21.461' N	118° 24.279' W	Drop Point	DP-133	48° 23.482' N	118° 22.152' W