

IAP MAP

Summit Trail

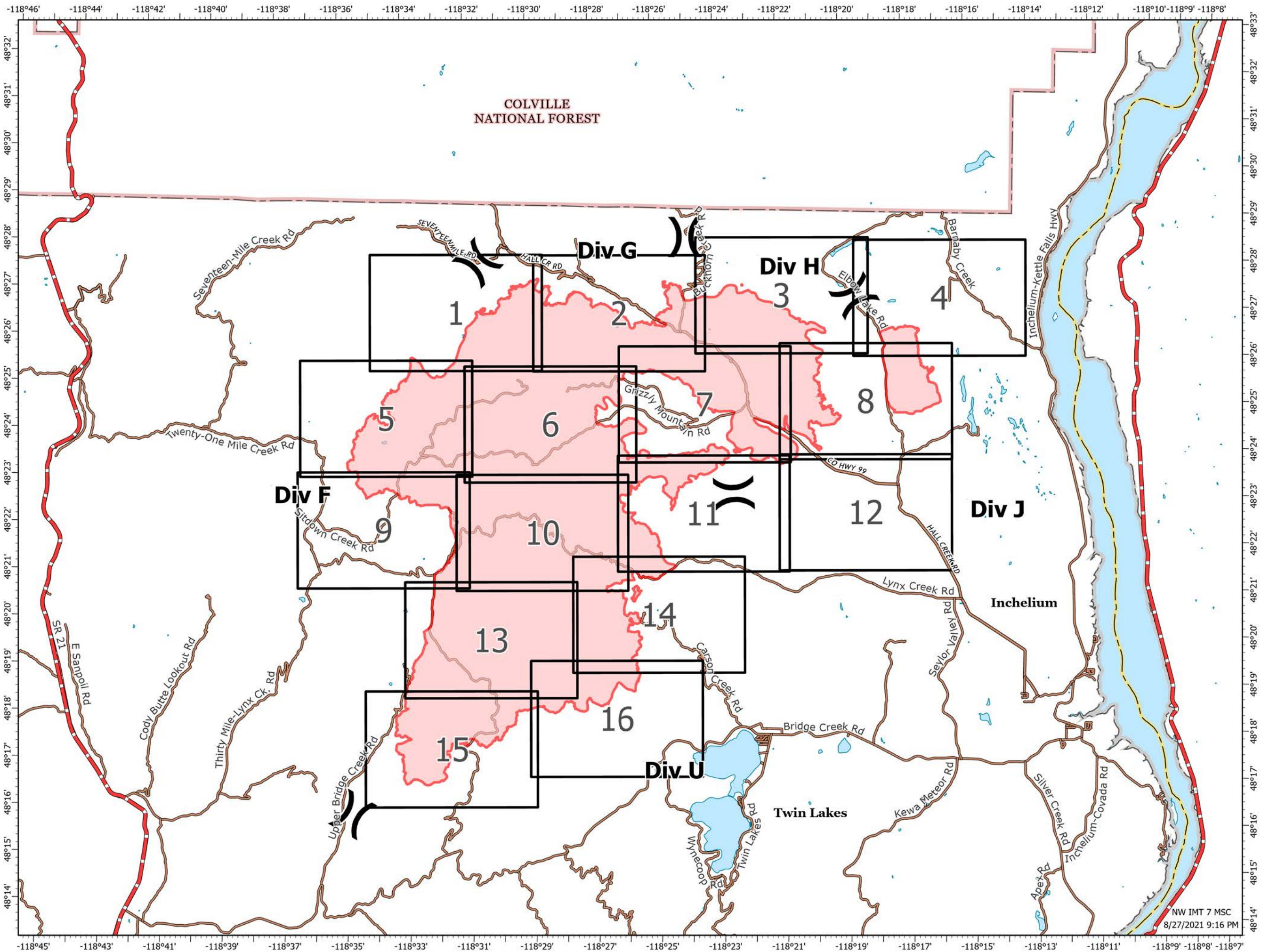
WA-COA-200087

45,673 Acres
on 08/27/2021 at 2100

August 28, 2021



- (X) Division Break
- Fire Perimeter
- Additional Rd Selections
- Comprehensive Roads Hosted
- Owner
 - BIA
 - City
 - County
 - Other Drive-able
 - Other Not Drive-able
 - Private
 - State
 - Tribe
 - Highway



1:140,000
NAD 1983
UTM 11N

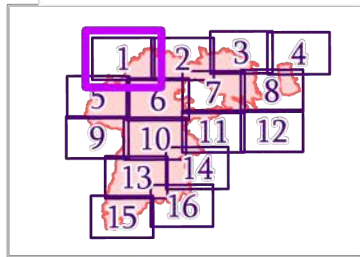
IAP MAP

Summit Trail

WA-COA-200087

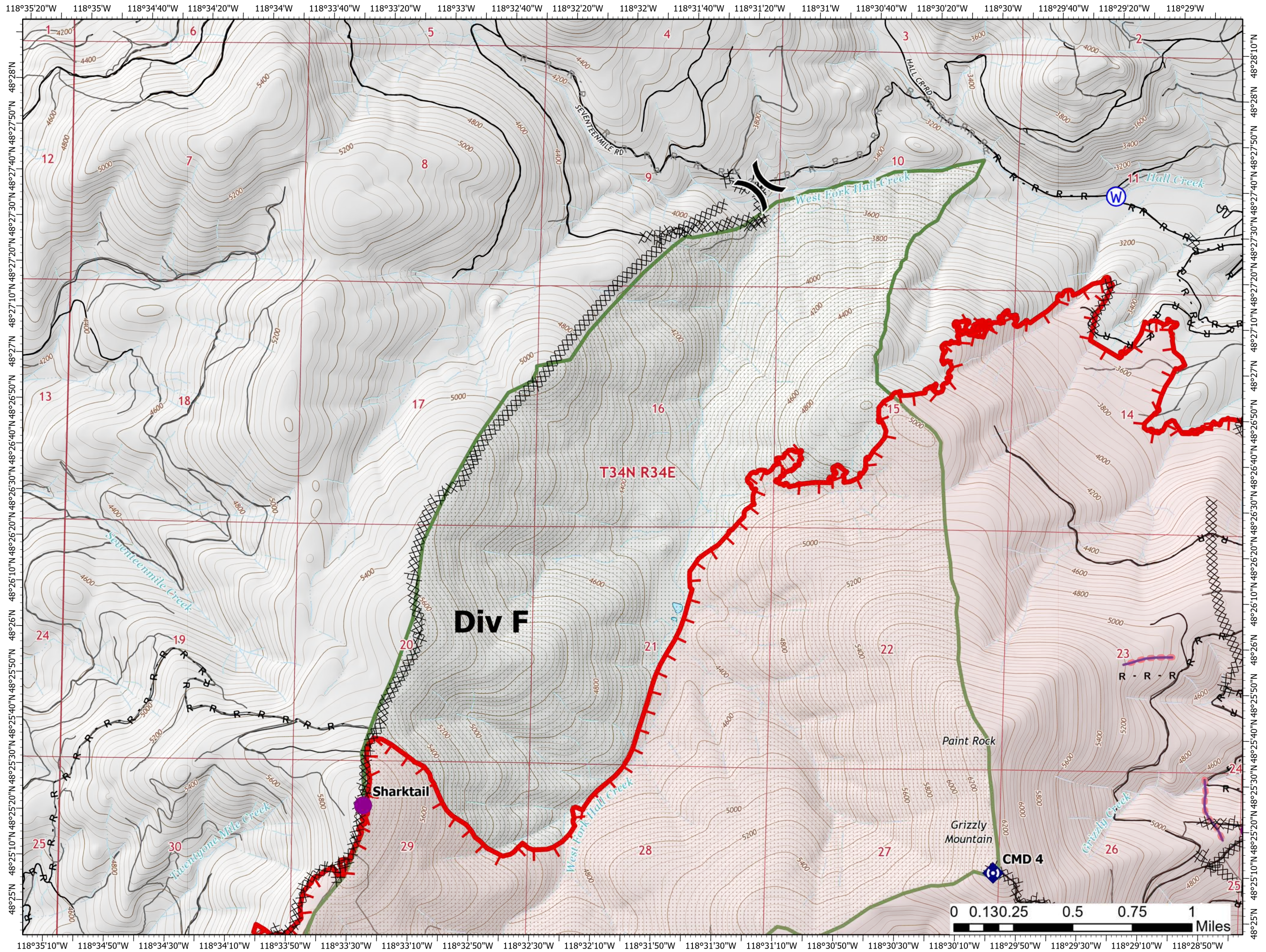
45,673 Acres
on 08/27/2021 at 2100

August 28, 2021



Page 1 of 16

- Helispot
-) Division Break
- Drop Point
- ◆ Repeater
- ⊙ Water Source
- X Completed Dozer Line
- R Completed Road as Line
- R Planned Road as Line
- Retardant Drop
- ┌ Fire Edge
- Contained Line
- Fire Perimeter
- State or Territory
- Local Road
- County or Equivalent
- Wilderness Area
- Driveable
- Not Driveable



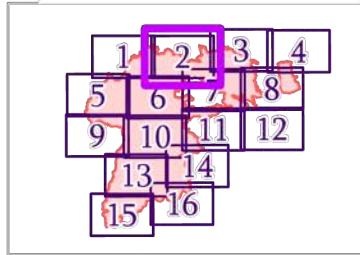
IAP MAP

Summit Trail

WA-COA-200087

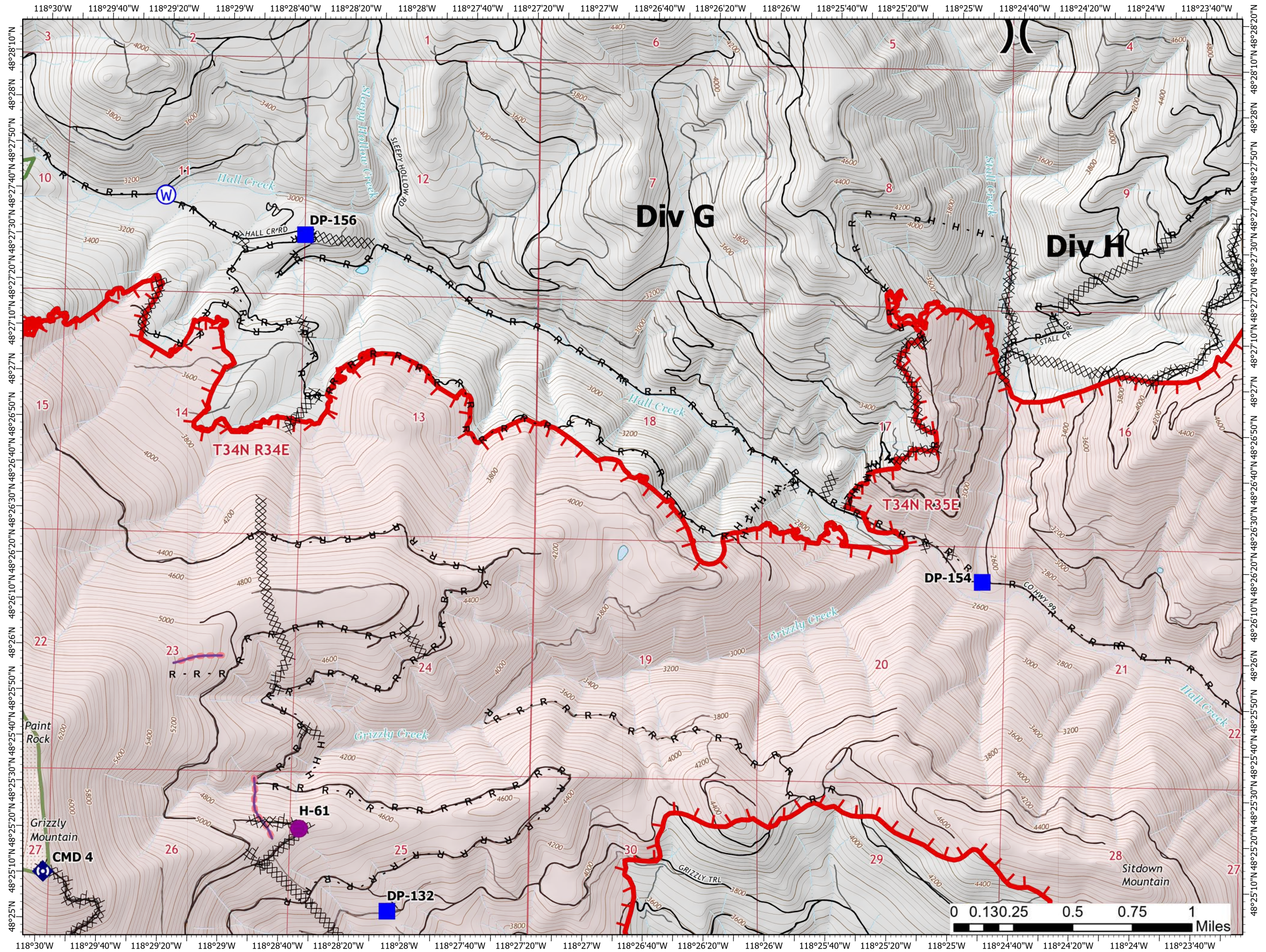
45,673 Acres
on 08/27/2021 at 2100

August 28, 2021



Page 2 of 16

- Helispot
-) Division Break
- DP Drop Point
- R Repeater
- W Water Source
- XX Completed Dozer Line
- H Completed Hand Line
- R Completed Road as Line
- R Planned Road as Line
- Retardant Drop
- Fire Edge
- Fire Perimeter
- State or Territory
- Local Road
- 4WD
- County or Equivalent
- Wilderness Area
- Driveable
- Not Driveable



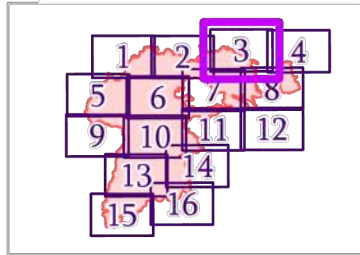
IAP MAP

Summit Trail

WA-COA-200087

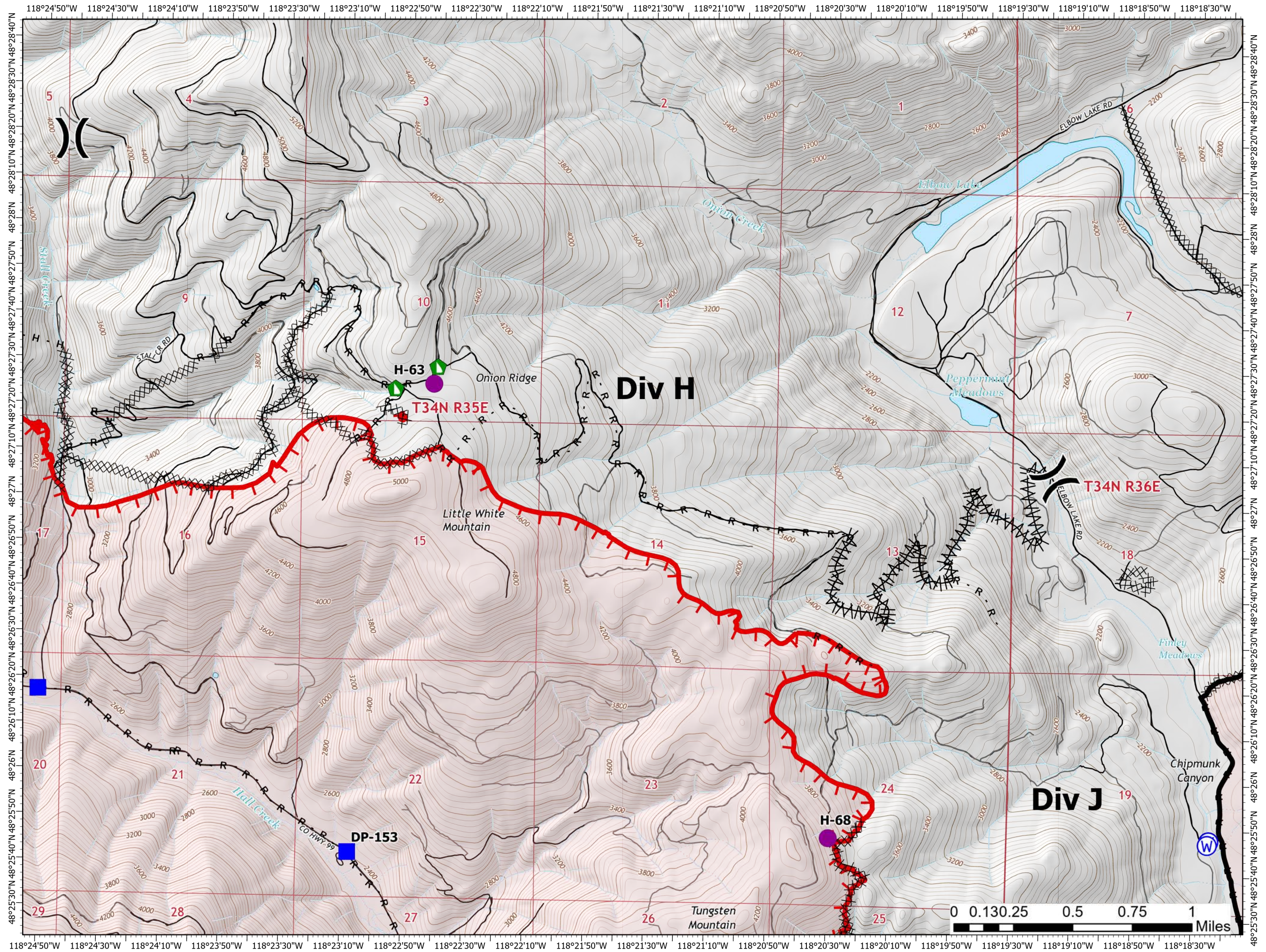
45,673 Acres
on 08/27/2021 at 2100

August 28, 2021



Page 3 of 16

- Helispot
-) Division Break
- Drop Point
- Landing or Log Deck
- ▲ Dozer Push
- W Water Source
- X Completed Dozer Line
- ^ Completed Fuel Break
- H Completed Hand Line
- R Completed Road as Line
- Fire Edge
- Contained Line
- Fire Perimeter
- State or Territory
- Local Road
- 4WD
- County or Equivalent
- Driveable
- Not Driveable



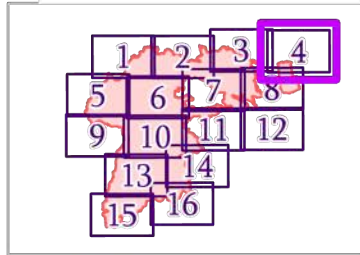
IAP MAP

Summit Trail

WA-COA-200087

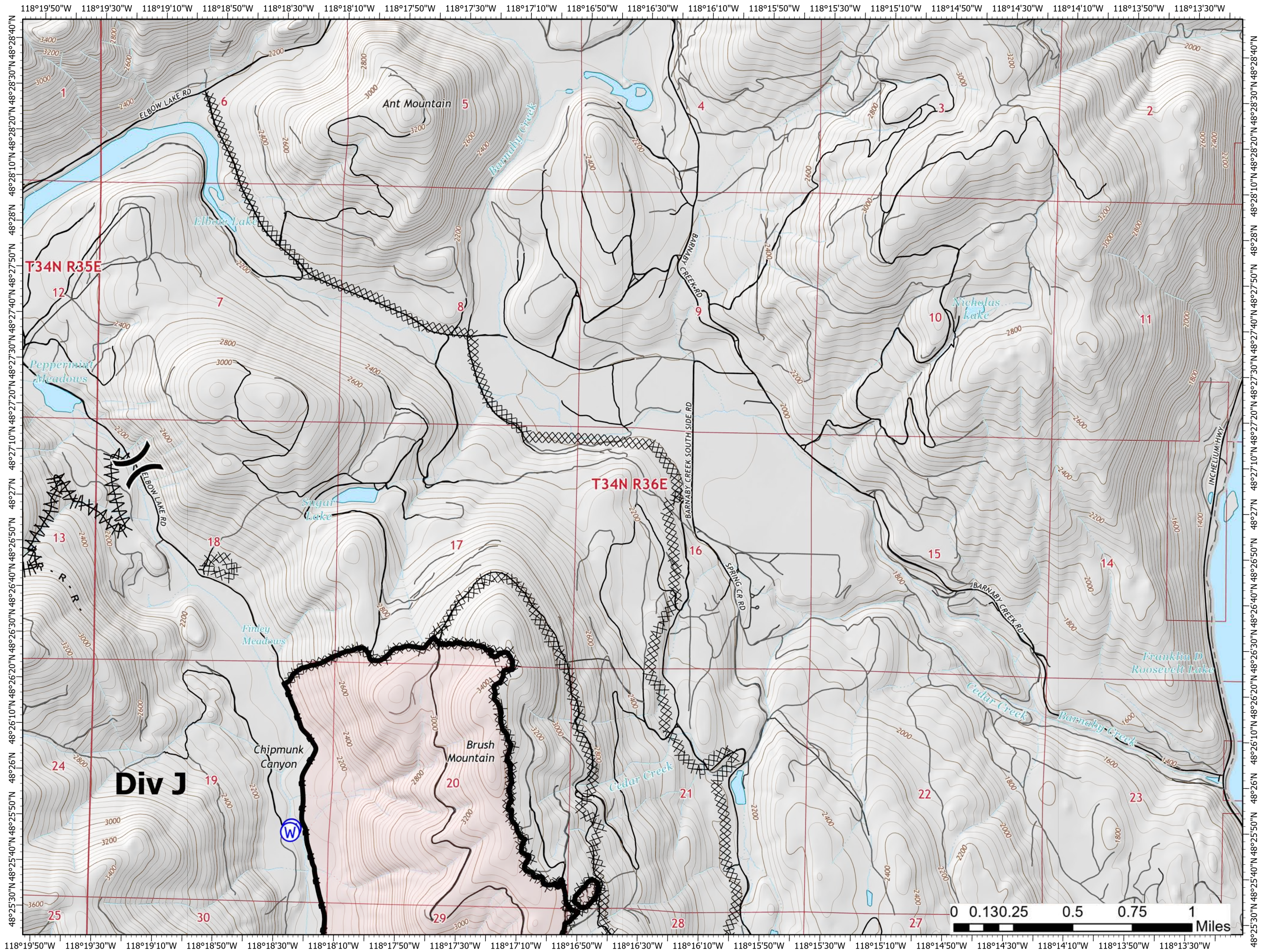
45,673 Acres
on 08/27/2021 at 2100

August 28, 2021



Page 4 of 16

- Division Break
- Drop Point
- Water Source
- Completed Dozer Line
- Completed Fuel Break
- Completed Road as Line
- Contained Line
- Fire Perimeter
- State or Territory
- Local Road
- County or Equivalent
- Driveable
- Not Driveable



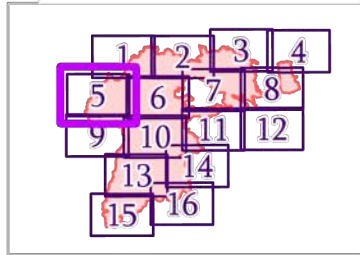
IAP MAP

Summit Trail

WA-COA-200087

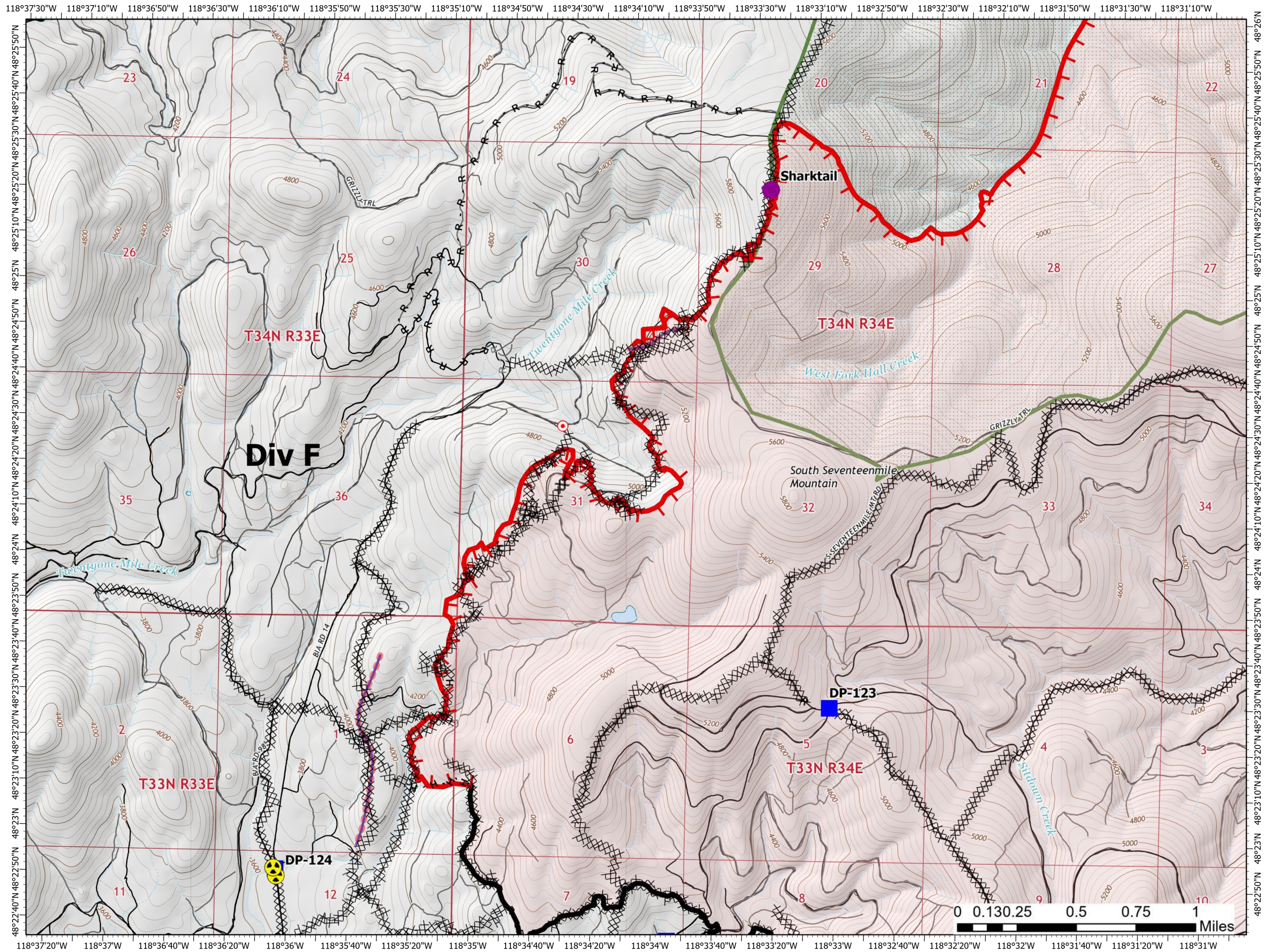
45,673 Acres
on 08/27/2021 at 2100

August 28, 2021



Page 5 of 16

- Helispot
- Drop Point
- Hot Spot - Spot Fire
- ☠ Hazard
- ⊗ Completed Dozer Line
- H Completed Hand Line
- R Completed Road as Line
- R Planned Road as Line
- Retardant Drop
- ┌ Fire Edge
- Contained Line
- Fire Perimeter
- State or Territory
- Local Road
- County or Equivalent
- Wilderness Area
- Driveable
- Not Driveable



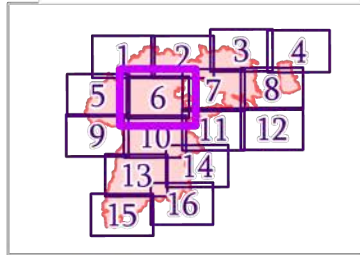
IAP MAP

Summit Trail

WA-COA-200087

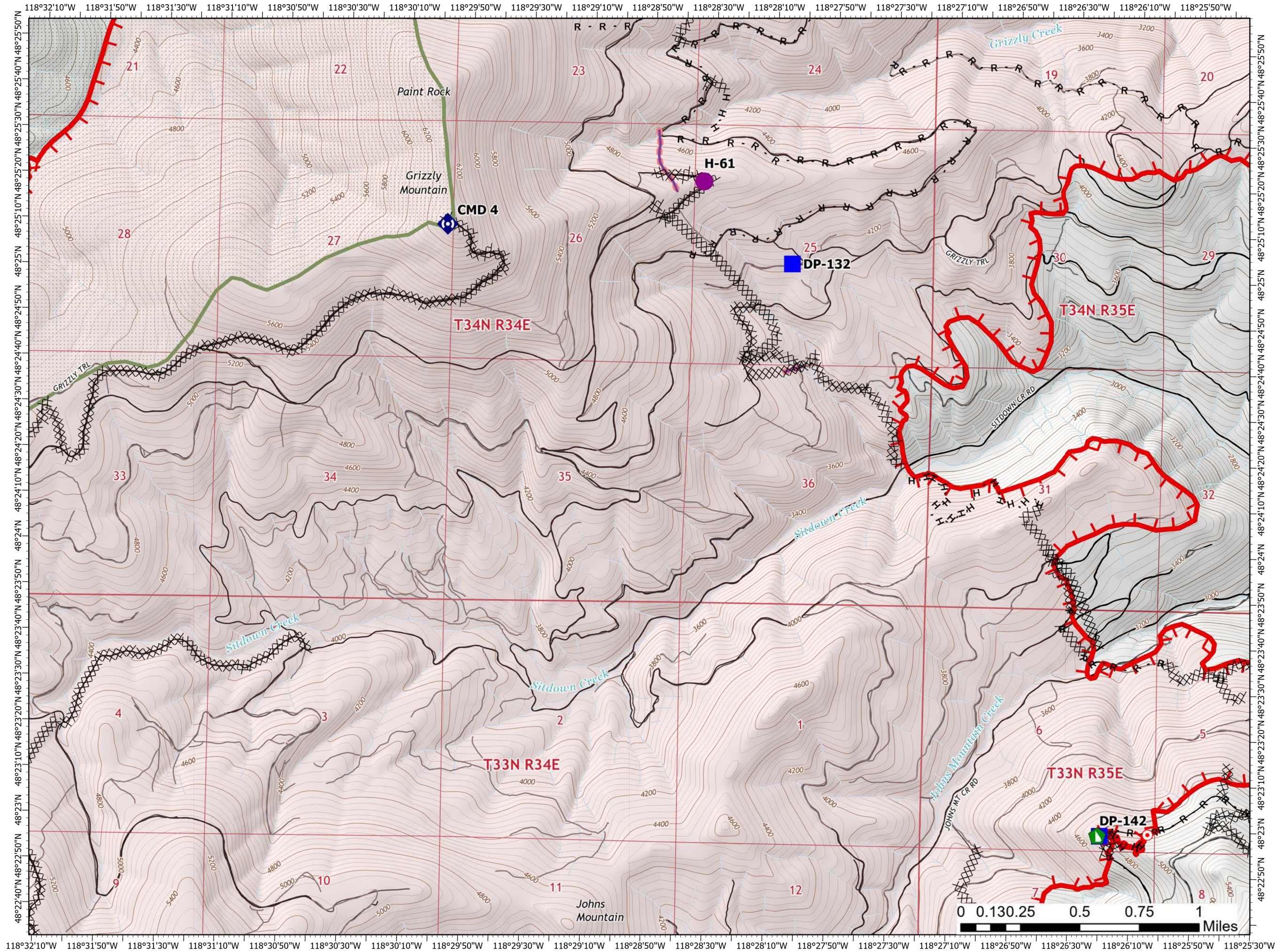
45,673 Acres
on 08/27/2021 at 2100

August 28, 2021



Page 6 of 16

- Helispot
- Drop Point
- Hot Spot - Spot Fire
- ▶ Dozer Push
- ◆ Repeater
- ⊗ Completed Dozer Line
- H Completed Hand Line
- R Completed Road as Line
- Retardant Drop
- Fire Edge
- Fire Perimeter
- State or Territory
- Local Road
- ▭ County or Equivalent
- Wilderness Area
- Driveable
- Not Driveable



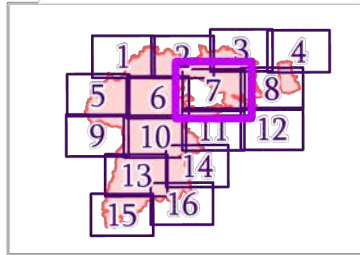
IAP MAP

Summit Trail

WA-COA-200087

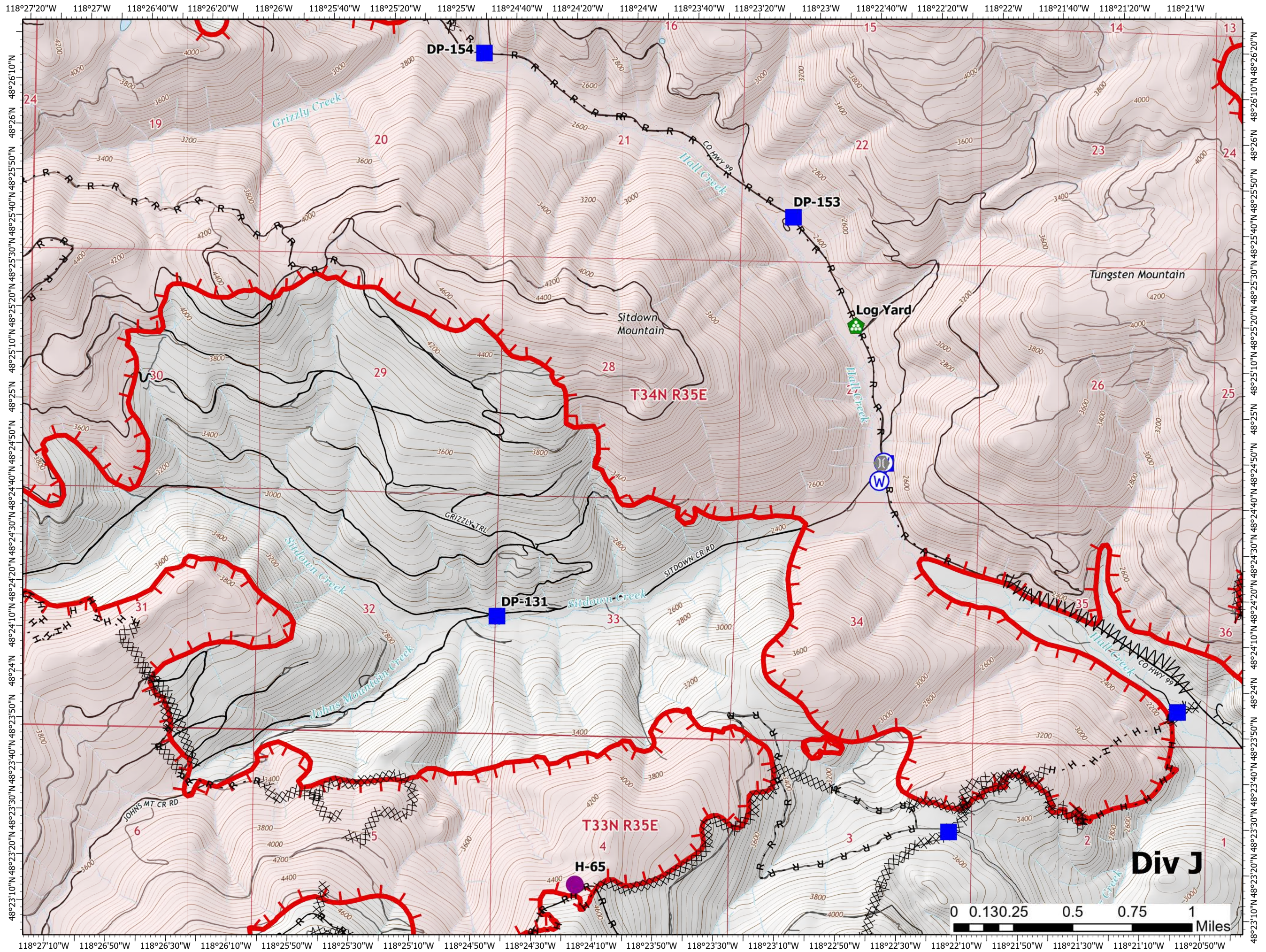
45,673 Acres
on 08/27/2021 at 2100

August 28, 2021



Page 7 of 16

- Helispot
- Drop Point
- Hot Spot - Spot Fire
- Bridge
- Landing or Log Deck
- Dozer Push
- Water Source
- Completed Dozer Line
- Completed Fuel Break
- Completed Hand Line
- Completed Road as Line
- Access or Improved Road
- Fire Edge
- Contained Line
- Fire Perimeter
- State or Territory
- Local Road
- County or Equivalent
- Driveable
- Not Driveable



Div J

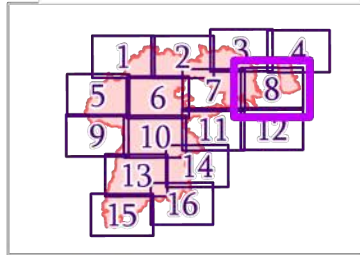
IAP MAP

Summit Trail

WA-COA-200087

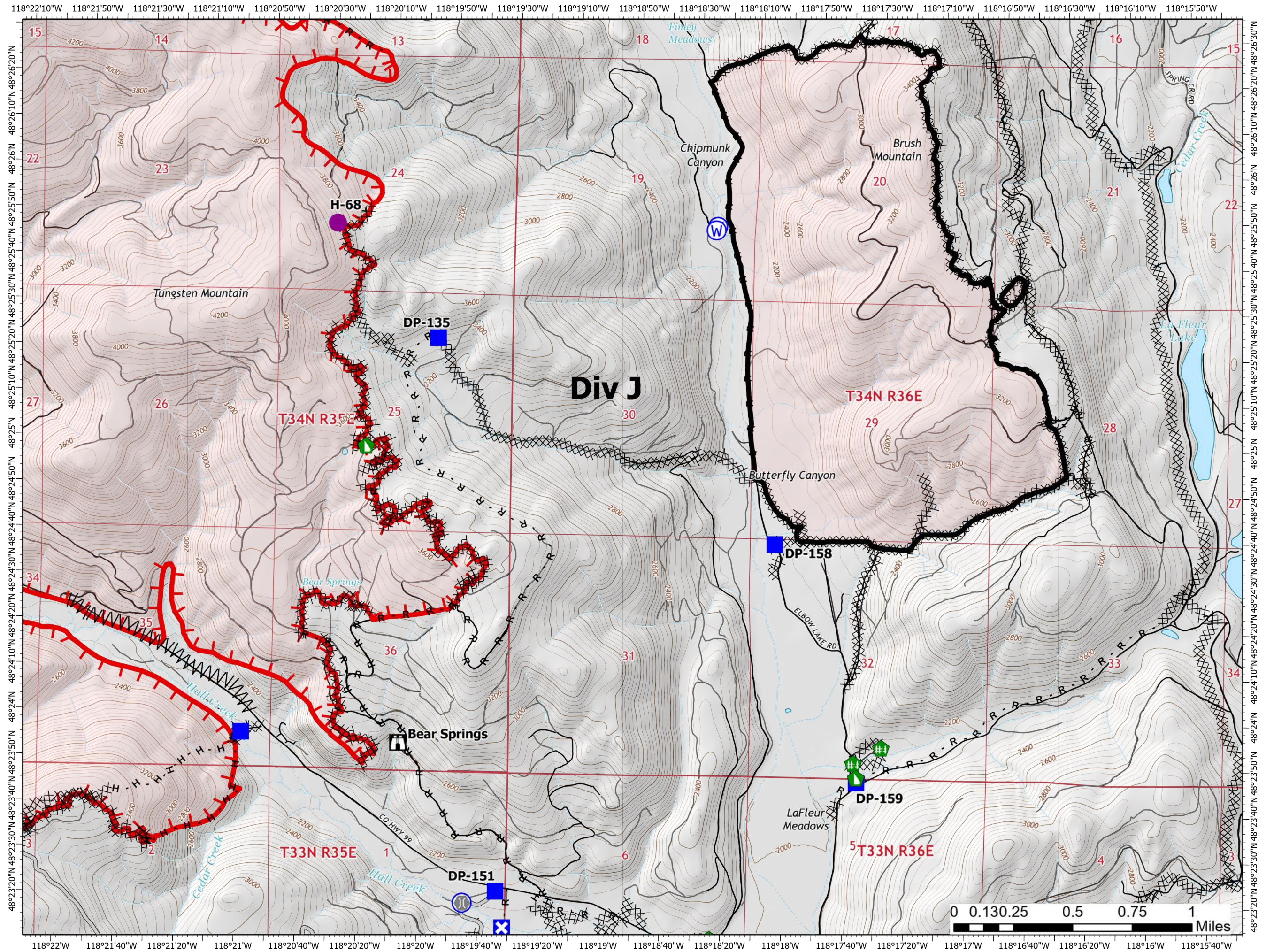
45,673 Acres
on 08/27/2021 at 2100

August 28, 2021



Page 8 of 16

- Helispot
- Drop Point
- ✕ Closure
- 🏠 Lookout
- 🌉 Bridge
- 🌿 Fence - Cut/Damaged
- 🚧 Dozer Push
- ⊙ Water Source
- ✕ Completed Dozer Line
- ^ Completed Fuel Break
- H Completed Hand Line
- R Completed Road as Line
- Access or Improved Road
- ┌ Fire Edge
- Contained Line
- Fire Perimeter
- State or Territory
- Local Road
- - - 4WD
- County or Equivalent
- Driveable
- Not Driveable



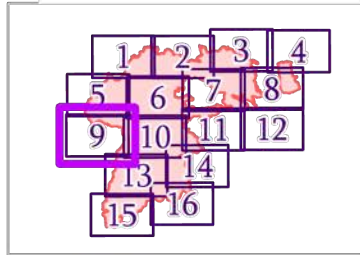
IAP MAP

Summit Trail

WA-COA-200087

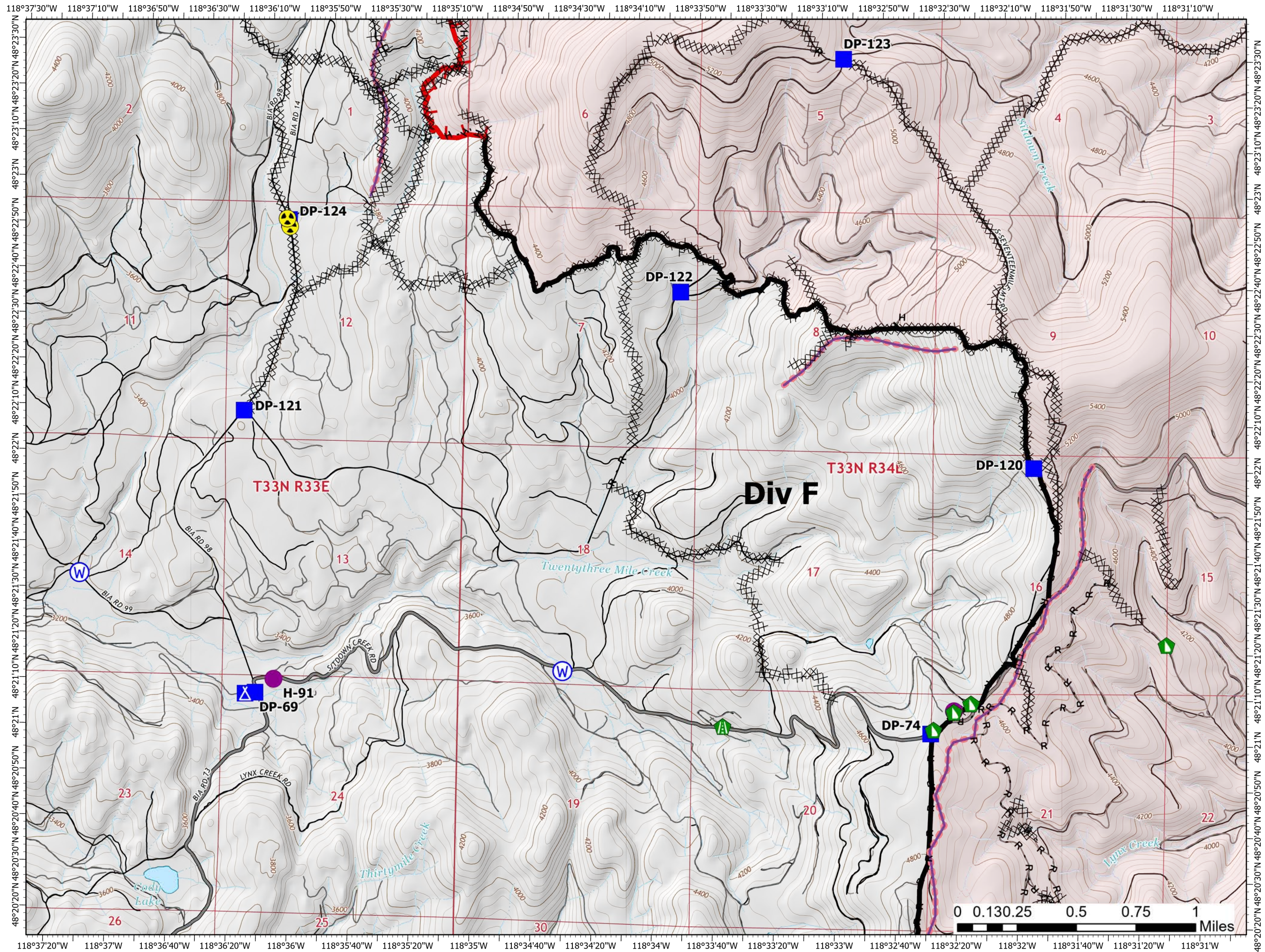
45,673 Acres
on 08/27/2021 at 2100

August 28, 2021



Page 9 of 16

- Helispot
- Drop Point
- ▲ Camp
- ▲ Road Repair
- ▲ Dozer Push
- ☠ Hazard
- ⊙ Water Source
- ⊗ Completed Dozer Line
- H Completed Hand Line
- R Completed Road as Line
- Retardant Drop
- Fire Edge
- Contained Line
- Fire Perimeter
- State or Territory
- Main Route - Unimproved
- Local Road
- 4WD
- County or Equivalent
- Driveable
- Not Driveable



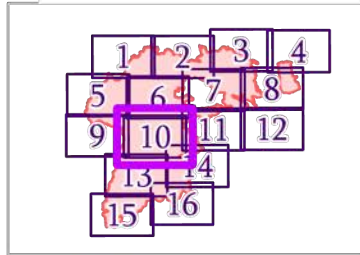
IAP MAP

Summit Trail

WA-COA-200087

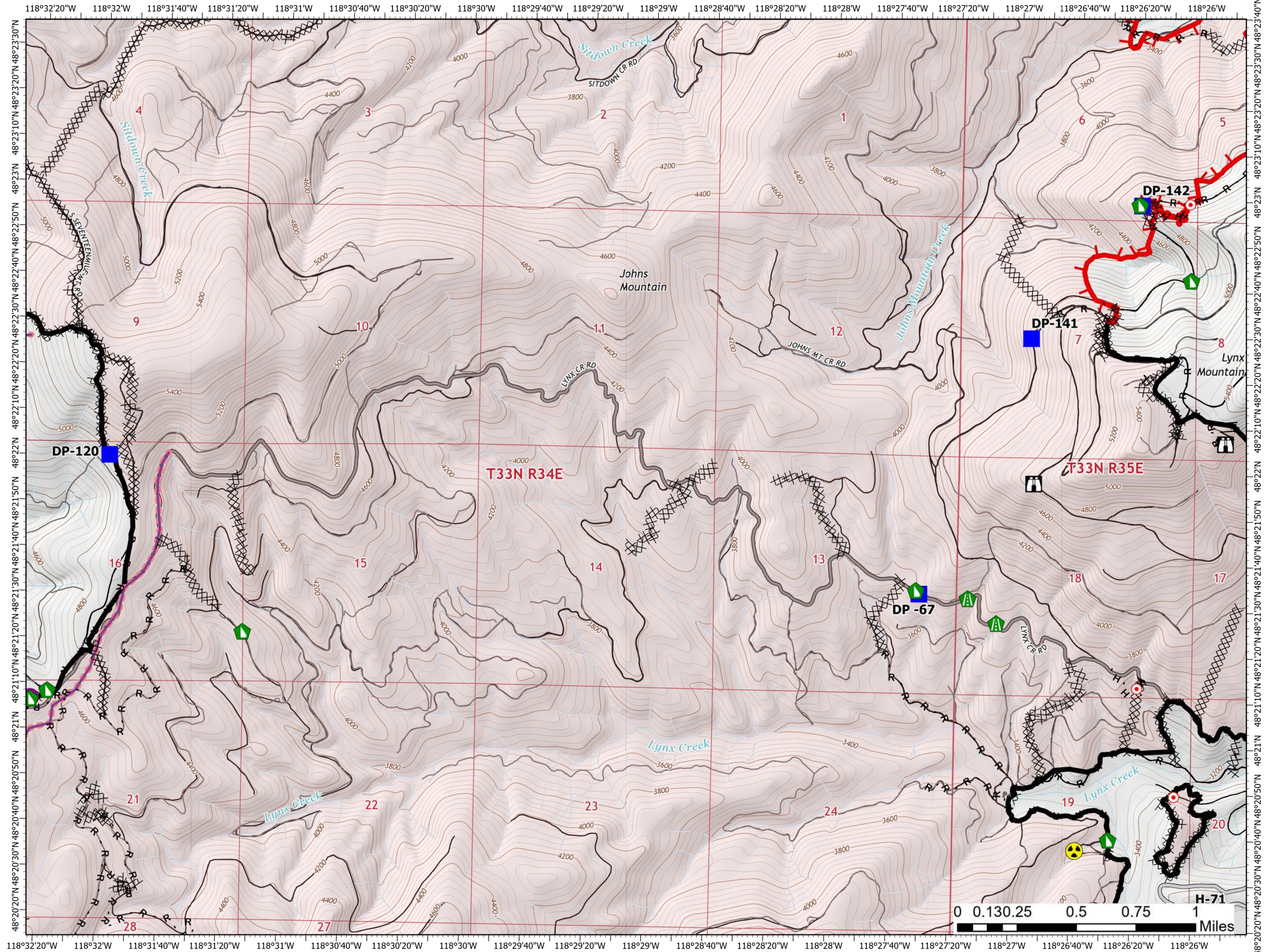
45,673 Acres
on 08/27/2021 at 2100

August 28, 2021



Page 10 of 16

- Helispot
- Drop Point
- Lookout
- Hot Spot - Spot Fire
- Structure Wrap
- Road Repair
- Dozer Push
- Hazard
- Completed Dozer Line
- Completed Fuel Break
- Completed Hand Line
- Completed Mixed Construction Line
- Completed Road as Line
- Planned Secondary Line
- Access or Improved Road
- Other
- Retardant Drop
- Fire Edge
- Contained Line
- Fire Perimeter
- State or Territory
- Main Route - Unimproved
- Local Road
- 4WD
- County or Equivalent
- Driveable



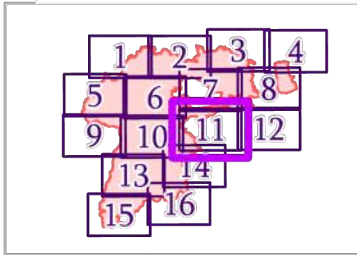
IAP MAP

Summit Trail

WA-COA-200087

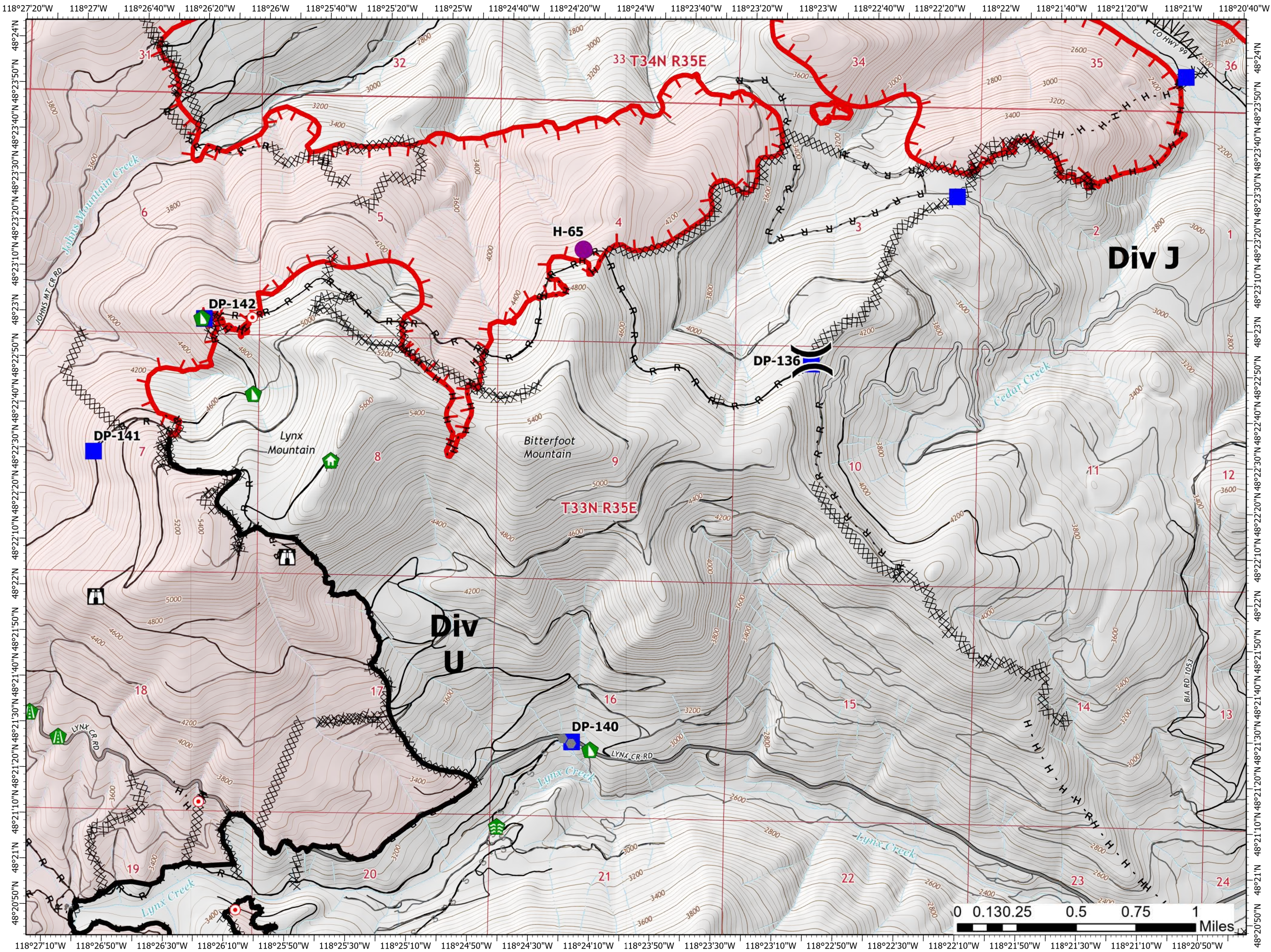
45,673 Acres
on 08/27/2021 at 2100

August 28, 2021



Page 11 of 16

- Helispot
- ⌋ Division Break
- Drop Point
- Lookout
- Hot Spot - Spot Fire
- Comm Tower
- Structure Wrap
- Stream Crossing
- Road Repair
- Dozer Push
- ⊗ Completed Dozer Line
- ∧ Completed Fuel Break
- H Completed Hand Line
- M Completed Mixed Construction Line
- R Completed Road as Line
- S Planned Secondary Line
- Access or Improved Road
- Other
- ┌ Fire Edge
- Contained Line
- Fire Perimeter
- State or Territory
- Main Route - Unimproved
- Local Road
- County or Equivalent
- Driveable



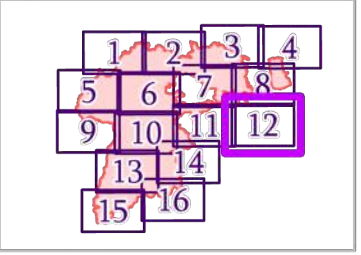
IAP MAP

Summit Trail

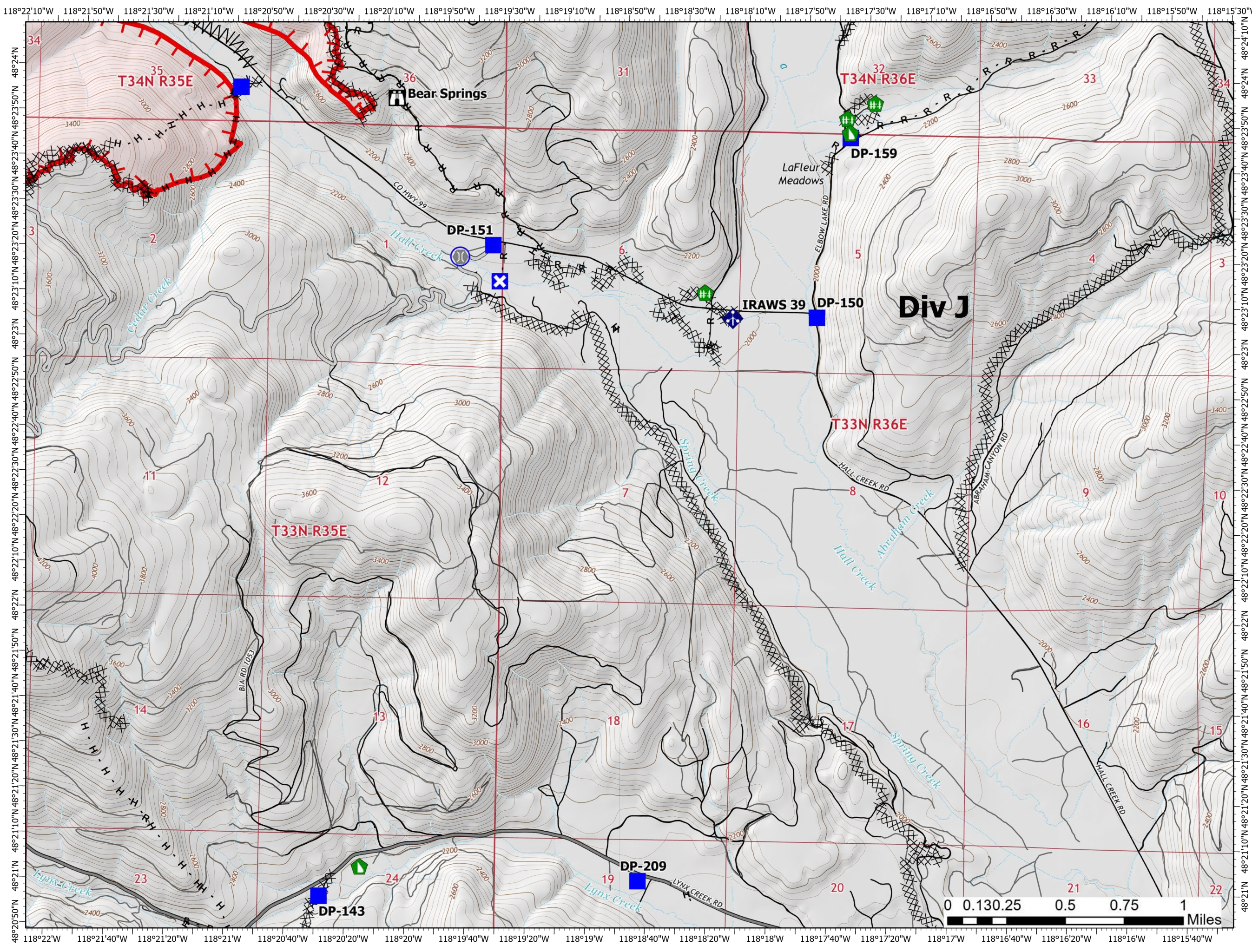
WA-COA-200087

45,673 Acres
on 08/27/2021 at 2100

August 28, 2021



- Drop Point
- ✕ Closure
- Lookout
- Bridge
- Fence - Cut/Damaged
- Dozer Push
- Mobile Weather Unit
- Water Source
- Completed Dozer Line
- Completed Fuel Break
- Completed Hand Line
- Completed Road as Line
- Access or Improved Road
- Fire Edge
- Contained Line
- Fire Perimeter
- State or Territory
- Main Route - Unimproved
- Local Road
- 4WD
- County or Equivalent
- Driveable
- Not Driveable



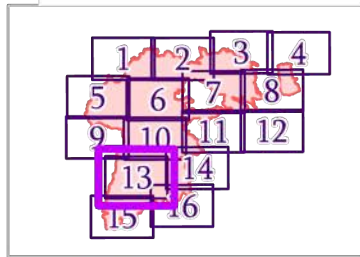
IAP MAP

Summit Trail

WA-COA-200087

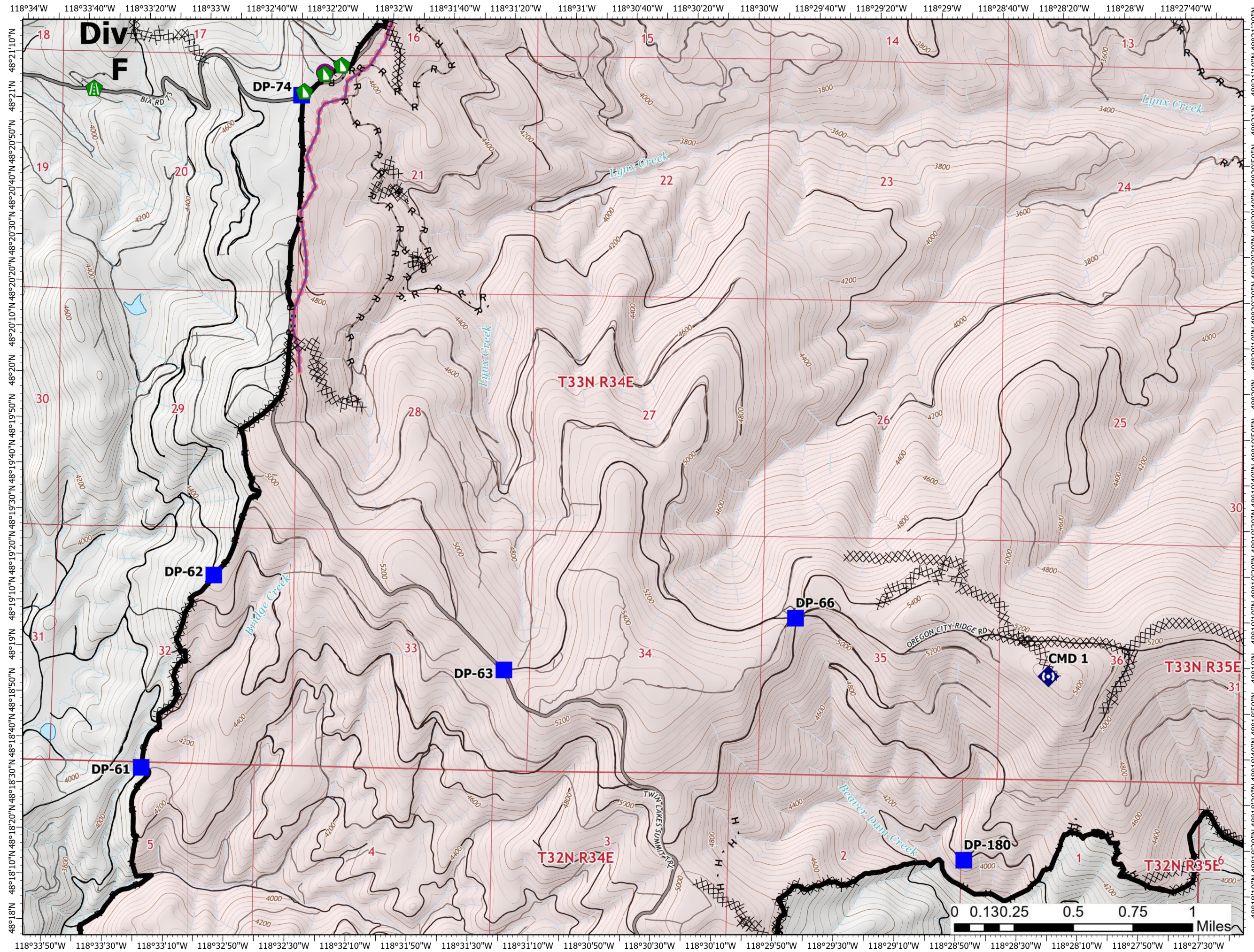
45,673 Acres
on 08/27/2021 at 2100

August 28, 2021



Page 13 of 16

- Helispot
- Drop Point
- ▲ Road Repair
- ▲ Dozer Push
- ◆ Repeater
- ⊗ Completed Dozer Line
- H Completed Hand Line
- R Completed Road as Line
- Retardant Drop
- Contained Line
- Fire Perimeter
- State or Territory
- Main Route - Unimproved
- Local Road
- 4WD
- County or Equivalent
- Driveable
- Not Driveable



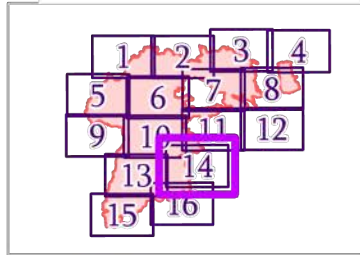
IAP MAP

Summit Trail

WA-COA-200087

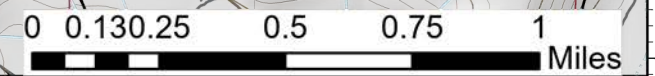
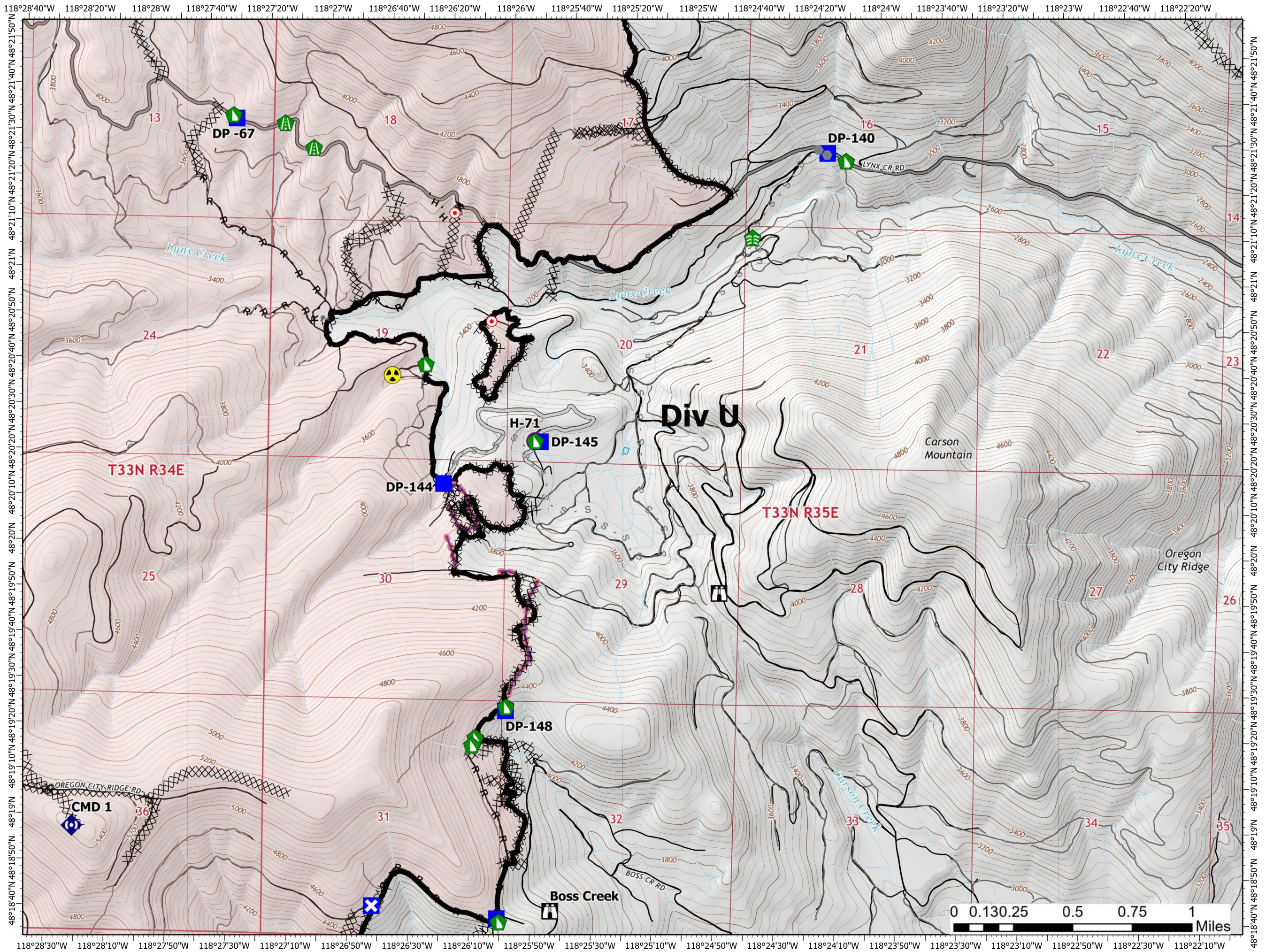
45,673 Acres
on 08/27/2021 at 2100

August 28, 2021



Page 14 of 16

- Helispot
- Drop Point
- ✕ Closure
- 🏠 Lookout
- Hot Spot - Spot Fire
- 📶 Comm Tower
- 🌿 Stream Crossing
- 🛠️ Road Repair
- 🚧 Dozer Push
- 📡 Repeater
- ☠️ Hazard
- ⊗ Completed Dozer Line
- H Completed Hand Line
- M Completed Mixed Construction Line
- R Completed Road as Line
- S Planned Secondary Line
- Access or Improved Road
- - - Other
- 🚰 Retardant Drop
- ▬ Contained Line
- ▭ Fire Perimeter
- ▭ State or Territory
- Main Route - Unimproved
- Local Road
- ▭ County or Equivalent
- Driveable



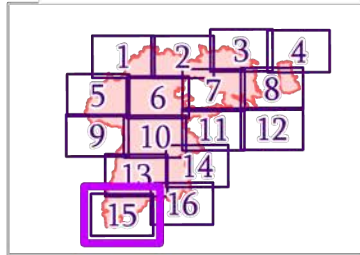
IAP MAP

Summit Trail

WA-COA-200087

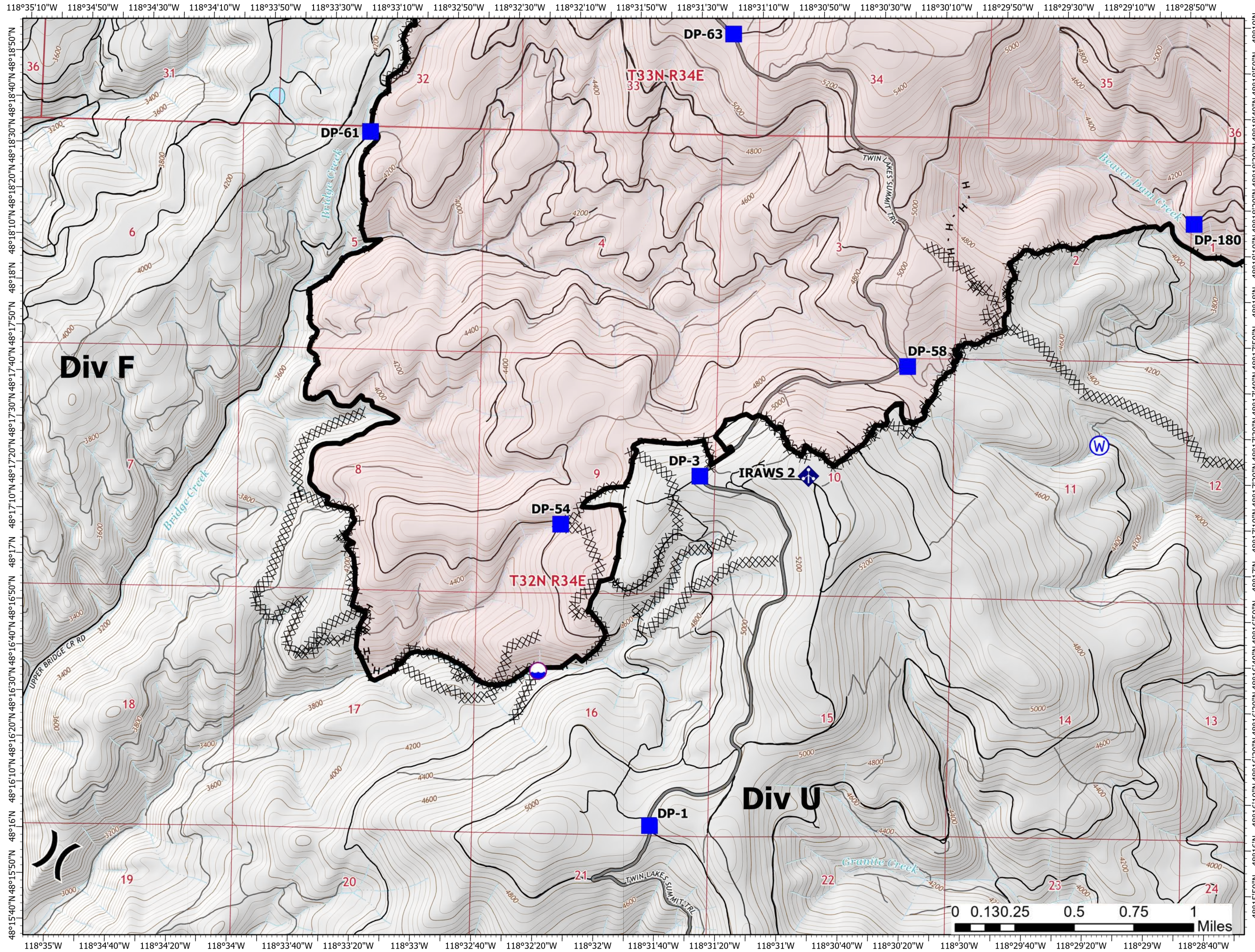
45,673 Acres
on 08/27/2021 at 2100

August 28, 2021



Page 15 of 16

- Dip Site
- Division Break
- Drop Point
- Mobile Weather Unit
- Water Source
- Completed Dozer Line
- Completed Hand Line
- Completed Road as Line
- Contained Line
- Fire Perimeter
- State or Territory
- Main Route - Unimproved
- Local Road
- 4WD
- County or Equivalent
- Driveable
- Not Driveable



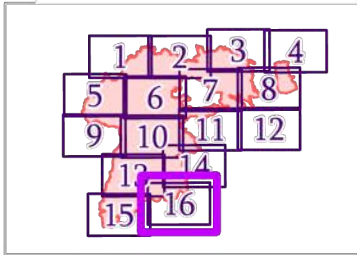
IAP MAP

Summit Trail

WA-COA-200087

45,673 Acres
on 08/27/2021 at 2100

August 28, 2021



Page 16 of 16

- Drop Point
- ✕ Closure
- Lookout
- Hot Spot - Spot Fire
- Water Development or Draft Site
- Dozer Push
- Repeater
- Water Source
- Completed Dozer Line
- Completed Hand Line
- Completed Road as Line
- Retardant Drop
- Contained Line
- Fire Perimeter
- State or Territory
- Main Route - Improved
- Local Road
- County or Equivalent
- Driveable
- Not Driveable

