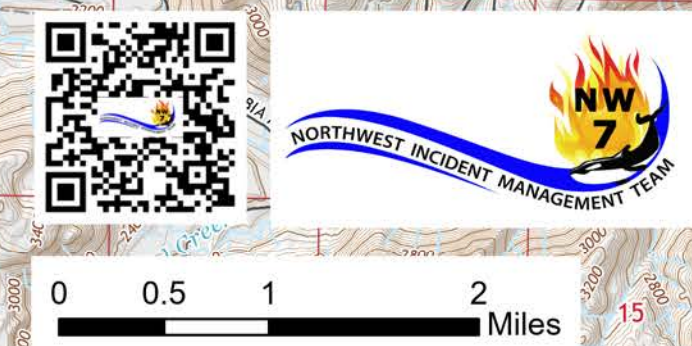
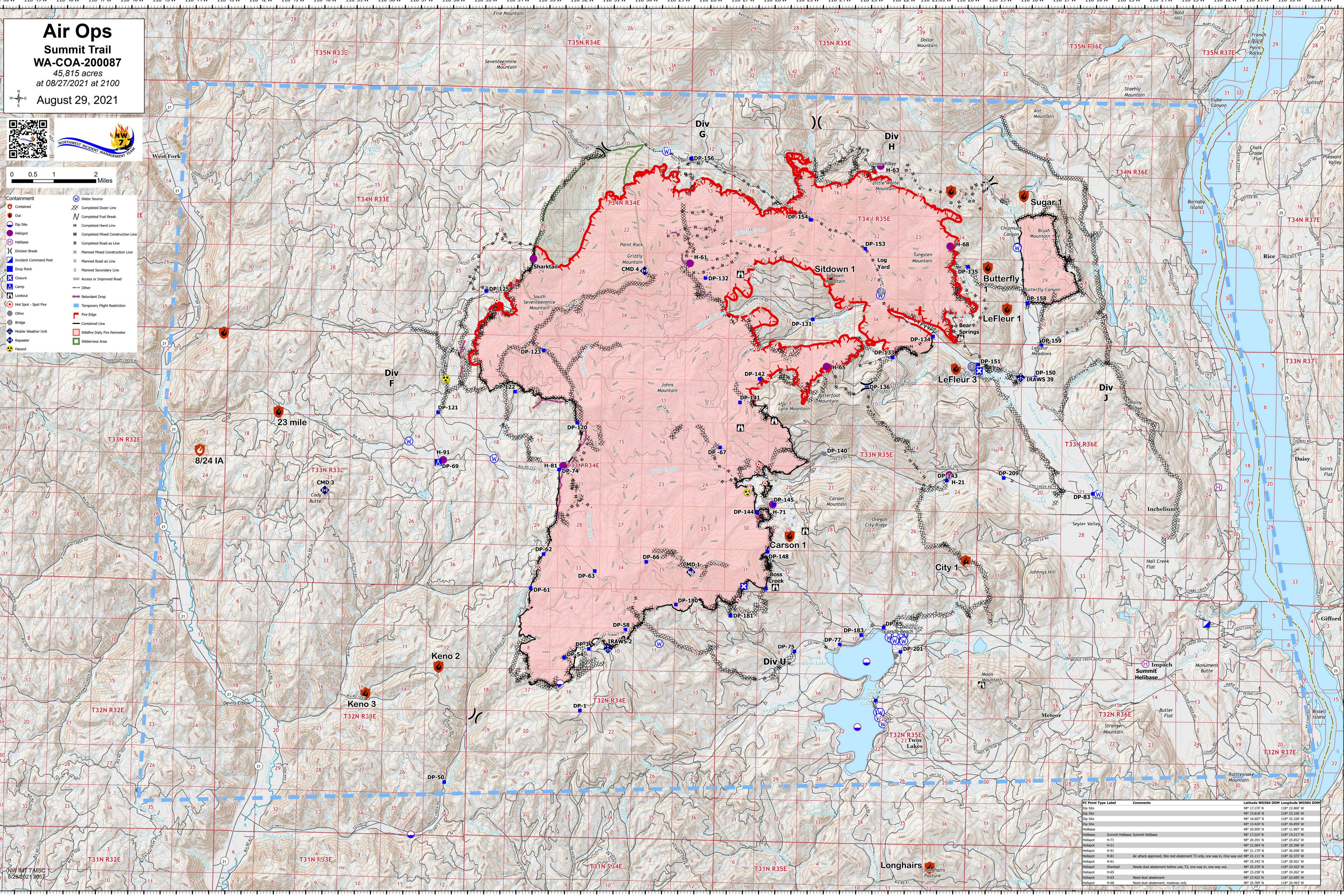


Air Ops
Summit Trail
WA-COA-200087
 45,815 acres
 at 08/27/2021 at 2100
 August 29, 2021



- 0 0.5 1 2 Miles
- | | |
|---|--|
| <ul style="list-style-type: none"> Containment Out Dip Site Helibase Division Break Incident Command Post Drop Point Closure Camp Lookout Hot Spot - Spot Fire Other Bridge Mobile Weather Unit Repeater Hazard | <ul style="list-style-type: none"> Water Source Completed Dozer Line Completed Fuel Break Completed Hand Line Completed Mixed Construction Line Completed Road as Line Planned Mixed Construction Line Planned Road as Line Planned Secondary Line Access or Improved Road Other Retardant Drop Temporary Flight Restriction Fire Edge Contained Line Wildfire Daily Fire Perimeter Wilderness Area |
|---|--|



NW IM 17 MSC
 8/28/2021 2052

FC Point Type Label	Comments	Latitude WGS84 DDM	Longitude WGS84 DDM
Dip Site		48° 15.818' N	118° 23.106' W
Dip Site		48° 16.607' N	118° 32.328' W
Dip Site		48° 17.400' N	118° 38.909' W
Dip Site		48° 20.902' N	118° 11.987' W
Helibase	Summit Helibase Summit Helibase	48° 17.224' N	118° 14.217' W
Helibase	H-71	48° 20.391' N	118° 25.852' W
Helibase	H-72	48° 23.664' N	118° 28.398' W
Helibase	H-91	48° 21.179' N	118° 36.098' W
Helibase	H-81	Air attack approved, Site need abatement T3 only, one way out	48° 21.111' N 118° 32.372' W
Helibase	H-61		48° 25.342' N 118° 26.561' W
Helibase	H-62	Needs dust abatement before use, T2, one way in, one way out.	48° 23.664' N 118° 38.909' W
Helibase	H-65		48° 23.258' N 118° 24.262' W
Helibase	H-63	Need dust abatement	48° 27.422' N 118° 22.695' W
Helibase	H-68	Need dust abatement, medicare only	48° 25.789' N 118° 26.493' W