

Operations Map

Summit Trail

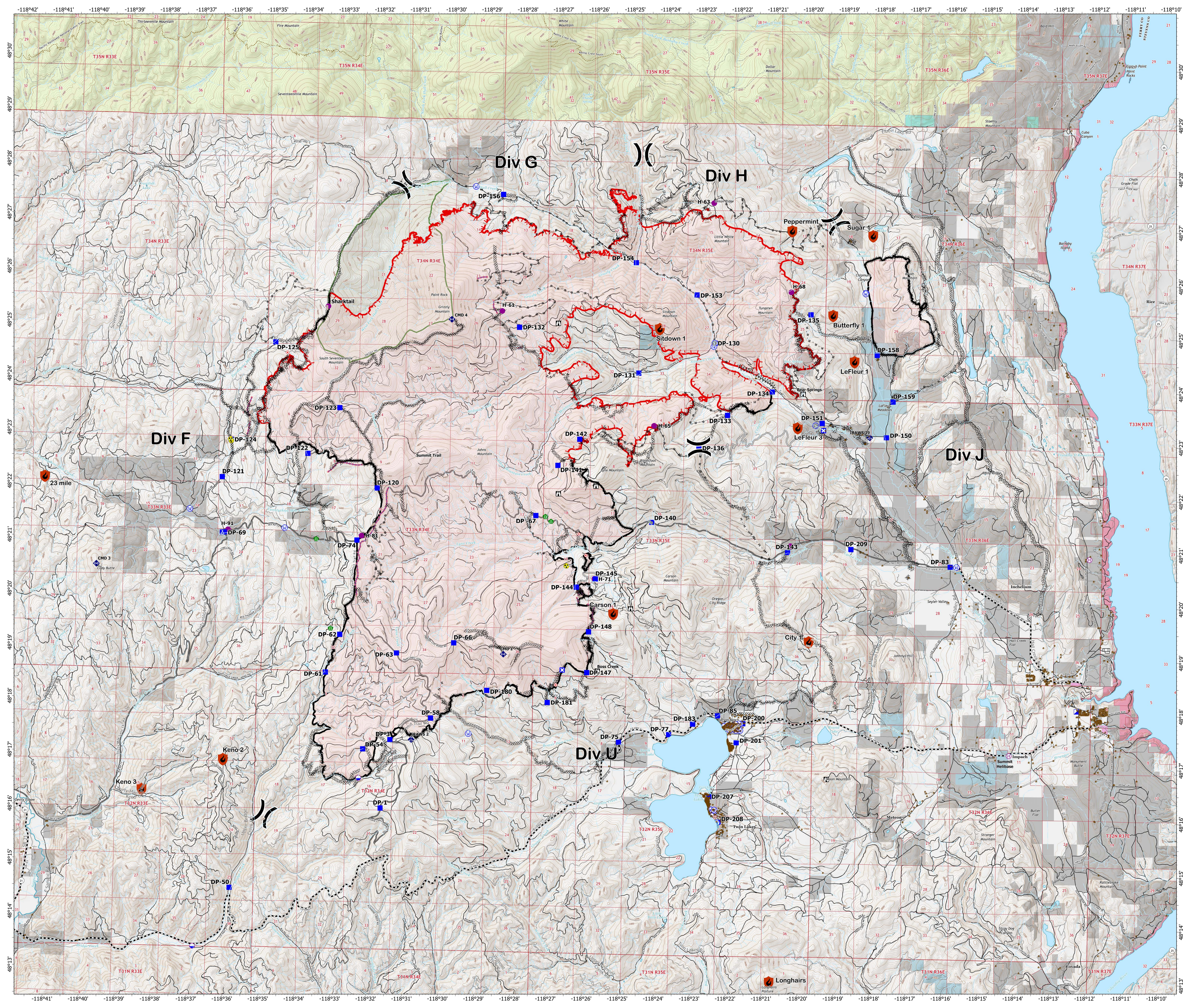
WA-COA-200087

August 29, 2021



45,815 acres on 08/27/2021 at 2100

- New Starts**
- Out
 - Dip Site
 - Helispot
 - Helibase
 - Division Break
 - Incident Command Post
 - Drop Point
 - Closure
 - Camp
 - Lookout
 - Hot Spot - Spot Fire
 - Comm Tower
 - Bridge
 - Road Repair
 - Mobile Weather Unit
 - Repeater
 - Hazard
 - Water Source
 - Completed Dozer Line
 - Completed Fuel Break
 - Completed Hand Line
 - Completed Mixed Construction Line
 - Completed Road as Line
 - Planned Mixed Construction Line
 - Planned Road as Line
 - Planned Secondary Line
 - Access or Improved Road
 - Other
 - Retardant Drop
 - Fire Edge
 - Contained Line
 - Wildfire Daily Fire Perimeter
 - Main Route - Improved
 - Main Route - Unimproved
 - Local Road
 - 4WD
 - Trail
 - Not Driveable
 - Wilderness Area
 - Private
 - Colville Confederated Tribes
 - Ferry County
 - Indian Allotment Trust Lands
 - National Park Service
 - Open water and lakes
 - US Bureau of Reclamation
 - US Forest Service
 - WA DNR
 - Structures
- Section**
- First Division Type Description**
- Section Protracted
 - Section



1:38,000

0 1/4 1/2 3/4 1 Miles