

IAP MAP

Summit Trail

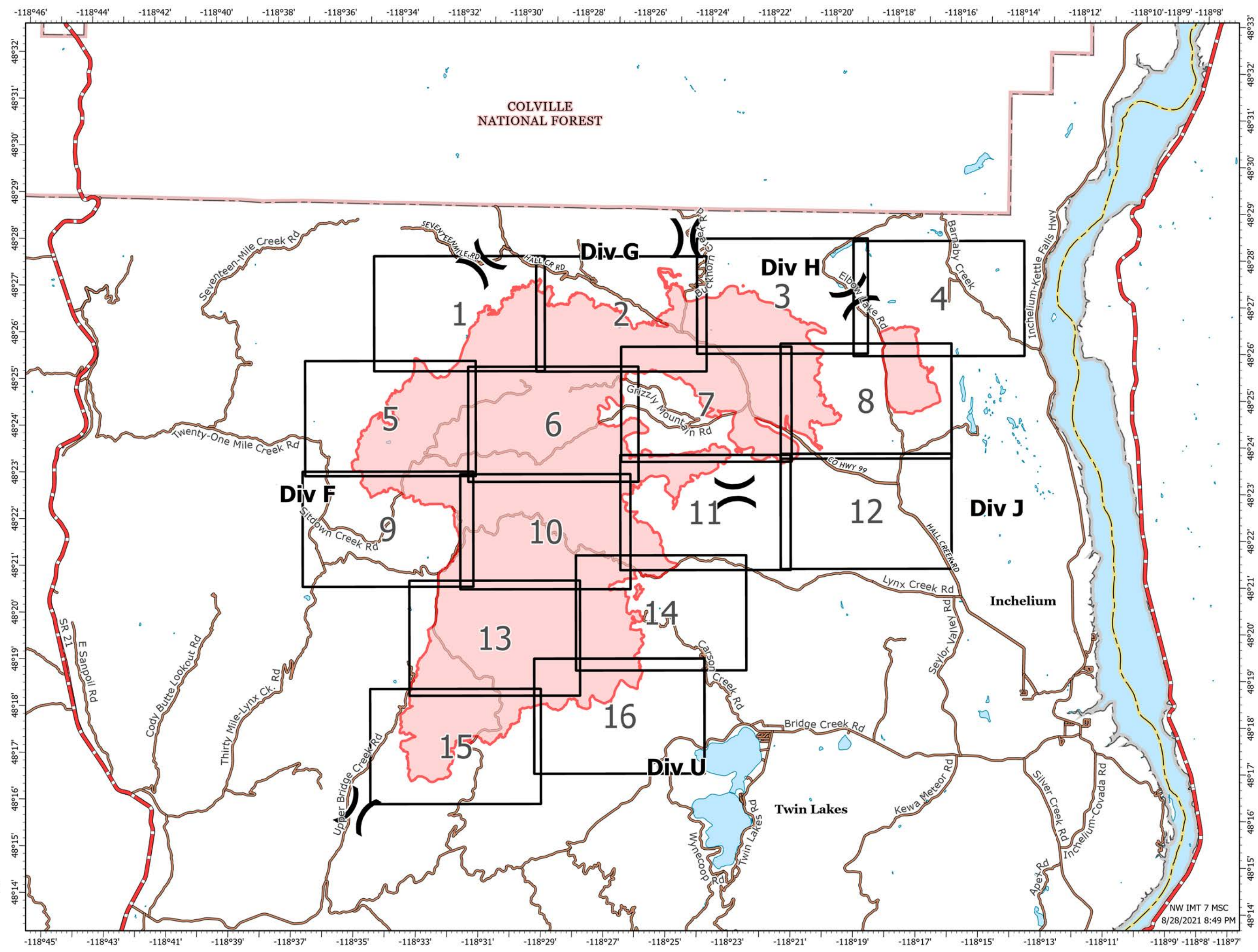
WA-COA-200087

45,815 Acres
on 08/27/2021 at 2100

August 29, 2021



- (X) Division Break
- ▭ Fire Perimeter
- Additional Rd Selections
- Comprehensive Roads Hosted
- Owner
- BIA
- City
- County
- Other Drive-able
- Other Not Drive-able
- Private
- ▭ State
- ▭ Tribe
- ▭ Highway



1:140,000
NAD 1983
UTM 11N

NW IMT 7 MSC
8/28/2021 8:49 PM

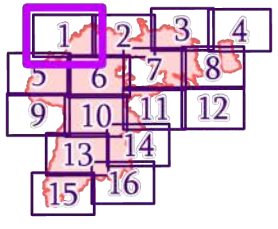
IAP MAP

Summit Trail

WA-COA-200087

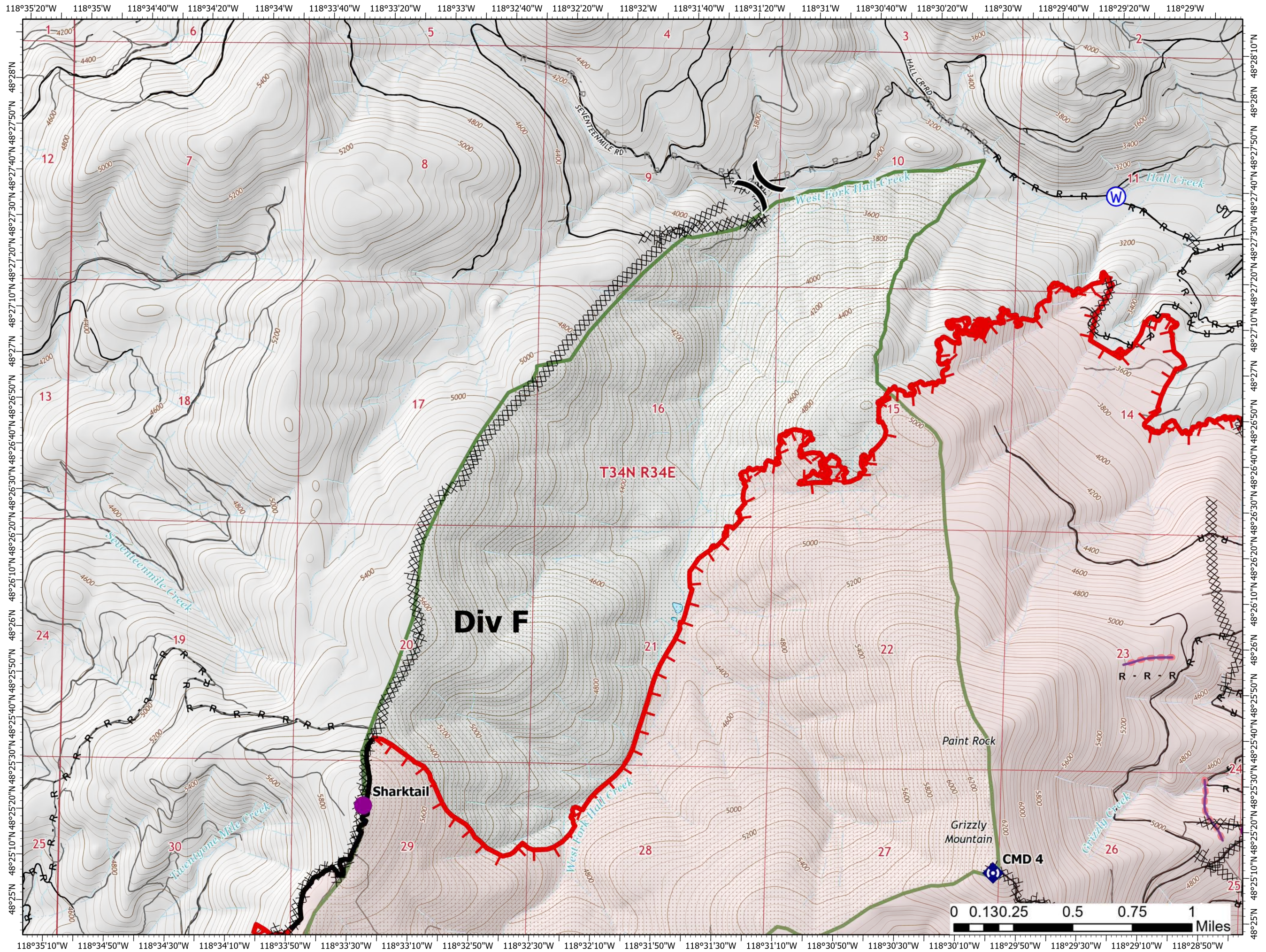
45,815 Acres
on 08/27/2021 at 2100

August 29, 2021



Page 1 of 16

- Helispot
-) Division Break
- Drop Point
- ◆ Repeater
- ⊙ Water Source
- ⊗ Completed Dozer Line
- R Completed Road as Line
- R Planned Road as Line
- ⊕ Retardant Drop
- ┌ Fire Edge
- ▬ Contained Line
- ▭ Fire Perimeter
- ▭ State or Territory
- Local Road
- ▭ County or Equivalent
- ▭ Wilderness Area
- Driveable
- Not Driveable



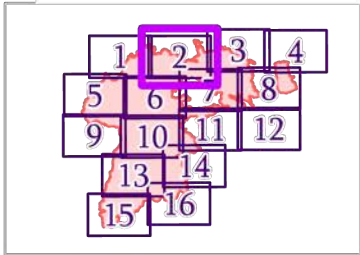
IAP MAP

Summit Trail

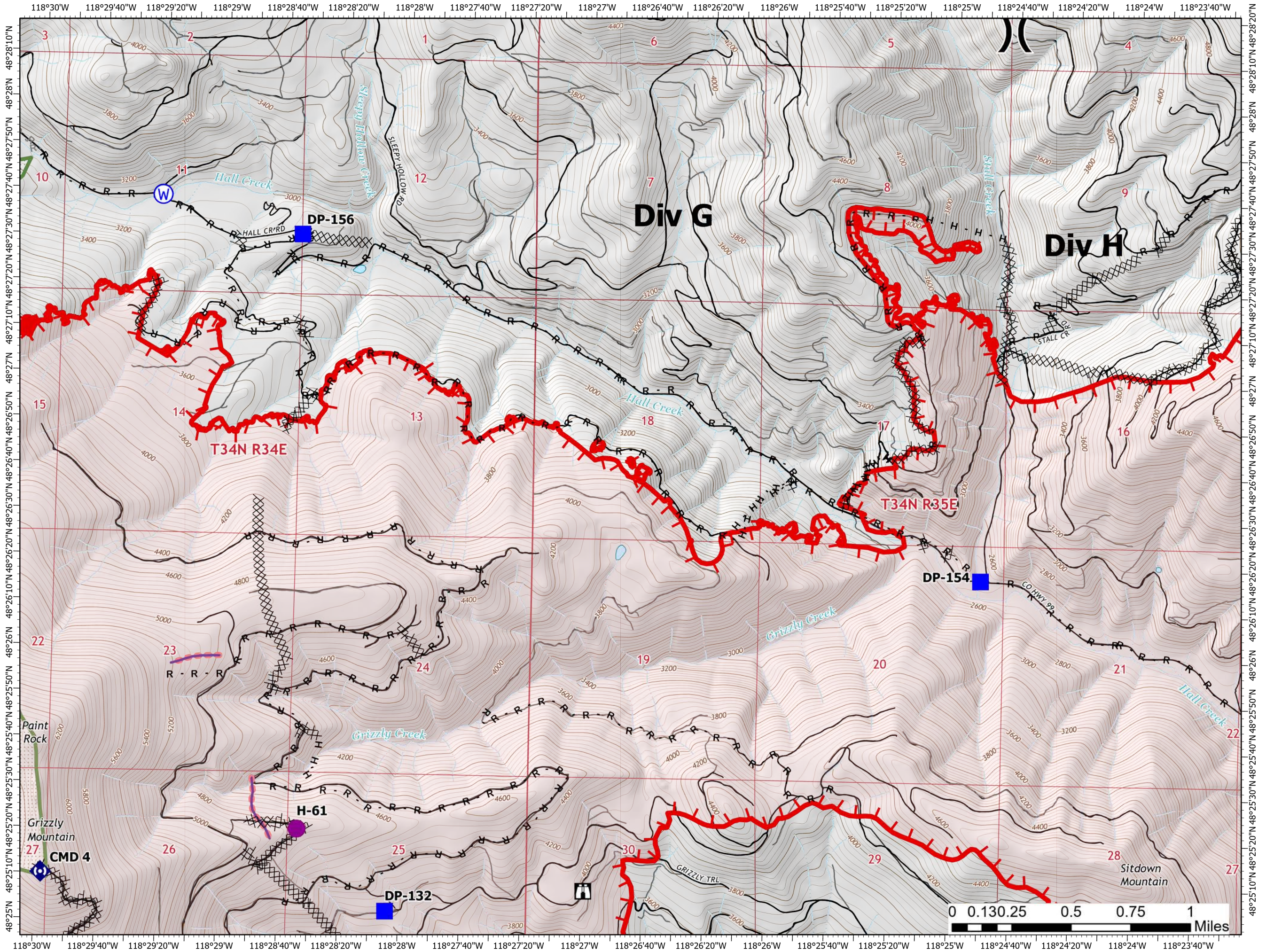
WA-COA-200087

45,815 Acres
on 08/27/2021 at 2100

August 29, 2021



- Page 2 of 16
- Helispot
 -) Division Break
 - Drop Point
 - H Lookout
 - W Repeater
 - W Water Source
 - XX Completed Dozer Line
 - H Completed Hand Line
 - R Completed Road as Line
 - R Planned Road as Line
 - Retardant Drop
 - Fire Edge
 - Fire Perimeter
 - State or Territory
 - Local Road
 - - - 4WD
 - County or Equivalent
 - Wilderness Area
 - Driveable
 - - - Not Driveable



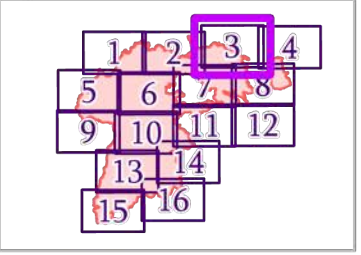
IAP MAP

Summit Trail

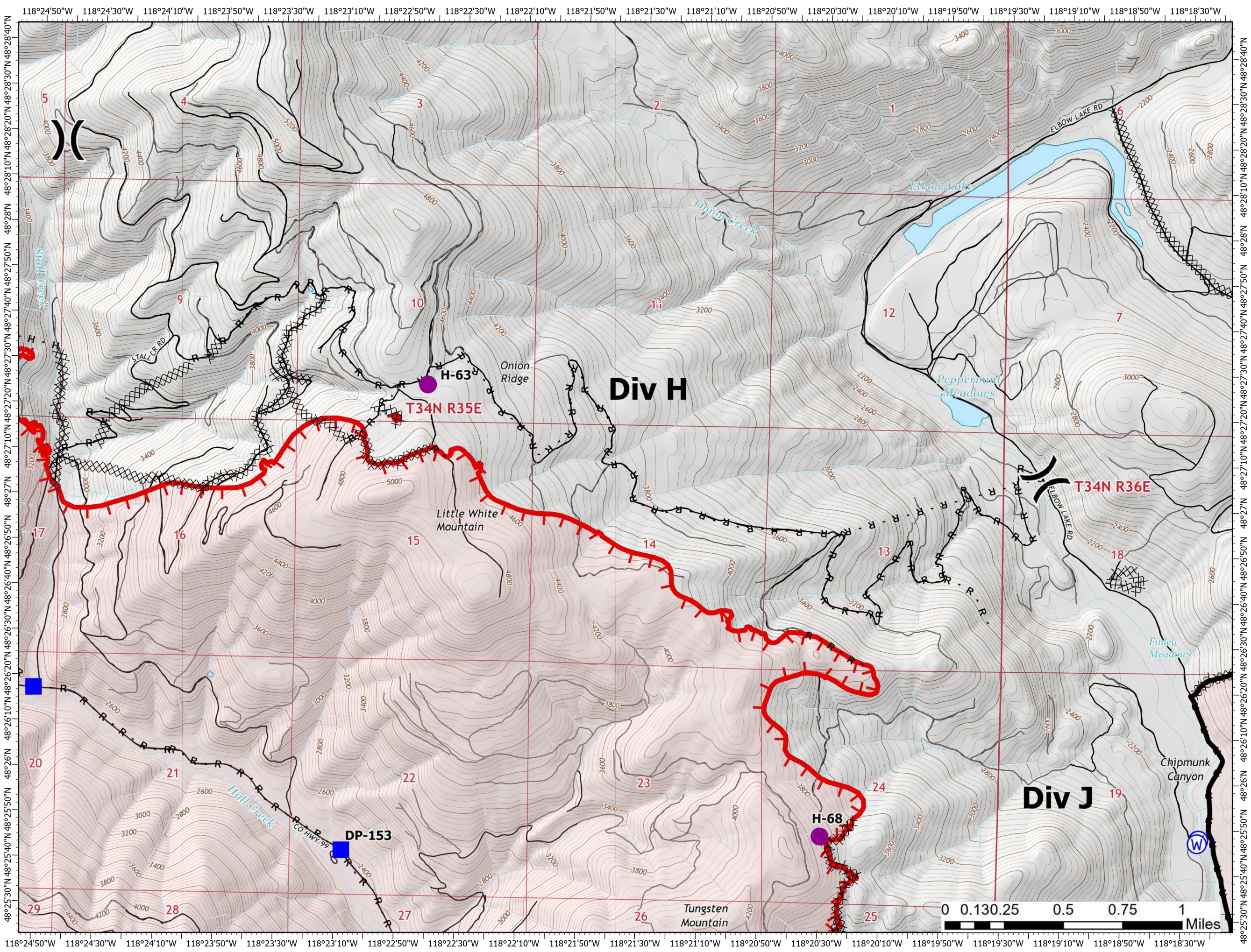
WA-COA-200087

45,815 Acres
on 08/27/2021 at 2100

August 29, 2021



- Helispot
- Division Break
- Drop Point
- Water Source
- Completed Dozer Line
- Completed Hand Line
- Completed Road as Line
- Fire Edge
- Contained Line
- Fire Perimeter
- State or Territory
- Local Road
- 4WD
- County or Equivalent
- Driveable
- Not Driveable



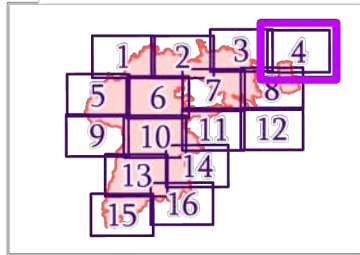
IAP MAP

Summit Trail

WA-COA-200087

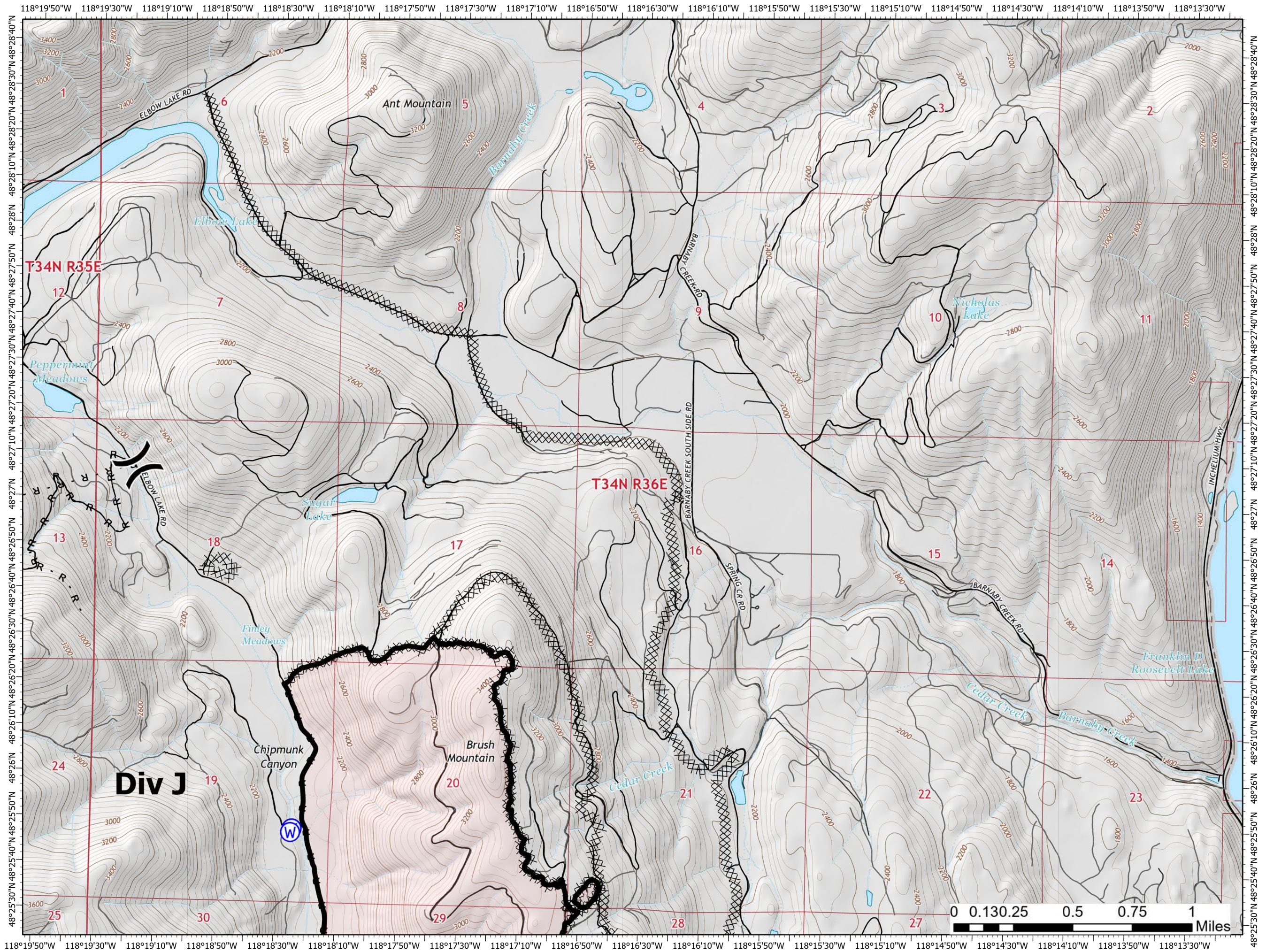
45,815 Acres
on 08/27/2021 at 2100

August 29, 2021



Page 4 of 16

- Division Break
- Drop Point
- Water Source
- Completed Dozer Line
- Completed Road as Line
- Contained Line
- Fire Perimeter
- State or Territory
- Local Road
- County or Equivalent
- Driveable
- Not Driveable



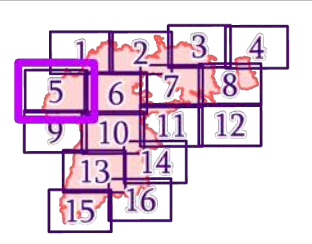
IAP MAP

Summit Trail

WA-COA-200087

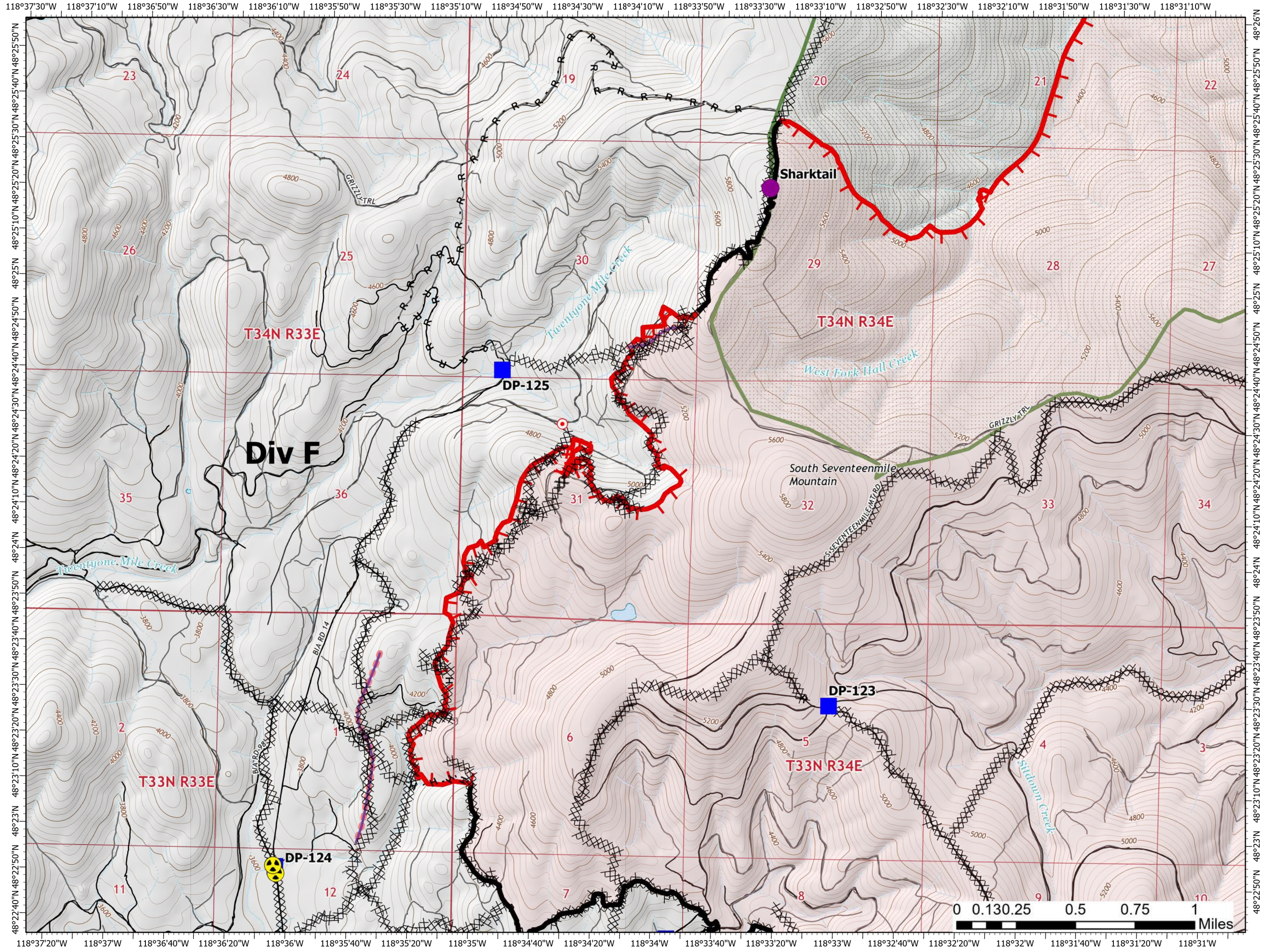
45,815 Acres
on 08/27/2021 at 2100

August 29, 2021



- Helispot
- Drop Point
- Hot Spot - Spot Fire
- ⚠ Hazard
- ⊗ Completed Dozer Line
- H Completed Hand Line
- R Completed Road as Line
- R Planned Road as Line
- Retardant Drop
- Fire Edge
- Contained Line
- Fire Perimeter
- State or Territory
- Local Road
- County or Equivalent
- Wilderness Area
- Driveable
- Not Driveable

Page 5 of 16



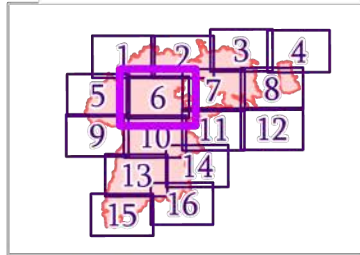
IAP MAP

Summit Trail

WA-COA-200087

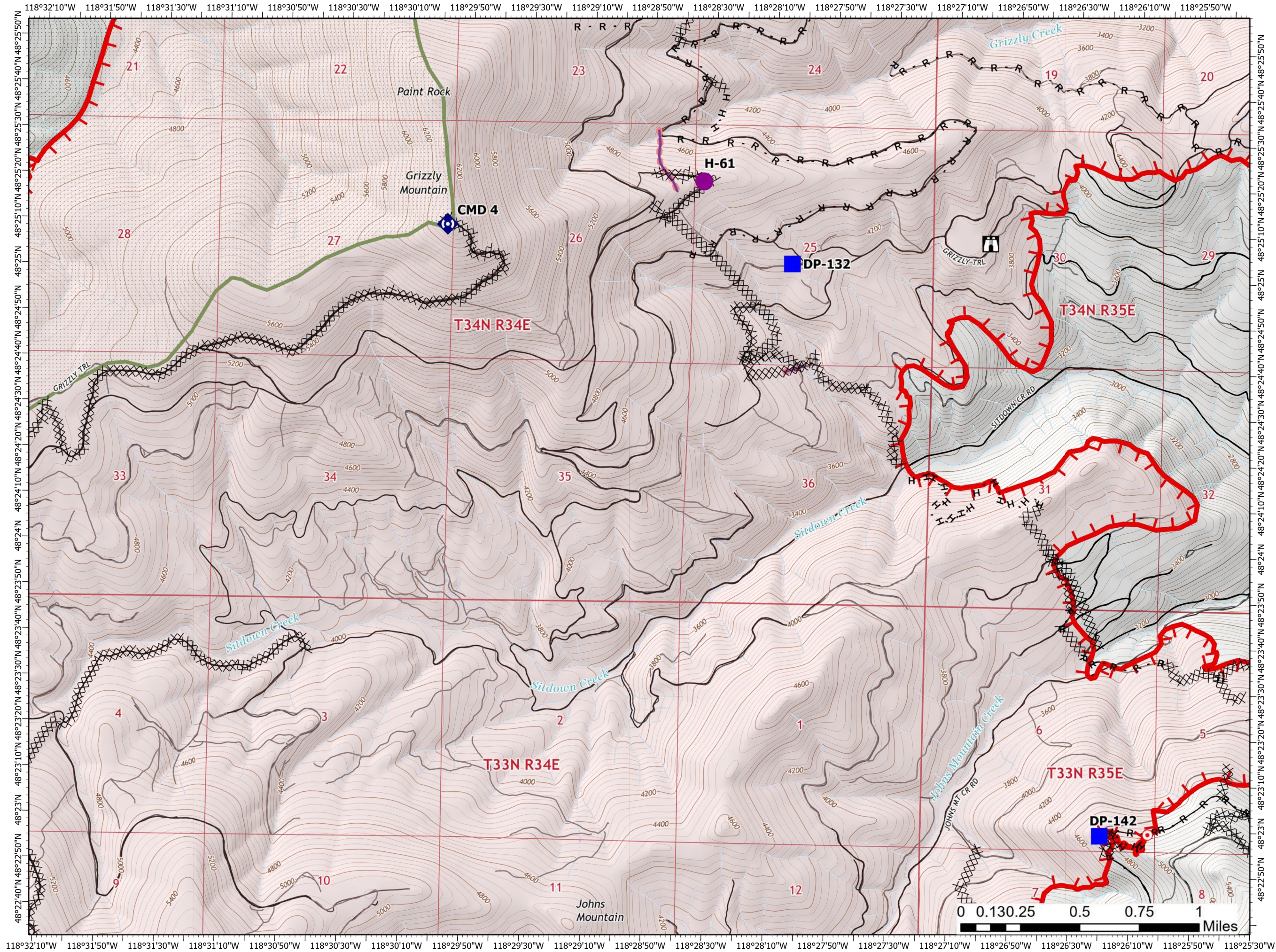
45,815 Acres
on 08/27/2021 at 2100

August 29, 2021



Page 6 of 16

- Helispot
- Drop Point
- Lookout
- Hot Spot - Spot Fire
- Repeater
- Completed Dozer Line
- Completed Hand Line
- Completed Road as Line
- Retardant Drop
- Fire Edge
- Fire Perimeter
- State or Territory
- Local Road
- County or Equivalent
- Wilderness Area
- Driveable
- Not Driveable



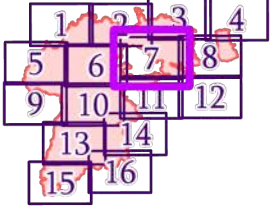
IAP MAP

Summit Trail

WA-COA-200087

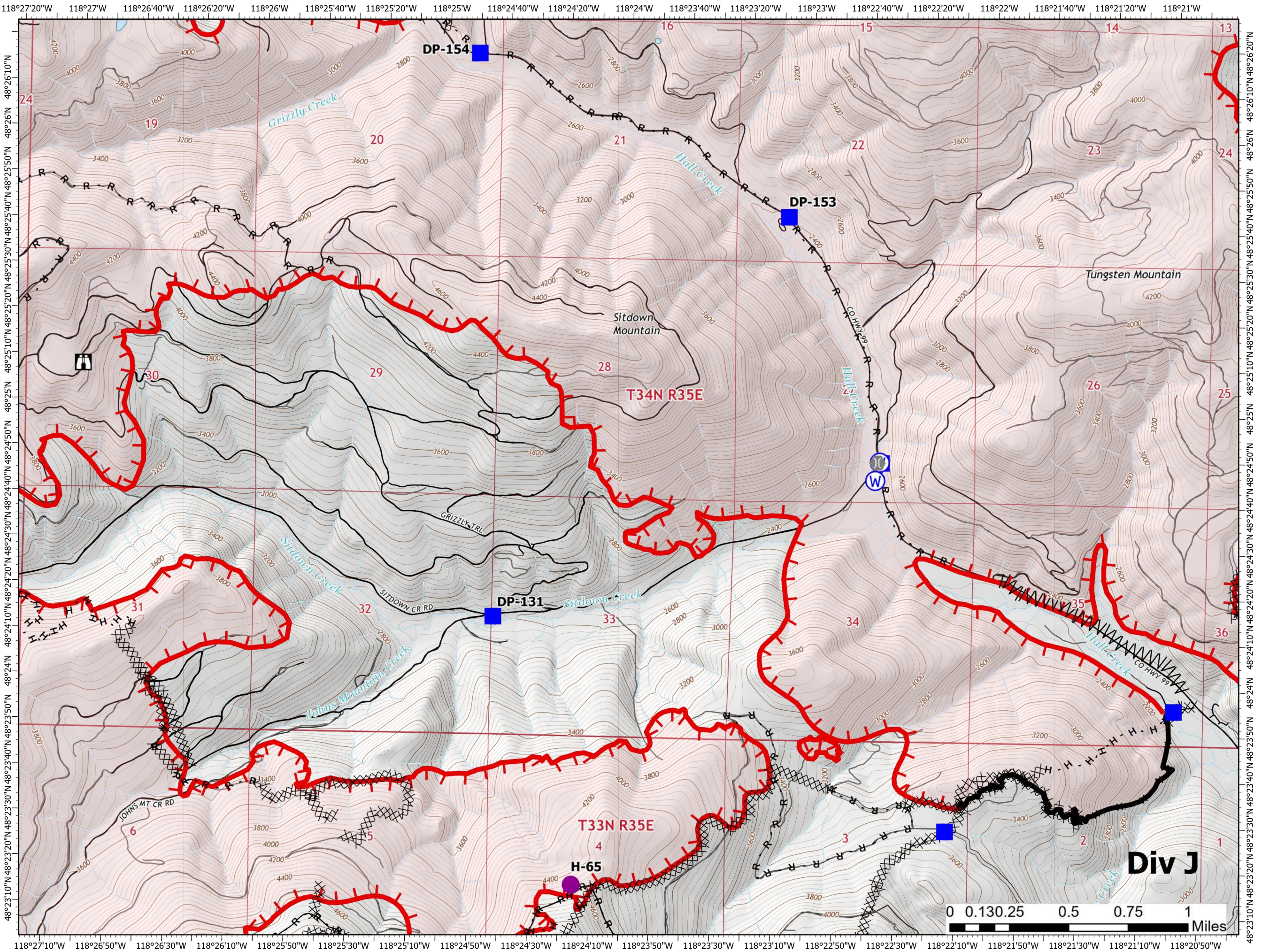
45,815 Acres
on 08/27/2021 at 2100

August 29, 2021



Page 7 of 16

- Helispot
- Drop Point
- Lookout
- Hot Spot - Spot Fire
- Bridge
- Water Source
- Completed Dozer Line
- Completed Fuel Break
- Completed Hand Line
- Completed Road as Line
- Access or Improved Road
- Fire Edge
- Contained Line
- Fire Perimeter
- State or Territory
- Local Road
- County or Equivalent
- Driveable
- Not Driveable



Div J



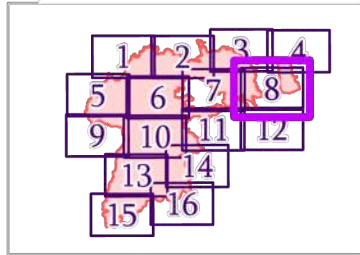
IAP MAP

Summit Trail

WA-COA-200087

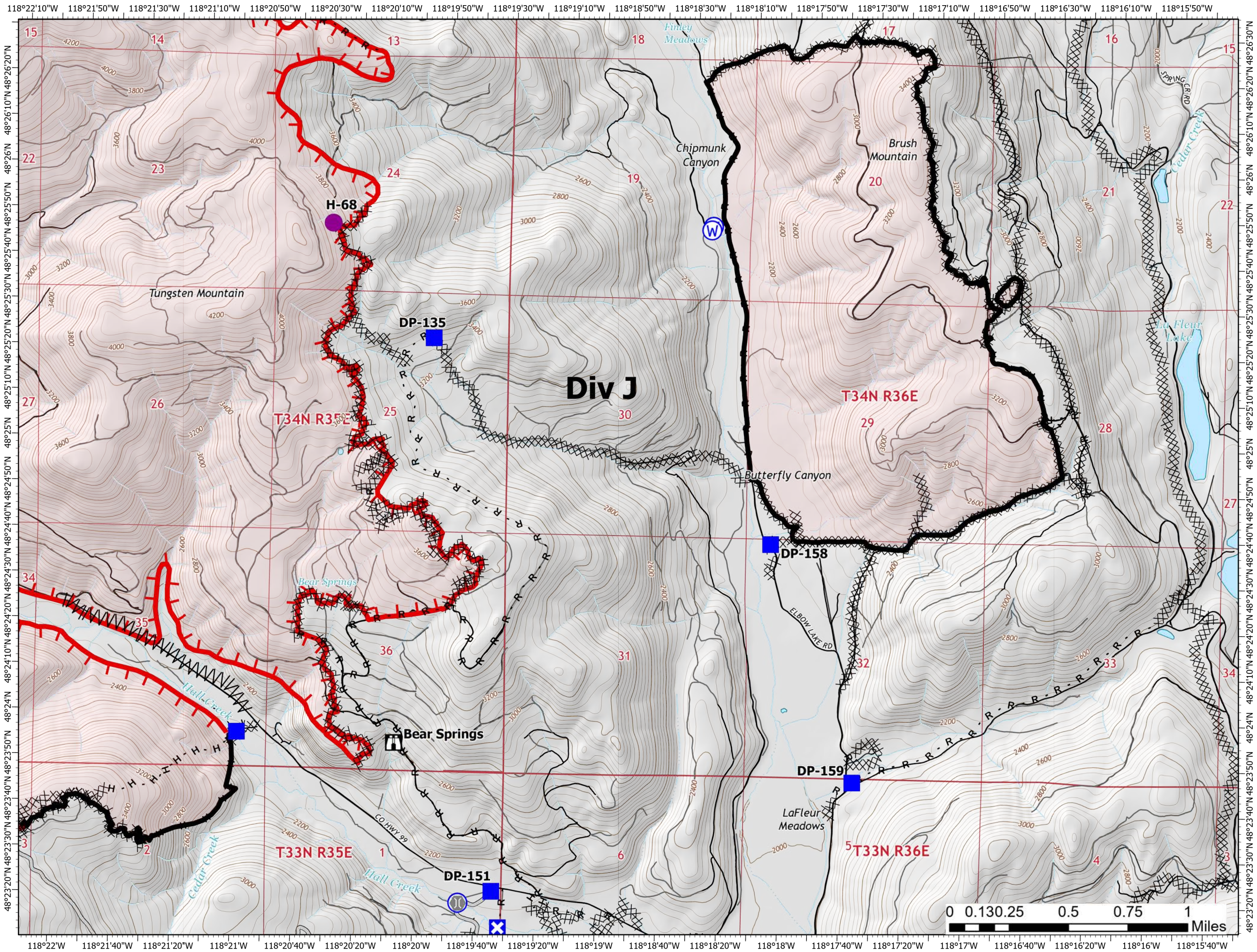
45,815 Acres
on 08/27/2021 at 2100

August 29, 2021



Page 8 of 16

- Helispot
- Drop Point
- ⊗ Closure
- 🏠 Lookout
- 🌉 Bridge
- ⊙ Water Source
- ⊗ Completed Dozer Line
- ⌄ Completed Fuel Break
- H Completed Hand Line
- R Completed Road as Line
- Access or Improved Road
- ┌ Fire Edge
- Contained Line
- Fire Perimeter
- State or Territory
- Local Road
- - - 4WD
- County or Equivalent
- Driveable
- - - Not Driveable



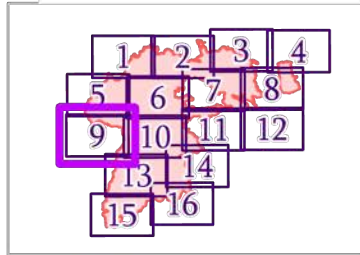
IAP MAP

Summit Trail

WA-COA-200087

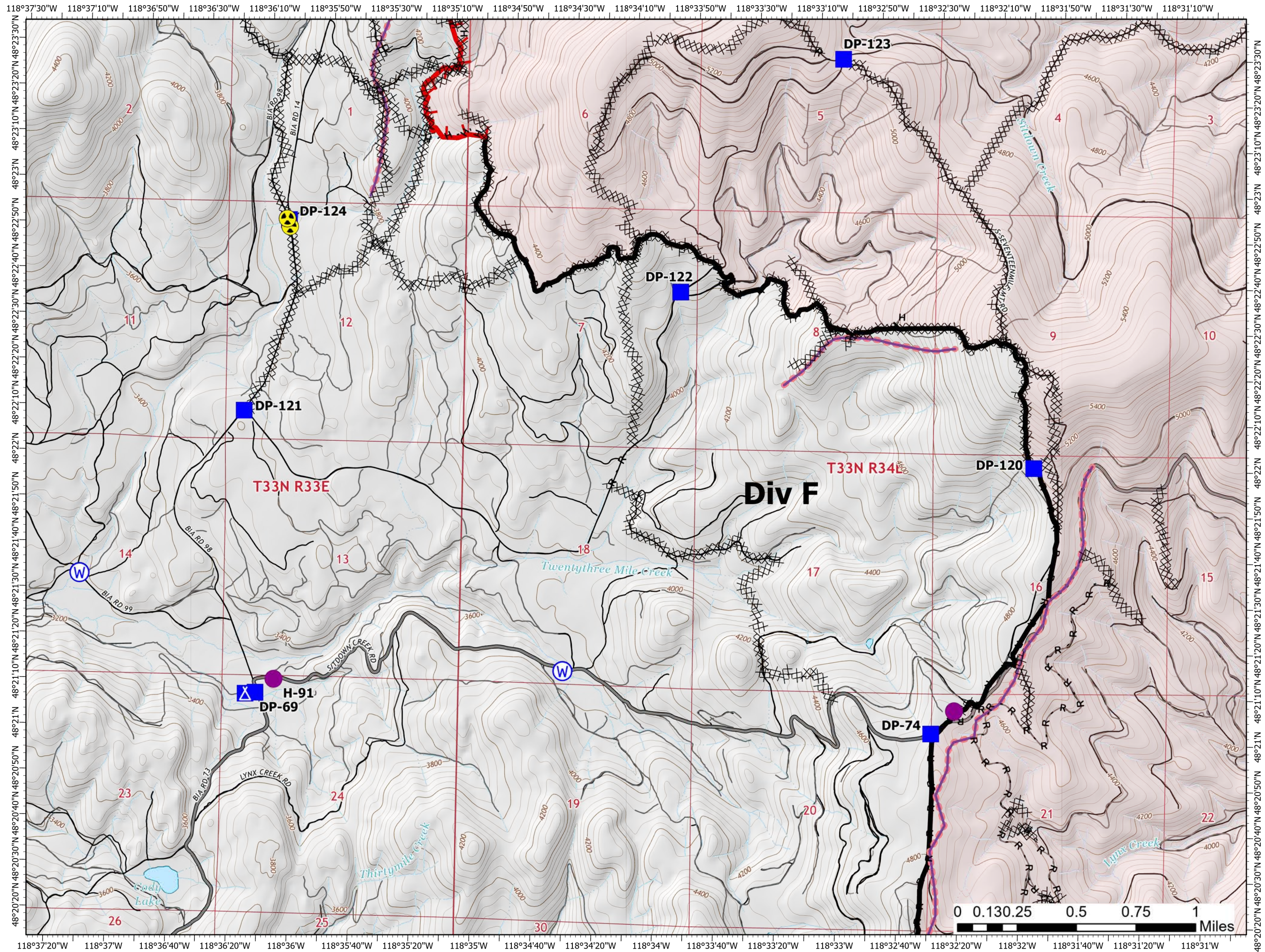
45,815 Acres
on 08/27/2021 at 2100

August 29, 2021



Page 9 of 16

- Helispot
- Drop Point
- ▲ Camp
- ⚠ Hazard
- Ⓜ Water Source
- ⊗ Completed Dozer Line
- H Completed Hand Line
- R Completed Road as Line
- Retardant Drop
- ┌ Fire Edge
- Contained Line
- Fire Perimeter
- State or Territory
- Main Route - Unimproved
- Local Road
- - - 4WD
- County or Equivalent
- Driveable
- Not Driveable



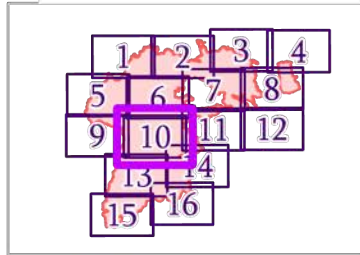
IAP MAP

Summit Trail

WA-COA-200087

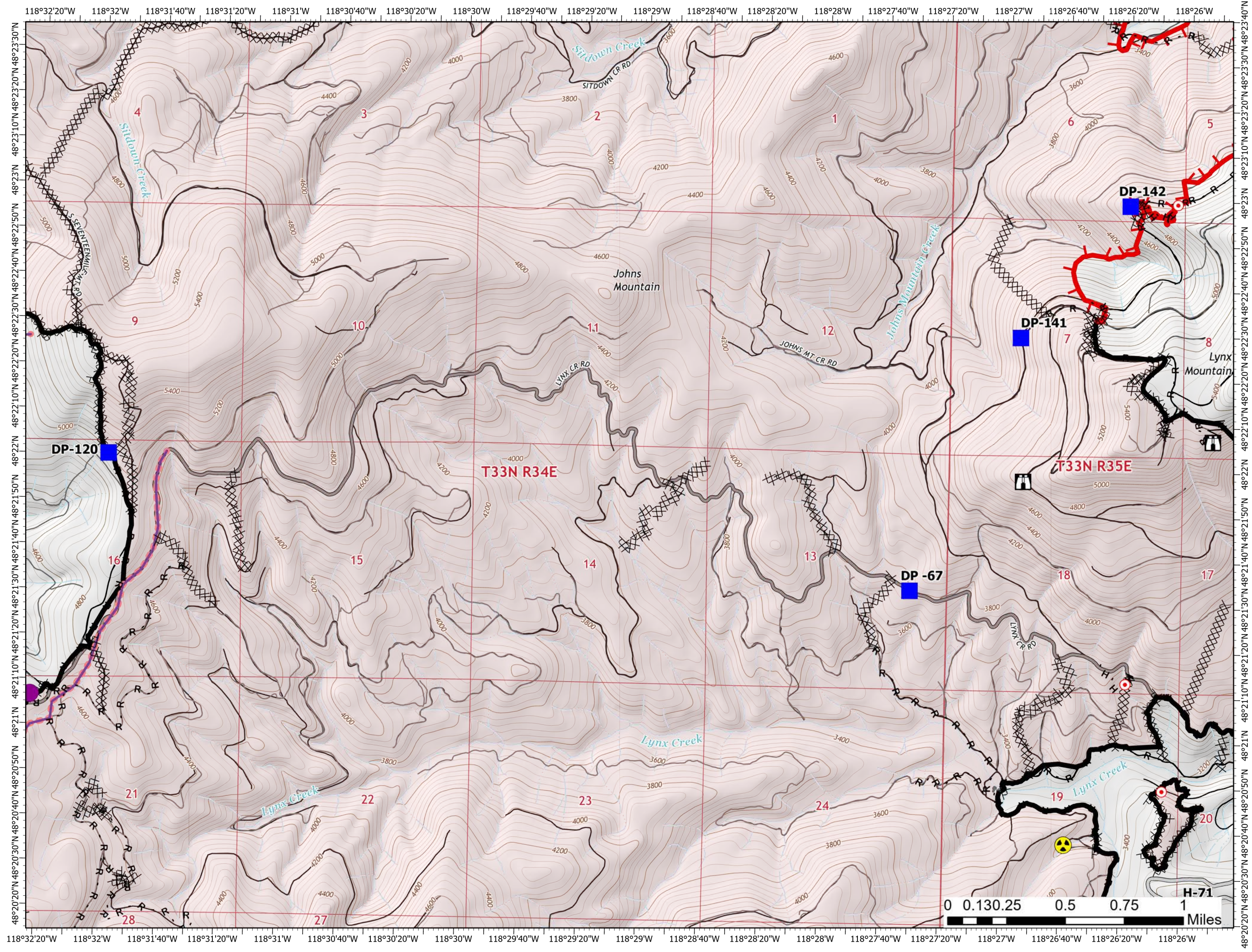
45,815 Acres
on 08/27/2021 at 2100

August 29, 2021



Page 10 of 16

- Helispot
- Drop Point
- Lookout
- Hot Spot - Spot Fire
- Hazard
- Completed Dozer Line
- Completed Fuel Break
- Completed Hand Line
- Completed Mixed Construction Line
- Completed Road as Line
- Planned Secondary Line
- Access or Improved Road
- Other
- Retardant Drop
- Fire Edge
- Contained Line
- Fire Perimeter
- State or Territory
- Main Route - Unimproved
- Local Road
- 4WD
- County or Equivalent
- Driveable
- Not Driveable



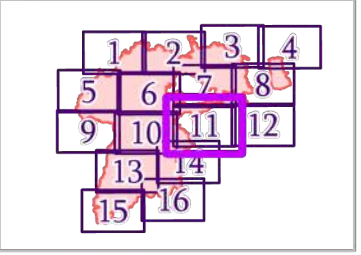
IAP MAP

Summit Trail

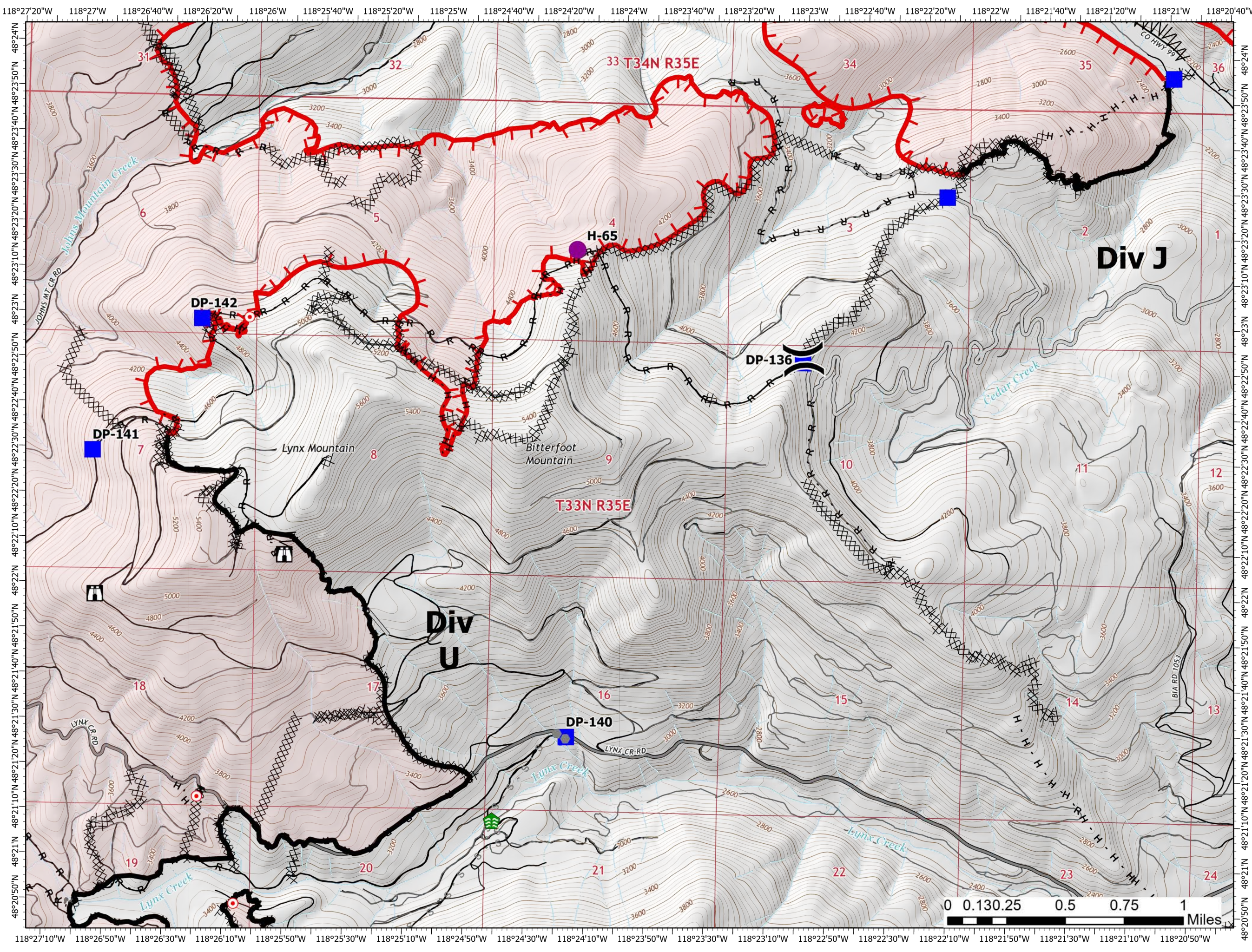
WA-COA-200087

45,815 Acres
on 08/27/2021 at 2100

August 29, 2021



- Helispot
-) Division Break
- Drop Point
- ⌘ Lookout
- Hot Spot - Spot Fire
- ⬤ Comm Tower
- Stream Crossing
- ⊗ Completed Dozer Line
- ∧ Completed Fuel Break
- H Completed Hand Line
- M Completed Mixed Construction Line
- R Completed Road as Line
- S Planned Secondary Line
- Access or Improved Road
- Other
- Fire Edge
- Contained Line
- Fire Perimeter
- State or Territory
- Main Route - Unimproved
- Local Road
- County or Equivalent
- Driveable
- Not Driveable



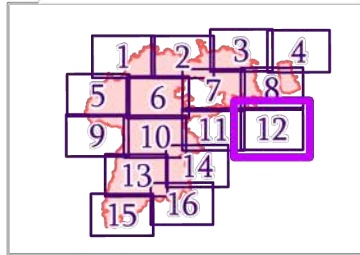
IAP MAP

Summit Trail

WA-COA-200087

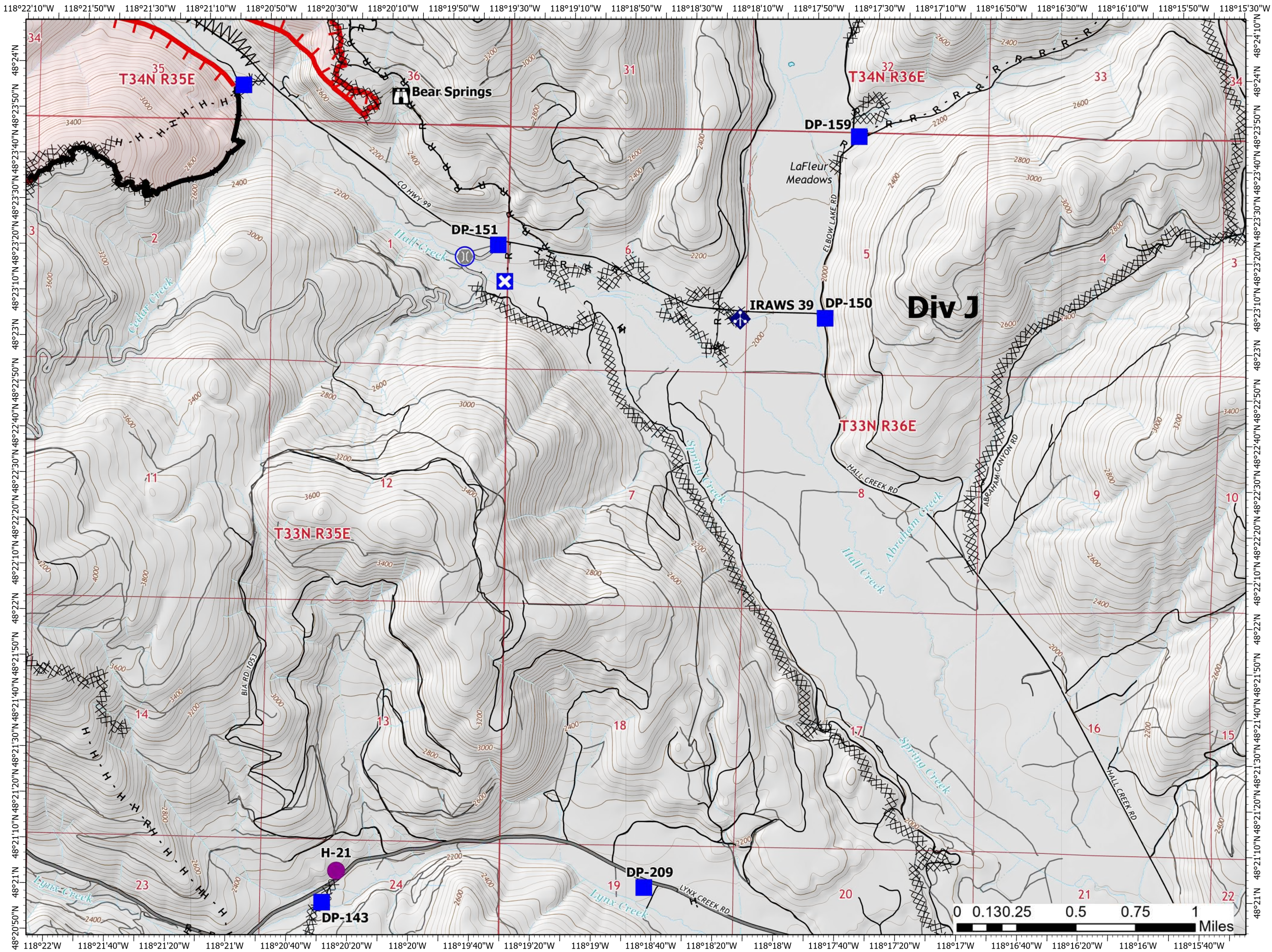
45,815 Acres
on 08/27/2021 at 2100

August 29, 2021



Page 12 of 16

- Helispot
- Drop Point
- ⊗ Closure
- Lookout
- Bridge
- Mobile Weather Unit
- Water Source
- Completed Dozer Line
- Completed Fuel Break
- Completed Hand Line
- Completed Road as Line
- Access or Improved Road
- Fire Edge
- Contained Line
- Fire Perimeter
- State or Territory
- Main Route - Unimproved
- Local Road
- 4WD
- County or Equivalent
- Driveable
- Not Driveable



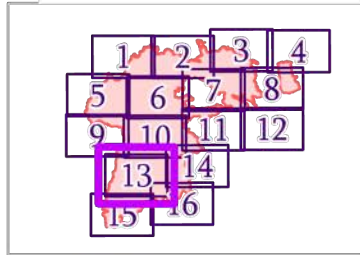
IAP MAP

Summit Trail

WA-COA-200087

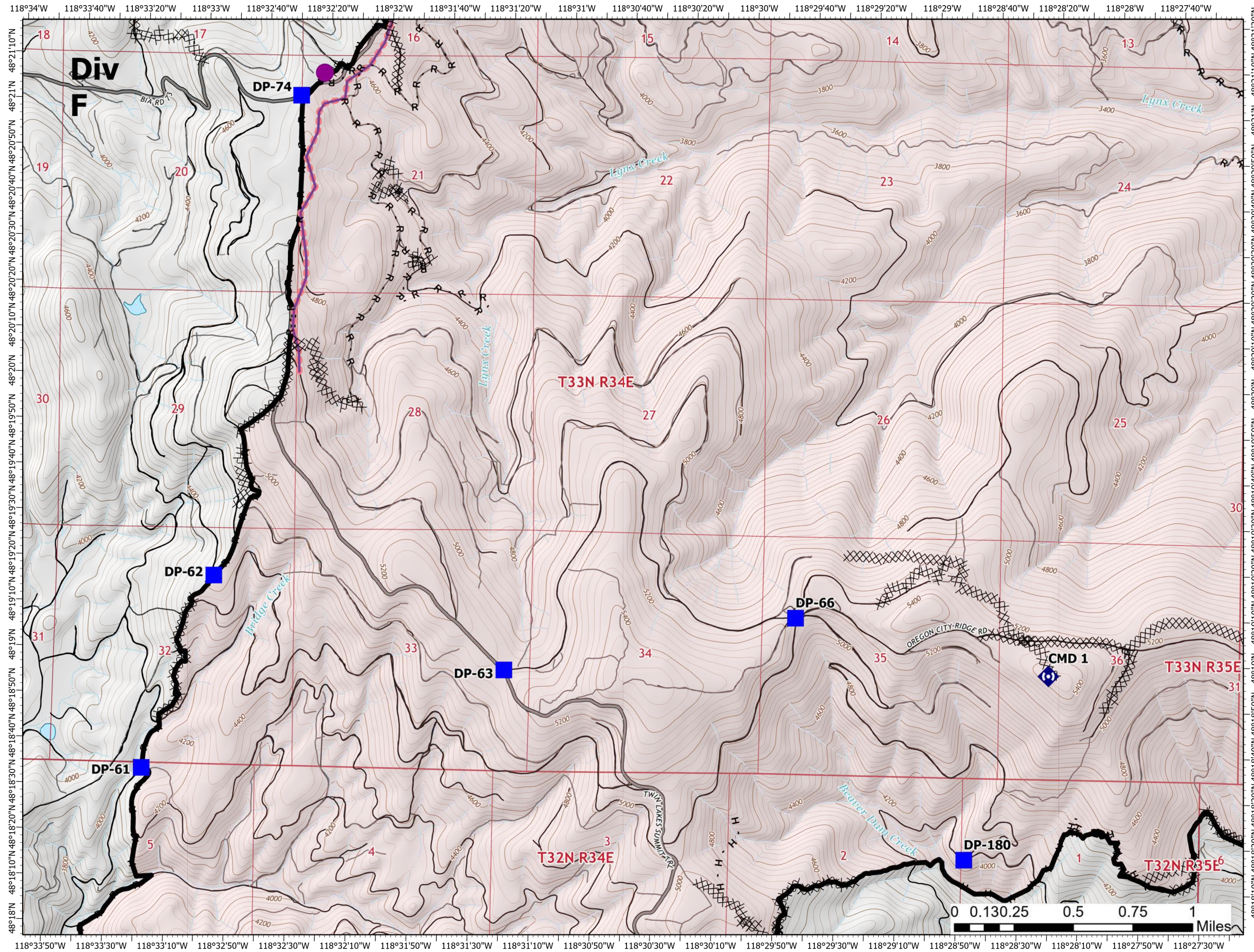
45,815 Acres
on 08/27/2021 at 2100

August 29, 2021



Page 13 of 16

- Helispot
- Drop Point
- ◆ Repeater
- ⊗ Completed Dozer Line
- H Completed Hand Line
- R Completed Road as Line
- Retardant Drop
- Contained Line
- Fire Perimeter
- State or Territory
- Main Route - Unimproved
- Local Road
- 4WD
- County or Equivalent
- Driveable
- Not Driveable



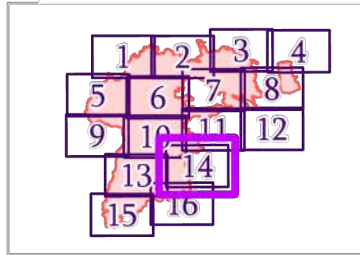
IAP MAP

Summit Trail

WA-COA-200087

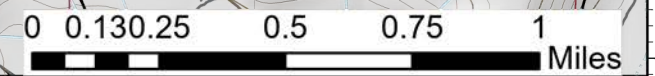
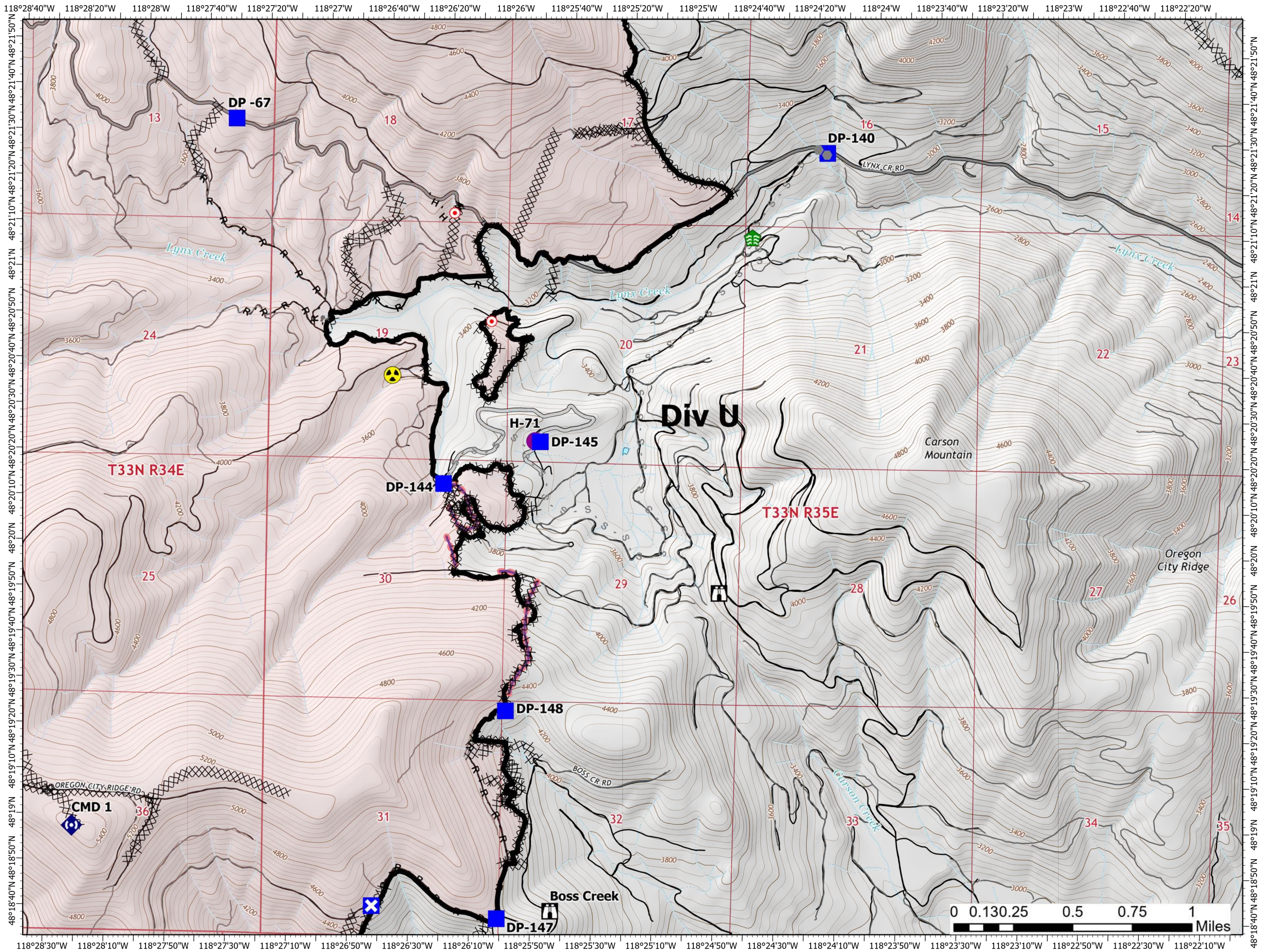
45,815 Acres
on 08/27/2021 at 2100

August 29, 2021



Page 14 of 16

- Helispot
- Drop Point
- ✕ Closure
- Lookout
- Hot Spot - Spot Fire
- Comm Tower
- Stream Crossing
- ◆ Repeater
- ☠ Hazard
- Completed Dozer Line
- Completed Hand Line
- Completed Mixed Construction Line
- Completed Road as Line
- Planned Secondary Line
- Access or Improved Road
- Other
- Retardant Drop
- Contained Line
- Fire Perimeter
- State or Territory
- Main Route - Unimproved
- Local Road
- County or Equivalent
- Driveable
- Not Driveable



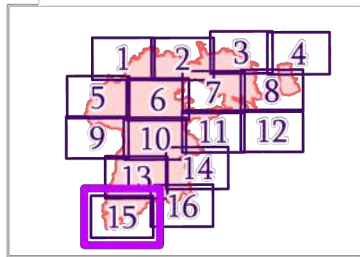
IAP MAP

Summit Trail

WA-COA-200087

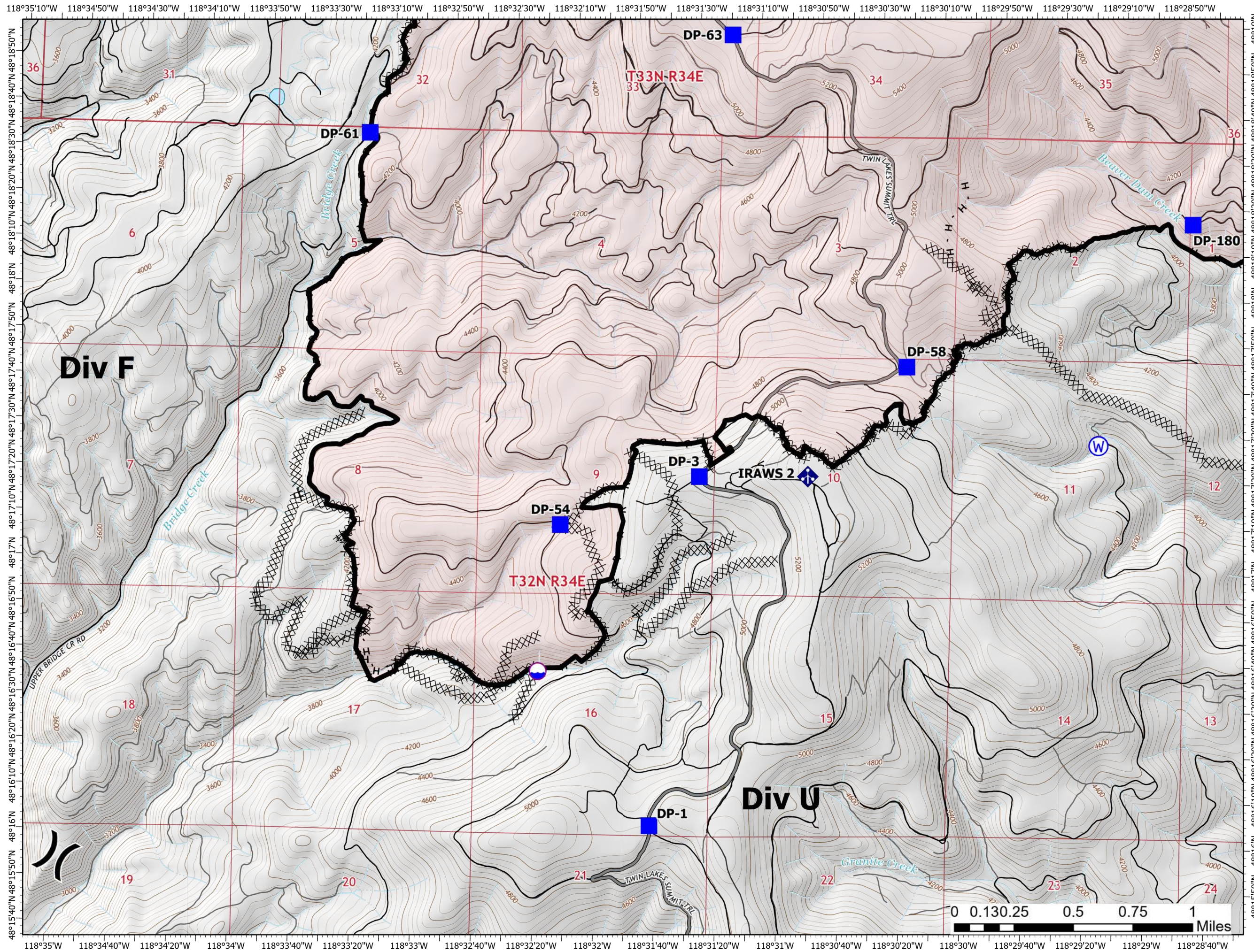
45,815 Acres
on 08/27/2021 at 2100

August 29, 2021



Page 15 of 16

- Dip Site
- Division Break
- Drop Point
- Mobile Weather Unit
- Water Source
- Completed Dozer Line
- Completed Hand Line
- Completed Road as Line
- Contained Line
- Fire Perimeter
- State or Territory
- Main Route - Unimproved
- Local Road
- 4WD
- County or Equivalent
- Driveable
- Not Driveable



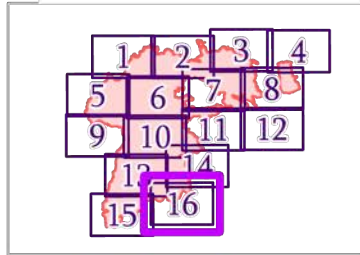
IAP MAP

Summit Trail

WA-COA-200087

45,815 Acres
on 08/27/2021 at 2100

August 29, 2021



Page 16 of 16

- Drop Point
- ✕ Closure
- H Lookout
- Hot Spot - Spot Fire
- Water Development or Draft Site
- ◆ Repeater
- W Water Source
- Completed Dozer Line
- Completed Hand Line
- Completed Road as Line
- Retardant Drop
- Contained Line
- Fire Perimeter
- State or Territory
- Main Route - Improved
- Local Road
- County or Equivalent
- Driveable
- Not Driveable

