

IAP MAP Summit Trail Fire

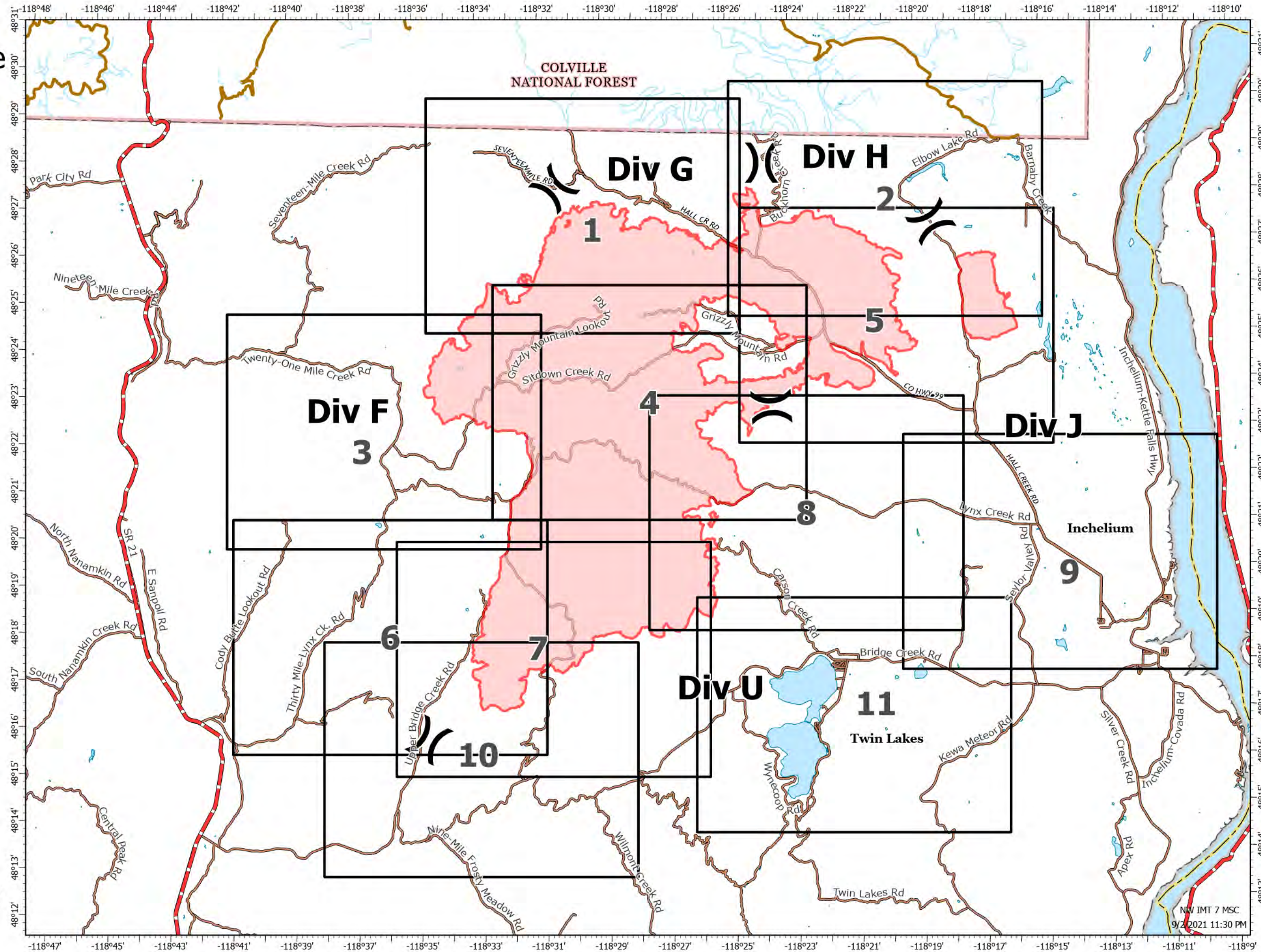
WA-COA-200087

46,525 Acres
on 09/01/2021 at 2130

September 03, 2021



- Local Named Roads
- BIA
- County
- State
- Tribe
- Highway
- ARTERIAL
- COLLECTOR
- LOCAL
- Wildfire Daily Fire Perimeter



1:140,000
NAD 1983
UTM Z 11

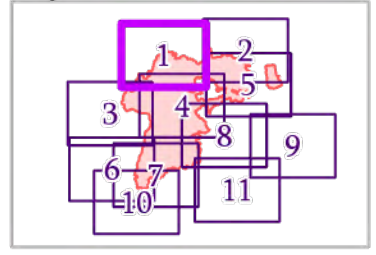
NW IMT 7 MSC
9/2/2021 11:30 PM

IAP MAP

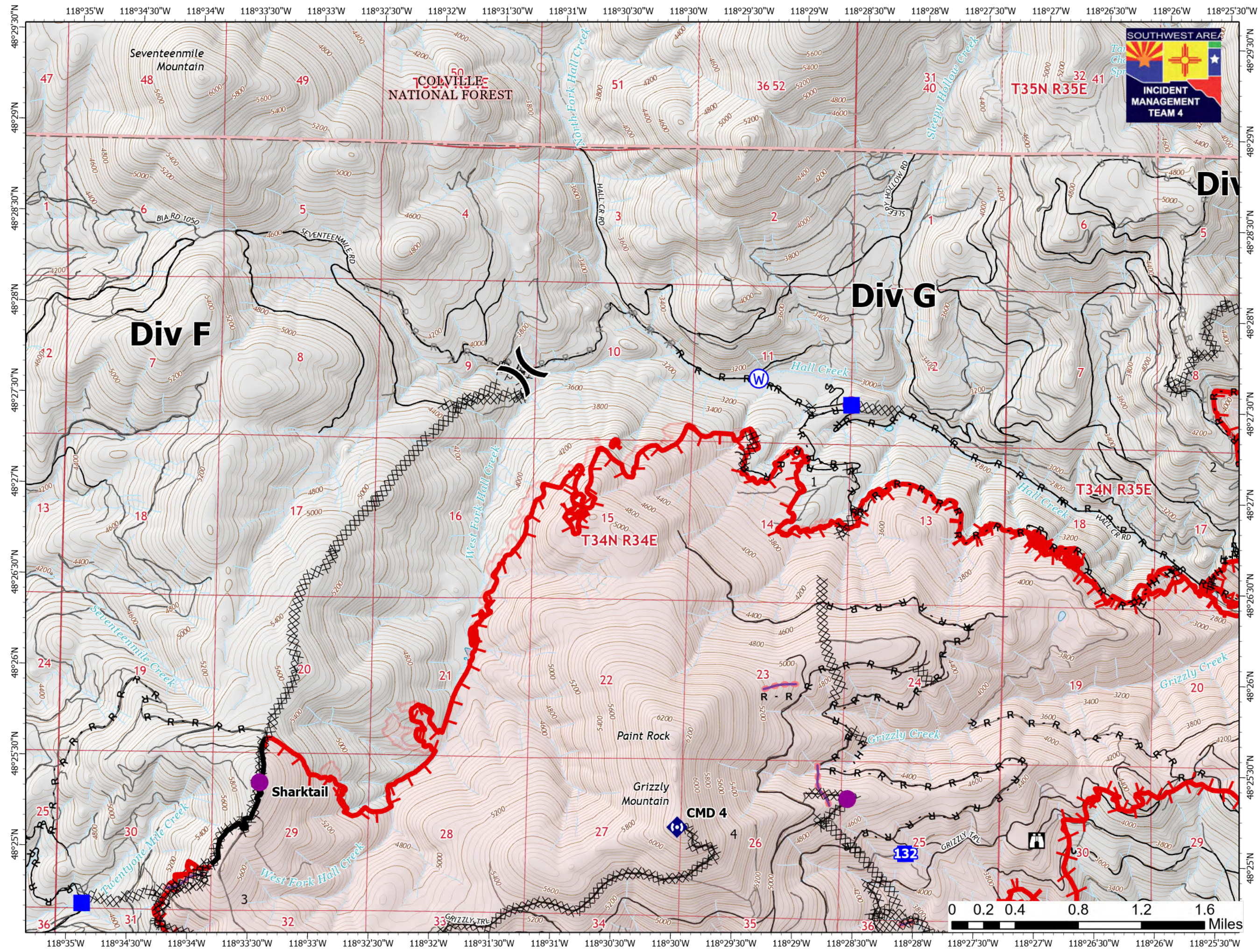
Summit Trail Fire

WA-COA-200087

46,525 Acres
on 09/01/2021 at 2130
September 03, 2021



- Page 01 of 11
- Helispot
 - Division Break
 - Drop Point
 - Lookout
 - Hot Spot - Spot Fire
 - ◆ Repeater
 - W Water Source
 - Completed Dozer Line
 - Completed Hand Line
 - Completed Road as Line
 - Planned Road as Line
 - Retardant Drop
 - Fire Edge
 - Contained Line
 - Fire Perimeter
 - Local Road
 - 4WD
 - Driveable
 - Not Driveable



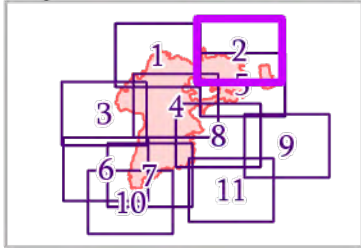
IAP MAP

Summit Trail Fire

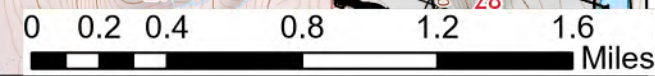
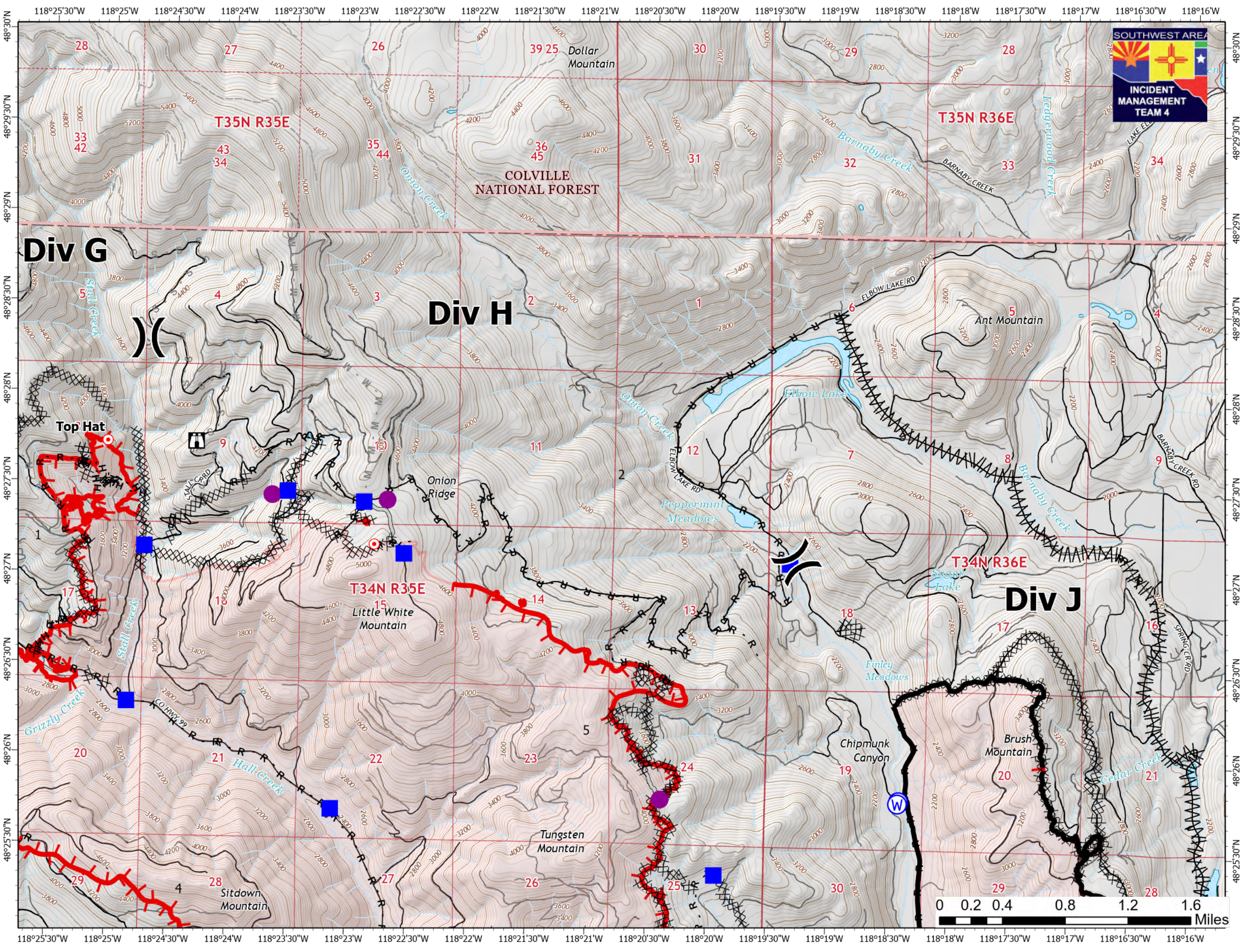
WA-COA-200087

46,525 Acres
on 09/01/2021 at 2130

September 03, 2021



- Page 02 of 11
- Helispot
 -) (Division Break
 - Drop Point
 - Lookout
 - Hot Spot - Spot Fire
 - W Water Source
 - X Completed Dozer Line
 - ^ Completed Fuel Break
 - H Completed Hand Line
 - R Completed Road as Line
 - H Planned Hand Line
 - M Planned Mixed Construction Line
 - R Planned Road as Line
 - S Planned Secondary Line
 - Access or Improved Road
 - Fire Edge
 - Contained Line
 - Fire Perimeter
 - Local Road
 - 4WD
 - Driveable
 - Not Driveable



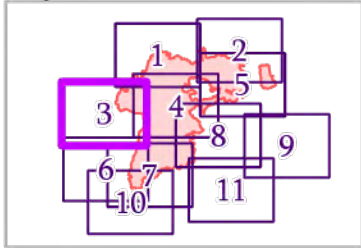
IAP MAP

Summit Trail Fire

WA-COA-200087

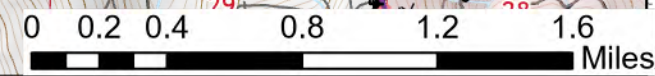
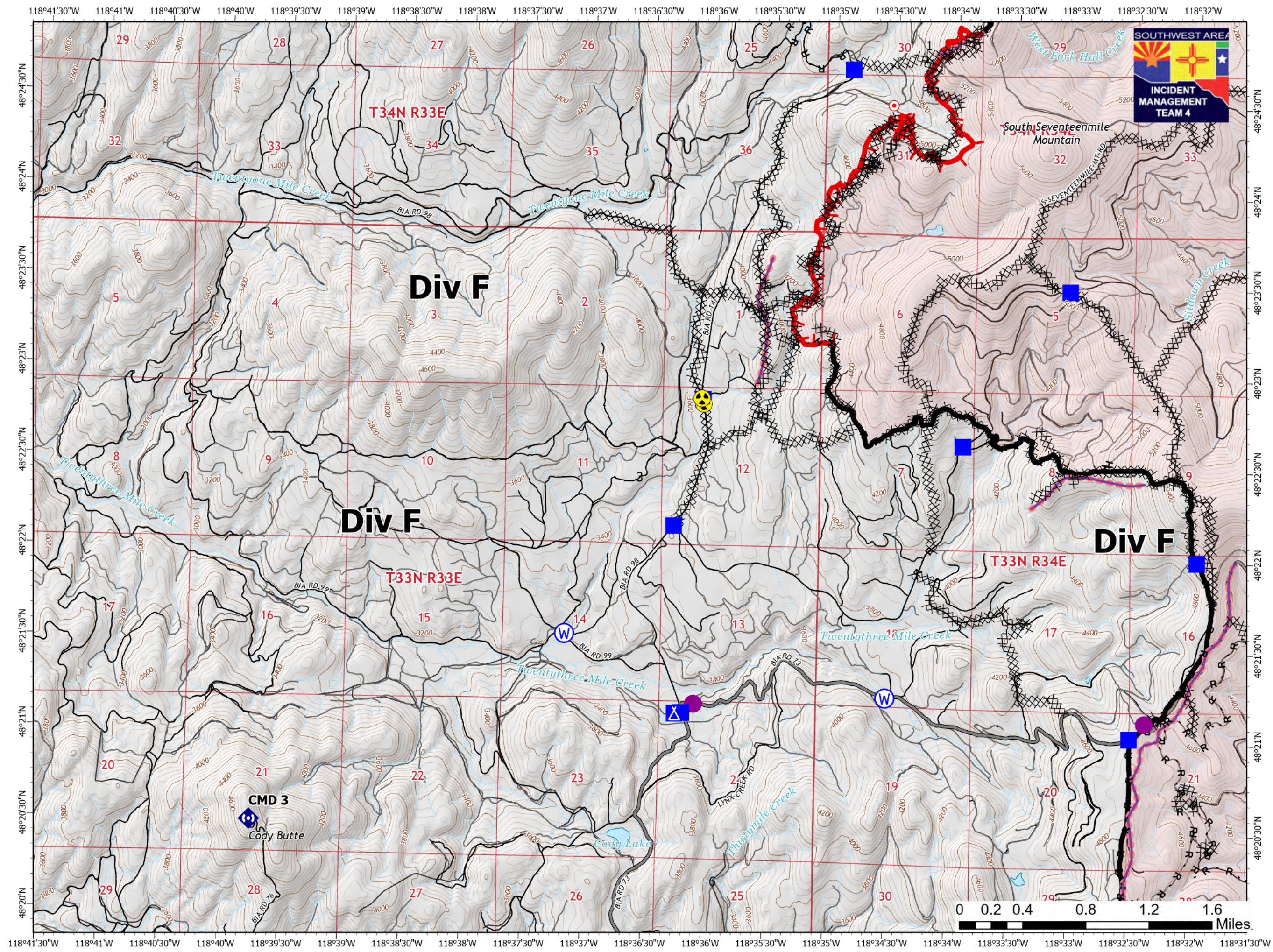
46,525 Acres
on 09/01/2021 at 2130

September 03, 2021



Page 03 of 11

- Helispot
- Drop Point
- Camp
- Hot Spot - Spot Fire
- Repeater
- Hazard
- Water Source
- Completed Dozer Line
- Completed Hand Line
- Completed Road as Line
- Planned Road as Line
- Retardant Drop
- Fire Edge
- Contained Line
- Fire Perimeter
- Main Route - Unimproved
- Local Road
- 4WD
- Driveable
- Not Driveable

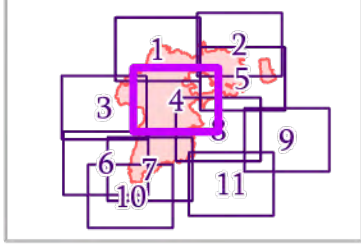


IAP MAP

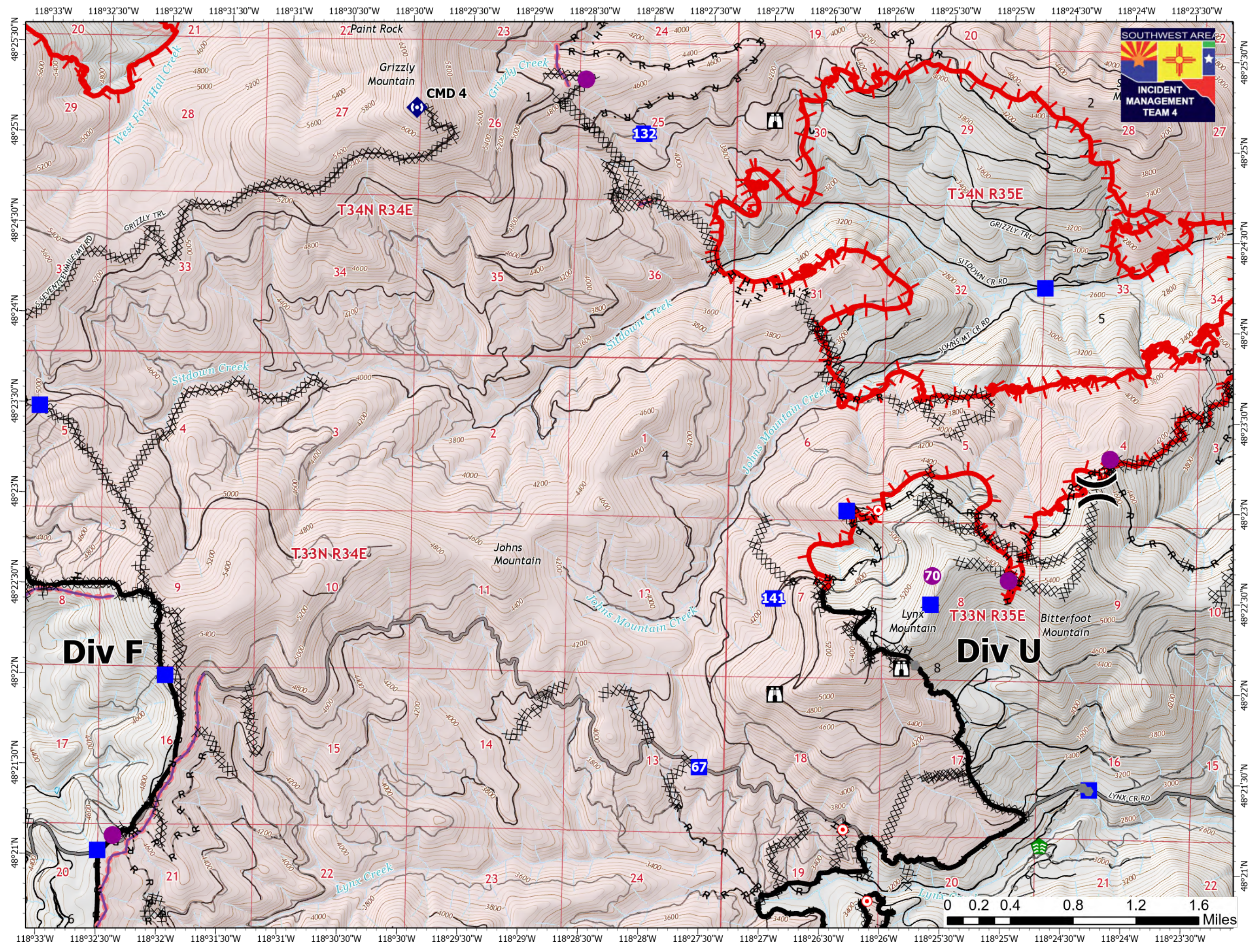
Summit Trail Fire

WA-COA-200087

46,525 Acres
on 09/01/2021 at 2130
September 03, 2021



- Page 04 of 11
- Helispot
 -) Division Break
 - Drop Point
 - Lookout
 - Hot Spot - Spot Fire
 - Comm Tower
 - Stream Crossing
 - Repeater
 - Hazard
 - Completed Dozer Line
 - Completed Hand Line
 - Completed Mixed Construction Line
 - Completed Road as Line
 - Planned Hand Line
 - Planned Secondary Line
 - Access or Improved Road
 - Other
 - Retardant Drop
 - Fire Edge
 - Contained Line
 - Fire Perimeter
 - Main Route - Unimproved
 - Local Road
 - 4WD
 - Driveable
 - Not Driveable



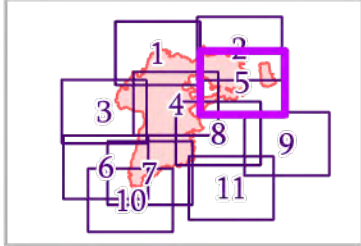
IAP MAP

Summit Trail Fire

WA-COA-200087

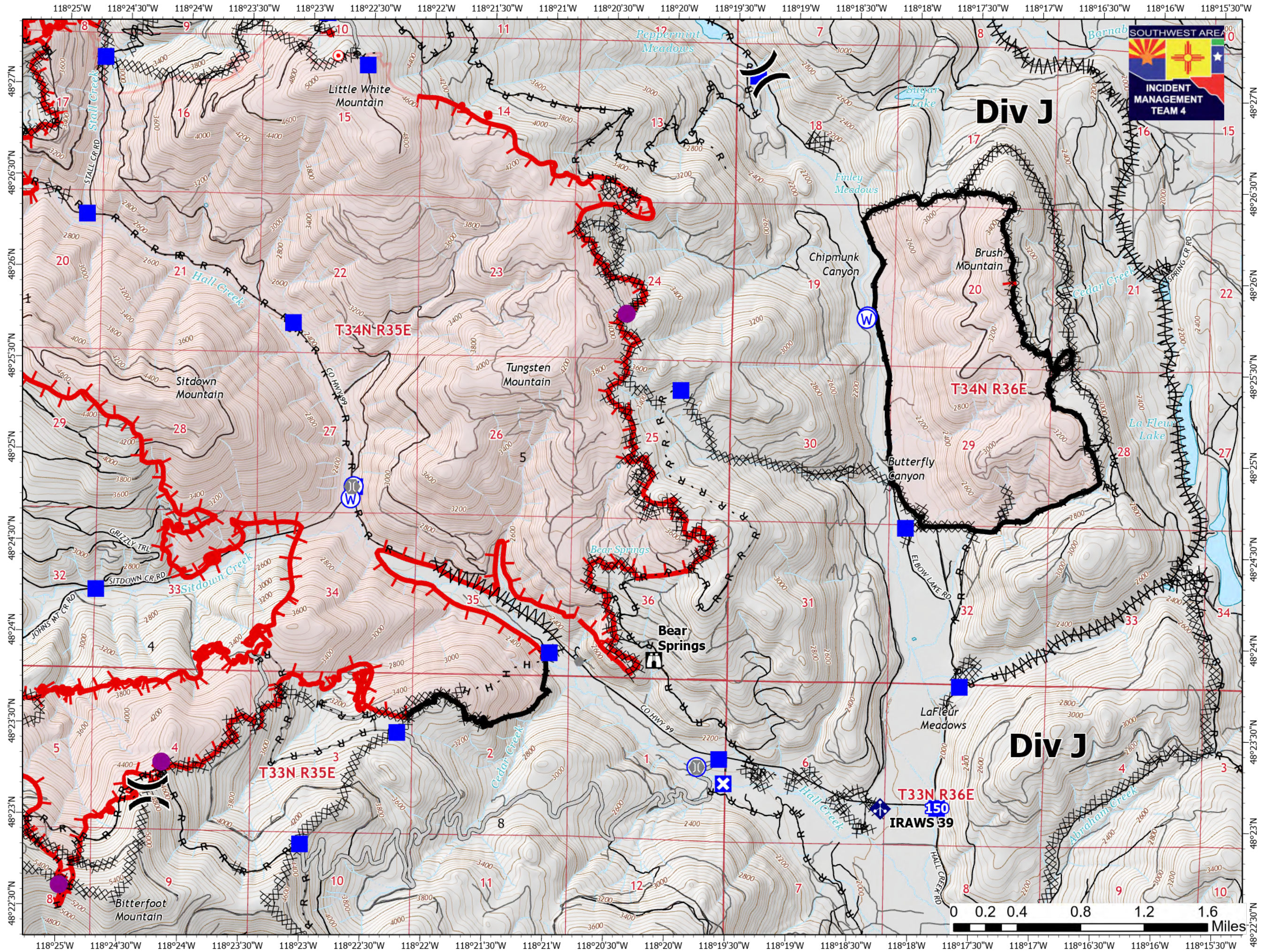
46,525 Acres
on 09/01/2021 at 2130

September 03, 2021



Page 05 of 11

- Helispot
-) Division Break
- Drop Point
- ⊗ Closure
- ⌚ Lookout
- Hot Spot - Spot Fire
- ⬮ Comm Tower
- ⌈ Bridge
- ⬮ Mobile Weather Unit
- ⊙ Water Source
- ⊗ Completed Dozer Line
- ⌈ Completed Fuel Break
- H Completed Hand Line
- R Completed Road as Line
- M Planned Mixed Construction Line
- R Planned Road as Line
- S Planned Secondary Line
- Access or Improved Road
- ┆ Fire Edge
- Contained Line
- Fire Perimeter
- Local Road
- 4WD
- Driveable
- Not Driveable



Div J

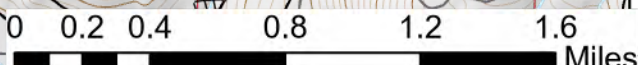
T34N R36E

T34N R35E

T33N R35E

T33N R36E

IRAWS 39



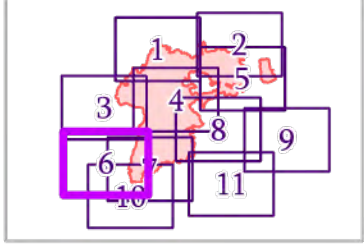
IAP MAP

Summit Trail Fire

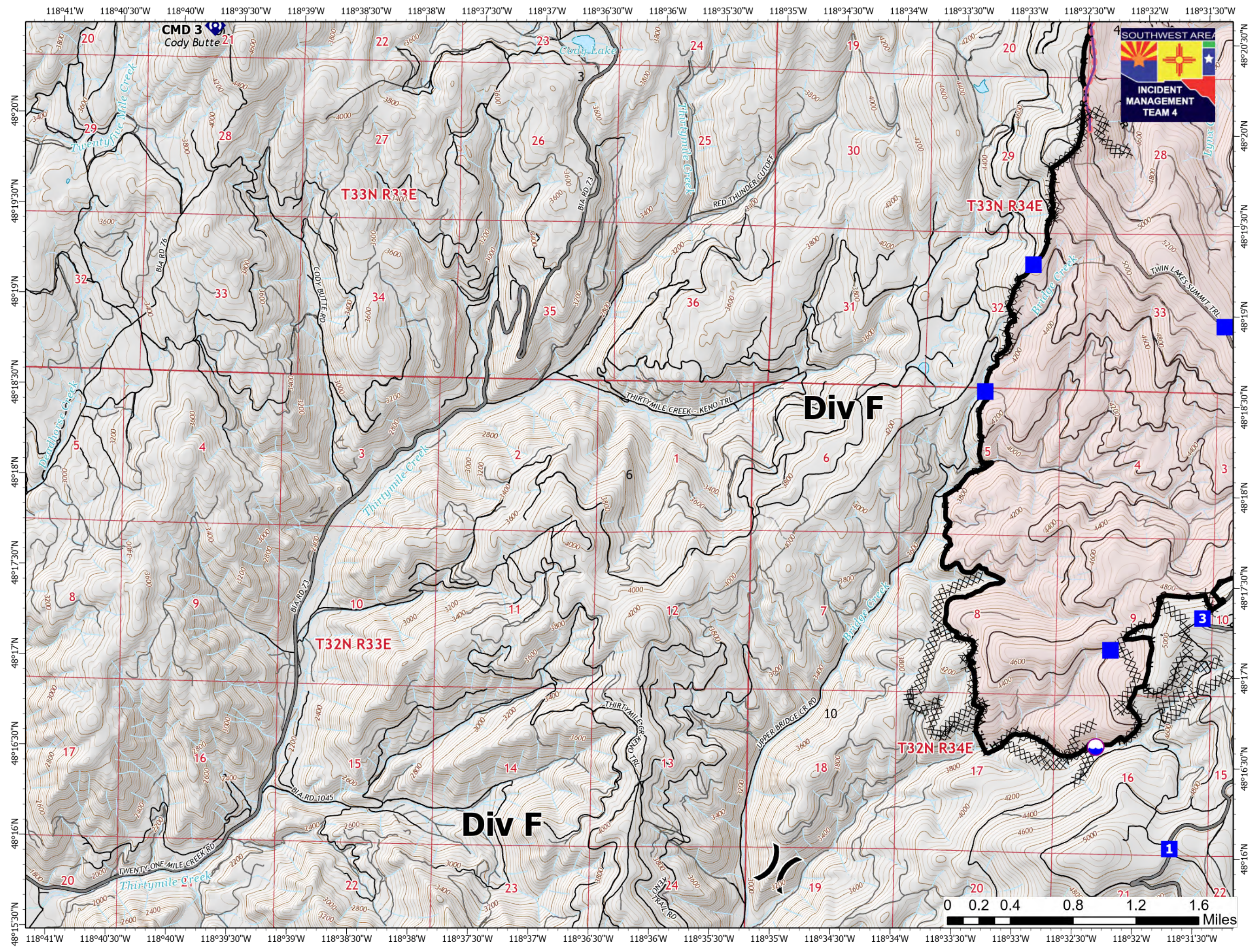
WA-COA-200087

46,525 Acres
on 09/01/2021 at 2130

September 03, 2021

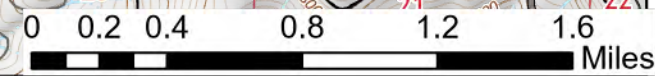


- Page 06 of 11
- Dip Site
 - Division Break
 - Drop Point
 - Repeater
 - Completed Dozer Line
 - Completed Hand Line
 - Completed Road as Line
 - Retardant Drop
 - Contained Line
 - Fire Perimeter
 - Main Route - Unimproved
 - Local Road
 - 4WD
 - Driveable
 - Not Driveable



Div F

Div F



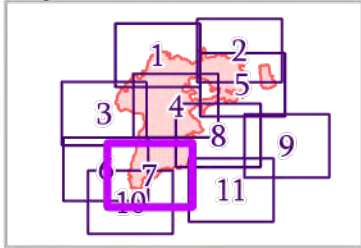
IAP MAP

Summit Trail Fire

WA-COA-200087

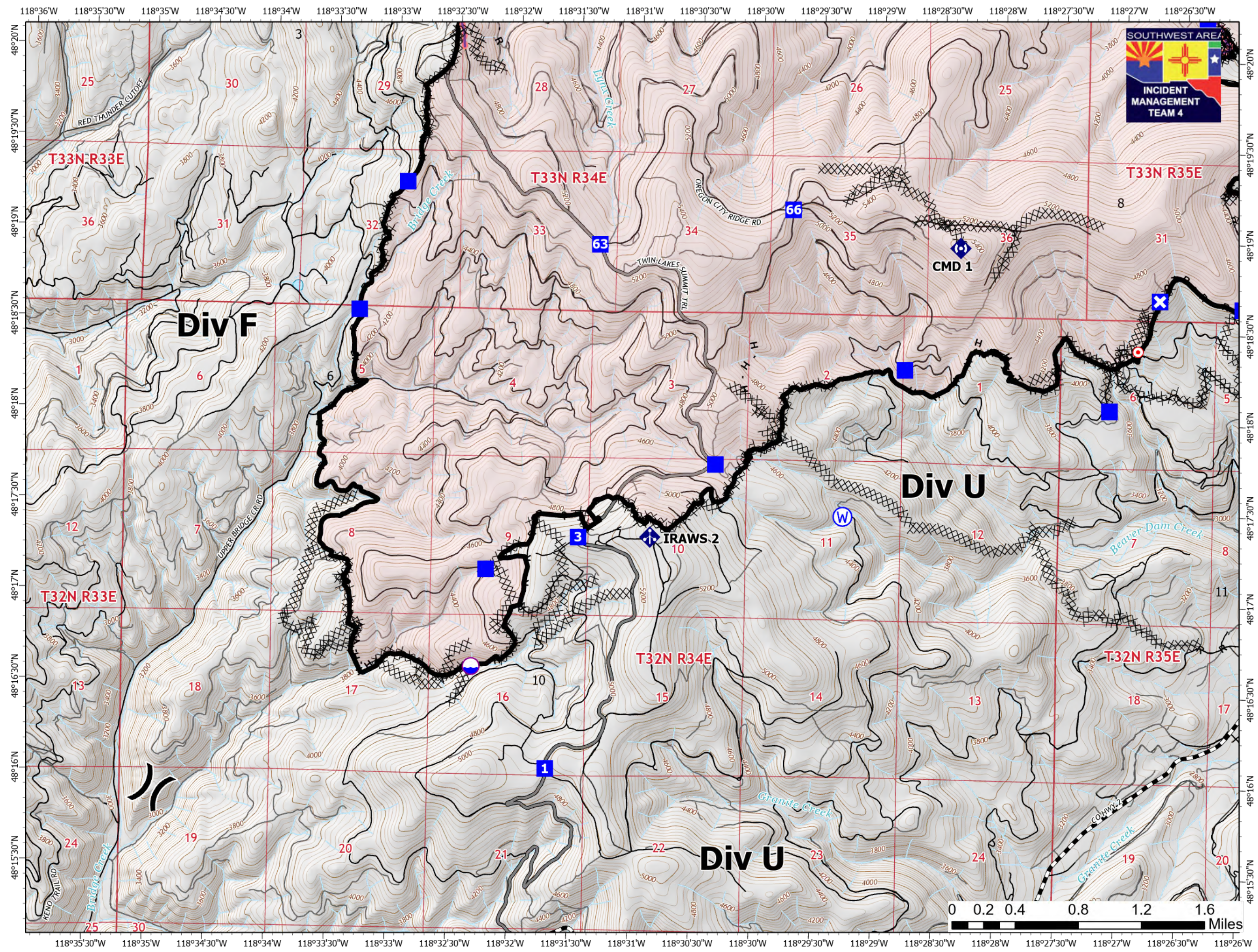
46,525 Acres
on 09/01/2021 at 2130

September 03, 2021



Page 07 of 11

- Dip Site
- Division Break
- Drop Point
- Closure
- Hot Spot - Spot Fire
- Mobile Weather Unit
- Repeater
- Water Source
- Completed Dozer Line
- Completed Hand Line
- Completed Road as Line
- Planned Secondary Line
- Access or Improved Road
- Retardant Drop
- Contained Line
- Fire Perimeter
- Main Route - Improved
- Main Route - Unimproved
- Local Road
- 4WD
- Driveable
- Not Driveable



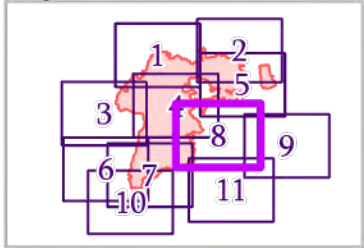
IAP MAP

Summit Trail Fire

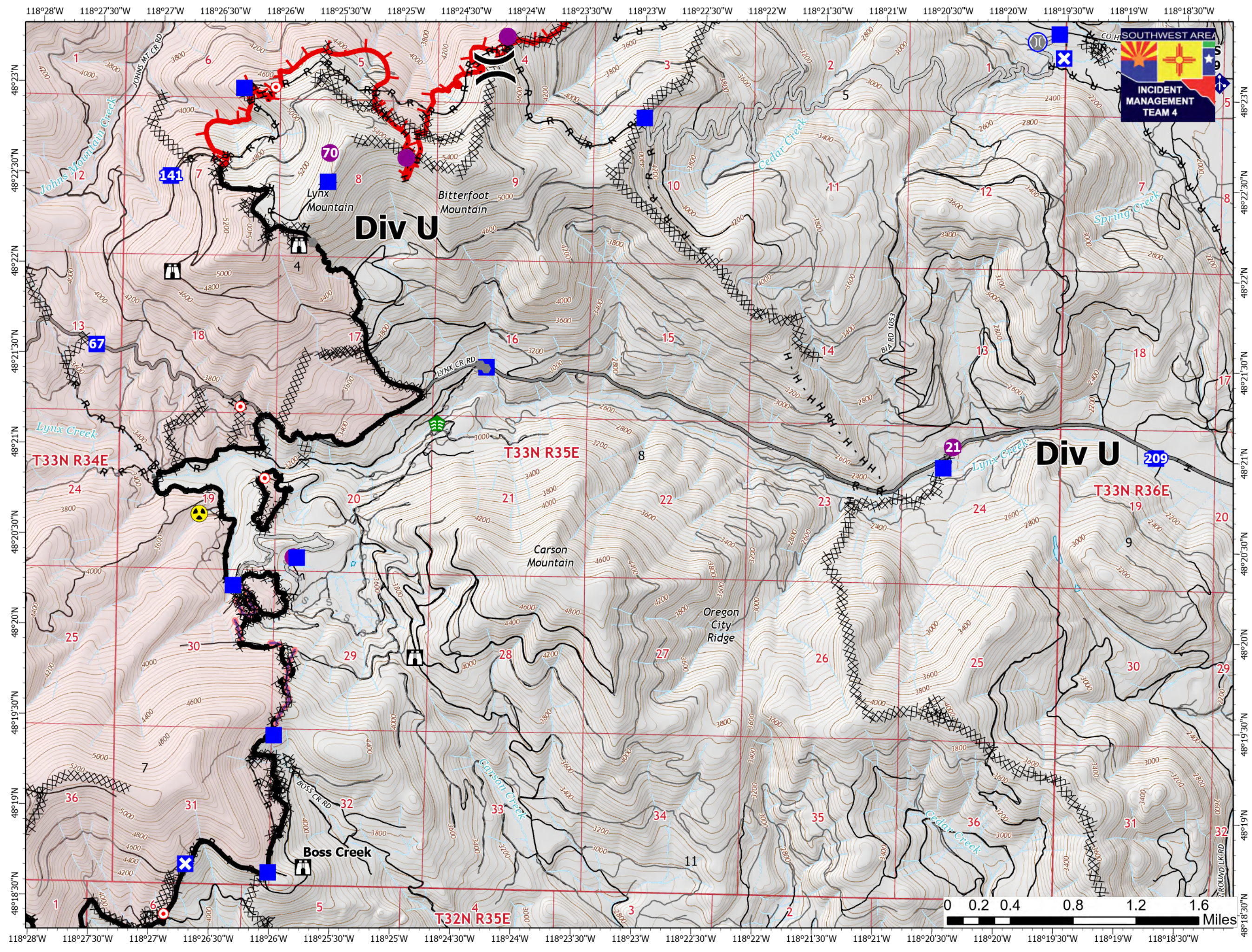
WA-COA-200087

46,525 Acres
on 09/01/2021 at 2130

September 03, 2021



- Page 08 of 11
- Helispot
 -)(Division Break
 - Drop Point
 - ✕ Closure
 - 🏠 Lookout
 - Hot Spot - Spot Fire
 - 📡 Comm Tower
 - 🌉 Bridge
 - 🌿 Stream Crossing
 - 📶 Mobile Weather Unit
 - ☠ Hazard
 - 🌊 Water Source
 - ⌘ Completed Dozer Line
 - H Completed Hand Line
 - M Completed Mixed Construction Line
 - R Completed Road as Line
 - H Planned Hand Line
 - S Planned Secondary Line
 - Access or Improved Road
 - Other
 - 🔴 Retardant Drop
 - ▬ Fire Edge
 - ▬ Contained Line
 - ▭ Fire Perimeter
 - ▬ Main Route - Unimproved
 - ▬ Local Road
 - ▬ Driveable
 - ▬ Not Driveable



Div U

Div U

T33N R34E

T33N R35E

T33N R36E

T32N R35E

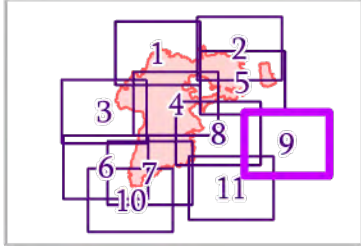
IAP MAP

Summit Trail Fire

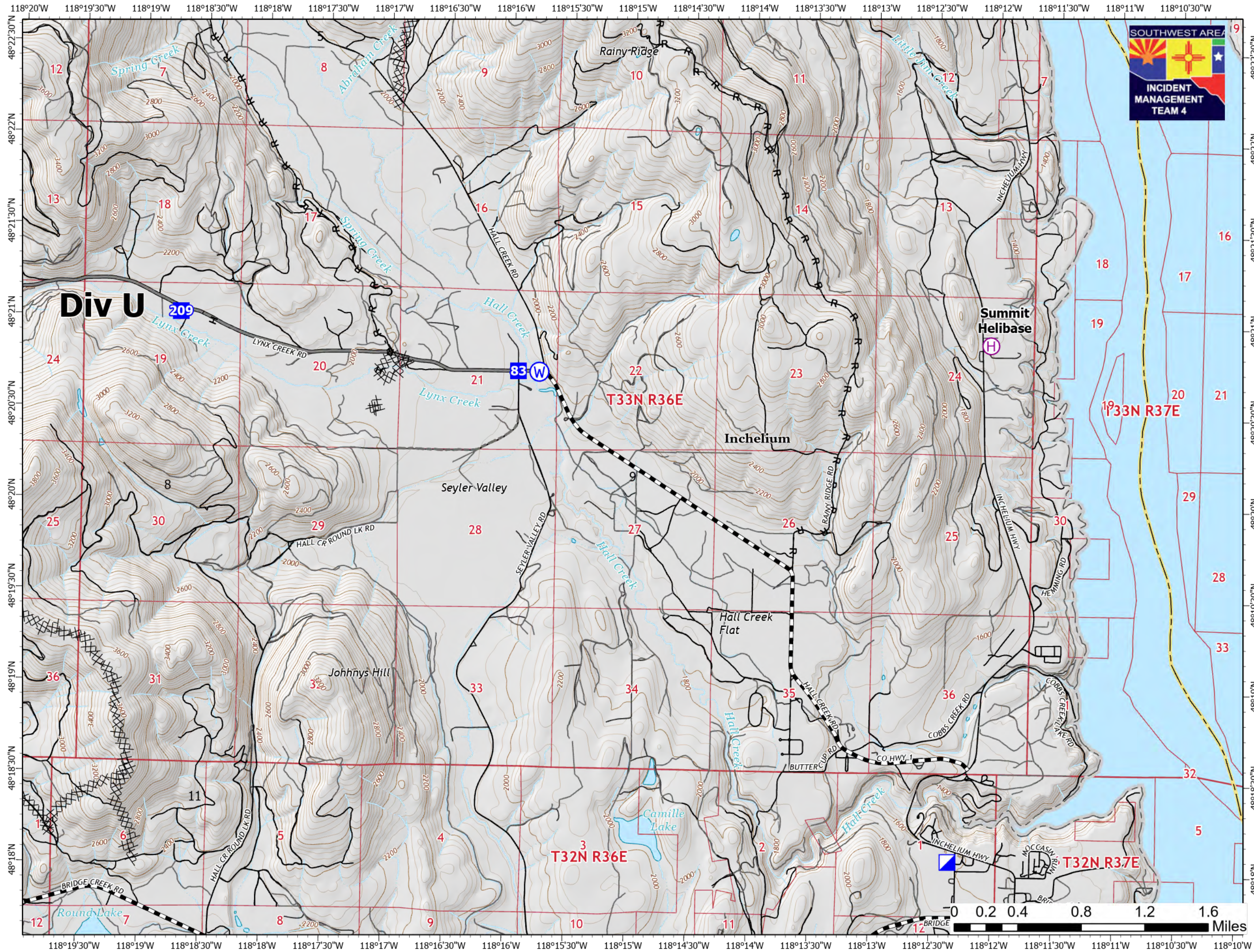
WA-COA-200087

46,525 Acres
on 09/01/2021 at 2130

September 03, 2021



- Page 09 of 11
- Helibase
 - Incident Command Post
 - Drop Point
 - Water Source
 - Completed Dozer Line
 - Completed Hand Line
 - Completed Road as Line
 - Other
 - Main Route - Improved
 - Main Route - Unimproved
 - Local Connector
 - Local Road
 - 4WD
 - Driveable
 - Not Driveable

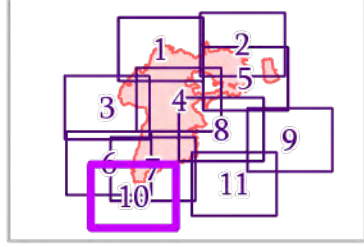


IAP MAP

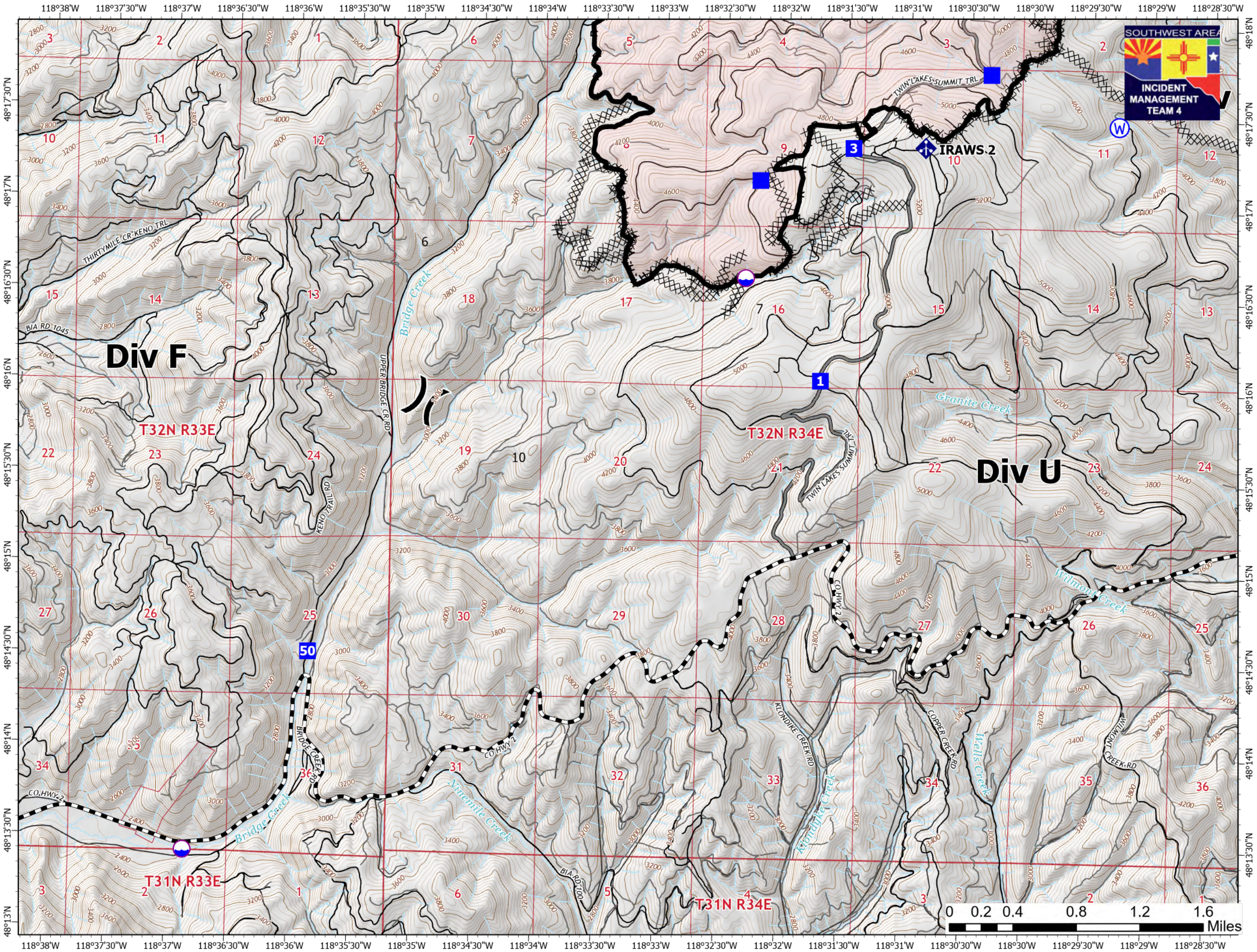
Summit Trail Fire

WA-COA-200087

46,525 Acres
on 09/01/2021 at 2130
September 03, 2021



- Page 10 of 11
- Dip Site
 - Division Break
 - Drop Point
 - Mobile Weather Unit
 - Water Source
 - Completed Dozer Line
 - Completed Hand Line
 - Completed Road as Line
 - Contained Line
 - Fire Perimeter
 - Main Route - Improved
 - Main Route - Unimproved
 - Local Road
 - 4WD
 - Driveable
 - Not Driveable

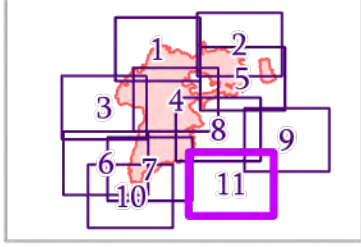


IAP MAP

Summit Trail Fire

WA-COA-200087

46,525 Acres
on 09/01/2021 at 2130
September 03, 2021



- Page 11 of 11
- Dip Site
 - Drop Point
 - Closure
 - Lookout
 - Comm Tower
 - Water Development or Draft Site
 - Water Source
 - Completed Dozer Line
 - Completed Hand Line
 - Completed Mixed Construction Line
 - Completed Road as Line
 - Planned Mixed Construction Line
 - Other
 - Contained Line
 - Fire Perimeter
 - Main Route - Improved
 - Local Road
 - 4WD
 - Driveable
 - Not Driveable

