

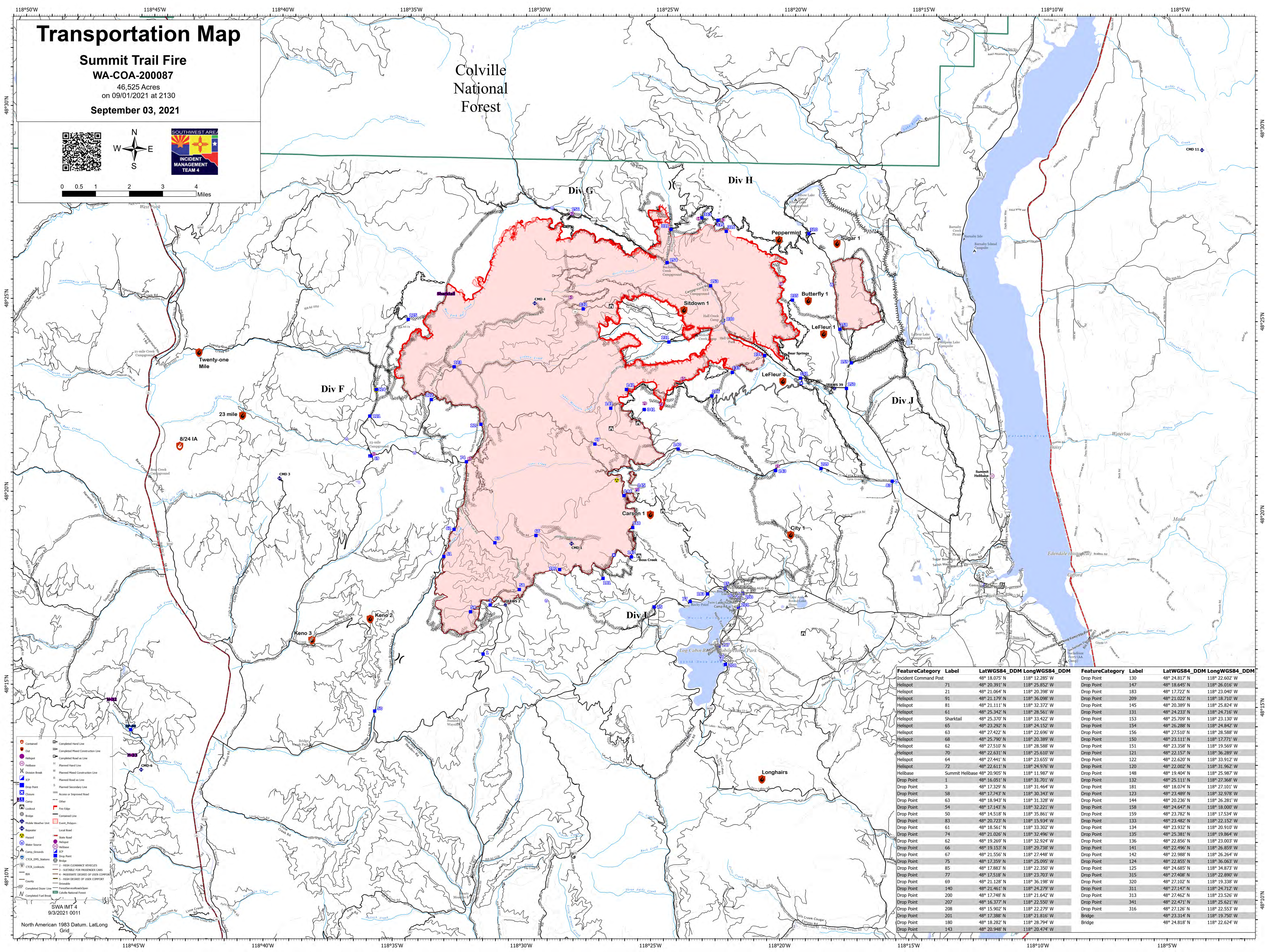
Transportation Map

Summit Trail Fire
WA-COA-200087
46,525 Acres
on 09/01/2021 at 2130
September 03, 2021



0 0.5 1 2 3 4 Miles

Colville National Forest



FeatureCategory	Label	LatWGS84_DDM	LongWGS84_DDM	FeatureCategory	Label	LatWGS84_DDM	LongWGS84_DDM
Drop Point	130	48° 24.817' N	118° 22.602' W	Drop Point	147	48° 18.645' N	118° 26.016' W
Drop Point	147	48° 18.645' N	118° 26.016' W	Drop Point	183	48° 17.722' N	118° 23.040' W
Drop Point	183	48° 17.722' N	118° 23.040' W	Drop Point	209	48° 21.022' N	118° 18.710' W
Drop Point	209	48° 21.022' N	118° 18.710' W	Drop Point	145	48° 20.389' N	118° 25.824' W
Drop Point	145	48° 20.389' N	118° 25.824' W	Drop Point	131	48° 24.233' N	118° 24.716' W
Drop Point	131	48° 24.233' N	118° 24.716' W	Drop Point	153	48° 25.709' N	118° 23.130' W
Drop Point	153	48° 25.709' N	118° 23.130' W	Drop Point	154	48° 26.288' N	118° 24.842' W
Drop Point	154	48° 26.288' N	118° 24.842' W	Drop Point	155	48° 23.510' N	118° 25.358' W
Drop Point	155	48° 23.510' N	118° 25.358' W	Drop Point	150	48° 23.111' N	118° 17.771' W
Drop Point	150	48° 23.111' N	118° 17.771' W	Drop Point	151	48° 23.358' N	118° 19.569' W
Drop Point	151	48° 23.358' N	118° 19.569' W	Drop Point	121	48° 22.157' N	118° 36.289' W
Drop Point	121	48° 22.157' N	118° 36.289' W	Drop Point	122	48° 22.620' N	118° 33.912' W
Drop Point	122	48° 22.620' N	118° 33.912' W	Drop Point	120	48° 22.002' N	118° 31.962' W
Drop Point	120	48° 22.002' N	118° 31.962' W	Drop Point	148	48° 19.404' N	118° 25.987' W
Drop Point	148	48° 19.404' N	118° 25.987' W	Drop Point	132	48° 25.111' N	118° 27.368' W
Drop Point	132	48° 25.111' N	118° 27.368' W	Drop Point	181	48° 18.074' N	118° 27.101' W
Drop Point	181	48° 18.074' N	118° 27.101' W	Drop Point	123	48° 23.489' N	118° 32.978' W
Drop Point	123	48° 23.489' N	118° 32.978' W	Drop Point	144	48° 20.236' N	118° 26.281' W
Drop Point	144	48° 20.236' N	118° 26.281' W	Drop Point	158	48° 24.647' N	118° 18.000' W
Drop Point	158	48° 24.647' N	118° 18.000' W	Drop Point	159	48° 23.782' N	118° 17.534' W
Drop Point	159	48° 23.782' N	118° 17.534' W	Drop Point	133	48° 23.482' N	118° 22.152' W
Drop Point	133	48° 23.482' N	118° 22.152' W	Drop Point	134	48° 23.932' N	118° 20.910' W
Drop Point	134	48° 23.932' N	118° 20.910' W	Drop Point	135	48° 23.381' N	118° 19.864' W
Drop Point	135	48° 23.381' N	118° 19.864' W	Drop Point	136	48° 22.856' N	118° 23.003' W
Drop Point	136	48° 22.856' N	118° 23.003' W	Drop Point	141	48° 22.496' N	118° 26.859' W
Drop Point	141	48° 22.496' N	118° 26.859' W	Drop Point	142	48° 22.988' N	118° 26.264' W
Drop Point	142	48° 22.988' N	118° 26.264' W	Drop Point	124	48° 22.855' N	118° 36.063' W
Drop Point	124	48° 22.855' N	118° 36.063' W	Drop Point	125	48° 24.685' N	118° 34.873' W
Drop Point	125	48° 24.685' N	118° 34.873' W	Drop Point	315	48° 27.408' N	118° 22.890' W
Drop Point	315	48° 27.408' N	118° 22.890' W	Drop Point	320	48° 27.102' N	118° 19.338' W
Drop Point	320	48° 27.102' N	118° 19.338' W	Drop Point	311	48° 27.157' N	118° 23.512' W
Drop Point	311	48° 27.157' N	118° 23.512' W	Drop Point	313	48° 27.462' N	118° 23.526' W
Drop Point	313	48° 27.462' N	118° 23.526' W	Drop Point	341	48° 22.471' N	118° 25.621' W
Drop Point	341	48° 22.471' N	118° 25.621' W	Drop Point	316	48° 27.126' N	118° 19.750' W
Drop Point	316	48° 27.126' N	118° 19.750' W	Bridge	180	48° 18.282' N	118° 28.794' W
Bridge	180	48° 18.282' N	118° 28.794' W	Bridge	143	48° 20.948' N	118° 20.474' W
Bridge	143	48° 20.948' N	118° 20.474' W				

North American 1983 Datum, Lat/Long Grid

SWA IMT 4
9/3/2021 0011

- Completed Hand Line
- Completed Mixed Construction Line
- Completed Road as Line
- Planned Hand Line
- Planned Mixed Construction Line
- Planned Road as Line
- Planned Secondary Line
- Access or Improved Road
- Other
- Fee Eider
- Contained Line
- Event_Path
- Local Road
- State Road
- Highway
- Water Source
- Drop Point
- High Clearance Vehicles
- Suitable for Passenger Cars
- Arbitrary Degree of Slope Control
- 5-High Degree of Slope Control
- Drivable
- Fire/Defensible/Non-Defensible
- Colville National Forest
- Completed Fuel Break