

# Ops IR Map

## Summit Trail Fire

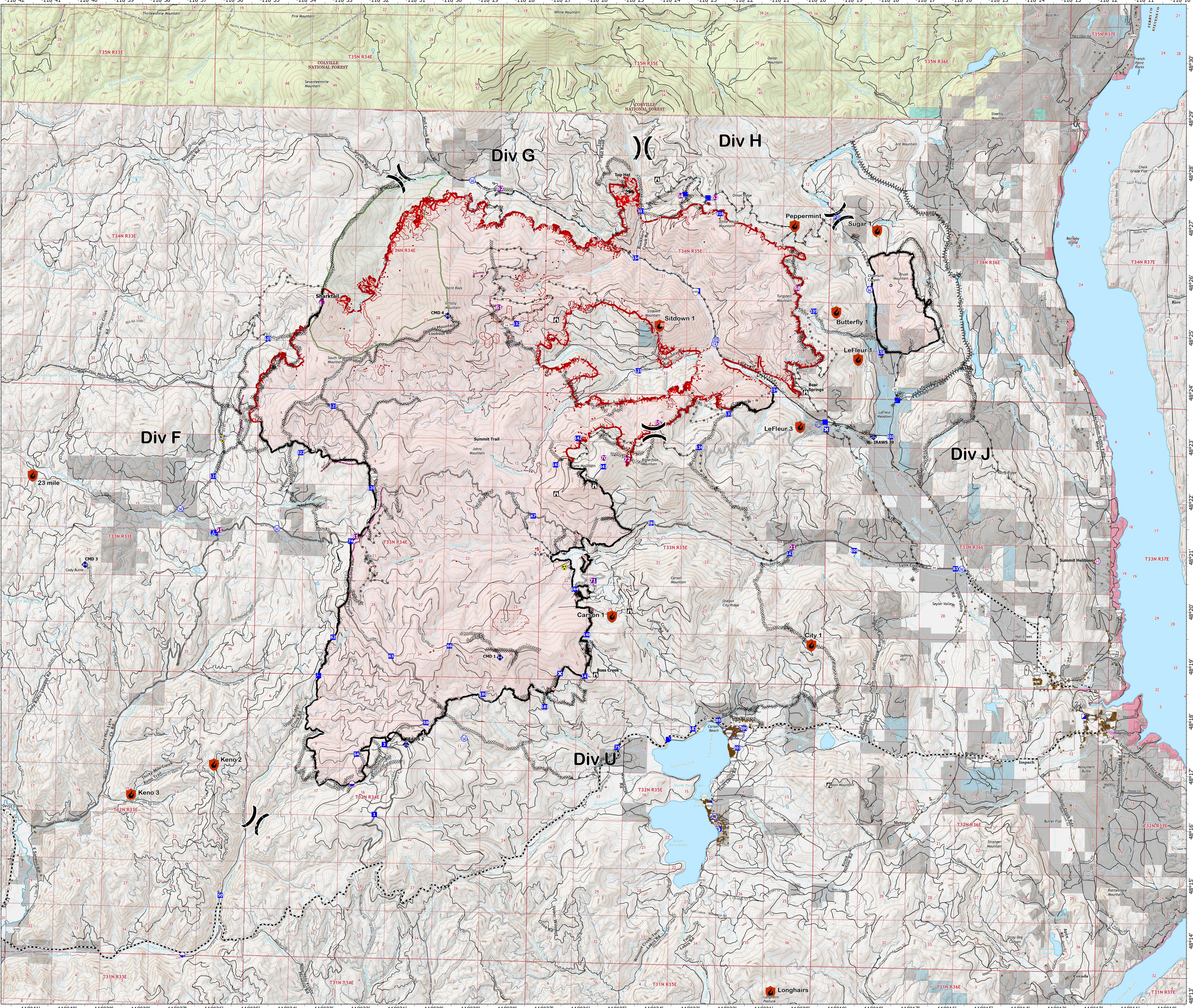
### WA-COA-200087

September 03, 2021



46,618 acres on 09/02/2021 at 21:07

- New Starts**
- Out
  - Dip Site
  - Helispot
  - Helibase
  - Division Break
  - Incident Command Post
  - Drop Point
  - Closure
  - Camp
  - Lookout
  - Hot Spot - Spot Fire
  - Comm Tower
  - Bridge
  - Mobile Weather Unit
  - Repeater
  - Hazard
  - Water Source
  - Completed Dozer Line
  - Completed Fuel Break
  - Completed Hand Line
  - Completed Mixed Construction Line
  - Completed Road as Line
  - Planned Hand Line
  - Planned Mixed Construction Line
  - Planned Road as Line
  - Planned Secondary Line
  - Access or Improved Road
  - Other
  - Retardant Drop
  - Fire Edge
  - Contained Line
  - Wildfire Daily Fire Perimeter
  - Main Route - Improved
  - Main Route - Unimproved
  - Local Road
  - 4WD
  - Trail
  - Not Driveable
  - Wilderness Area
  - Private
  - Colville Confederated Tribes
  - Ferry County
  - Indian Allotment Trust Lands
  - National Park Service
  - Open water and lakes
  - US Bureau of Reclamation
  - US Forest Service
  - WA DNR
  - Structures
  - ForestServiceRoadsOpen
  - Census\_Road for Labeling Only
  - CTCR Road Shields
  - IR Isolated Heat Sources
  - IR Possible Isolated Heat Sources
  - IR Intense Heat
  - IR Scattered Heat
  - IR Heat Perimeter



1:38,000  
SW Team 4  
NAD 1983 UTM Zone 11N