

IAP MAP

Summit Trail Fire

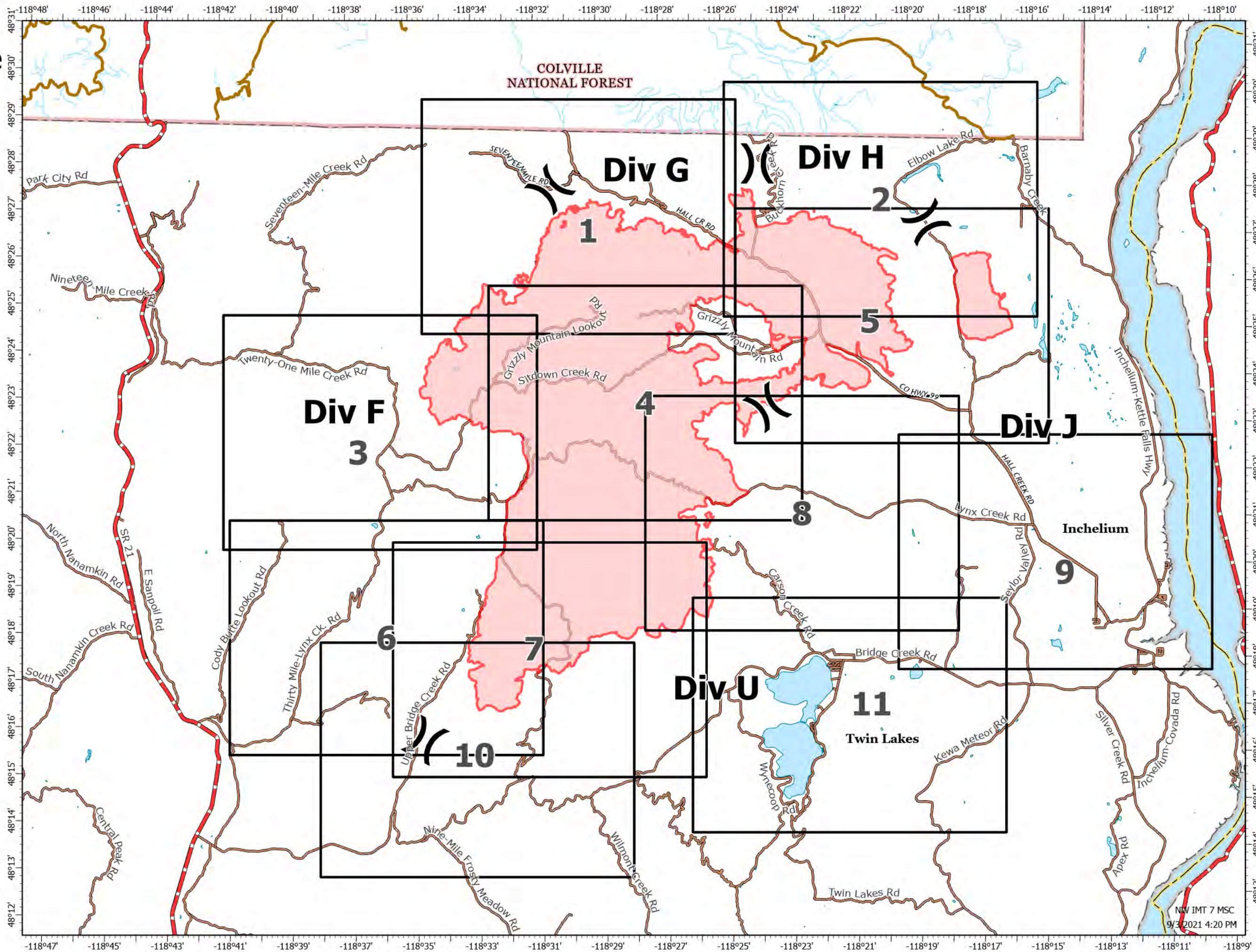
WA-COA-200087

46,618 Acres
on 09/02/2021 at 21:07

September 04, 2021



- Local Named Roads
- BIA
- County
- State
- Tribe
- Highway
- ARTERIAL
- COLLECTOR
- LOCAL
- Wildfire Daily Fire Perimeter



1:140,000
NAD 1983
UTM Z 11

NW IMT 7 MSC
9/3/2021 4:20 PM

118°36'W 118°35'30"W 118°35'W 118°34'30"W 118°34'W 118°33'30"W 118°33'W 118°32'30"W 118°32'W 118°31'30"W 118°31'W 118°30'30"W 118°30'W 118°29'30"W 118°29'W 118°28'30"W 118°28'W 118°27'30"W 118°27'W 118°26'30"W 118°26'W 118°25'30"W 118°25'W

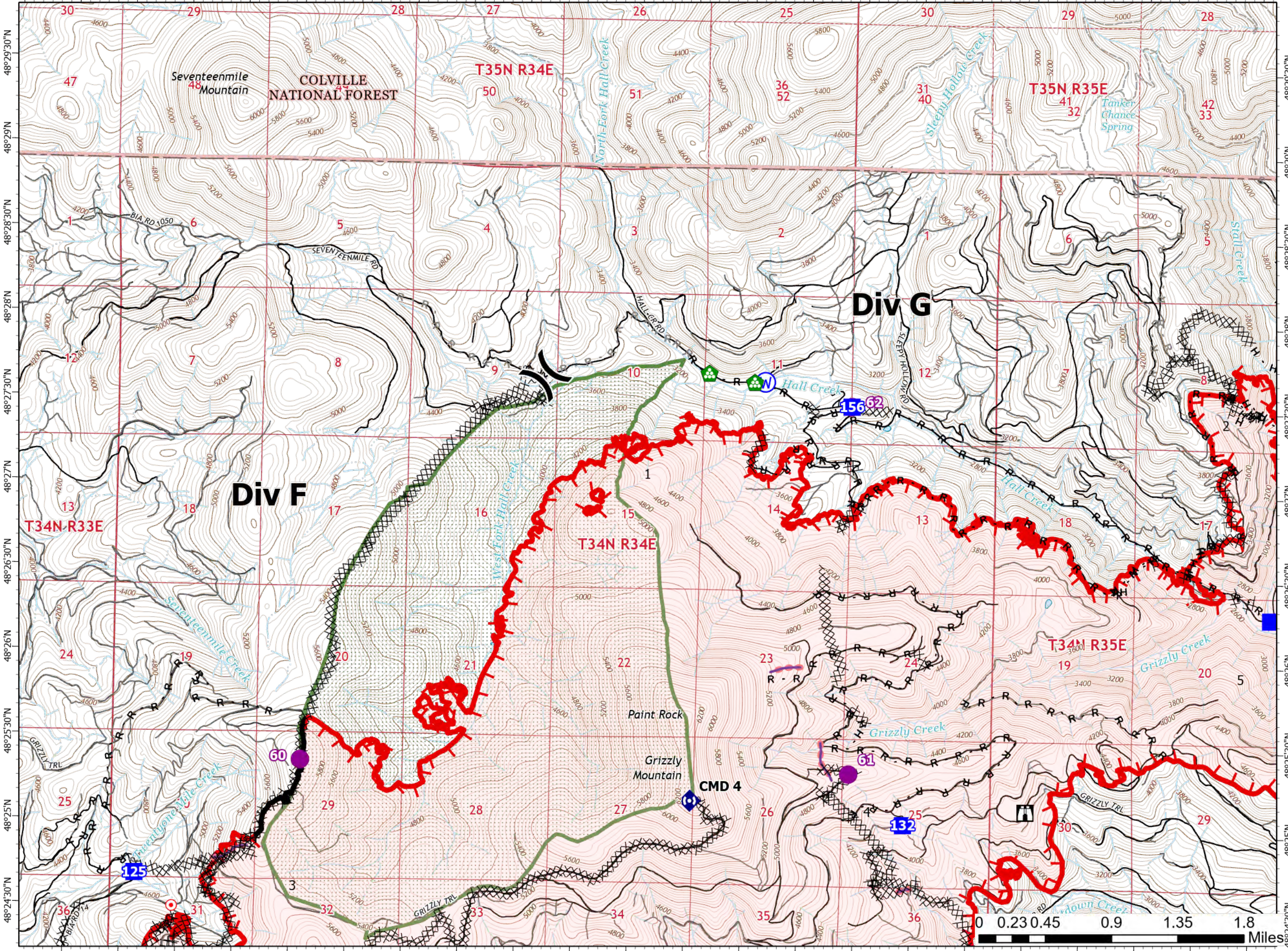
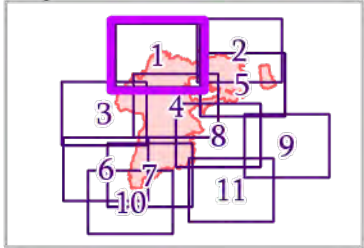
IAP MAP

Summit Trail Fire

WA-COA-200087

46,618 Acres
on 09/02/2021 at 21:07

September 04, 2021



- Page 01 of 11
- Helispot
 - ⎓ Division Break
 - Drop Point
 - 🏠 Lookout
 - 🔥 Hot Spot - Spot Fire
 - 🏠 Landing or Log Deck
 - 📡 Repeater
 - 🚰 Water Source
 - XX XX Completed Dozer Line
 - H Completed Hand Line
 - R Completed Road as Line
 - R Planned Road as Line
 - S Planned Secondary Line
 - 🚰 Retardant Drop
 - 🔥 Fire Edge
 - ⬛ Contained Line
 - 🔴 Fire Perimeter
 - Local Road
 - 4WD
 - 🏠 Wilderness Area
 - Driveable
 - Not Driveable



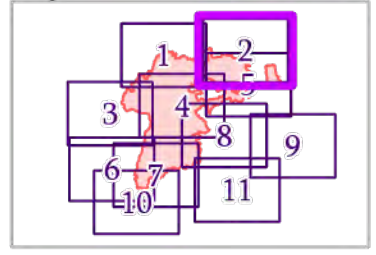
0 0.23 0.45 0.9 1.35 1.8 Miles

IAP MAP

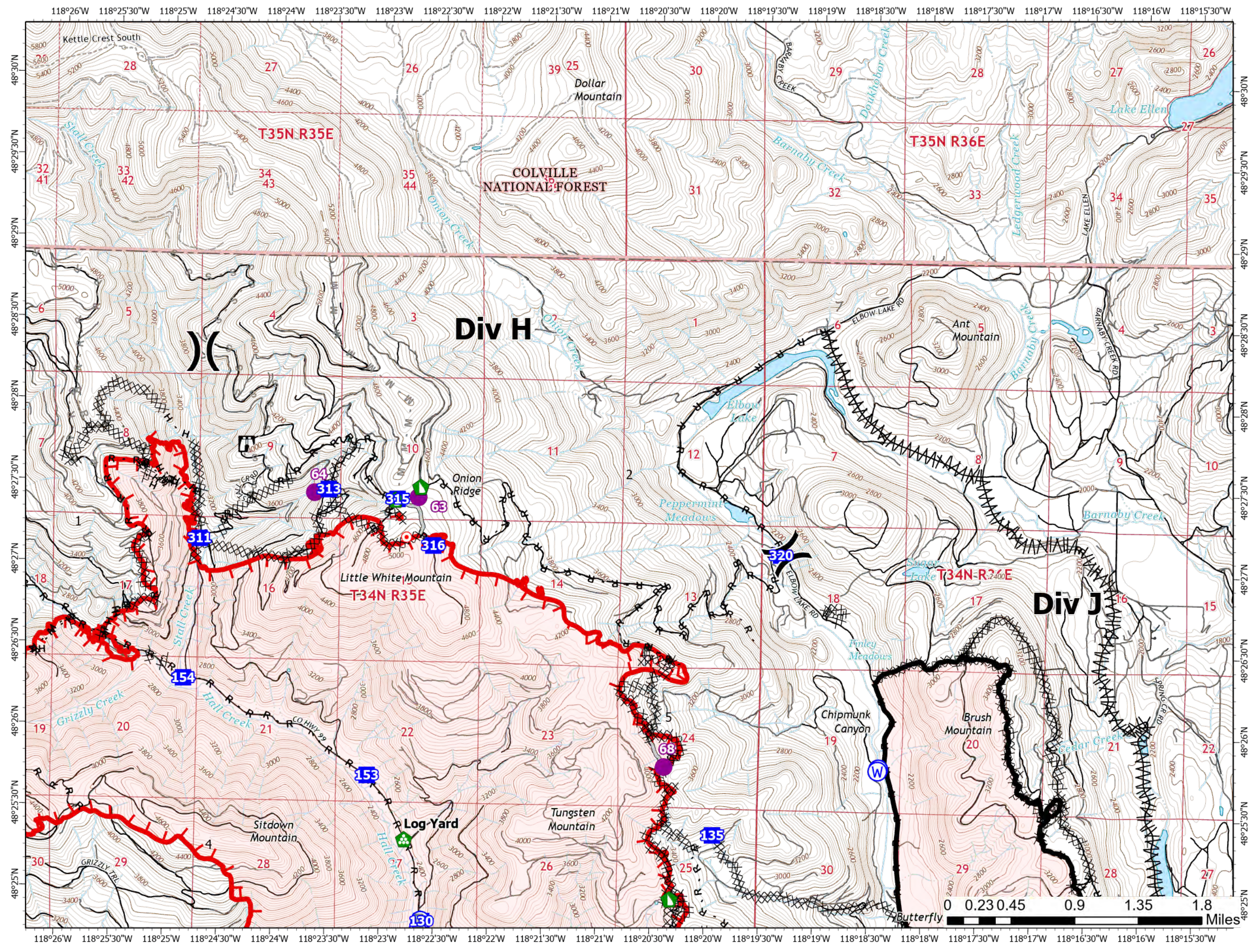
Summit Trail Fire

WA-COA-200087

46,618 Acres
on 09/02/2021 at 21:07
September 04, 2021



- Helispot
-) Division Break
- Drop Point
- Lookout
- Hot Spot - Spot Fire
- Bridge
- Landing or Log Deck
- Dozer Push
- W Water Source
- XX XX Completed Dozer Line
- Completed Fuel Break
- H - Completed Hand Line
- R - Completed Road as Line
- M - Planned Mixed Construction Line
- R - Planned Road as Line
- S - Planned Secondary Line
- Access or Improved Road
- Fire Edge
- Contained Line
- Fire Perimeter
- Local Road
- 4WD
- Trail
- Driveable
- Not Driveable

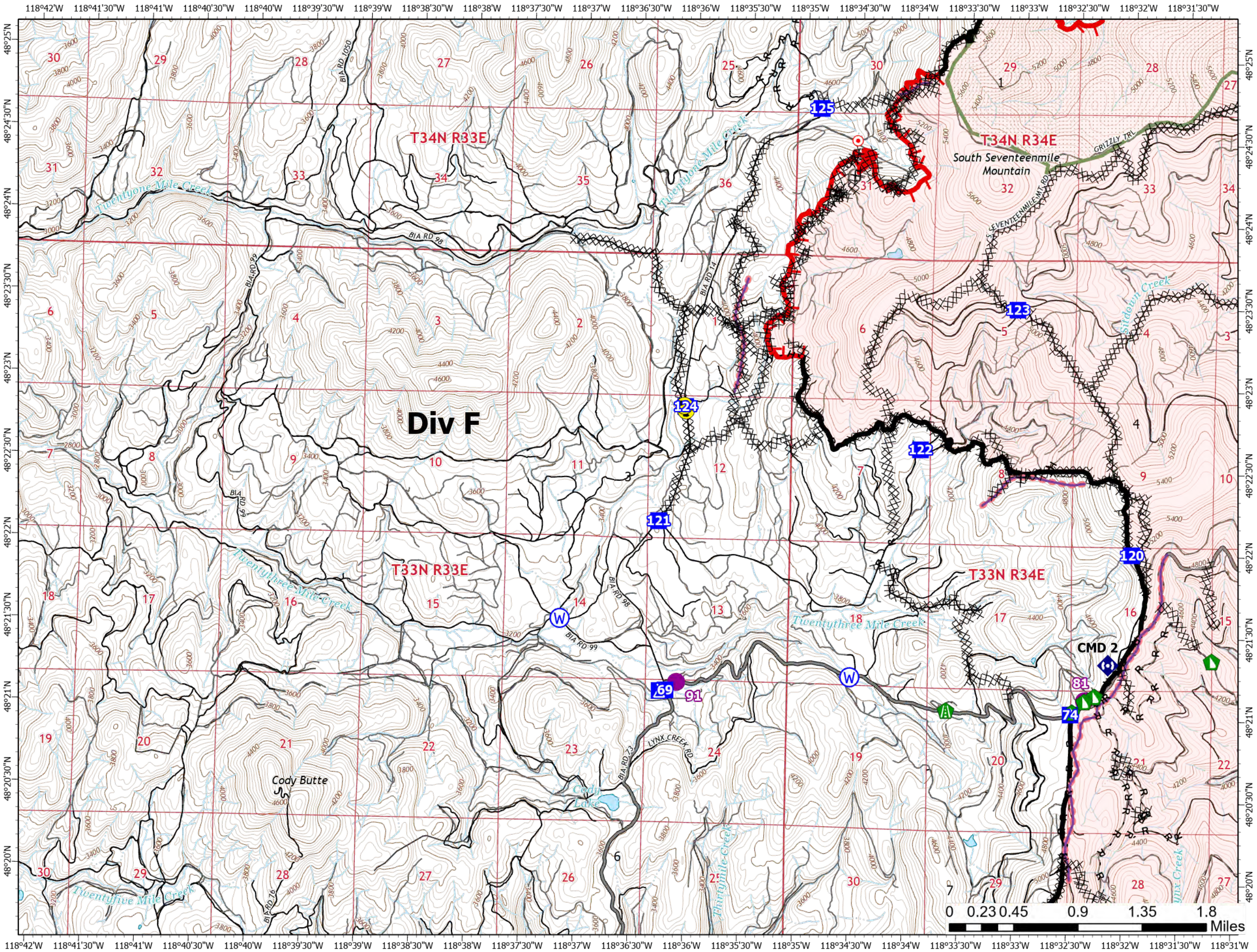
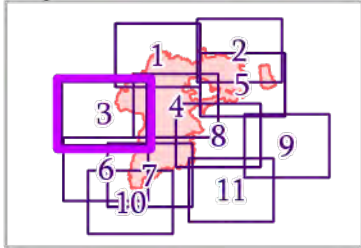


IAP MAP

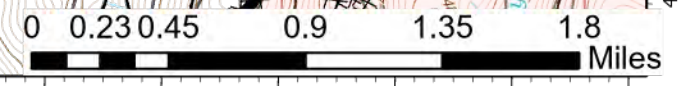
Summit Trail Fire

WA-COA-200087

46,618 Acres
on 09/02/2021 at 21:07
September 04, 2021



- Page 03 of 11
- Helispot
 - Drop Point
 - Camp
 - Hot Spot - Spot Fire
 - Road Repair
 - Dozer Push
 - Repeater
 - Hazard
 - Water Source
 - Completed Dozer Line
 - Completed Hand Line
 - Completed Road as Line
 - Planned Road as Line
 - Retardant Drop
 - Fire Edge
 - Contained Line
 - Fire Perimeter
 - Main Route - Unimproved
 - Local Road
 - 4WD
 - Wilderness Area
 - Driveable
 - Not Driveable



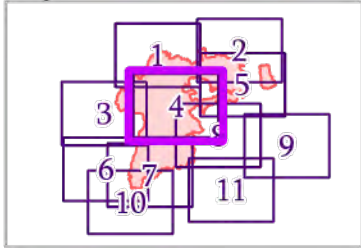
IAP MAP

Summit Trail Fire

WA-COA-200087

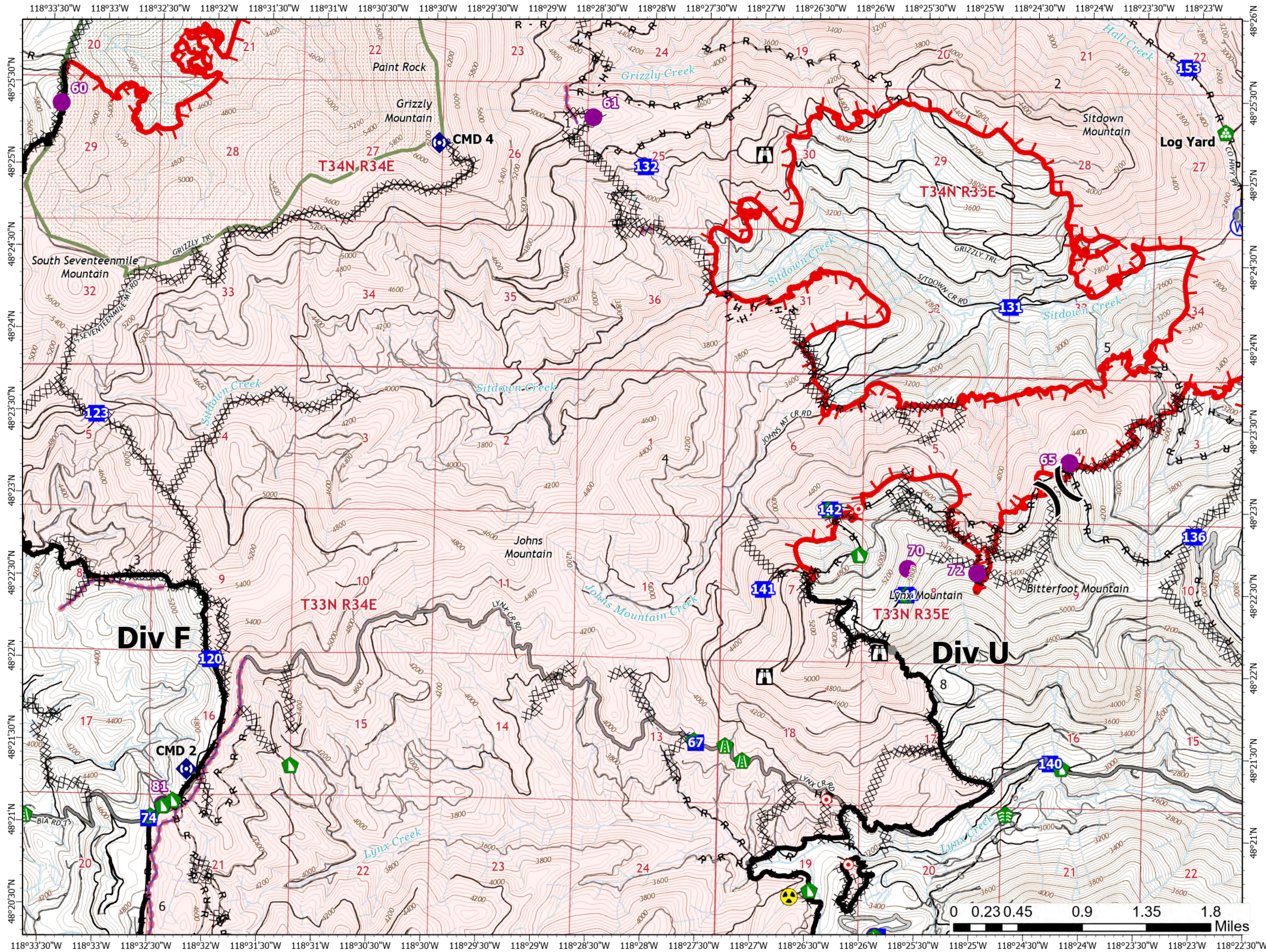
46,618 Acres
on 09/02/2021 at 21:07

September 04, 2021



- Page 04 of 11
- Helispot
 - Division Break
 - Drop Point
 - Lookout
 - Hot Spot - Spot Fire
 - Other
 - Bridge
 - Structure Wrap
 - Stream Crossing
 - Road Repair
 - Landing or Log Deck
 - Dozer Push
 - Repeater
 - Hazard
 - Water Source

- Completed Dozer Line
- Completed Hand Line
- Completed Mixed Construction Line
- Completed Road as Line
- Planned Hand Line
- Planned Secondary Line
- Access or Improved Road
- Other
- Retardant Drop
- Fire Edge
- Contained Line

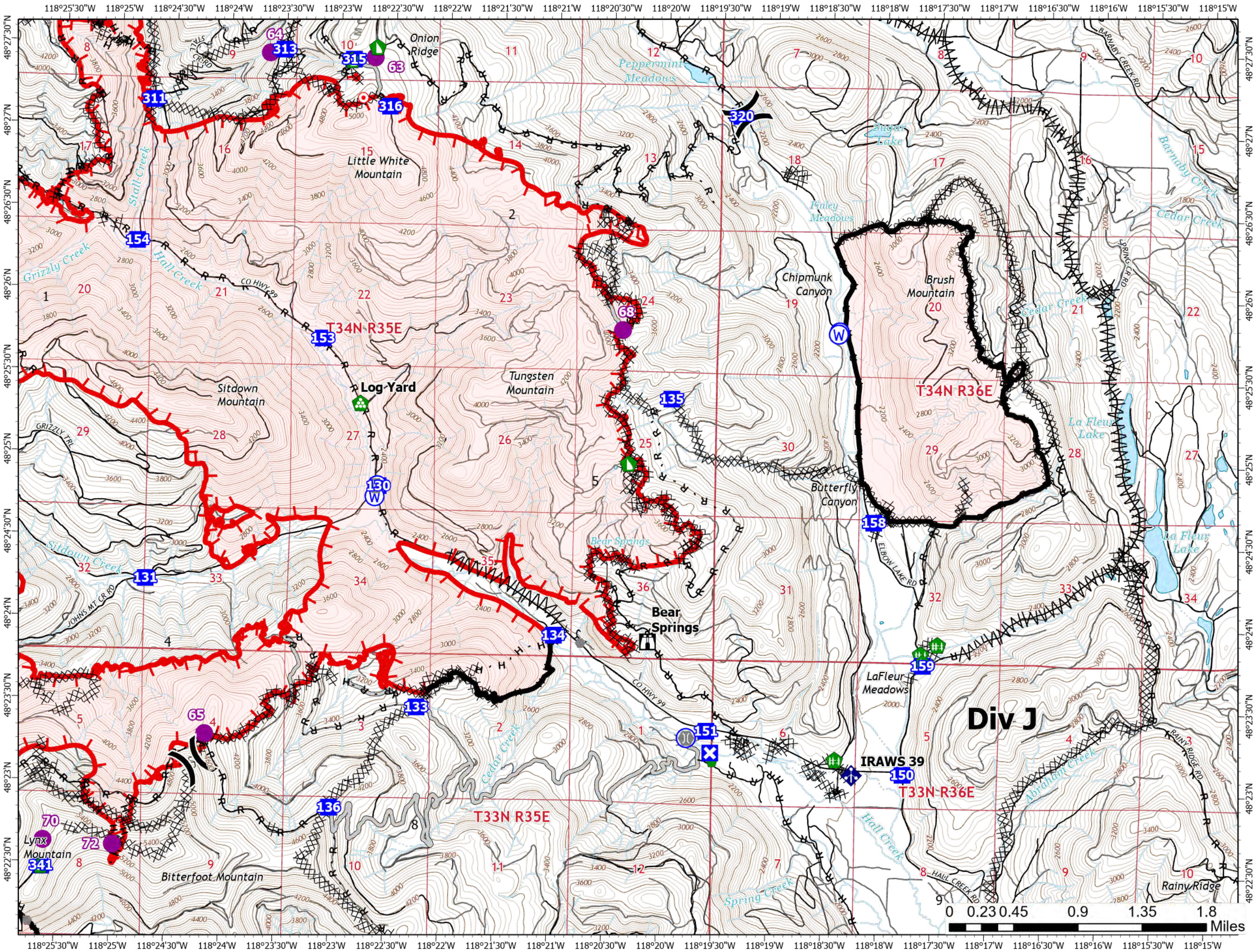
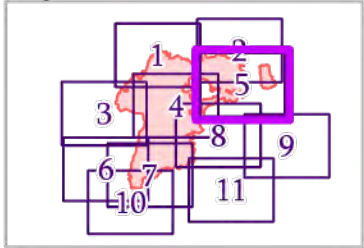


IAP MAP

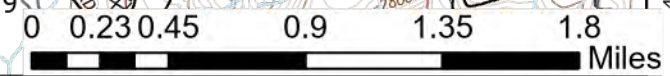
Summit Trail Fire

WA-COA-200087

46,618 Acres
 on 09/02/2021 at 21:07
 September 04, 2021



- Page 05 of 11
- Helispot
 - Division Break
 - Drop Point
 - Closure
 - Lookout
 - Hot Spot - Spot Fire
 - Other
 - Bridge
 - Structure Wrap
 - Repair Point
 - Landing or Log Deck
 - Fence - Cut/Damaged
 - Dozer Push
 - Mobile Weather Unit
 - Water Source
 - Completed Dozer Line
 - Completed Fuel Break
 - Completed Hand Line
 - Completed Road as Line
 - Planned Hand Line
 - Planned Mixed Construction Line
 - Planned Road as Line
 - Planned Secondary Line
 - Access or Improved Road
 - Other
 - Fire Edge
 - Contained Line



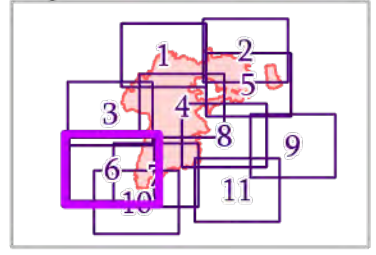
118°41'30"W 118°41'W 118°40'30"W 118°40'W 118°39'30"W 118°39'W 118°38'30"W 118°38'W 118°37'30"W 118°37'W 118°36'30"W 118°36'W 118°35'30"W 118°35'W 118°34'30"W 118°34'W 118°33'30"W 118°33'W 118°32'30"W 118°32'W 118°31'30"W 118°31'W

IAP MAP

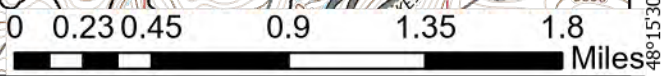
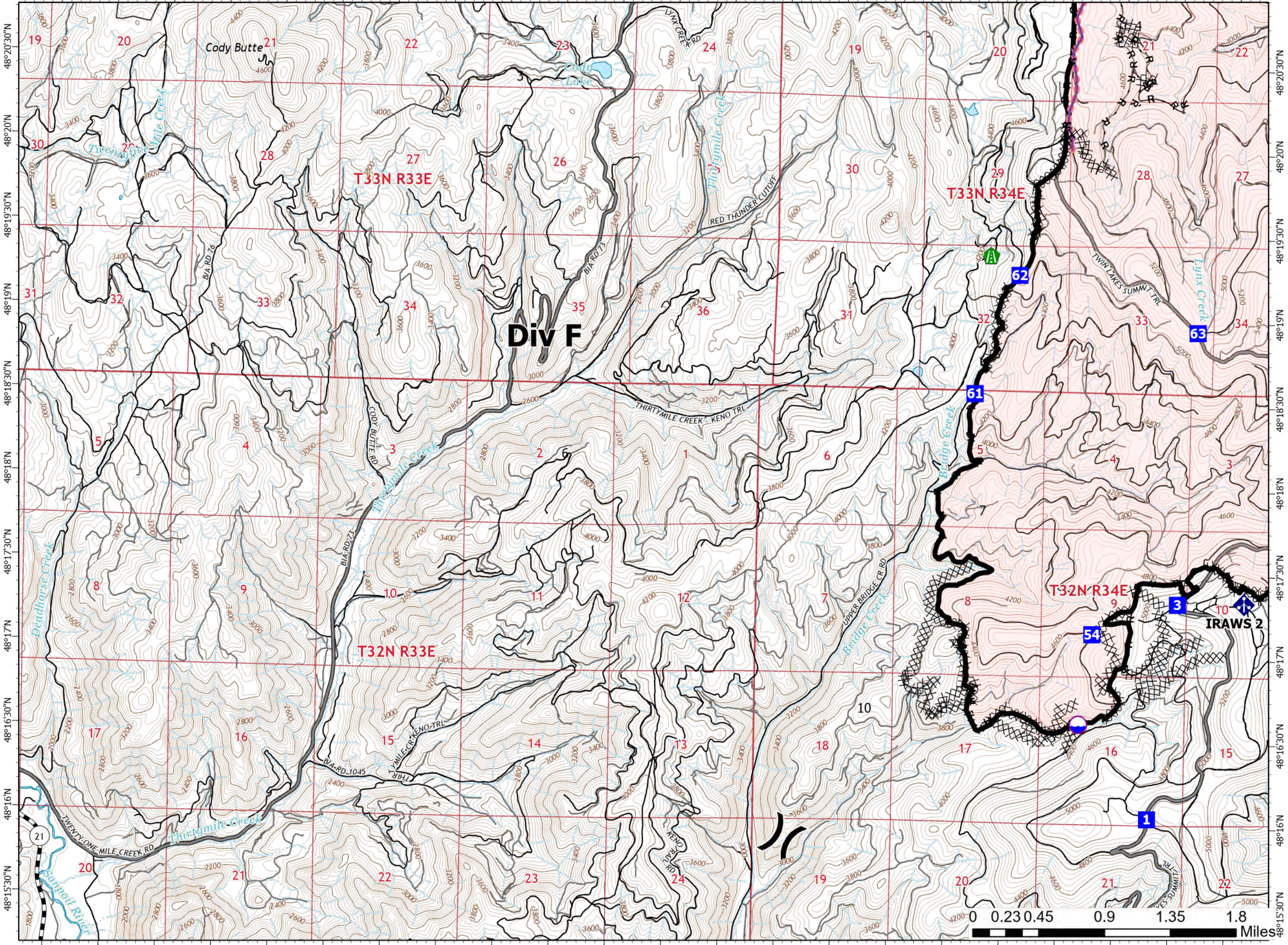
Summit Trail Fire

WA-COA-200087

46,618 Acres
on 09/02/2021 at 21:07
September 04, 2021



- Dip Site
- Division Break
- Drop Point
- Road Repair
- Dozer Push
- Mobile Weather Unit
- Completed Dozer Line
- Completed Hand Line
- Completed Road as Line
- Retardant Drop
- Contained Line
- Fire Perimeter
- Main Route - Improved
- Main Route - Unimproved
- Local Connector
- Local Road
- 4WD
- Driveable
- Not Driveable



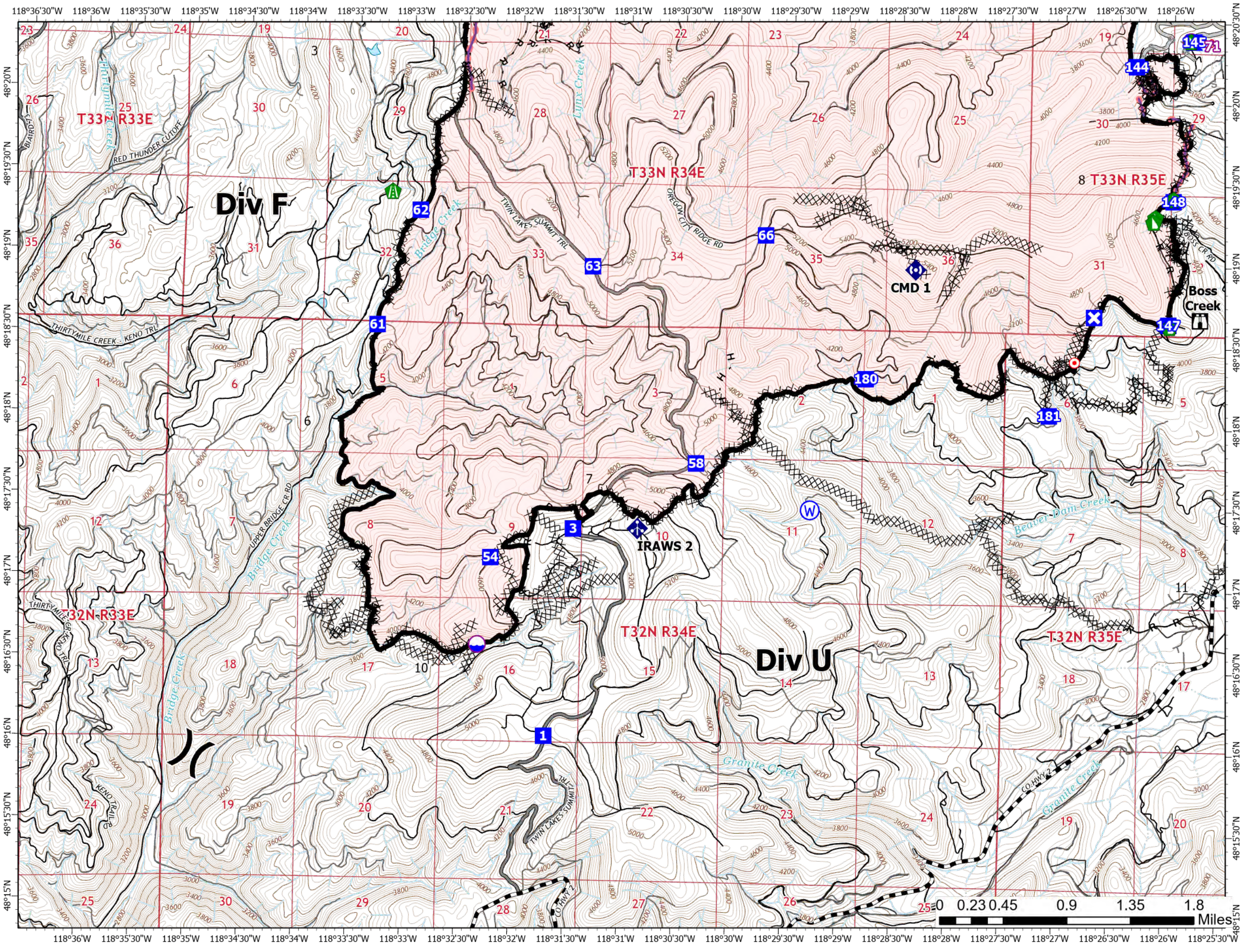
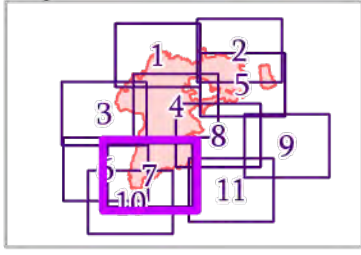
118°41'30"W 118°41'W 118°40'30"W 118°40'W 118°39'30"W 118°39'W 118°38'30"W 118°38'W 118°37'30"W 118°37'W 118°36'30"W 118°36'W 118°35'30"W 118°35'W 118°34'30"W 118°34'W 118°33'30"W 118°33'W 118°32'30"W 118°32'W 118°31'30"W 118°31'W

IAP MAP

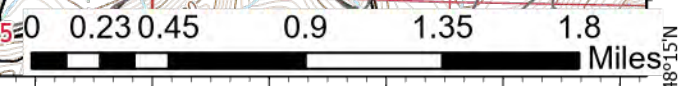
Summit Trail Fire

WA-COA-200087

46,618 Acres
on 09/02/2021 at 21:07
September 04, 2021



- Page 07 of 11
- Dip Site
 - Helispot
 - Division Break
 - Drop Point
 - Closure
 - Lookout
 - Hot Spot - Spot Fire
 - Road Repair
 - Dozer Push
 - Mobile Weather Unit
 - Repeater
 - Hazard
 - Water Source
 - Completed Dozer Line
 - Completed Hand Line
 - Completed Road as Line
 - Planned Secondary Line
 - Access or Improved Road
 - Retardant Drop
 - Contained Line
 - Fire Perimeter
 - Main Route - Improved
 - Main Route - Unimproved
 - Local Road
 - 4WD
 - Driveable

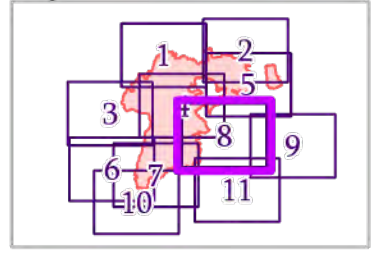


IAP MAP

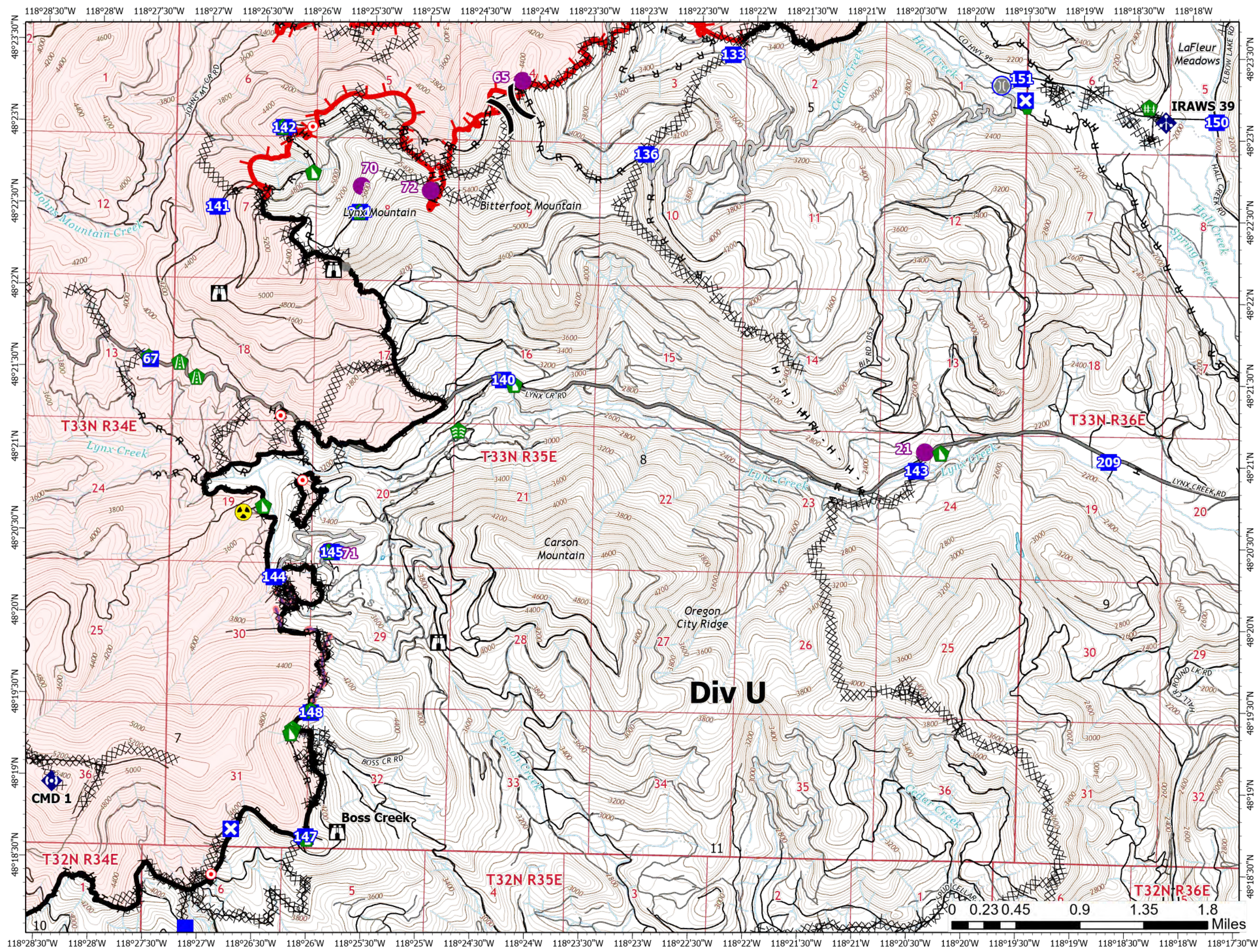
Summit Trail Fire

WA-COA-200087

46,618 Acres
 on 09/02/2021 at 21:07
 September 04, 2021



- Page 08 of 11
- Helispot
 - Division Break
 - Drop Point
 - Closure
 - Lookout
 - Hot Spot - Spot Fire
 - Other
 - Bridge
 - Structure Wrap
 - Stream Crossing
 - Road Repair
 - Repair Point
 - Fence - Cut/Damaged
 - Dozer Push
 - Mobile Weather Unit
 - Repeater
 - Hazard
 - Water Source
 - Completed Dozer Line
 - Completed Hand Line
 - Completed Mixed Construction Line
 - Completed Road as Line
 - Planned Hand Line
 - Planned Secondary Line
 - Access or Improved Road
 - Other



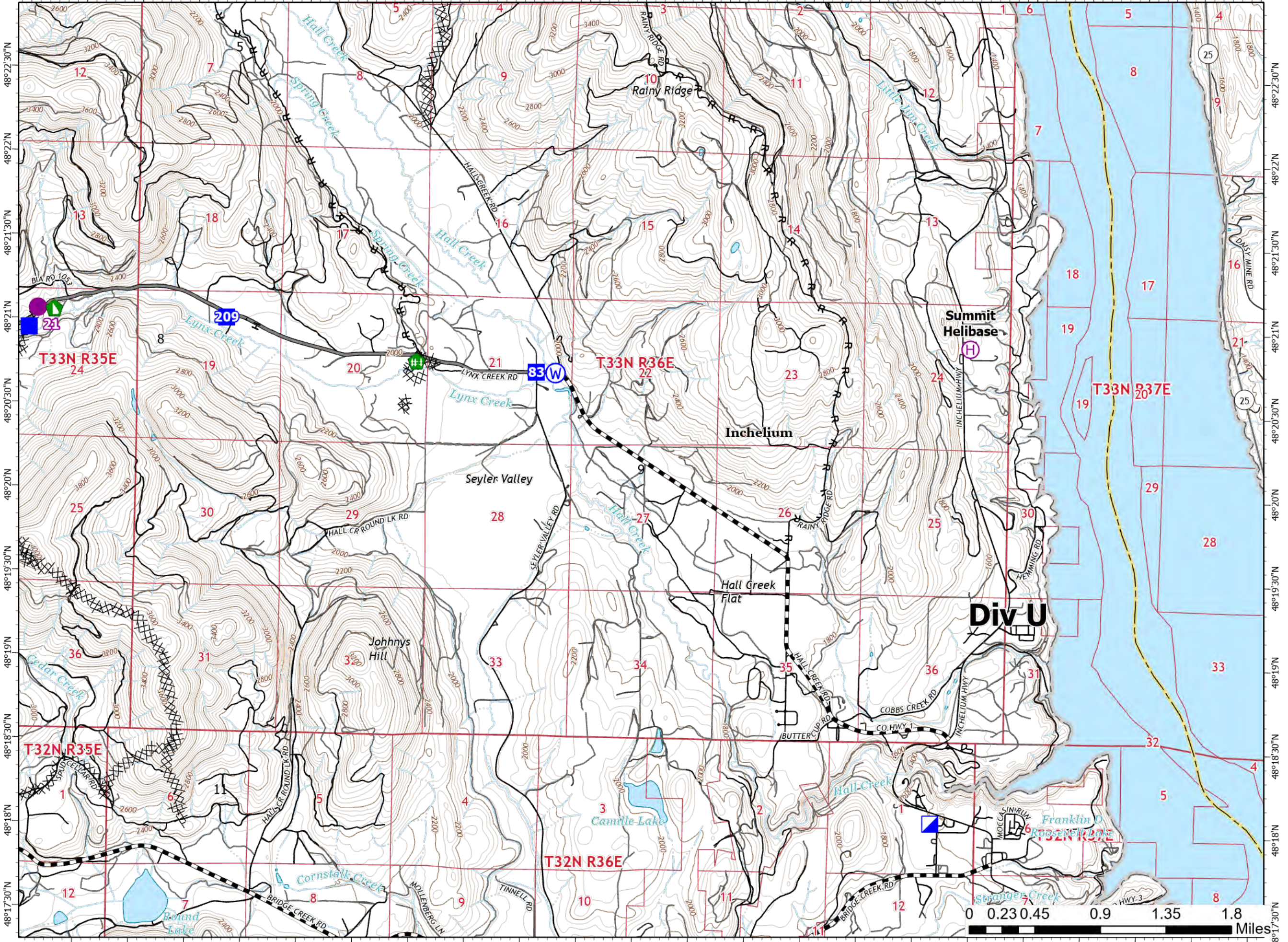
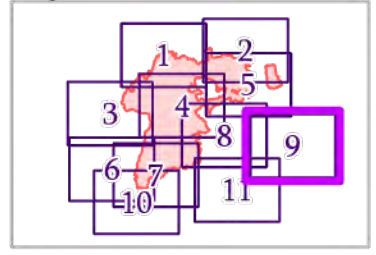
118°20'30"W 118°20"W 118°19'30"W 118°19"W 118°18'30"W 118°18"W 118°17'30"W 118°17"W 118°16'30"W 118°16"W 118°15'30"W 118°15"W 118°14'30"W 118°14"W 118°13'30"W 118°13"W 118°12'30"W 118°12"W 118°11'30"W 118°11"W 118°10'30"W 118°10"W 118°9'30"W

IAP MAP

Summit Trail Fire

WA-COA-200087

46,618 Acres
on 09/02/2021 at 21:07
September 04, 2021



- Helispot
- Helibase
- Incident Command Post
- Drop Point
- Fence - Cut/Damaged
- Dozer Push
- Water Source
- Completed Dozer Line
- Completed Hand Line
- Completed Road as Line
- Access or Improved Road
- Other
- Main Route - Improved
- Main Route - Unimproved
- Local Connector
- Local Road
- 4WD
- Driveable
- Not Driveable



0 0.23 0.45 0.9 1.35 1.8 Miles

118°20'30"W 118°20"W 118°19'30"W 118°19"W 118°18'30"W 118°18"W 118°17'30"W 118°17"W 118°16'30"W 118°16"W 118°15'30"W 118°15"W 118°14'30"W 118°14"W 118°13'30"W 118°13"W 118°12'30"W 118°12"W 118°11'30"W 118°11"W 118°10'30"W 118°10"W 118°9'30"W

118°38'30"W 118°38'W 118°37'30"W 118°37'W 118°36'30"W 118°36'W 118°35'30"W 118°35'W 118°34'30"W 118°34'W 118°33'30"W 118°33'W 118°32'30"W 118°32'W 118°31'30"W 118°31'W 118°30'30"W 118°30'W 118°29'30"W 118°29'W 118°28'30"W 118°28'W

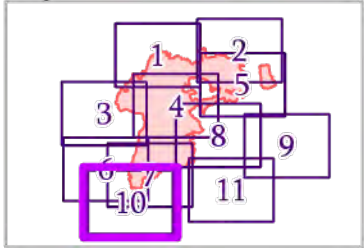
IAP MAP

Summit Trail Fire

WA-COA-200087

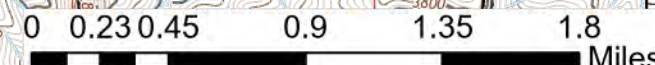
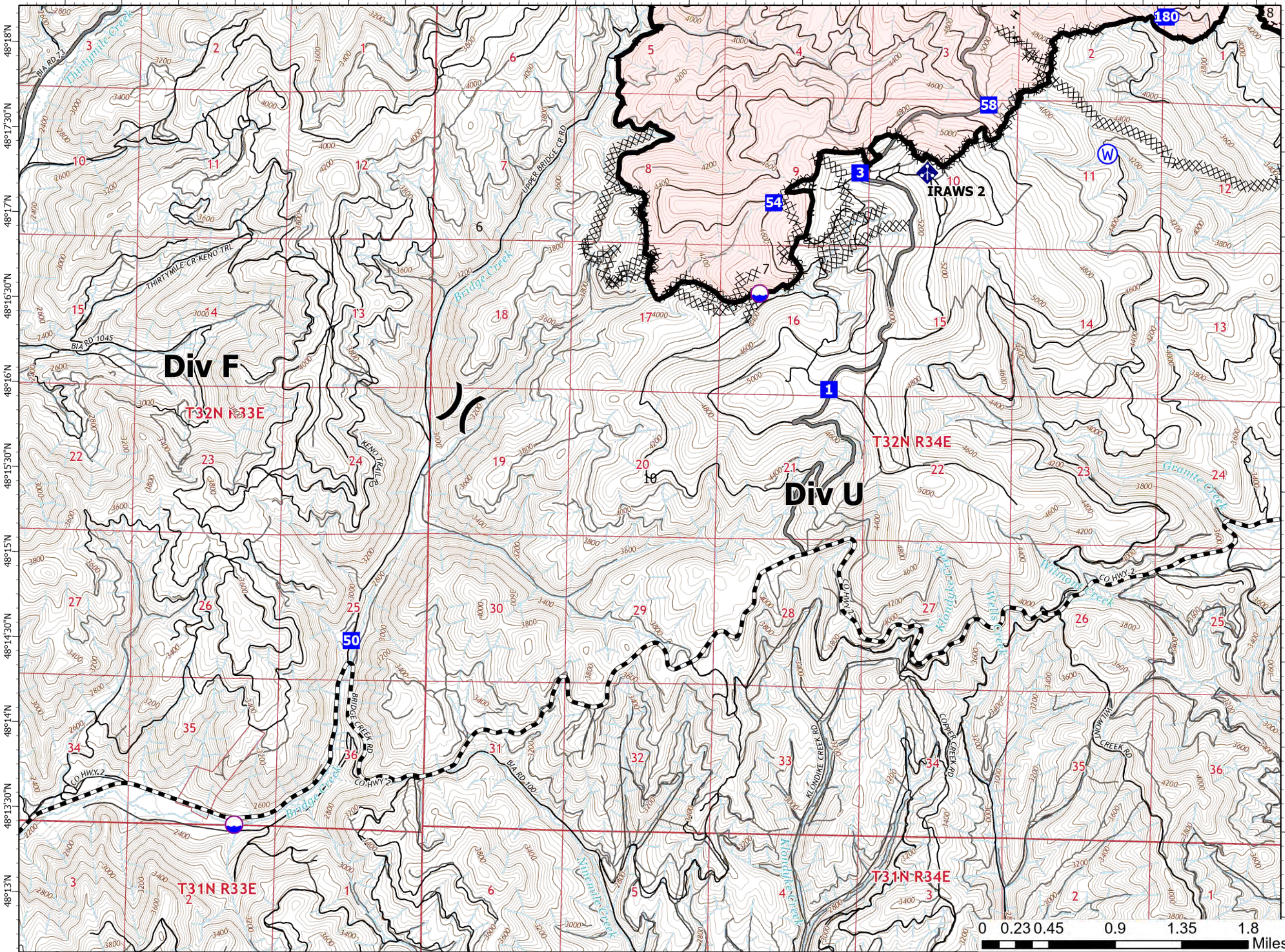
46,618 Acres
on 09/02/2021 at 21:07

September 04, 2021



Dip Site Page 10 of 11

- Dip Site
- Division Break
- Drop Point
- Mobile Weather Unit
- Water Source
- Completed Dozer Line
- Completed Hand Line
- Completed Road as Line
- Contained Line
- Fire Perimeter
- Main Route - Improved
- Main Route - Unimproved
- Local Road
- 4WD
- Driveable
- Not Driveable



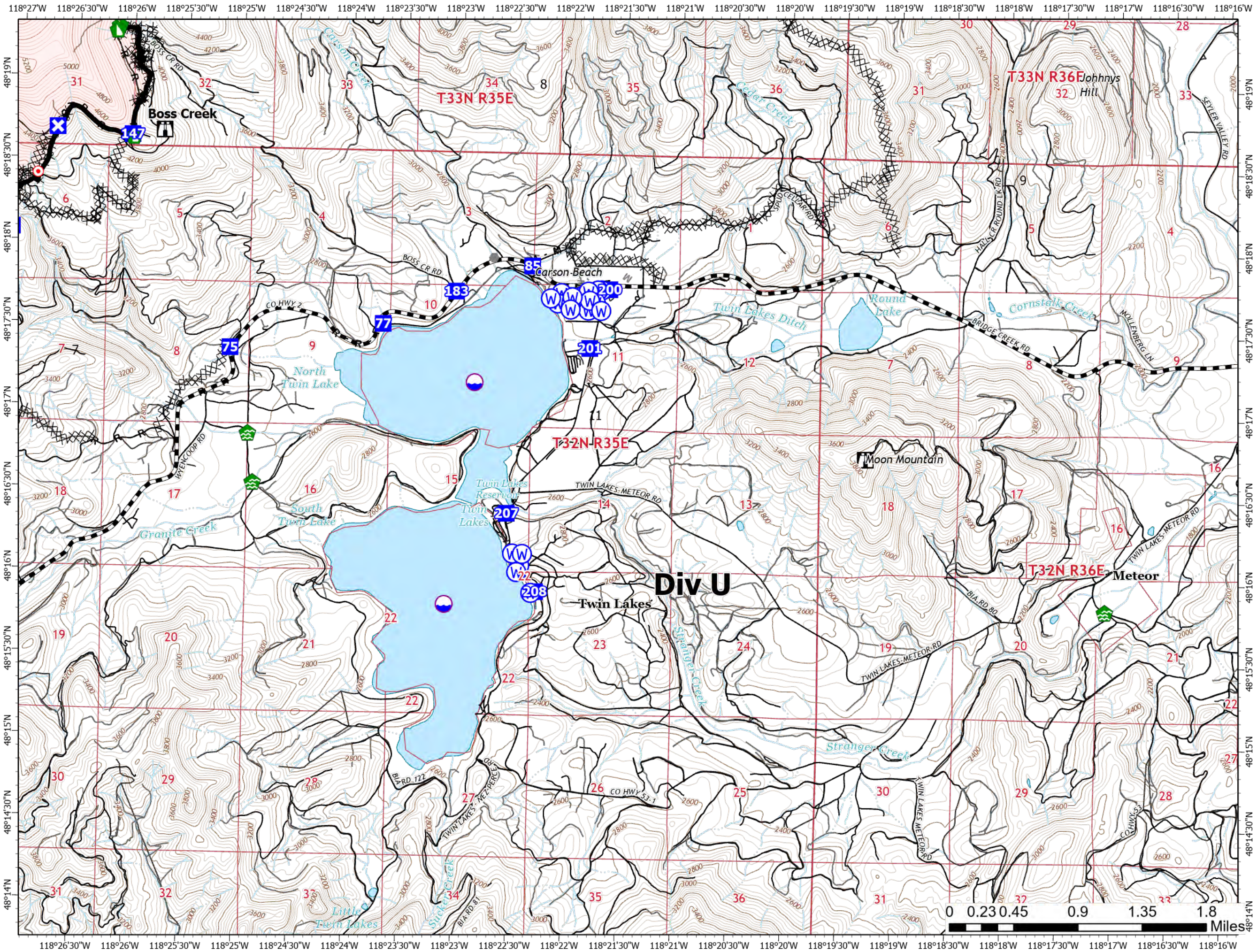
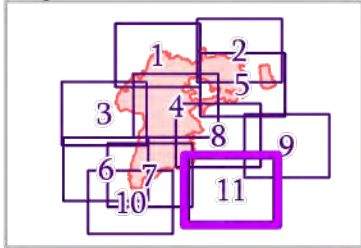
118°38'30"W 118°38'W 118°37'30"W 118°37'W 118°36'30"W 118°36'W 118°35'30"W 118°35'W 118°34'30"W 118°34'W 118°33'30"W 118°33'W 118°32'30"W 118°32'W 118°31'30"W 118°31'W 118°30'30"W 118°30'W 118°29'30"W 118°29'W 118°28'30"W 118°28'W

IAP MAP

Summit Trail Fire

WA-COA-200087

46,618 Acres
 on 09/02/2021 at 21:07
 September 04, 2021



- Page 11 of 11
- Dip Site
 - Drop Point
 - Closure
 - Lookout
 - Hot Spot - Spot Fire
 - Other
 - Water Development or Draft Site
 - Dozer Push
 - Water Source
 - Completed Dozer Line
 - Completed Hand Line
 - Completed Mixed Construction Line
 - Completed Road as Line
 - Planned Mixed Construction Line
 - Other
 - Contained Line
 - Fire Perimeter
 - Main Route - Improved
 - Local Road
 - 4WD
 - Driveable
 - Not Driveable

